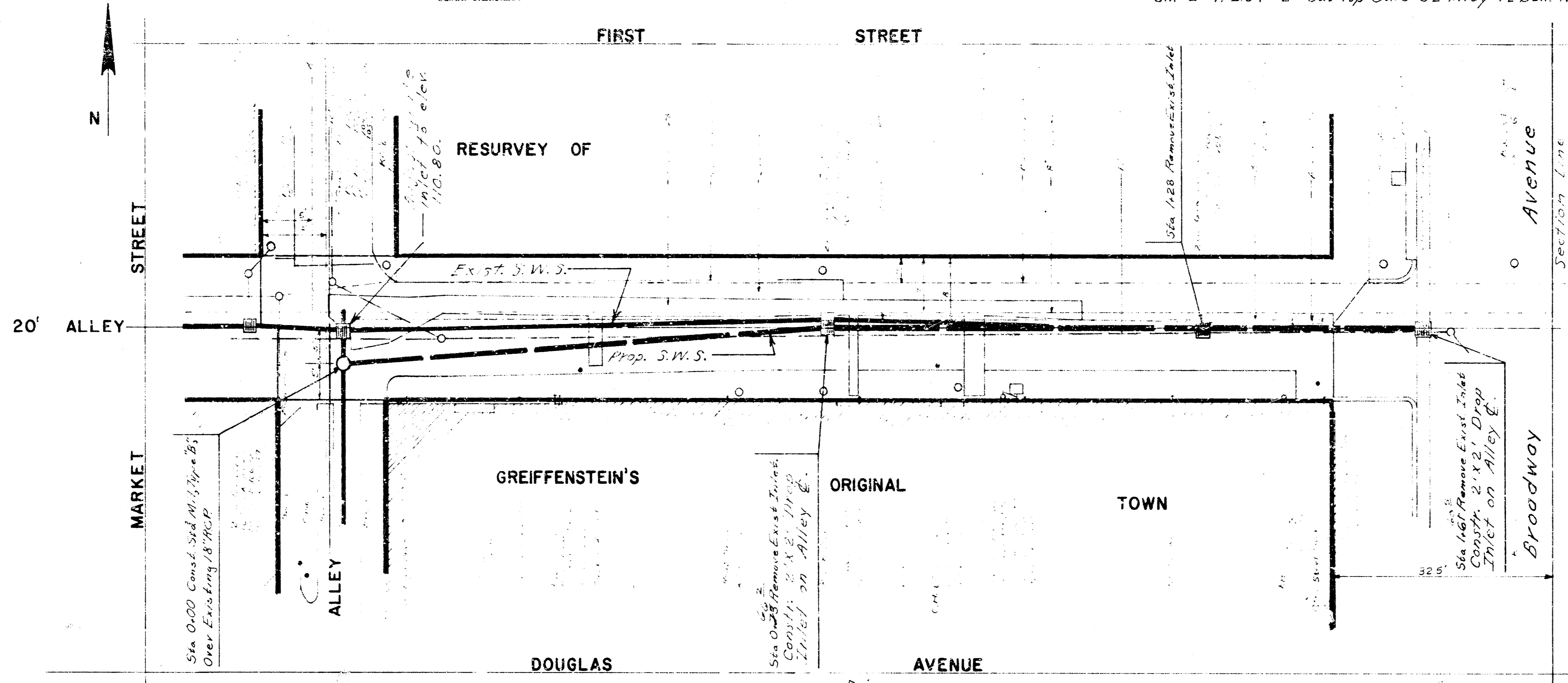


NOTE: EXCESS EXCAVATION FROM SIDER TRENCHES IS TO REMAIN ON PROJECT SITE. EXCESS EXCAVATION SHALL BE UNIFORMLY WINDROWED OVER SIDER TRENCHES.

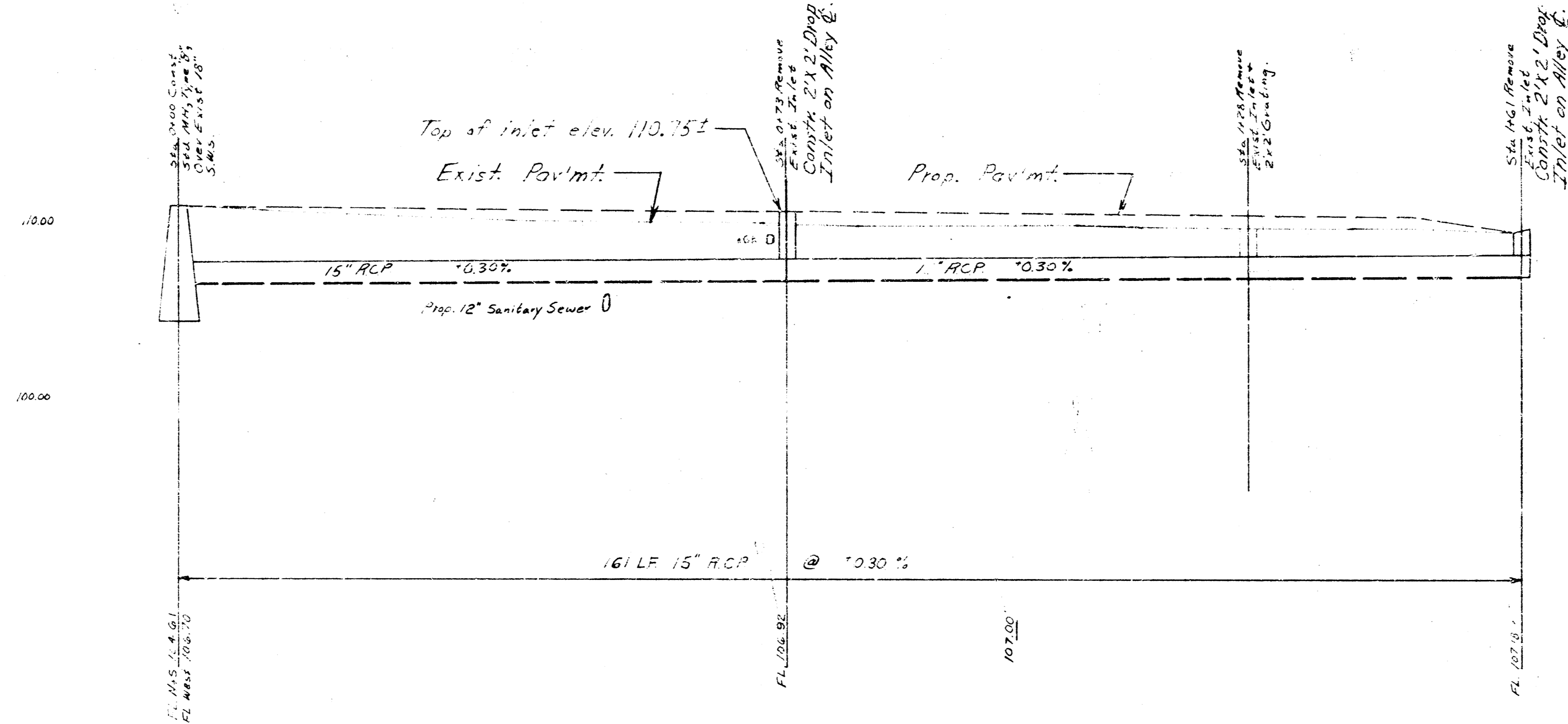
BM #1 112.93 "d" Cut Top Conc. Retaining Wall On SW Cor Broadway & First.
 BM #2 112.04 "d" Cut Top Curb SL Alley 1/2 Blk. N Of Douglas, 135' F. OS EL Market



- Underground Utilities
- Asbla Gas
 - Gas Service
 - Bell Telephone
 - H.G. & E
 - Storm Water Sewer
 - Sanitary Sewer

NOTE: ALL AC LINE FROM DRAIN CONNECTIONS TO THE EXISTING STORM SEWER SHALL BE CONNECTED TO THE STORM SEWER BY THE CONTRACTOR. THIS WORK WILL BE PAID FOR AT THE UNIT PRICE BID FOR STORM DRAIN CONNECTIONS. UNIT PRICE SHALL INCLUDE THE COST OF ALL MATERIALS, LABOR, PERMITS, AND ANY OTHER NECESSARY INSTRUMENTALS TO COMPLETE THE WORK IN ACCORDANCE WITH THE CITY OF WICHITA CODE.

Plan Scale: 1"=10'
 Profile Scale: Horizontal: 1"=10'
 Vertical: 1"=5'



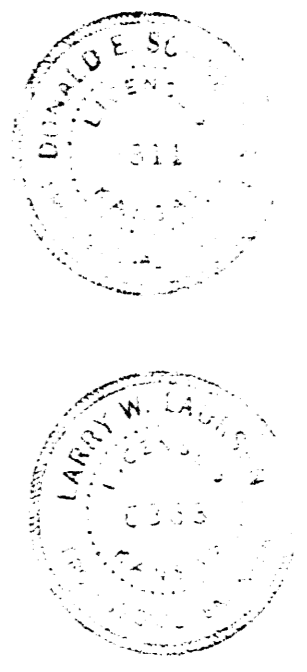
As Built Final Plans 11-19-93

REBUILDING AND RECONSTRUCTION OF PORTION OF WEST SUBMAIN B, S.S. NO.1, AND PORTION OF DISTRICT K, STORM WATER SEWER NO.8, IN THE ALLEY NORTH OF DOUGLAS FROM WEST LINE OF ALLEY WEST OF BROADWAY W.L. BROADWAY. CITY OF WICHITA, KANSAS

R.W. LINN CITY ENGINEER

DATE: Sept. 1973 SHEET: 1 OF 2

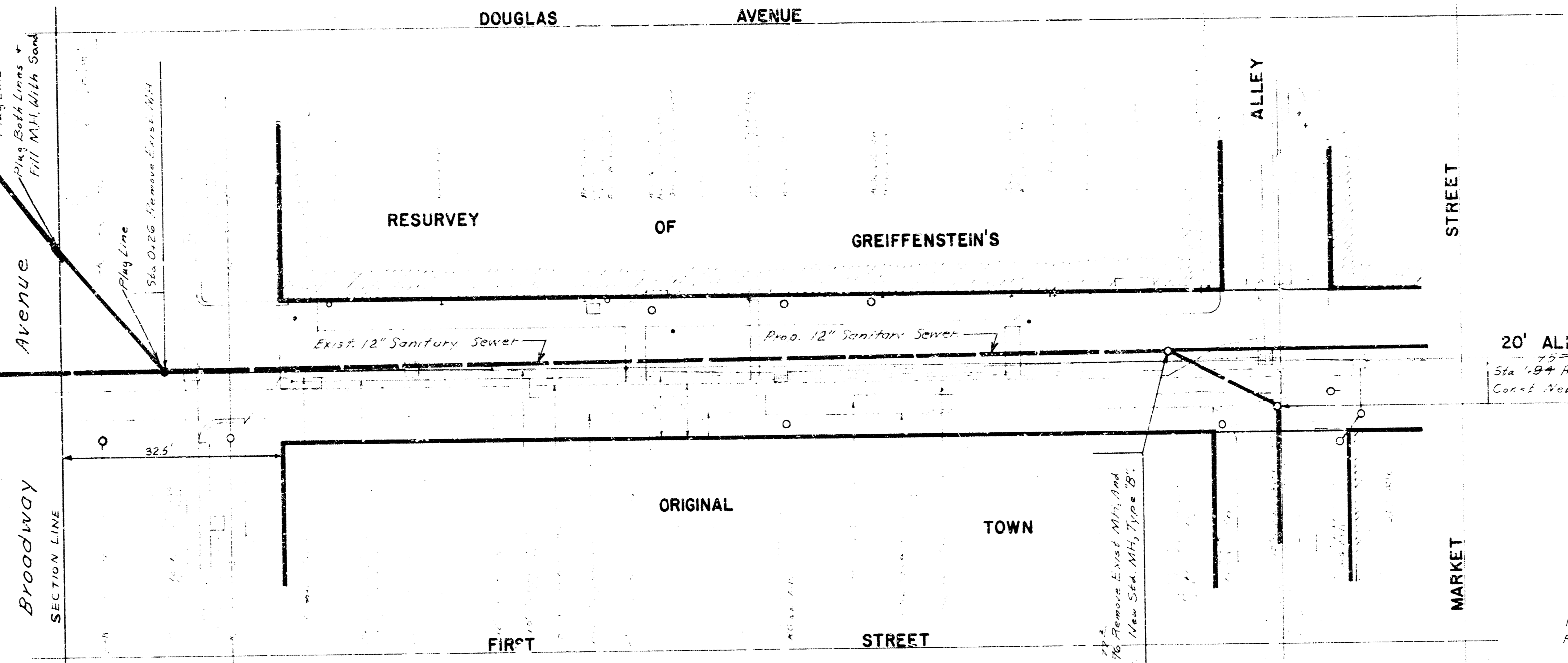
PROJECT NO. DBKL 572019



Sta. 6+00 Const. 3' x 5' x 6'
V.M. Type "B" on exist. 20"
Sanitary Sewer.

- Underground Utilities
- Arks Gas
 - Gas Service
 - Bell Telephone
 - Storm Water Sewer
 - Sanitary Sewer
 - M.G. & E.

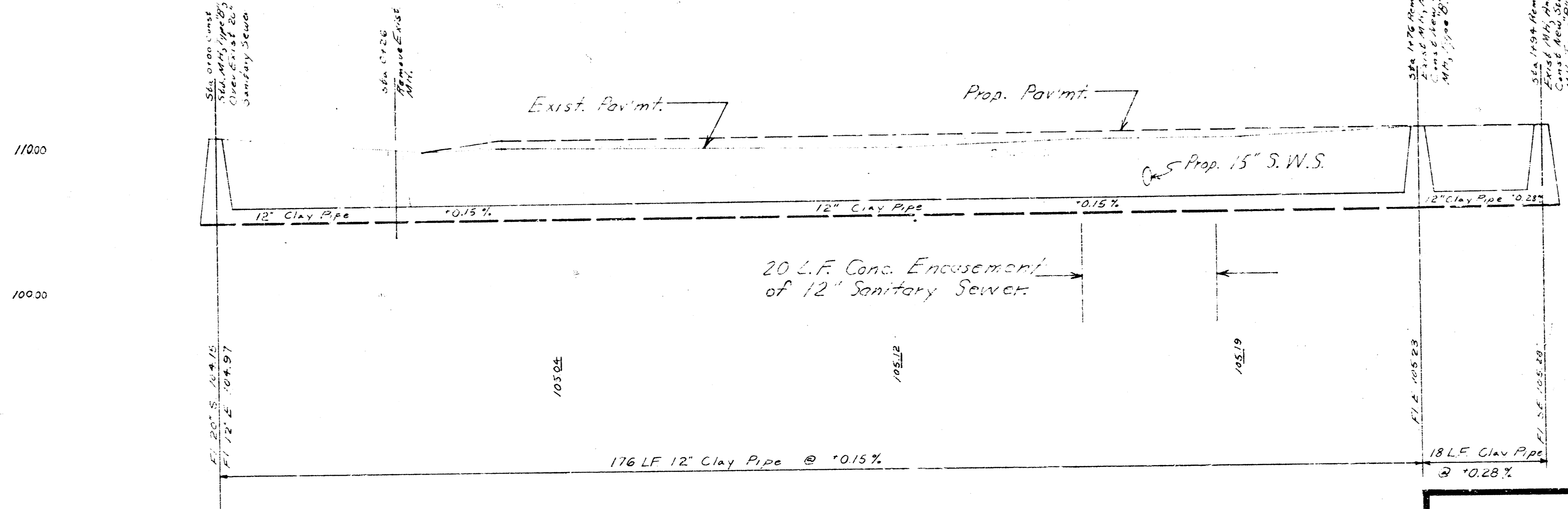
N



NOTE: ALL ACTIVE EXISTING SANITARY SEWER SERVICE CONNECTIONS ARE TO BE RELOCATED TO NEW SANITARY SEWER BY CONTRACTOR. THIS WORK WILL BE PAID FOR AT THE UNIT PRICE BID FOR SANITARY SEWER CONNECTIONS, WHICH PRICE SHALL INCLUDE THE COST OF ALL MATERIALS, LABOR, TRAVEL, AND ANY OTHER NECESSARY INCIDENTALS TO COMPLETE THE WORK IN ACCORDANCE WITH THE CITY OF WICHITA CODE.

20' ALLEY
Sta. 19+ Remove Exist. MH, And
Const. New 5d. MH, Type B

Plan Scale = 1" = 20'
Profile Scale = 1" = 10'



DATE: _____ SHEET: 2 OF 2
PROJECT NO. DBKL 572019