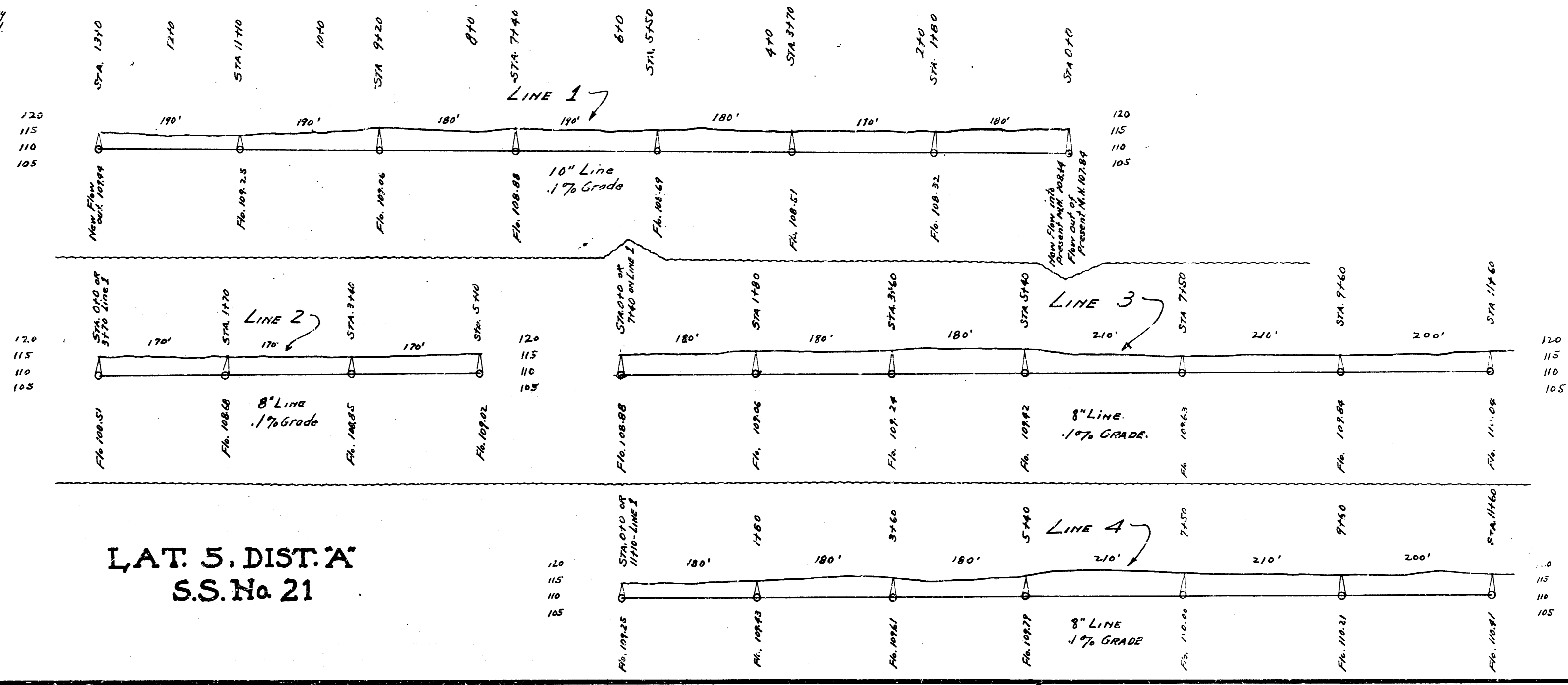
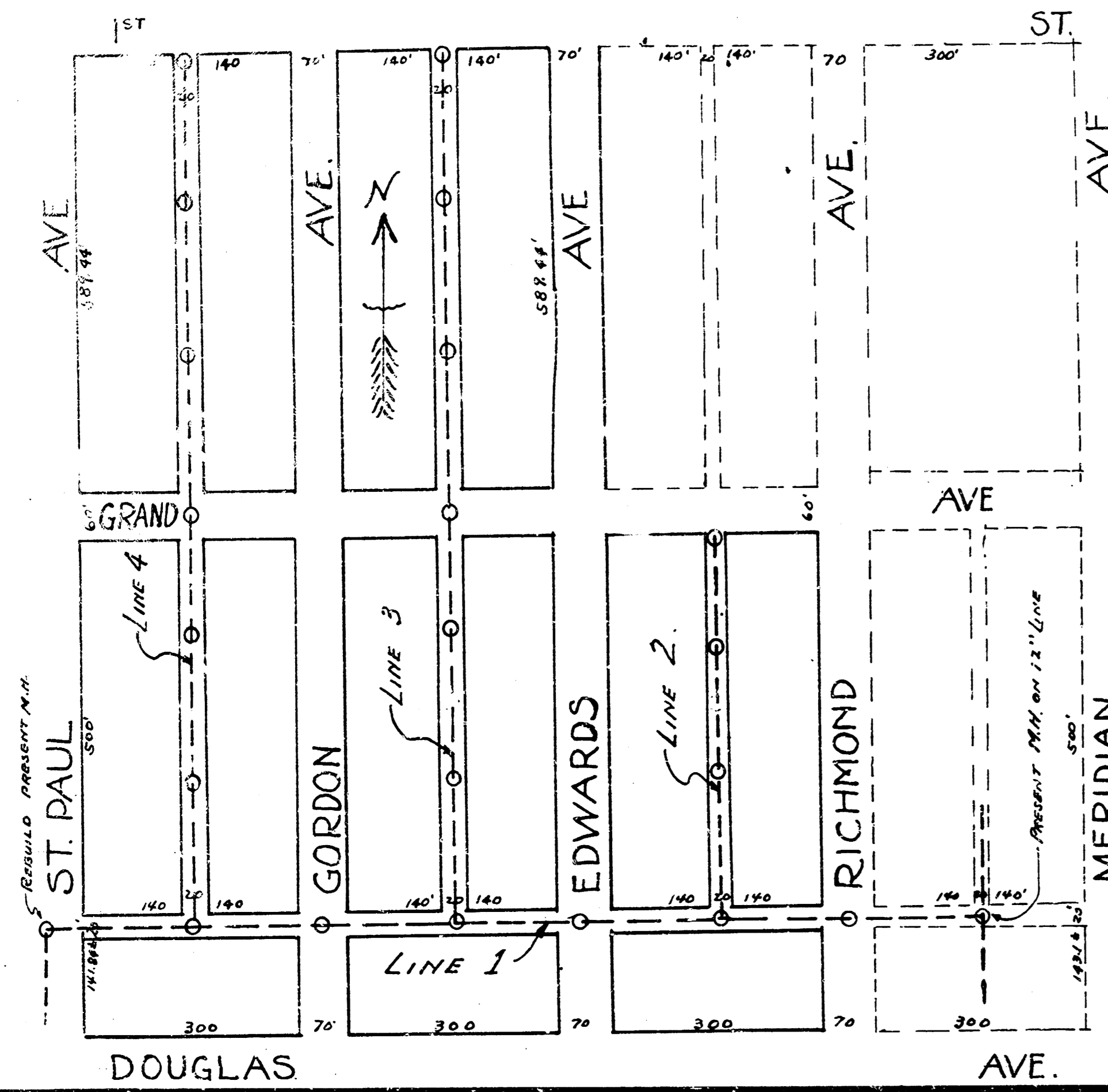
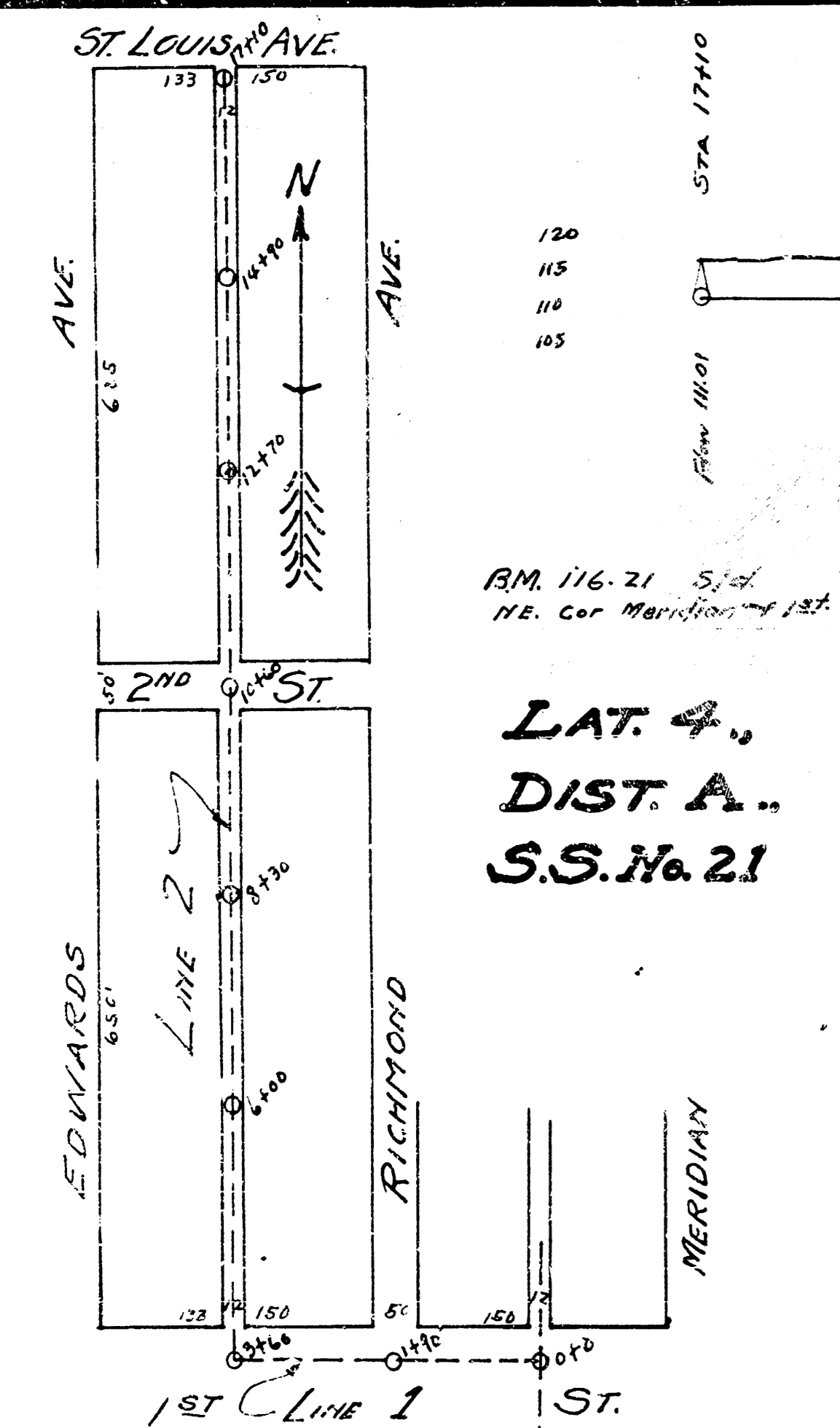


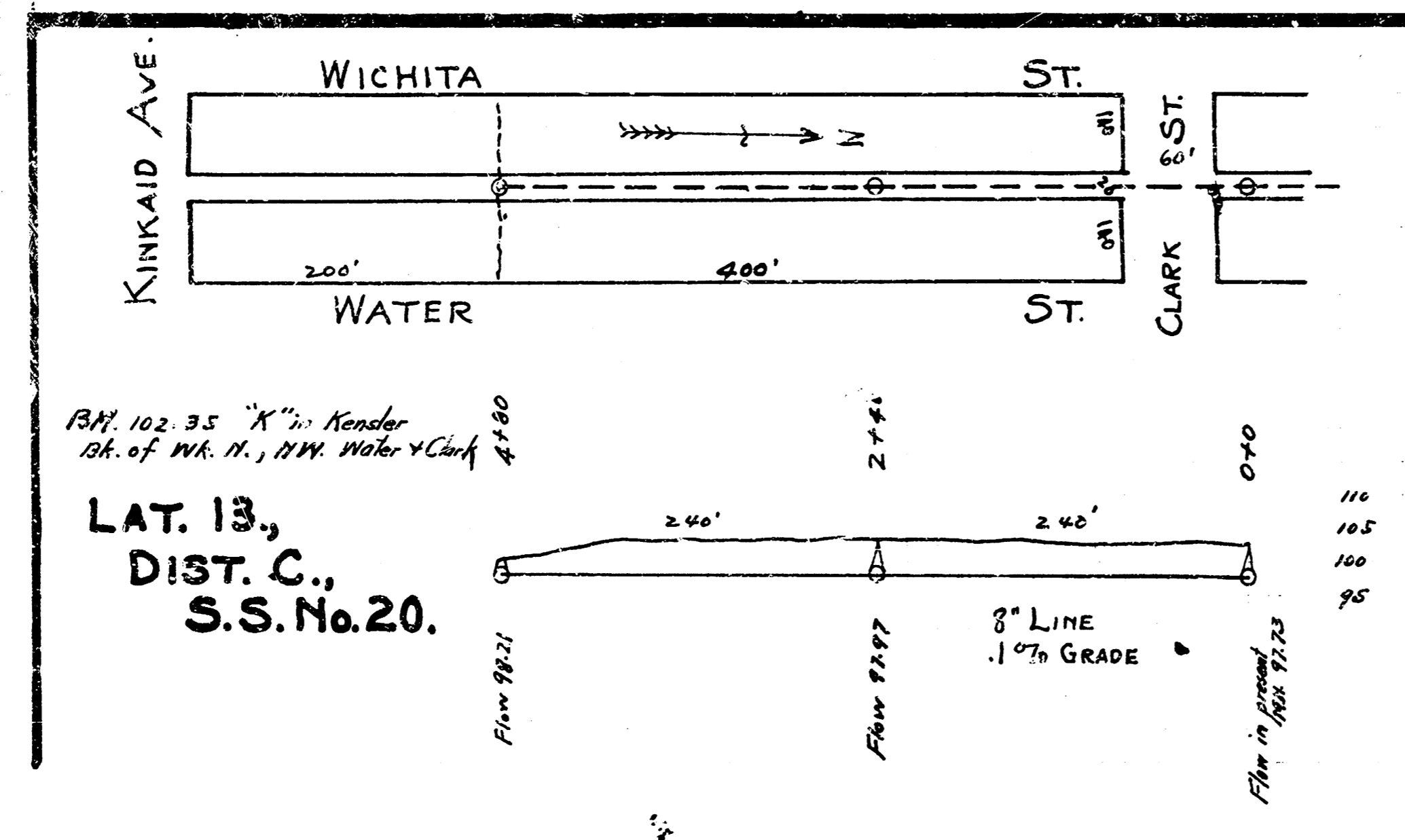
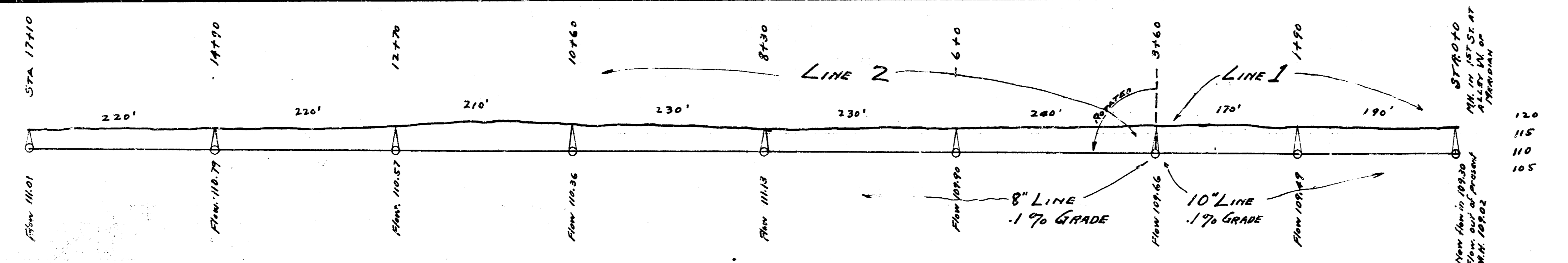
BM. 114.86 "K" in Kensler in ch. wt. N.S. of Alley N. of Douglas - W.S. of Richmond.



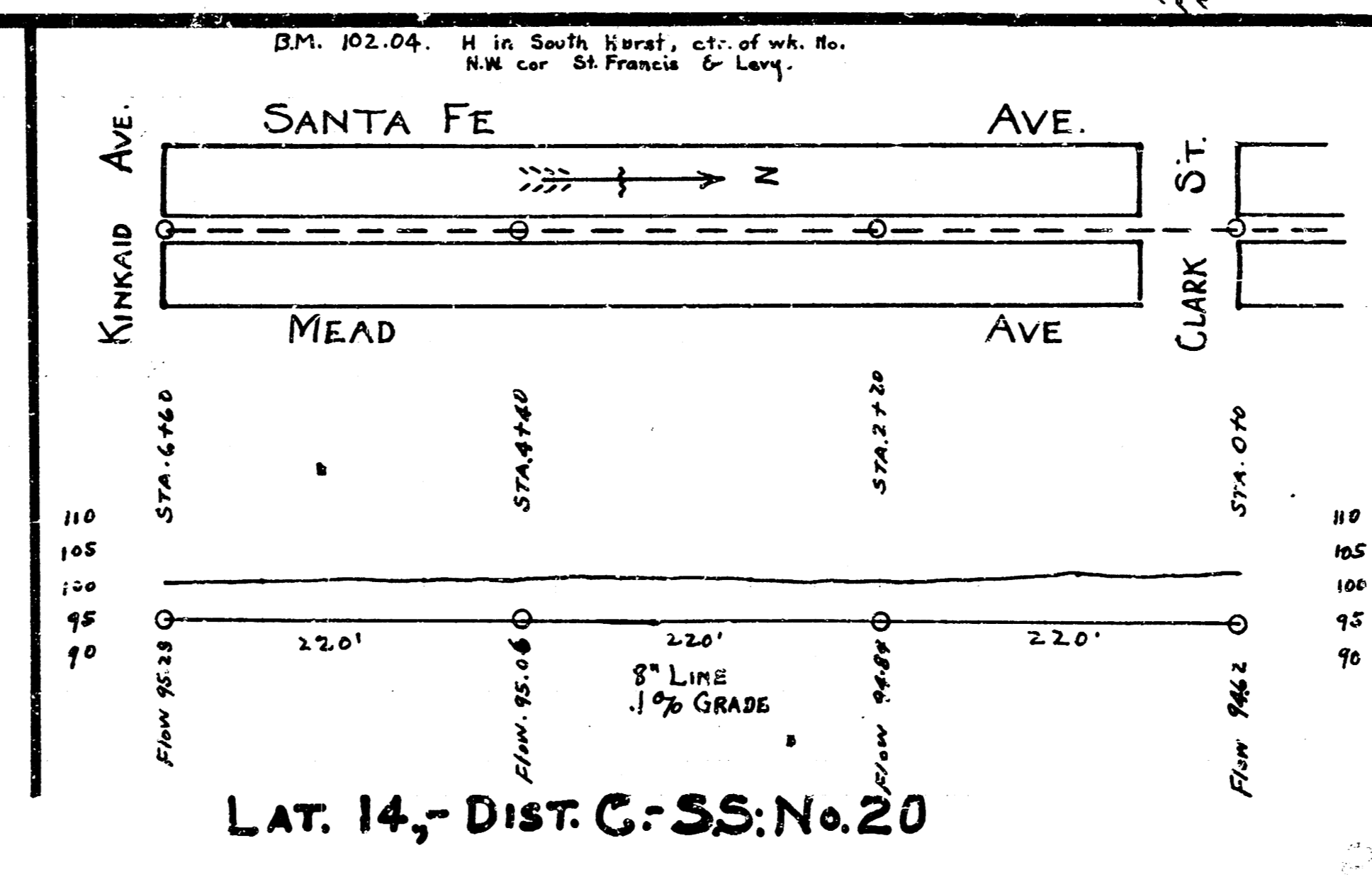
LAT. 5, DIST. A
S.S. No. 21



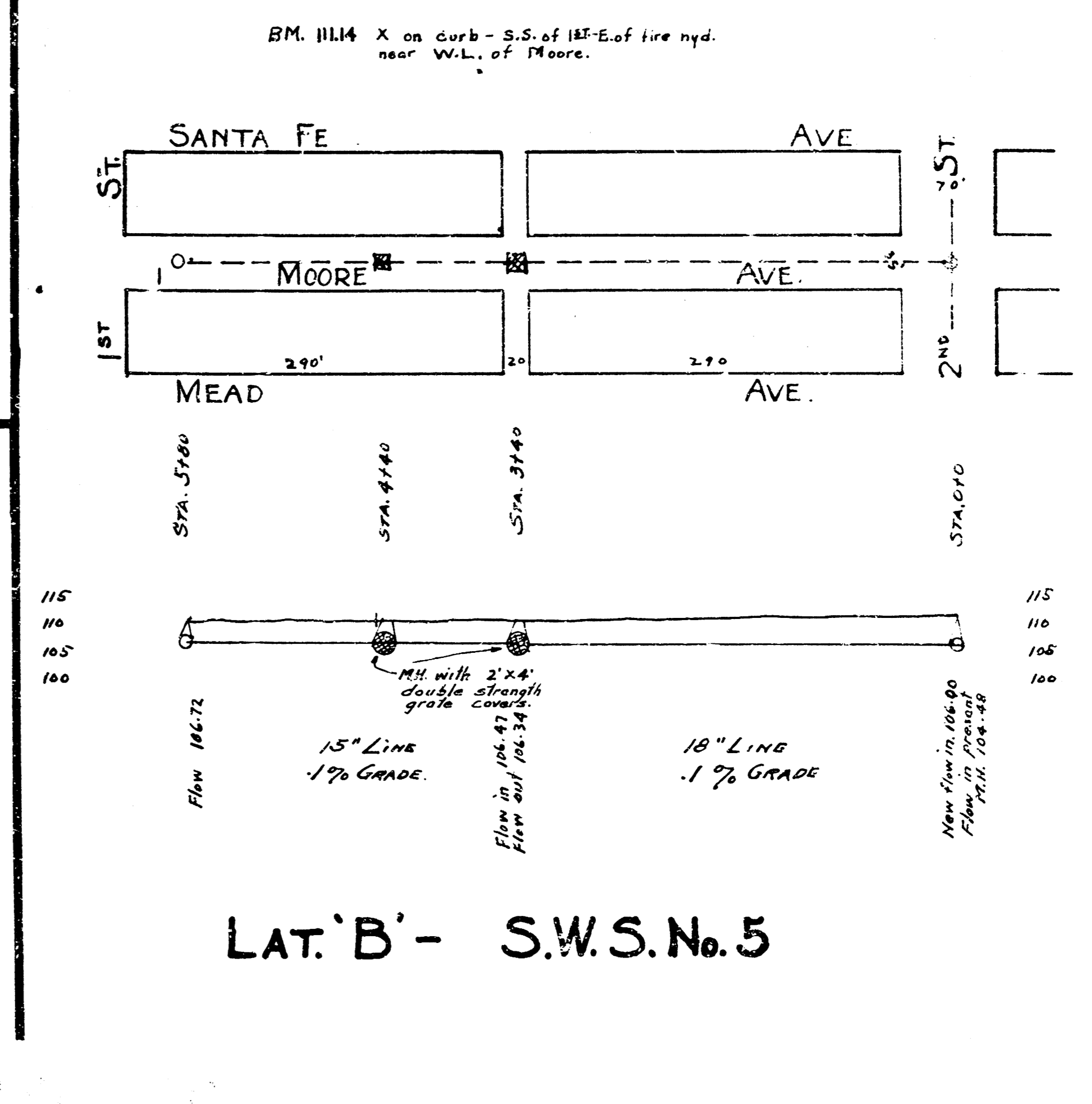
BM. 116.21 5' x 4' H.C. cor Meridian & 1st St.
**LAT. 4,
DIST. A,
S.S. No. 21**



BM. 102.35 "X" in Kensler bk. of W. N. N.W. Mohr & Clark
**LAT. 13,
DIST. C,
S.S. No. 20.**



LAT. 14, DIST. C, S.S. No. 20



LAT. B - S.W.S. No. 5

