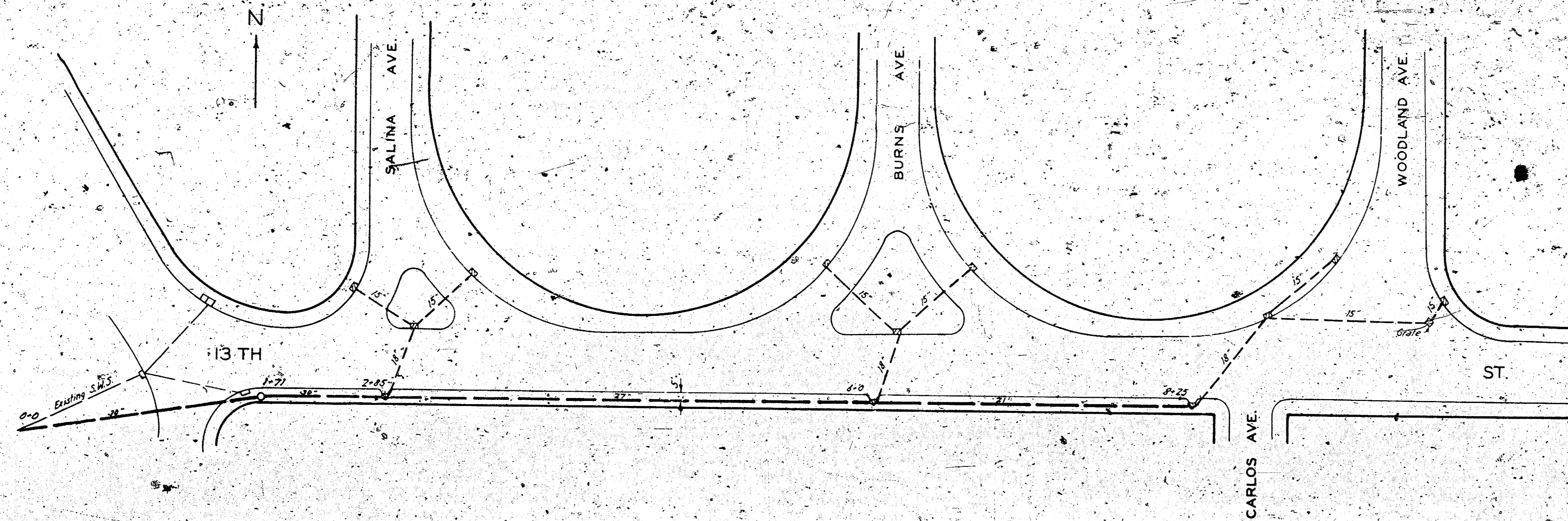


S.W.S. #29 WICHITA, KANSAS

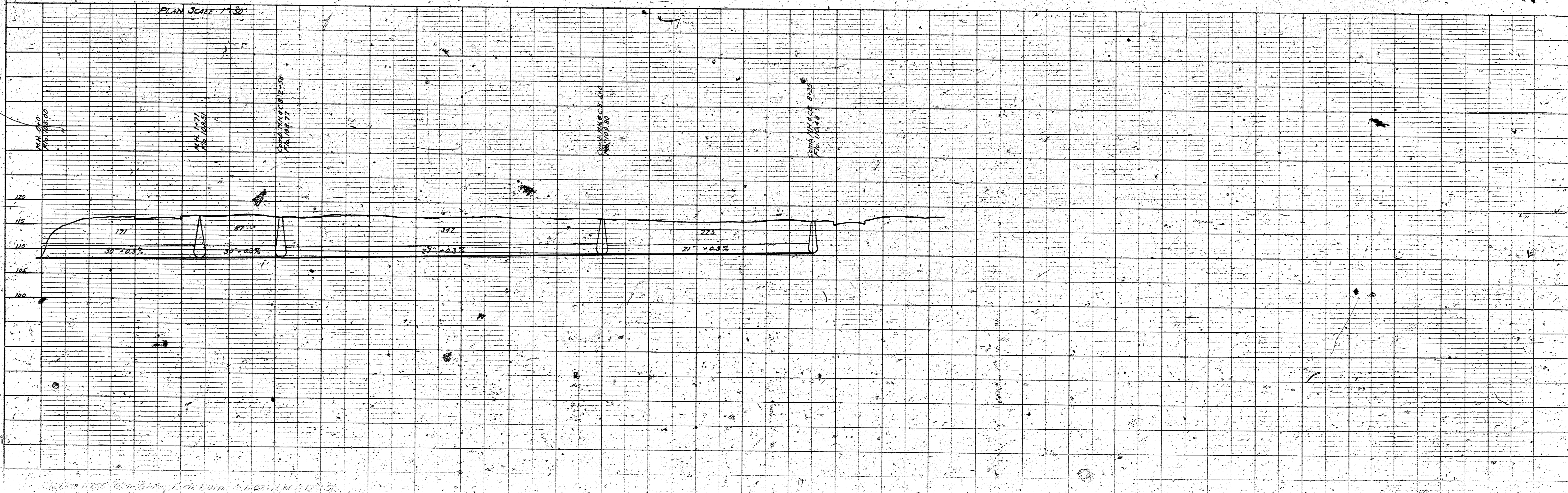


Note: Catch basin outlets (road tops) are to be approx. 4" below the gutter (low line)

ENGINEERING DEPARTMENT
CITY OF WICHITA KANSAS
P.L. BROCKWAY CITY ENGINEER
SCALE 1" = 50' DRAWN BY [Signature]
1939

PLAN
DATE: _____
PROJECT: _____
NOTE: BOOK _____
BY: _____
CHECKED: _____
DATE: _____

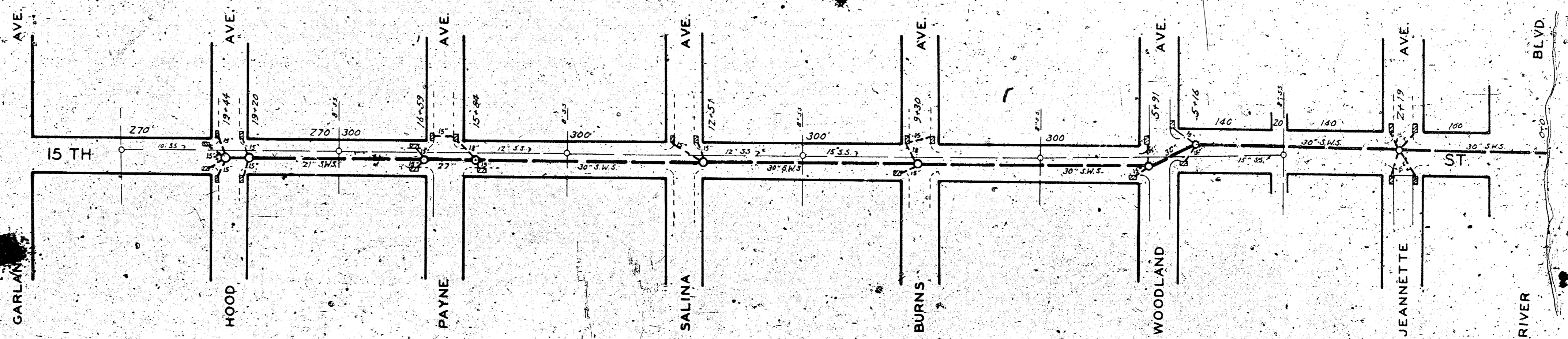
PROFILE
DATE: _____
PROJECT: _____
NOTE: BOOK _____
BY: _____
CHECKED: _____
DATE: _____



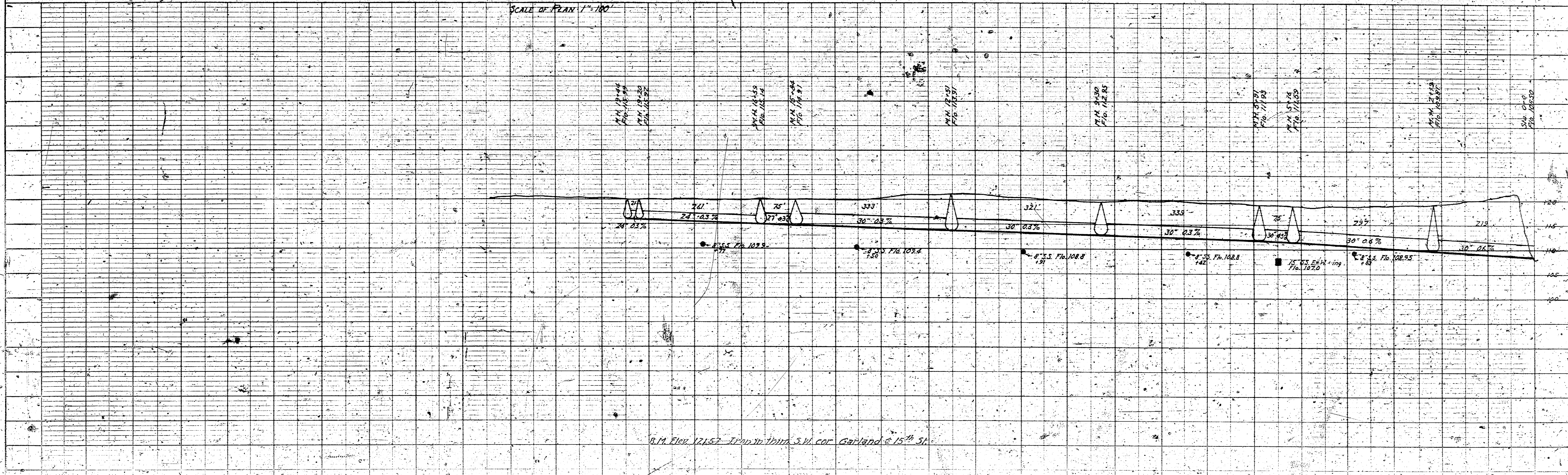
S.W.S. #29 WICHITA, KANSAS

PLAN	DATE	BY
REVISED		
NOTE BOOK	CHECKED	
NO.	BY	

PROFILE	DATE	BY
REVISED		
NOTE BOOK	CHECKED	
NO.	BY	



SCALE OF PLAN 1" = 100'



Note: Top of Catch Basin leads under
Handbars at top of man pipe except
the east side of 212' which is
2.5' higher

B.M. Elev. 121.67 - Fourth Third S.W. cor. Garland & 15th St.