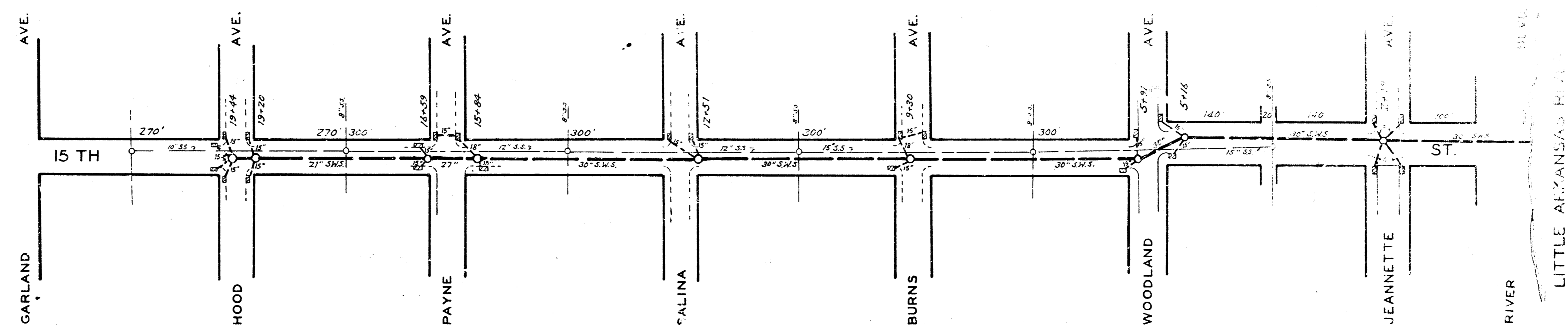
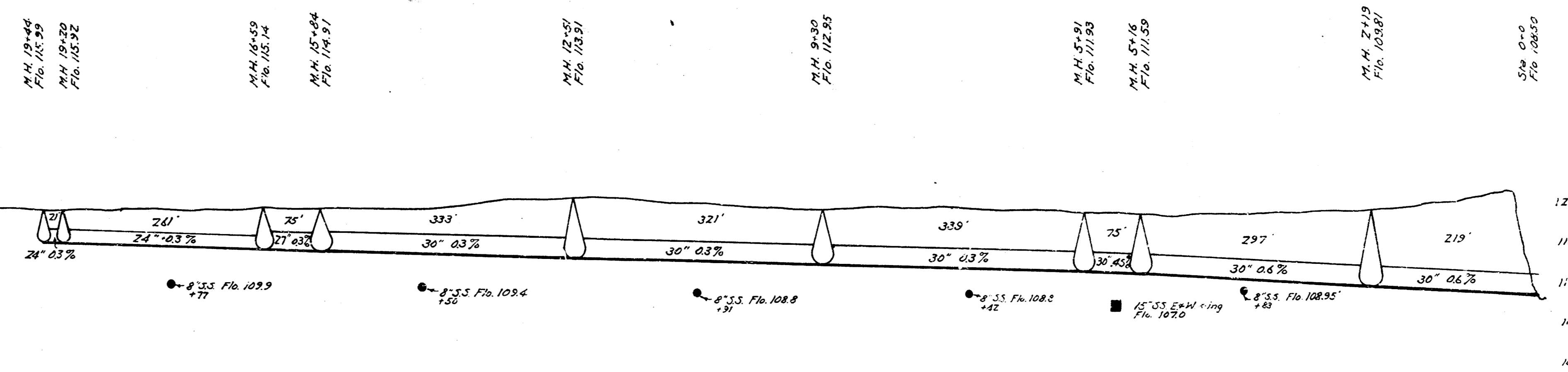


S.W.S. #29 WICHITA, KANSAS



Note: Top of Catch Basin leads enter
Manholes at top of main pipe except
the east leads at 217 which enter
2.5' higher

SCALE OF PLAN 1"=100'

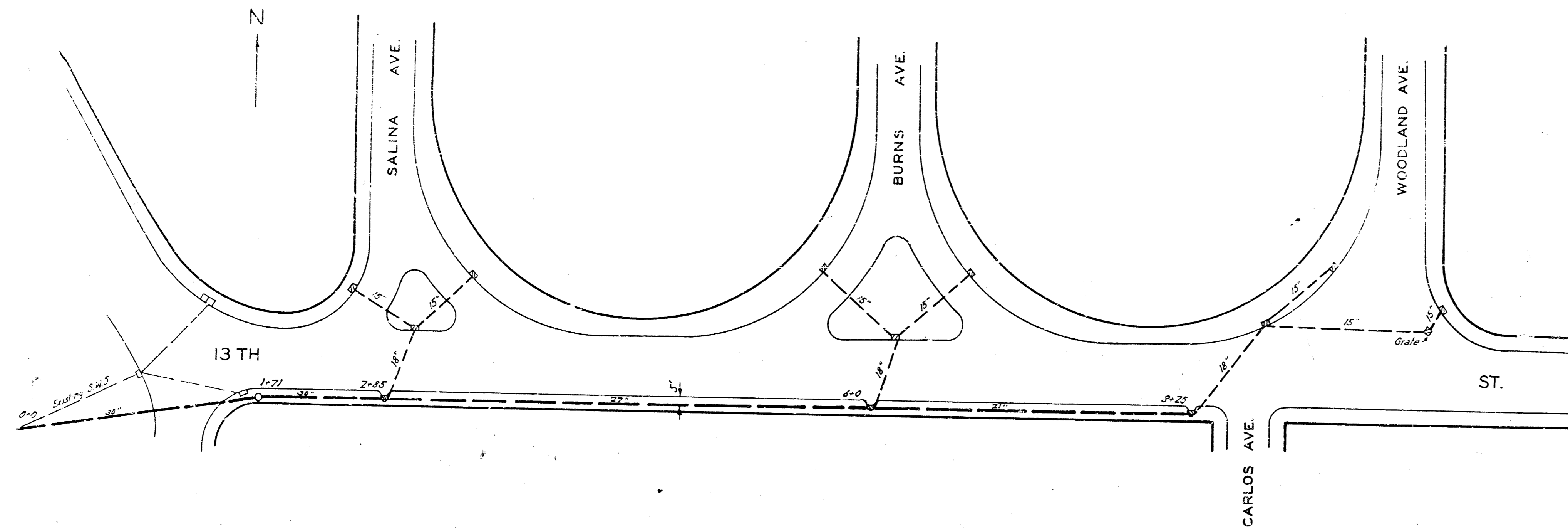


B.M. Elev. 121.57 Iron in trim S.W. cor. Garland @ 15th St.

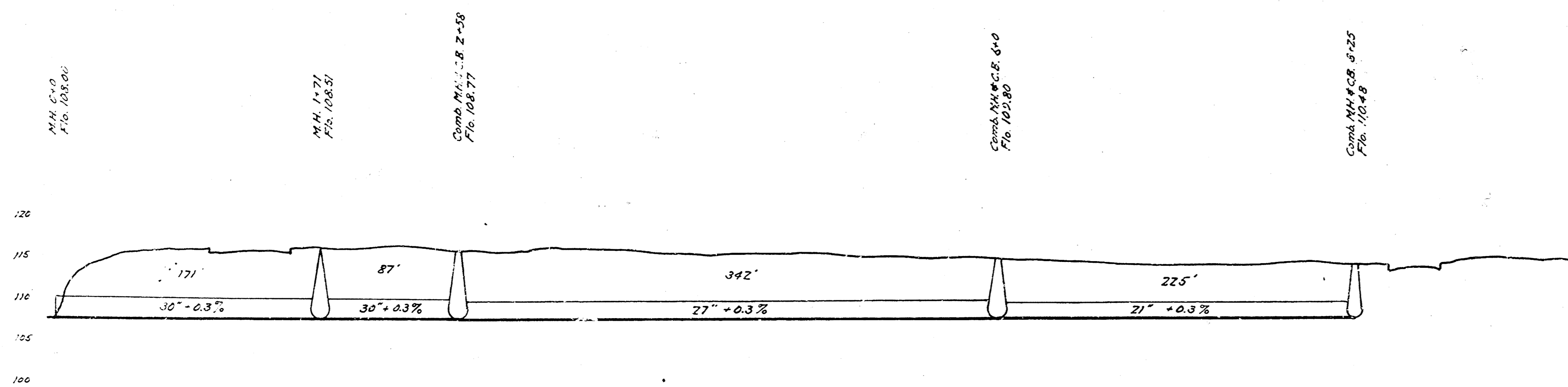
#2 of 2 PLAN & PROFILE SHEETS

20 19 18 17 16 15 14 13 12 11 10 9 8 7 6 5 4 3 2 1 0

S.W.S. #29 WICHITA, KANSAS



ENGINEERING DEPARTMENT
 CITY OF WICHITA KANSAS
 P.L. BROCKWAY CITY ENGINEER
 SCALE 1" = 50' DRAWN BY [Signature]
 1939



B.M. Elev 11755' 6" in Globe E. of Burns at 1802' N. of 13th St.