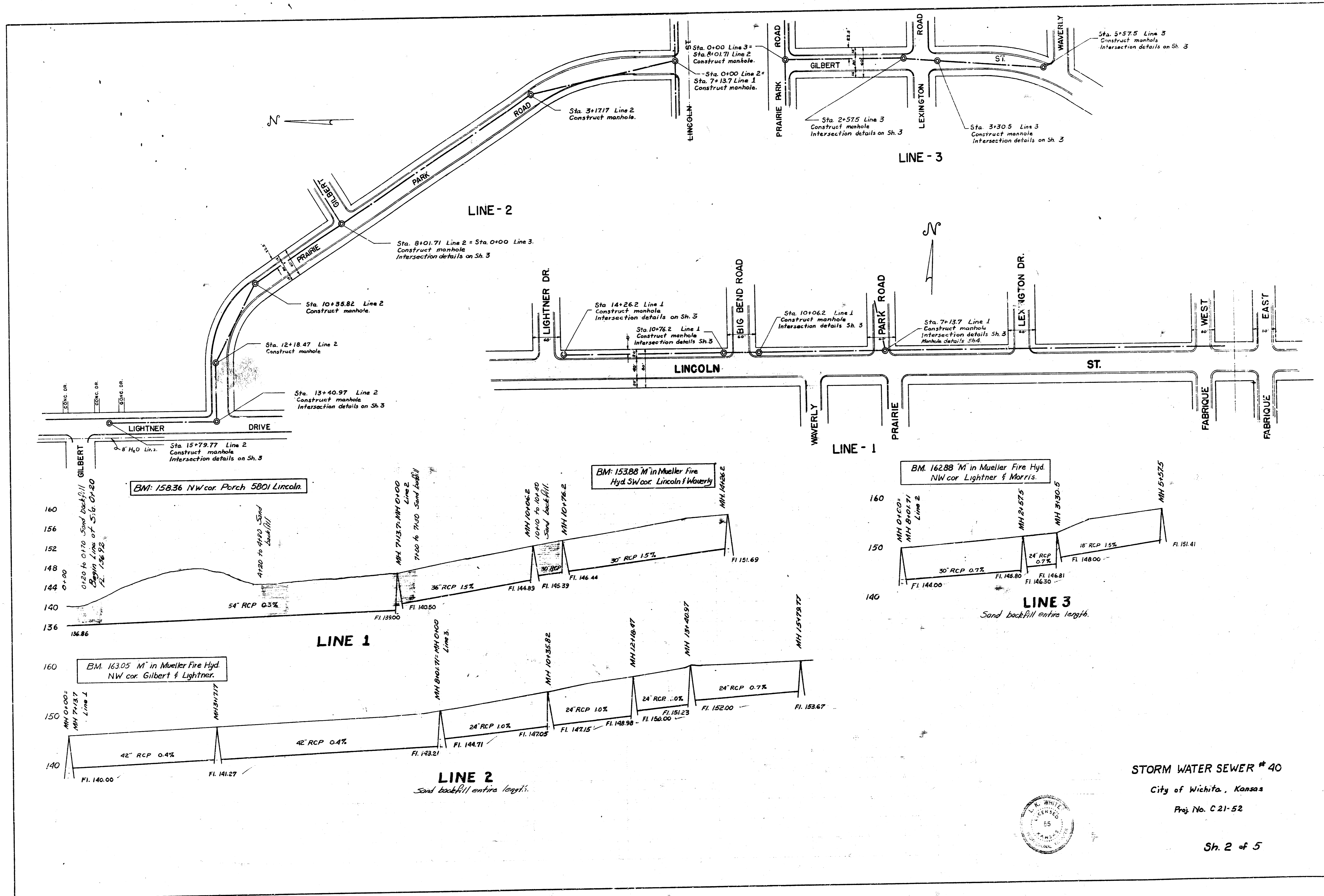


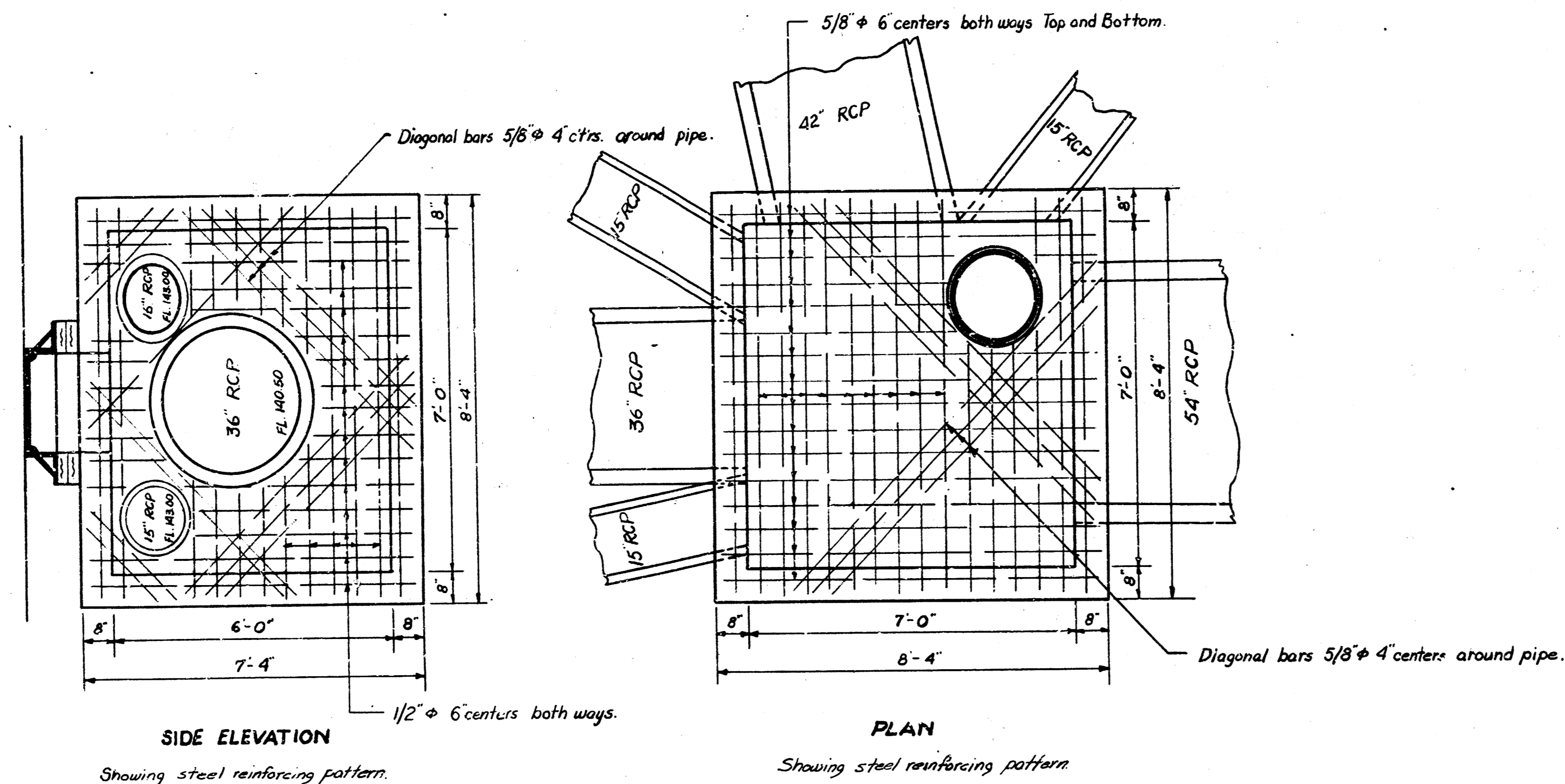
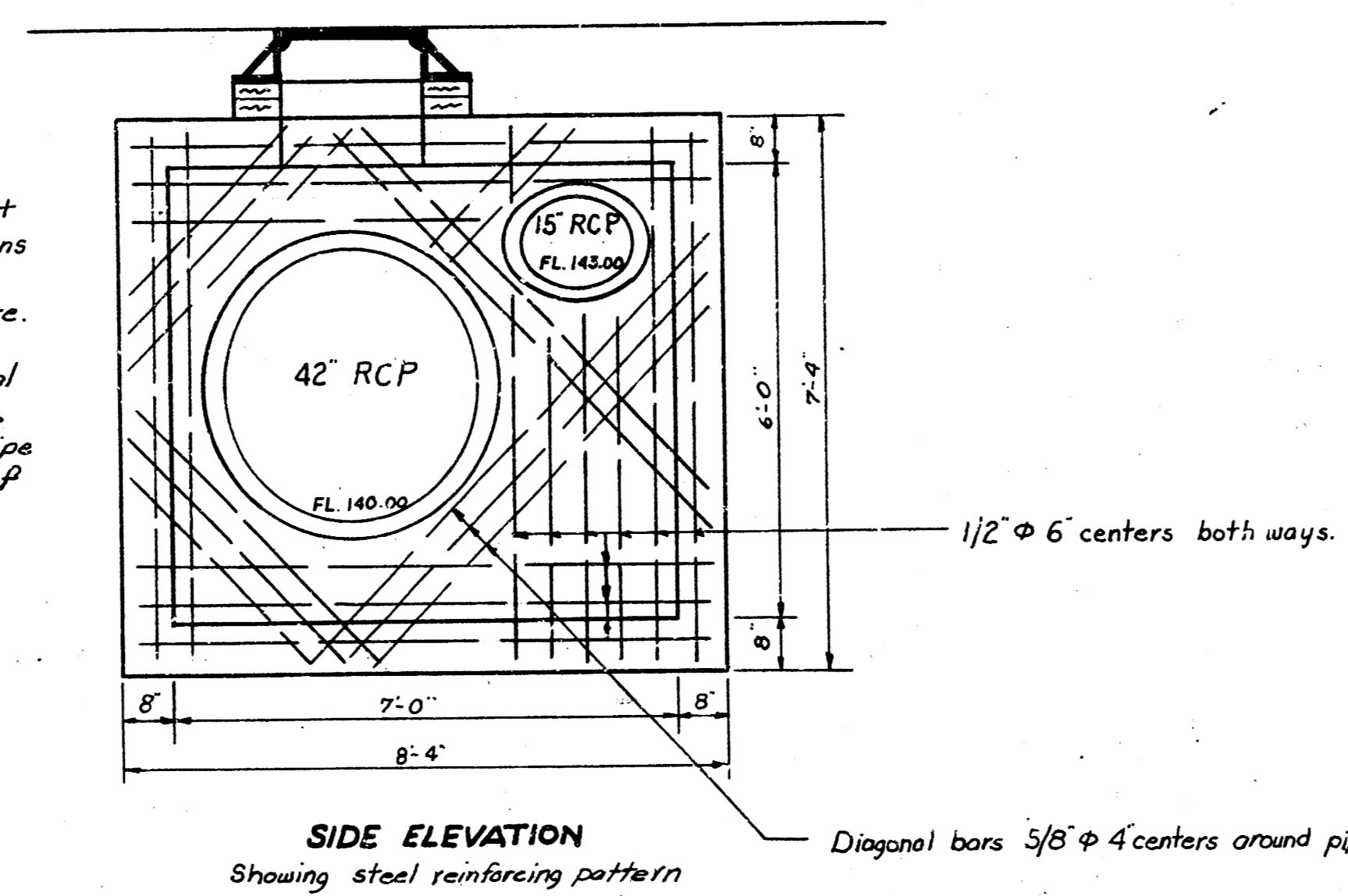
BENEFIT DISTRICT
 STORM WATER SEWER NO. 40
 City of Wichita Kansas
 L. K. White City Engineer
 Aug. 1951 Proj. No. C21-52



STORM WATER SEWER # 40
 City of Wichita, Kansas
 Proj. No. C 21-52



NOTE: Concrete for manhole shall contain not less than 1.65 barrels of cement per cu. yd. In no event shall the total water content exceed 6.25 gallons per sack of cement. The mixture of fine and coarse aggregate shall be such as will produce a maximum density and the most workable mixture. In general pipes will enter and leave at various positions. Where possible bend bars around pipe. Where pipes are large use 3/8" ϕ diagonal bars as shown. Floor of manhole to be shaped for flow and drainage with concrete. No deductions in concrete quantities shall be made for pipe openings. No additions in concrete quantities shall be made for shaping floor of manhole. Internal vibrator to be used for placing concrete.



REINFORCED CONCRETE BOX
STA. 7+137 Line 1.

STORM WATER SEWER No. 40
City of Wichita Kansas
Proj. No. C21-52

