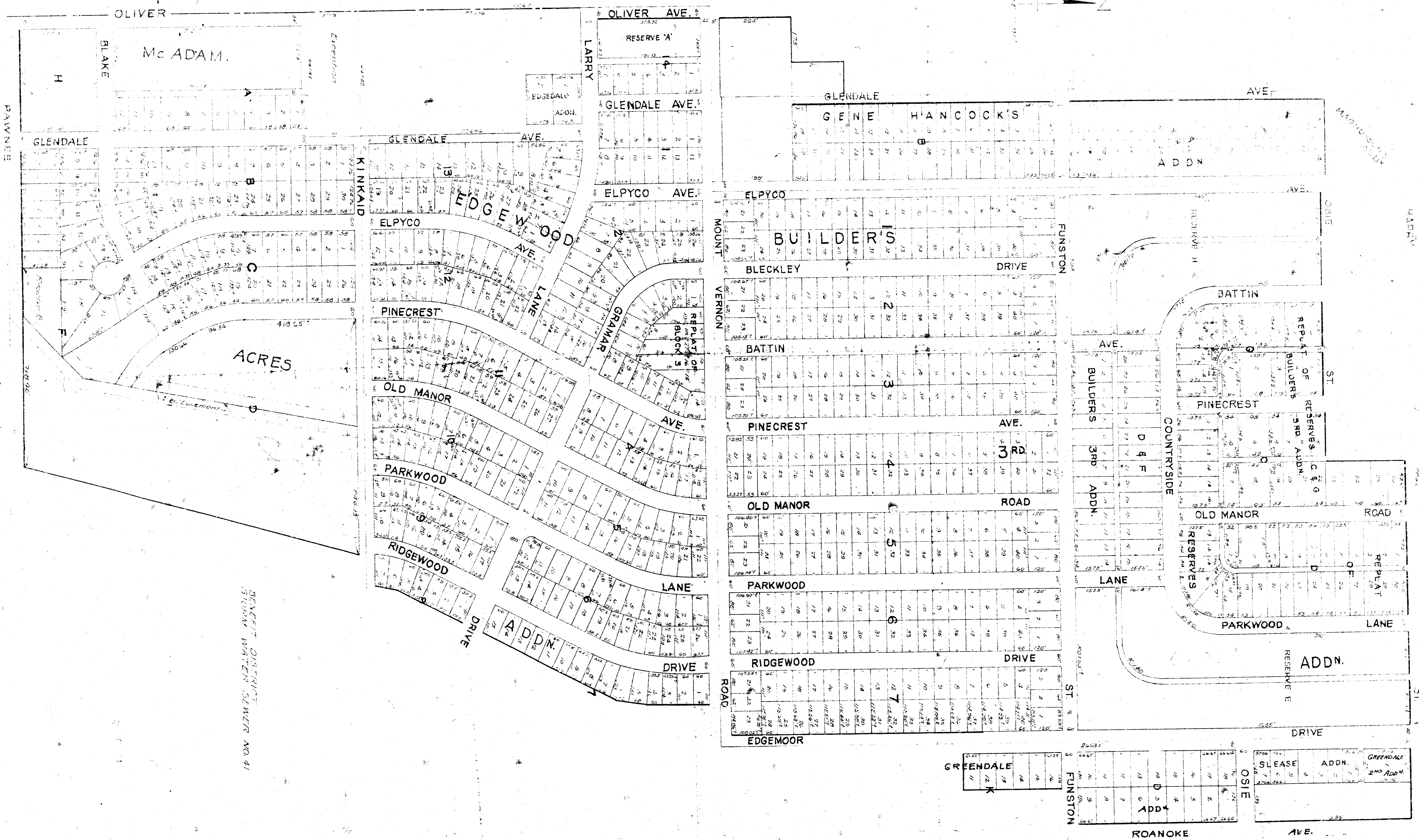
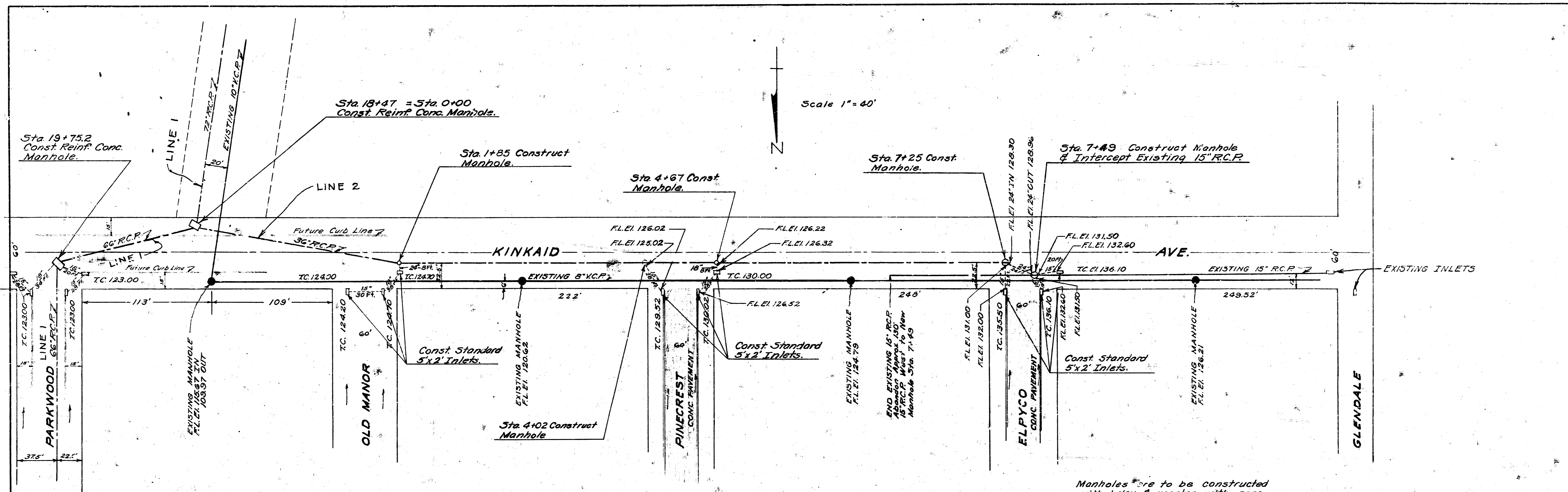


STORM WATER SEWER DIST NO. 41
 CITY OF WICHITA KANSAS
 L. WHITE, CITY ENGINEER
 Proj. No. C-21-34
 AUG 15, 1951

SCALE 1"=50'



SEWER DISTRICT STORM WATER SEWER NO. 41

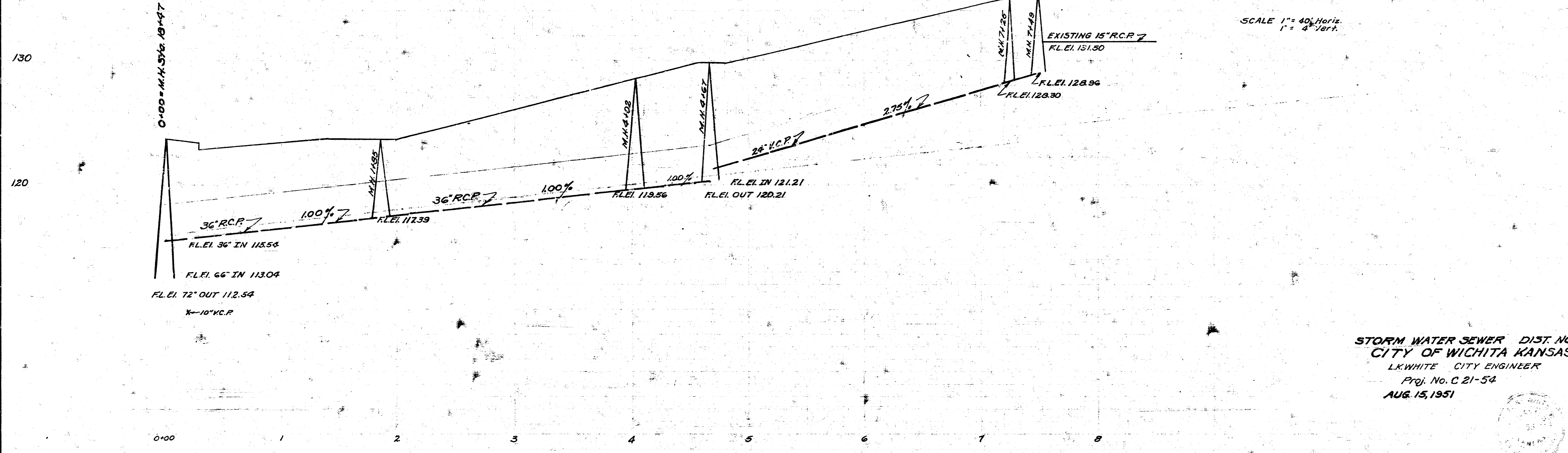


Scale 1" = 40'

NOTE: Sand backfill cross street trenches on Kinkaid & intersecting streets.
 Total for this sheet 929 lin. feet (M.H. Sta. 0+00 to M.H. Sta. 7+49)
 TRENCH FOR 36" PIPE 467 lin. feet (laterals for M.H. Sta. 19+75.2)
 36" 230
 18" 62
 15" 80

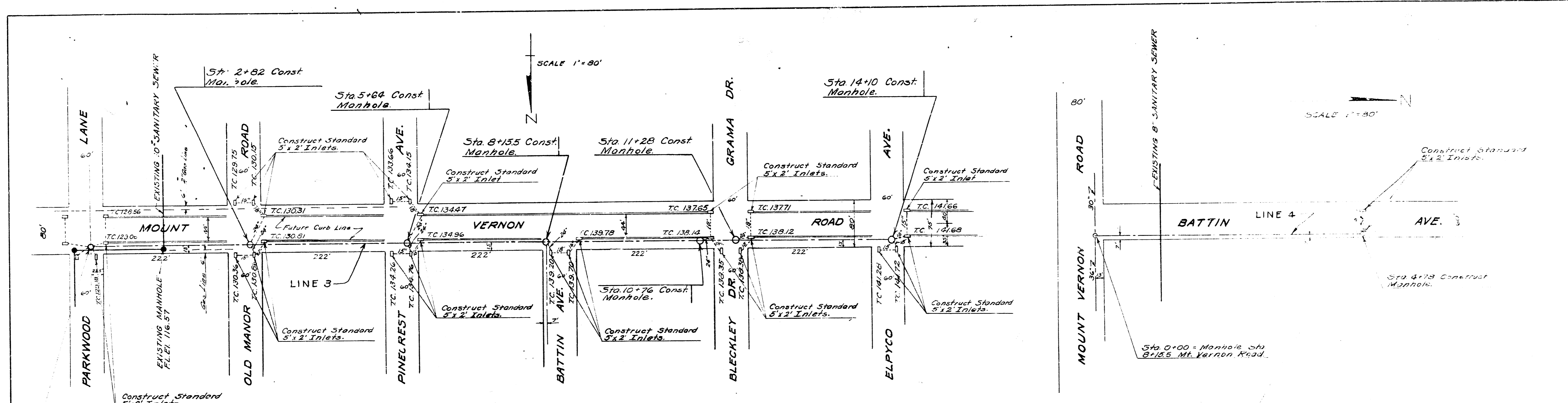
Manholes are to be constructed with brick & mortar with conc. base unless otherwise noted.

Date 7-13-51
 Drawn by J.L.A.
 Checked by
 Note Book No.



SCALE 1" = 40' Horiz.
 1" = 4' Vert.

STORM WATER SEWER DIST. NO. 41
 CITY OF WICHITA KANSAS
 L.K. WHITE CITY ENGINEER
 Proj. No. C 21-54
 AUG. 15, 1951



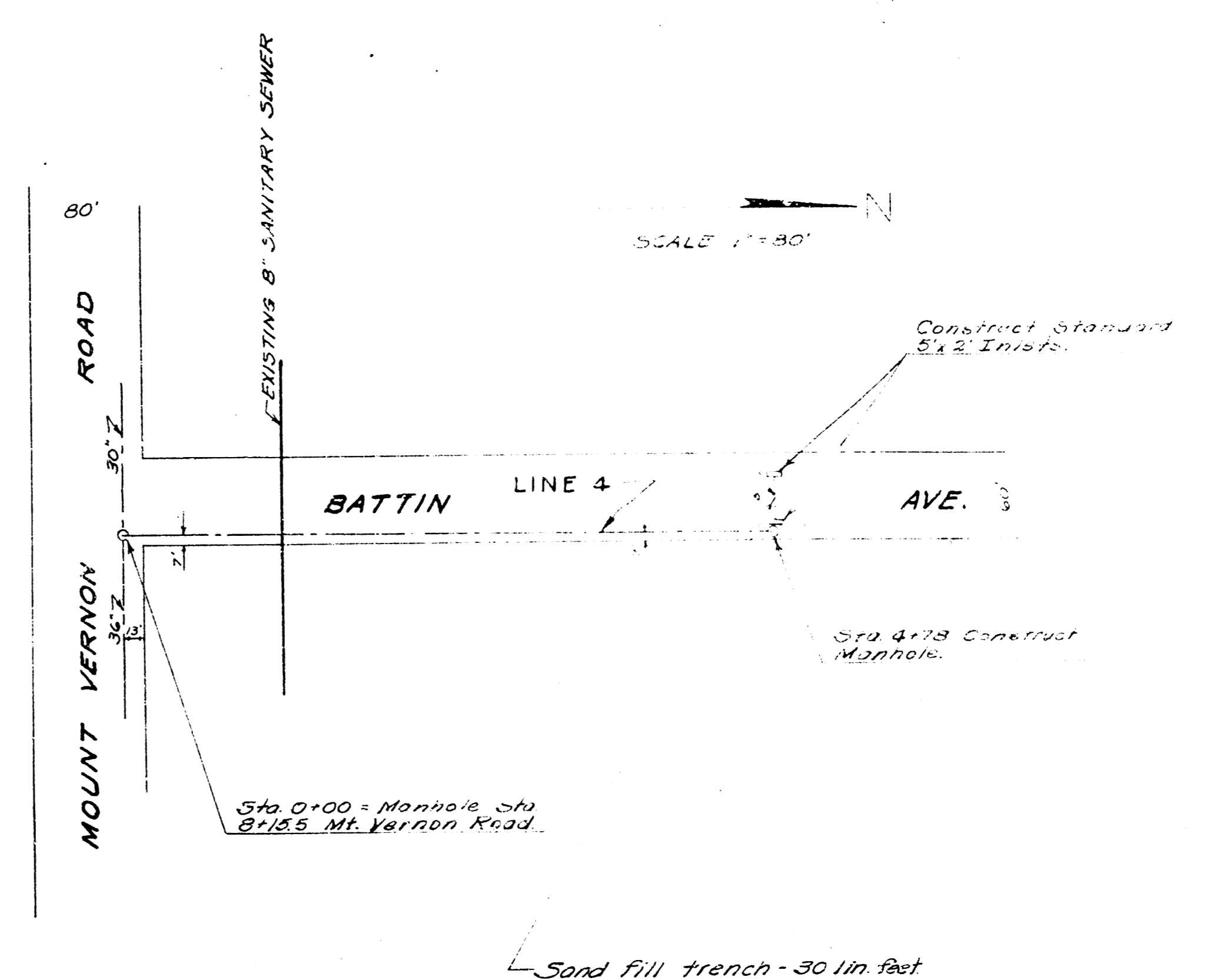
Sta 0+00 - Manhole Sta.
3+15.6 on Parkwood Lane.
Reinf. Conc.
See sheet #11 for detail

NOTE: Mount Vernon Road to be Paved
from the E. Line of Oliver to the W. Line of Edgemoor.
Old Manor Road to be Paved
on both sides of Mount Vernon Road.

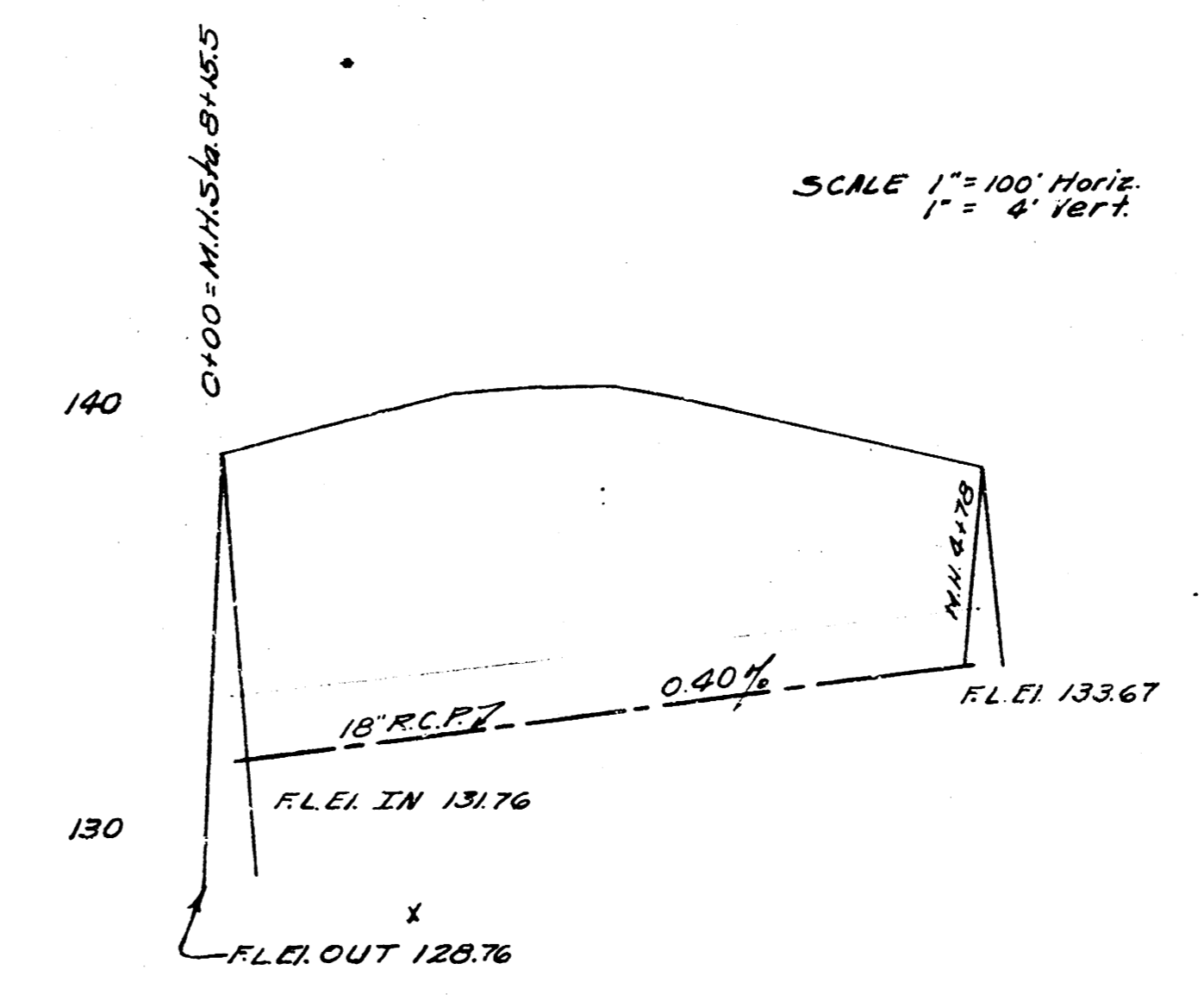
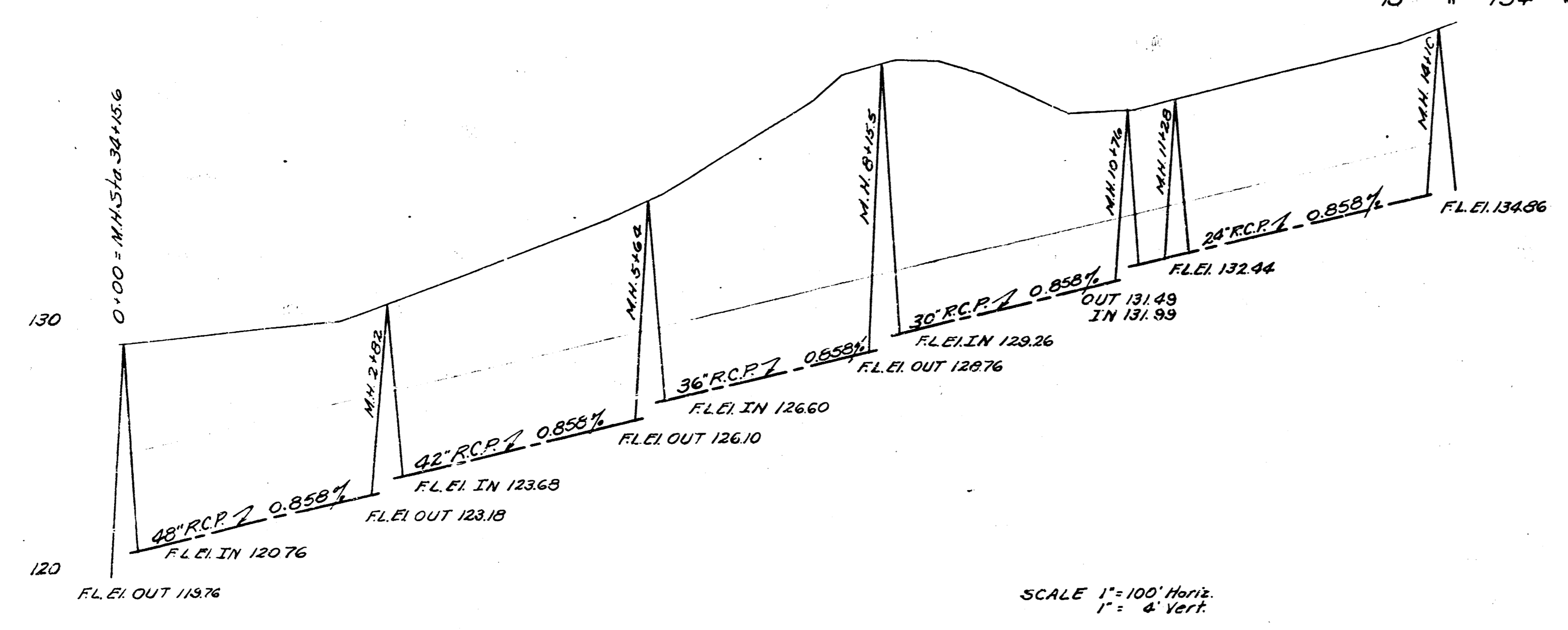
NOTE: Sand backfill cross
street trenches on Mt. Vernon
Road & intersecting streets.
Total for this sheet 712 lin. feet

TRENCH FOR 48" PIPE	
42"	35 "
36"	10 "
30"	46 "
24"	232 "
18"	160 "
15"	154 "

Manholes are to be constructed
with brick & mortar with conc.
base unless otherwise noted.

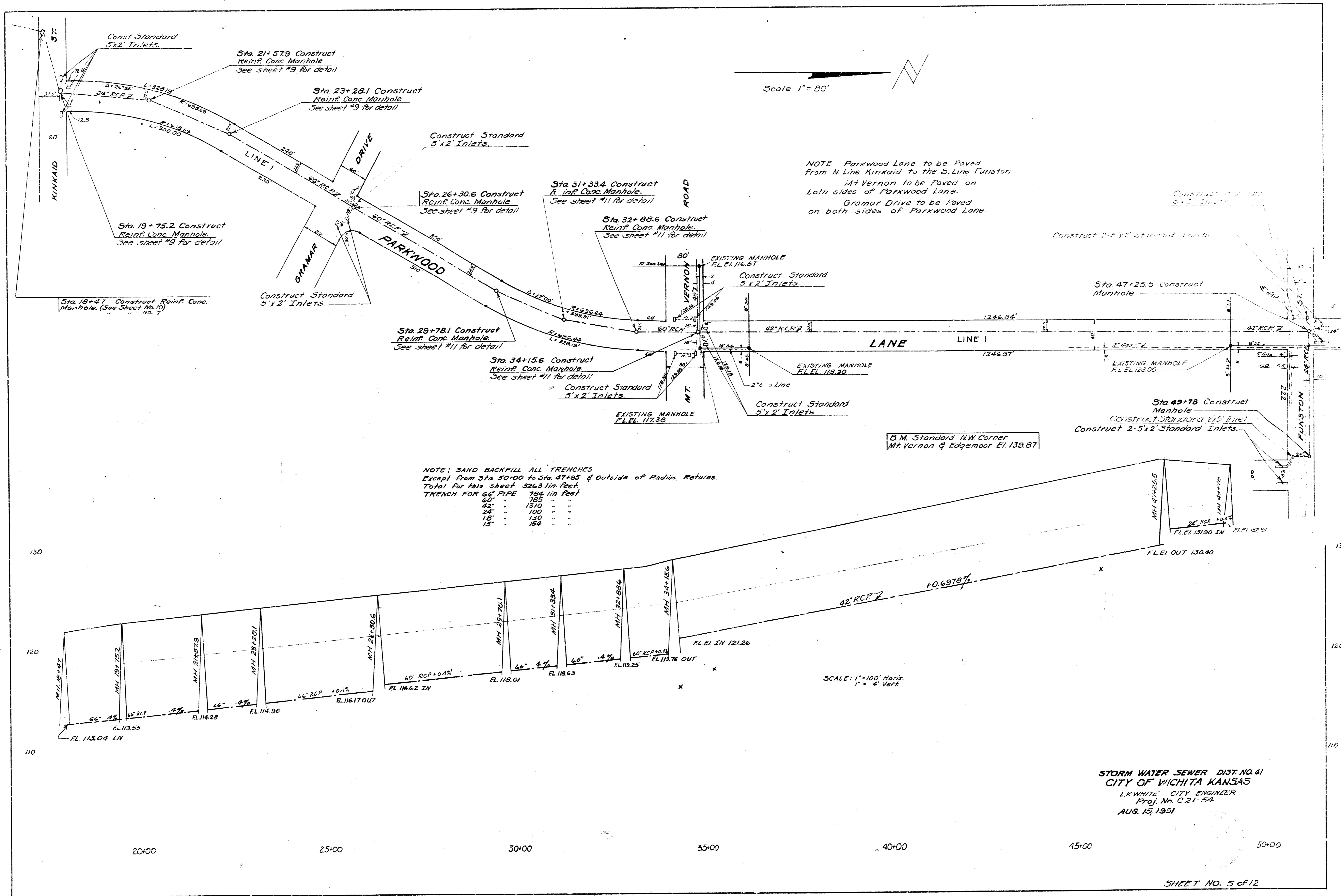


Sand Fill Trench - 30 in. Post



Date 7-16-51
Drawn by J.L.A.
Checked by
1616 Book No.

STORM WATER SEWER DIST. NO. 41
CITY OF WICHITA KANSAS
L.K. WHITE CITY ENGINEER
Proj. No. C21-54
AUG. 15, 1951



NOTE Parkwood Lane to be Paved
 From N. Line Kinkaid to the S. Line Funston.
 Mt. Vernon to be Paved on
 Both sides of Parkwood Lane.
 Grammar Drive to be Paved
 on both sides of Parkwood Lane.

NOTE: SAND BACKFILL ALL TRENCHES
 Except from Sta. 50+00 to Sta. 47+95 of Outside of Radius Returns.
 Total for this sheet 3263 lin. feet.
 TRENCH FOR 60" PIPE 794 lin. feet.
 60" 385
 42" 1510
 24" 100
 18" 130
 15" 154

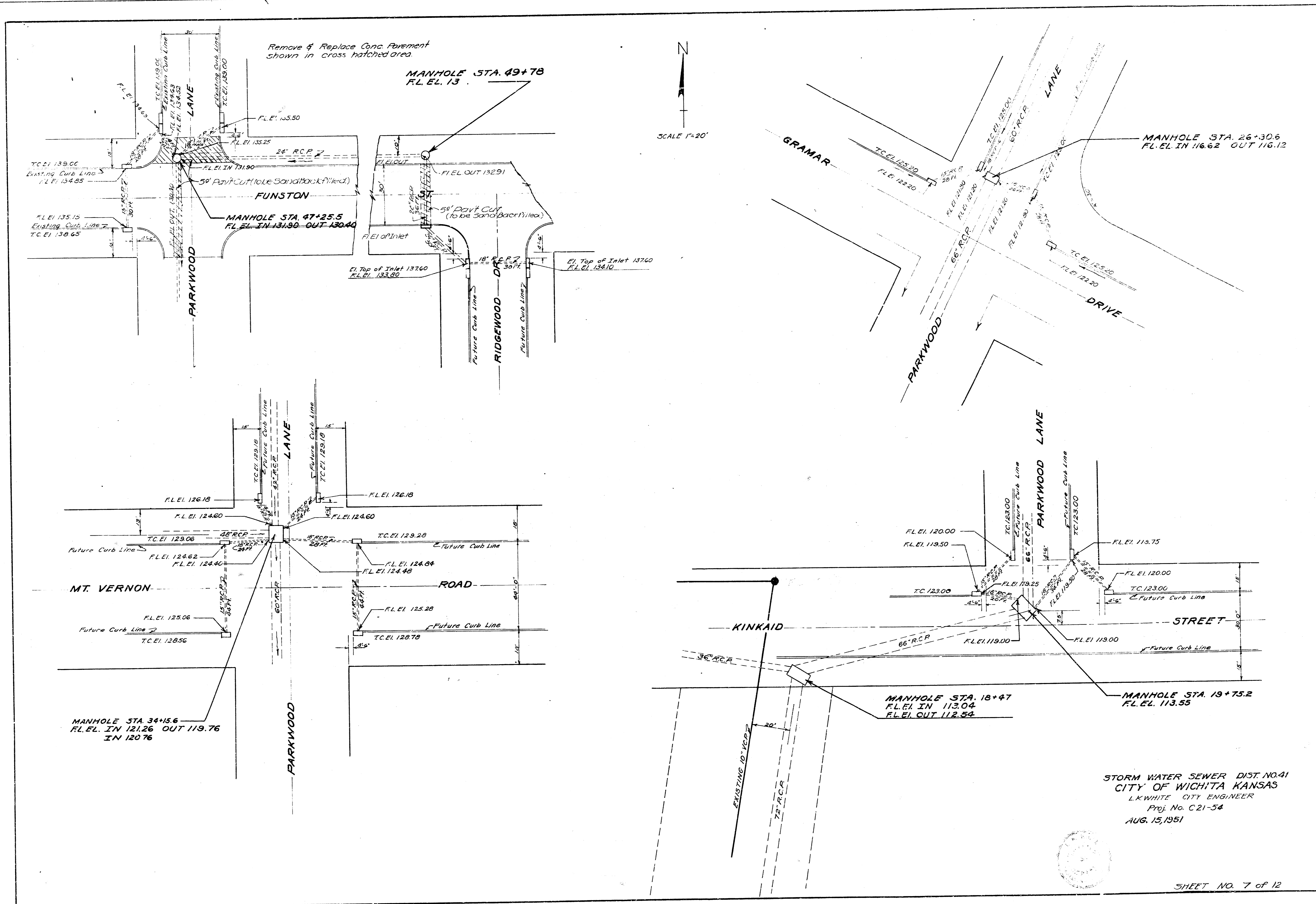
B.M. Standard N.W. Corner
 Mt. Vernon & Edgemoor El. 139.87

Date 7-12-51
 Drawn by J.L.A.
 Checked by Note Book No. 38 Y

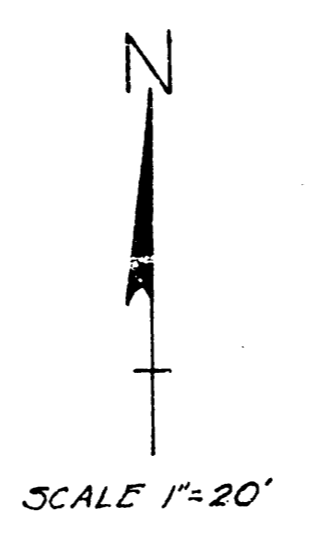
SCALE: 1"=100' Horiz.
 1"=4' Vert.

STORM WATER SEWER DIST. NO. 41
 CITY OF WICHITA KANSAS
 L.K. WHITE, CITY ENGINEER
 Proj. No. C.21-54
 AUG. 12, 1951

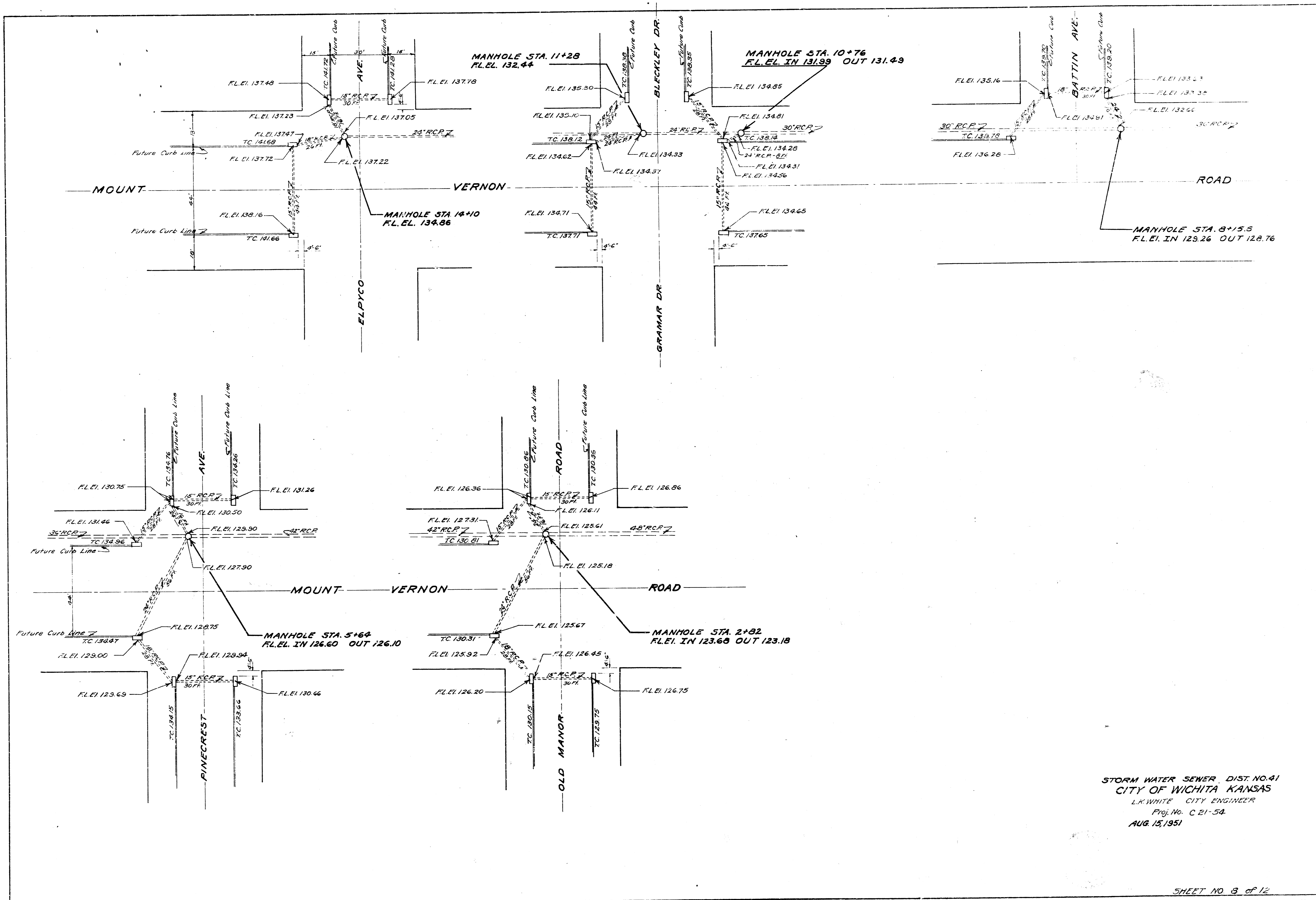
SHEET NO. 5 of 12



Remove & Replace Conc. Pavement
shown in cross hatched area.

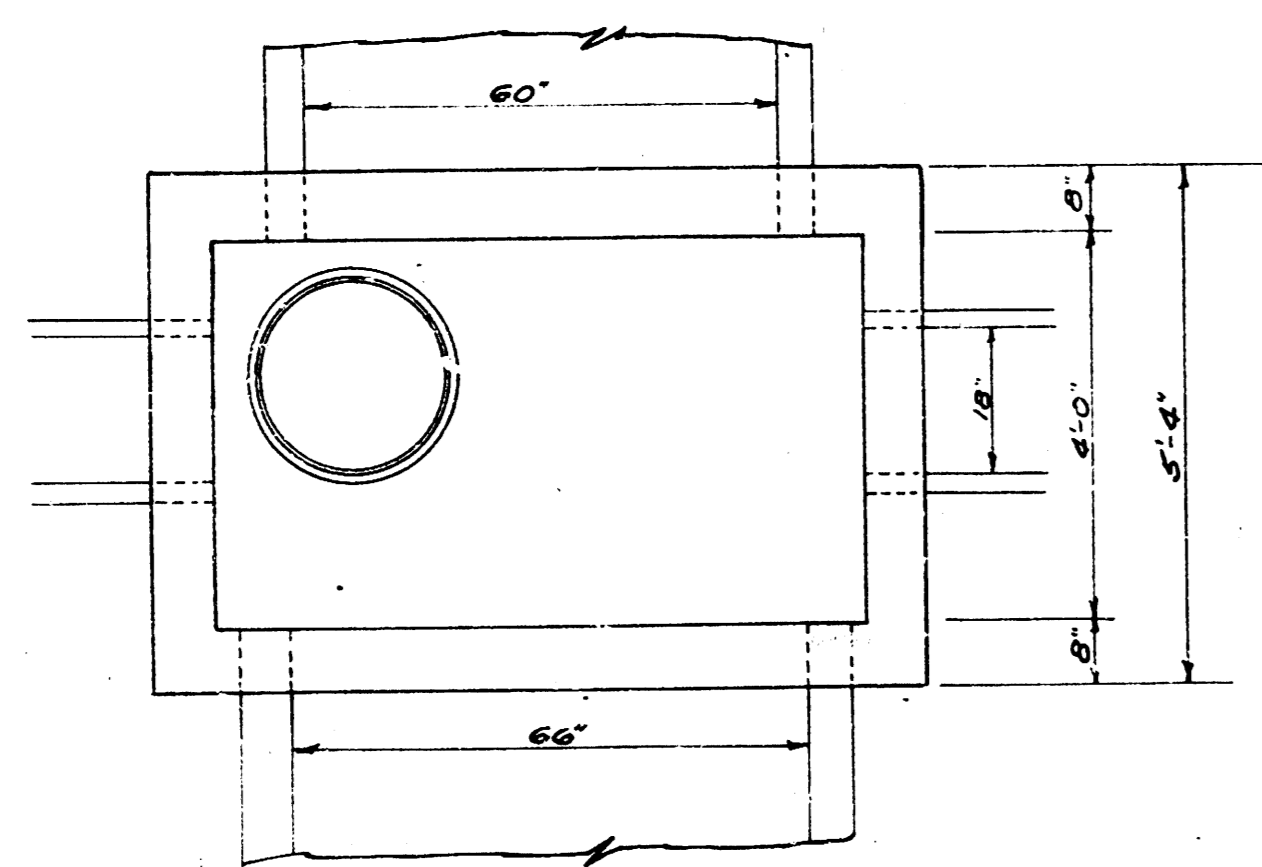


STORM WATER SEWER DIST. NO. 41
CITY OF WICHITA KANSAS
L.K. WHITE CITY ENGINEER
Proj. No. C 21-54
AUG. 15, 1951

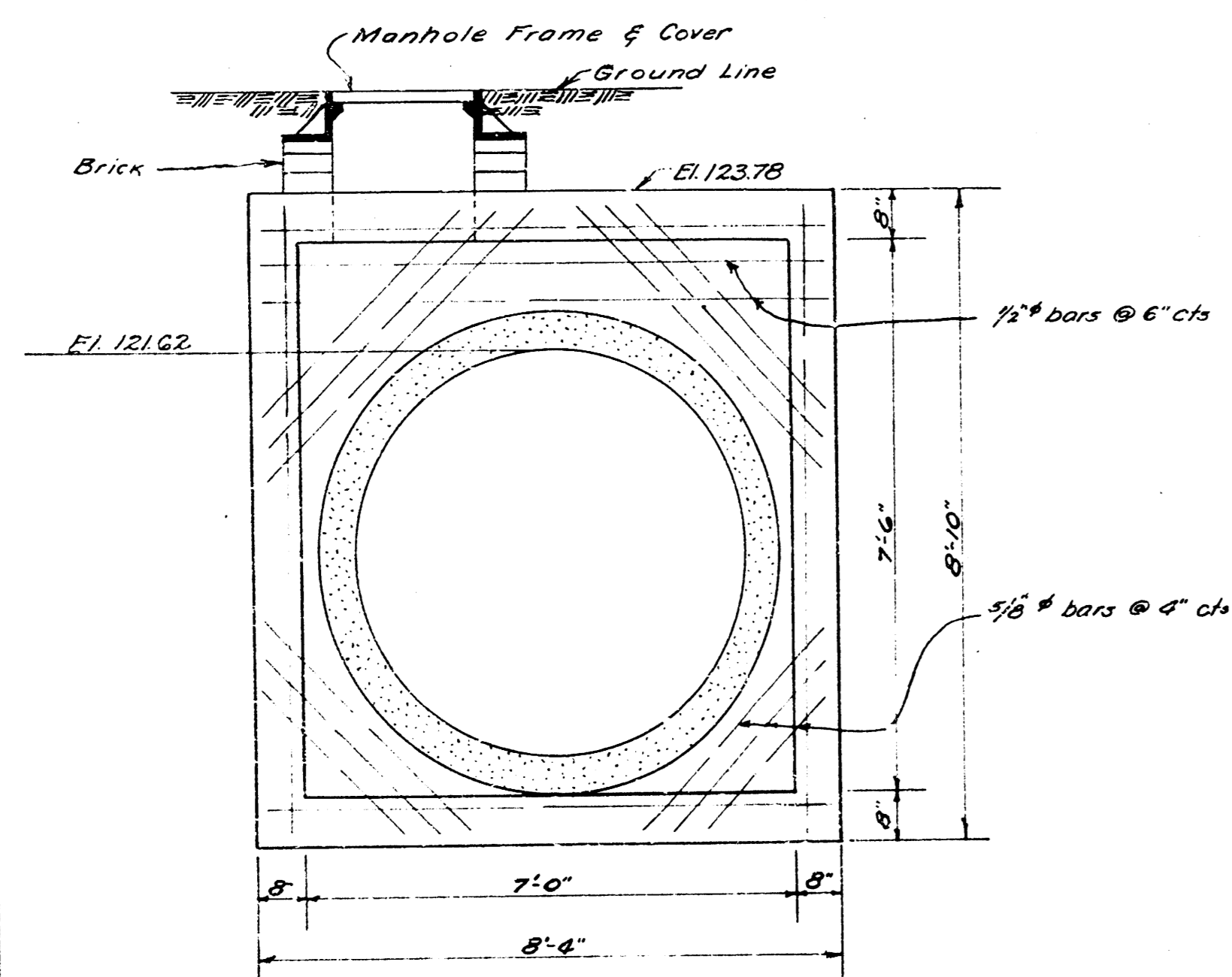


STORM WATER SEWER, DIST. NO. 41
 CITY OF WICHITA, KANSAS
 L.K. WHITE, CITY ENGINEER
 Proj. No. C 21-54
 AUG. 13, 1951

MANHOLE STA. 26+30.6 LINE 1

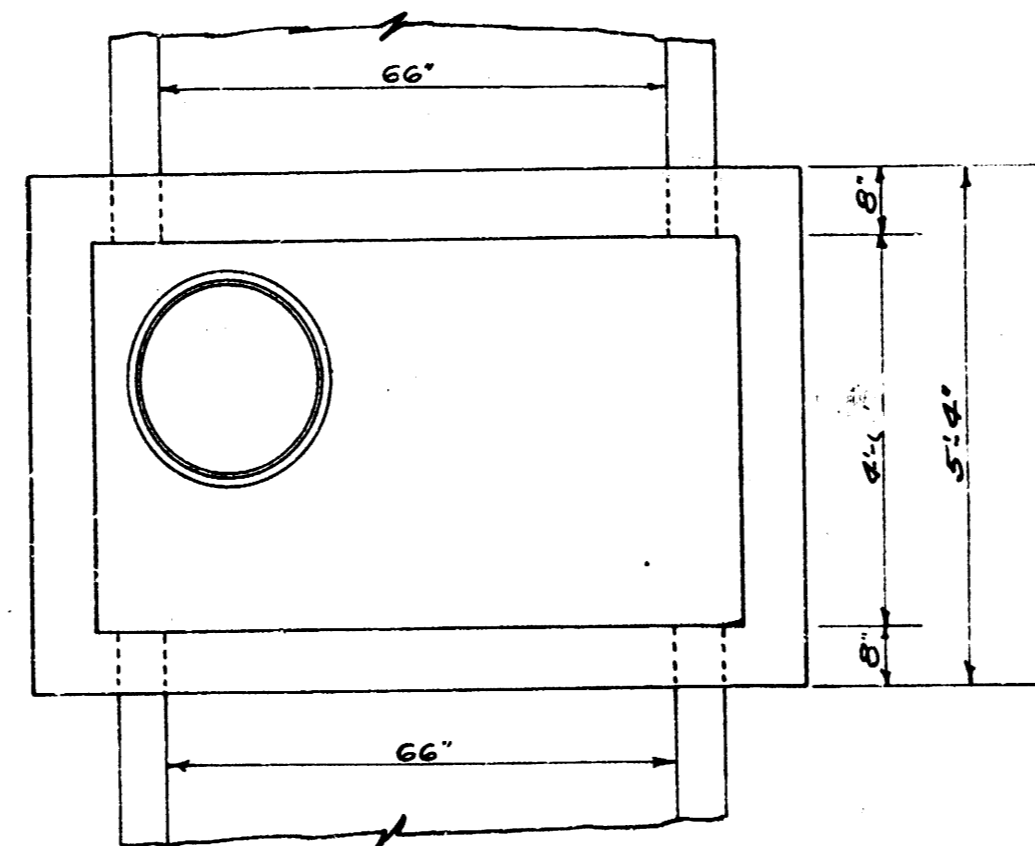


PLAN VIEW

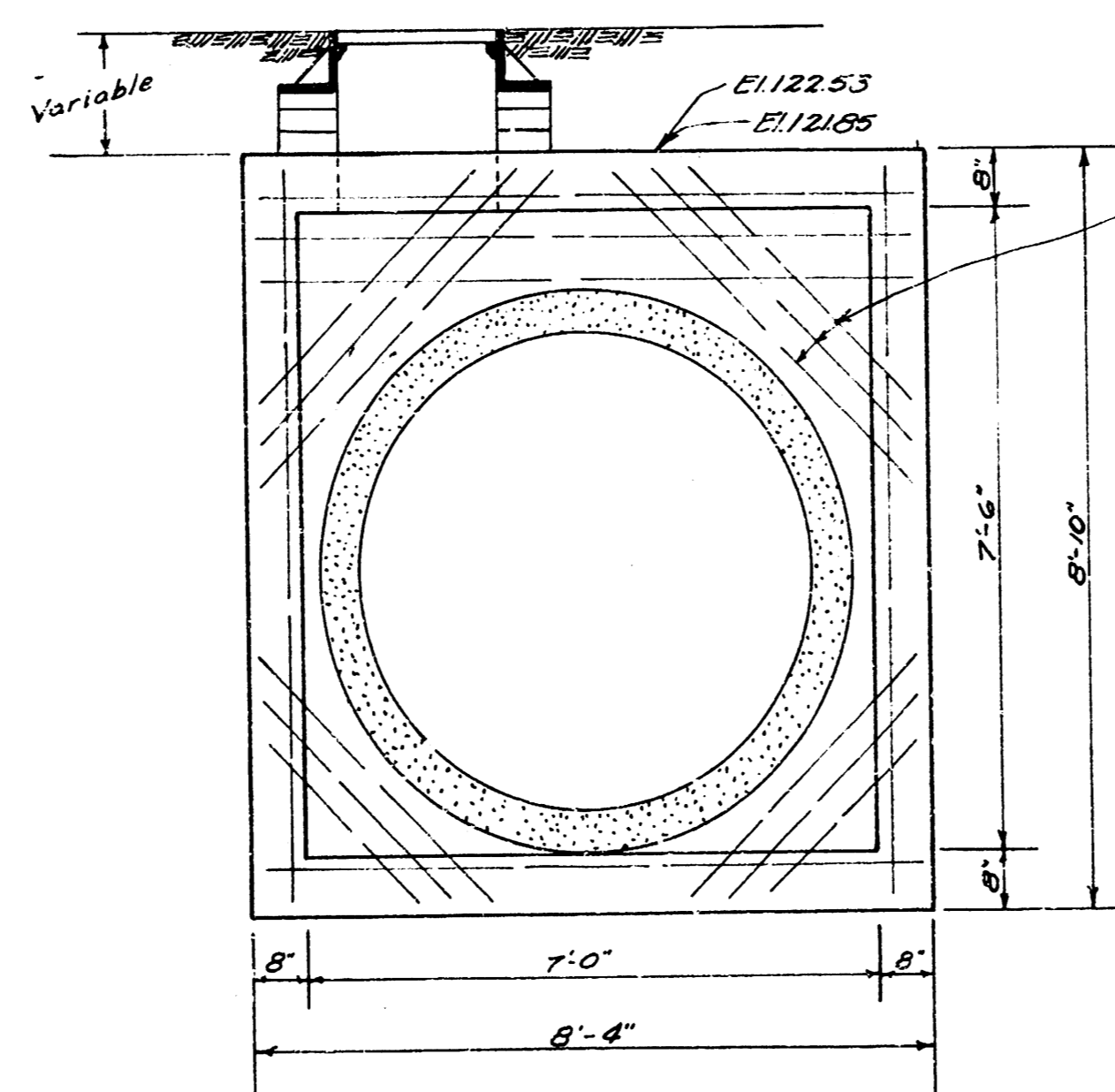


ELEVATION

MANHOLE STA. 23+28.1 LINE 1
" 21+57.9 " 1

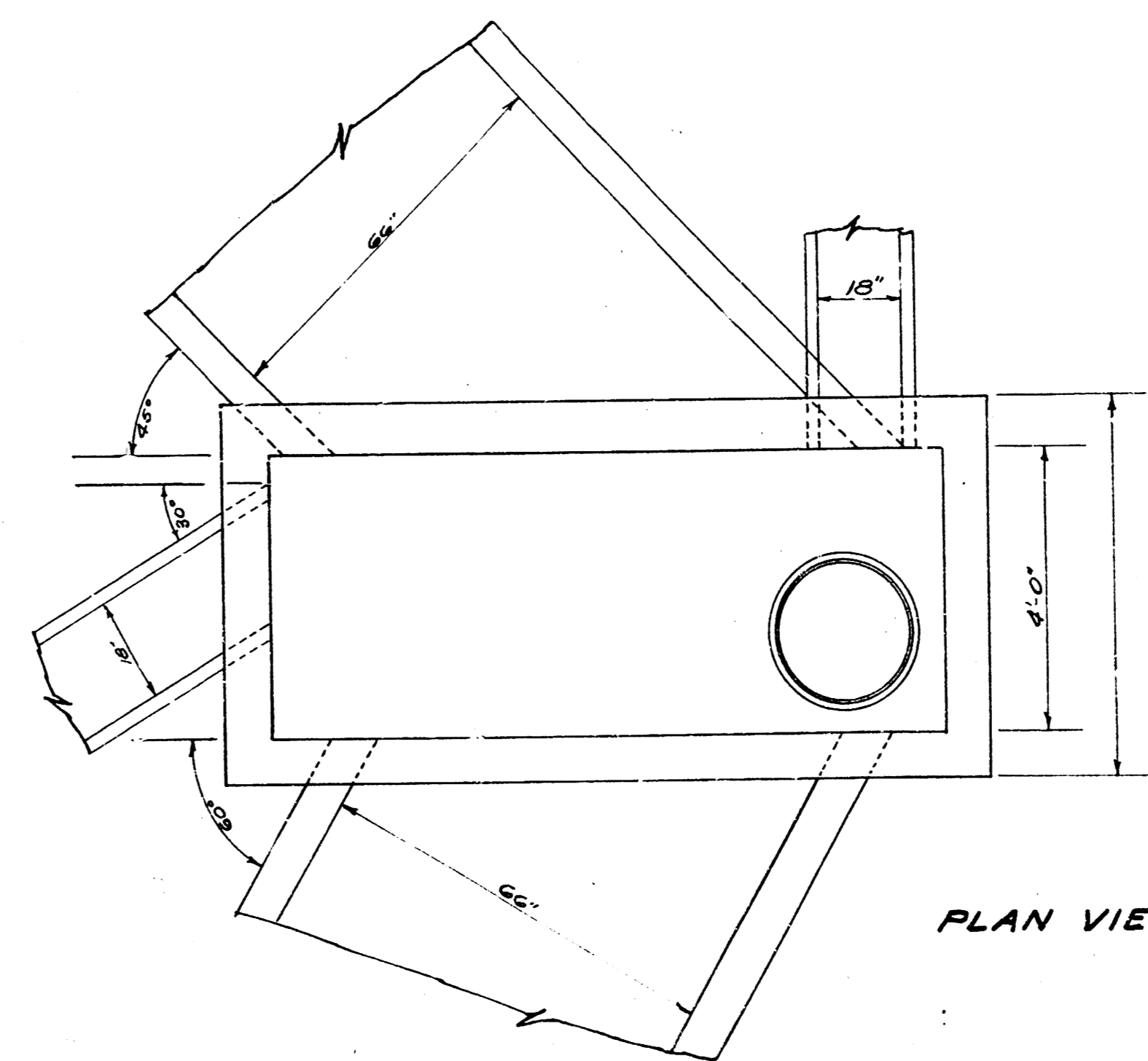


PLAN VIEW

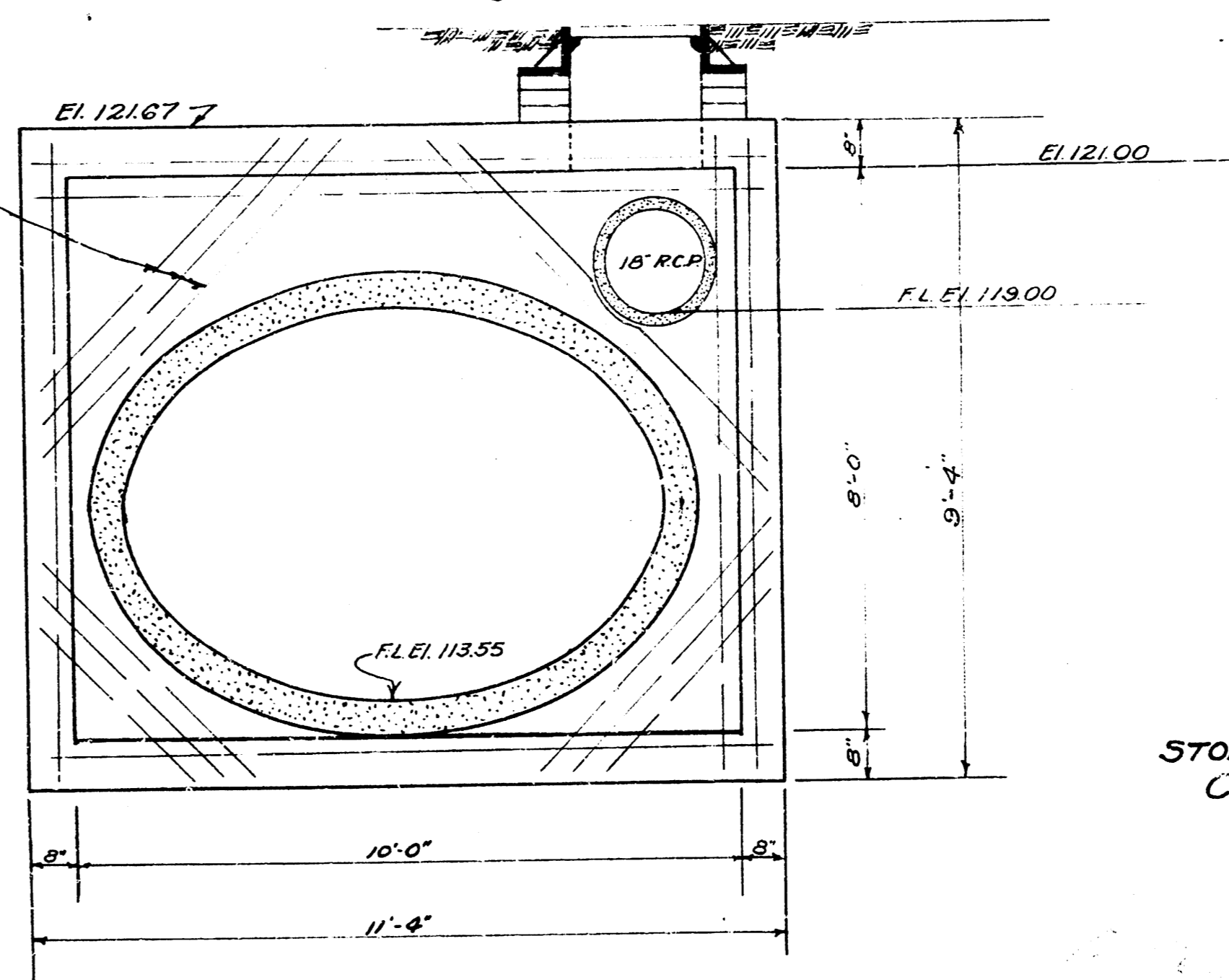


ELEVATION

MANHOLE STA. 19+75.2 LINE 1



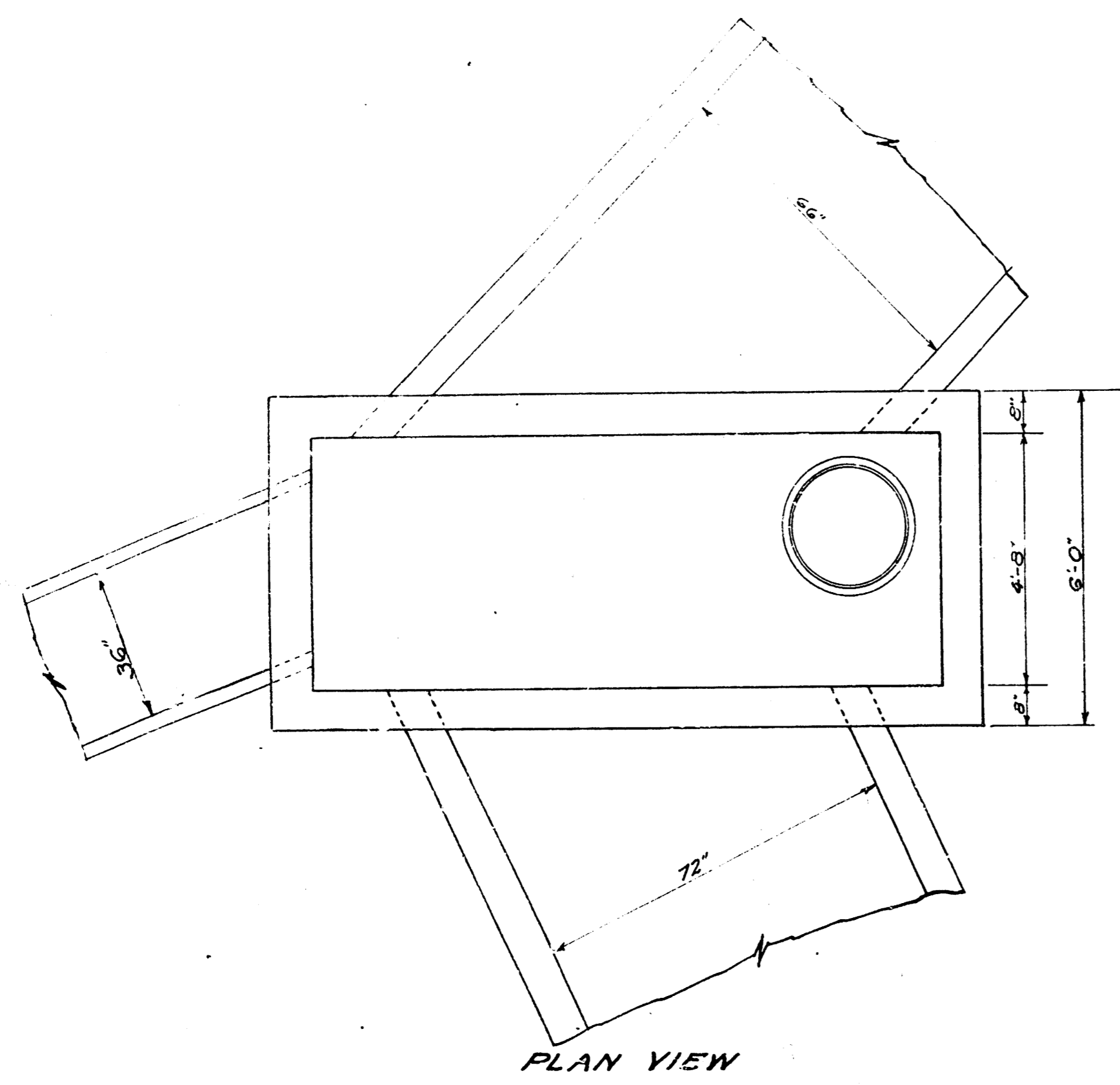
PLAN VIEW



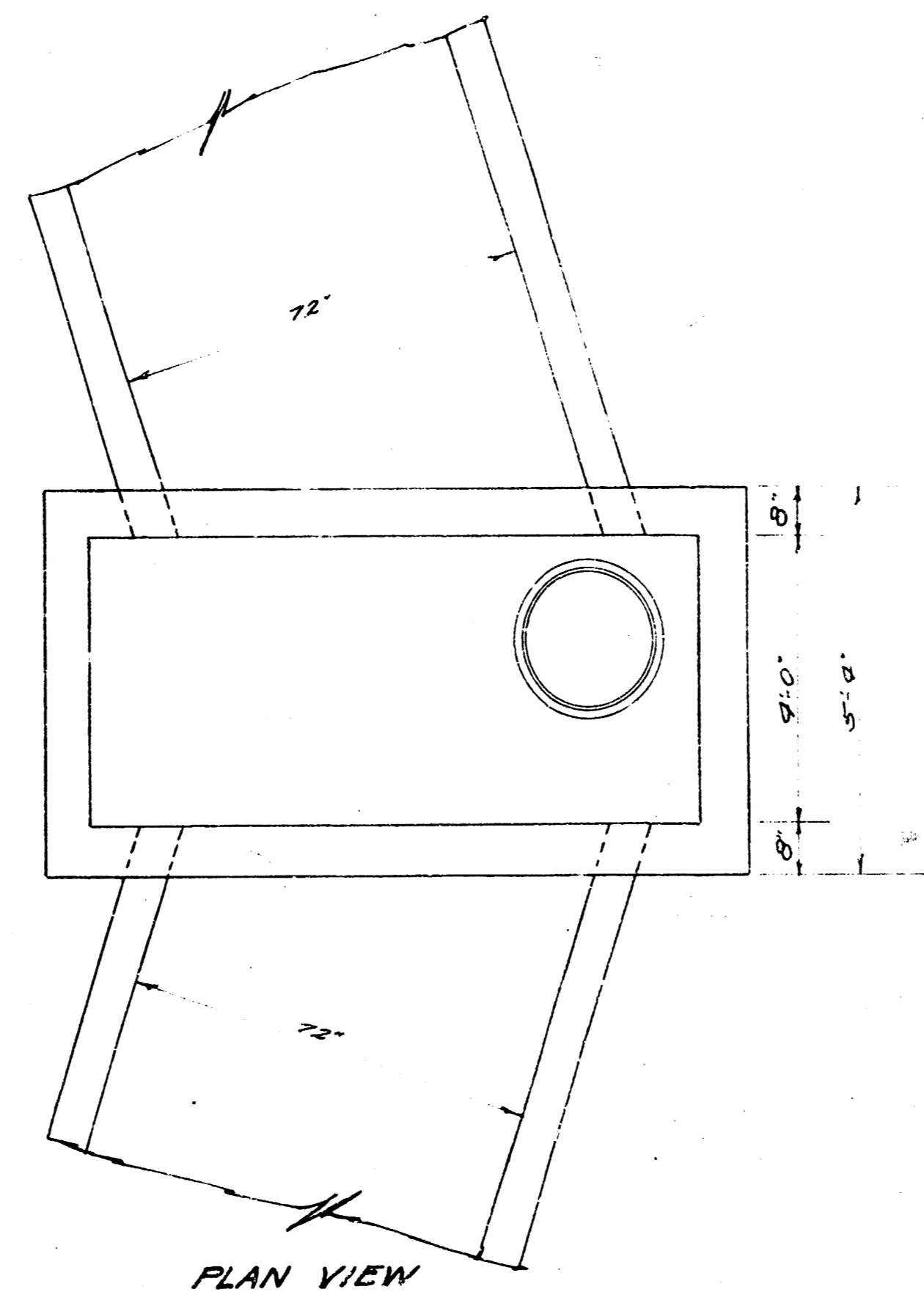
ELEVATION

STORM WATER SEWER DIST. NO. 41
CITY OF WICHITA KANSAS
L.K. WHITE CITY ENGINEER
Proj. No. C 21-52
AUG. 15, 1951

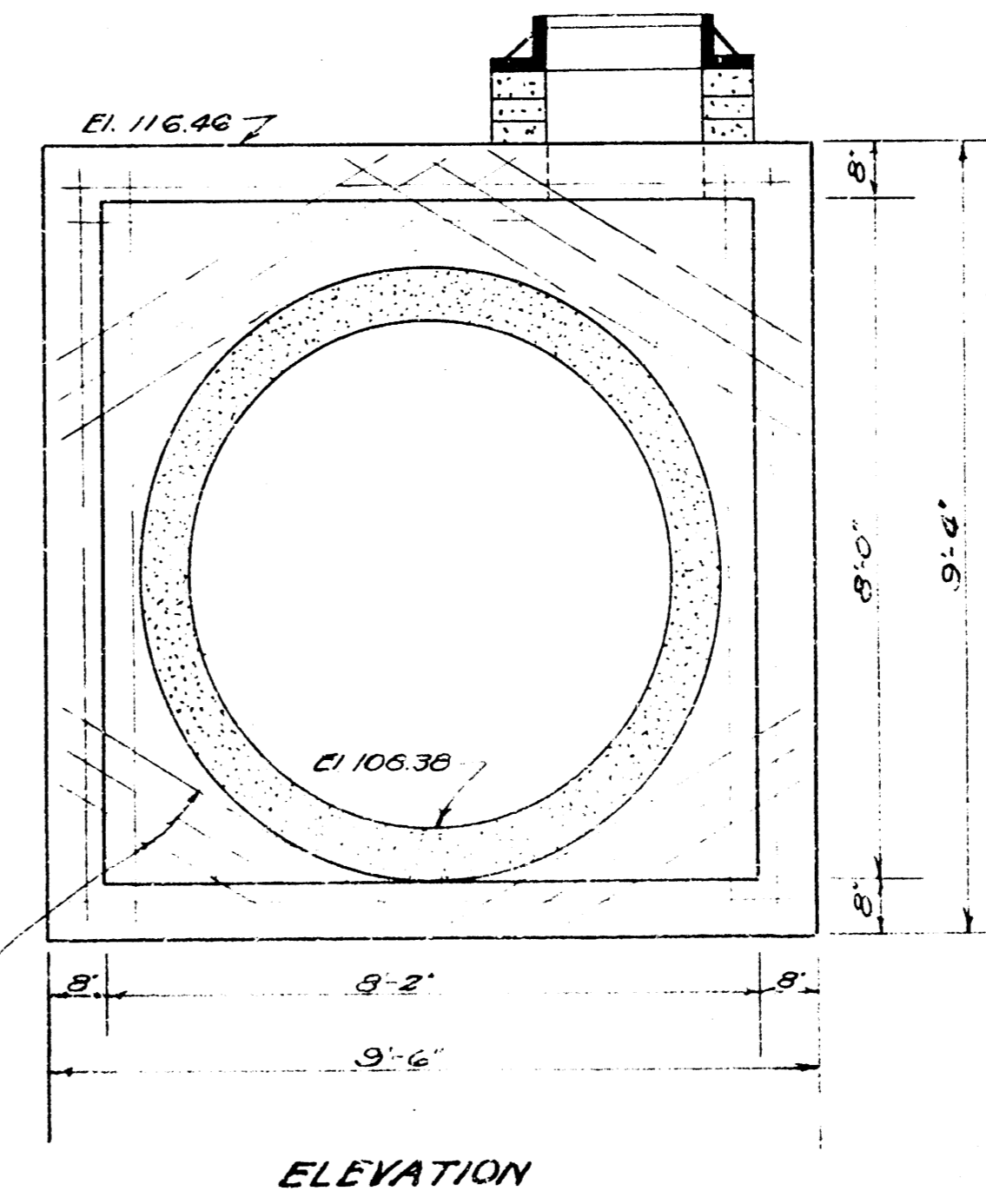
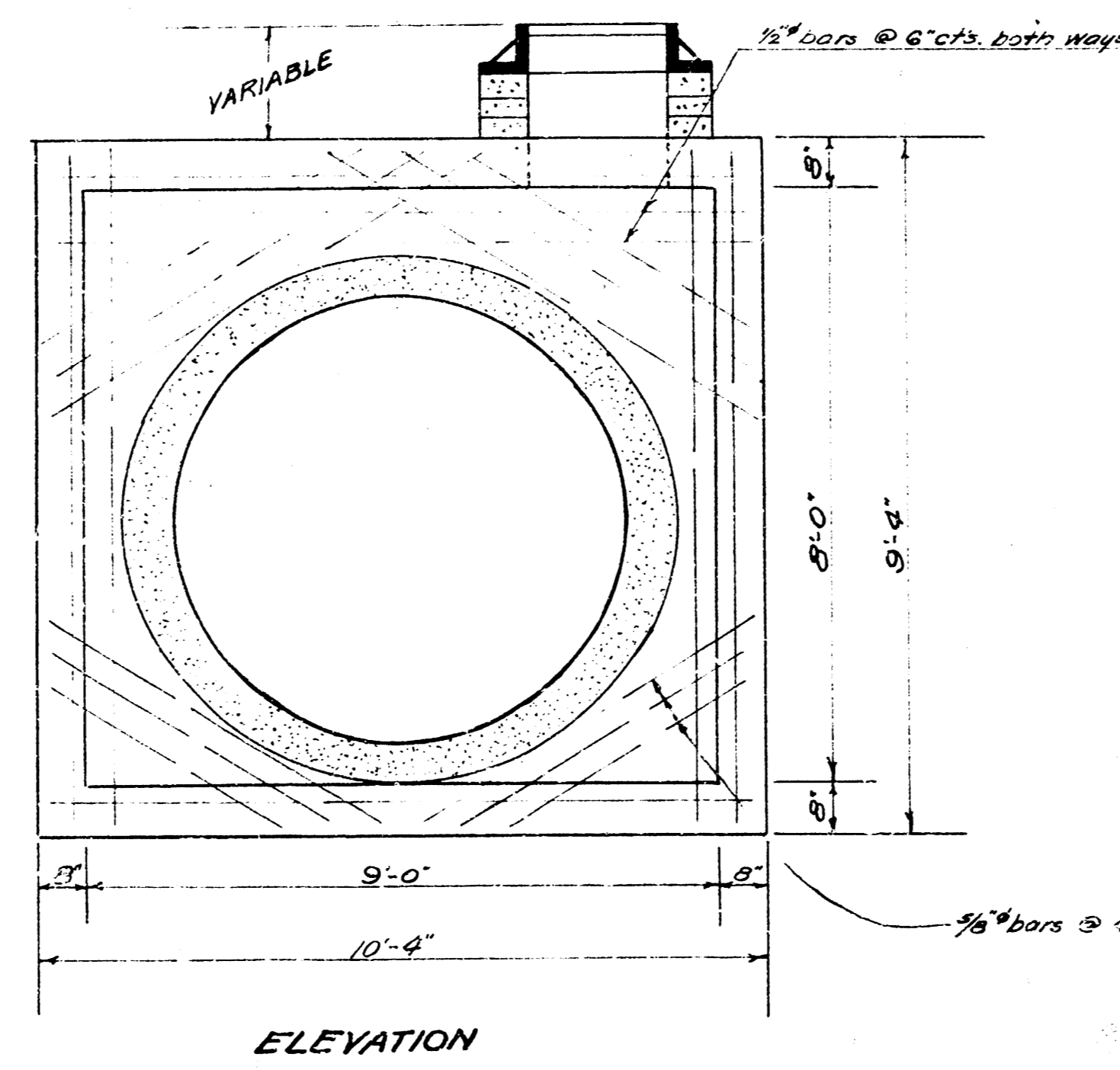
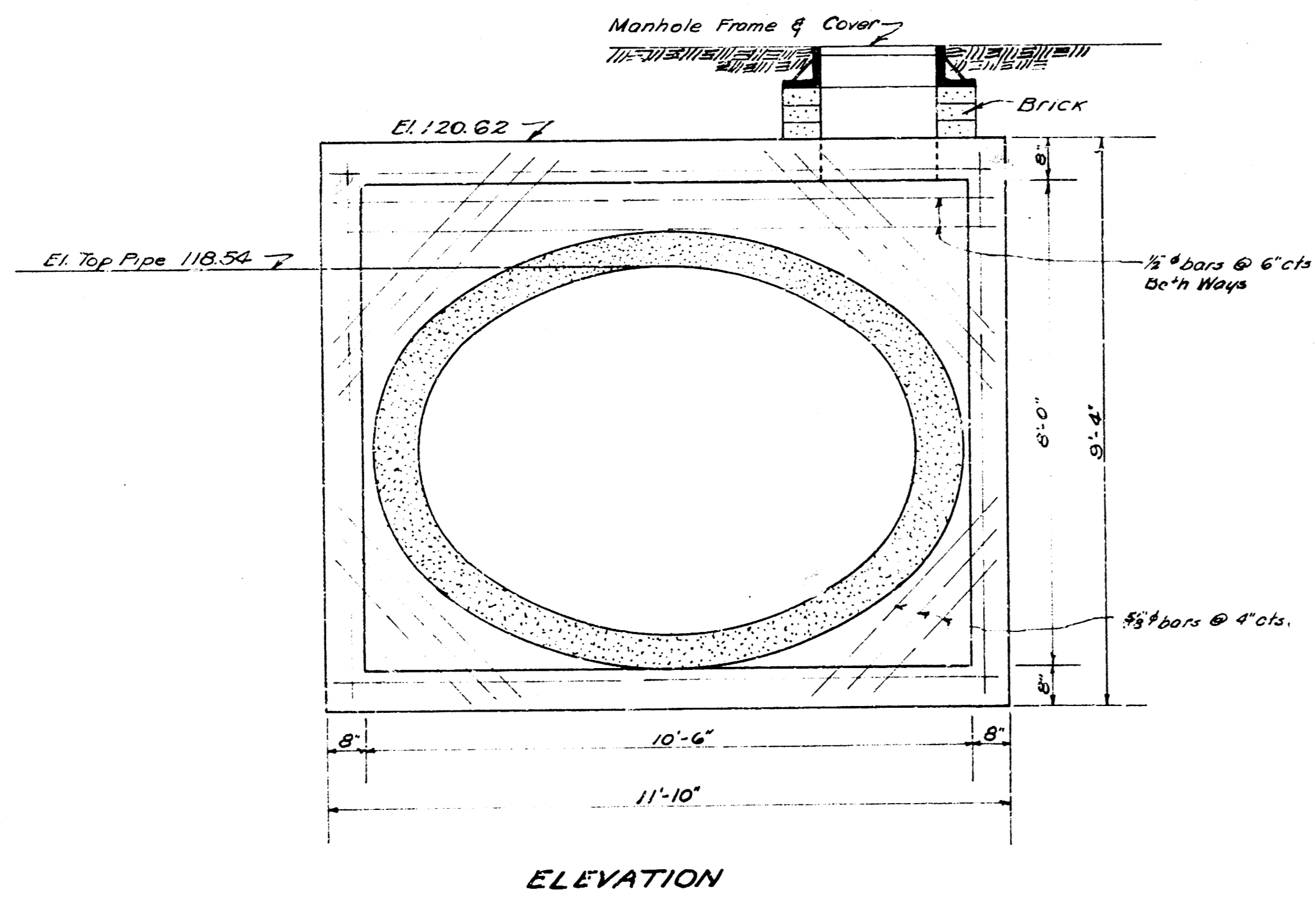
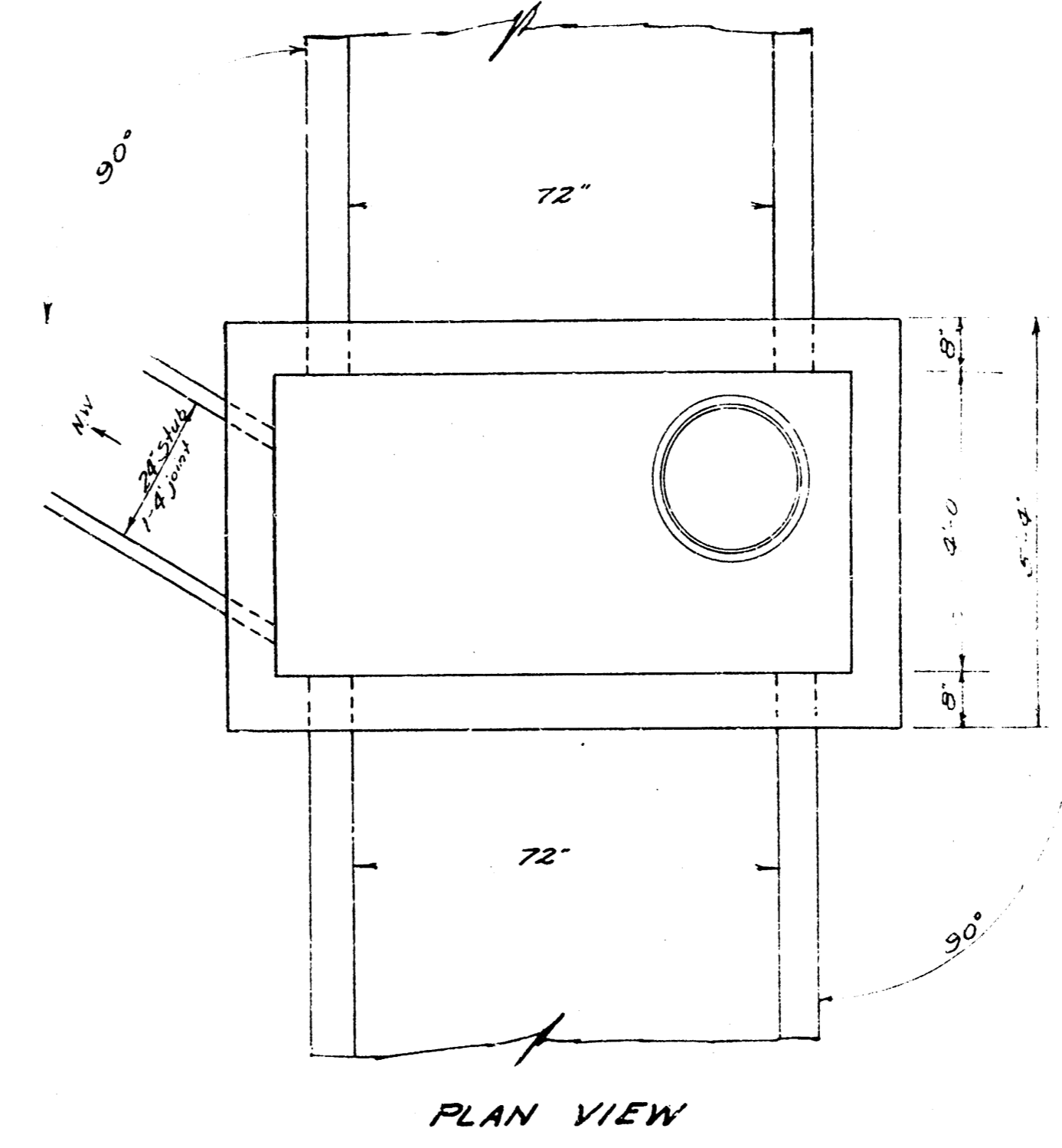
MANHOLE STA. 18+47 LINE 1
0+00 - 2



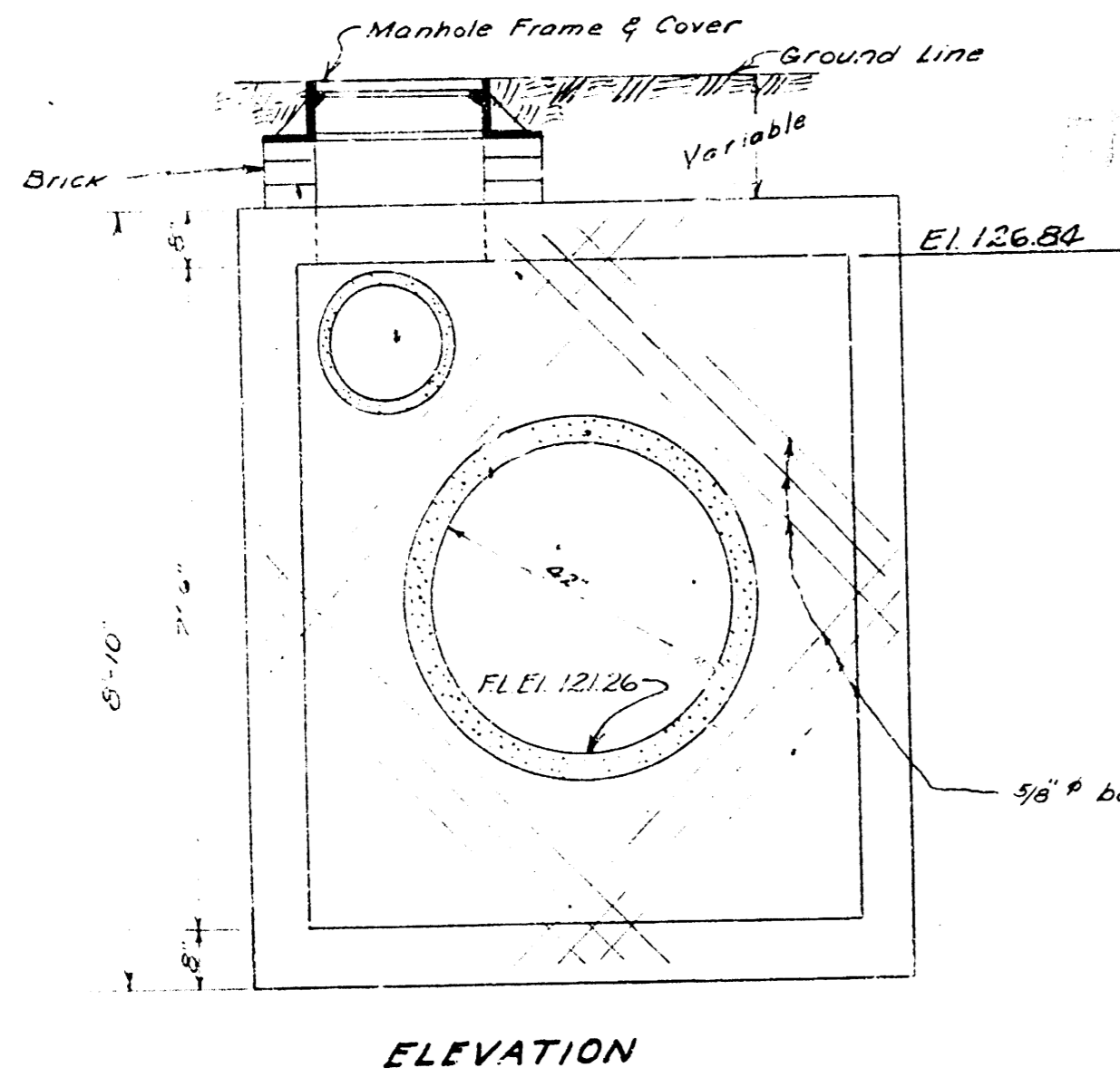
MANHOLE STA. 7+93 LINE 1
4+70 " 1



MANHOLE STA. 9+22 LINE 1

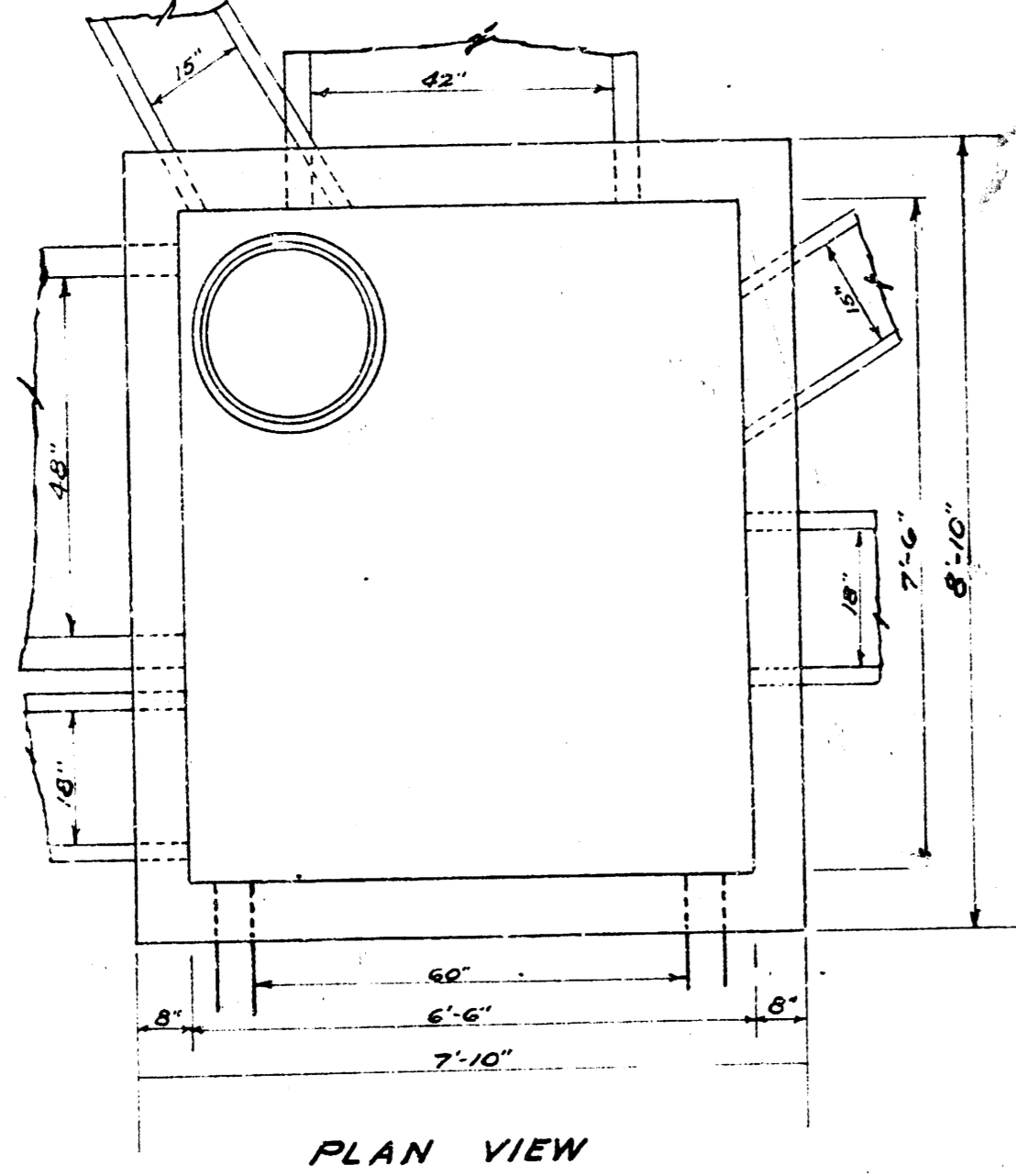


STORM WATER SEWER DIST. NO. 41
CITY OF WICHITA KANSAS
L.K. WHITE CITY ENGINEER
Proj. No. C21-54
AUG 15, 1951

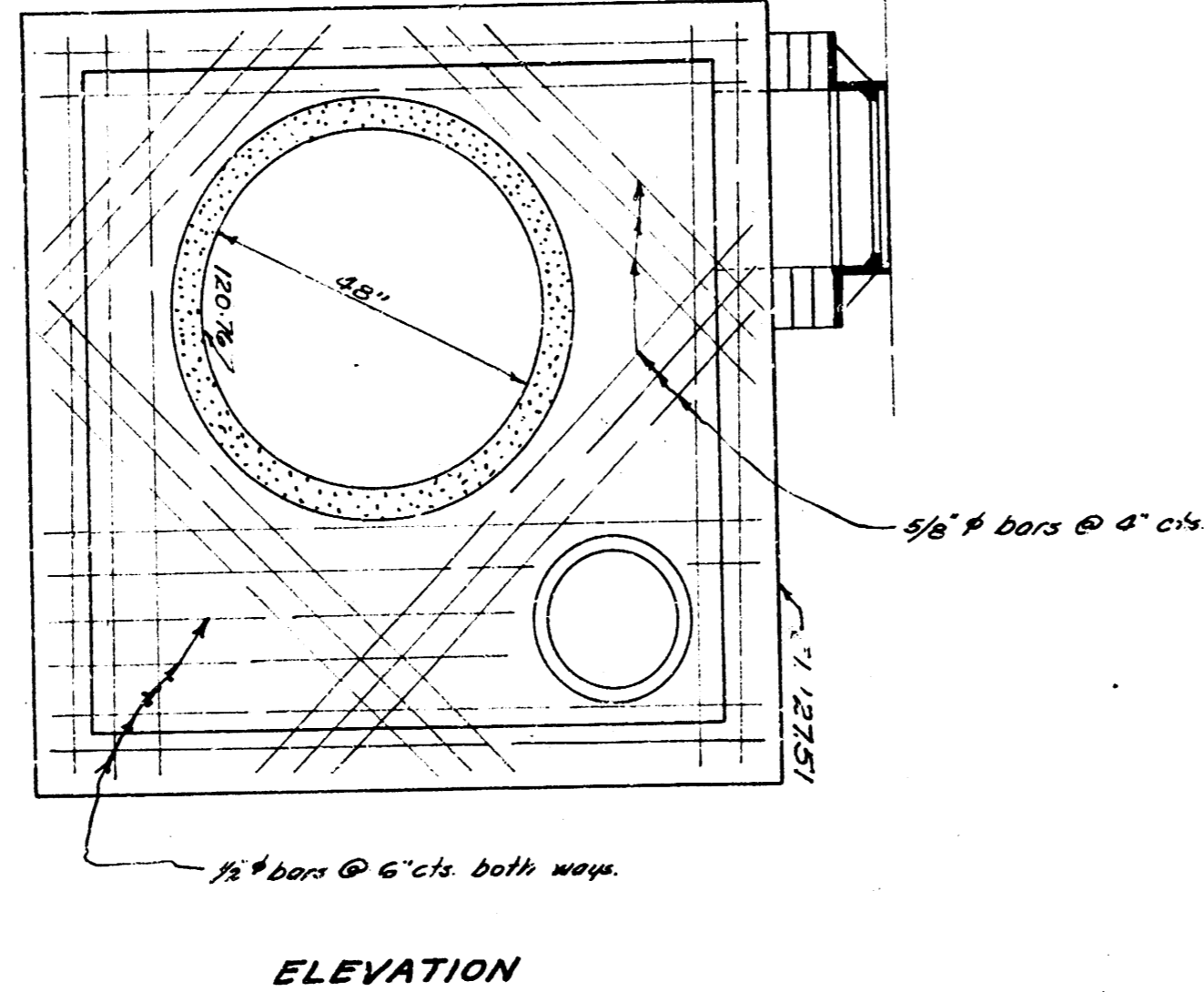


MANHOLE STA. 34+56
LINE 1 & STA. 0+00 LINE 3

ELEVATION

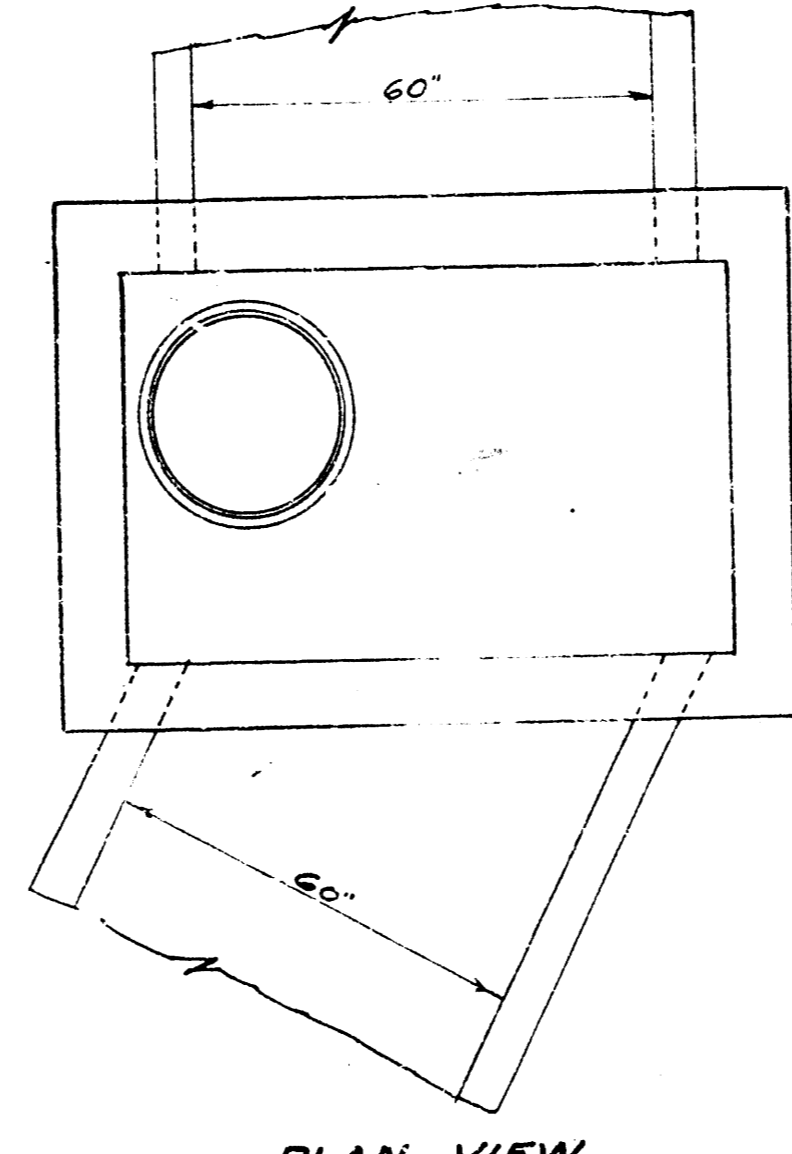


PLAN VIEW

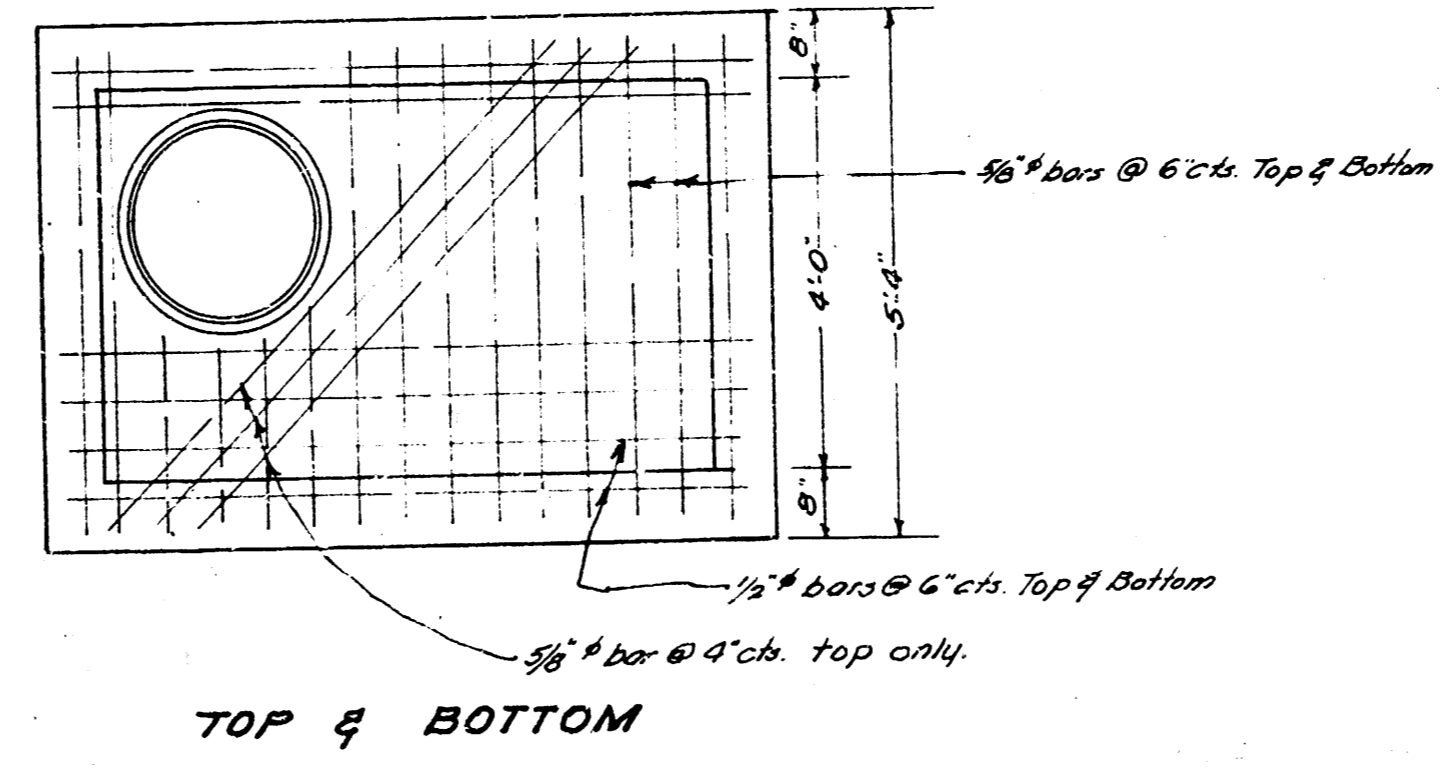


ELEVATION

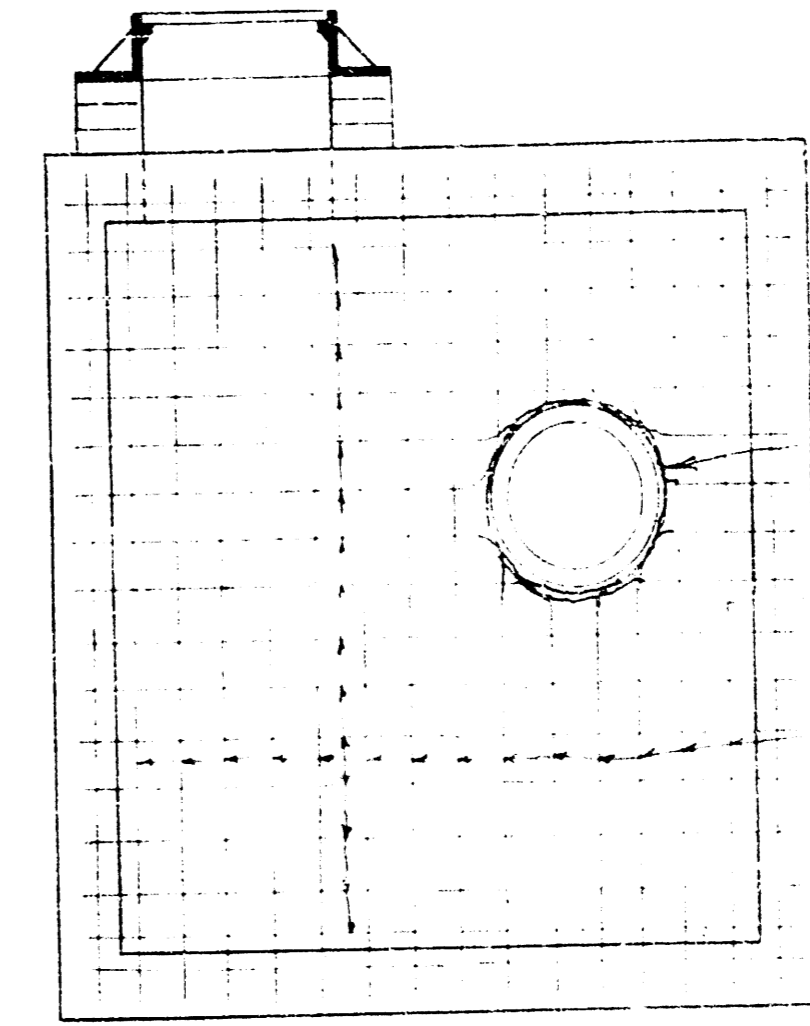
MANHOLE STA. 32+88.6 LINE 1
" " 31+33.4 " 1
" " 29+78.1 " 1



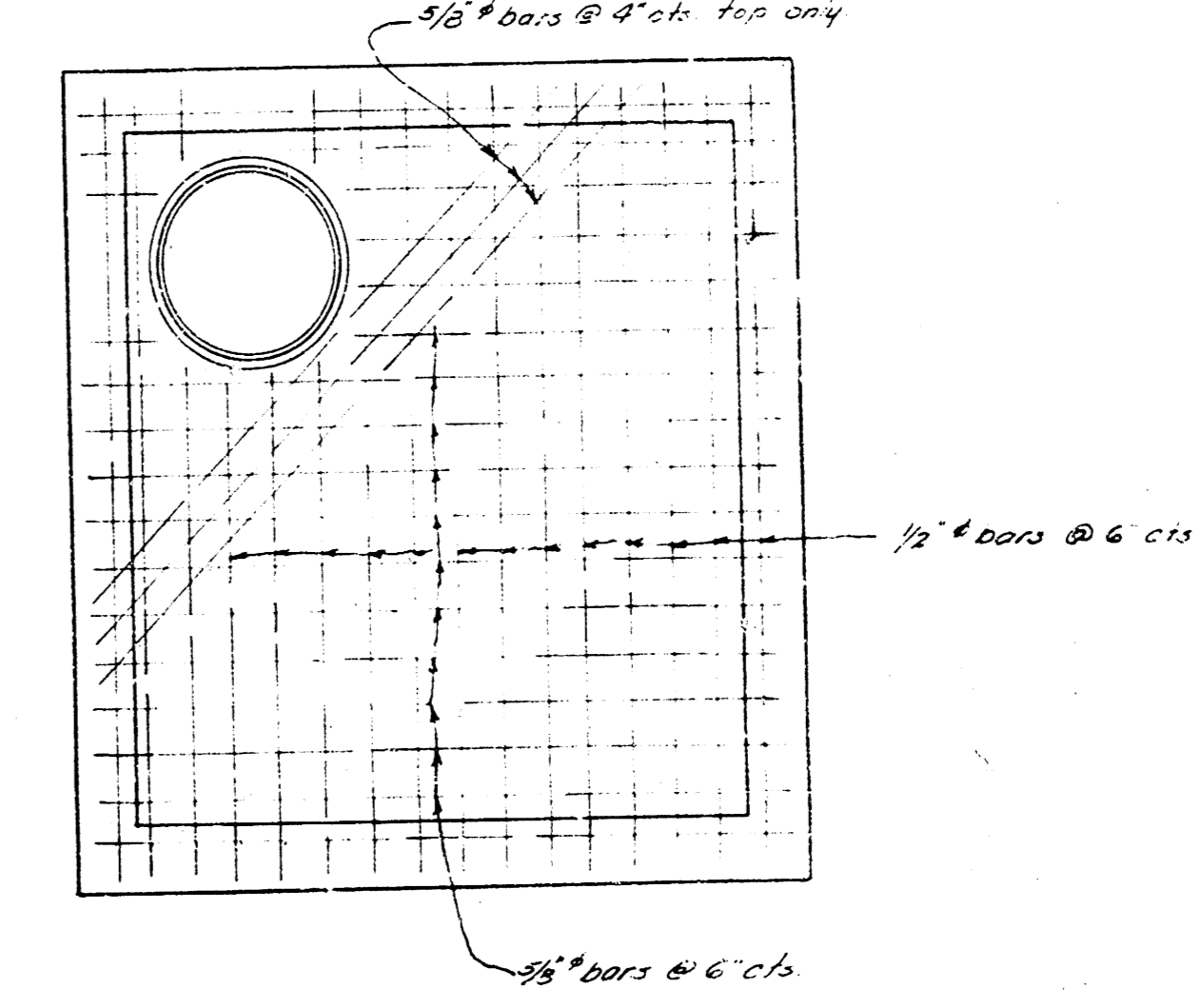
PLAN VIEW



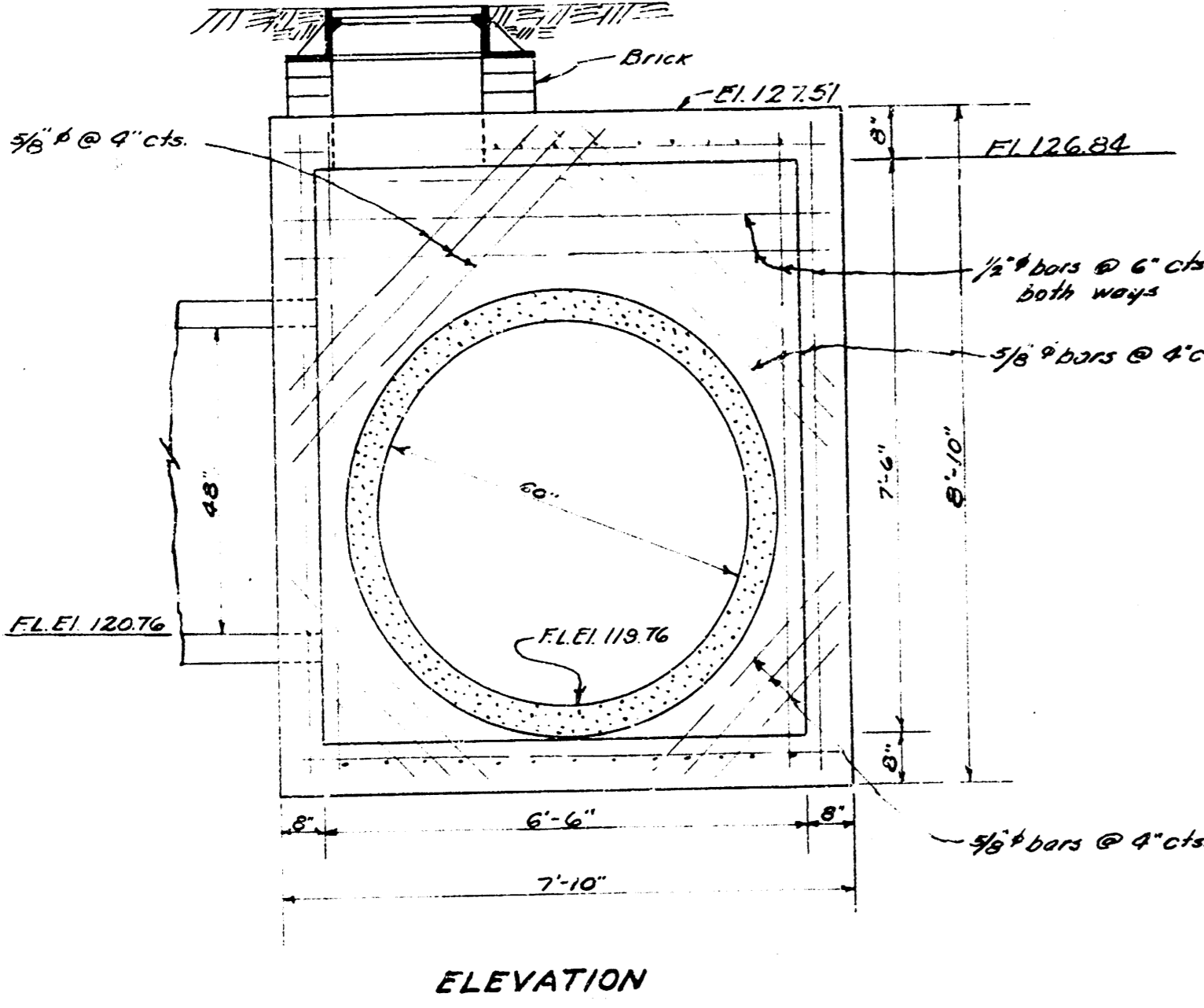
TOP & BOTTOM



TYPICAL WALL SEC.
STEEL PATTERN

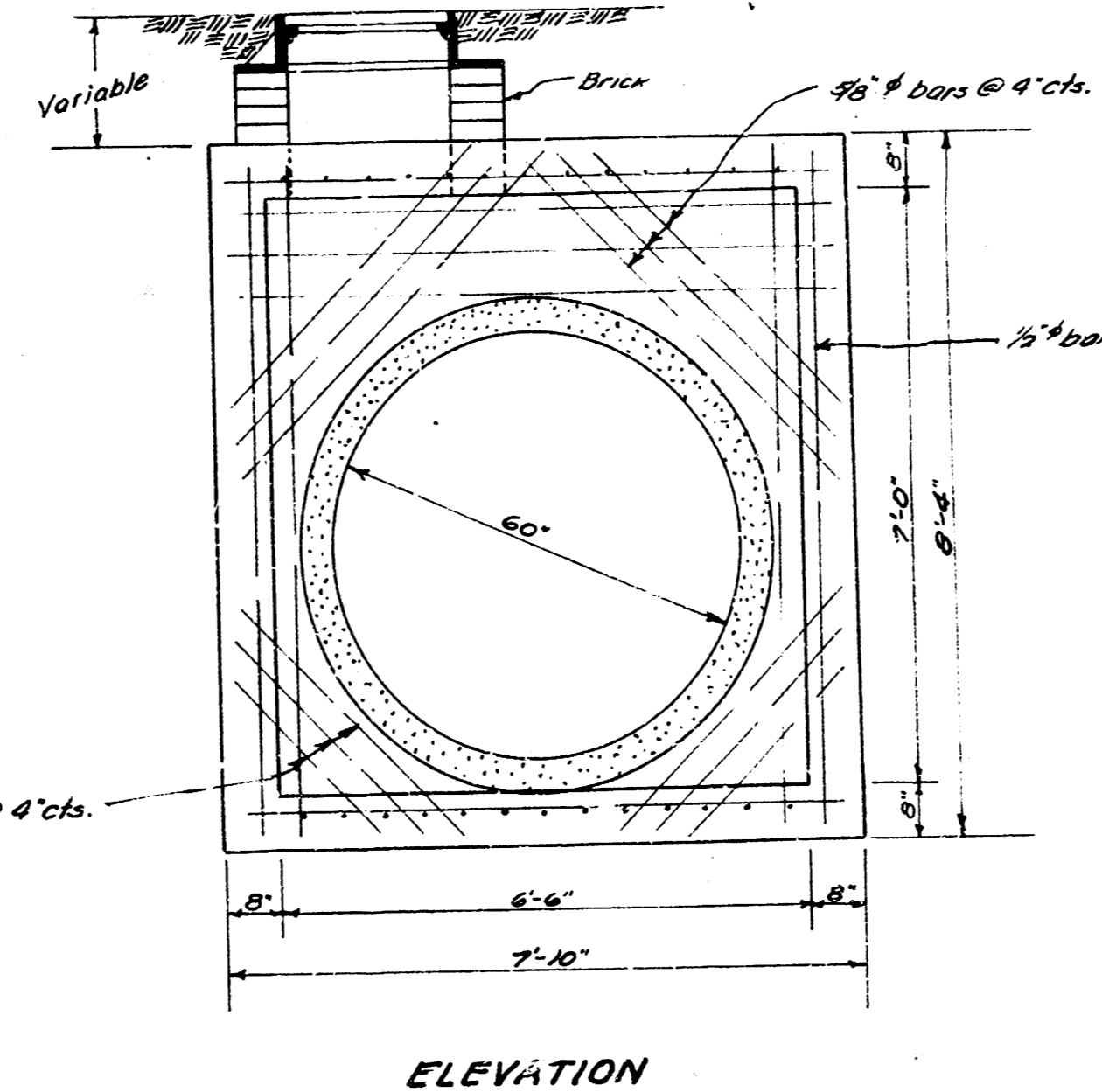


TYPICAL SEC. TOP & BOTTOM
STEEL PATTERN



ELEVATION

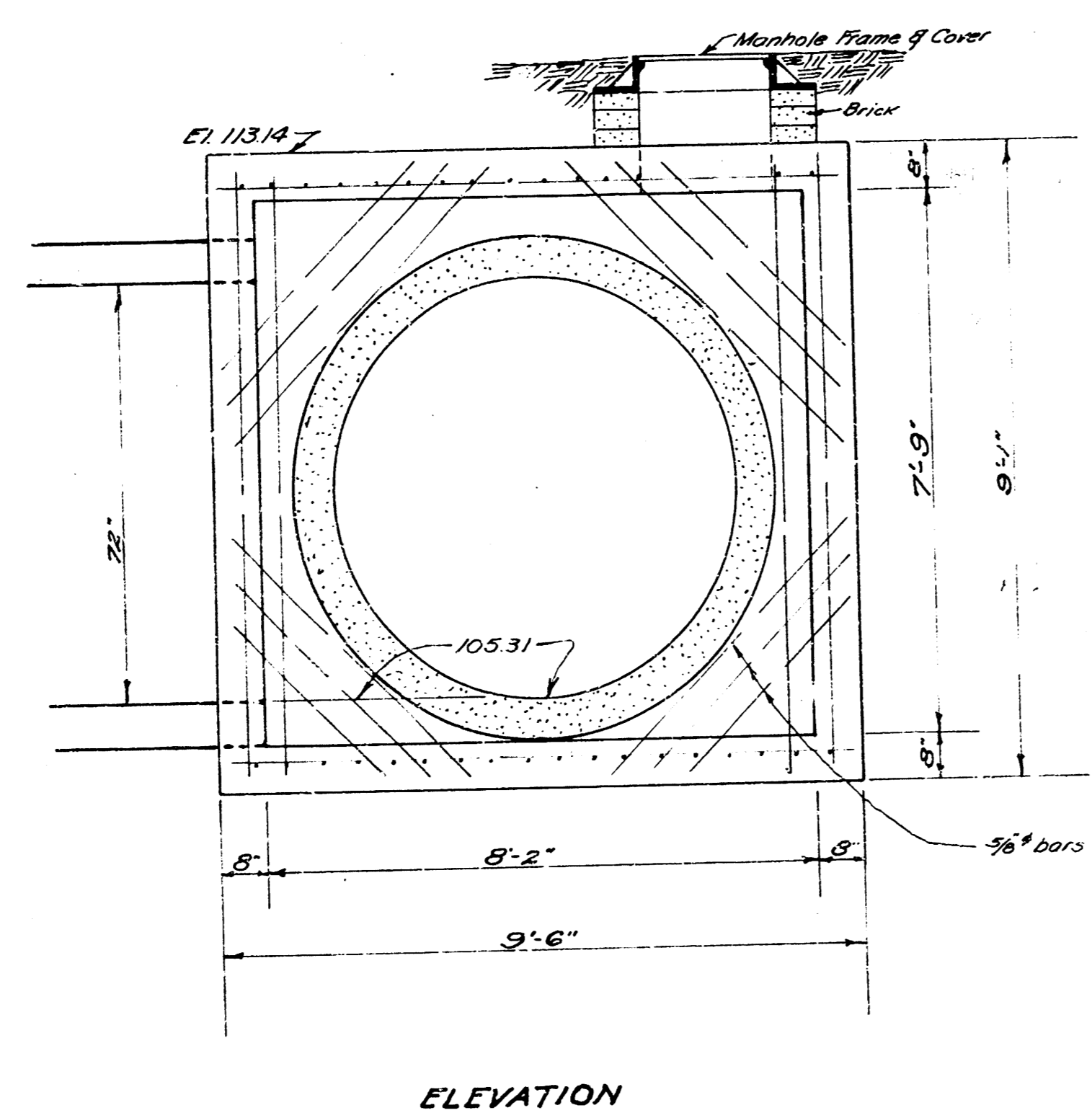
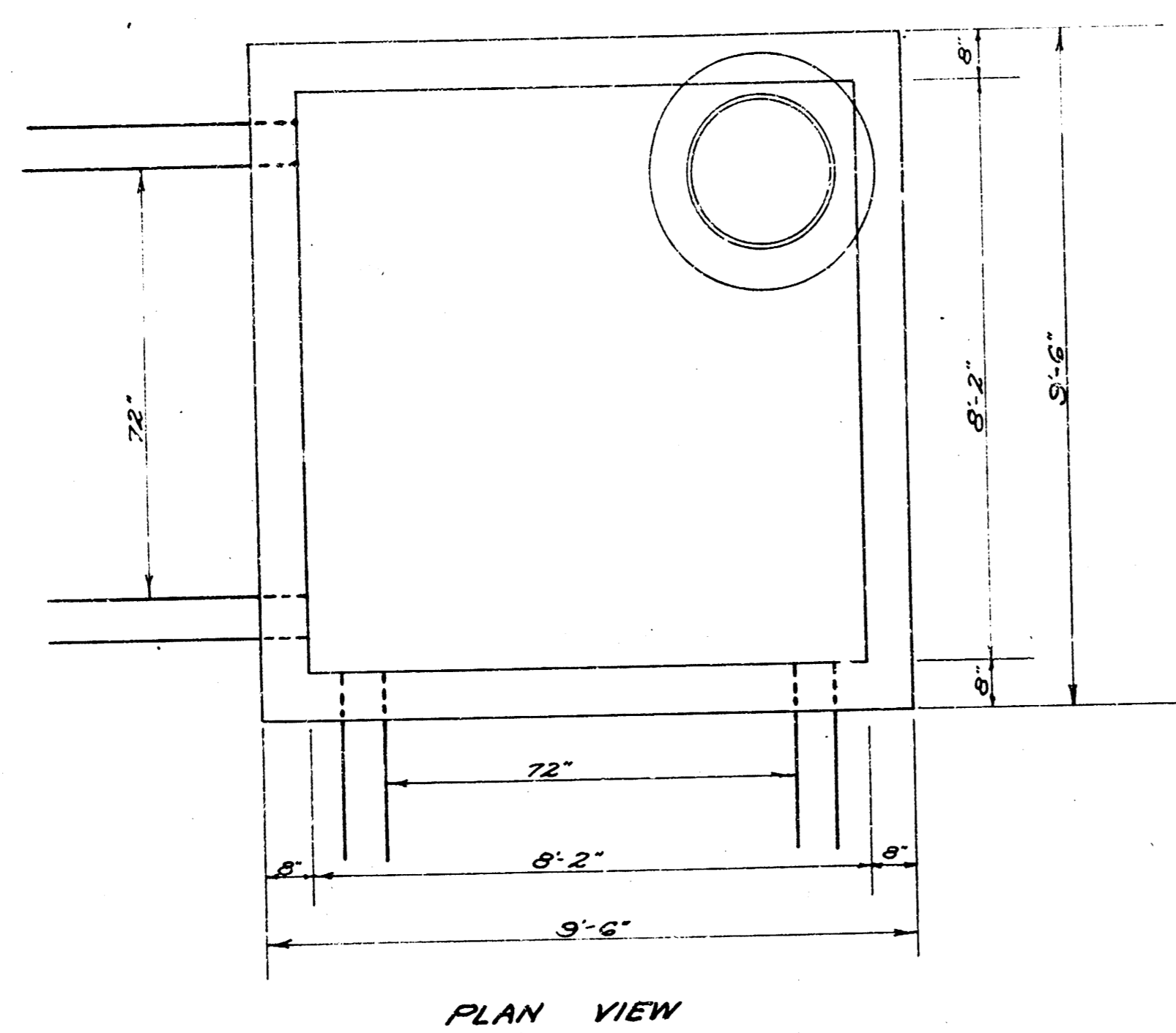
NOTE:
Concrete for manholes shall contain not less than 1.65 barrels of cement per cubic yard of concrete. In no event shall the total water content exceed 6.25 gallons per sack of cement. The mixture of fine and coarse aggregate shall be such as will produce a maximum density and the most workable mixture.
In General: Pipes will enter and leave the manhole at various angles and elevations. Where possible, bend reinforcing bars around pipes (18" diameter or less). Where pipes are large, use 5/8" diagonal bars as shown.
The floor of the manhole is to be sloped for flow and drainage with concrete. No deductions in concrete quantities shall be made for pipe openings. No additions in concrete quantities shall be made for sloping manhole floor. An internal vibrator is to be used for placing concrete.



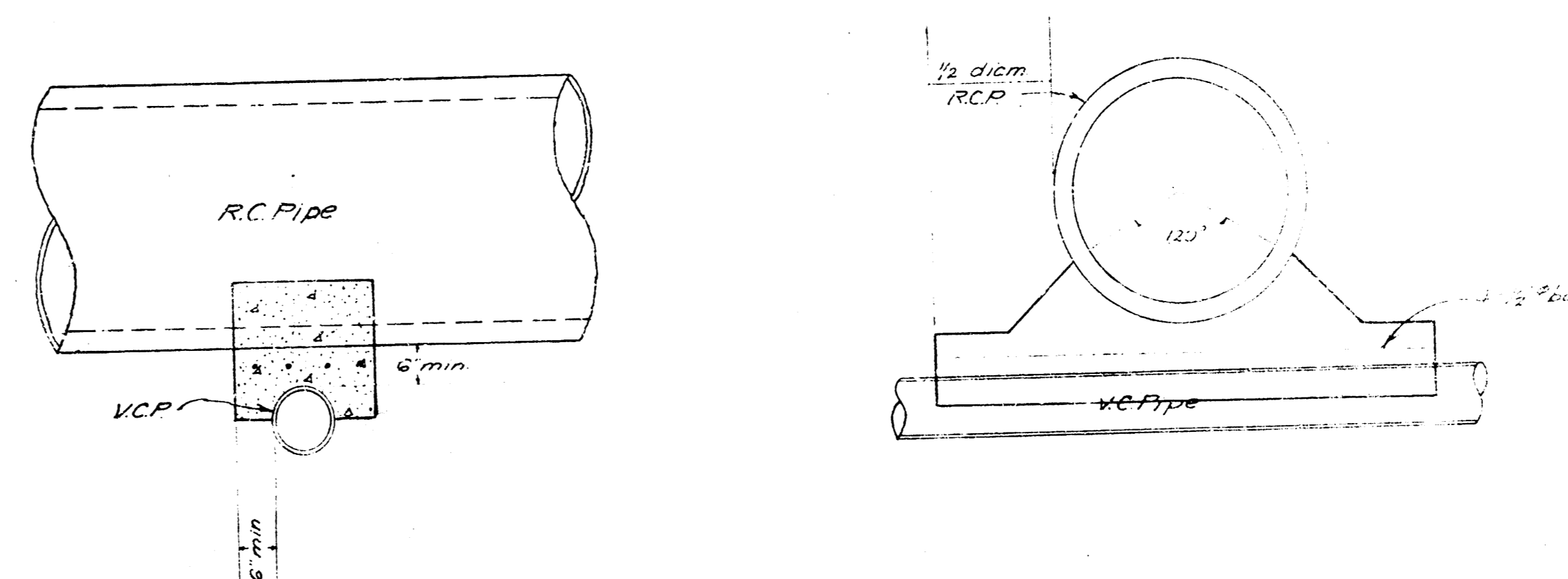
ELEVATION

STORM WATER SEWER DIST. NO. 41
CITY OF WICHITA KANSAS
L.K. WHITE, CITY ENGINEER
Proj. No. C-21-54
AUG. 15, 1951

MANHOLE STA. 2+40 LINE 1



CONCRETE ENCASEMENT DETAIL
No Scale



Concrete encasement of V.C. Pipe at all points where R.C. Pipe crosses, as required by the Field engineer.

STORM WATER SEWER DIST. NO. 41
CITY OF WICHITA KANSAS
L.K. WHITE CITY ENGINEER
Proj. No. C21-54
AUG 15, 1951