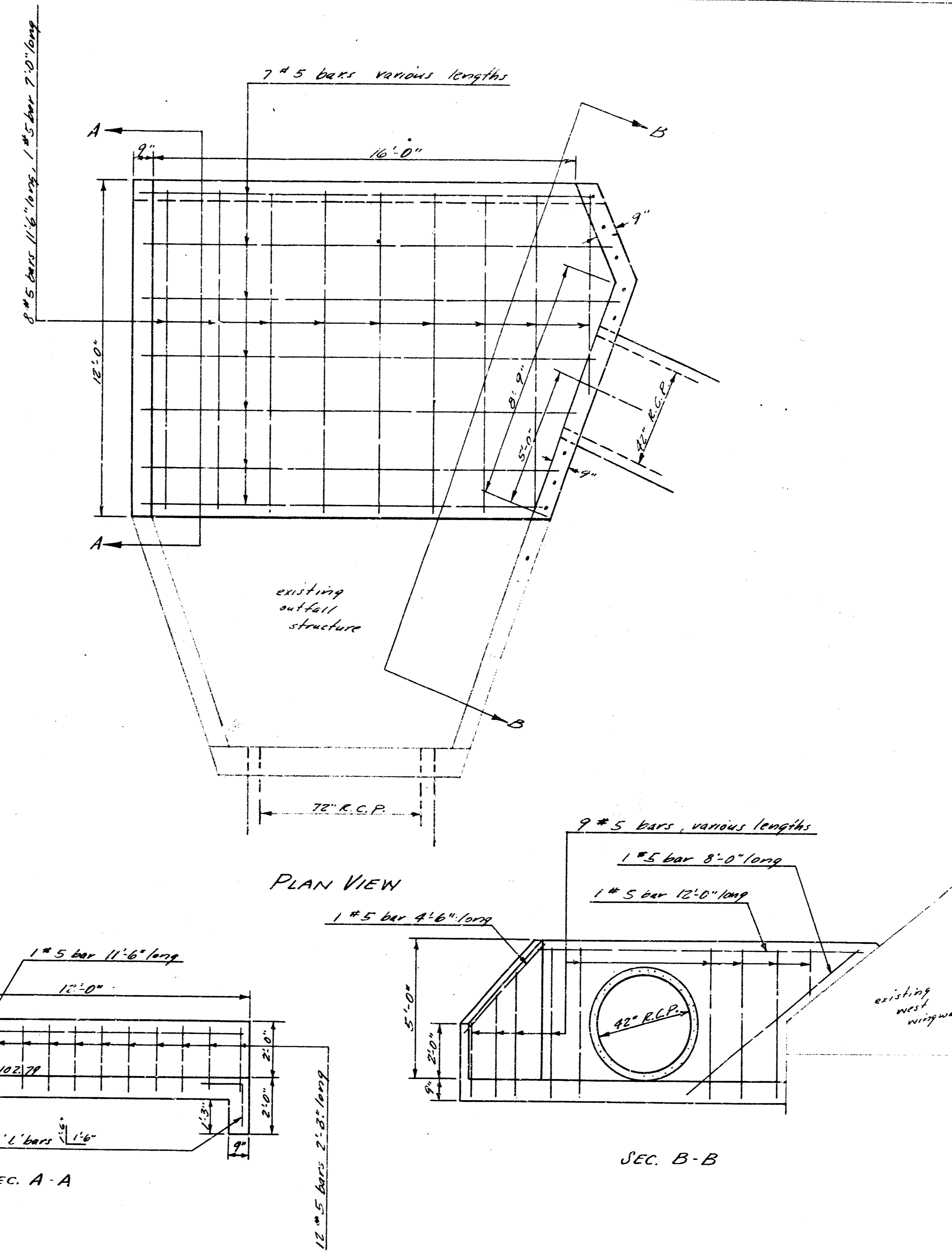


REINF. CONC. MANHOLE - STA. 4+75.6
Scale: 3/8" = 1'-0"

Cost of removing existing manhole & connecting existing pipes to new manhole is to be included in bid price of reinf. conc. manhole.



REINF. CONC. OUTFALL STRUCTURE - STA. 0+00
Scale: 3/8" = 1'-0"

Concrete for structures is to be 6 sack C₁ paving mix. Rip-rap is to be placed 2' wide (minimum) adjacent to wing walls of the wall. Cost of rip-rap is to be included in bid price of outfall structure.