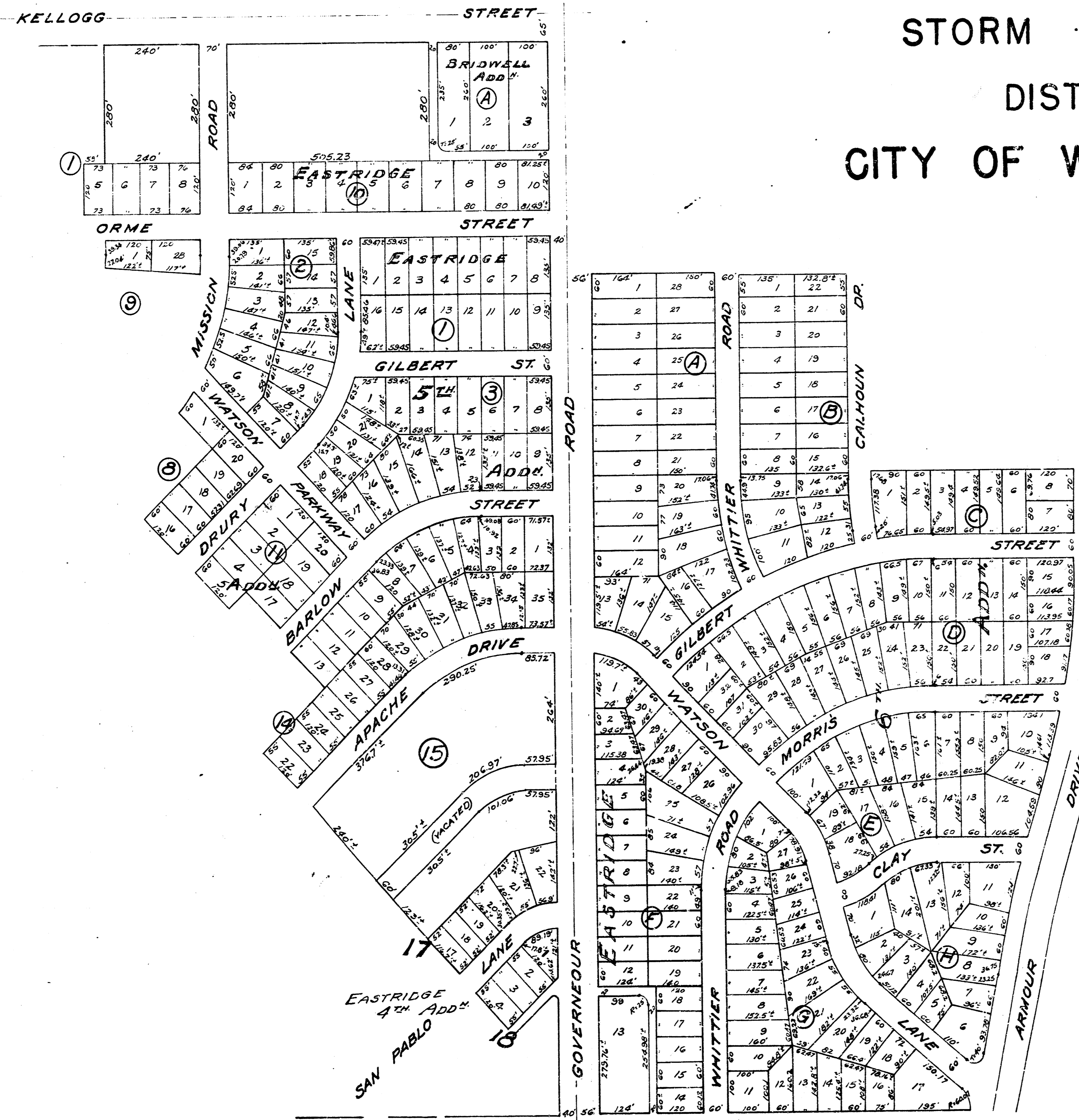


BENEFIT DISTRICT
STORM WATER SEWER
DISTRICT NO. 44
CITY OF WICHITA KANSAS

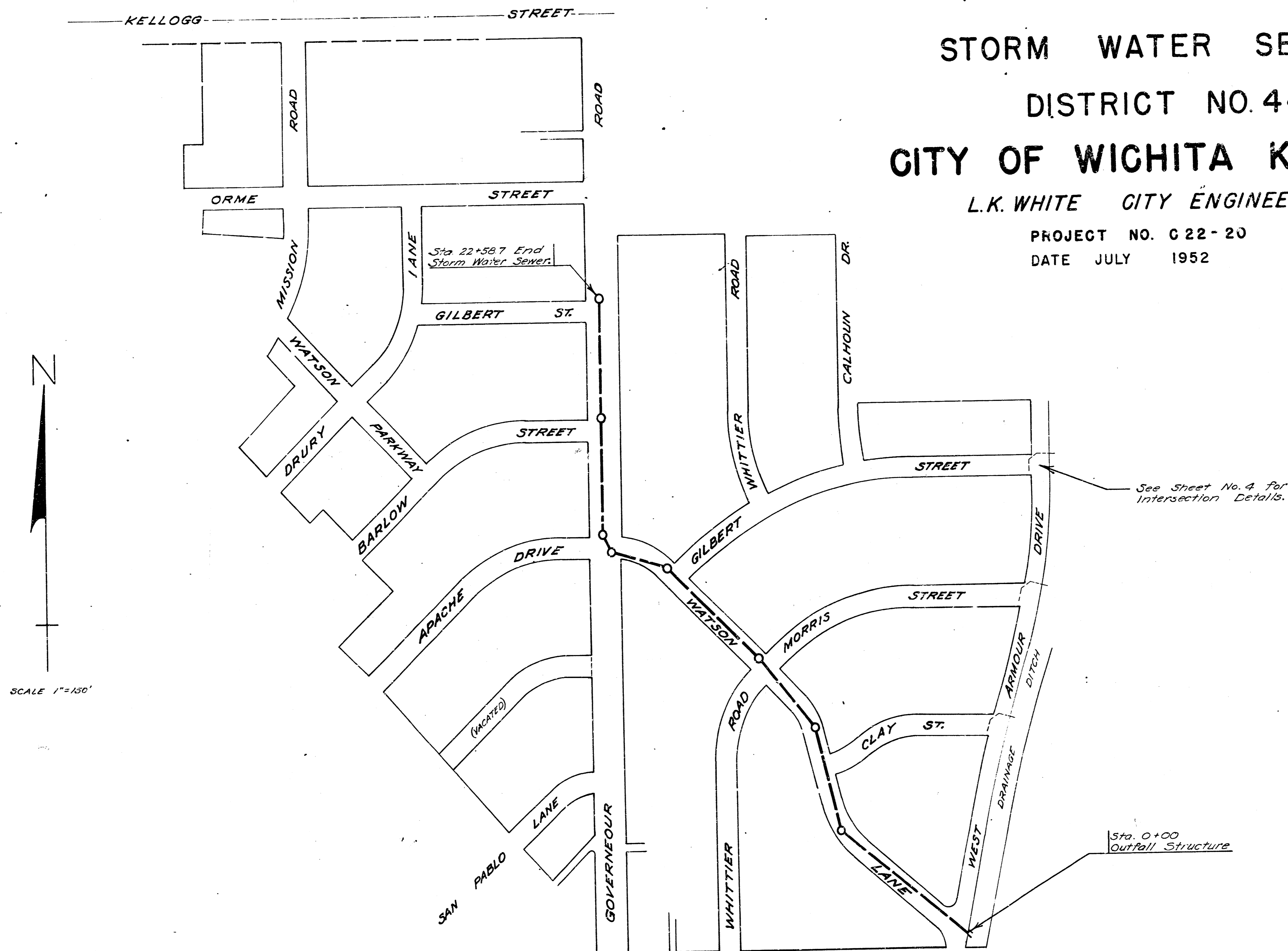
PROJECT NO. C 22-20

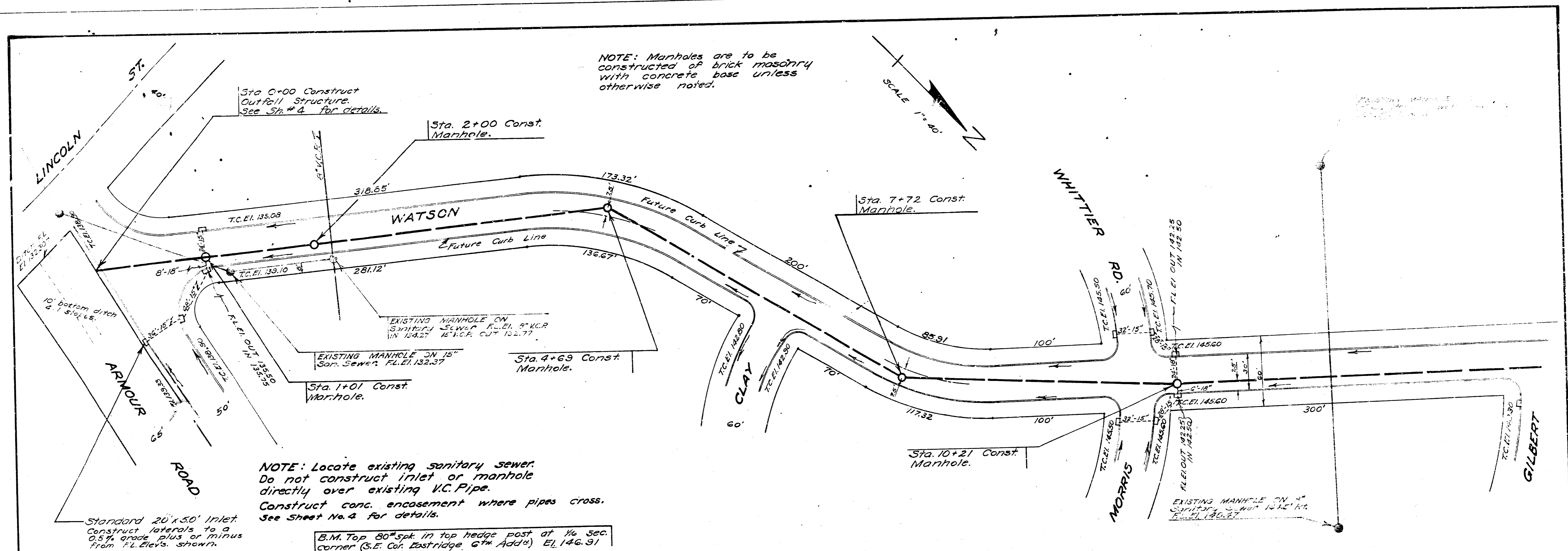


STORM WATER SEWER
DISTRICT NO. 44
CITY OF WICHITA KANSAS

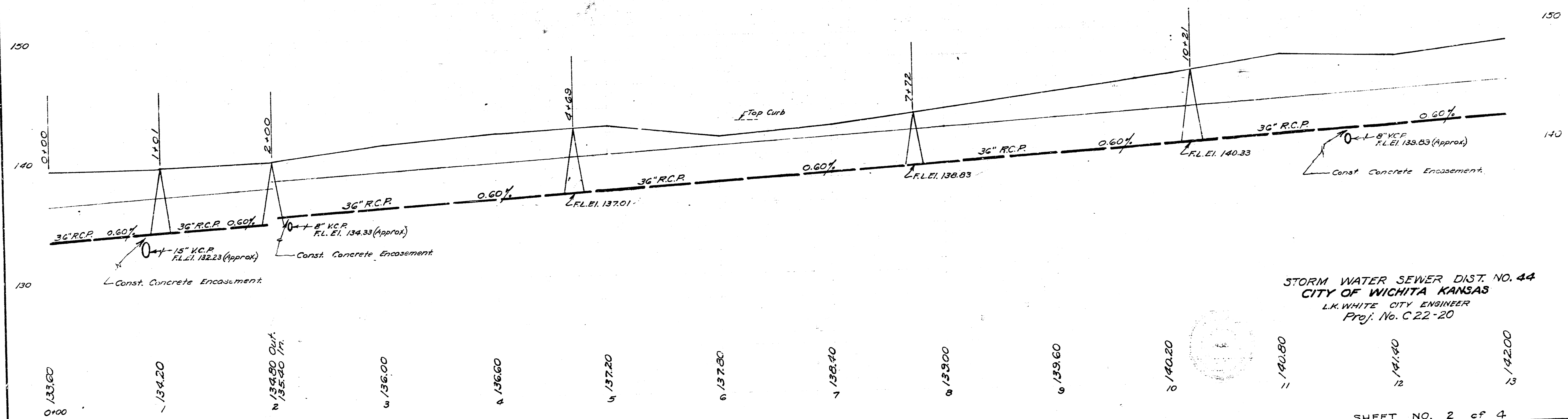
L.K. WHITE CITY ENGINEER

PROJECT NO. C 22-20
DATE JULY 1952





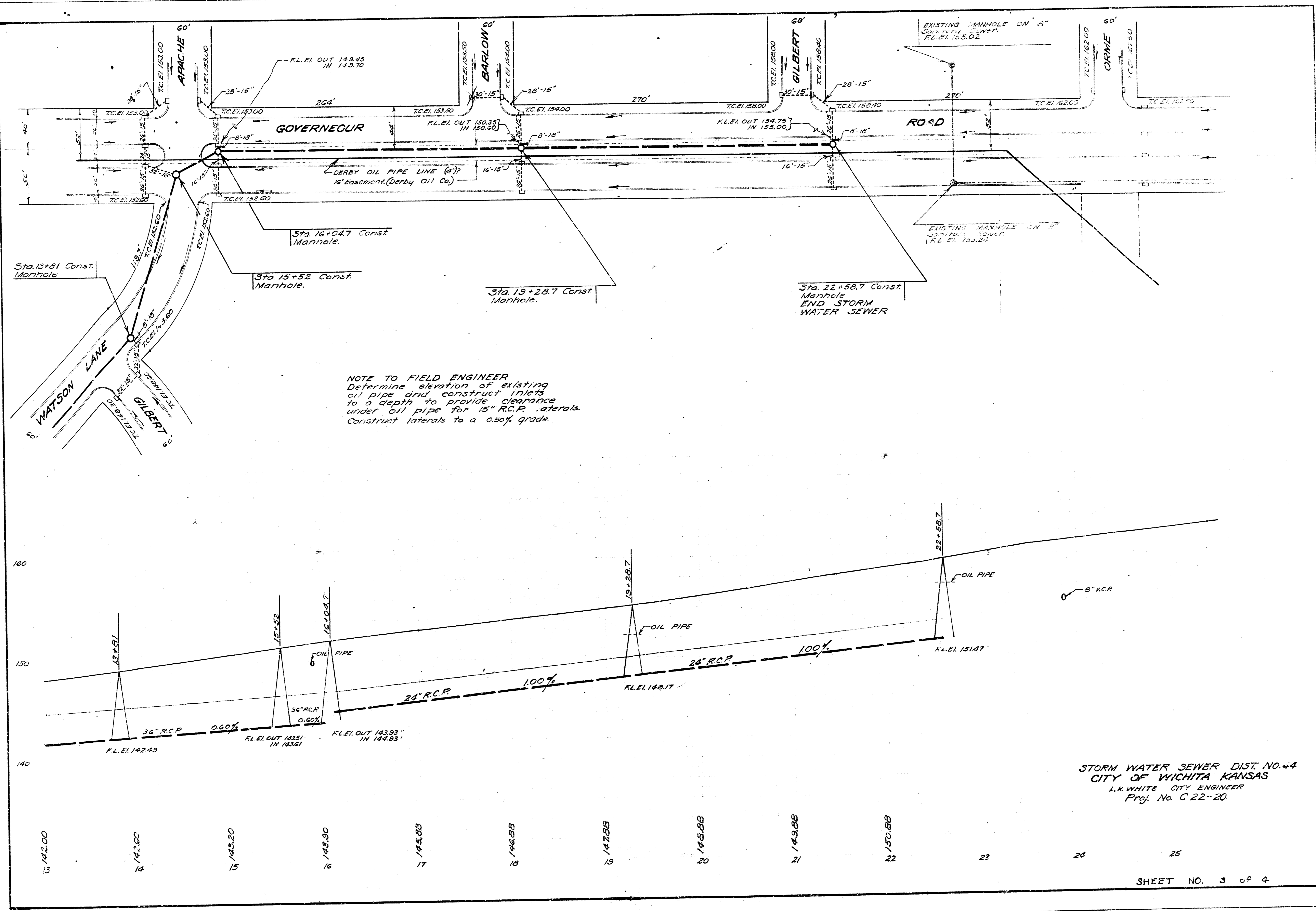
SAND BACKFILL TRENCH
 STA. 0+00 TO STA. 16+00 AND
 CROSS STREET LATERAL TRENCHES.



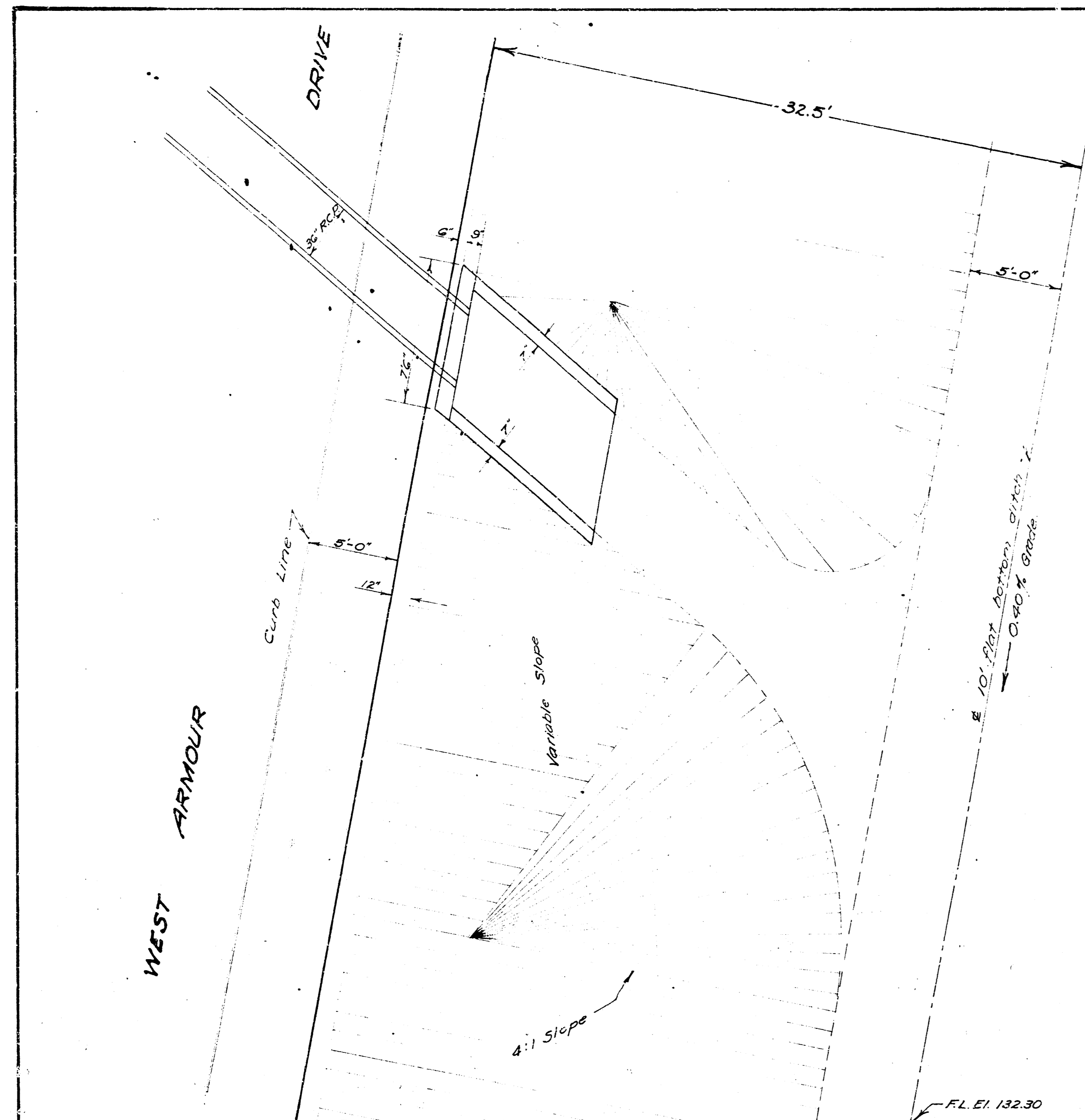
STORM WATER SEWER DIST. NO. 44
 CITY OF WICHITA KANSAS
 L.K. WHITE CITY ENGINEER
 Proj. No. C.22-20

Date July 1952
 Drawn by J.L.A.
 Checked by
 Note Book No. Me. 8

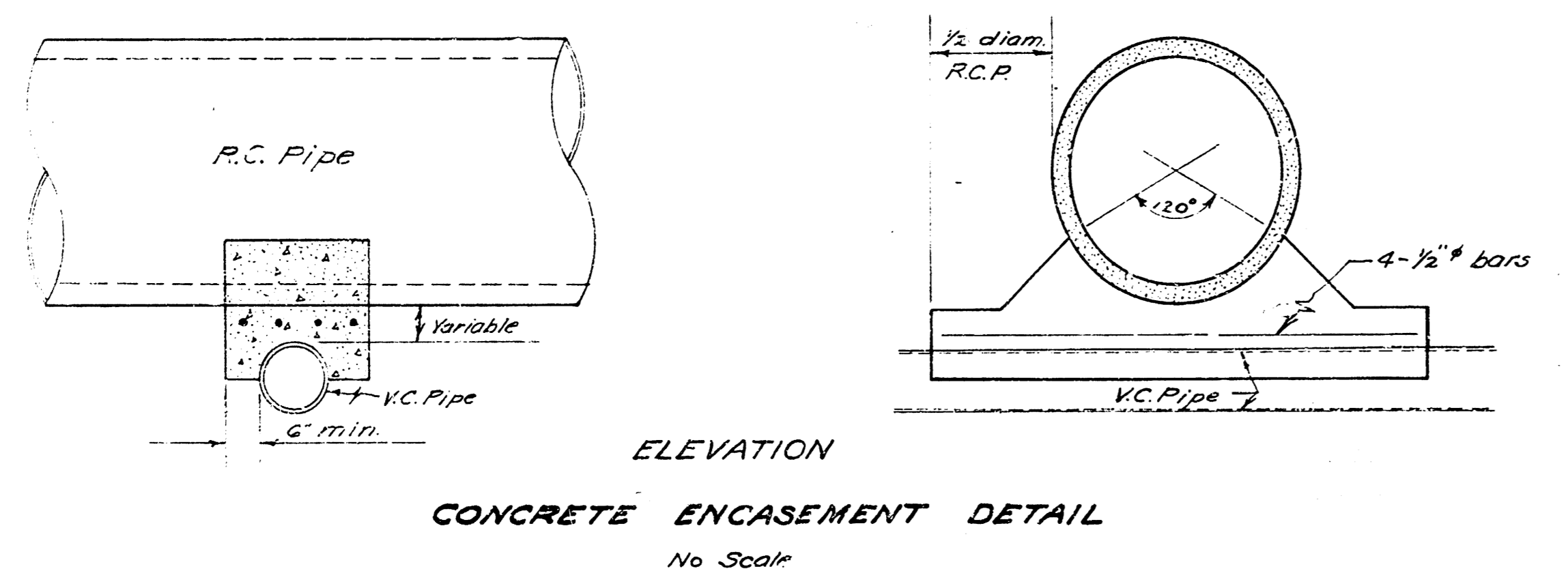
Date July 1952
 Drawn by J.L.A.
 Checked by Note Book No. M 11, 1468



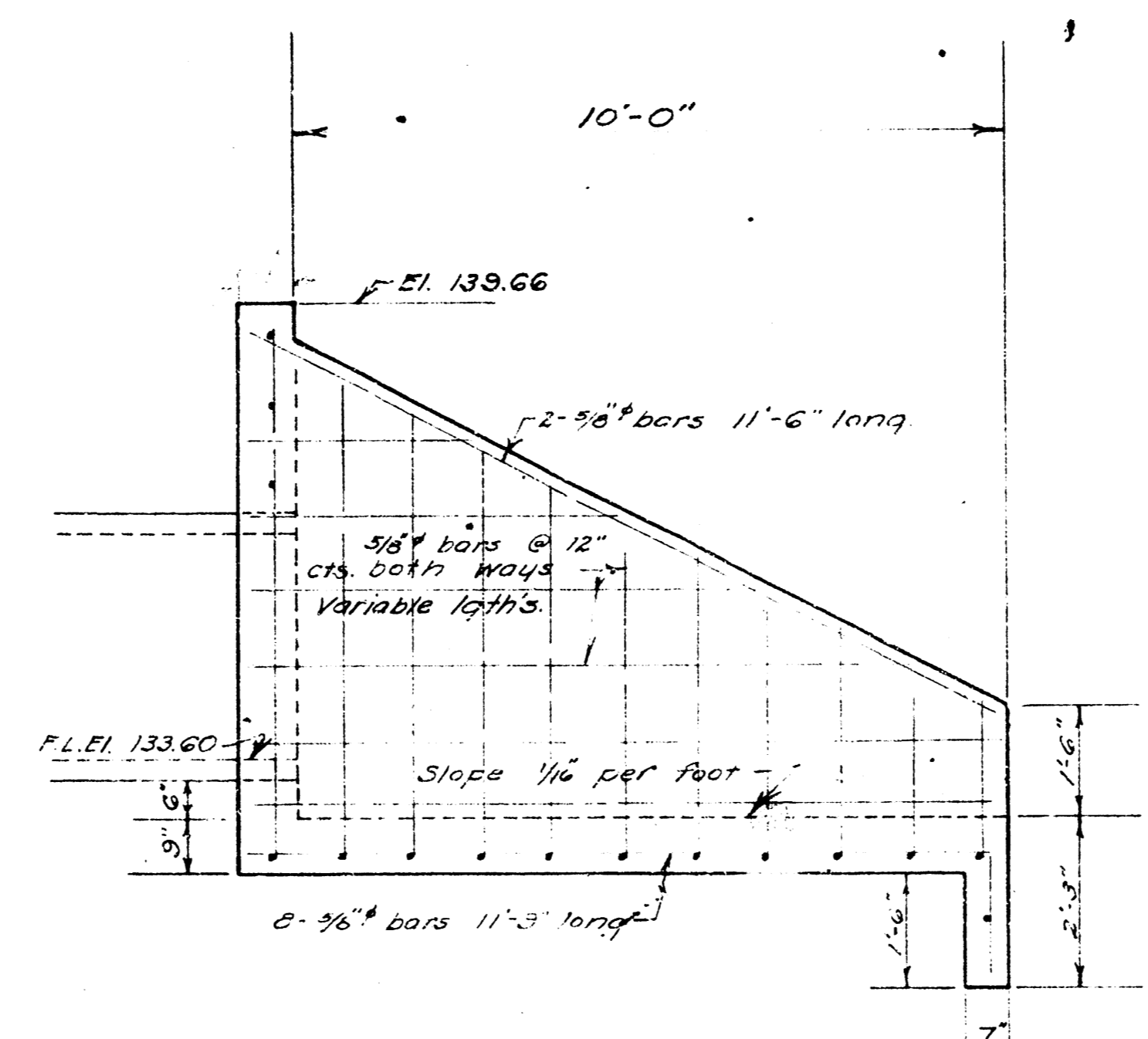
STORM WATER SEWER DIST. NO. 4
 CITY OF WICHITA KANSAS
 L.K. WHITE CITY ENGINEER
 Proj. No. C 22-20



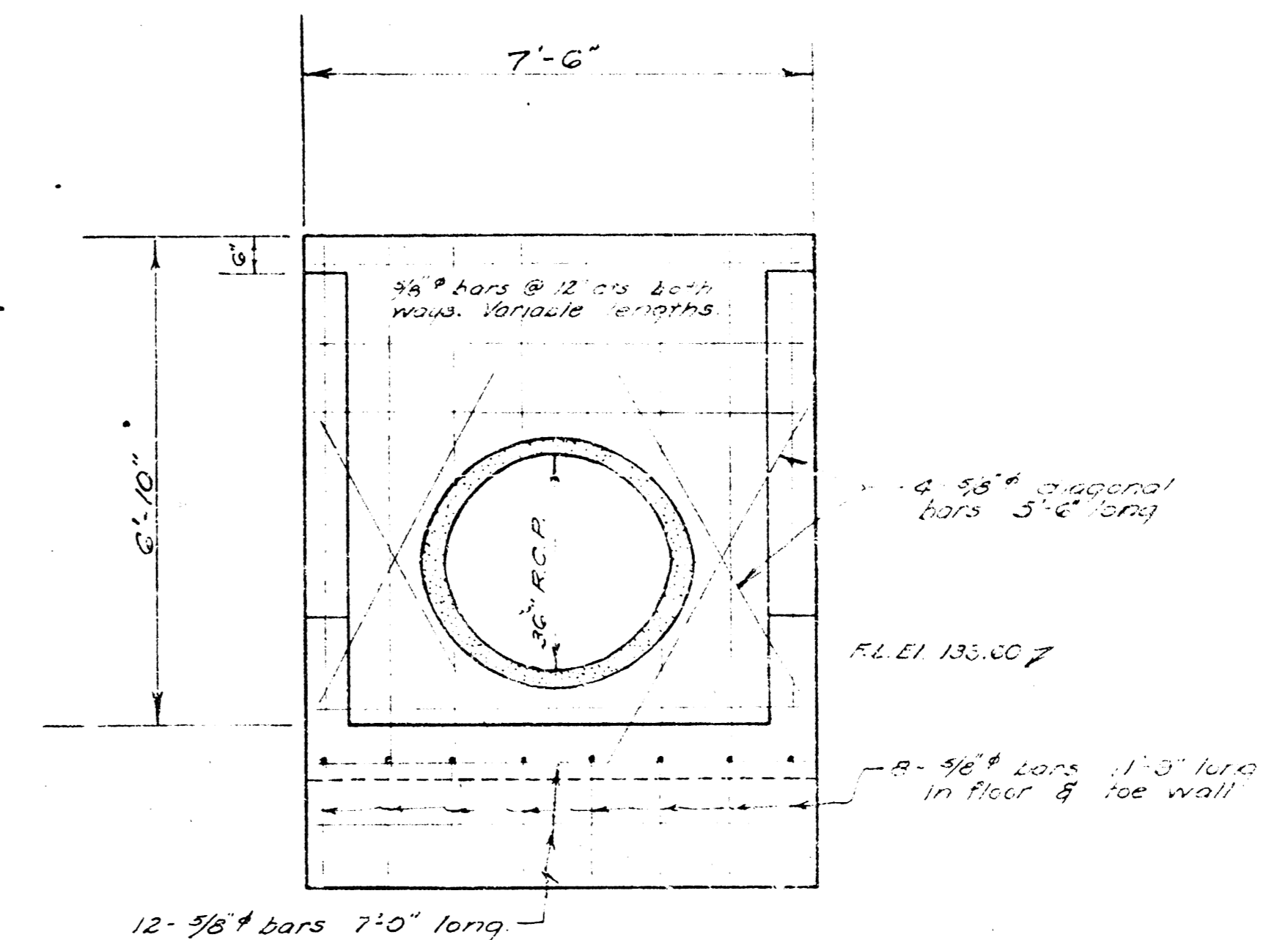
LINCOLN STREET
 WEST ARMOUR DRIVE
 OUTFALL STRUCTURE & DRAINAGE DITCH
 PLAN VIEW
 SCALE 1/2" = 1'-0"



ELEVATION
 CONCRETE ENCASEMENT DETAIL
 No Scale



SIDE ELEVATION

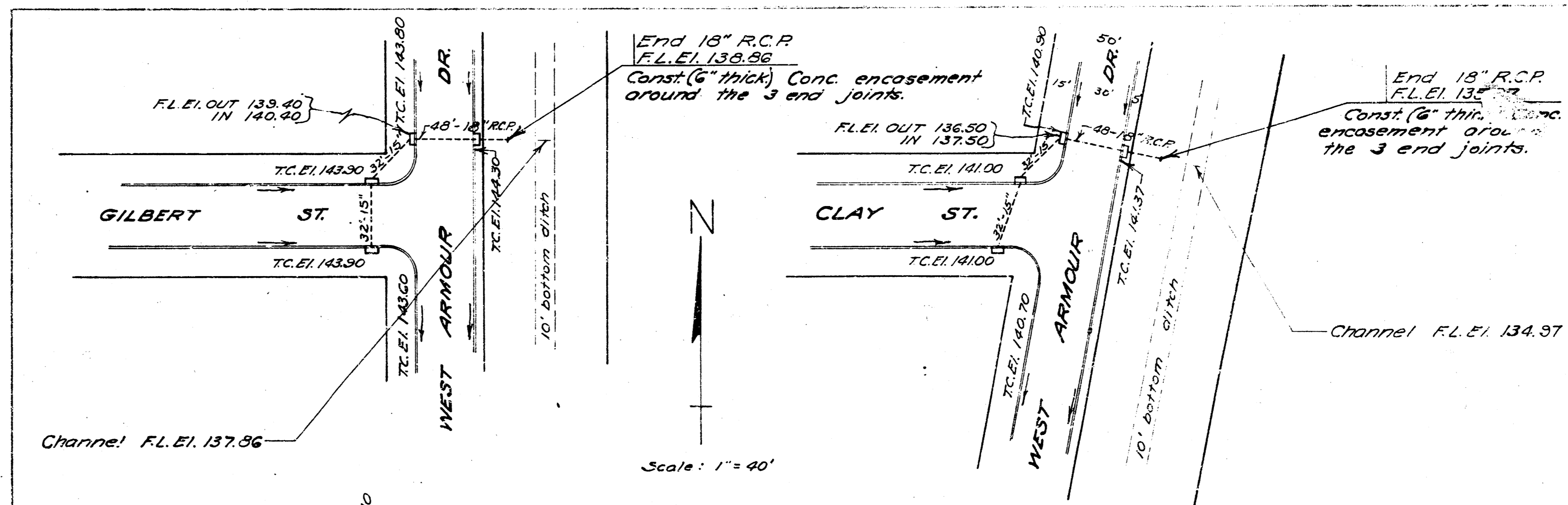


END ELEVATION

OUTFALL STRUCTURE

SCALE 1/2" = 1'-0"

Use 3/4" molding on all exposed edges.



INTERSECTION DETAILS

Construct inlets & laterals as shown.
 SAND BACKFILL CROSS STREET TRENCHES 20' OUTSIDE CURB LINES.

STORM WATER SEWER DIST. NO. 44
 CITY OF WICHITA KANSAS
 L.K. WHITE CITY ENGINEER
 Proj. No. C 22-20
 Date: JULY 1952