

SCALE: 1"=40'

Sta. 2+03 Construct Reinf. Conc. Manhole See Sh #7 for details

Sta. 5+78 Construct Reinf. Conc. Manhole See Sh #8 for details

Sta. 0+00 Construct Outfall Structure See Sh #8 for details

Sta. 6+48 Construct Reinf. Conc. Manhole See Sh #8 for details

Sta. 12+35 LINE 1 Sta. 2+65 " 2 Const. Reinf. Conc. Manhole See Sh #7 for details

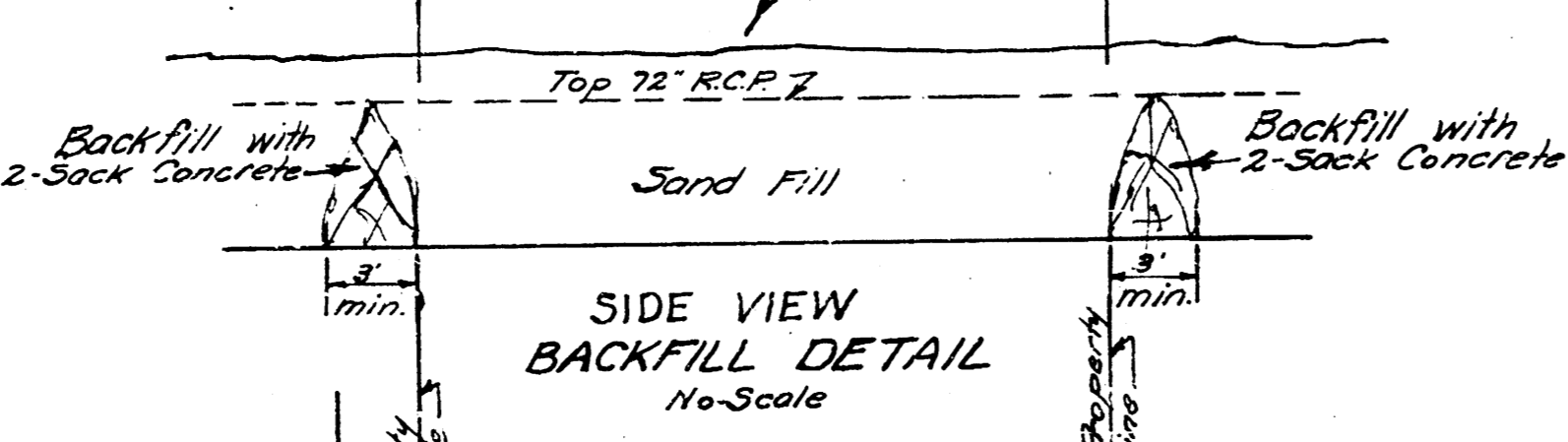
NOTE: Sand backfill trench from Sta. 1+15 to Sta. 12+35 Line 1 and all cross street laterals inside of curb lines.

See Sheet #3 for intersection details.

NOTE TO FIELD ENGINEER Locate Outfall Structure approx. 20' NW of proposed ditch.

Install 80" 72" R.C.P. F.L.E.I. North End 144.00 F.L.E.I. South End 143.20 BACKFILL TRENCH TO TOP OF PIPE ON EITHER END WITH 2-SACK CONCRETE (See Detail)

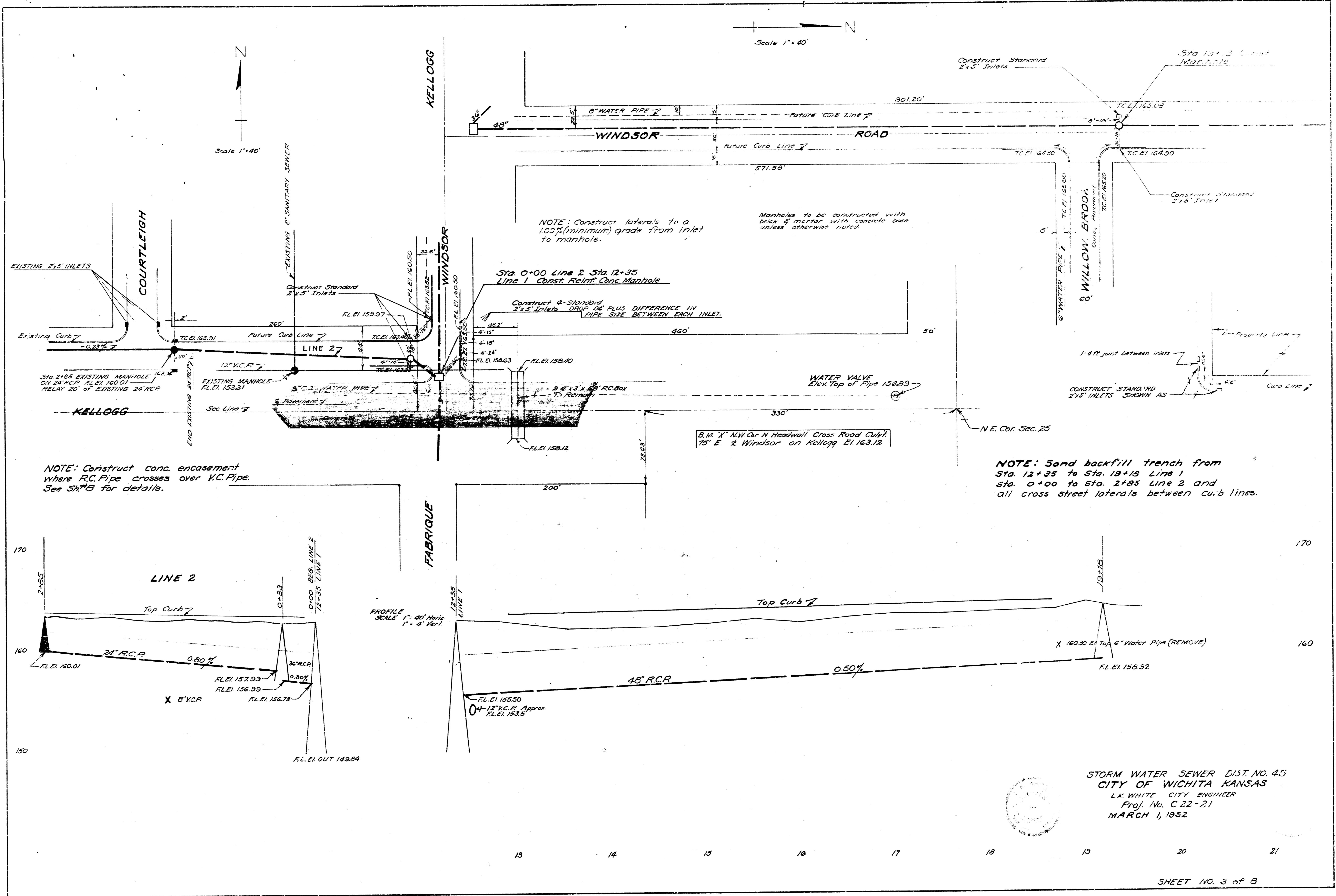
B.M. "R" in Ritchie G.E. of E. end radius N.E. cor. Cottonwood Lane & Woodlawn Blvd. E.I. 156.68



PROFILE SCALE: 1"=40' Horiz. 1"=8' Vert.

Drawn by J.L.A.
 Checked by M.A.B.
 Note Book No. 52Y 64Y 58Y

STORM WATER SEWER DIST. NO. 45
 CITY OF WICHITA KANSAS
 L.K. WHITE CITY ENGINEER
 Proj. No. C-22-21
 MARCH 1, 1932



Date Drawn by J.L.A.
 Checked by M.C.E.
 Note Book No. S-3 H-7 M-24

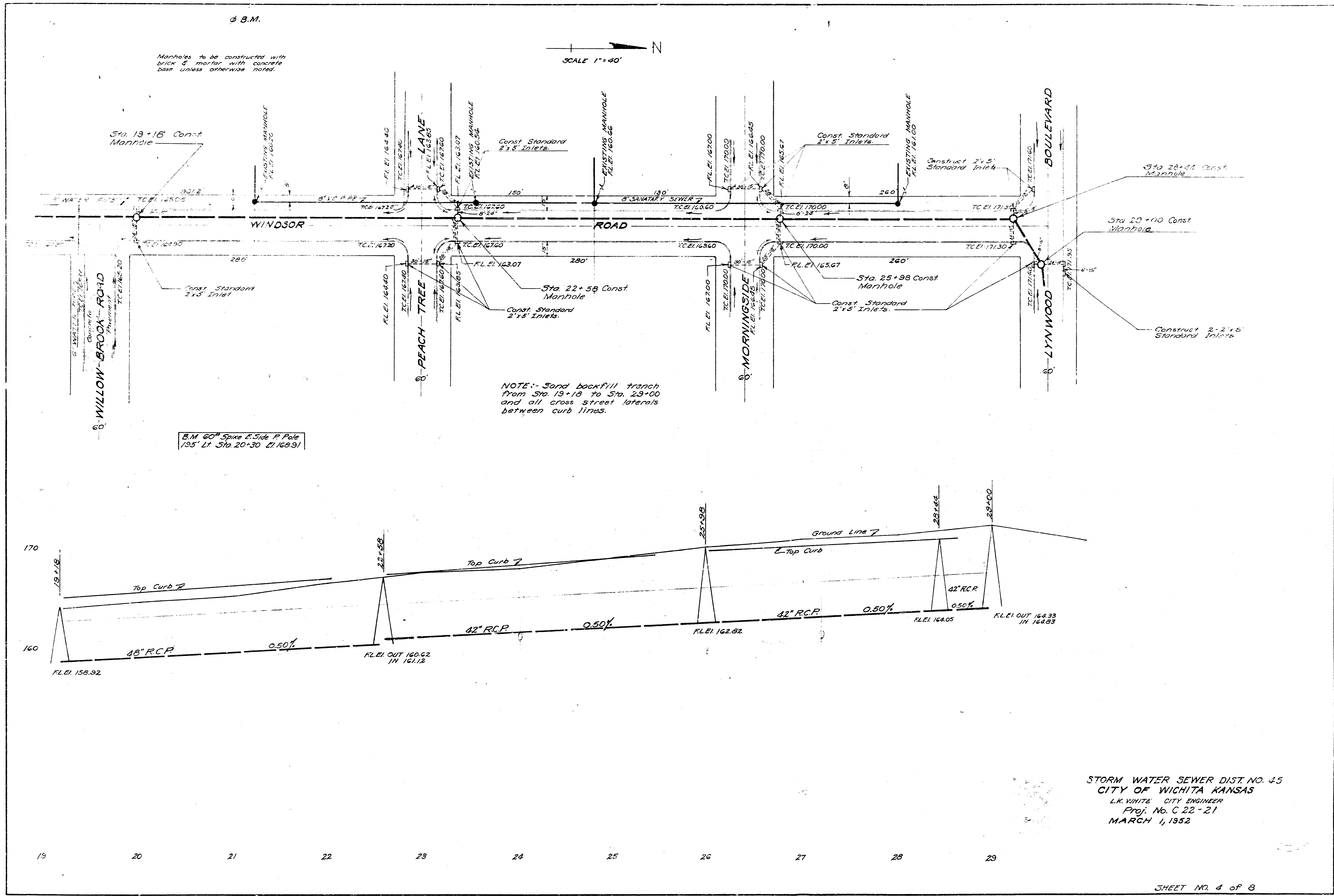
NOTE: Construct conc. encasement where R.C. Pipe crosses over V.C. Pipe. See Sht. B for details.

NOTE: Construct laterals to a 1.05% (minimum) grade from inlet to manhole.

Manholes to be constructed with brick & mortar with concrete base unless otherwise noted.

NOTE: Sand backfill trench from Sta. 12+35 to Sta. 19+18 Line 1 Sta. 0+00 to Sta. 2+85 Line 2 and all cross street laterals between curb lines.

STORM WATER SEWER DIST. NO. 45
 CITY OF WICHITA KANSAS
 L.K. WHITE CITY ENGINEER
 Proj. No. C 22-21
 MARCH 1, 1952



Manholes to be constructed with brick & mortar with concrete base unless otherwise noted.

SCALE 1"=40'

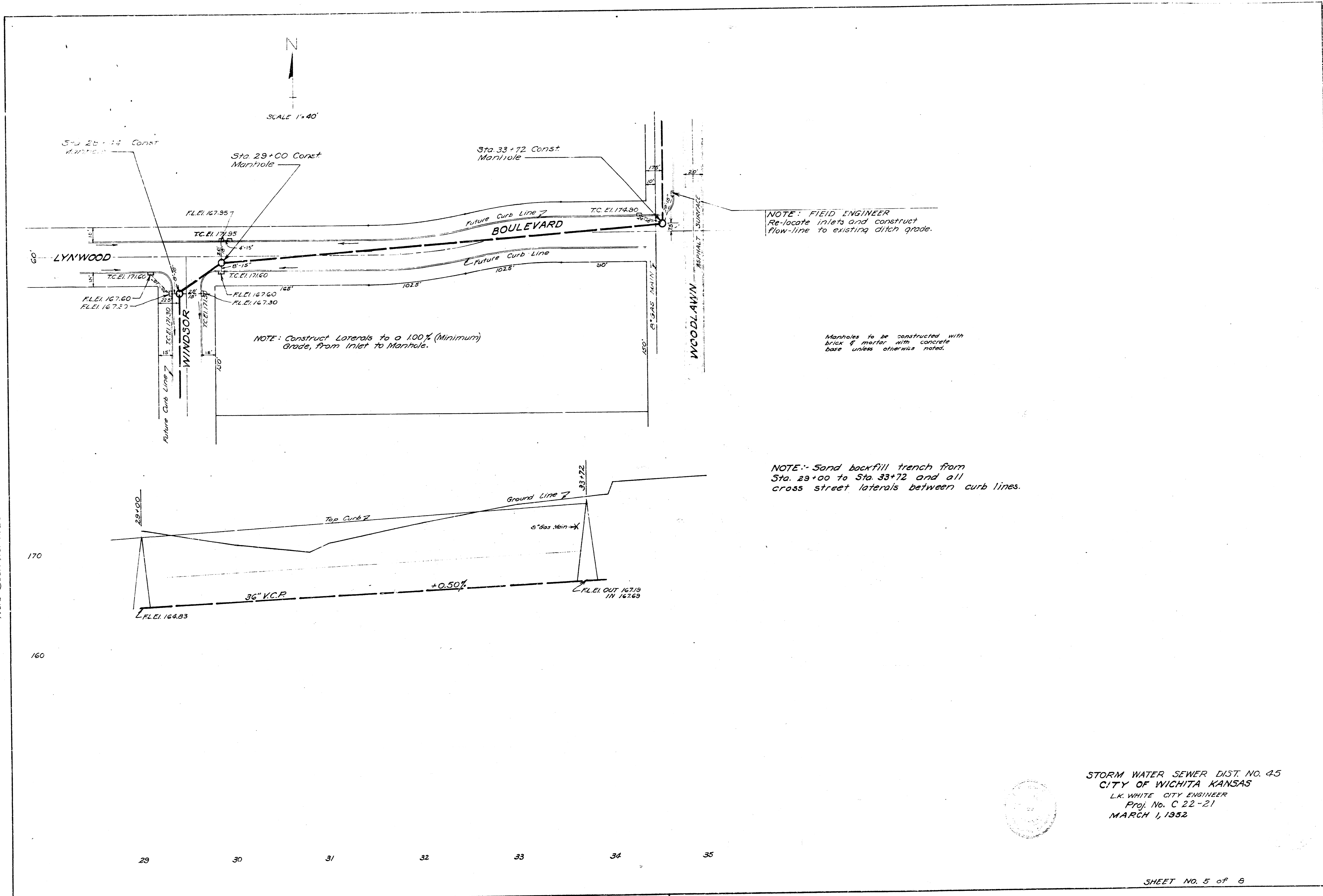
NOTE: - Sand backfill trench from Sta. 19+18 to Sta. 23+00 and all cross street laterals between curb lines.

B.M. 60" Spike & Side P. Pole
135' Lt. Sta. 20+30 (168.9)

Date
Drawn by J.L.A.
Checked by
Note Book No. M 25

STORM WATER SEWER DIST. NO. 45
CITY OF WICHITA KANSAS
L.K. WHITE CITY ENGINEER
Proj. No. C 22-21
MARCH 1, 1952

Date:
 Drawn by: J.L.A.
 Checked by:
 Note: Book 16, P. 25



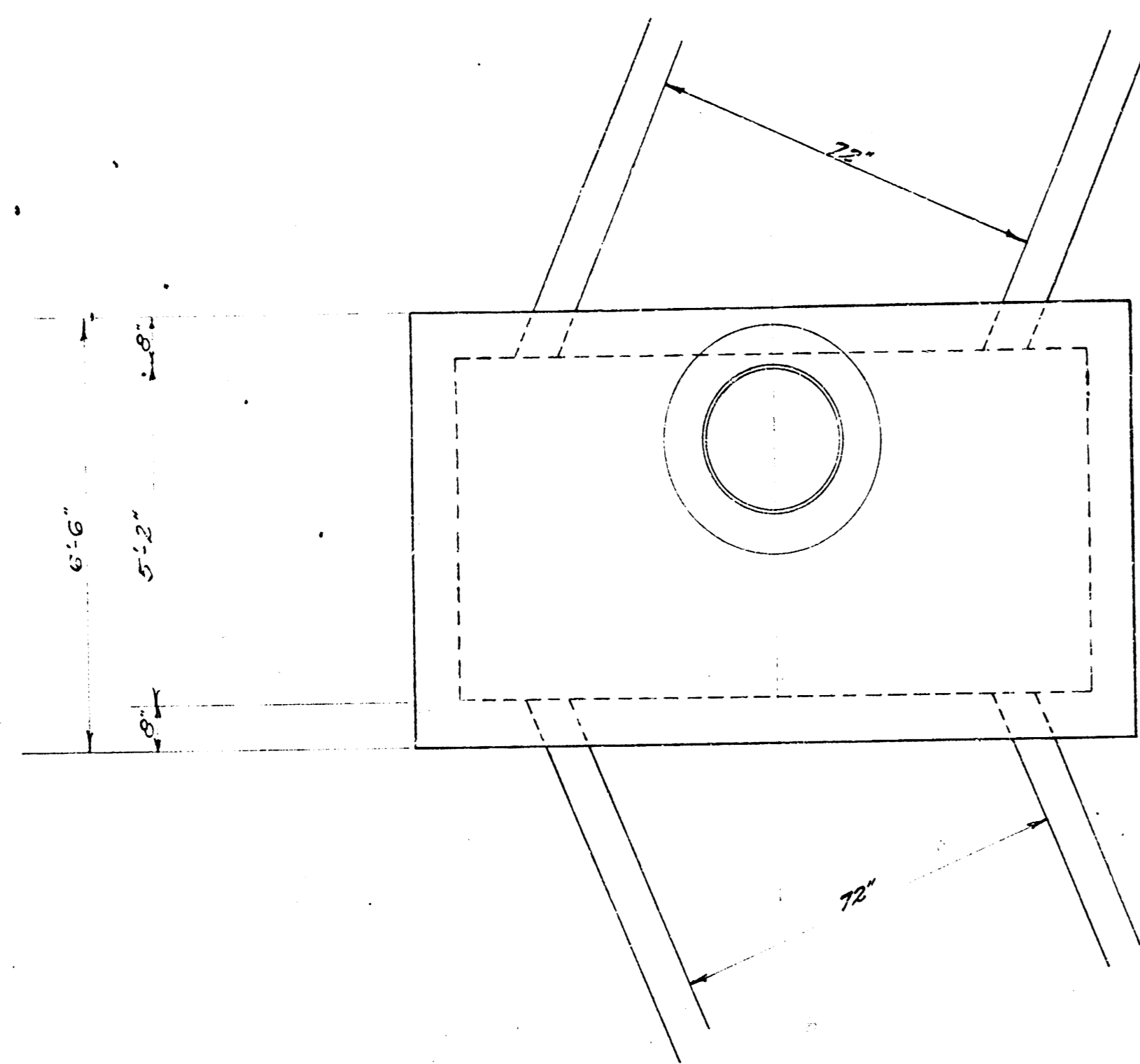
NOTE: Construct Laterals to a 1.00% (Minimum) Grade, from Inlet to Manhole.

NOTE: FIELD ENGINEER
Re-locate inlets and construct flow-line to existing ditch grade.

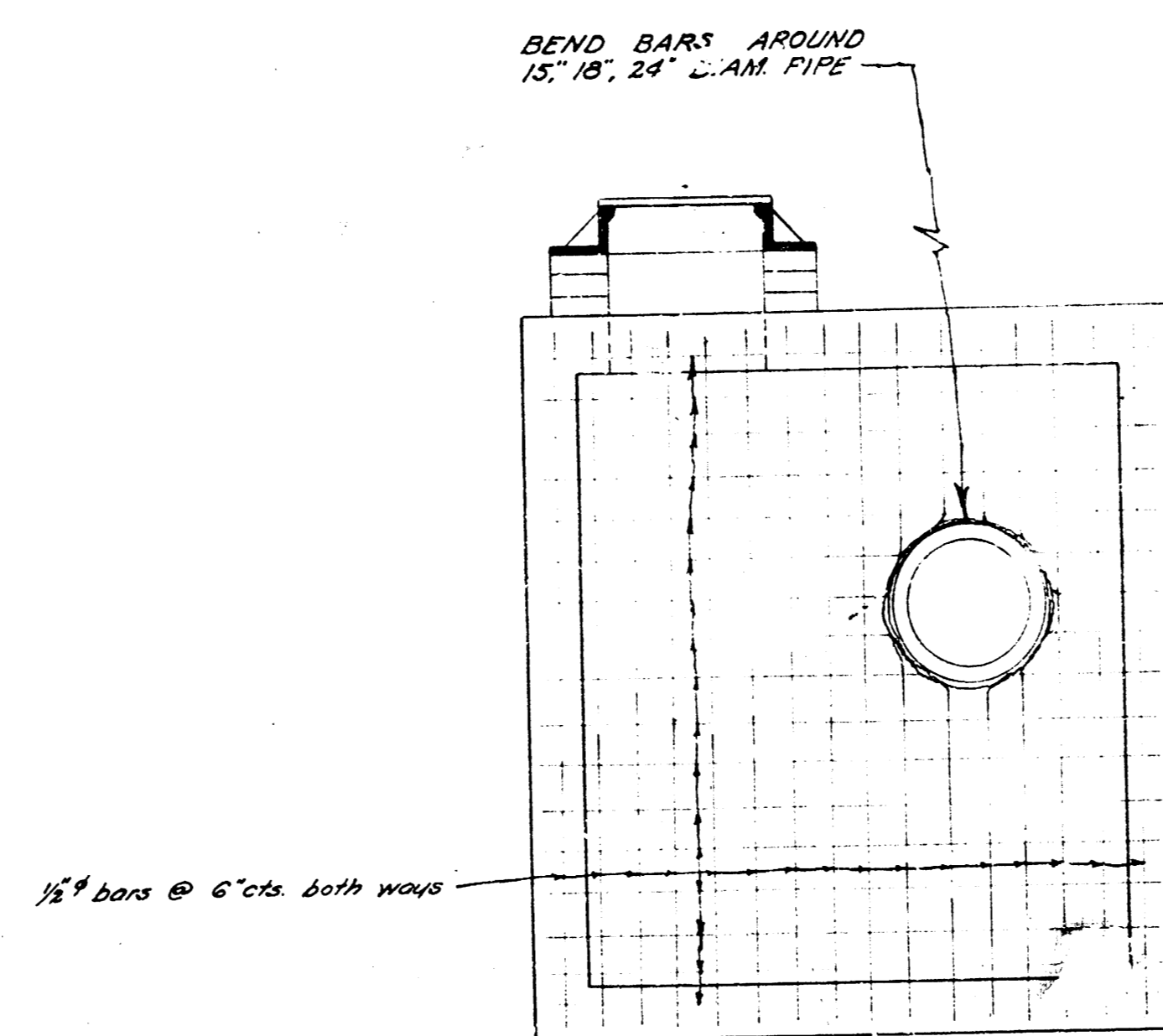
Manholes to be constructed with brick & mortar with concrete base unless otherwise noted.

NOTE: Sand backfill trench from Sta. 29+00 to Sta. 33+72 and all cross street laterals between curb lines.

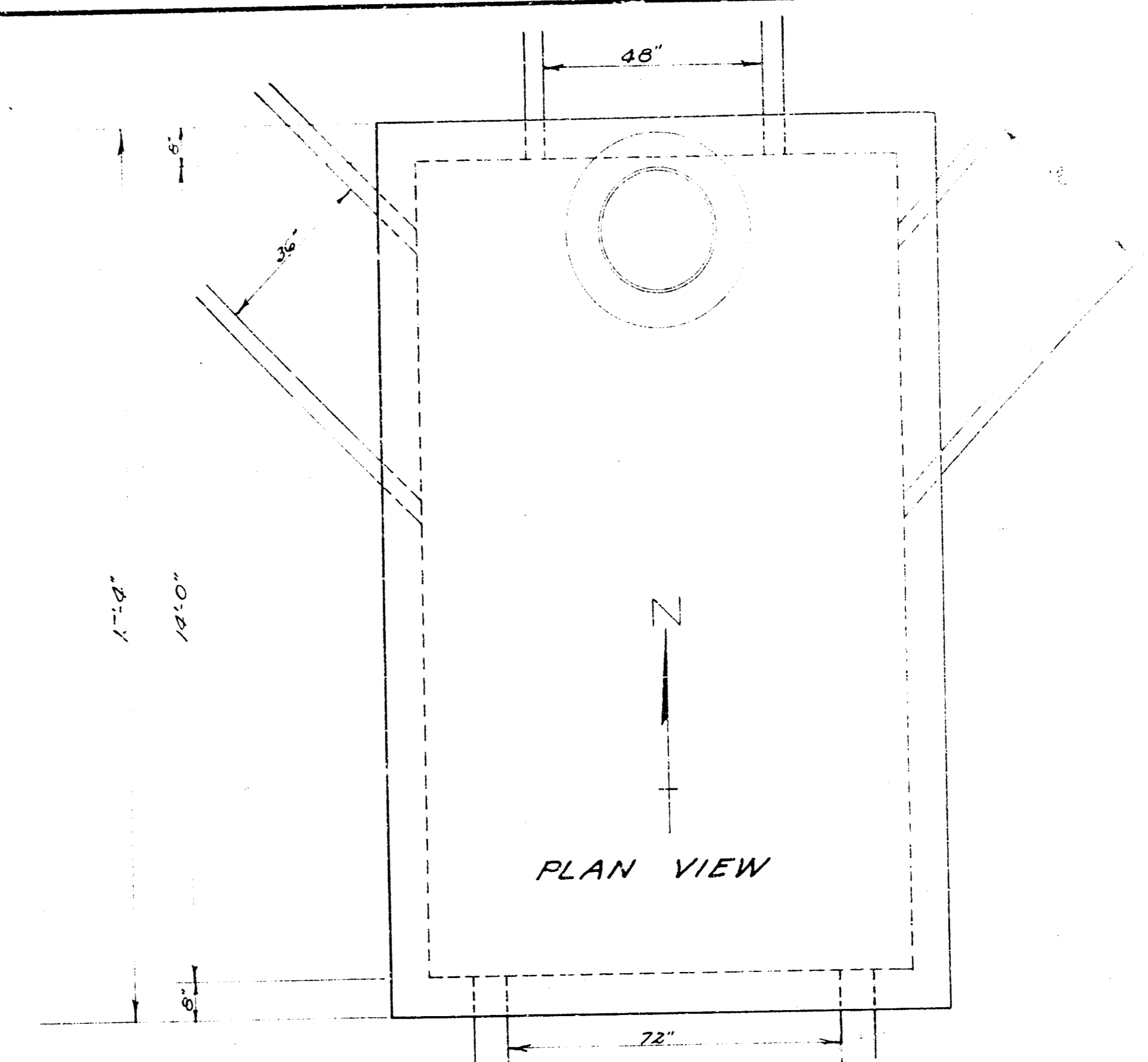
STORM WATER SEWER DIST. NO. 45
 CITY OF WICHITA KANSAS
 L.K. WHITE CITY ENGINEER
 Proj. No. C 22-21
 MARCH 1, 1952



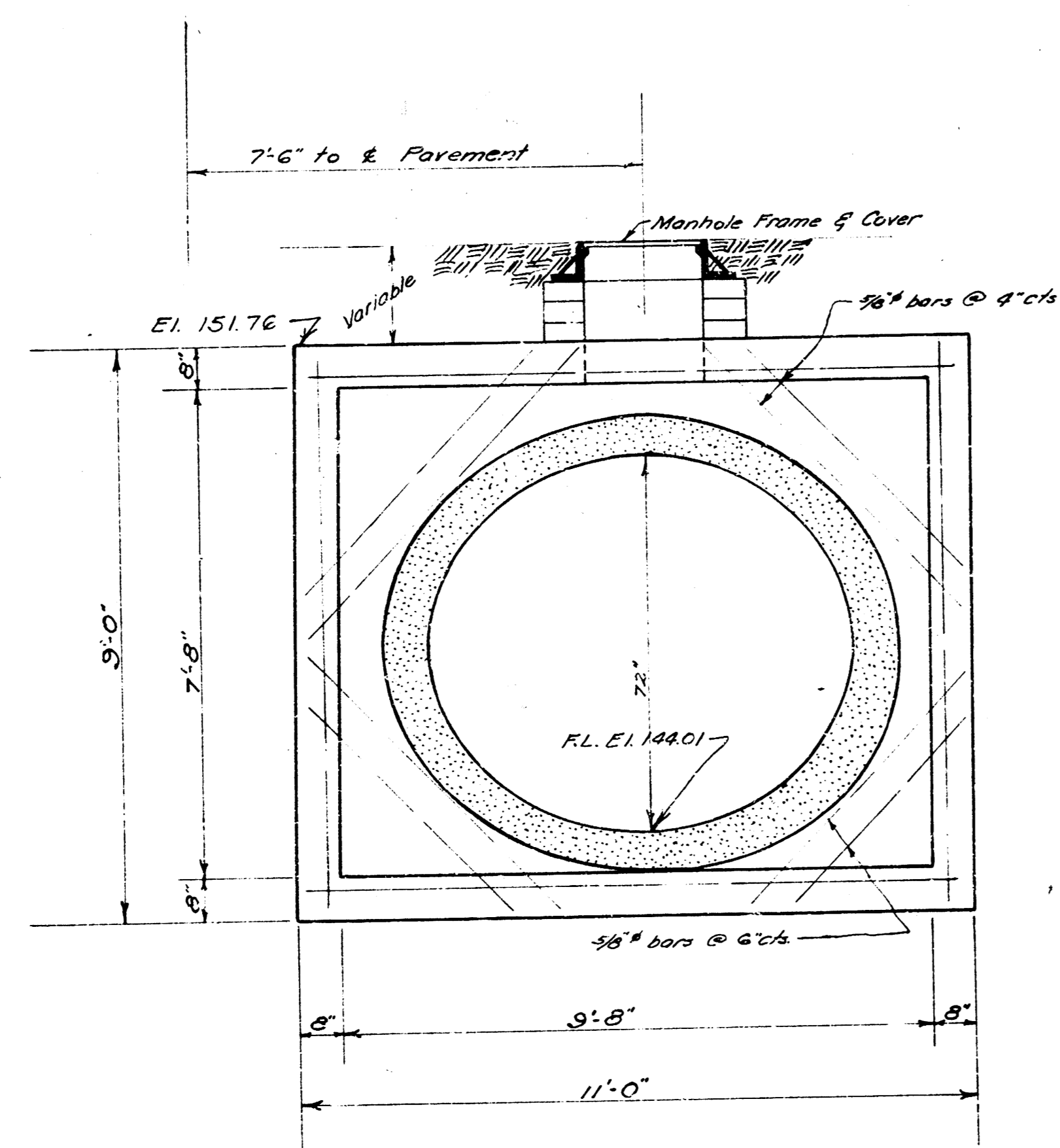
PLAN VIEW



TYPICAL WALL SEC.
STEEL PATTERN

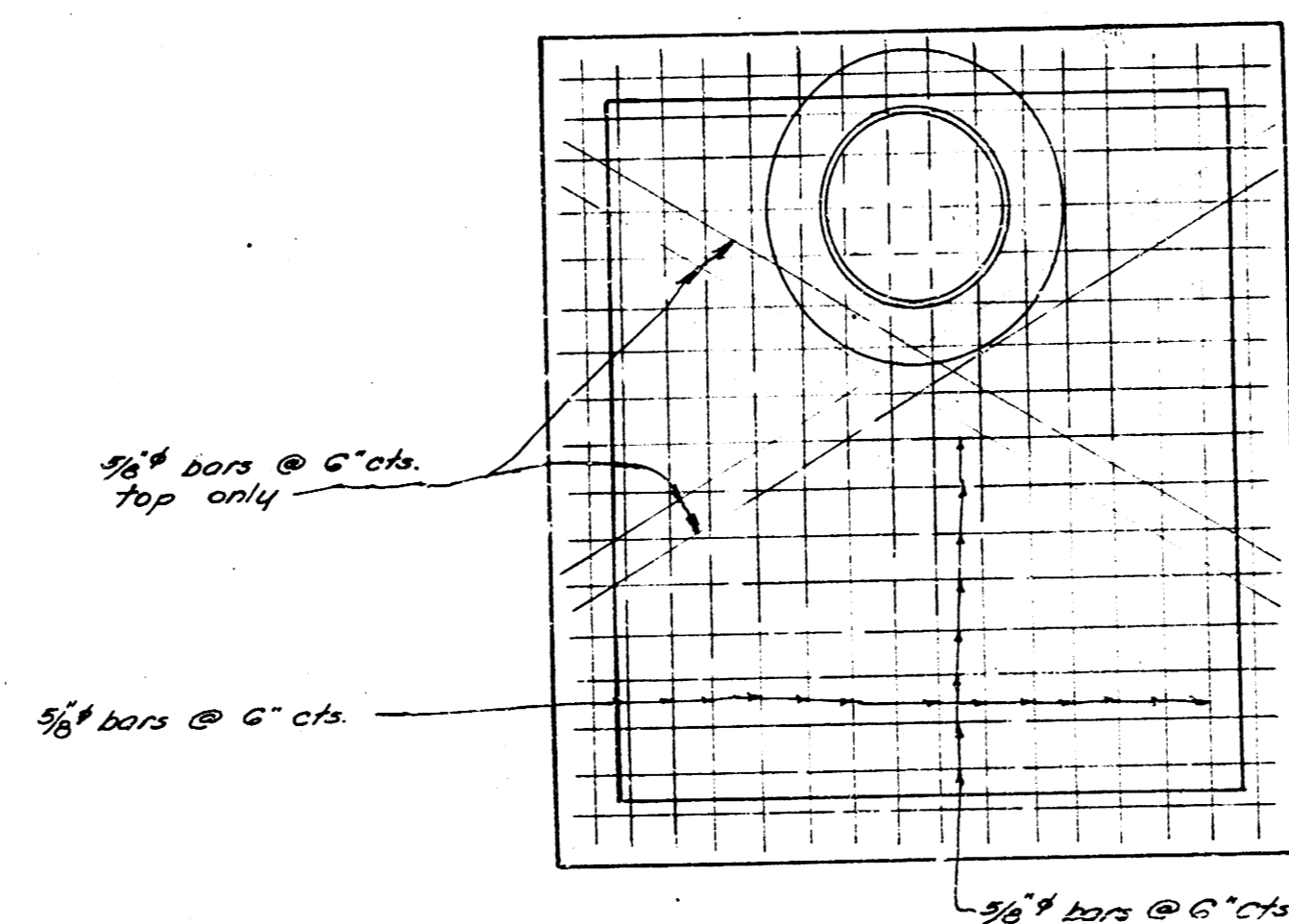


PLAN VIEW



ELEVATION

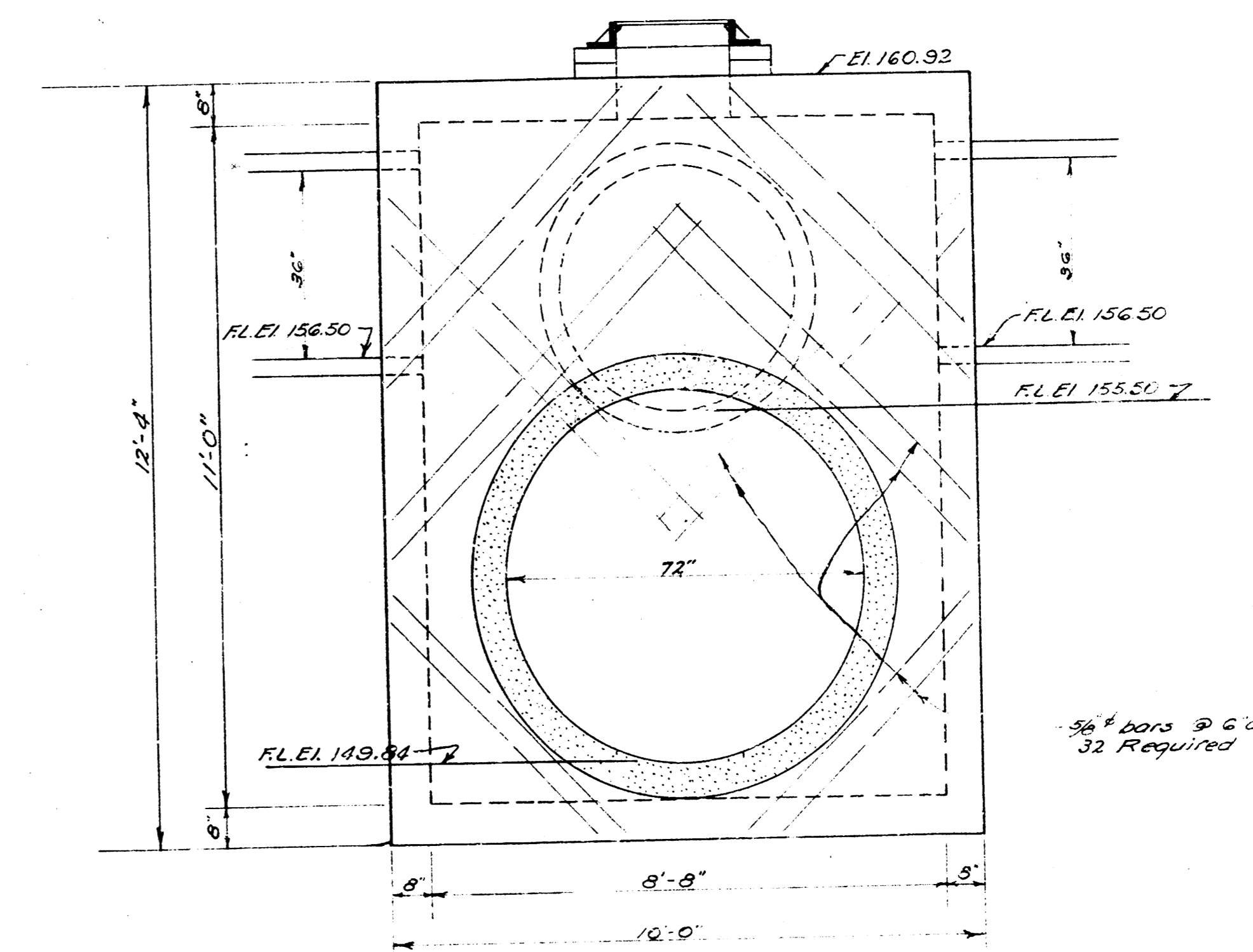
REINF. CONC. MANHOLE DETAIL
Sta. 2+63 Line 1
Scale 1/2" = 10'



TYPICAL SEC. TOP & BOTTOM
STEEL PATTERN
No Scale

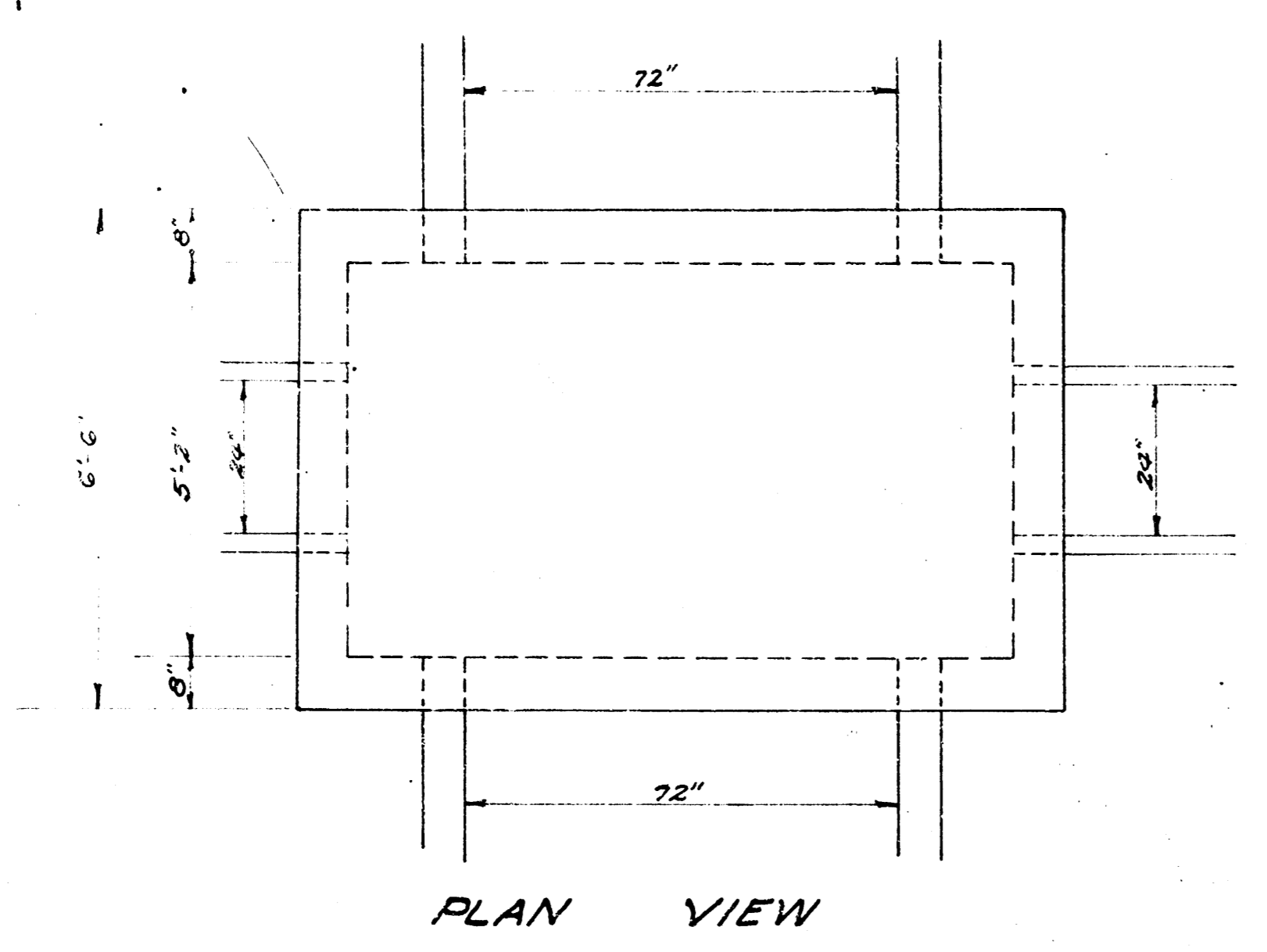
Concrete for manholes shall contain not less than 1.65 bbls. of cement per cu yd. of conc. In no event shall the total water content exceed 6.25 gals. per sack of cement. The mixture of fine and coarse aggregate shall be such as will produce a maximum density and the most workable mixture.

IN GENERAL: Pipes will enter and leave the manhole at various angles and elevations. Where possible bend reinforcing bars around pipes. Where pipes are large, use 3/8" diagonal bars as shown. The floor of the manhole is to be sloped for flow and drainage with conc. No deductions in conc. quantities shall be made for pipe openings. No addition in conc. quantities shall be made for shaping manhole floor. An internal vibrator is to be used for placing concrete.

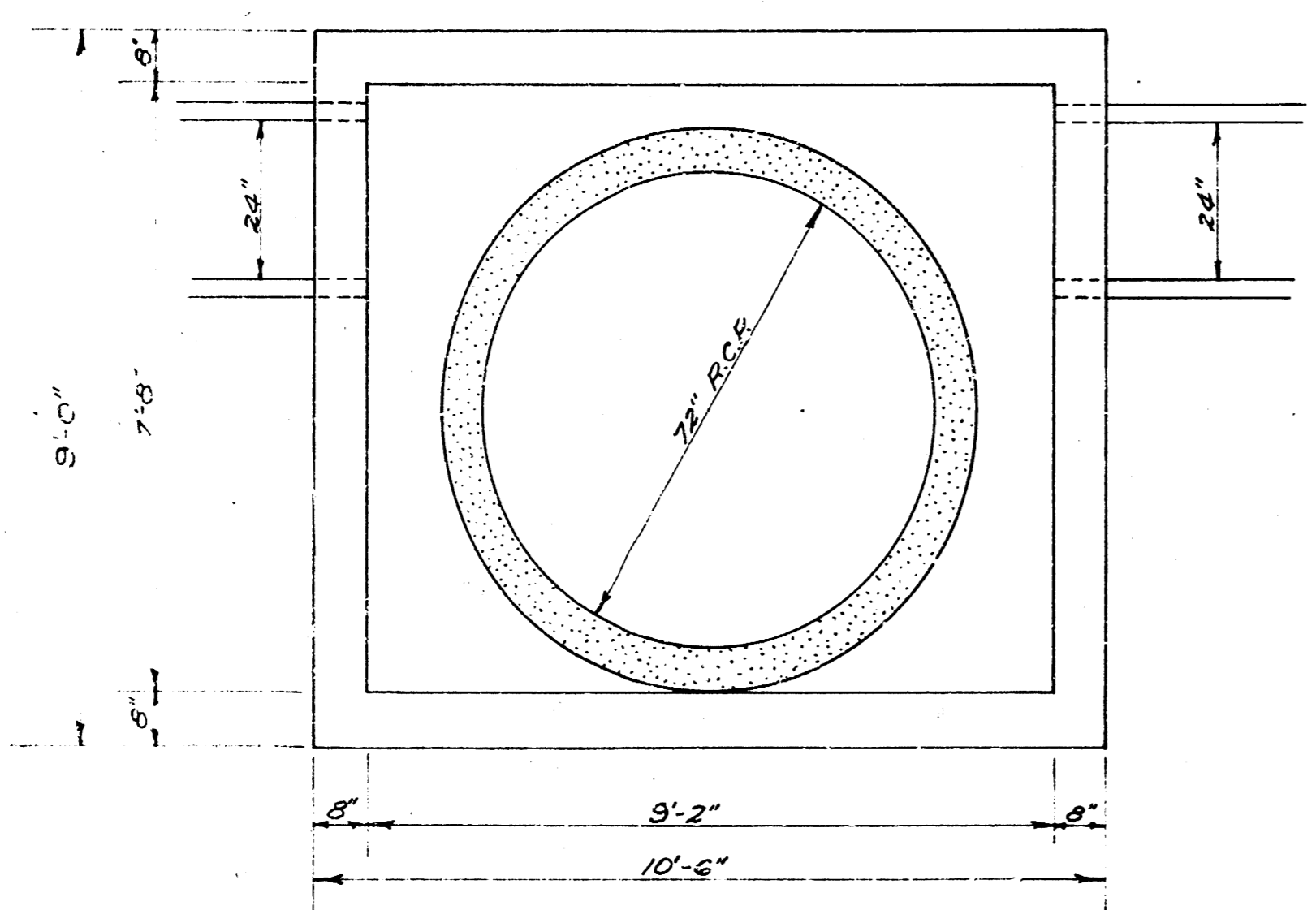


ELEVATION
TWO END WALLS
REINF. CONC. MANHOLE Sta. 12+35 Line 1
Sta. 0+00 " 2
Scale 1/2" = 10'

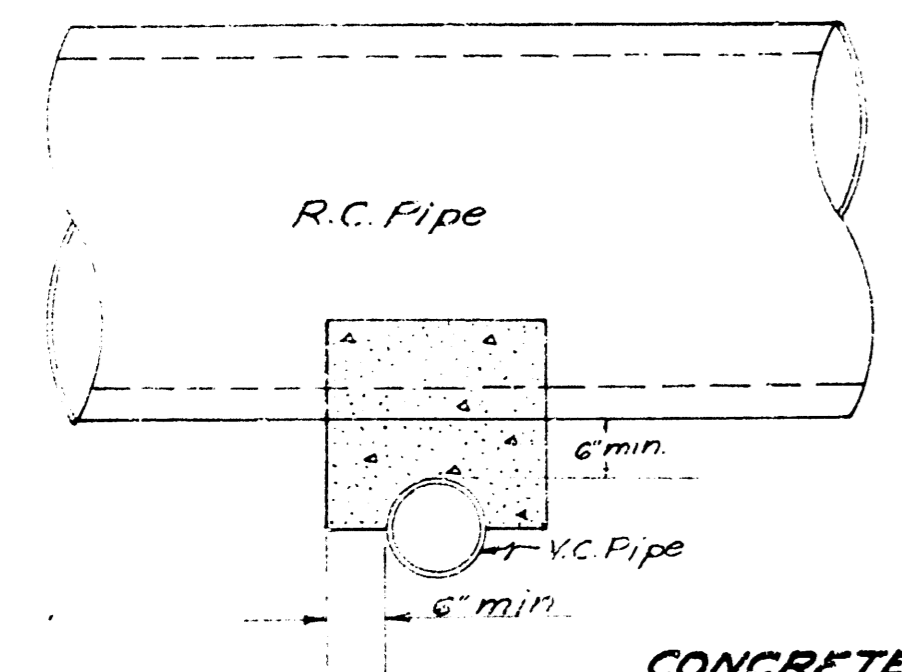
STORM WATER SEWER DIST. NO. 25
CITY OF WICHITA KANSAS
L.K. WHITE CITY ENGINEER
Proj. No. C 22-21
MARCH 1, 1952



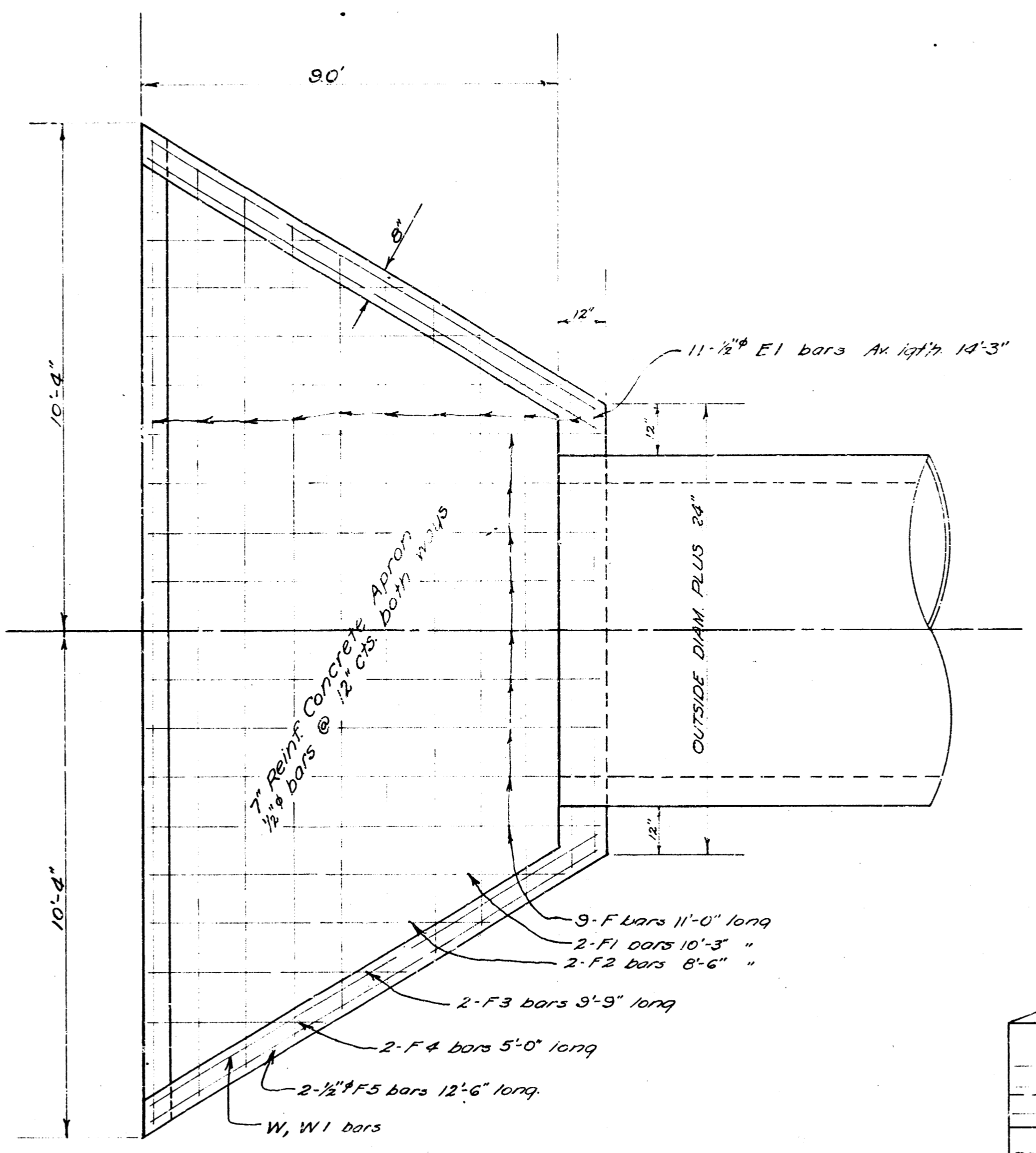
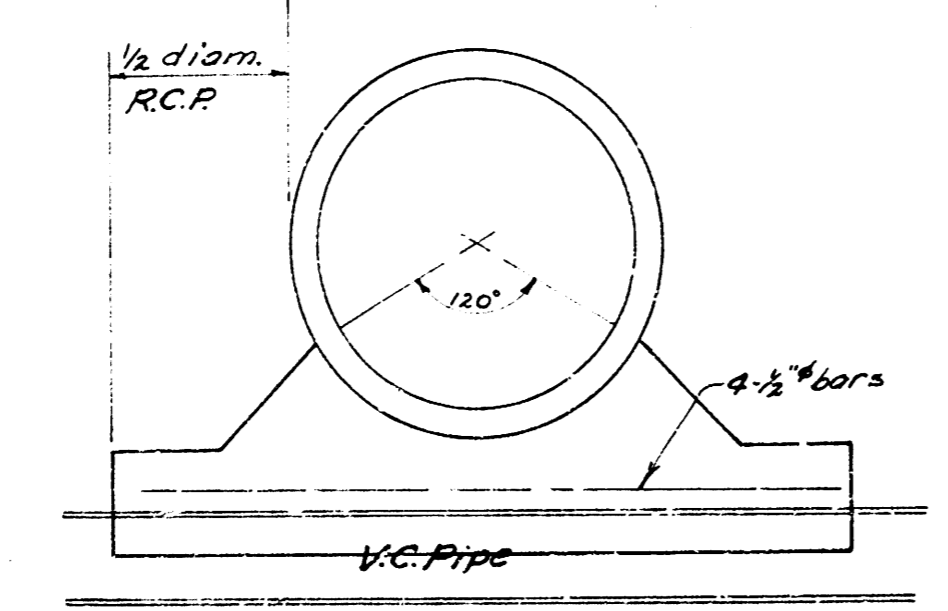
PLAN VIEW



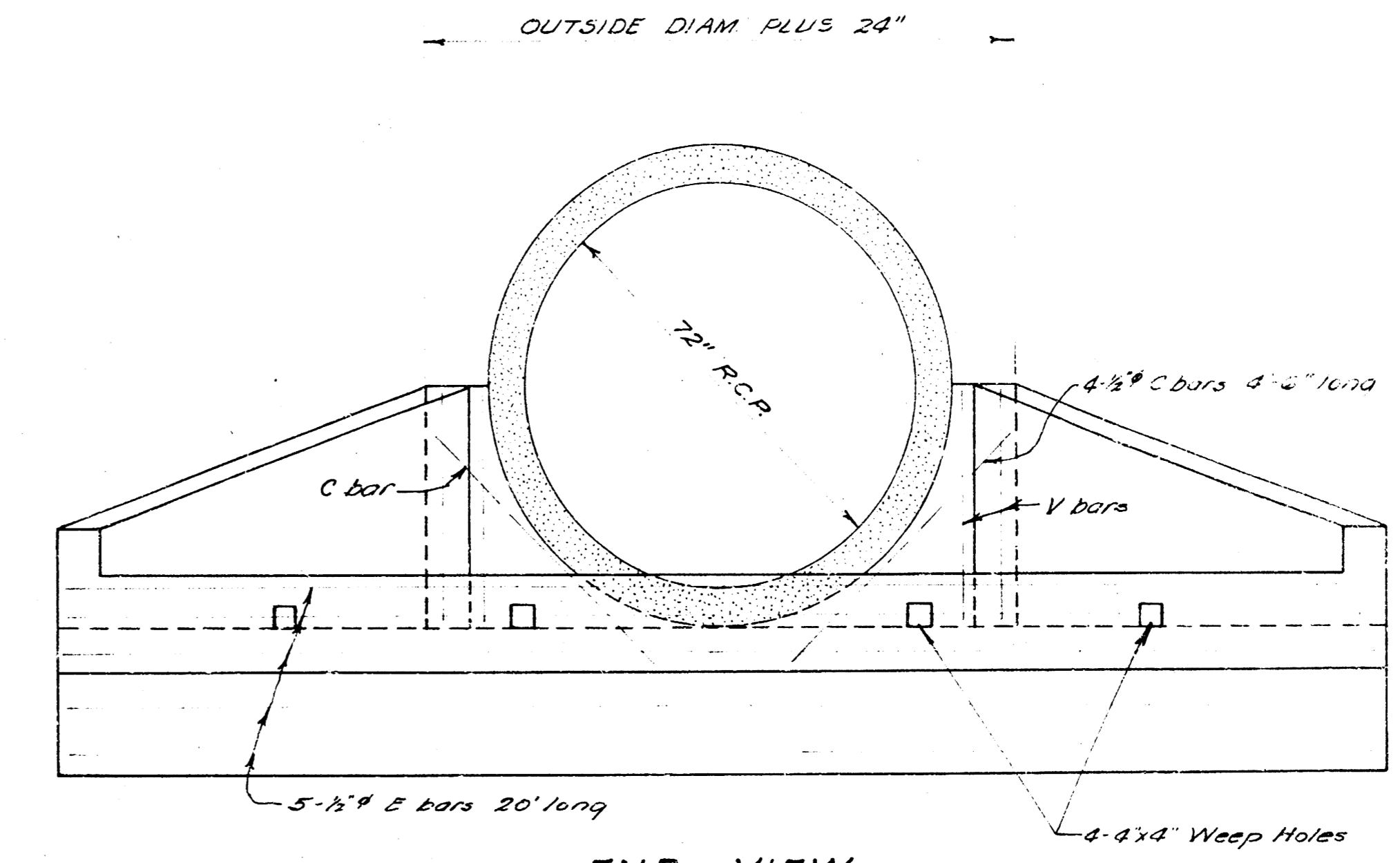
ELEVATION
TWO END WALLS
REINF. CONC. MANHOLE DETAIL
Sta. 5+78 Line 1
Sta. 8+48 " 1



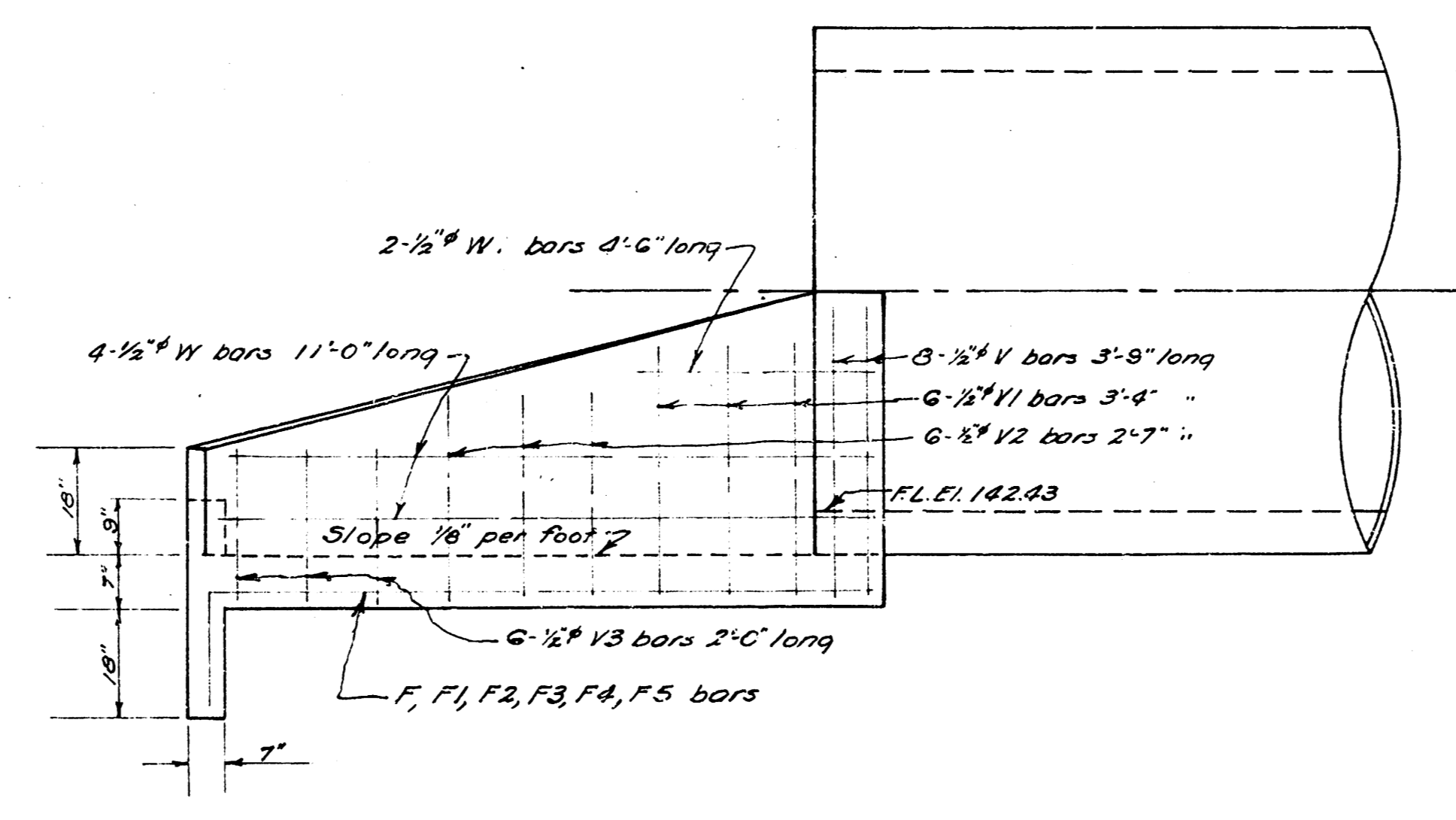
CONCRETE ENCASEMENT DETAIL
No Scale



PLAN VIEW



END VIEW



ELEVATION

OUTFALL STRUCTURE
SCALE 1/2" = 1'

STORM WATER SEWER DIST. NO. 45
CITY OF WICHITA KANSAS
L.K. WHITE CITY ENGINEER
Proj. No. C22-21
MARCH 1, 1952