

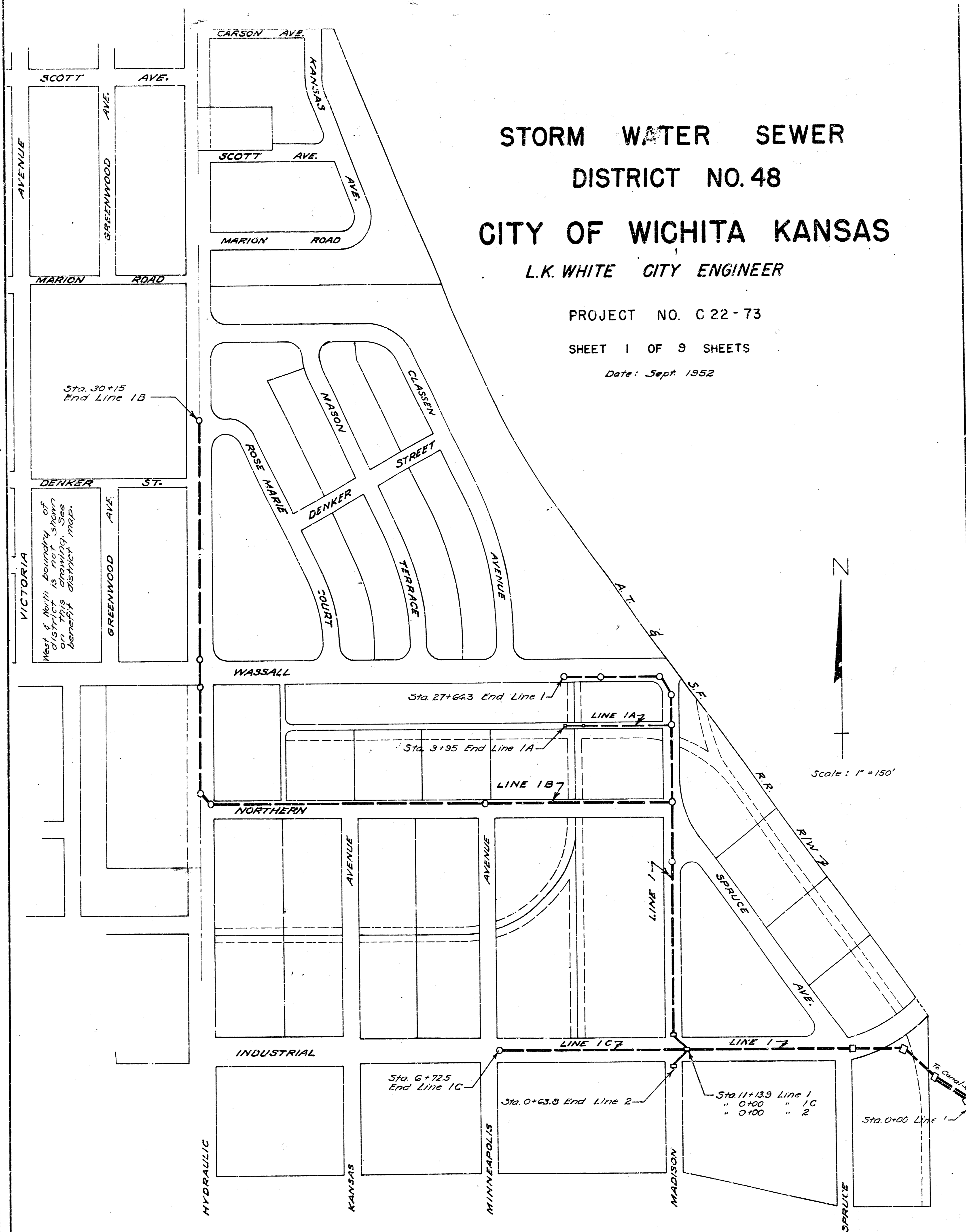
STORM WATER SEWER
 DISTRICT NO. 48
 CITY OF WICHITA KANSAS

L.K. WHITE CITY ENGINEER

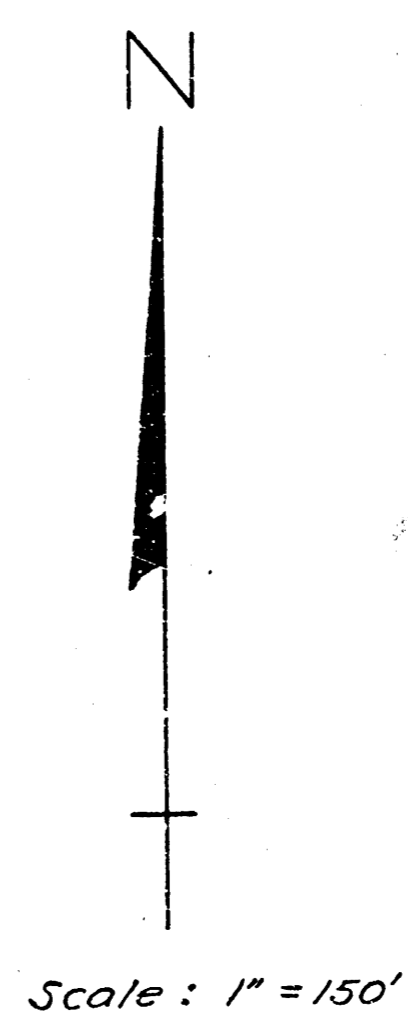
PROJECT NO. C 22-73

SHEET 1 OF 9 SHEETS

Date: Sept. 1952

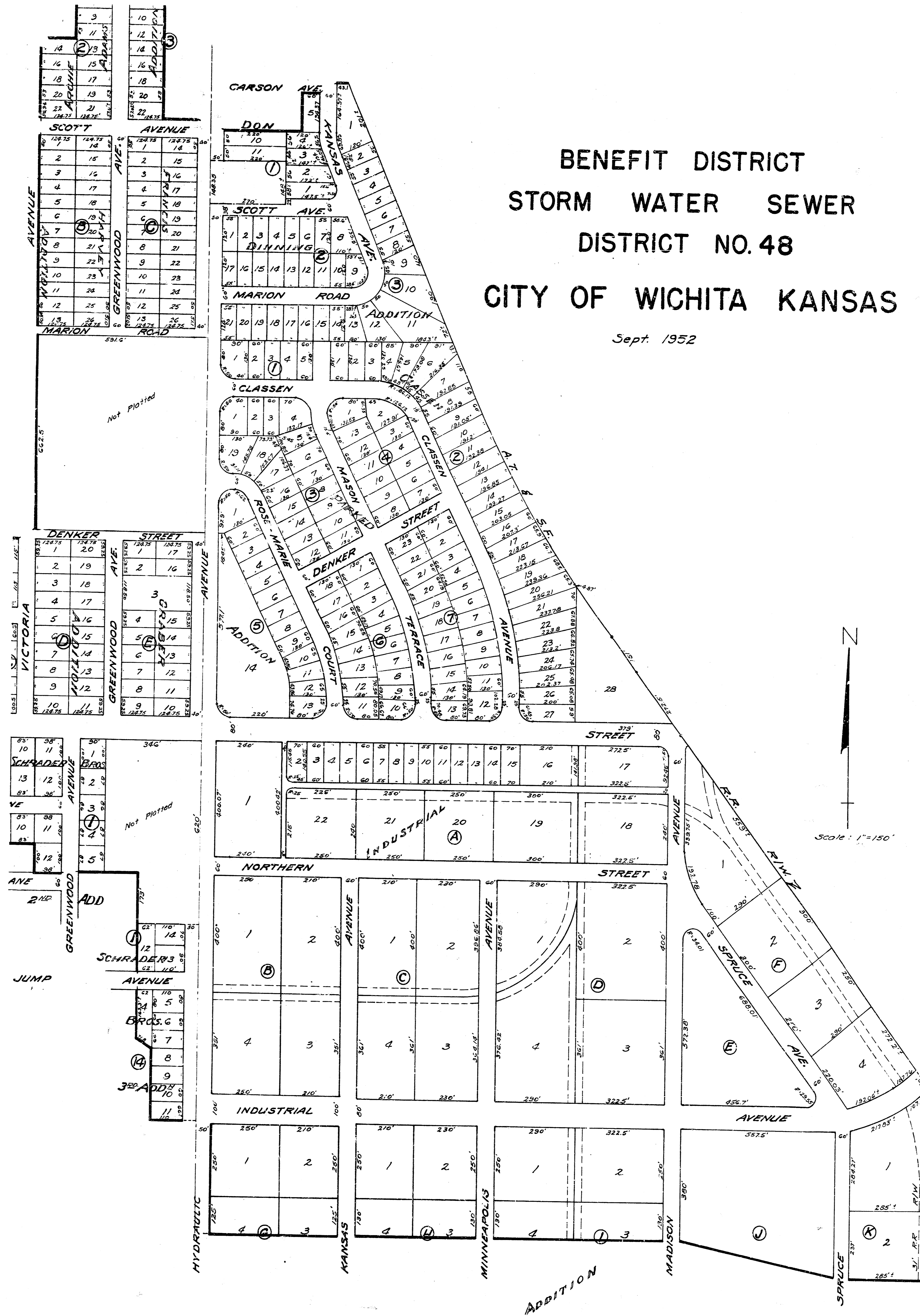
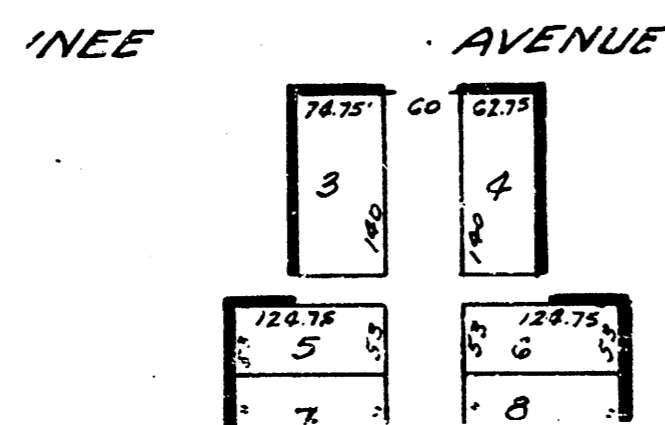
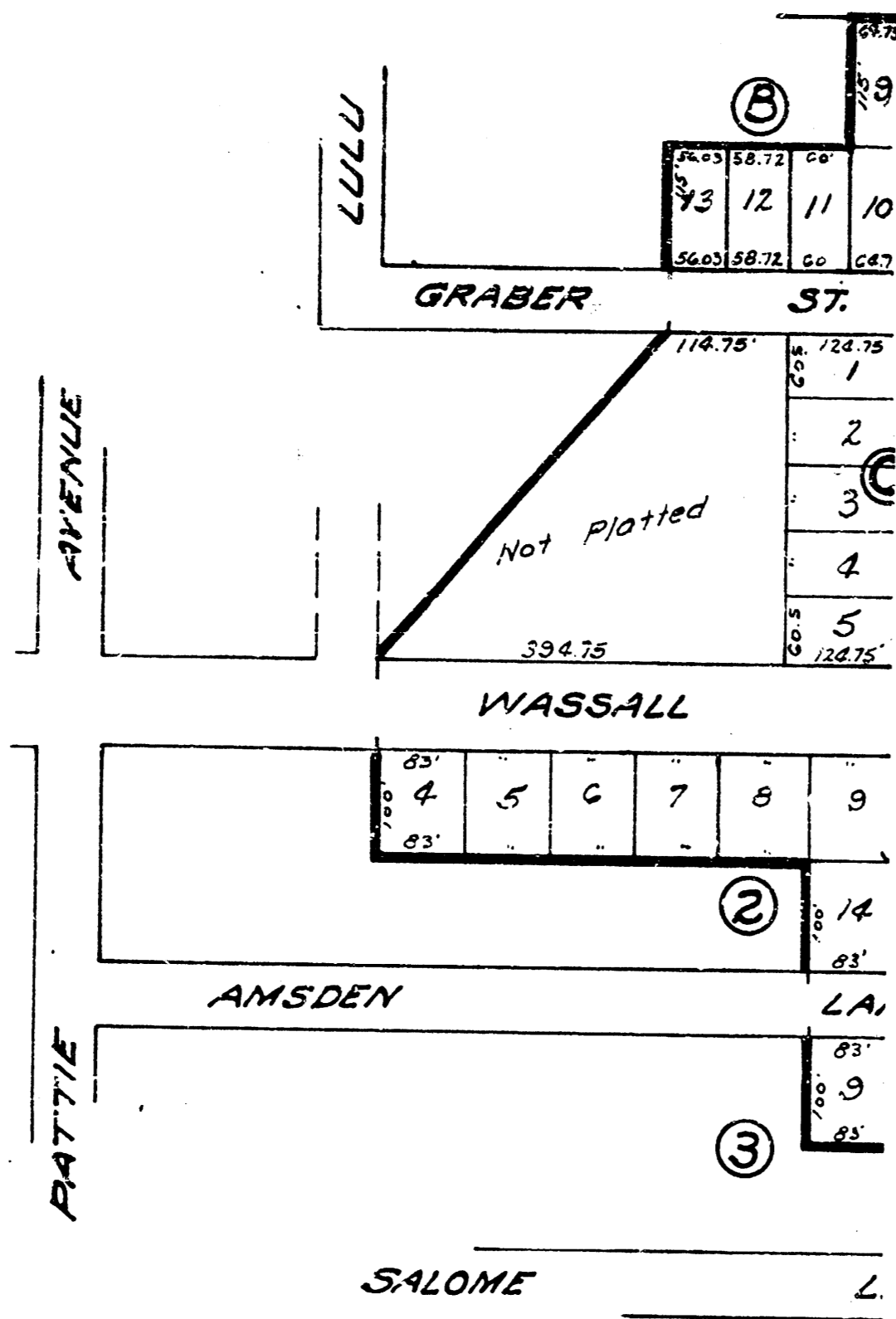


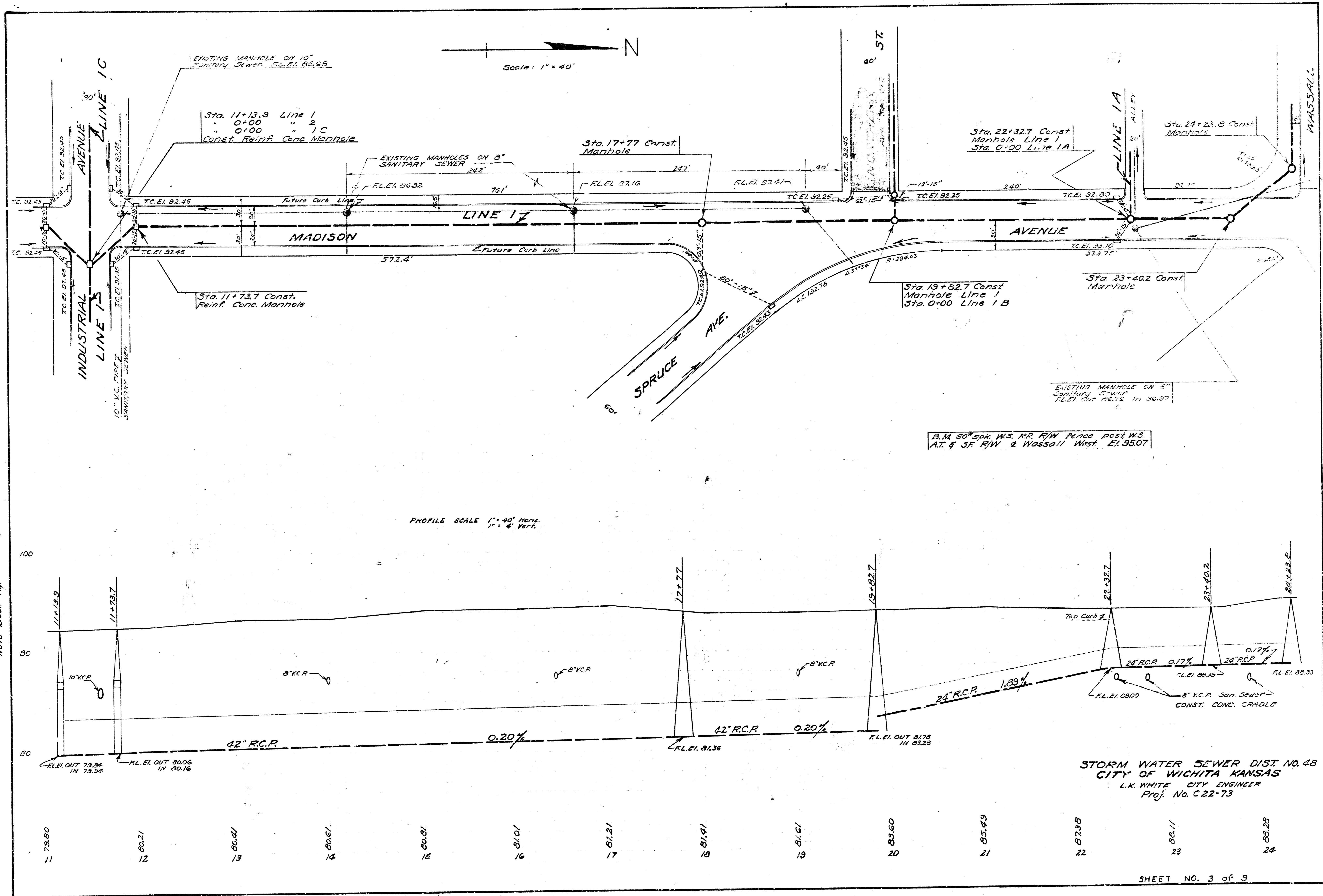
West & North boundary of district is not shown on this drawing. See benefit district map.



**BENEFIT DISTRICT
STORM WATER SEWER
DISTRICT NO. 48
CITY OF WICHITA KANSAS**

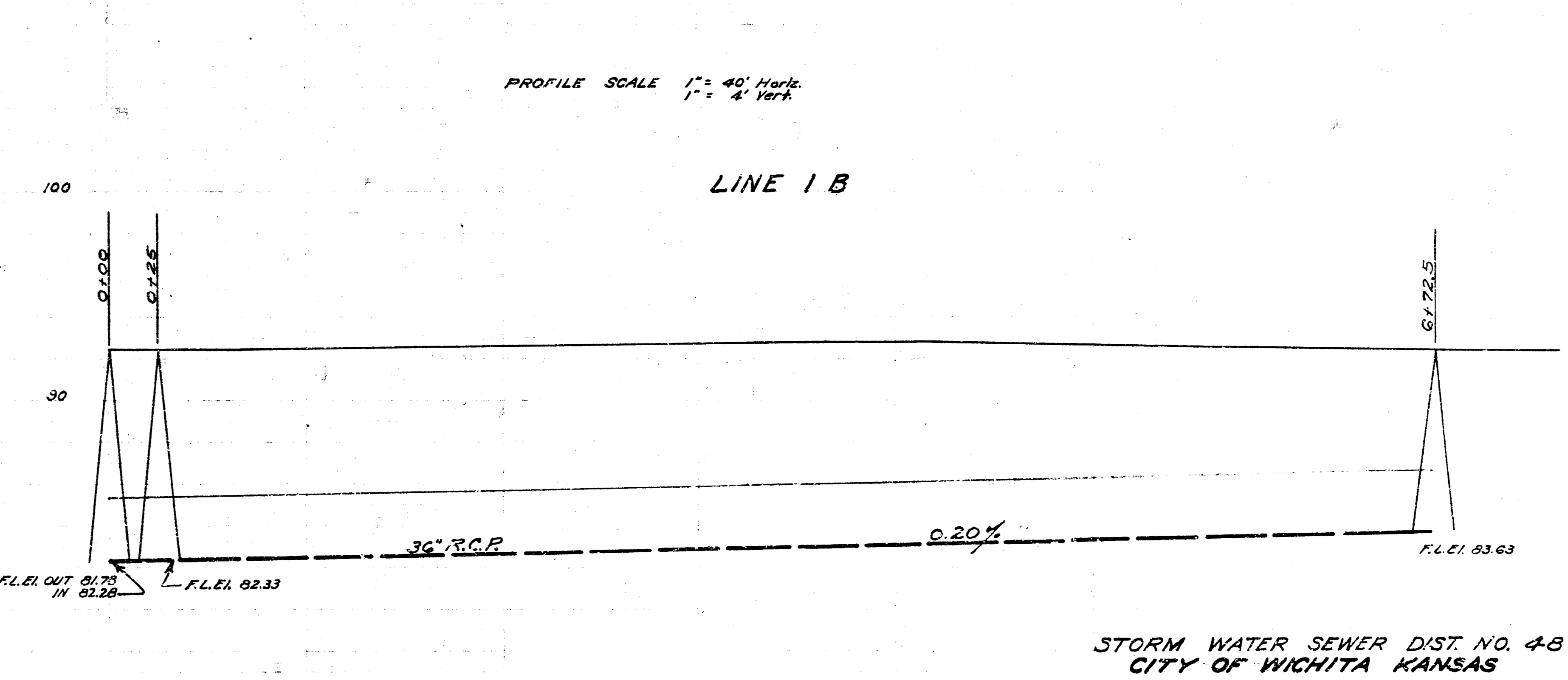
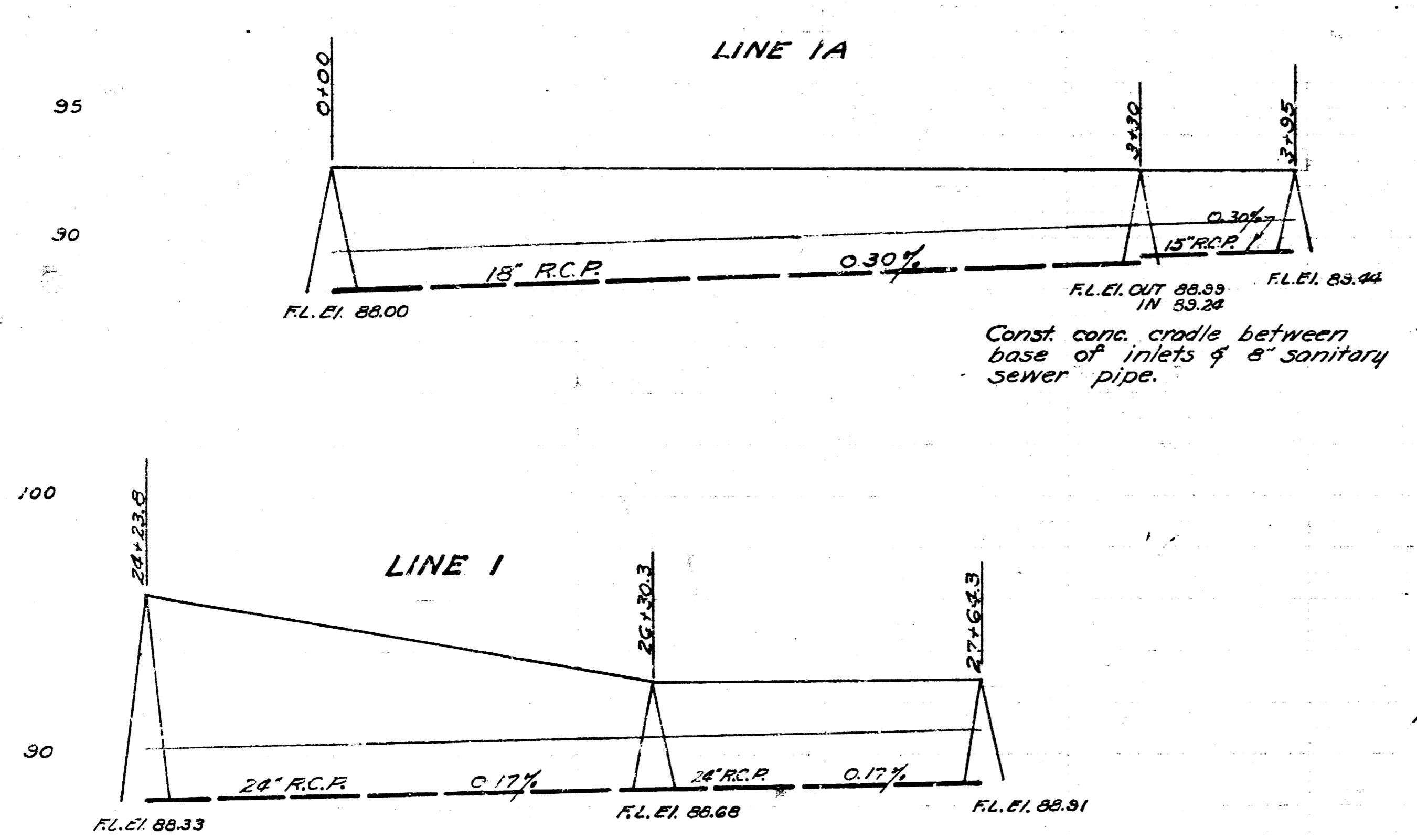
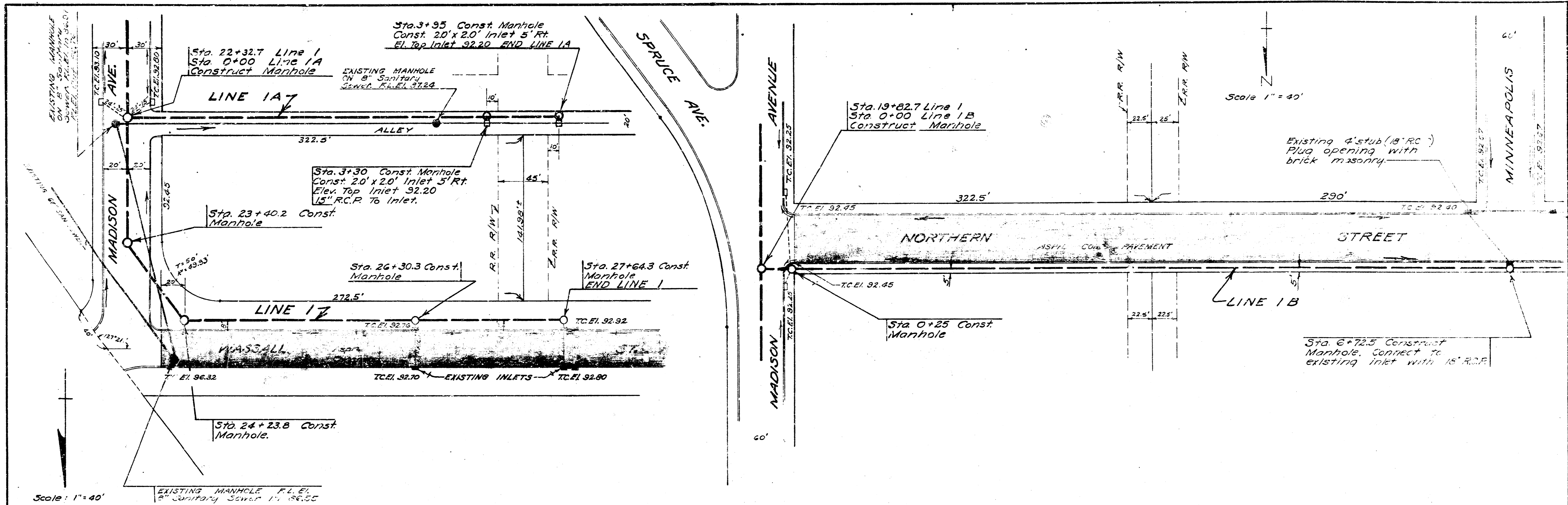
Sept. 1952





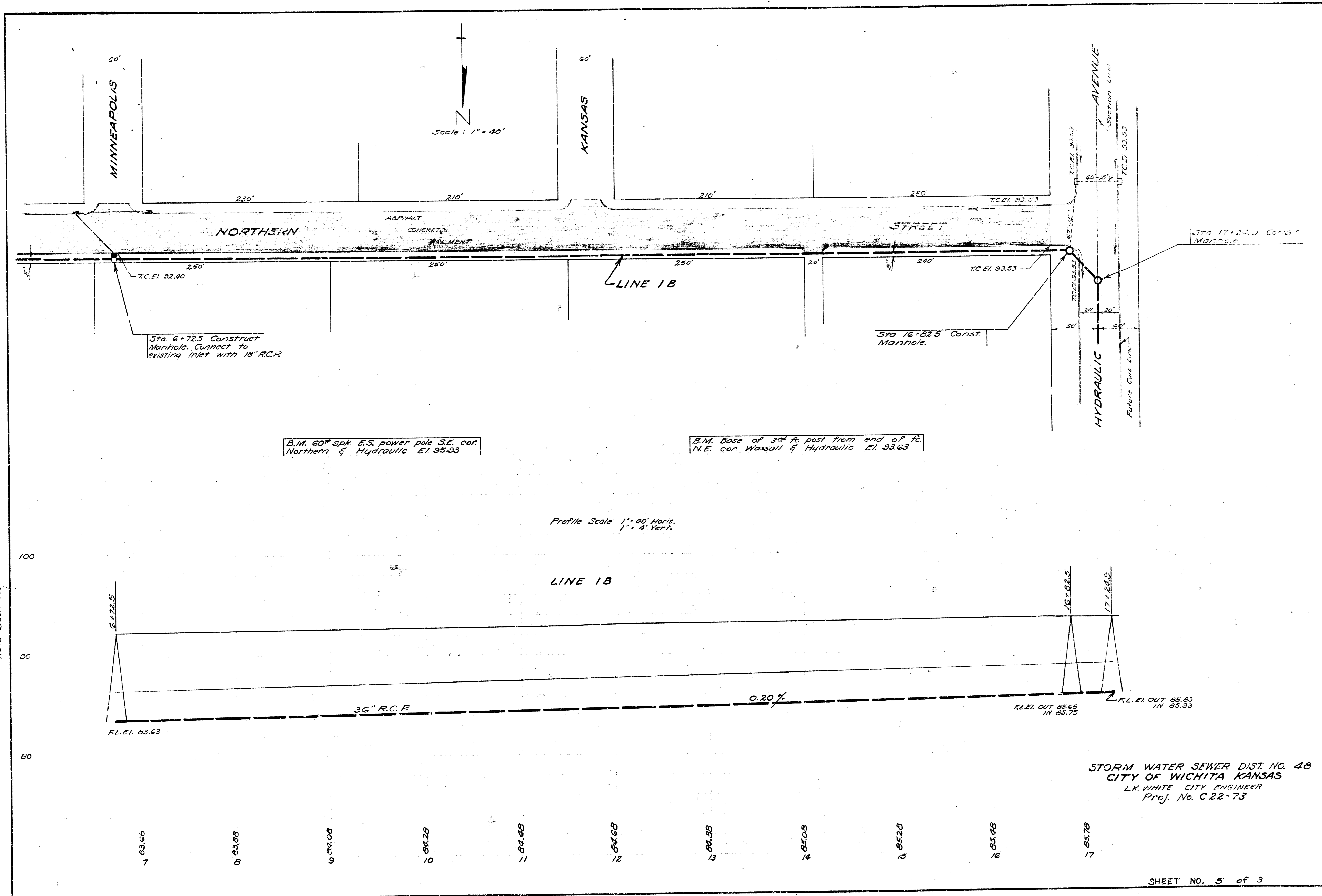
9-30-52
 Date
 Drawn by
 J.L.A.
 Checked by
 [Signature]
 Note Book No. []

STORM WATER SEWER DIST. NO. 48
 CITY OF WICHITA KANSAS
 L.K. WHITE CITY ENGINEER
 Proj. No. C22-73



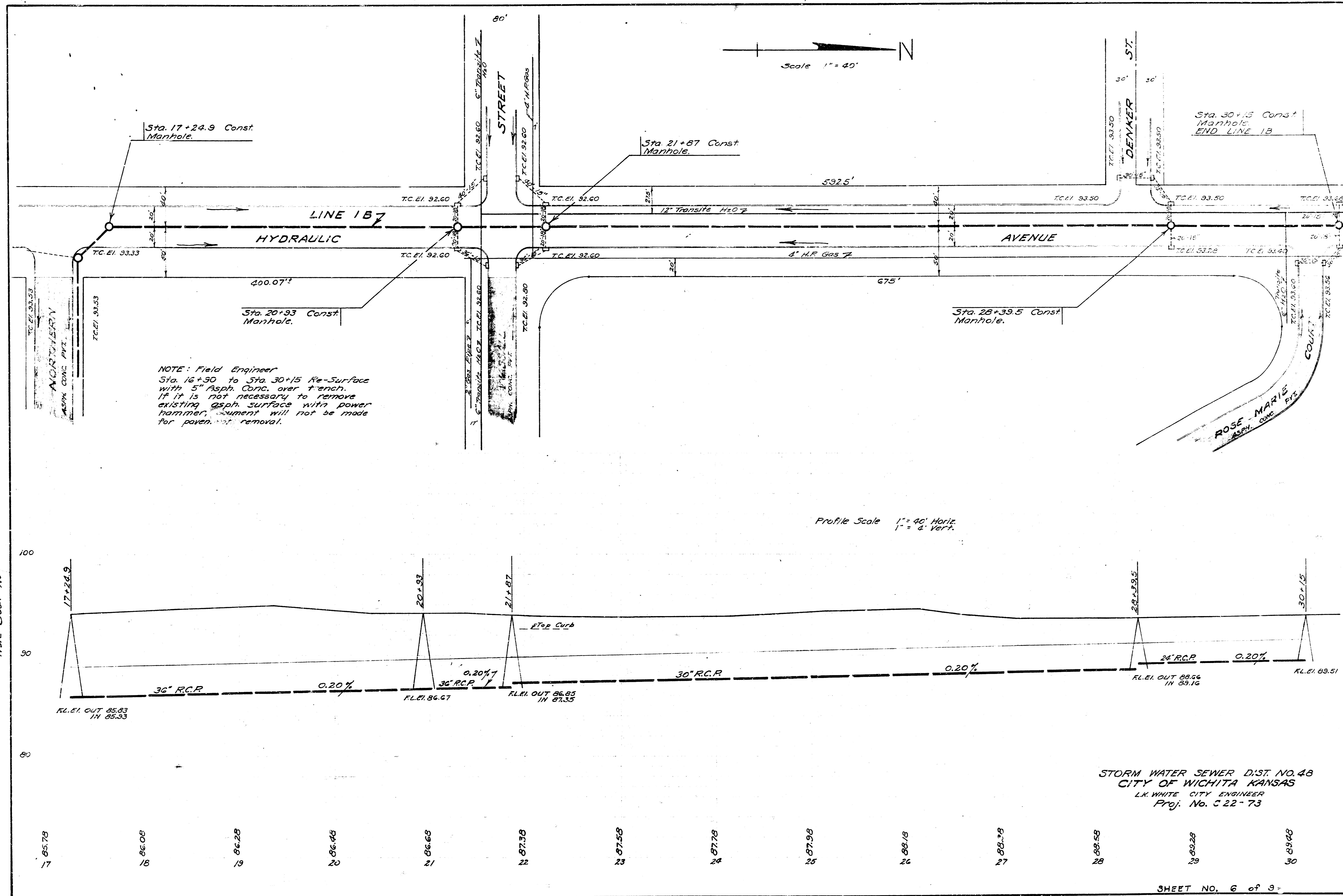
Date 9-30-52
 Drawn by J.L.A.
 Checked by
 Note Book #

STORM WATER SEWER DIST. NO. 4-B
 CITY OF WICHITA KANSAS
 L.K. WHITE CITY ENGINEER
 Proj. No. C 22-73



Date 9-30-52
 Drawn by J.L.A.
 Checked by
 Mark Beck 16

STORM WATER SEWER DIST. NO. 48
 CITY OF WICHITA KANSAS
 L.K. WHITE CITY ENGINEER
 Proj. No. C.22-73

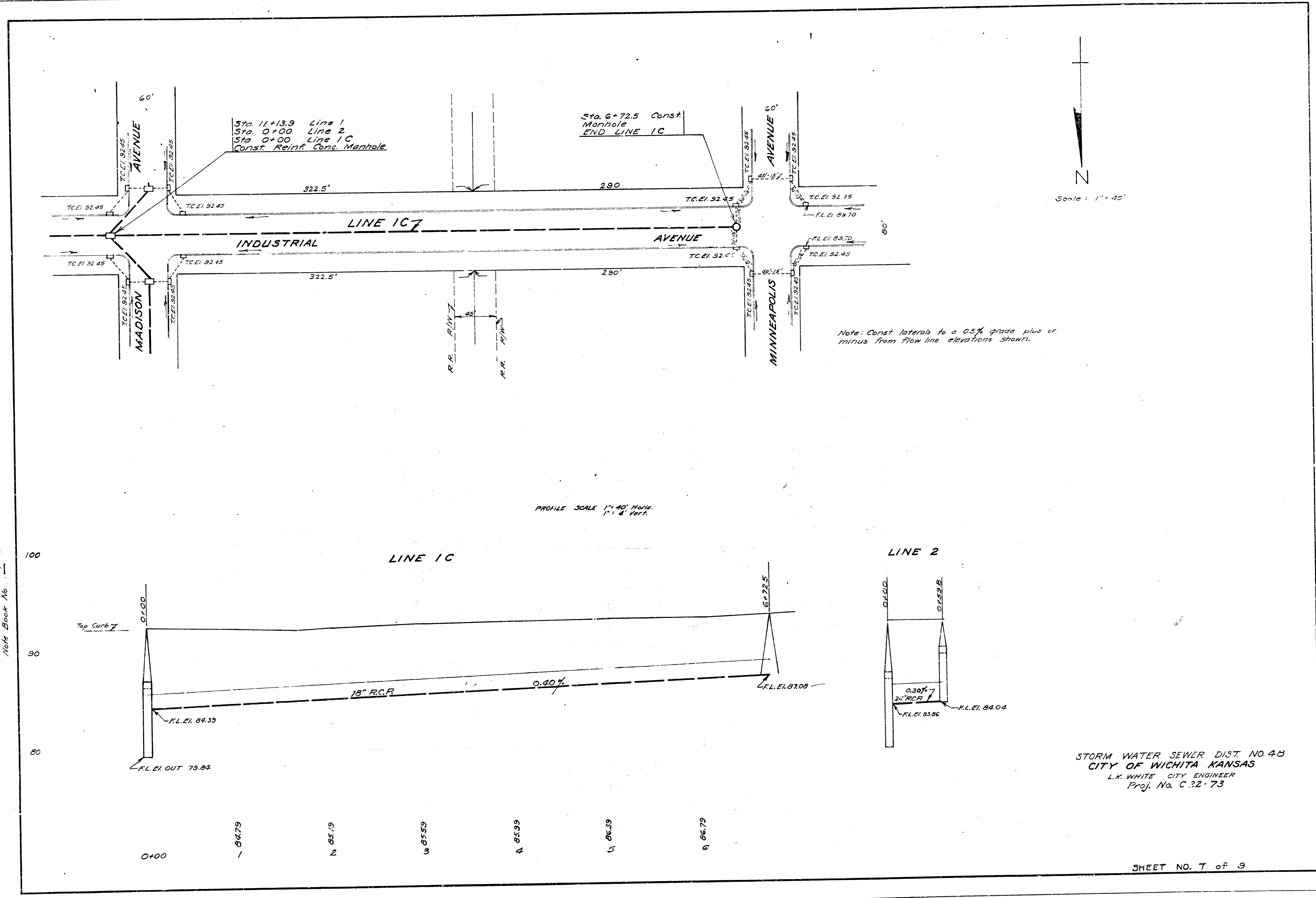


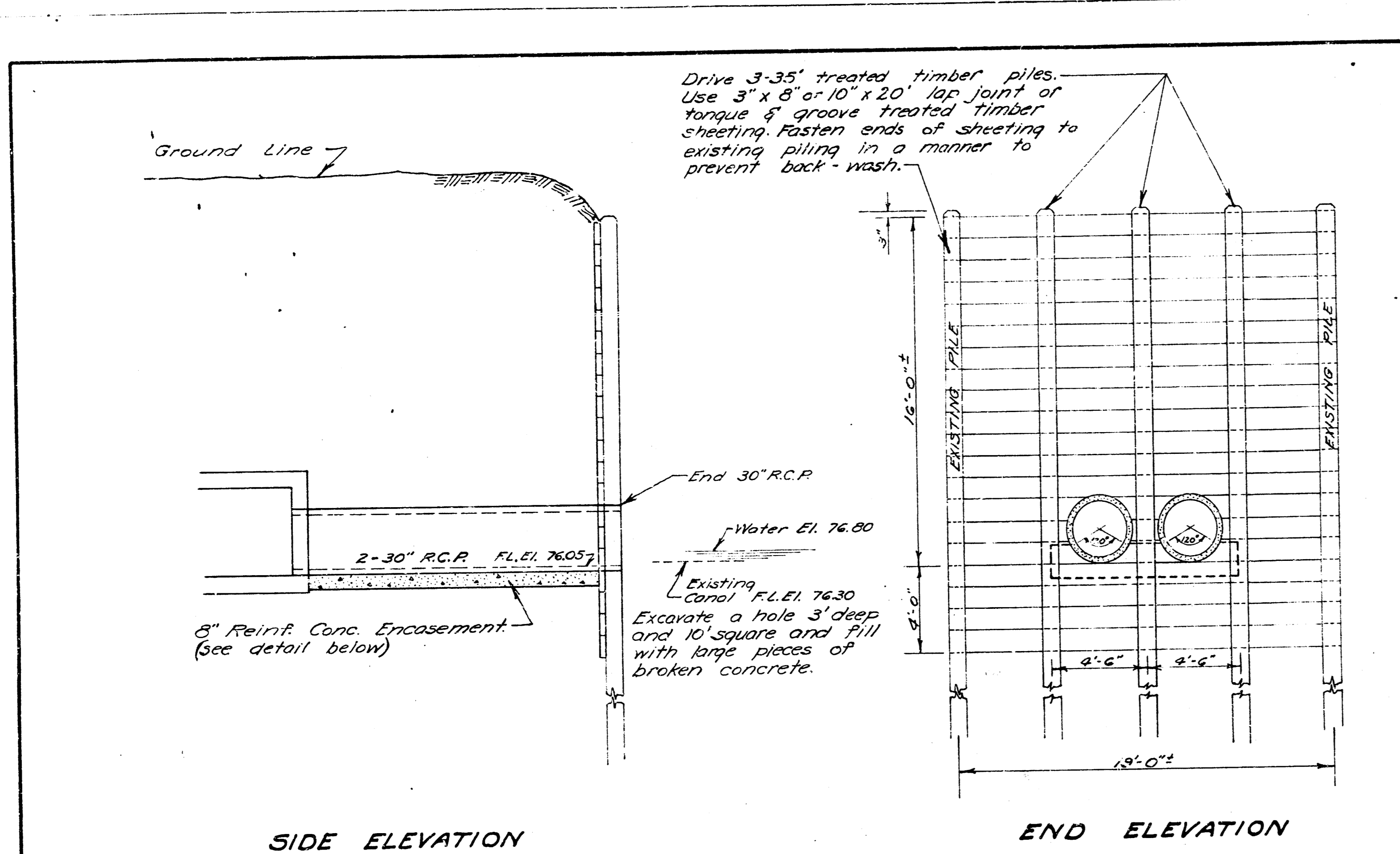
Date 9-30-52
 Drawn by J.L.A.
 Checked by A. B. B.

NOTE: Field Engineer
 Sta. 16+50 to Sta. 30+15 Re-Surface
 with 5" Asph. Conc. over trench.
 If it is not necessary to remove
 existing asph. surface with power
 hammer, cement will not be made
 for paving removal.

STORM WATER SEWER DIST. NO. 48
 CITY OF WICHITA, KANSAS
 L.K. WHITE, CITY ENGINEER
 Proj. No. C 22-73

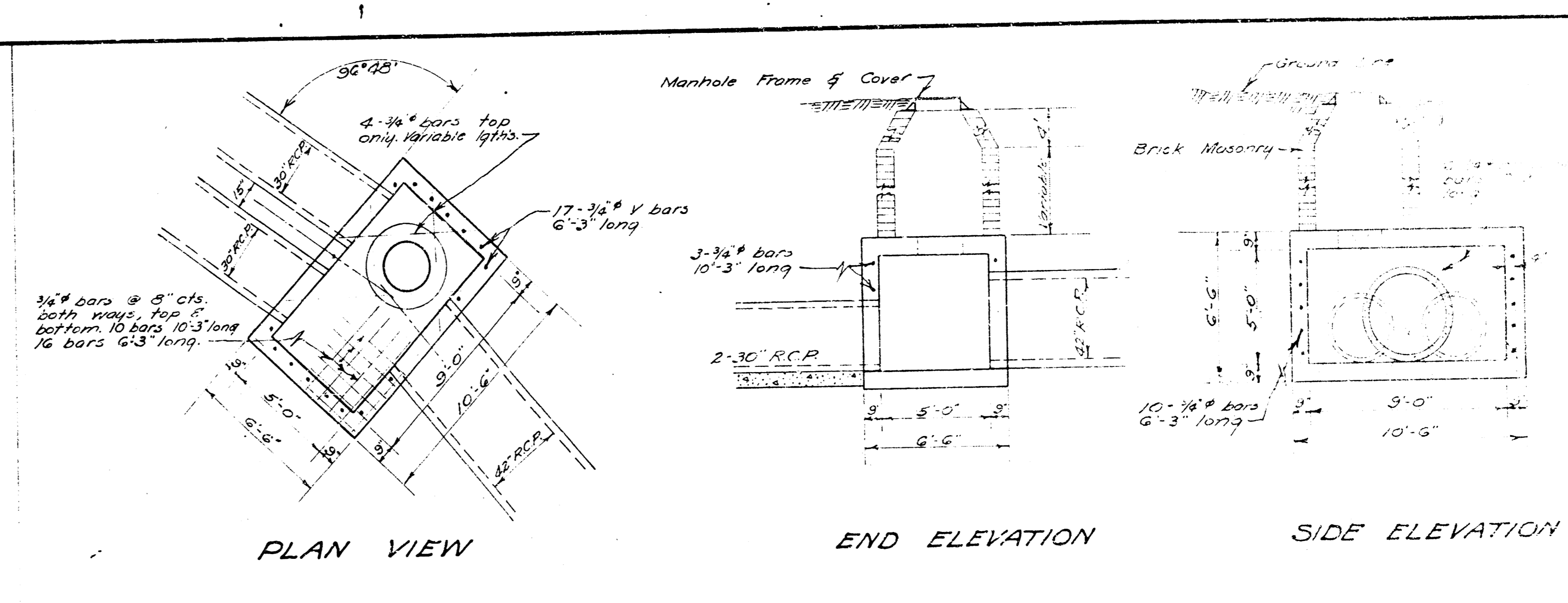
9-30-52
 Drawn by J.L.A.
 Checked by M.H.B.
 Note Book No. 1



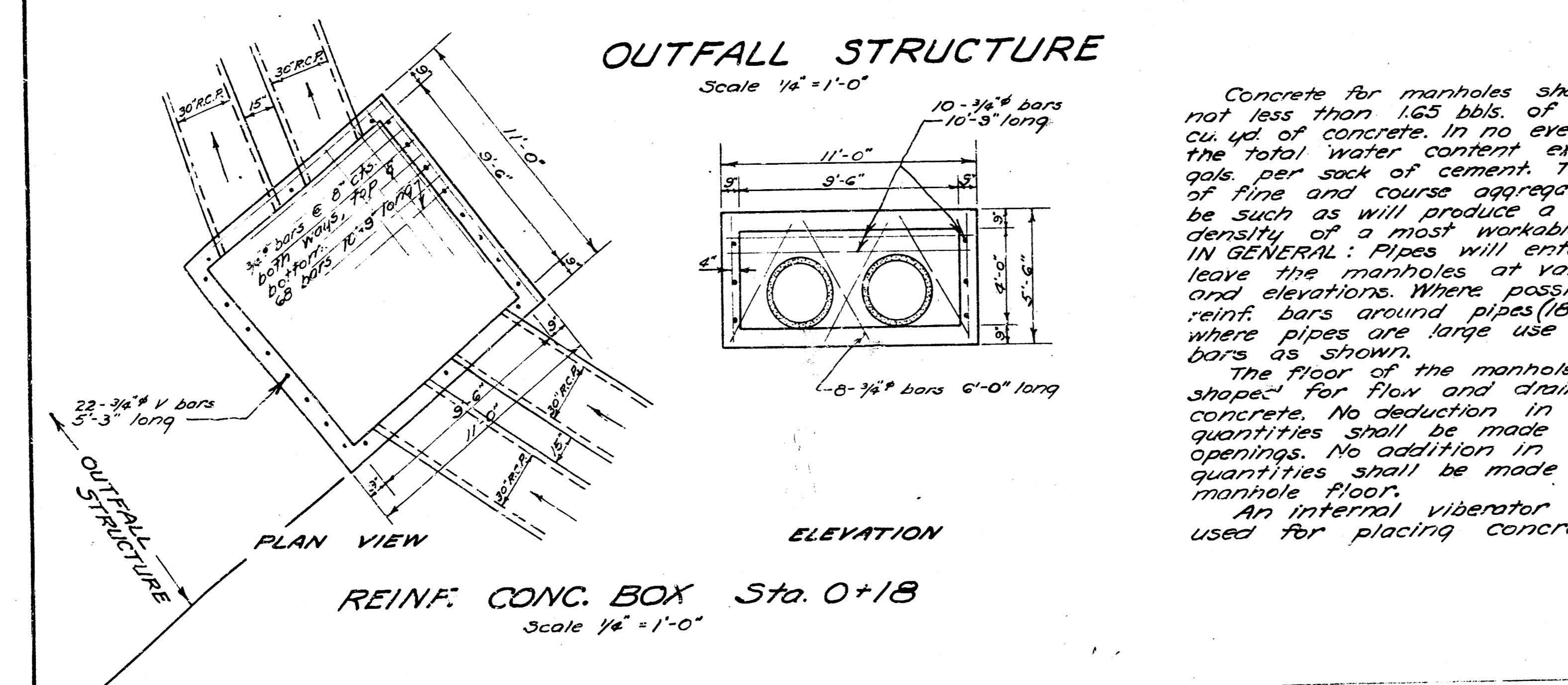


SIDE ELEVATION

END ELEVATION

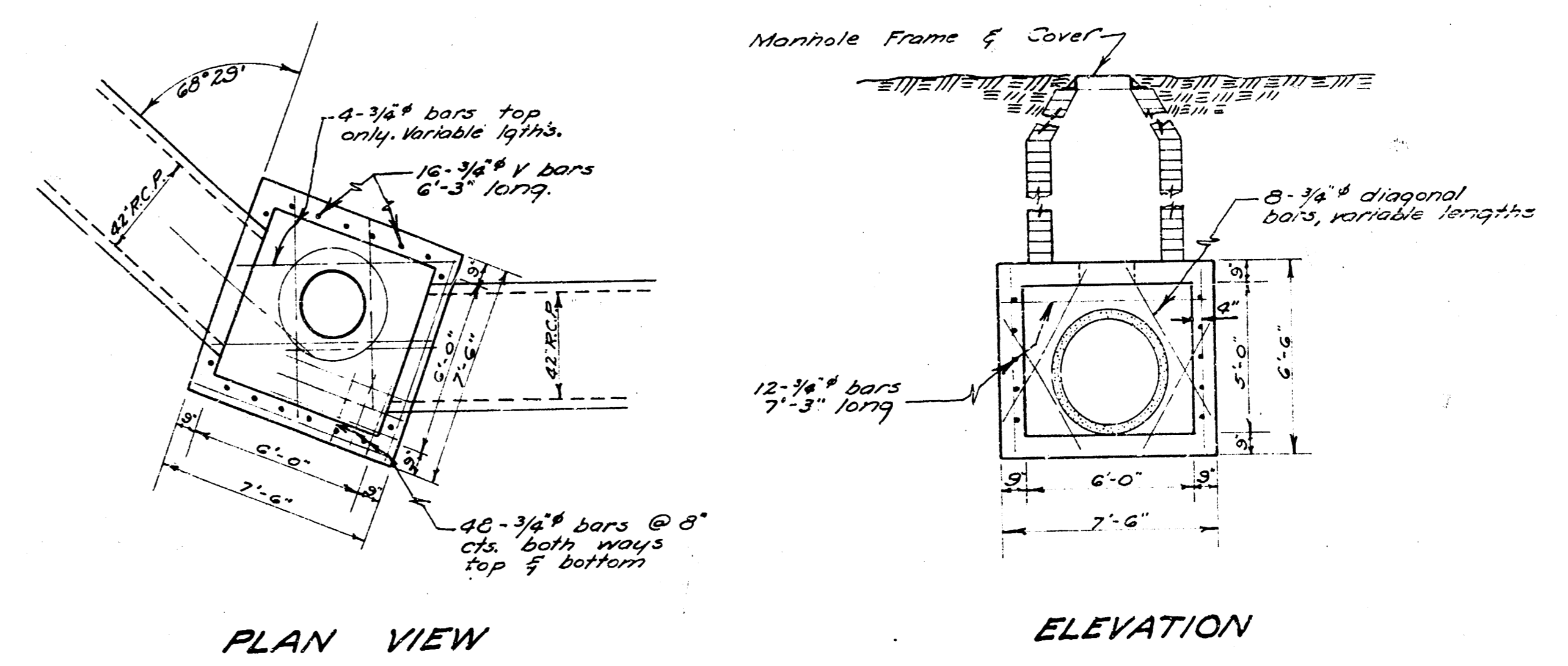


REINF. CONC. MANHOLE Sta. 1+80
Scale 1/4" = 1'-0"

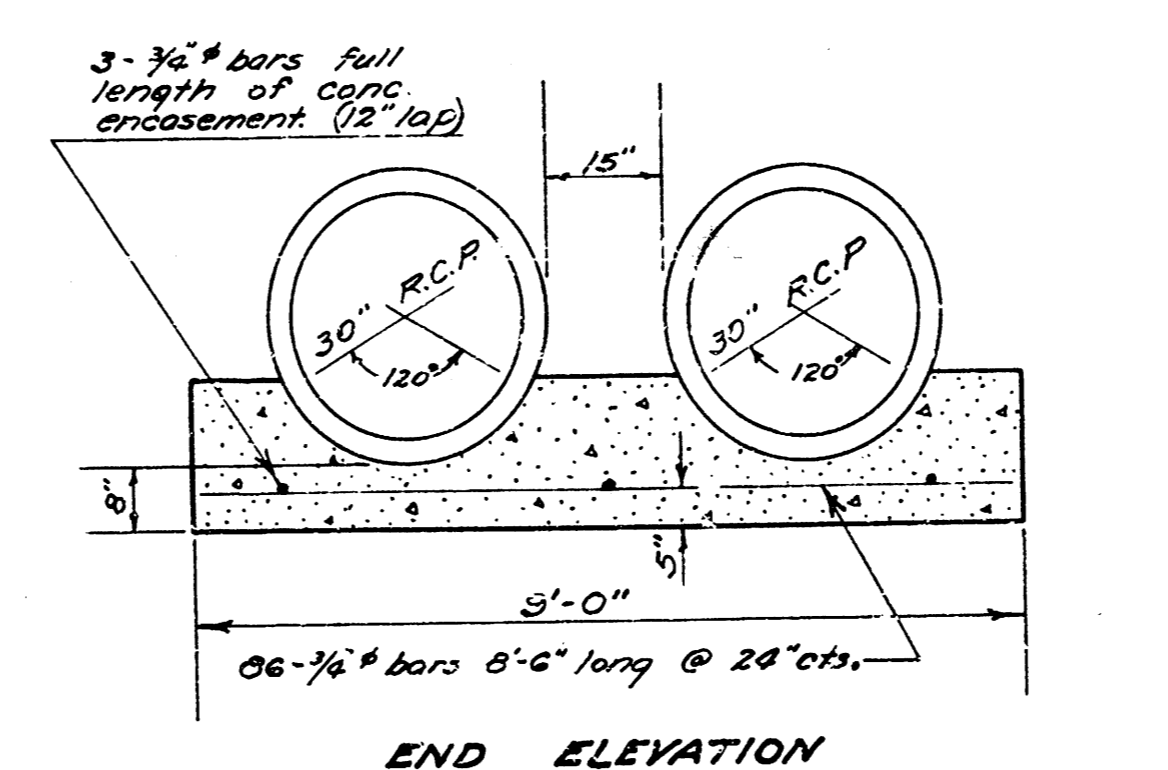
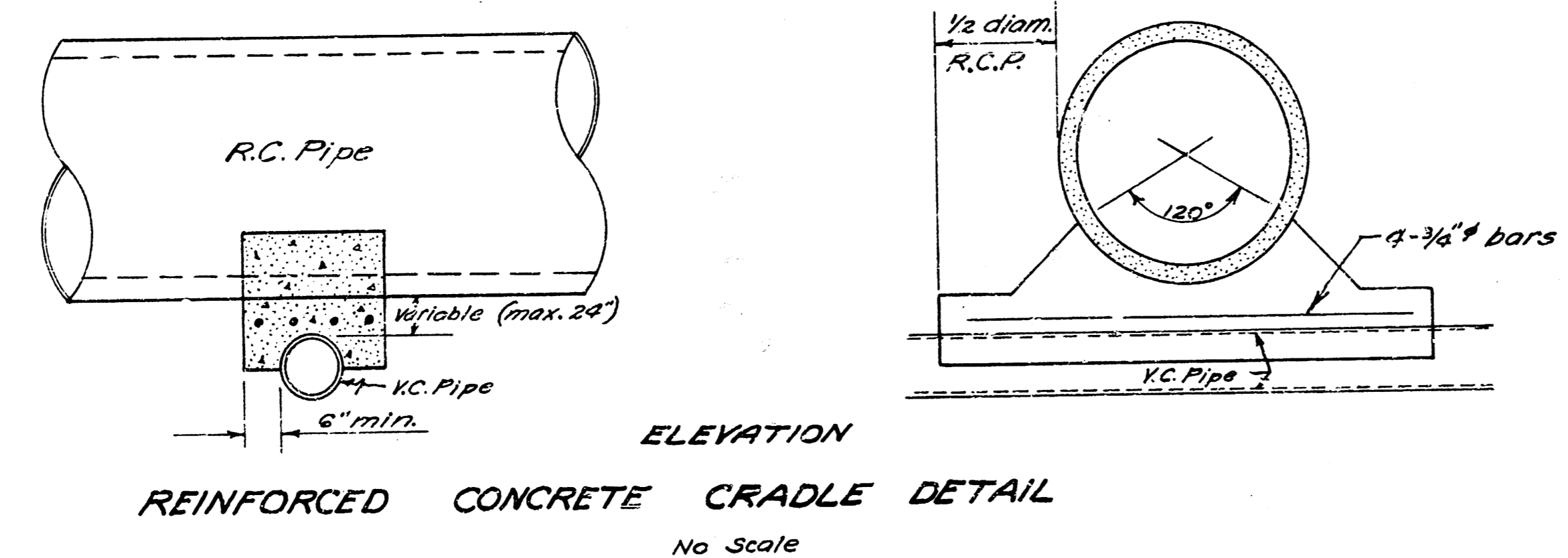


REINF. CONC. BOX Sta. 0+18
Scale 1/4" = 1'-0"

Concrete for manholes shall contain not less than 165 lbs. of cement per cu. yd. of concrete. In no event shall the total water content exceed 6.25 gals per sack of cement. The mixture of fine and coarse aggregate shall be such as will produce a maximum density of a most workable mixture. IN GENERAL: Pipes will enter and leave the manholes at various angles and elevations. Where possible bend reinf. bars around pipes (18" diam. or less) where pipes are large use 3/8" diagonal bars as shown. The floor of the manhole is to be shaped for flow and drainage with concrete. No deduction in concrete quantities shall be made for pipe openings. No addition in concrete quantities shall be made for shaping manhole floor. An internal vibrator shall be used for placing concrete.

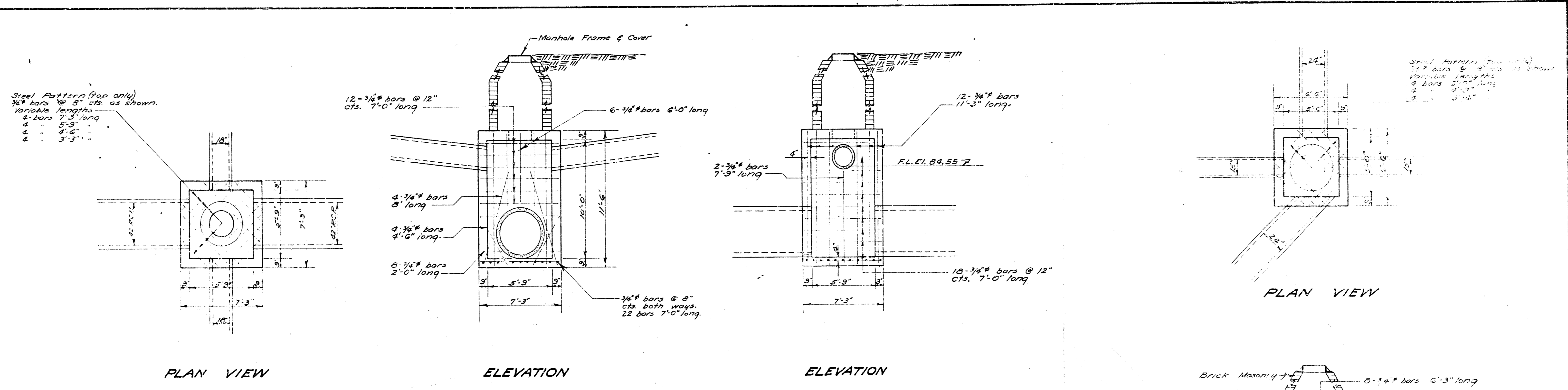


REINF. CONC. MANHOLE Sta. 2+95.4
Scale 1/4" = 1'-0"

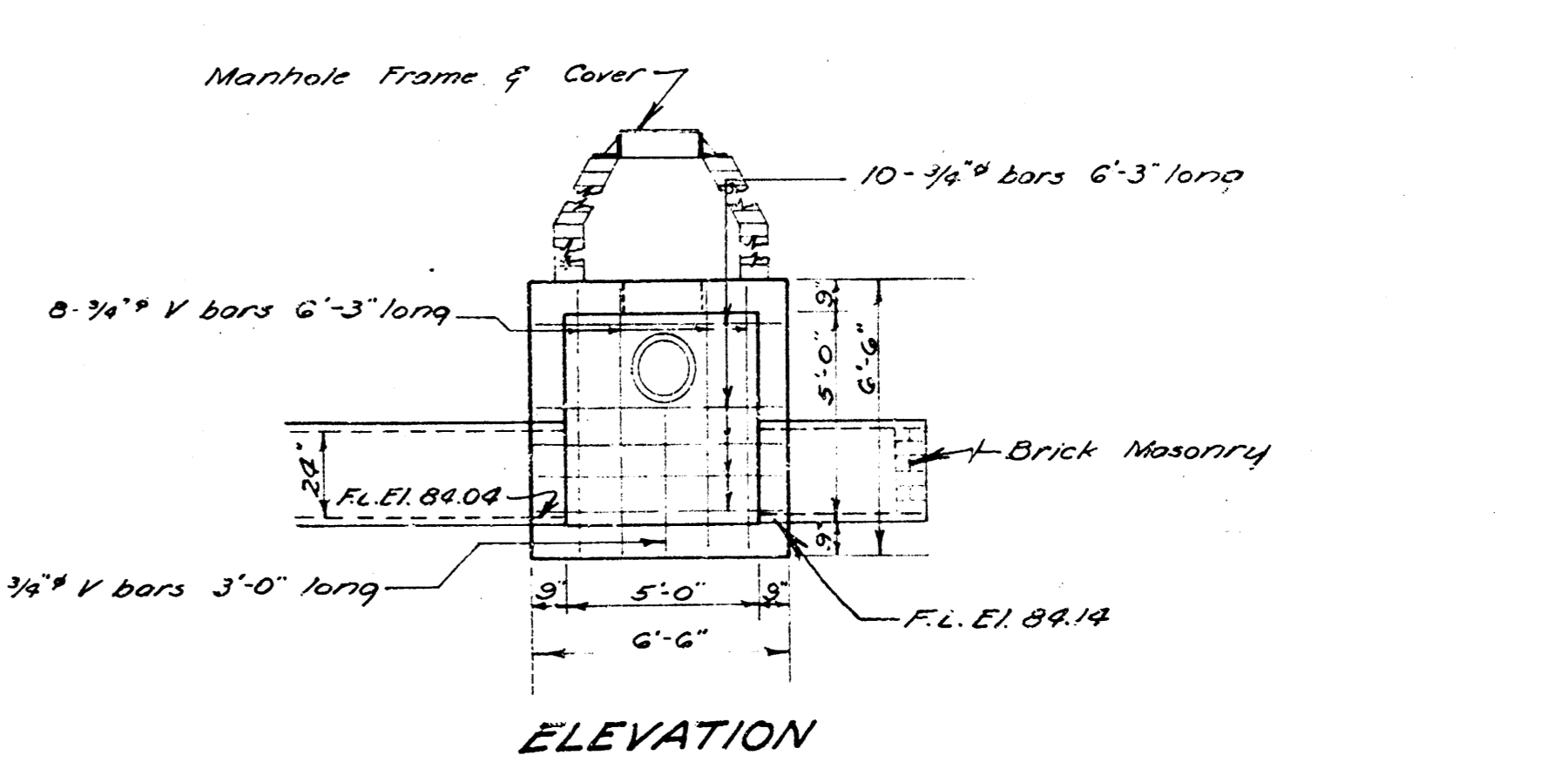
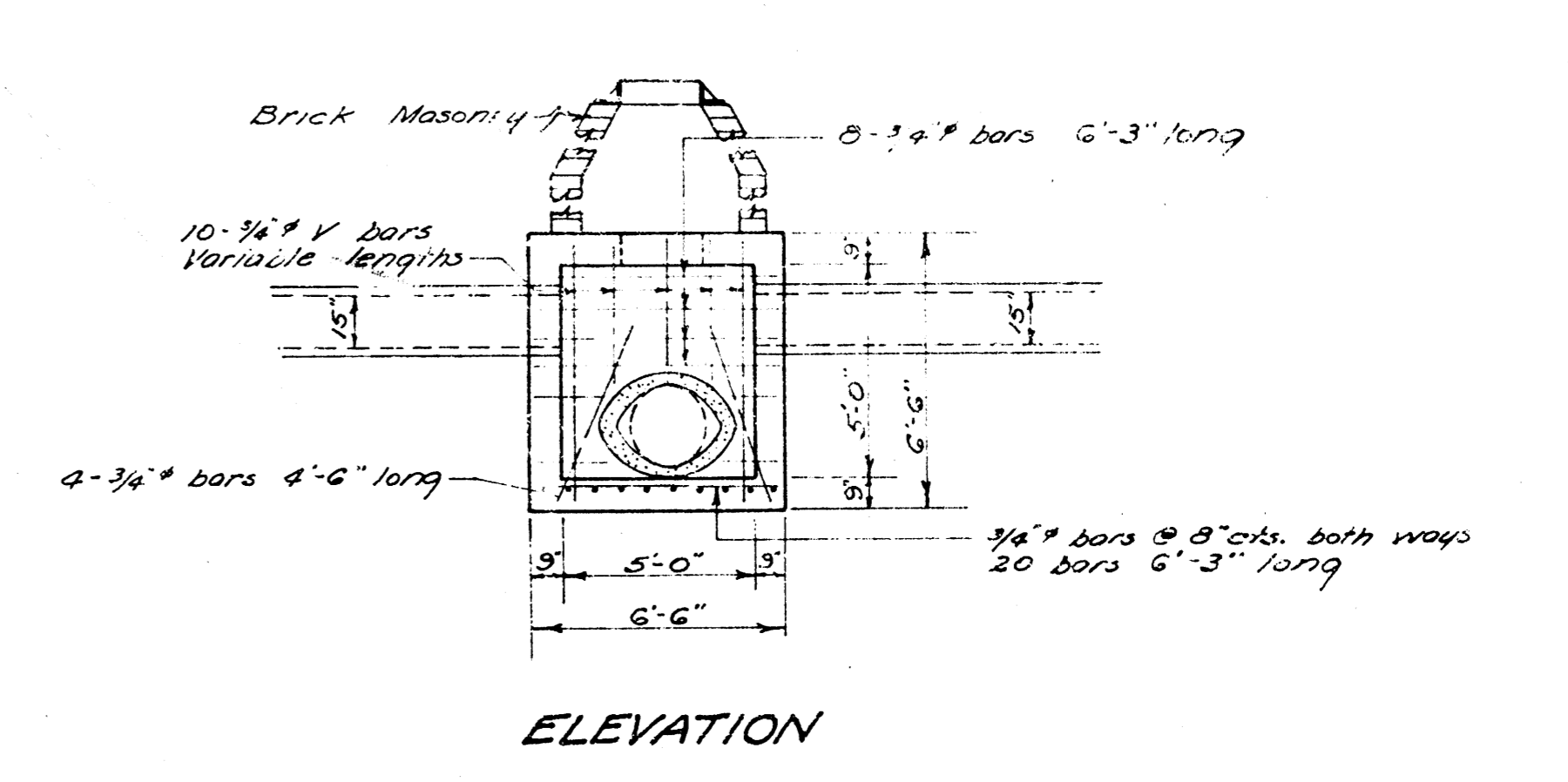
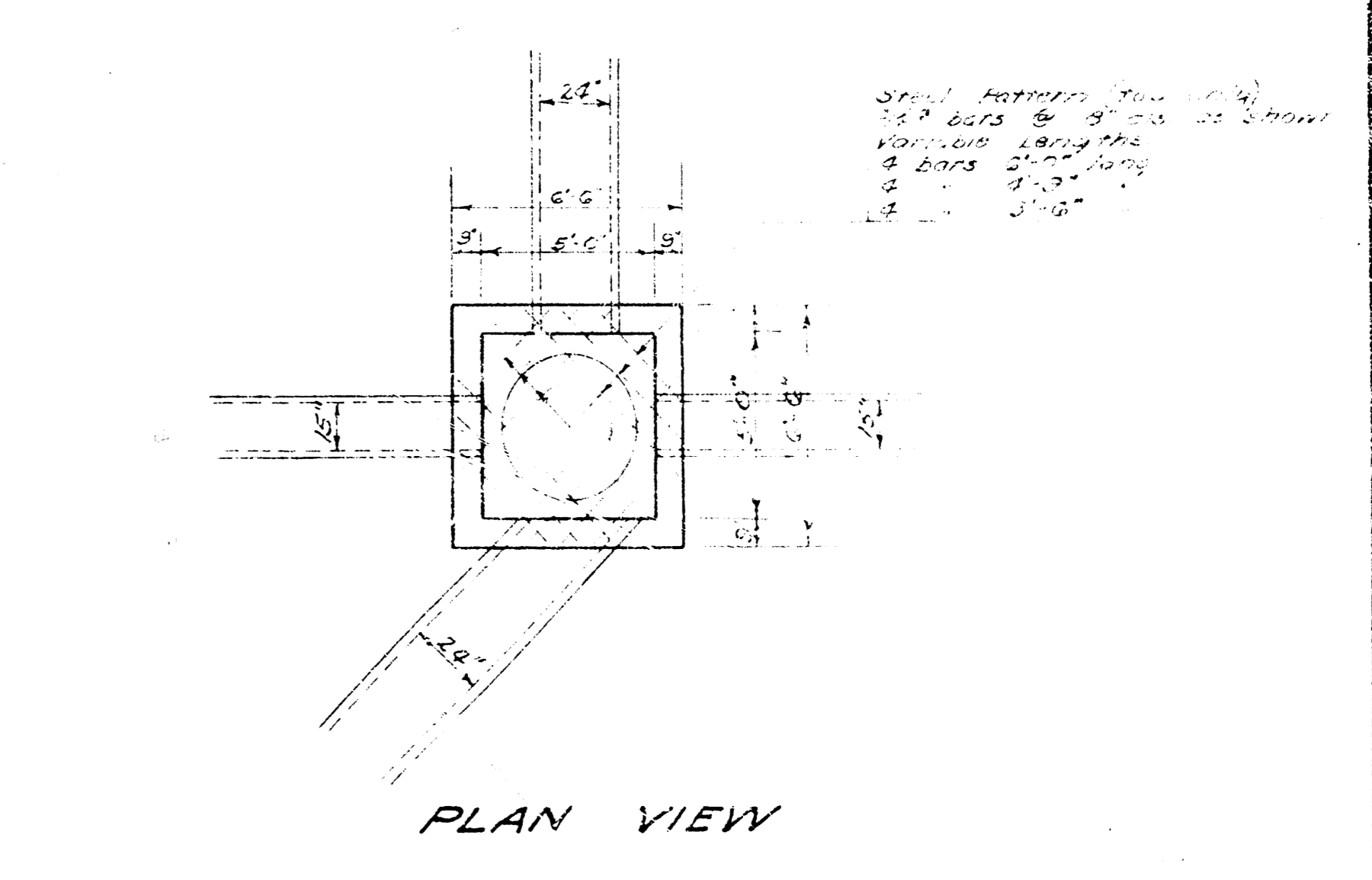


REINF. CONC. ENCASUREMENT DETAIL
Sta. 0+01 to Manhole Sta. 1+80

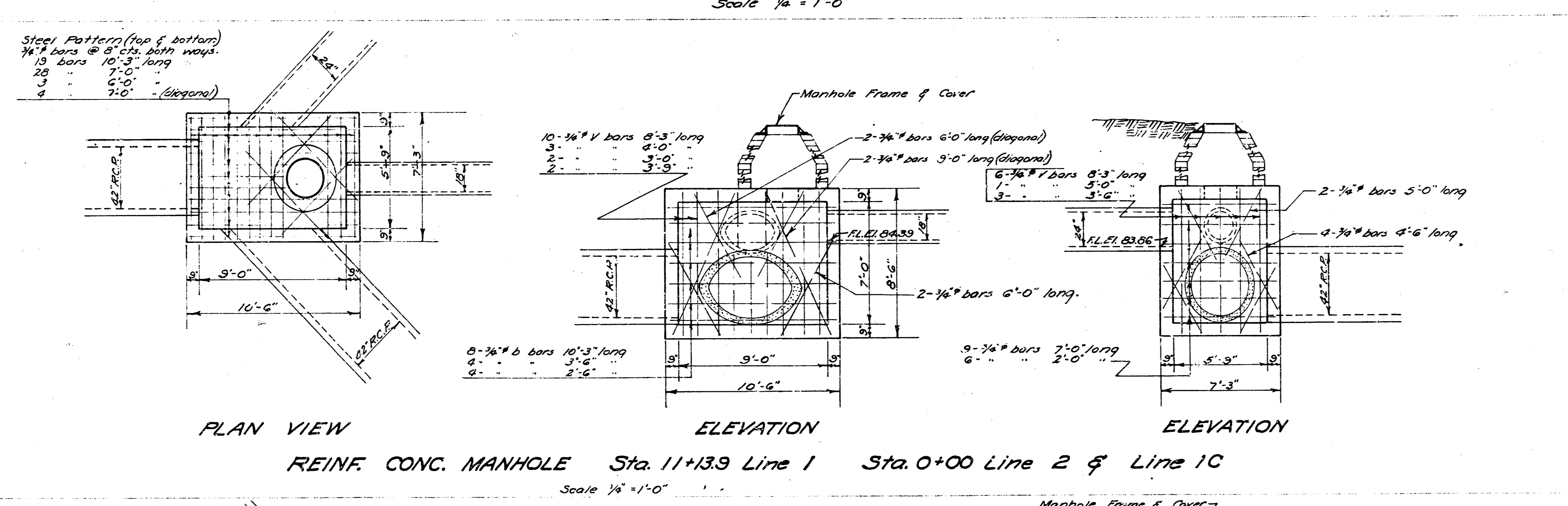
STORM WATER SEWER DIST. NO. 48
CITY OF WICHITA KANSAS
L. K. WHITE CITY ENGINEER
Proj. No. C22-73



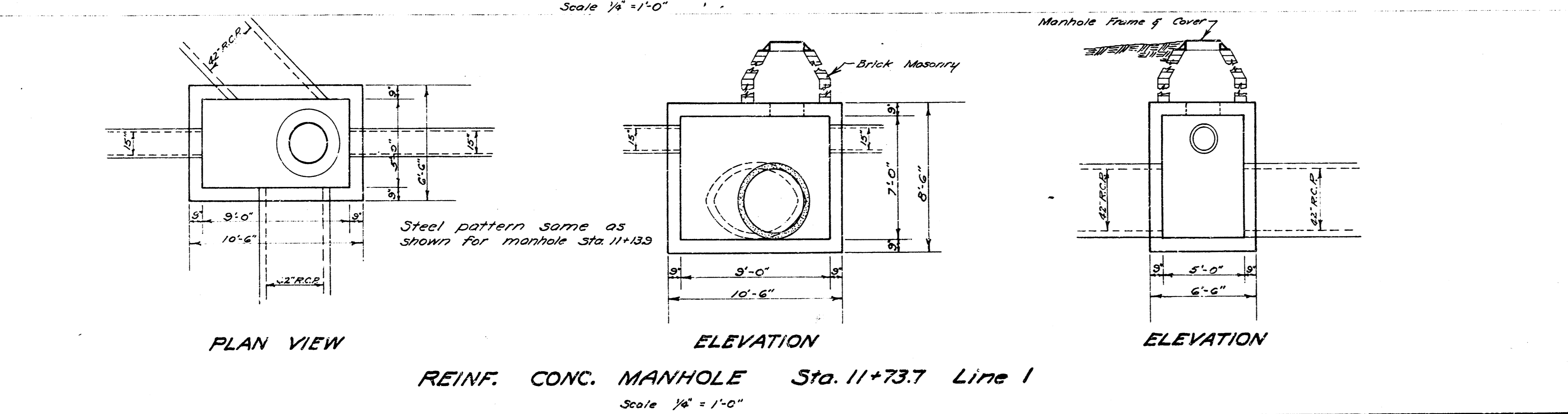
REINFORCED CONCRETE MANHOLE Sta. 4+96.4 Line 1
 Scale 1/2" = 1'-0"



REINFORCED CONCRETE MANHOLE Sta. 0+59.8 Line 2
 Scale 1/2" = 1'-0"



REINFORCED CONCRETE MANHOLE Sta. 11+13.9 Line 1 Sta. 0+00 Line 2 & Line 1C
 Scale 1/2" = 1'-0"



REINFORCED CONCRETE MANHOLE Sta. 11+73.7 Line 1
 Scale 1/2" = 1'-0"

STORM WATER SEWER DIST. NO. 48
 CITY OF WICHITA KANSAS
 L.K. WHITE CITY ENGINEER
 Proj. No. C.22-73