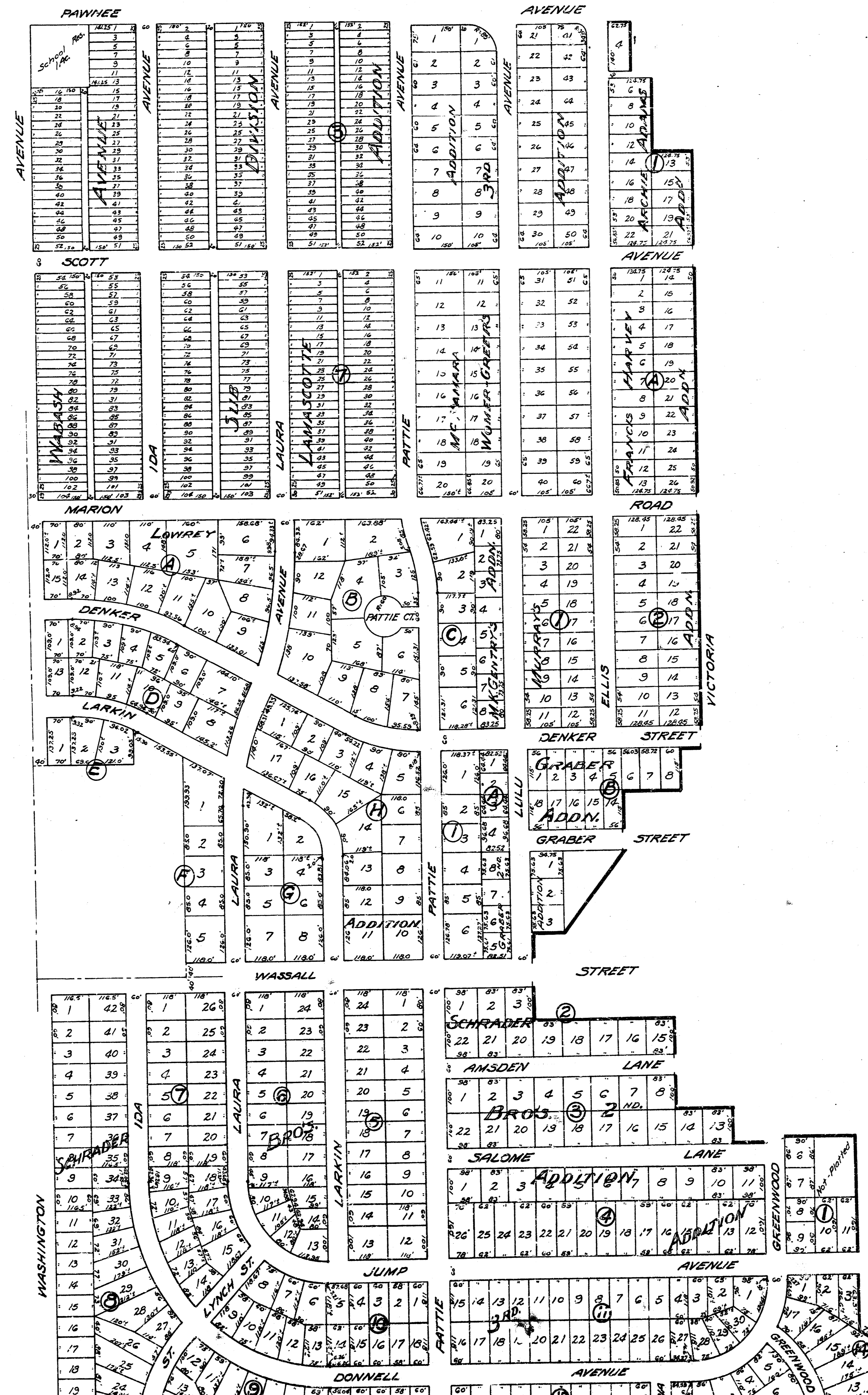


BENEFIT DISTRICT
STORM WATER SEWER DISTRICT NO. 49
CITY OF WICHITA KANS.

PROJECT NO. C22-76

DATE, OCT. 1952



STORM WATER SEWER DISTRICT NO. 49

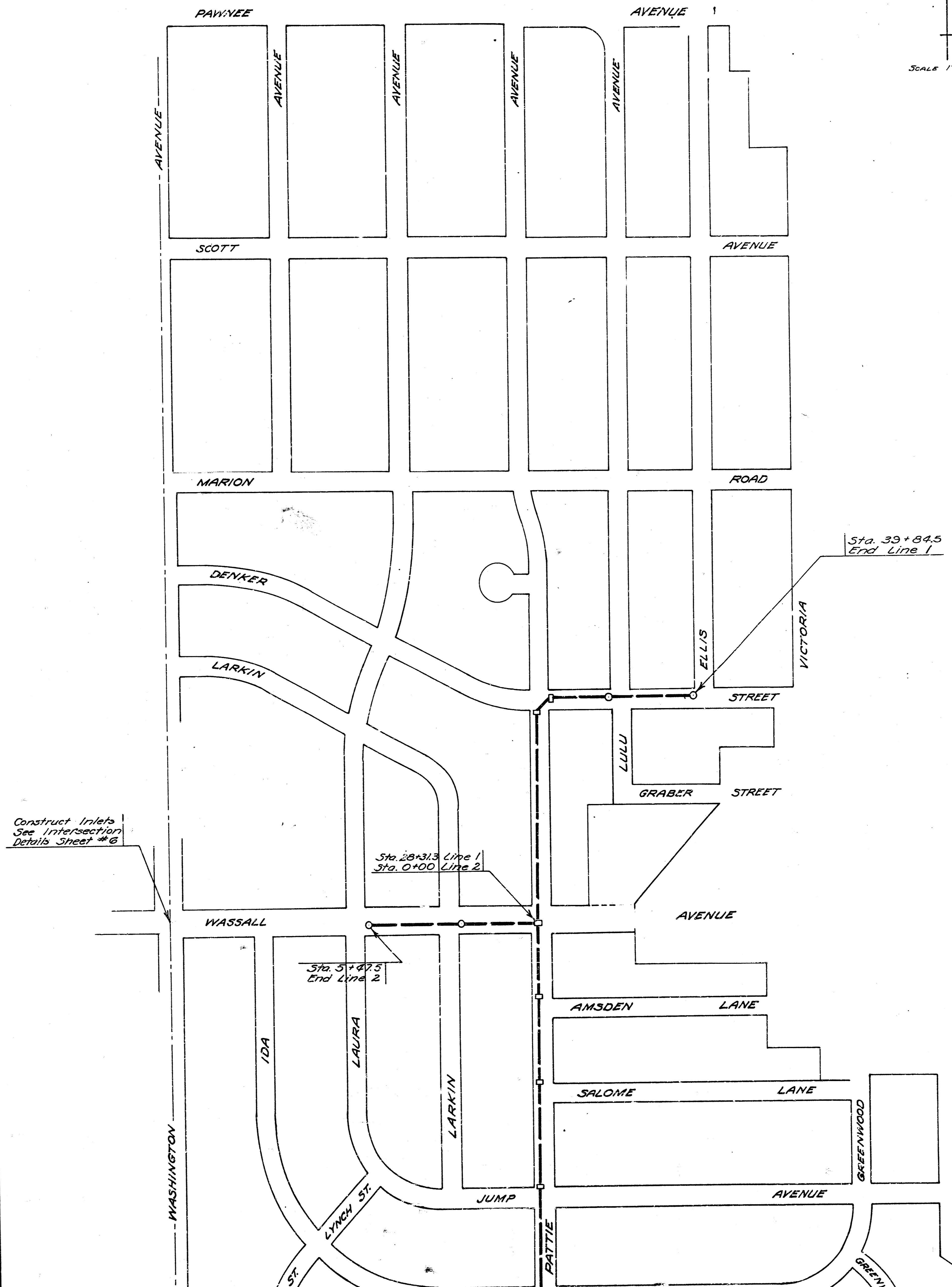
CITY OF WICHITA KANS.

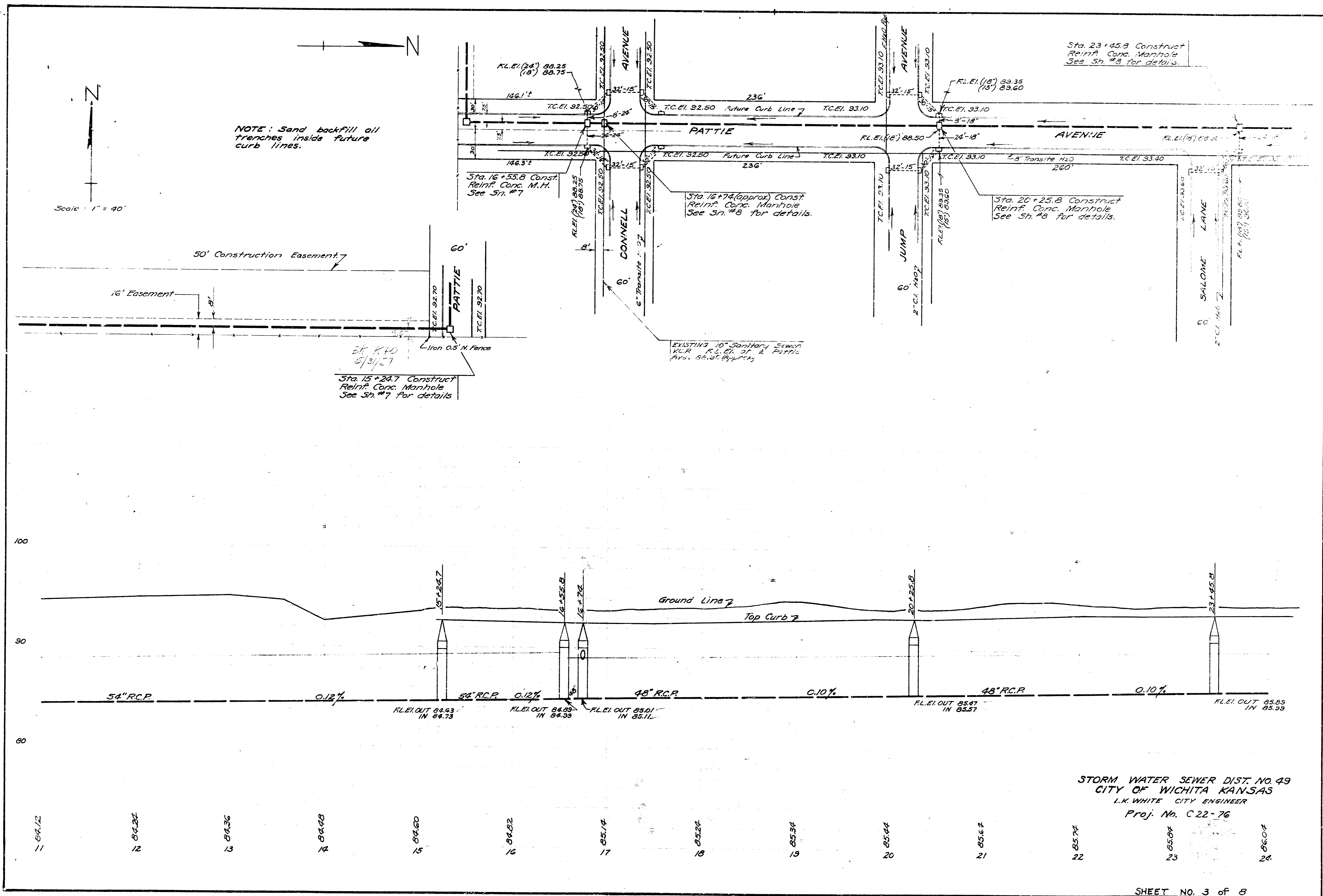
L.K. WHITE CITY ENGINEER

PROJ. NO. C 22-76

SHEET NO. 1 OF 8 SHEETS

DATE: OCTOBER 1952



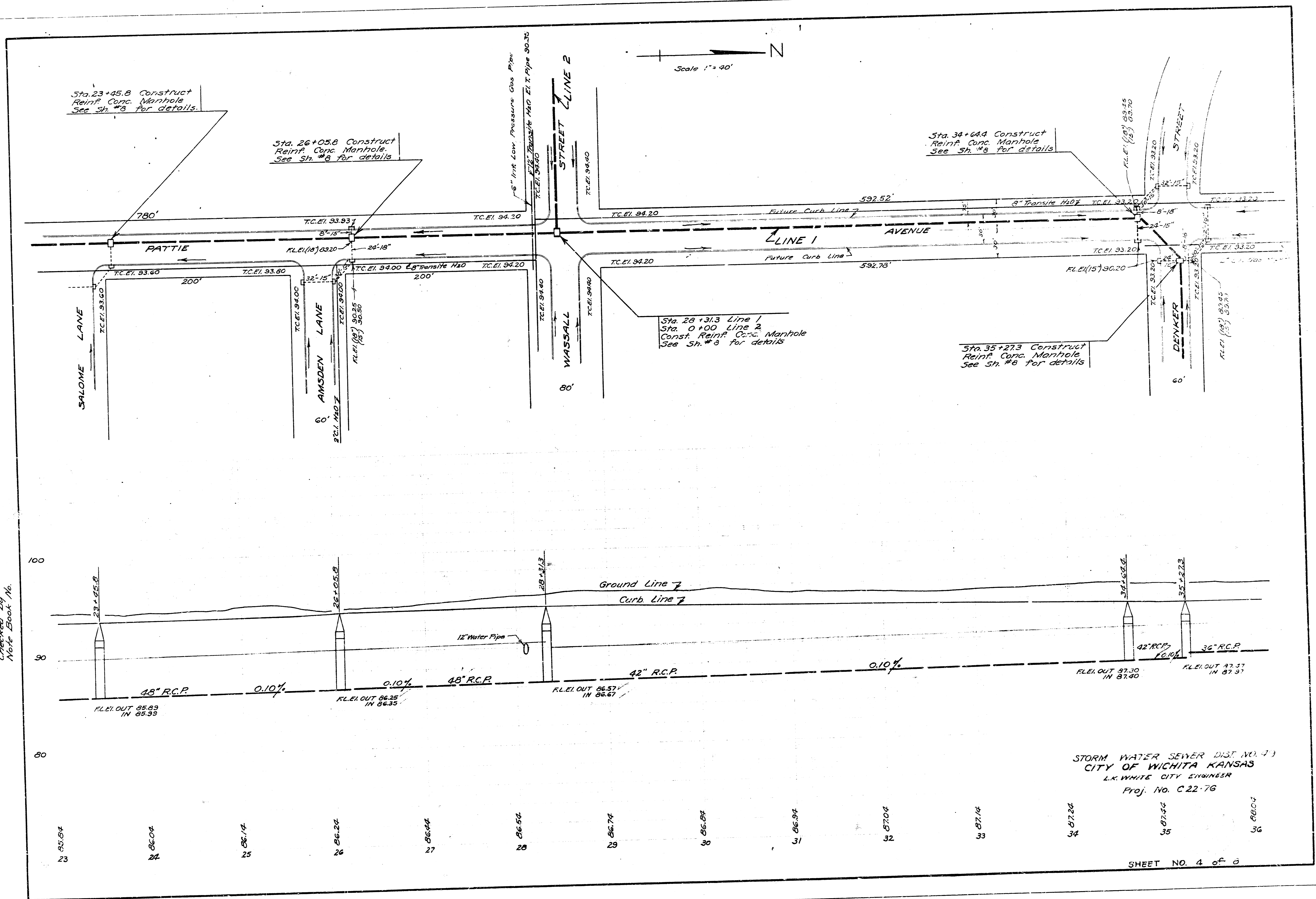


Scale: 1" = 40'

NOTE: Sand backfill all trenches inside future curb lines.

Date Oct. 1952
 Drawn by J.L.A.
 Checked by Note Book No. S-13

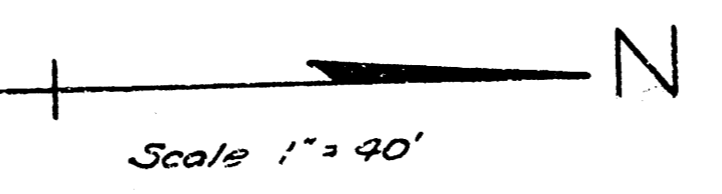
STORM WATER SEWER DIST. NO. 49
 CITY OF WICHITA KANSAS
 I.K. WHITE CITY ENGINEER
 Proj. No. C 22-76



Sta. 23+55.8 Construct
Reinf. Conc. Manhole
See Sh. #8 for details.

Sta. 26+05.8 Construct
Reinf. Conc. Manhole
See Sh. #8 for details.

Sta. 34+64.4 Construct
Reinf. Conc. Manhole
See Sh. #8 for details.



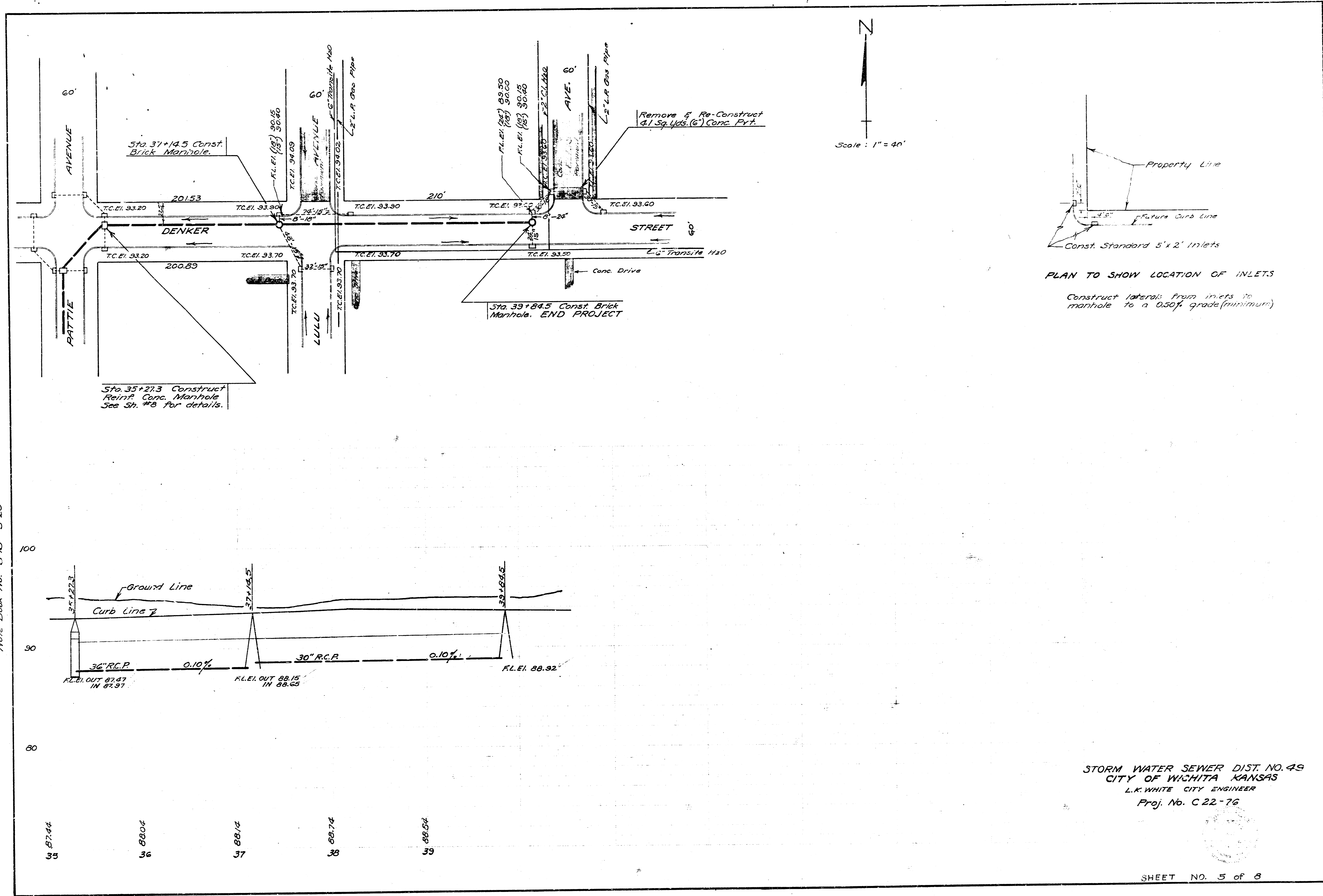
Sta. 28+31.3 Line 1
Sta. 0+00 Line 2
Const. Reinf. Conc. Manhole
See Sh. #8 for details.

Sta. 35+27.3 Construct
Reinf. Conc. Manhole
See Sh. #8 for details.

Date Oct. 1957
Drawn by J.L.A.
Checked by
Note Book No.

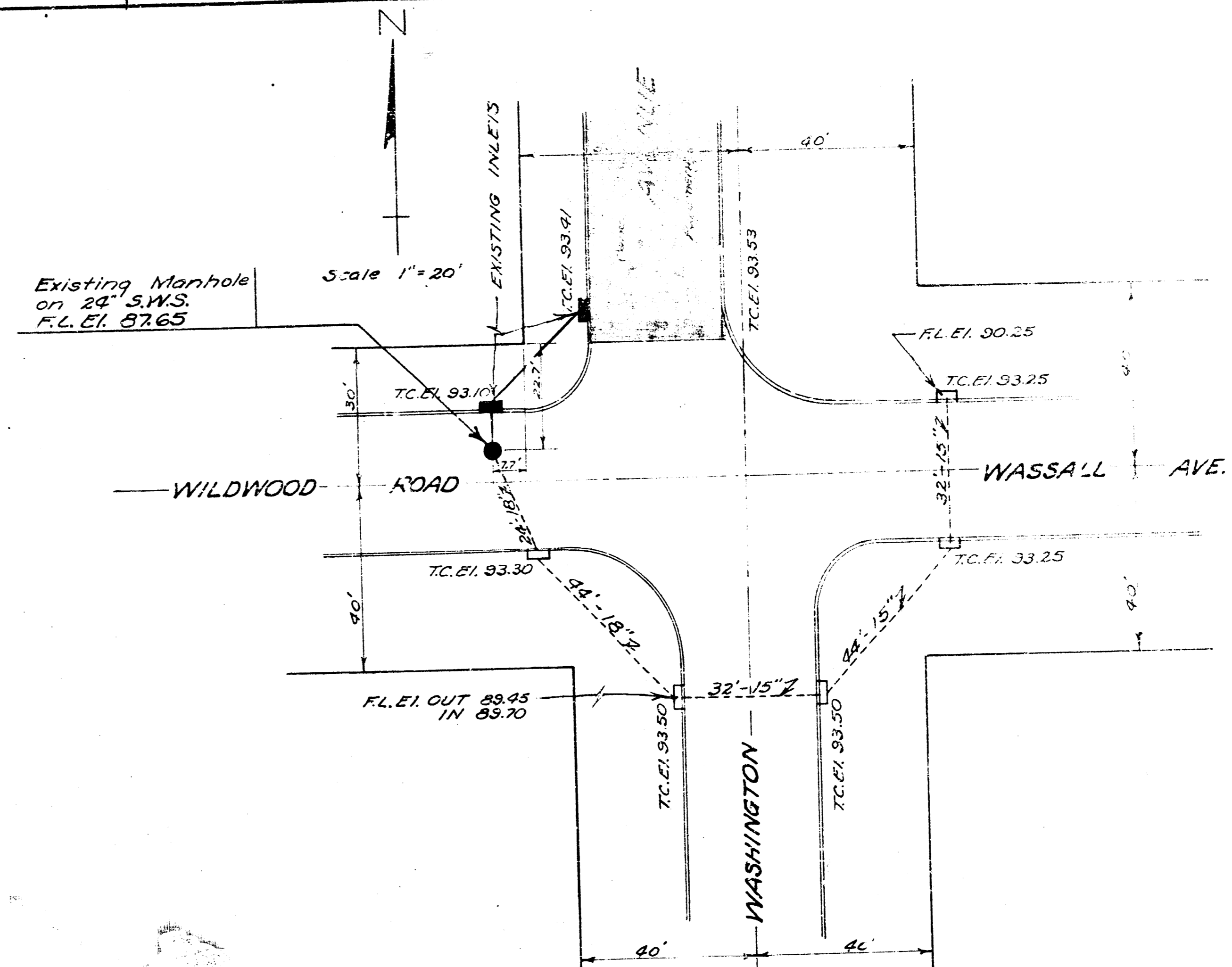
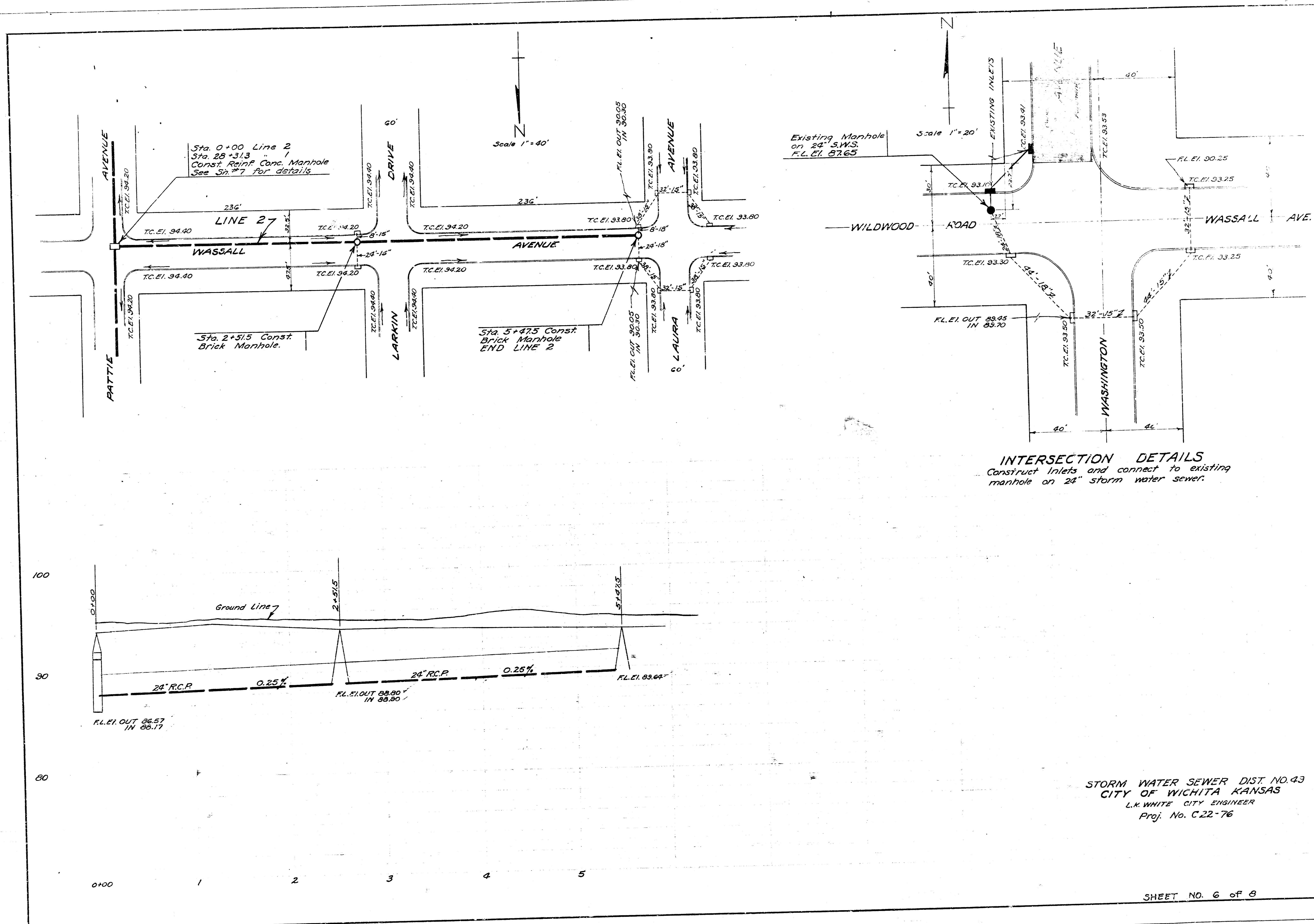
STORM WATER SEWER DIST. NO. 73
CITY OF WICHITA KANSAS
L.R. WHITE CITY ENGINEER
Proj. No. C 22-76

23 85.84 24 86.04 25 86.14 26 86.24 27 86.44 28 86.54 29 86.74 30 86.84 31 86.94 32 87.04 33 87.14 34 87.24 35 87.44 36 88.04

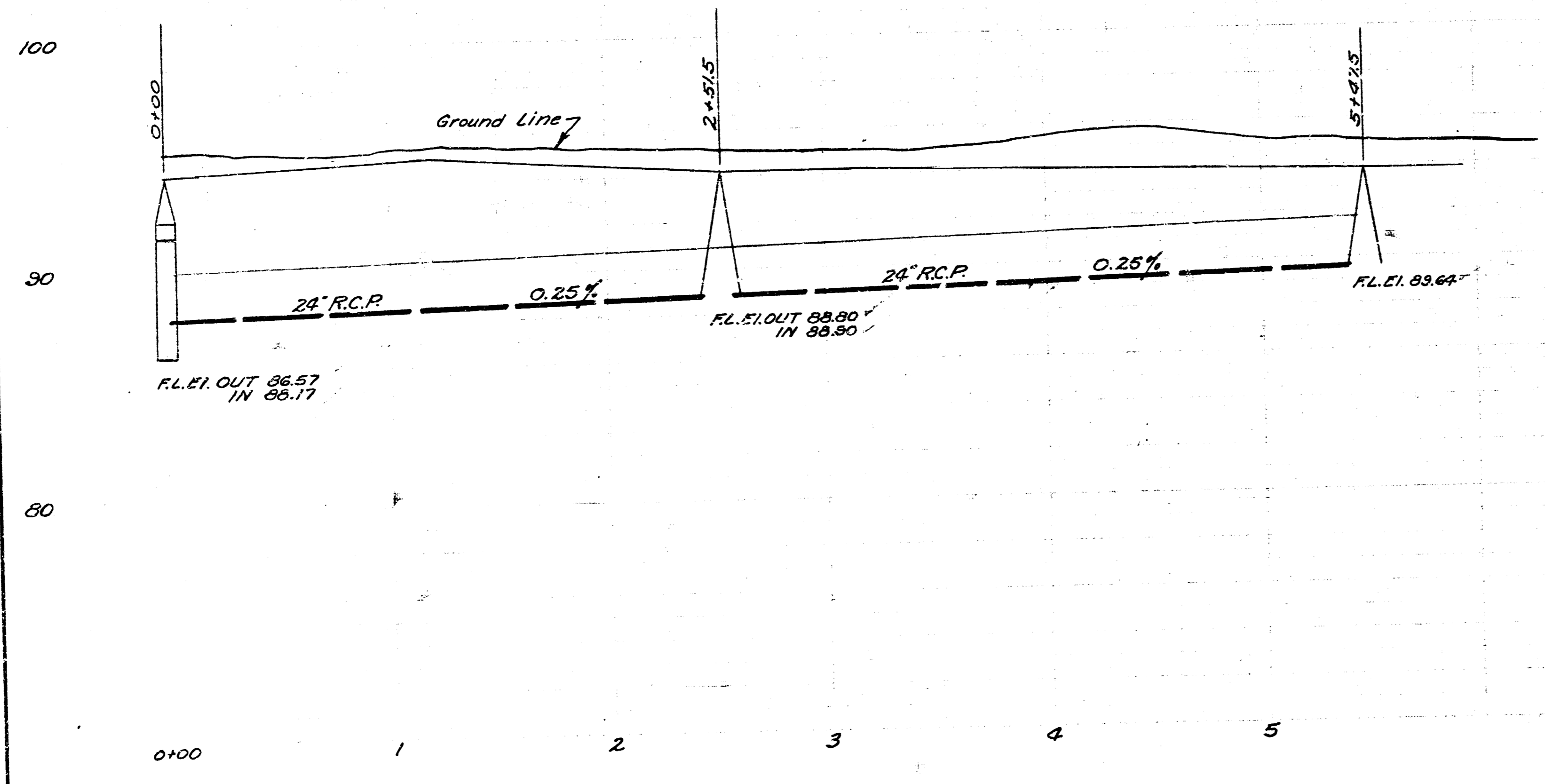


Date Oct. 1952
 Drawn by J.C.H.
 Checked by N.O.S.
 Book No. 5-13 S-20

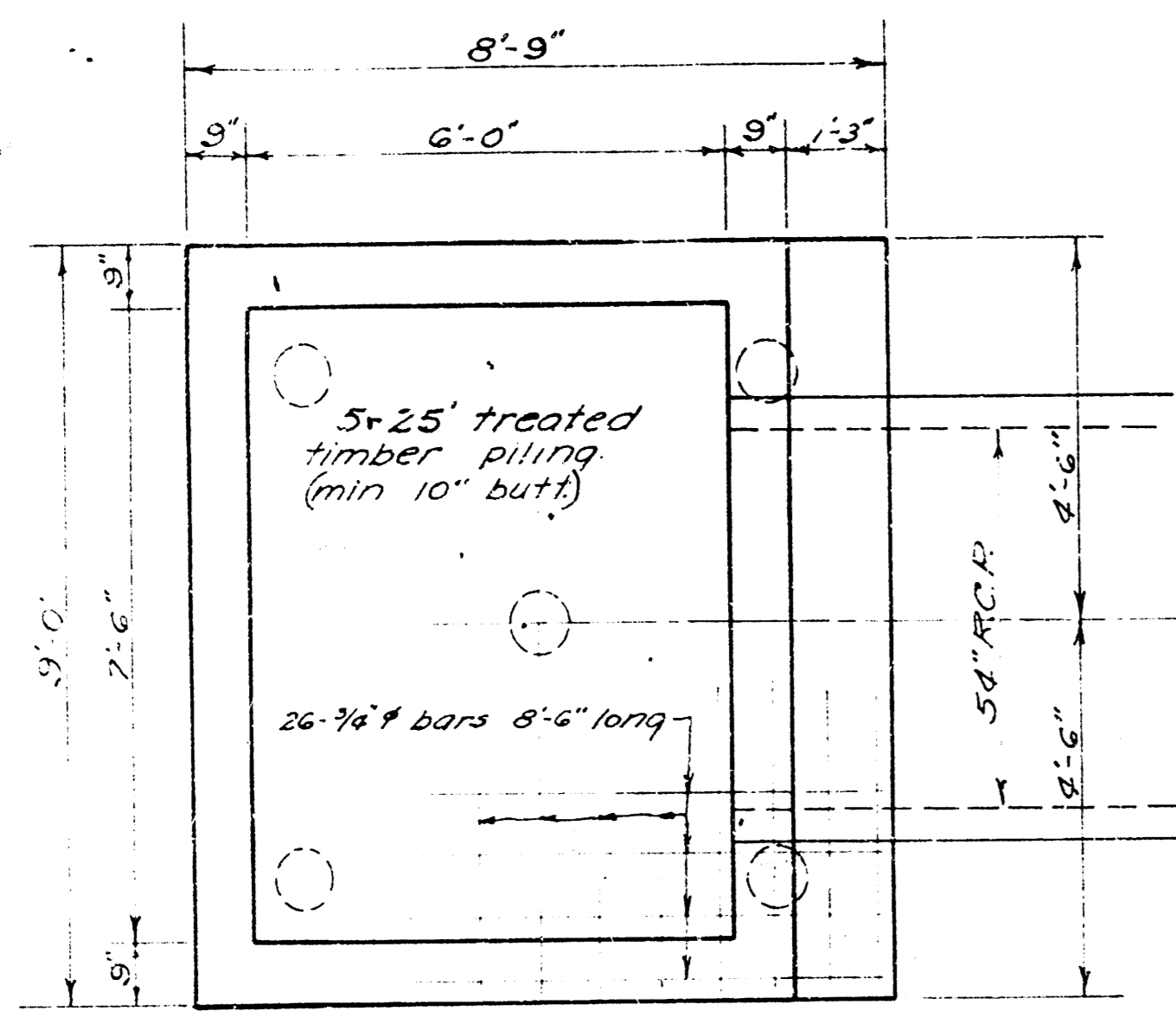
STORM WATER SEWER DIST. NO. 49
 CITY OF WICHITA KANSAS
 L.K. WHITE CITY ENGINEER
 Proj. No. C 22-76



INTERSECTION DETAILS
 Construct Inlets and connect to existing manhole on 24" storm water sewer.



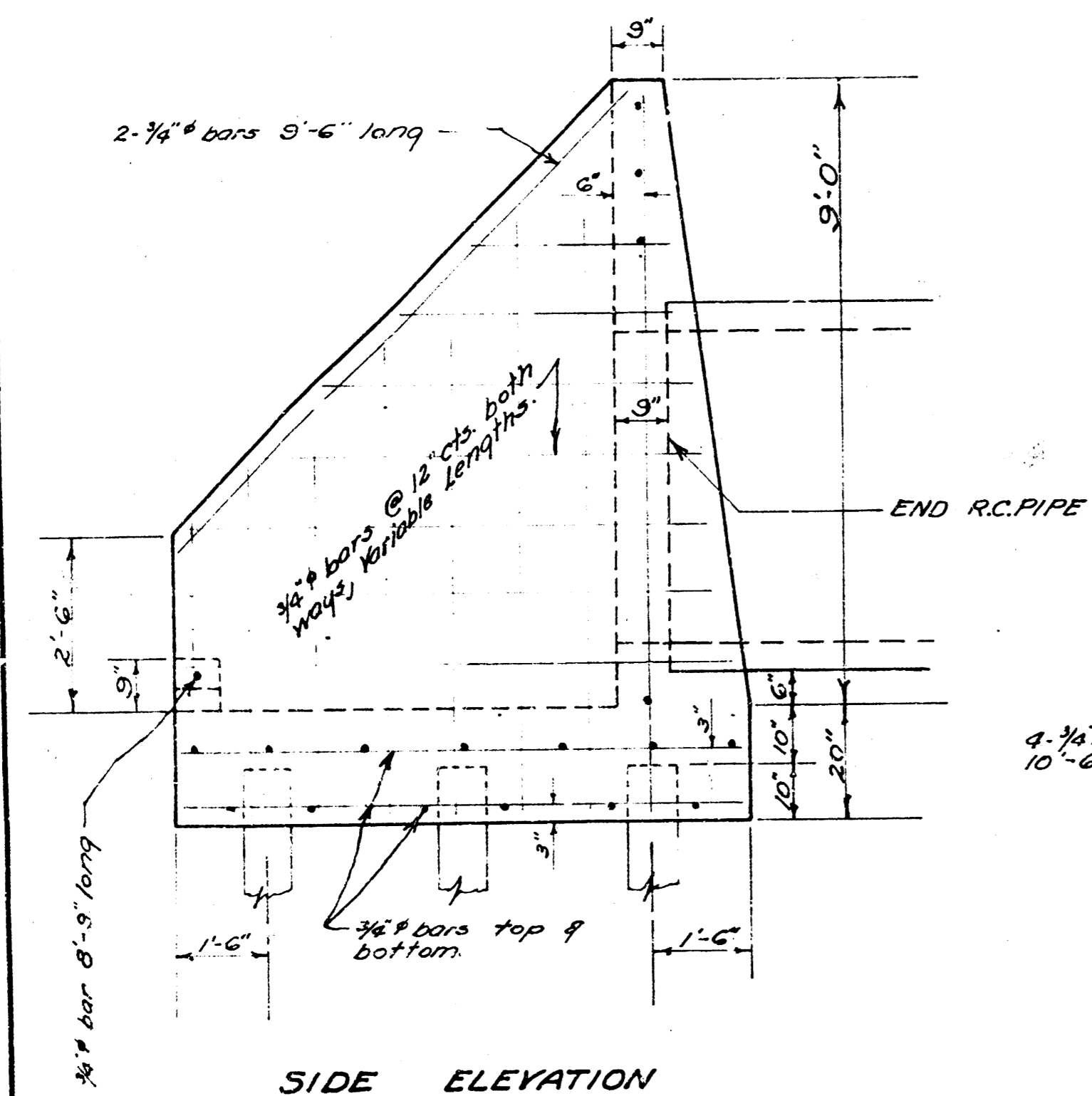
STORM WATER SEWER DIST. NO. 43
 CITY OF WICHITA KANSAS
 L.K. WHITE CITY ENGINEER
 Proj. No. C.22-76



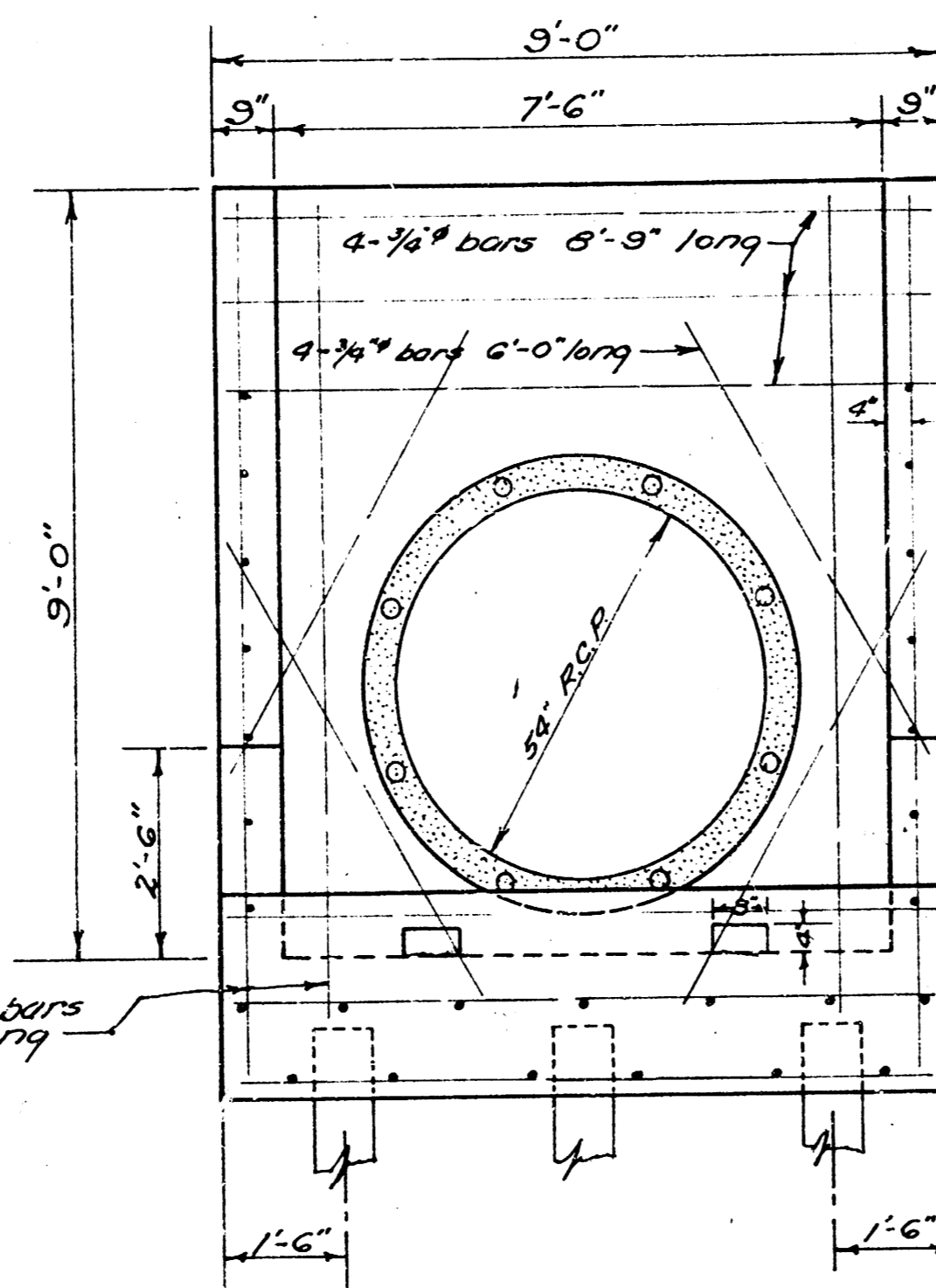
PLAN VIEW

Concrete for structures shall contain not less than 165 lbs. of cement per cu. yd. of concrete. In no event shall the total water content exceed 6.25 gals. per sack of cement. The mixture of fine and coarse aggregate shall be such as will produce a maximum density of a most workable mixture.

IN GENERAL - Pipes will enter and leave the manholes at various angles and elevations. Where possible bend reinf. bars around pipes (6" diam. or less). Where pipes are large use diagonal bars as shown. The floor of the manhole is to be shaped for flow and drainage. No deduction in concrete quantities shall be made for pipe openings. In addition, in concrete quantities shall be made for shaping manhole floor. An internal vibrator shall be used for placing concrete.



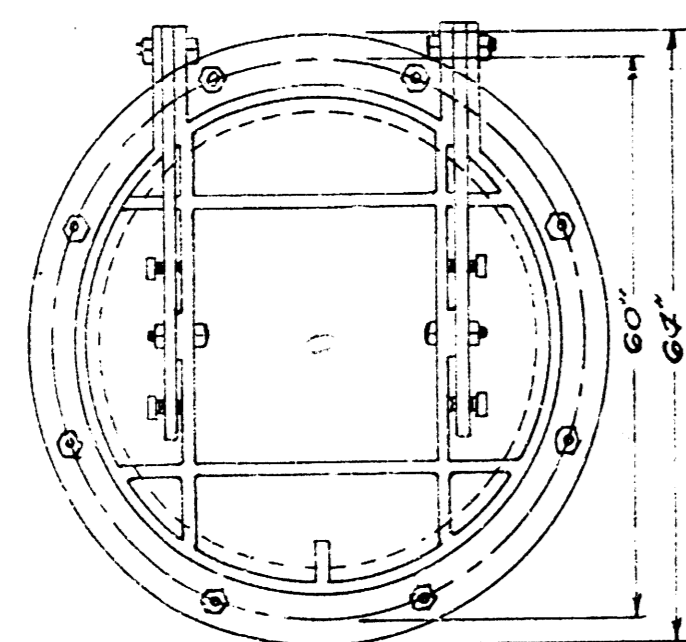
SIDE ELEVATION



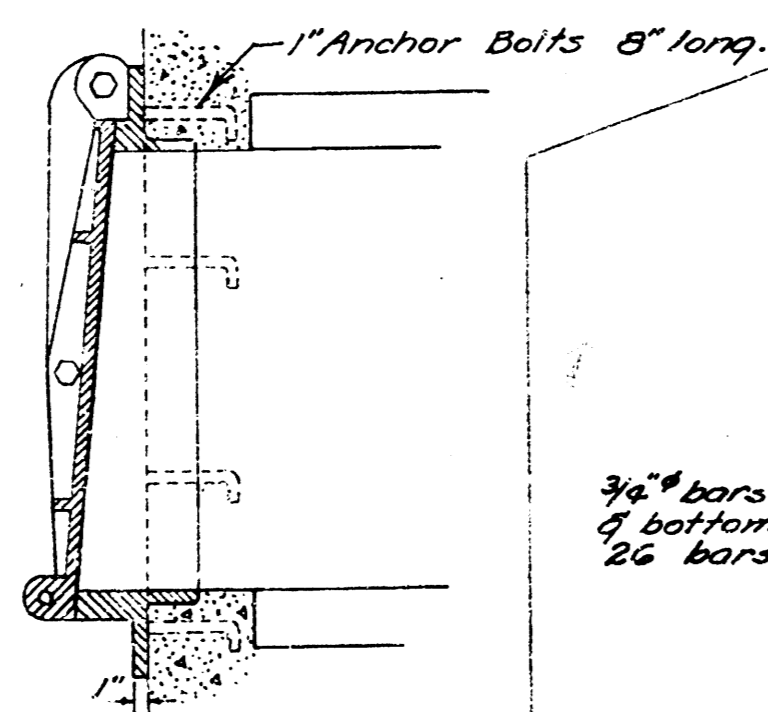
END ELEVATION

REINF. CONCRETE OUTFALL STRUCTURE

Scale 1/2" = 1'-0"



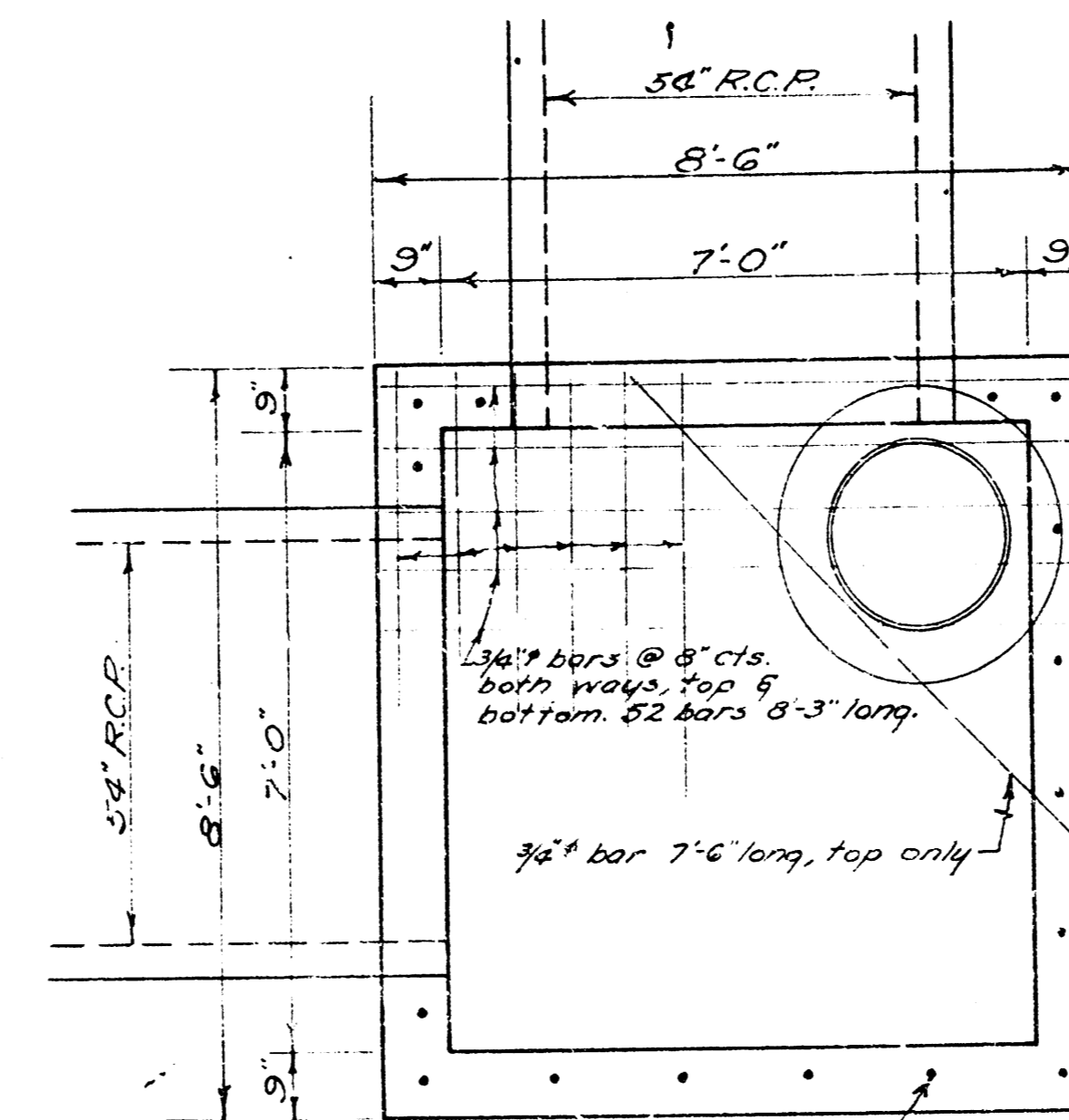
PEKRUL MODEL 16 AUTOMATIC FLAP GATE
No Scale



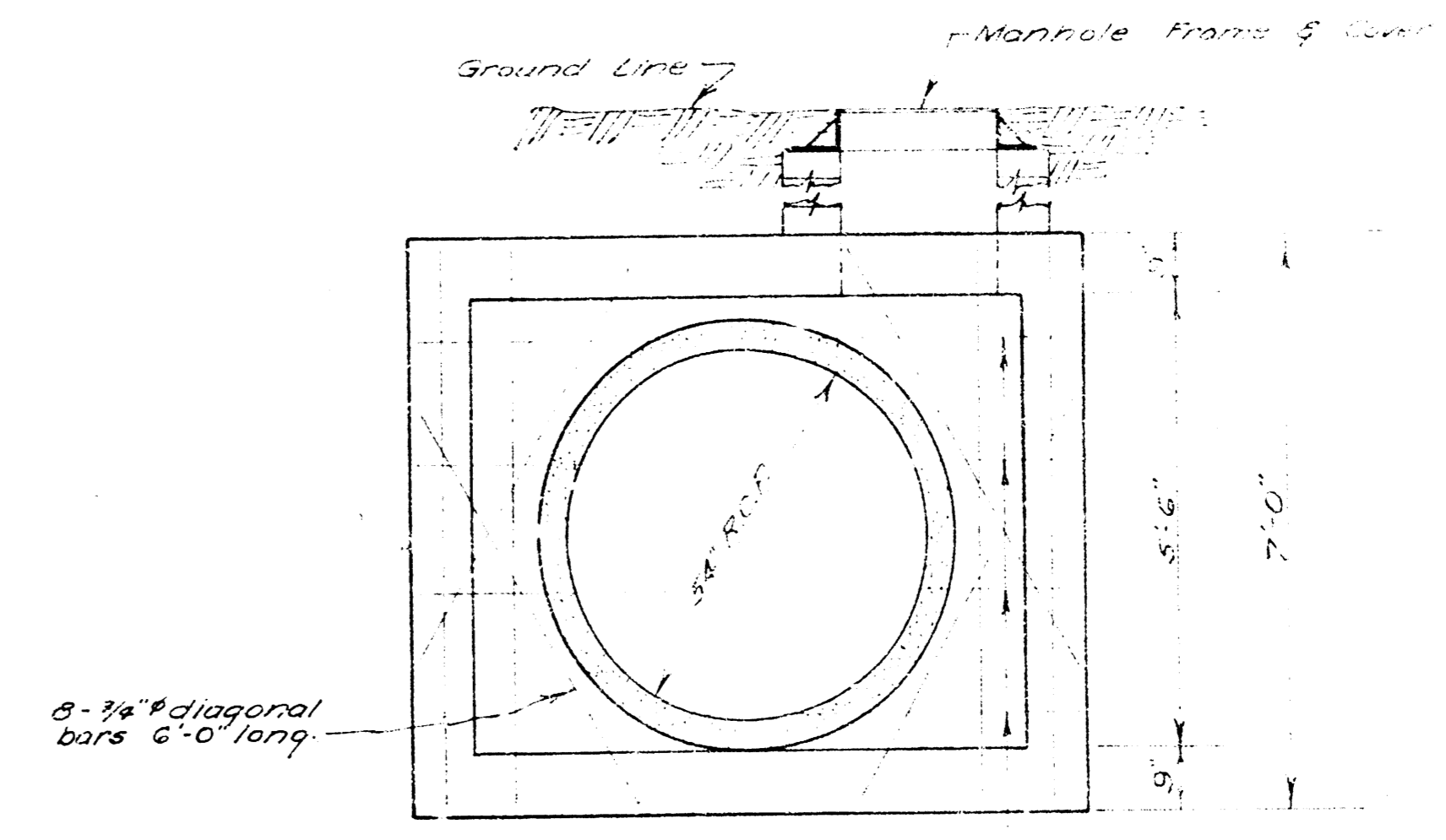
12-3/8" Y bars 6'-3" long

3/8" bars @ 8" cts. both ways, top & bottom, 20 bars 8'-6" long, 26 bars 6'-3" long.

PLAN VIEW



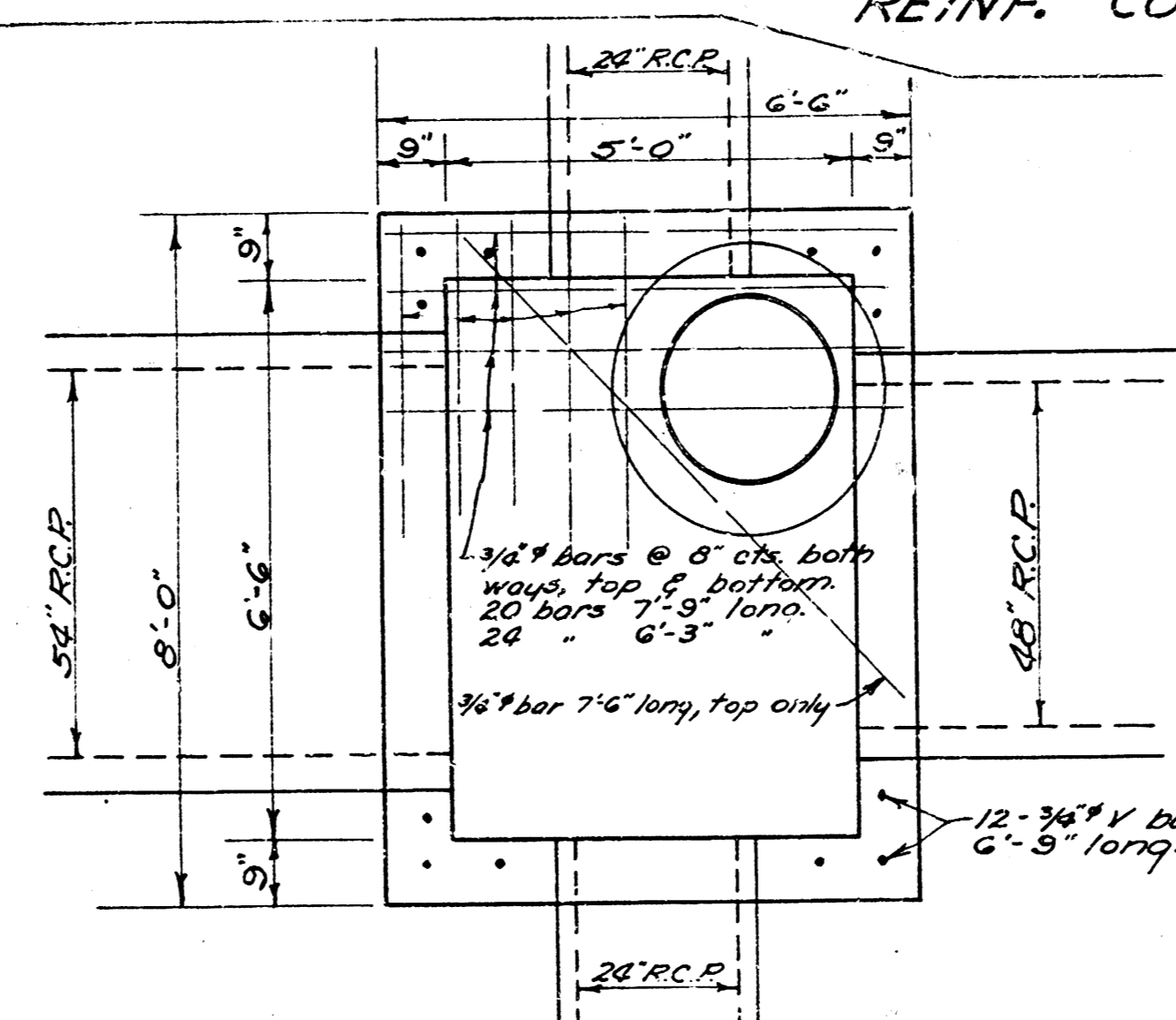
PLAN VIEW



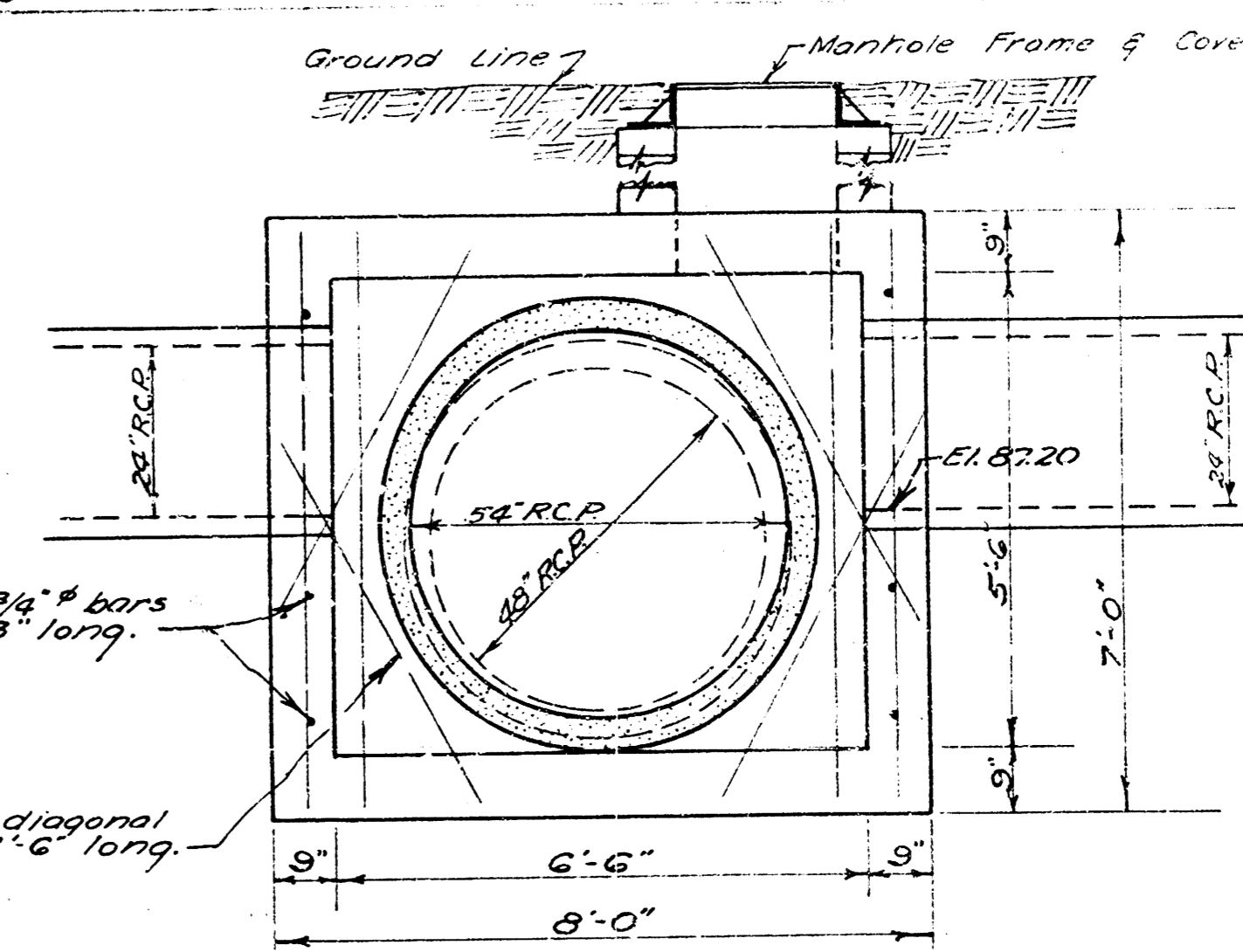
ELEVATION

REINF. CONCRETE MANHOLE Sta. 15+24.7

Scale: 1/2" = 1'-0"



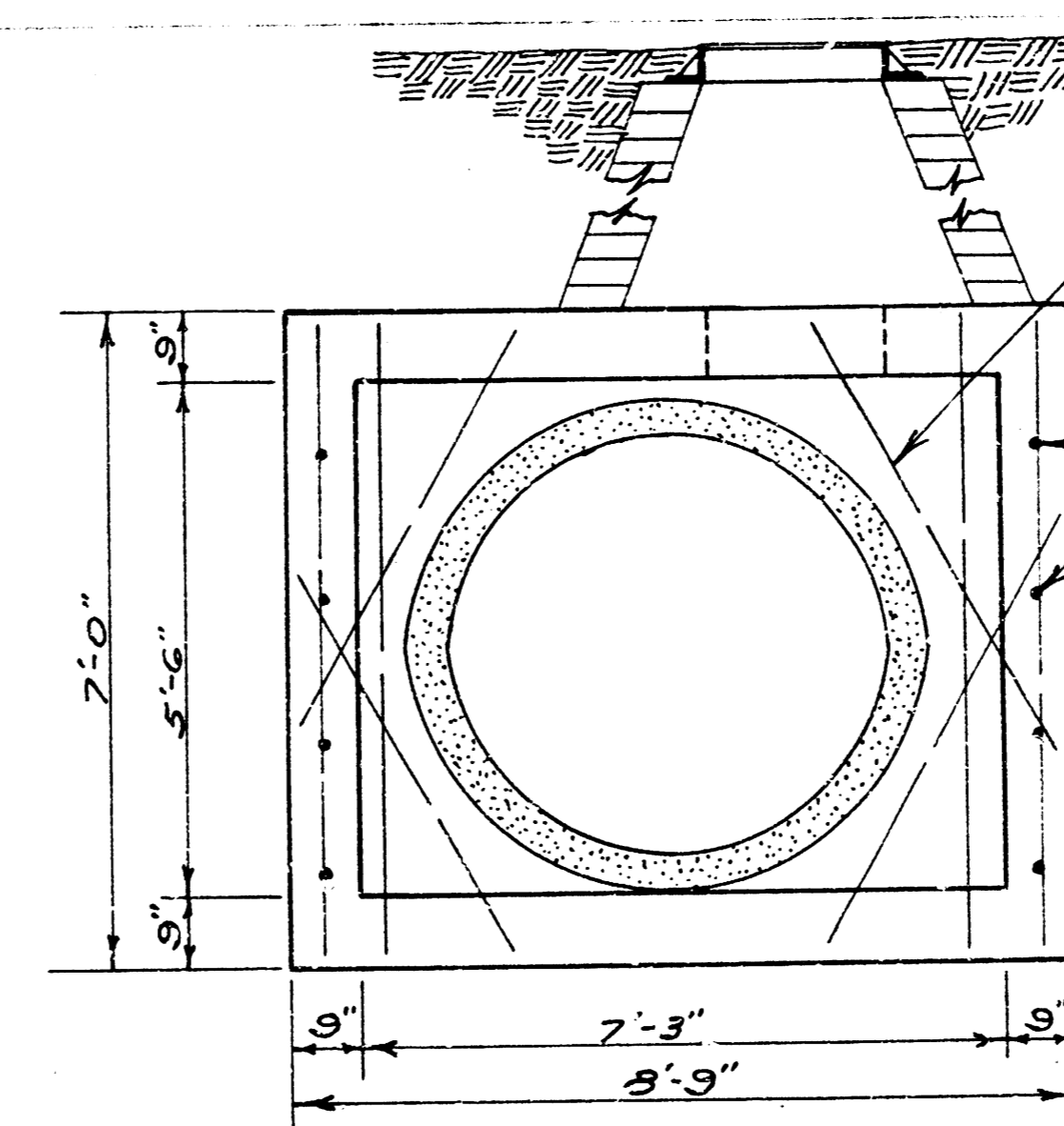
PLAN VIEW



ELEVATION

REINF. CONCRETE MANHOLE Sta. 16+55.8

Scale 1/2" = 1'-0"

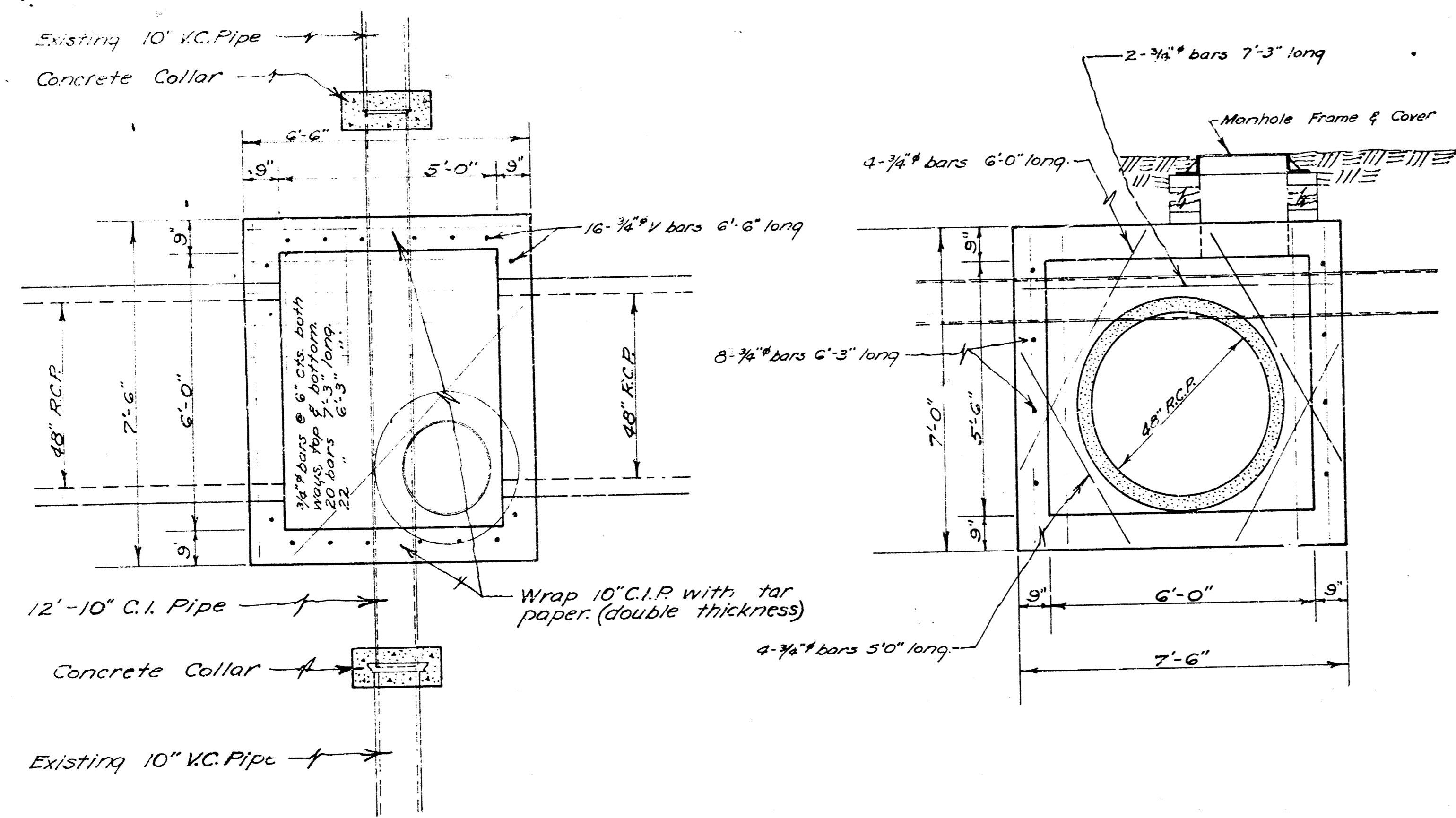


ELEVATION

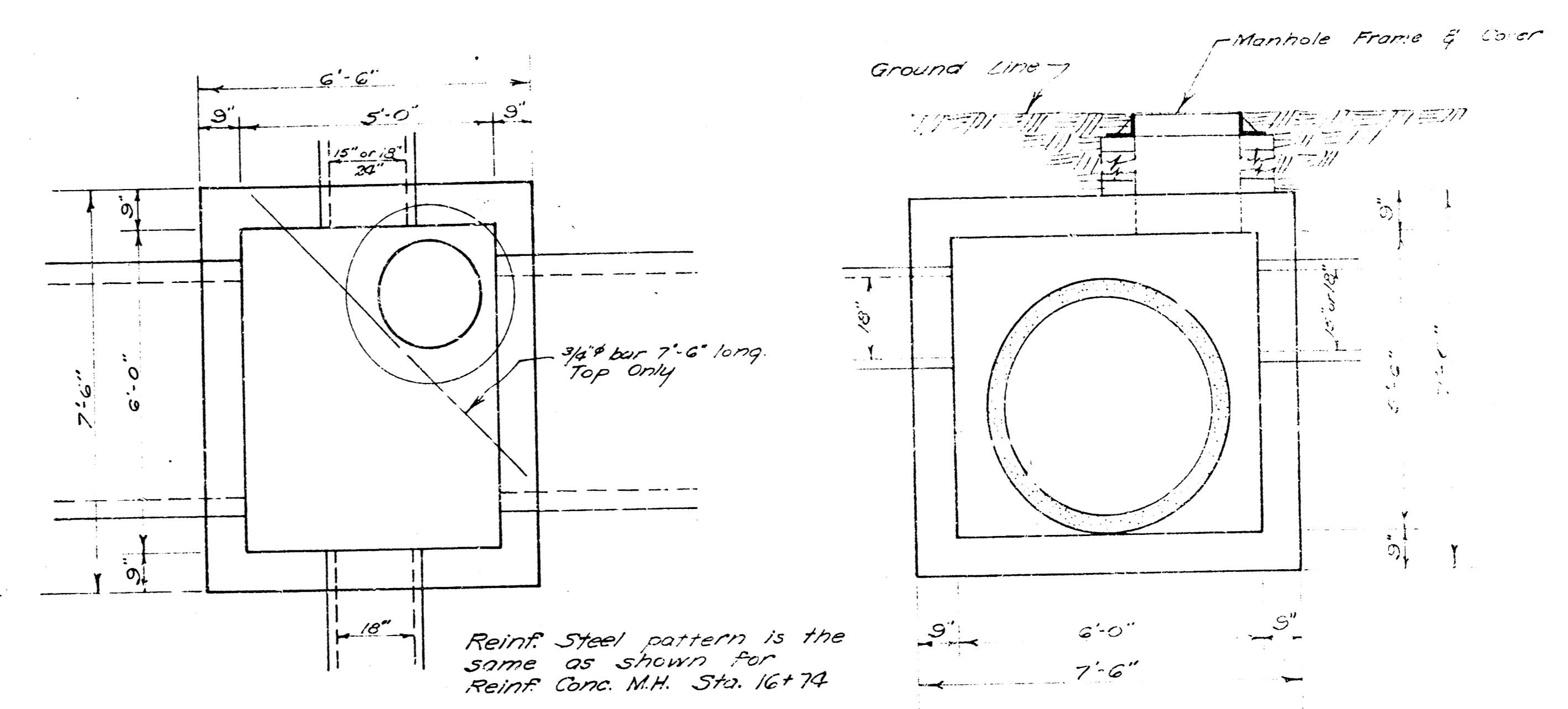
REINF. CONCRETE MANHOLE Sta. 0+34.7

Scale 1/2" = 1'-0"

STORM WATER SEWER DIST. NO. 49
CITY OF WICHITA KANSAS
L. K. WHITE CITY ENGINEER
Proj. No. C 22-76
Date, October 1952

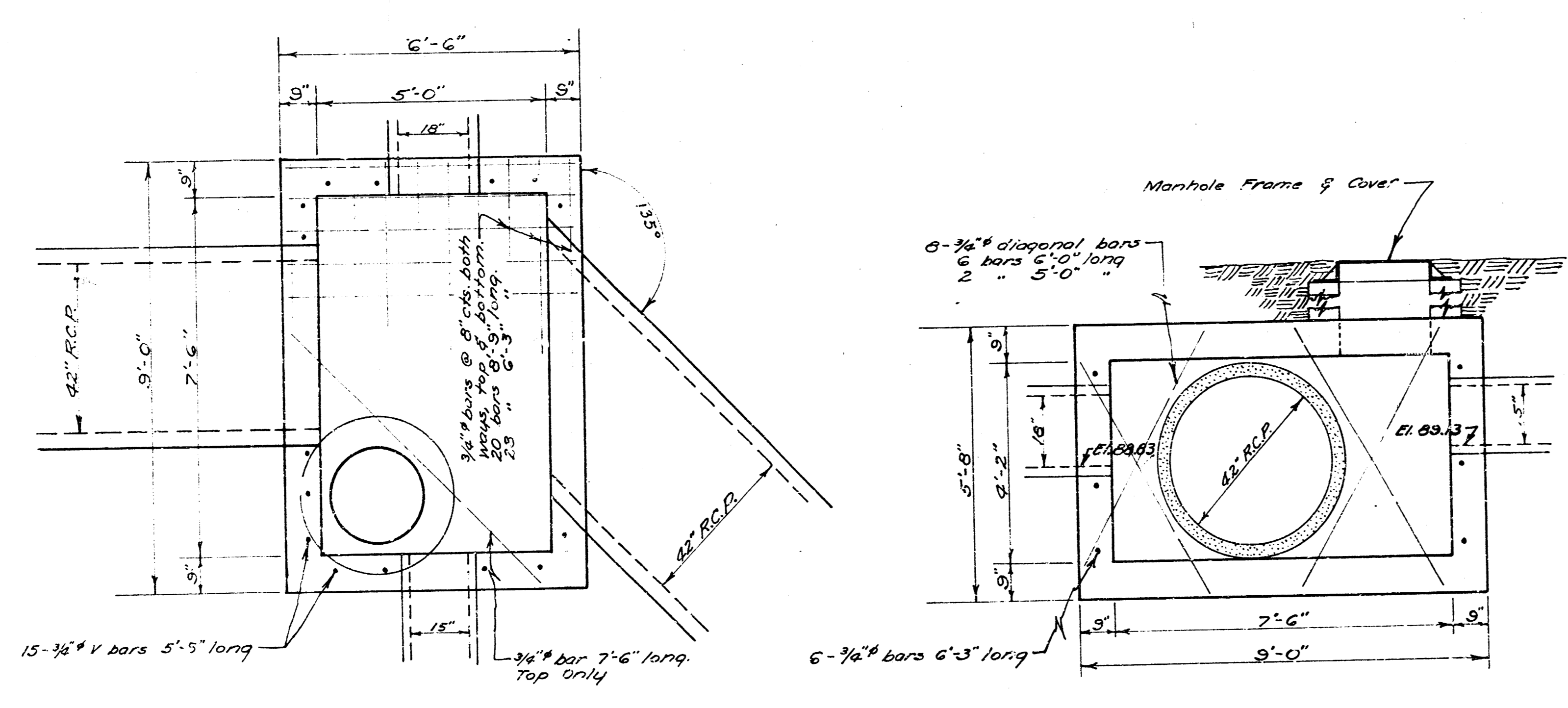


PLAN VIEW
 REINF. CONCRETE MANHOLE Sta. 16+74
 Scale: 1/2" = 1'-0"

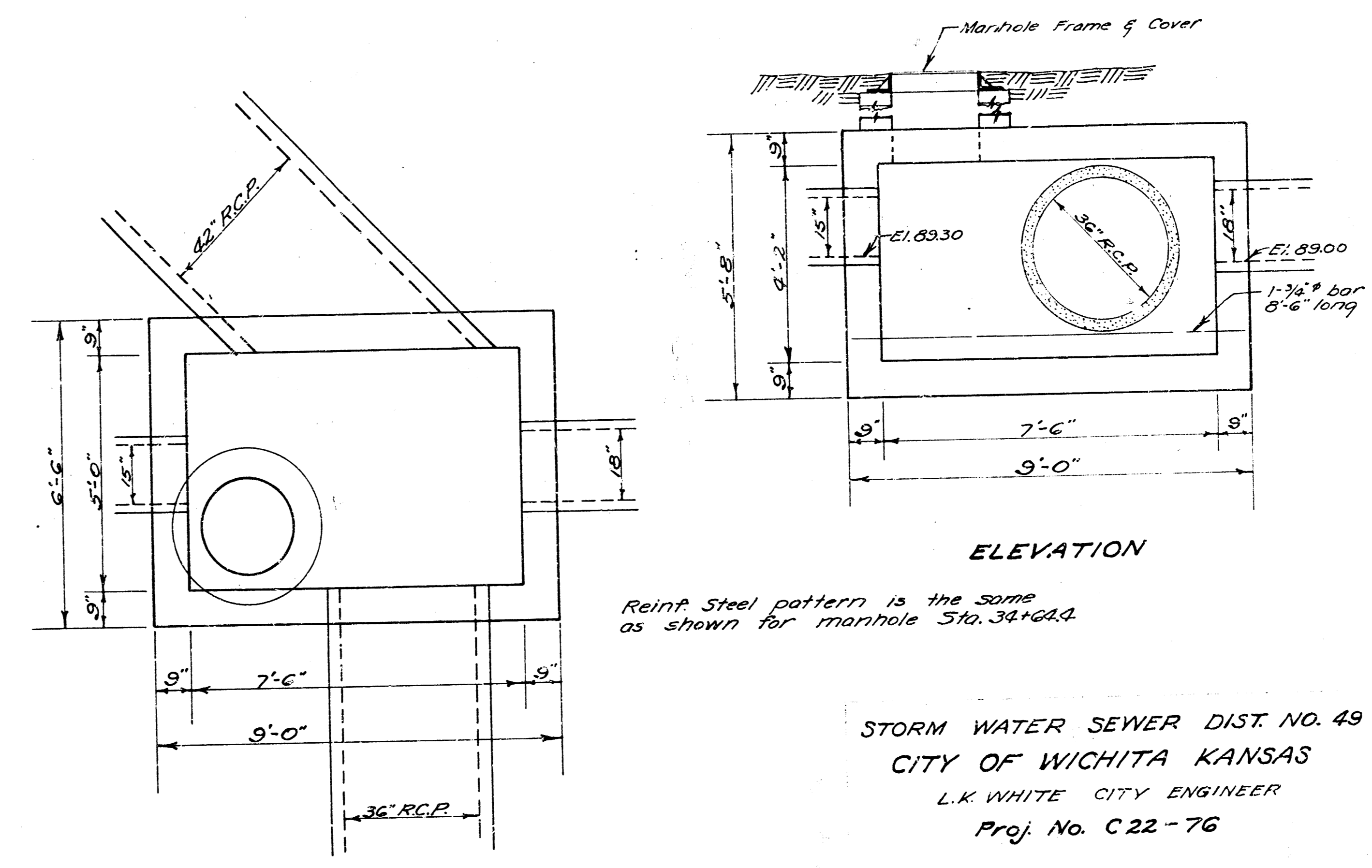


PLAN VIEW
 REINF. CONCRETE MANHOLE
 Scale 1/2" = 1'-0"

ELEVATION
 Sta. 20+25.8
 Sta. 23+45.8
 Sta. 26+05.8
 Sta. 28+31.3



PLAN VIEW
 REINF. CONCRETE MANHOLE Sta. 34+64.4
 Scale 1/2" = 1'-0"



PLAN VIEW
 REINF. CONC. MANHOLE Sta. 35+27.3
 Scale 1/2" = 1'-0"

STORM WATER SEWER DIST. NO. 49
 CITY OF WICHITA KANSAS
 L.K. WHITE CITY ENGINEER
 Proj. No. C22-76
 Date, October 1952