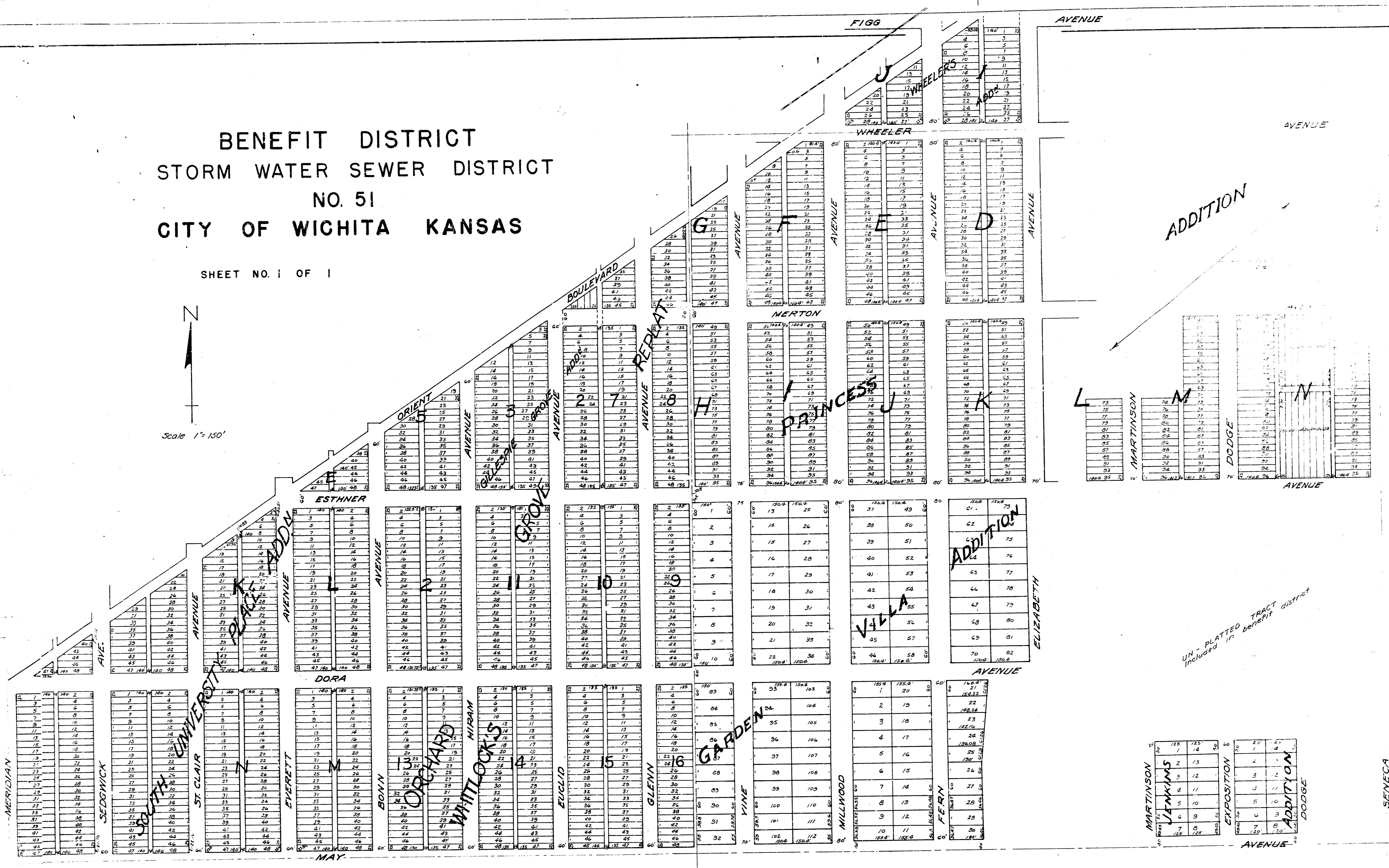
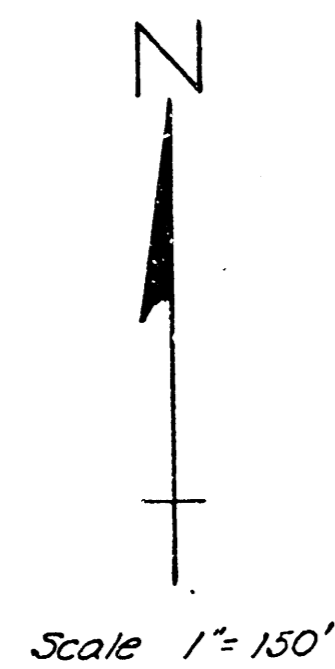


BENEFIT DISTRICT  
STORM WATER SEWER DISTRICT  
NO. 51  
CITY OF WICHITA KANSAS

SHEET NO. 1 OF 1



MARTINSON  
JACKSON  
EXPOSITION  
ADDITION  
DODGE

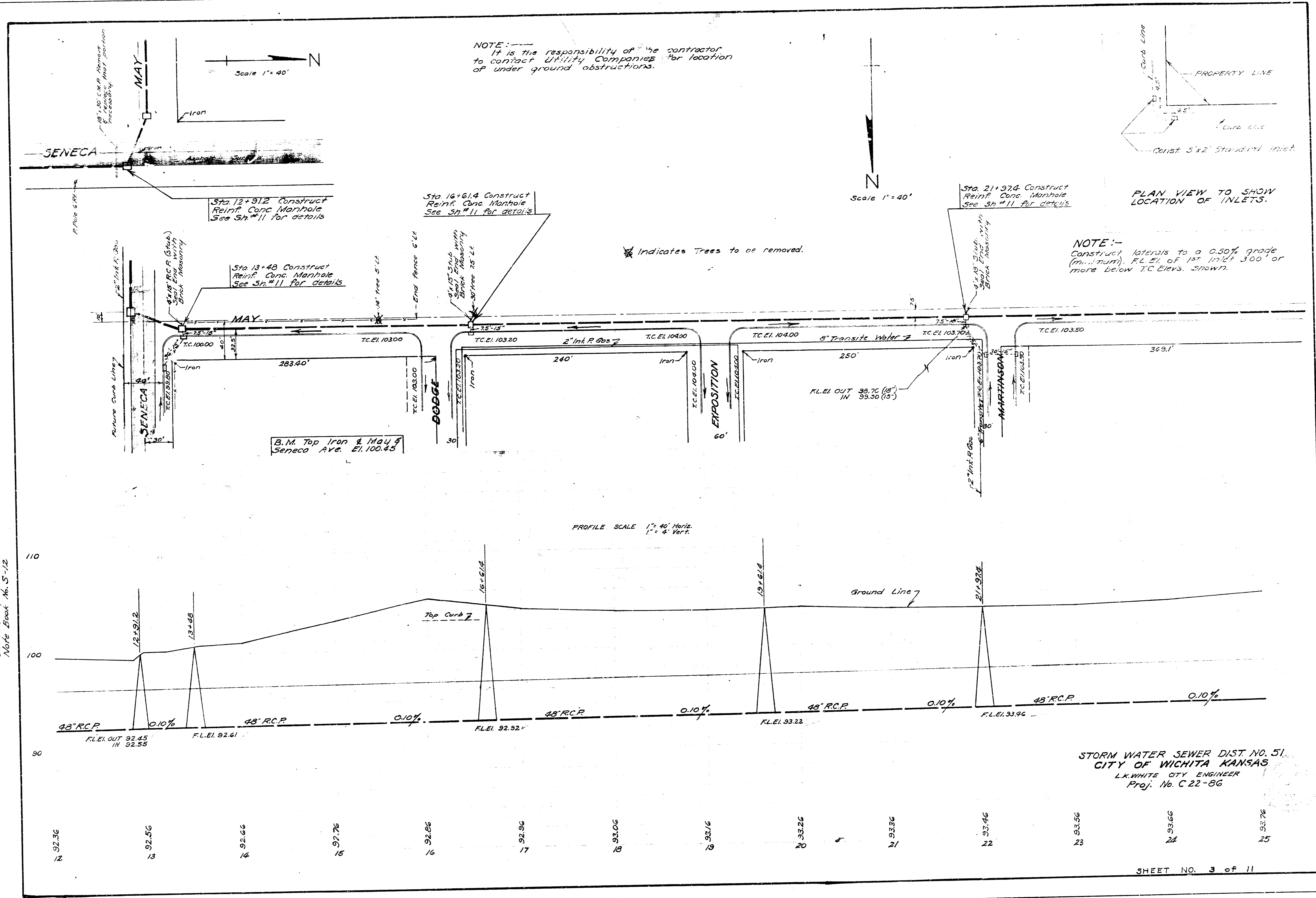
1	2	3	4
5	6	7	8
9	10	11	12
13	14	15	16
17	18	19	20
21	22	23	24
25	26	27	28
29	30	31	32
33	34	35	36
37	38	39	40
41	42	43	44
45	46	47	48
49	50	51	52
53	54	55	56
57	58	59	60
61	62	63	64
65	66	67	68
69	70	71	72
73	74	75	76
77	78	79	80
81	82	83	84
85	86	87	88
89	90	91	92
93	94	95	96
97	98	99	100

UN-PLATTED TRACT  
included in benefit district



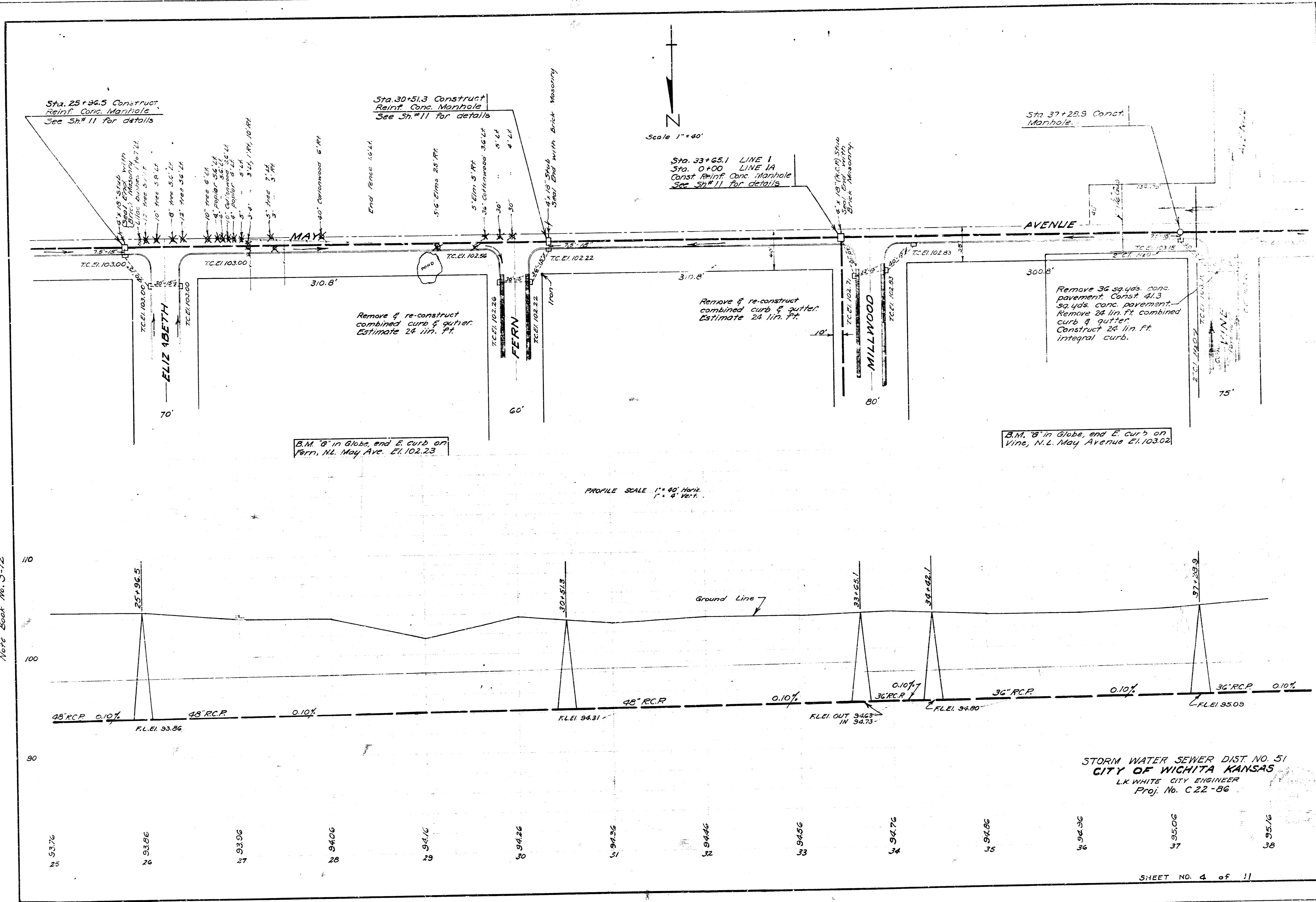


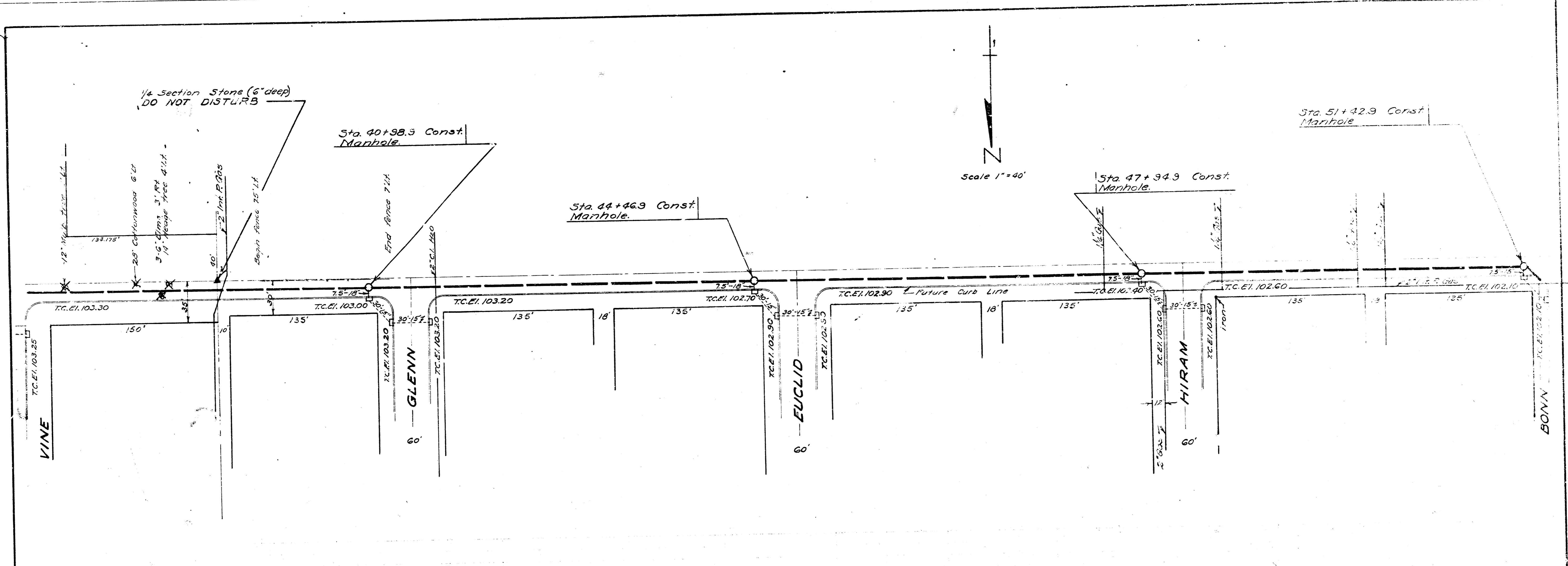
Date Oct. 1952.  
 Drawn by J.L.A.  
 Checked by  
 Note Book No. 5-12



12	92.36	13	92.56	14	92.66	15	92.76	16	92.86	17	92.96	18	93.06	19	93.16	20	93.26	21	93.36	22	93.46	23	93.56	24	93.66	25	93.76
----	-------	----	-------	----	-------	----	-------	----	-------	----	-------	----	-------	----	-------	----	-------	----	-------	----	-------	----	-------	----	-------	----	-------

Date Oct 1952  
 Drawn by J.L.A.  
 Checked by Note Book No. 5-12

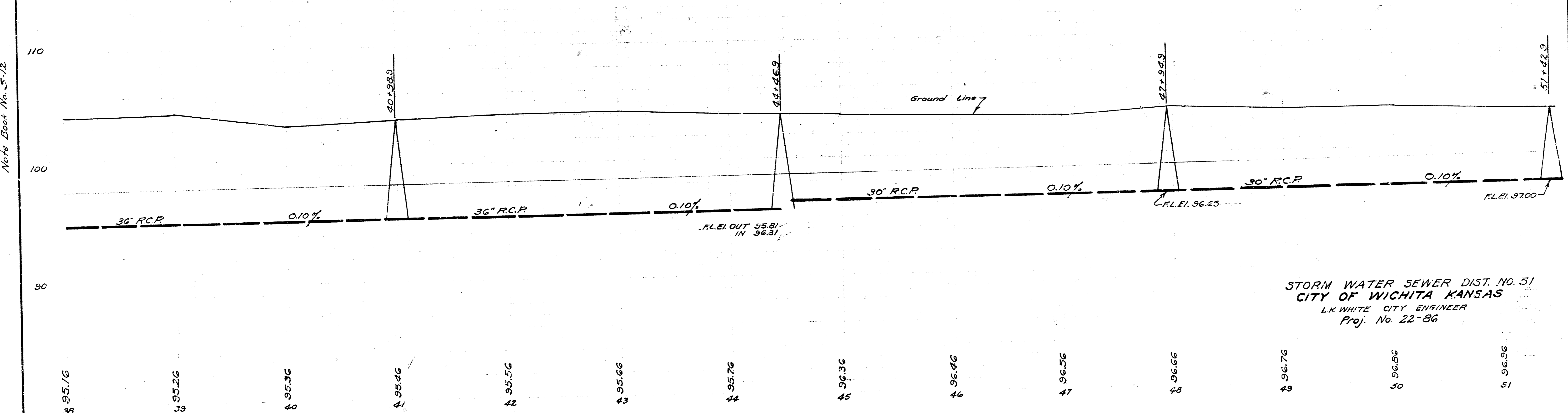




Scale 1"=40'

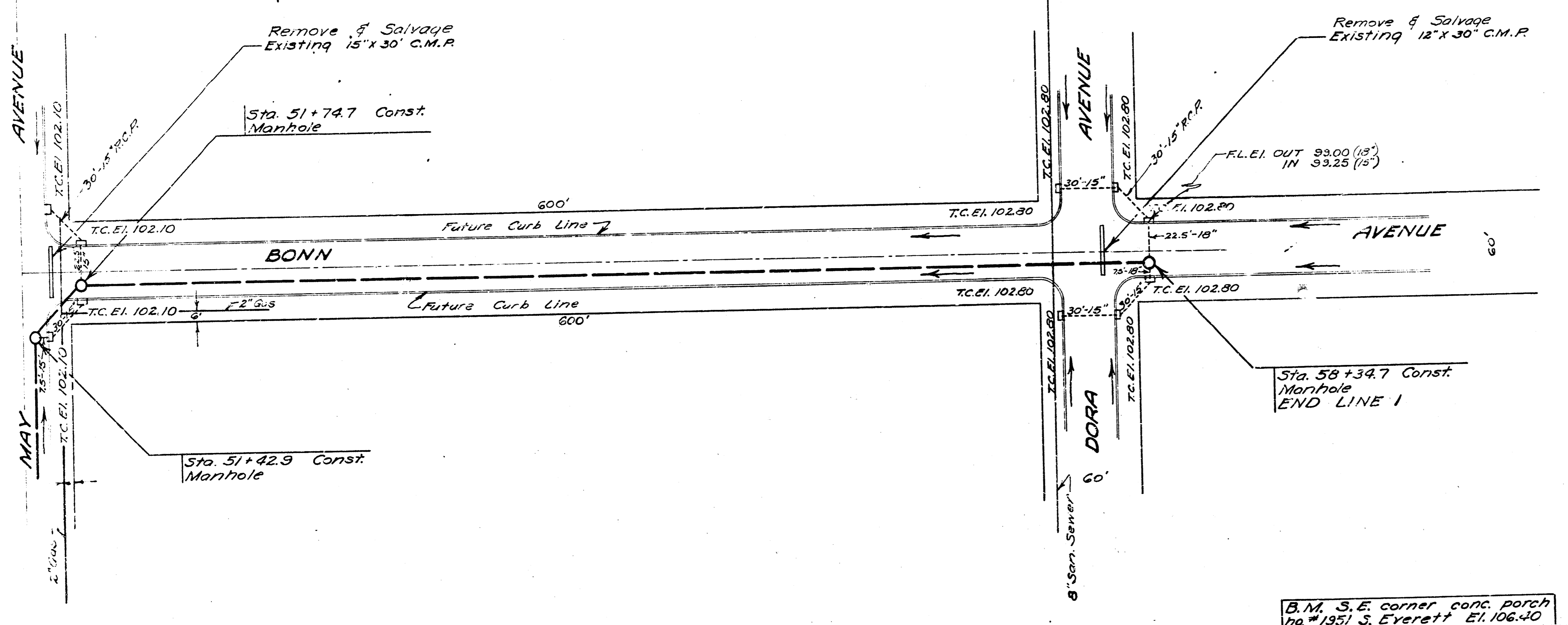
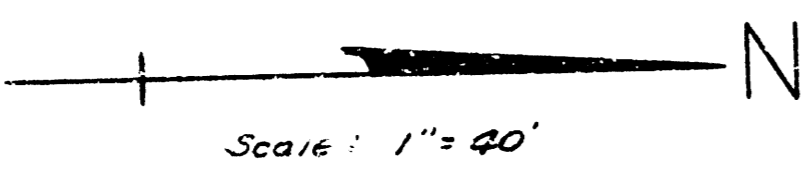
N

PROFILE SCALE 1"=40' Horiz.  
1"=4' Vert.



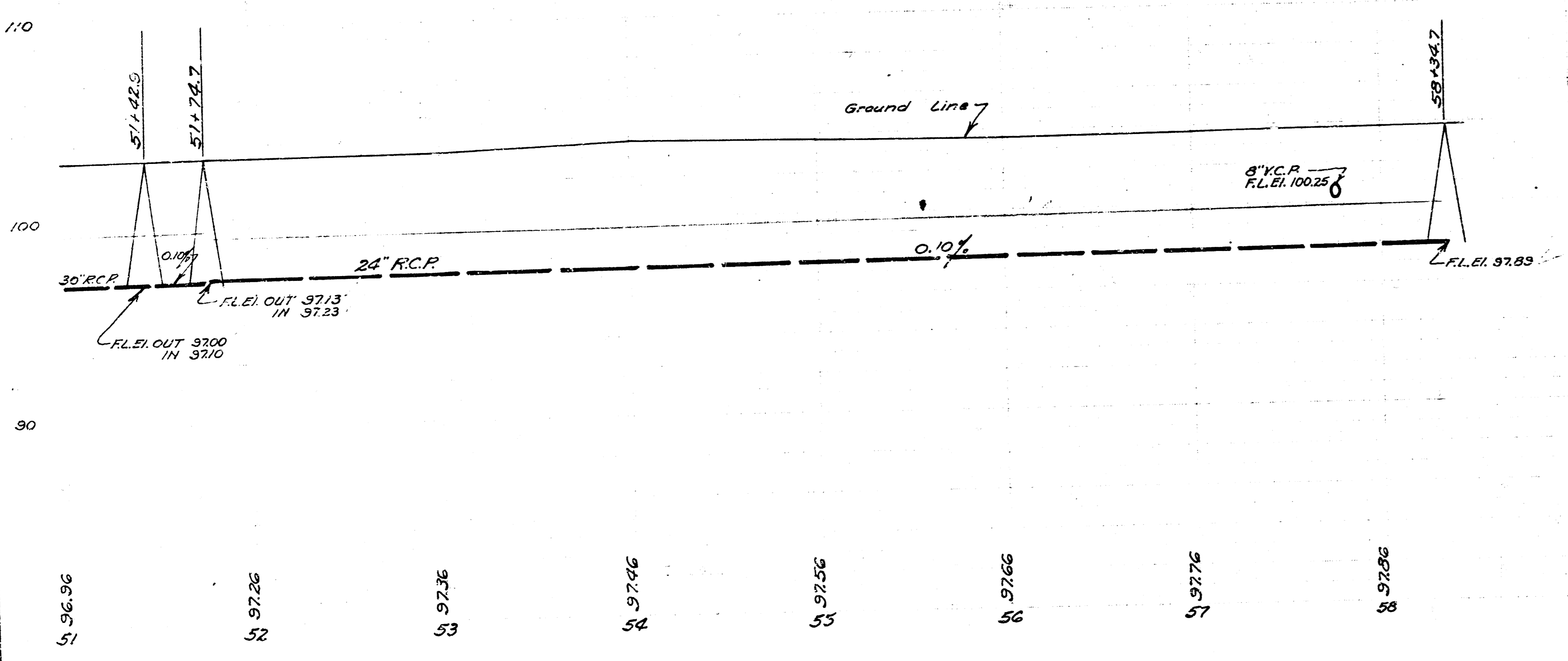
Date Oct. 1952  
Drawn by J.L.A.  
Checked by Note Book No. 5-12

STORM WATER SEWER DIST. NO. 51  
CITY OF WICHITA KANSAS  
L.K. WHITE CITY ENGINEER  
Proj. No. 22-86



B.M. S.E. corner conc. porch  
 Pa. #1951 S. Everett El. 106.40

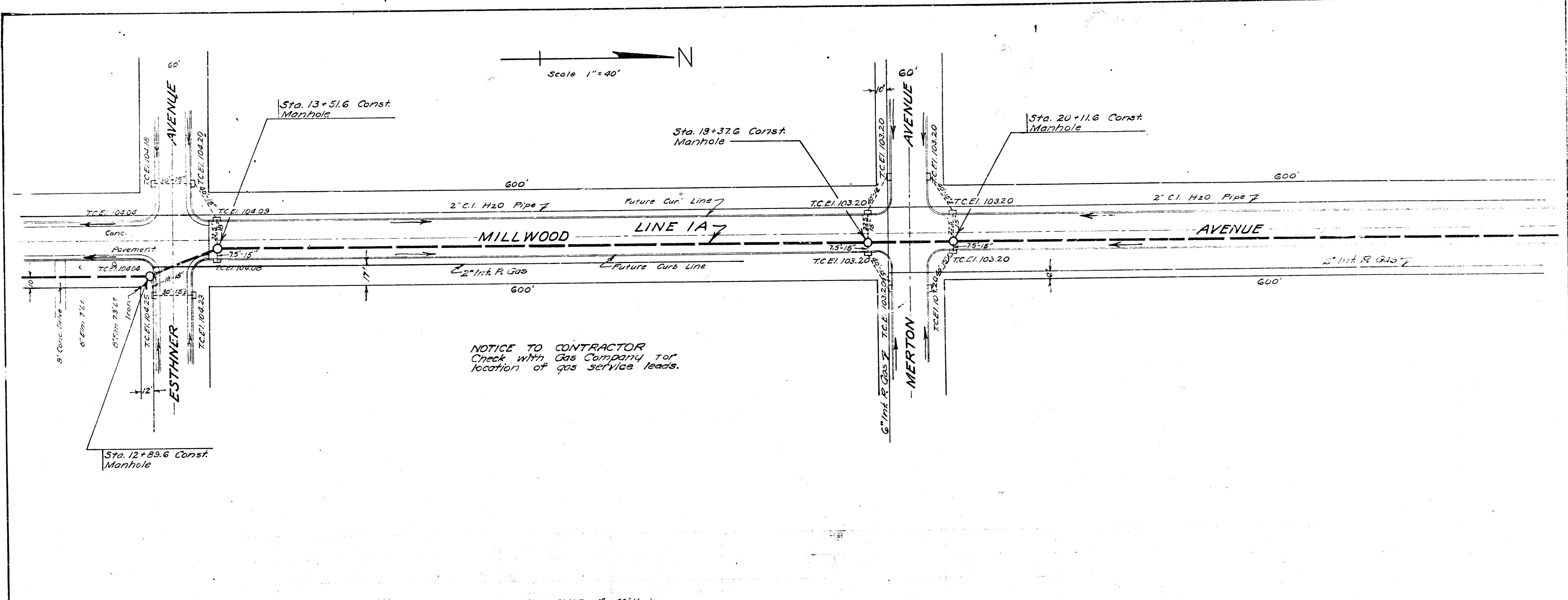
PROFILE SCALE 1" = 40' Horiz.  
 1" = 4' Vert.



STORM WATER SEWER DIST. NO. 51  
 CITY OF WICHITA KANSAS  
 L. WHITE CITY ENGINEER  
 Proj. No. C.22-86

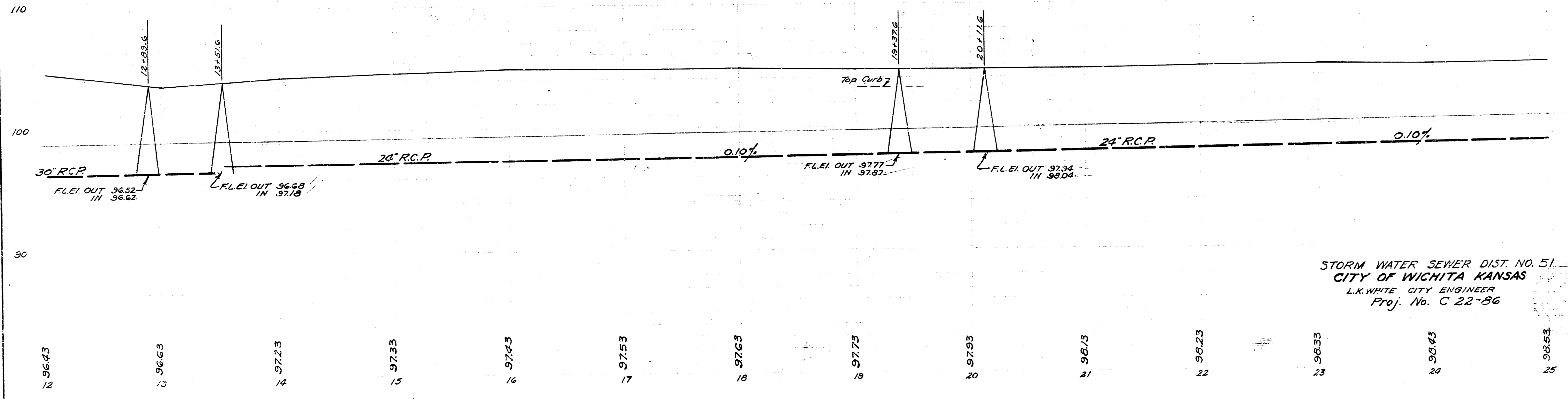
Date Oct. 1952  
 Drawn by J.L.A.  
 Checked by  
 Note Book No. 5-11





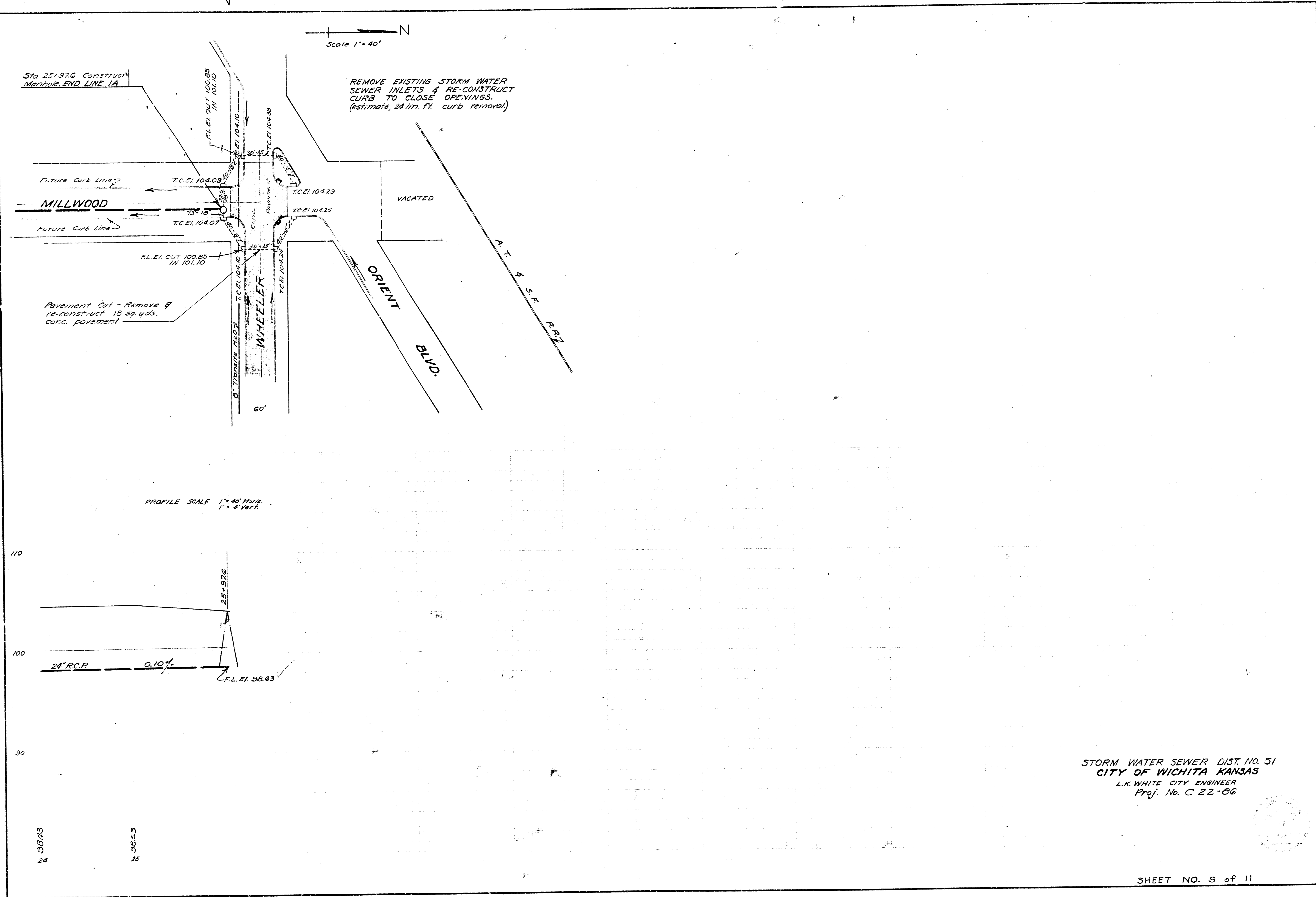
NOTICE TO CONTRACTOR  
 Check with Gas Company for  
 location of gas service leads.

PROFILE SCALE 1" = 40' Horiz.  
 1" = 4' Vert.



Date Oct. 1952  
 Drawn by J.L.L.A.  
 Checked by  
 Note Book No. 5-12

STORM WATER SEWER DIST. NO. 51  
 CITY OF WICHITA KANSAS  
 L.K. WHITE CITY ENGINEER  
 Proj. No. C 22-86



Sta 25+97.6 Construct  
Manhole END LINE 1A

Scale 1"=40'

REMOVE EXISTING STORM WATER  
SEWER INLETS & RE-CONSTRUCT  
CURB TO CLOSE OPENINGS.  
(estimate, 24 in. P. curb removal)

Future Curb Line

MILLWOOD

Future Curb Line

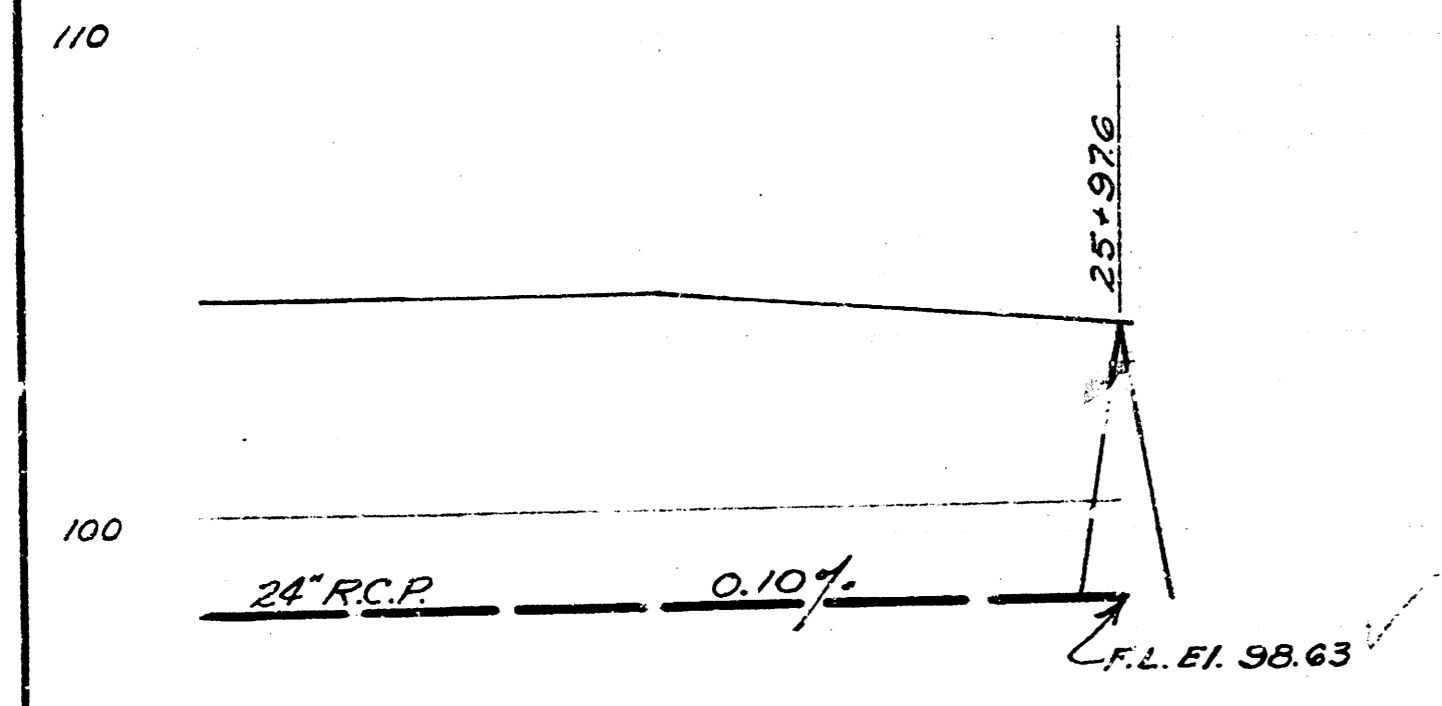
Pavement Cut - Remove &  
re-construct 18 sq. yds.  
conc. pavement.

VACATED

ORIENT  
BLVD.

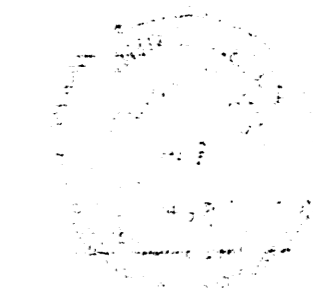
A.T. & S.F.  
R.R.

PROFILE SCALE 1"=40' Horiz.  
1"=4' Vert.



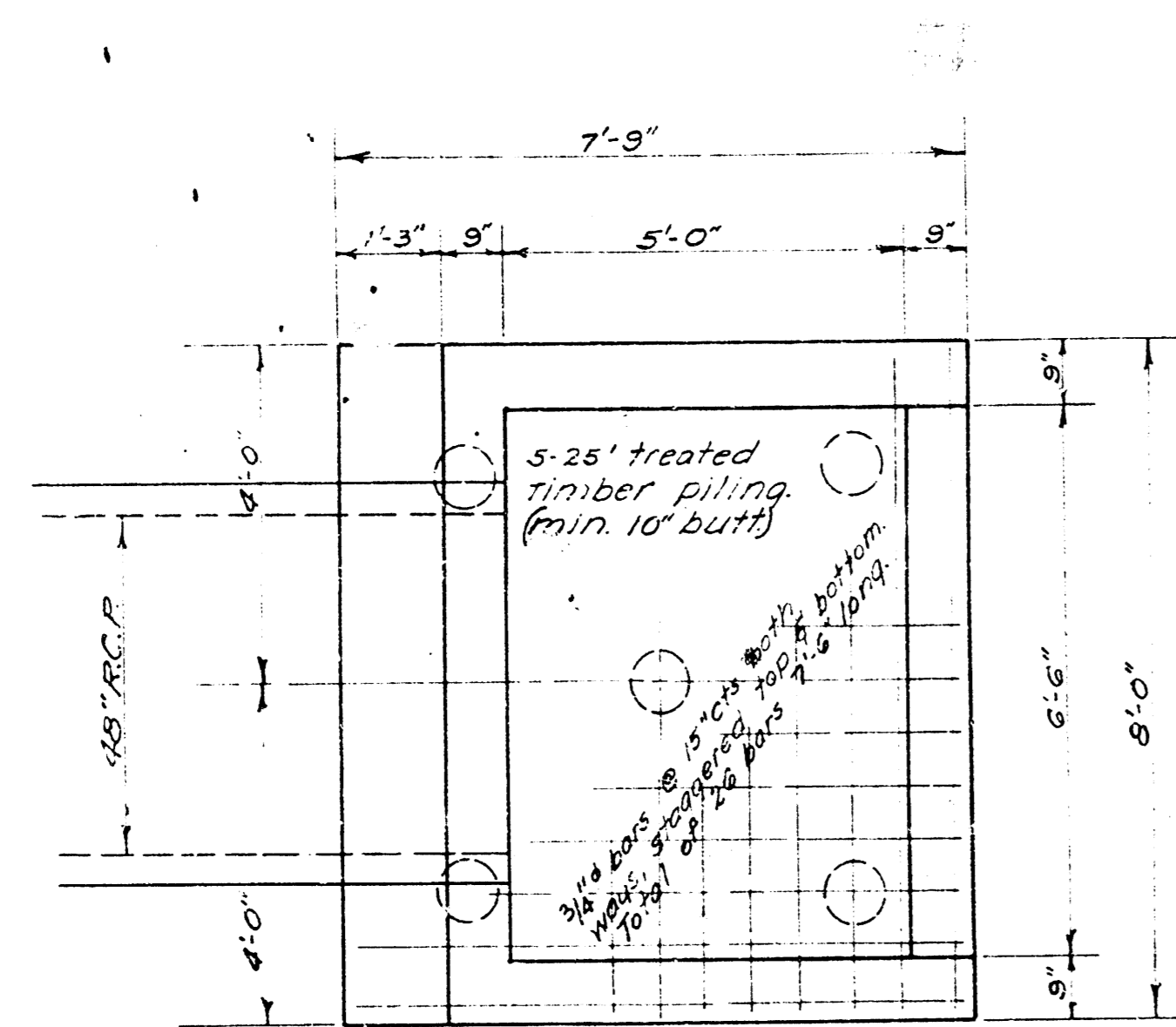
Date Oct. 1952  
Drawn by J.L.A.  
Checked by  
Note Book No. S-12

STORM WATER SEWER DIST. NO. 51  
CITY OF WICHITA KANSAS  
L.K. WHITE CITY ENGINEER  
Proj. No. C 22-86

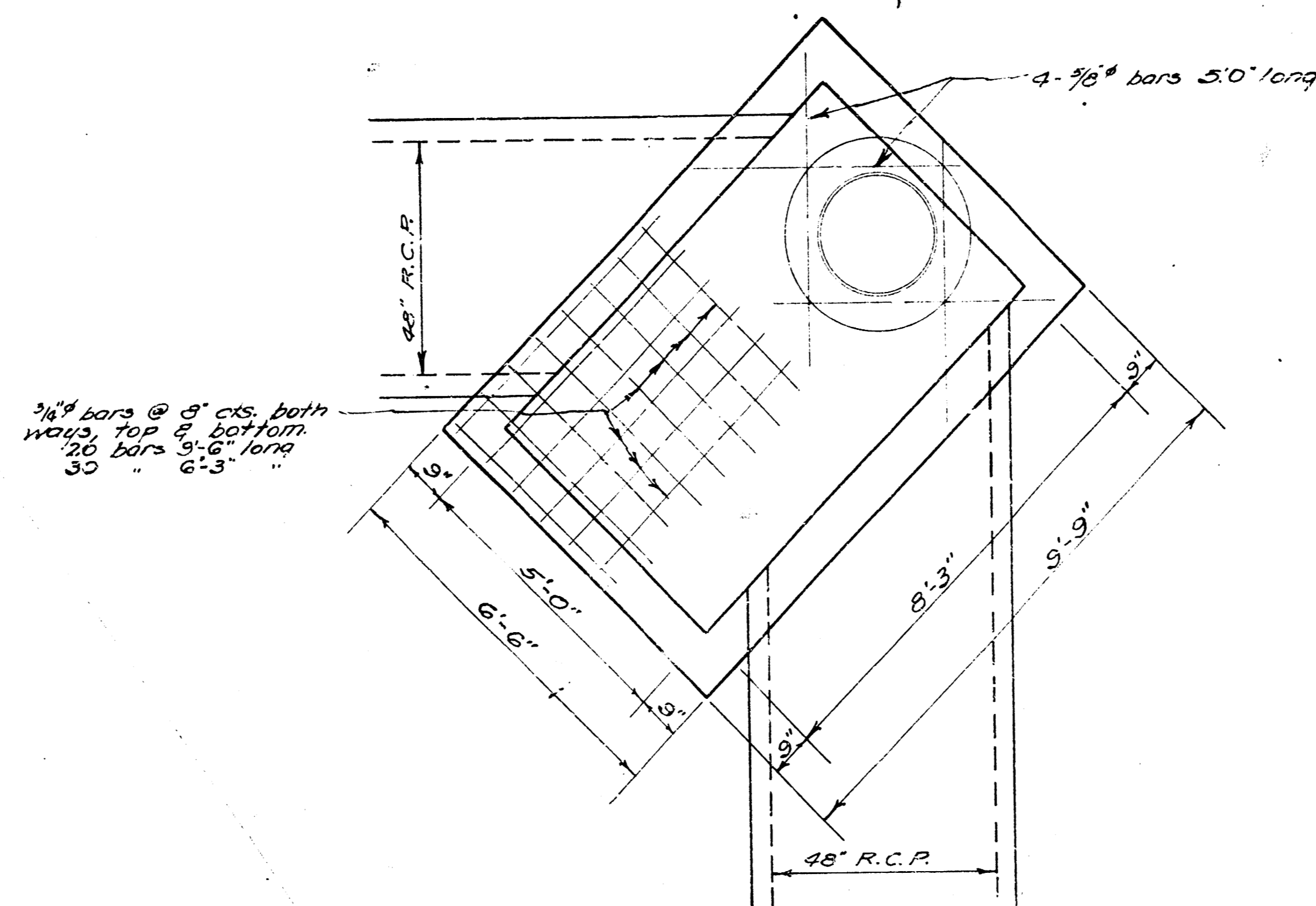


98.63  
24

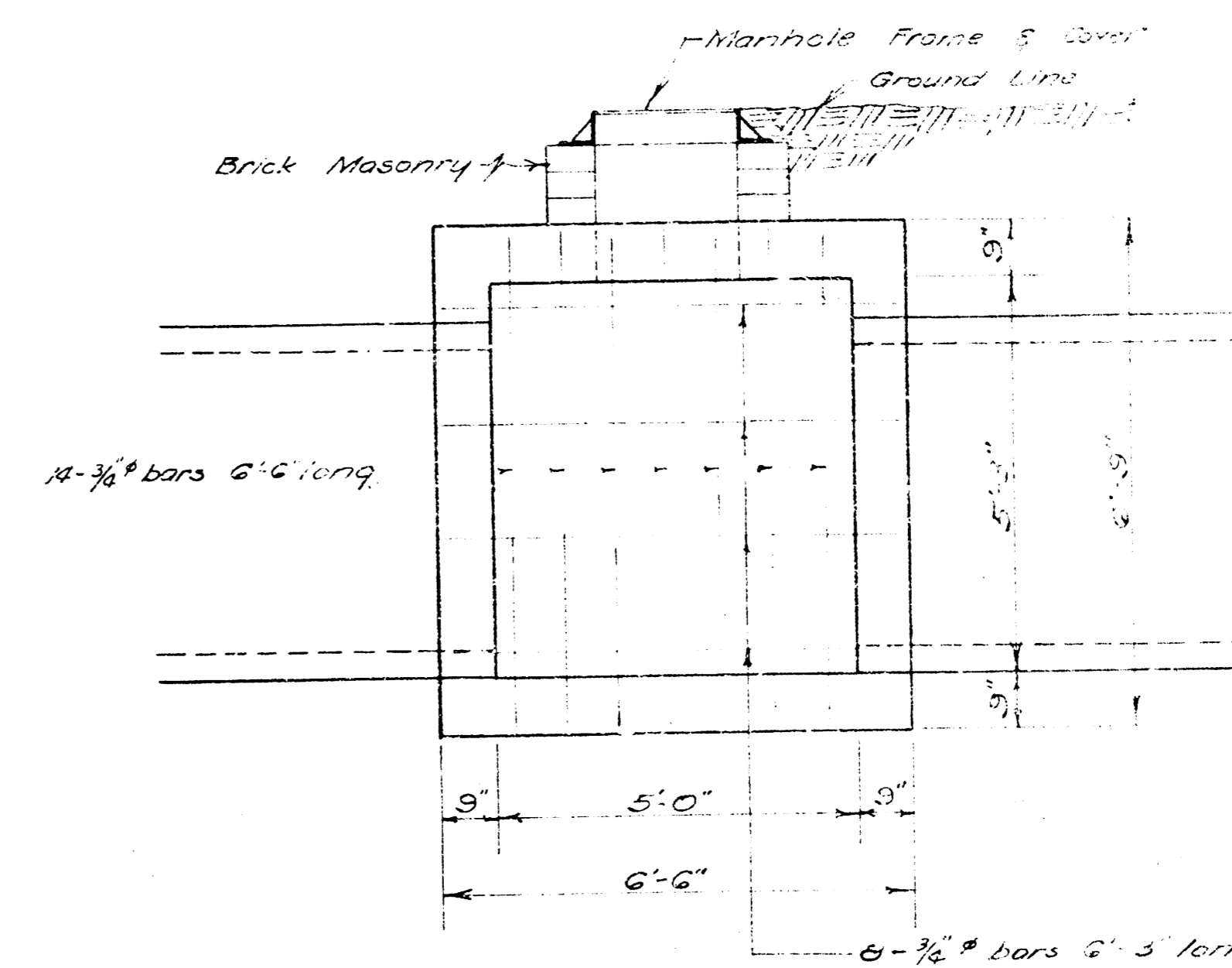
98.53  
25



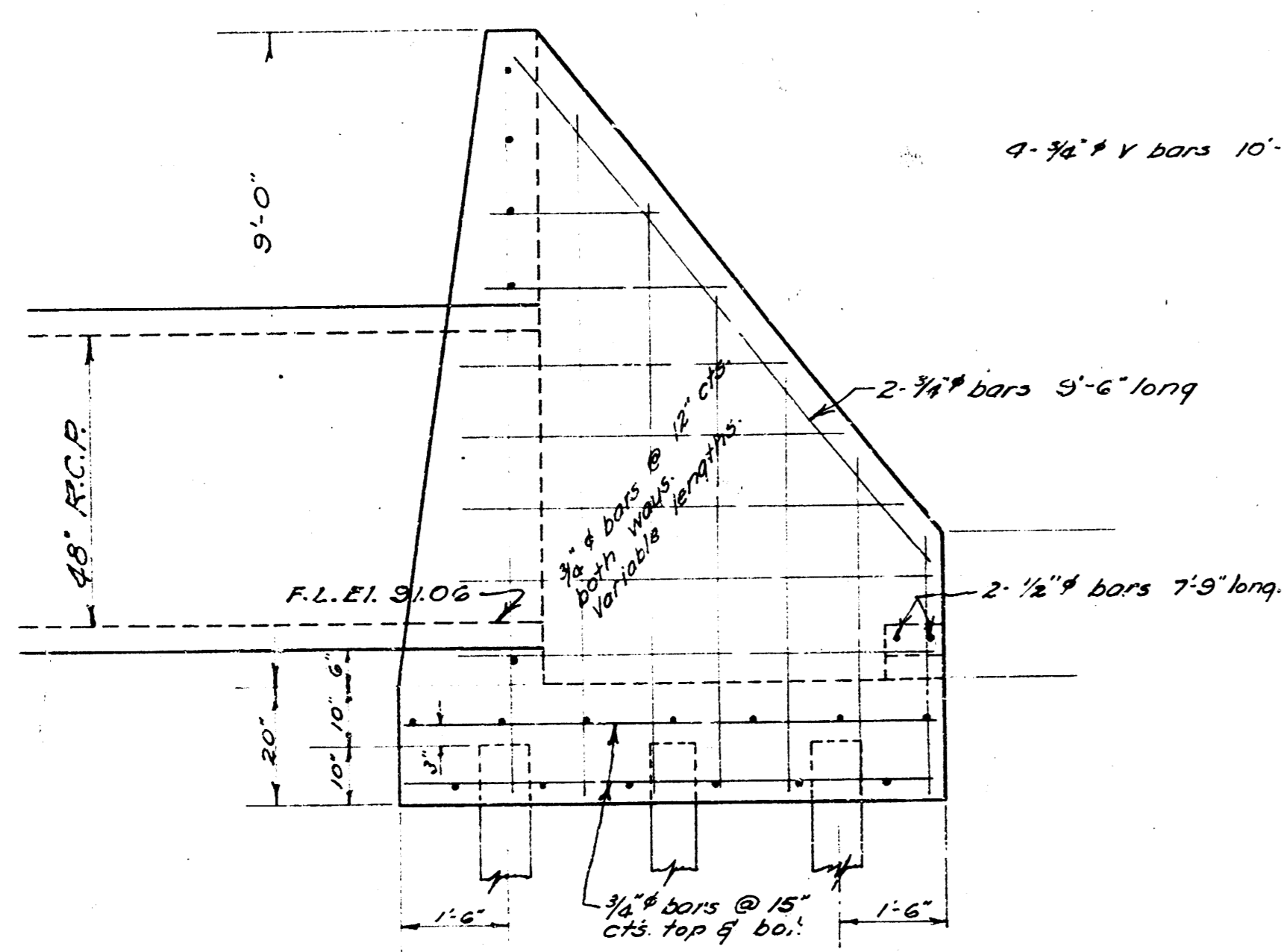
PLAN VIEW



PLAN VIEW



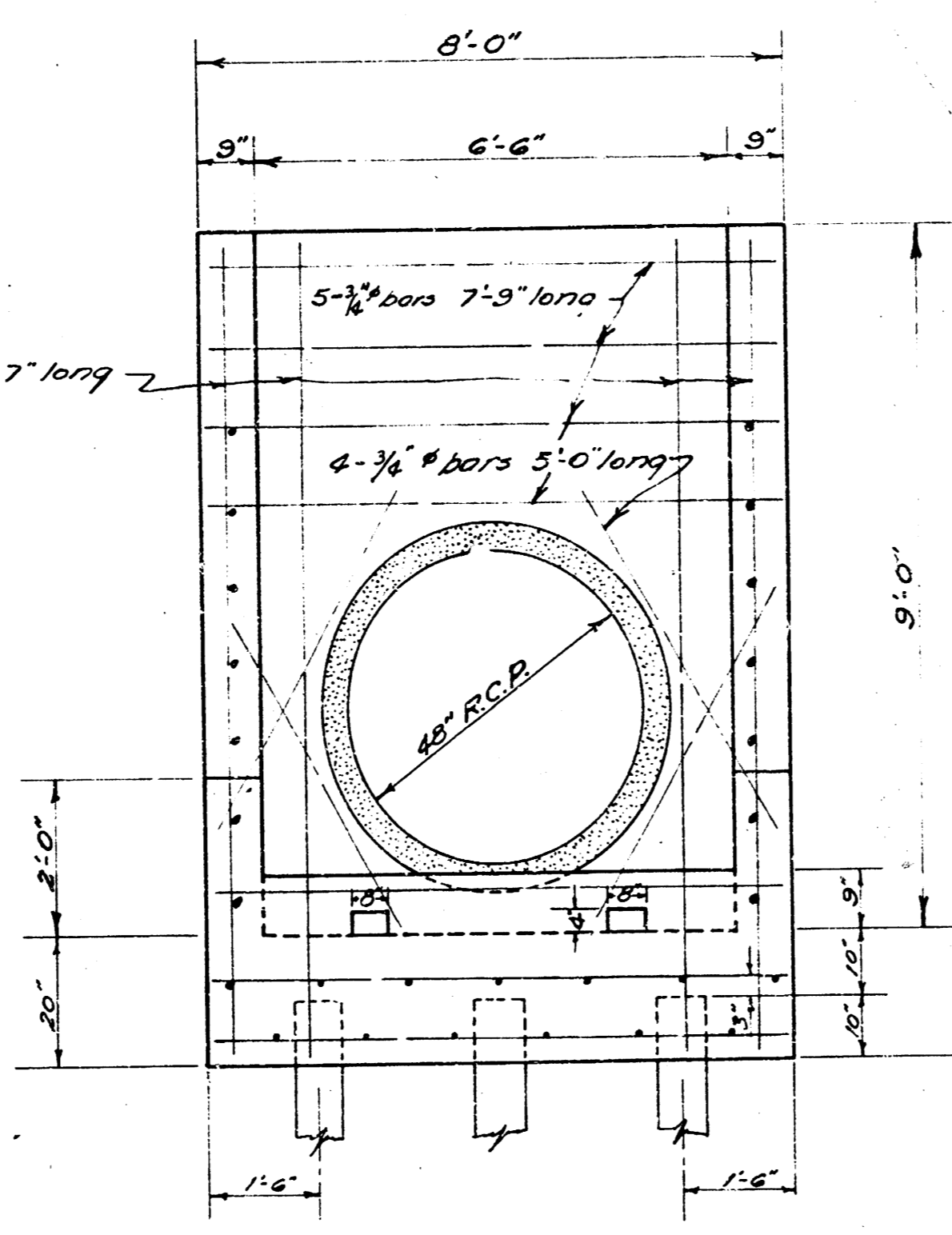
END ELEVATION



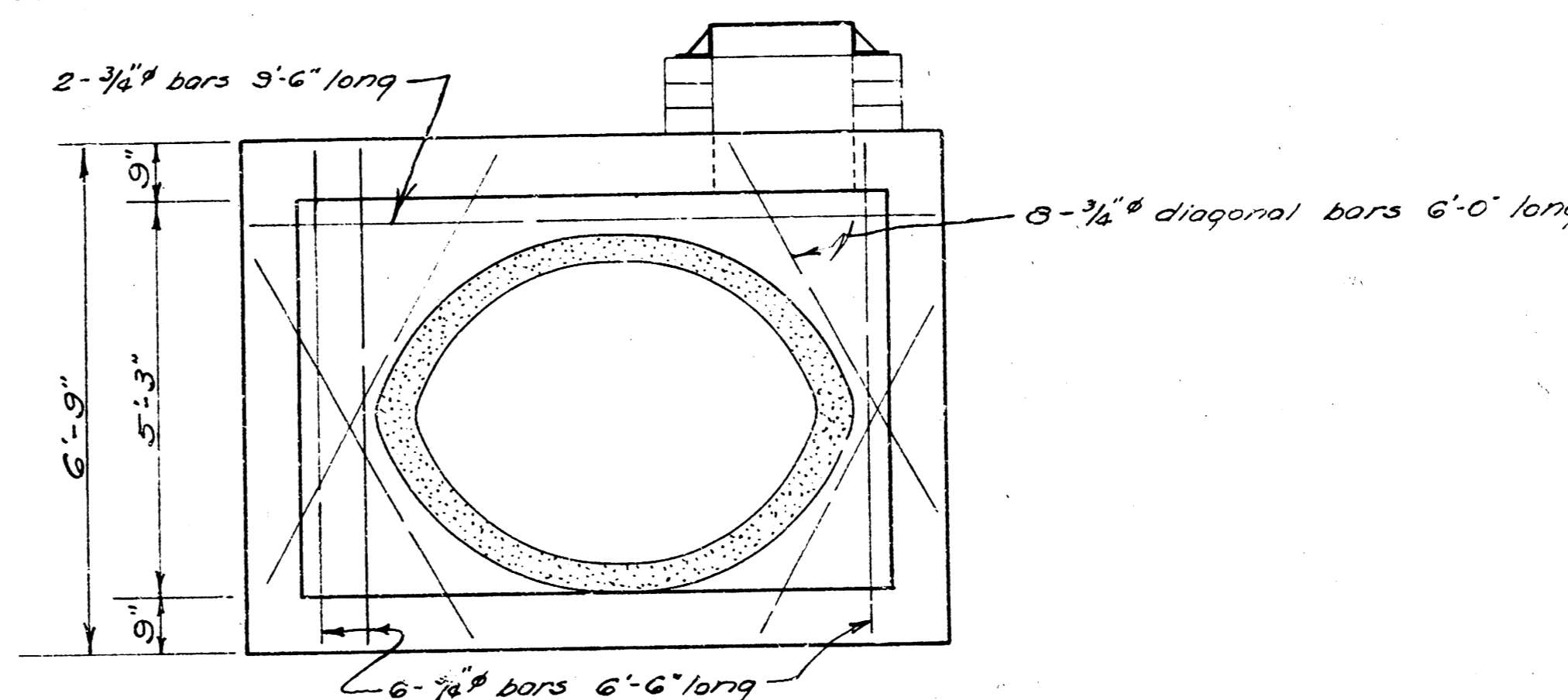
SIDE ELEVATION

OUTFALL STRUCTURE

SCALE: 1/2" = 1'-0"



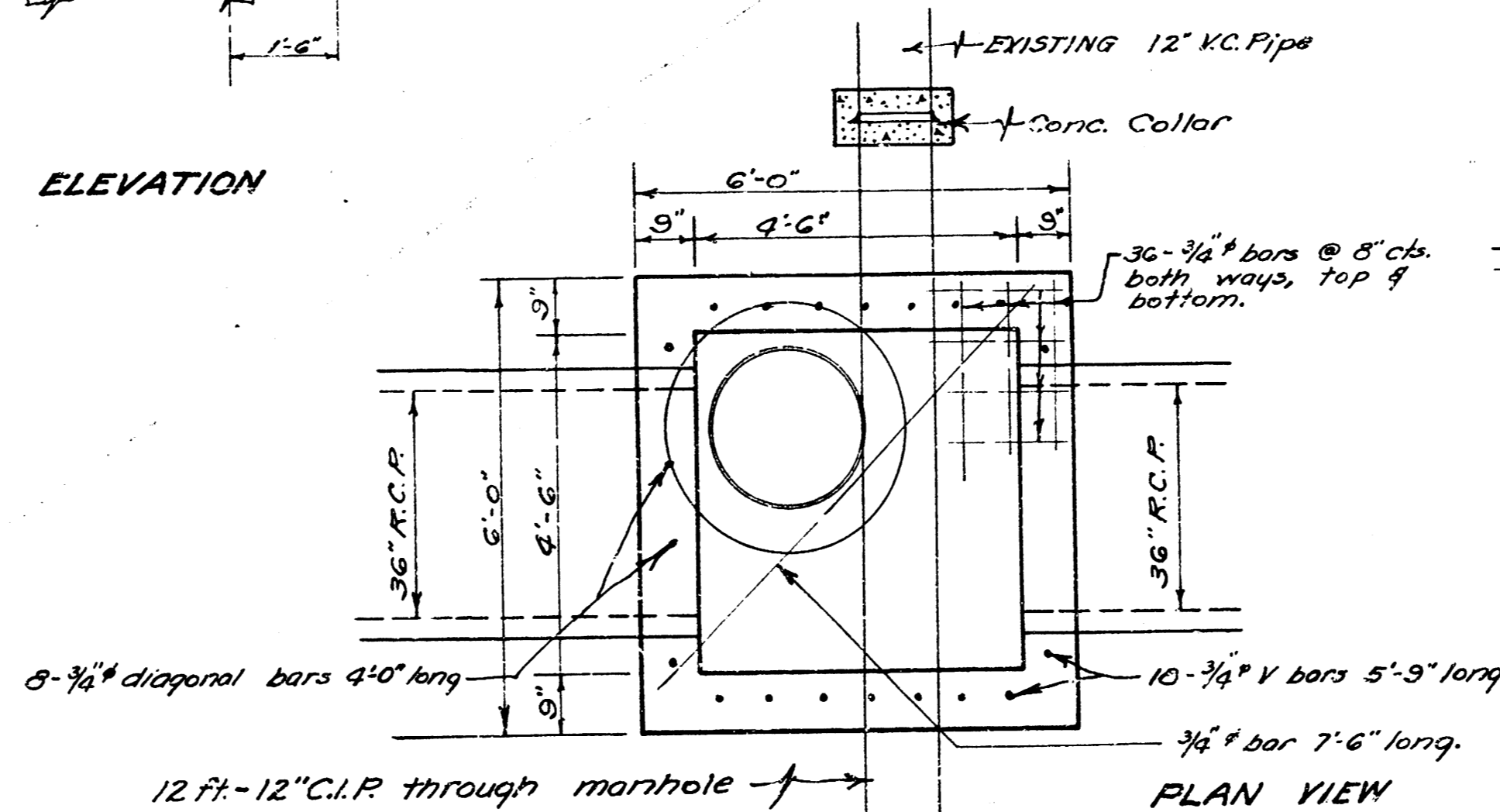
END ELEVATION



SIDE ELEVATION

REINF. CONC. MANHOLE Sta. 10+48 Line 1

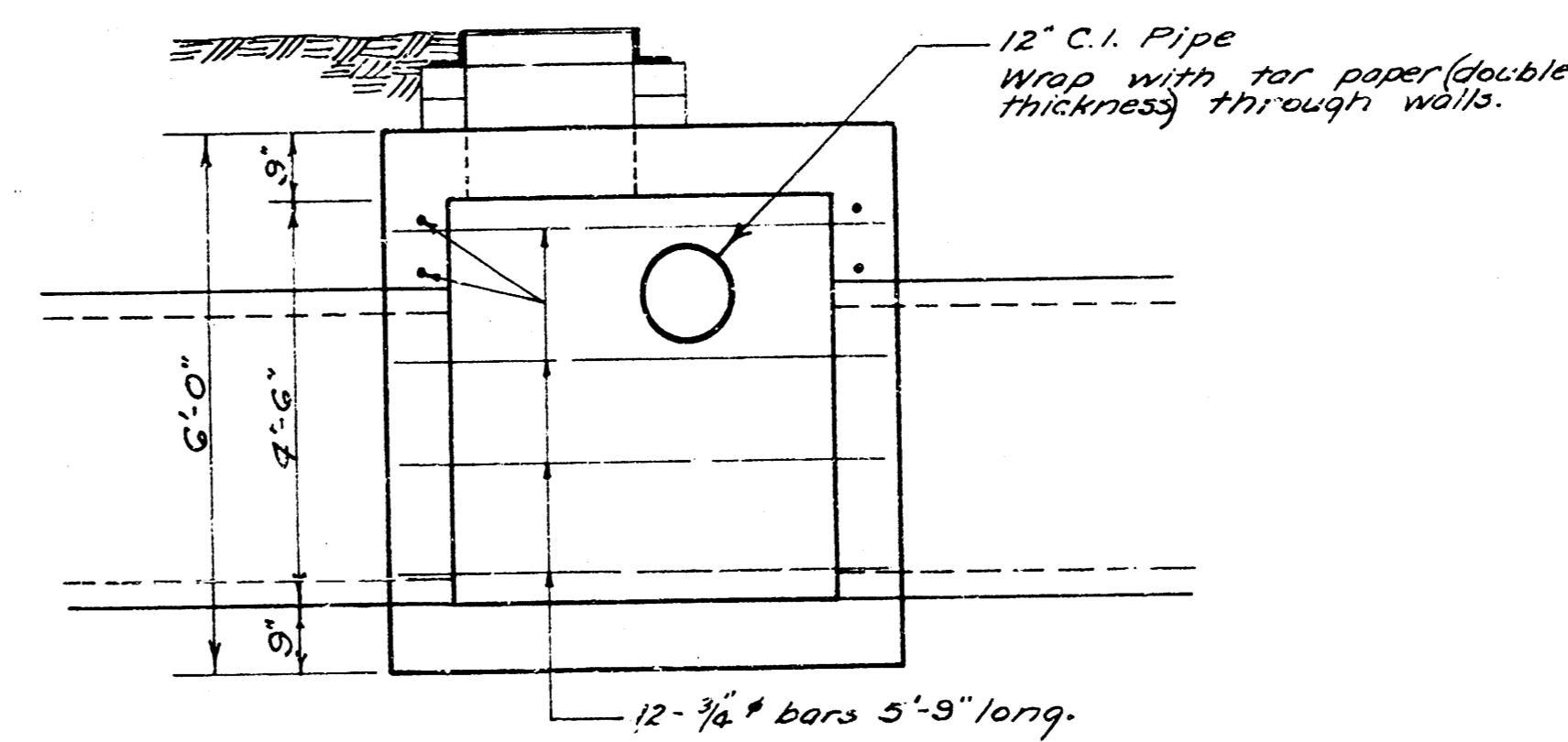
Scale 1/2" = 1'-0"



PLAN VIEW

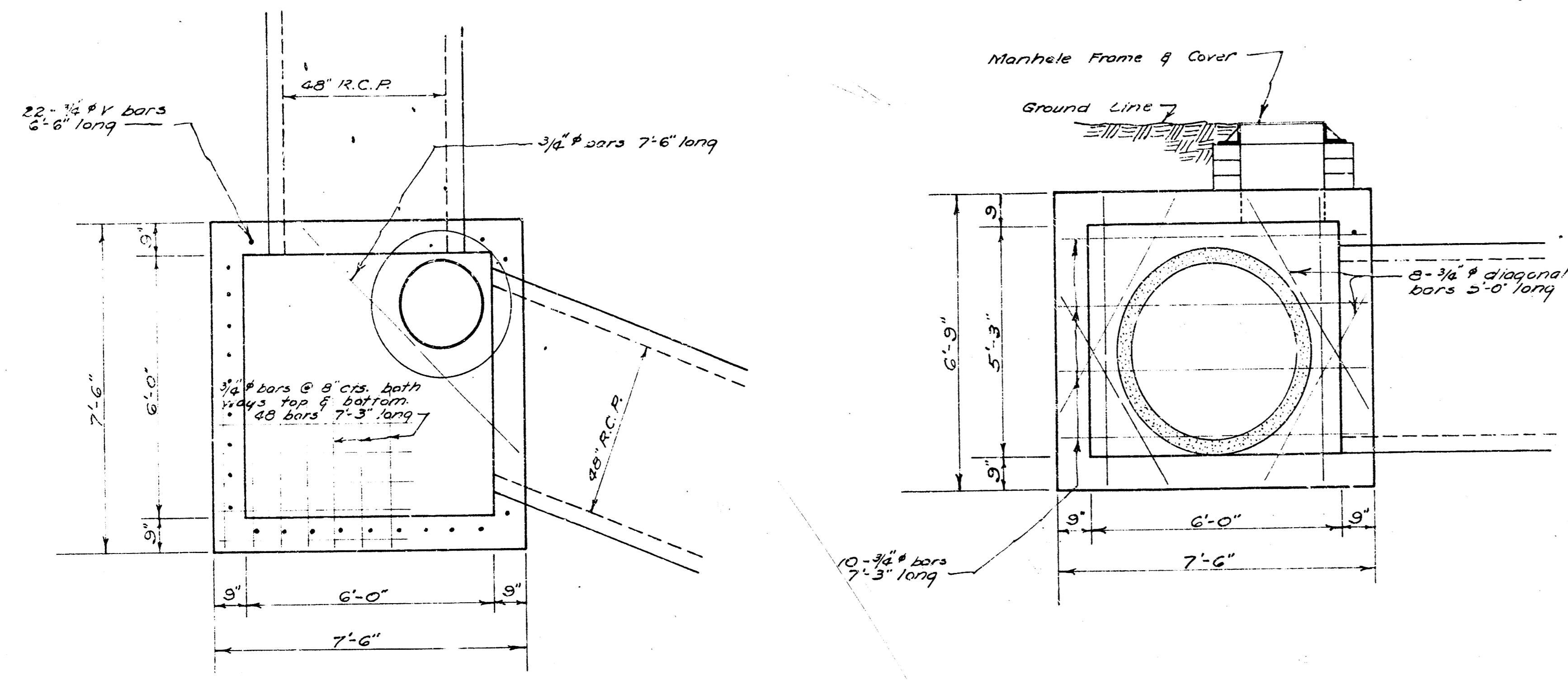
REINF. CONC. MANHOLE Sta. 6+26.2 Line 1A

Scale 1/2" = 1'-0"

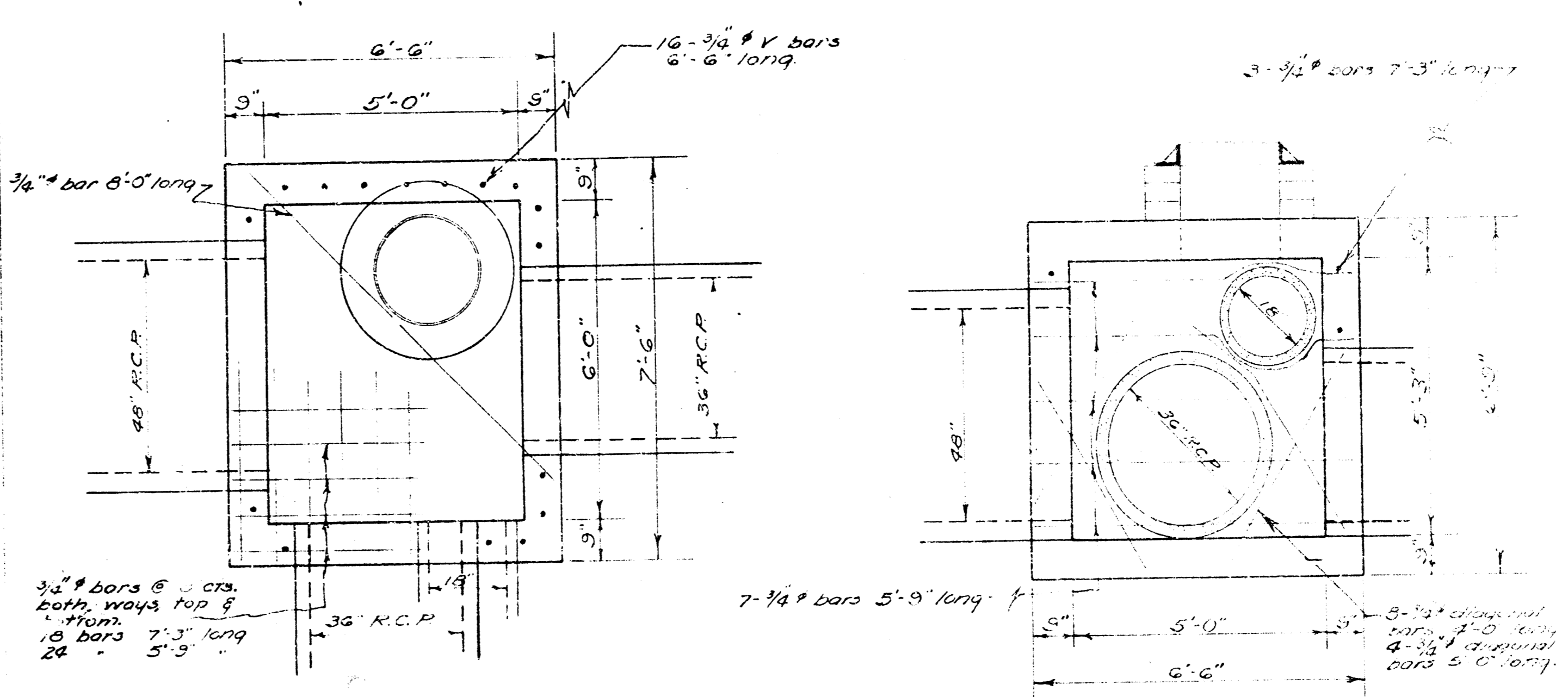


ELEVATION

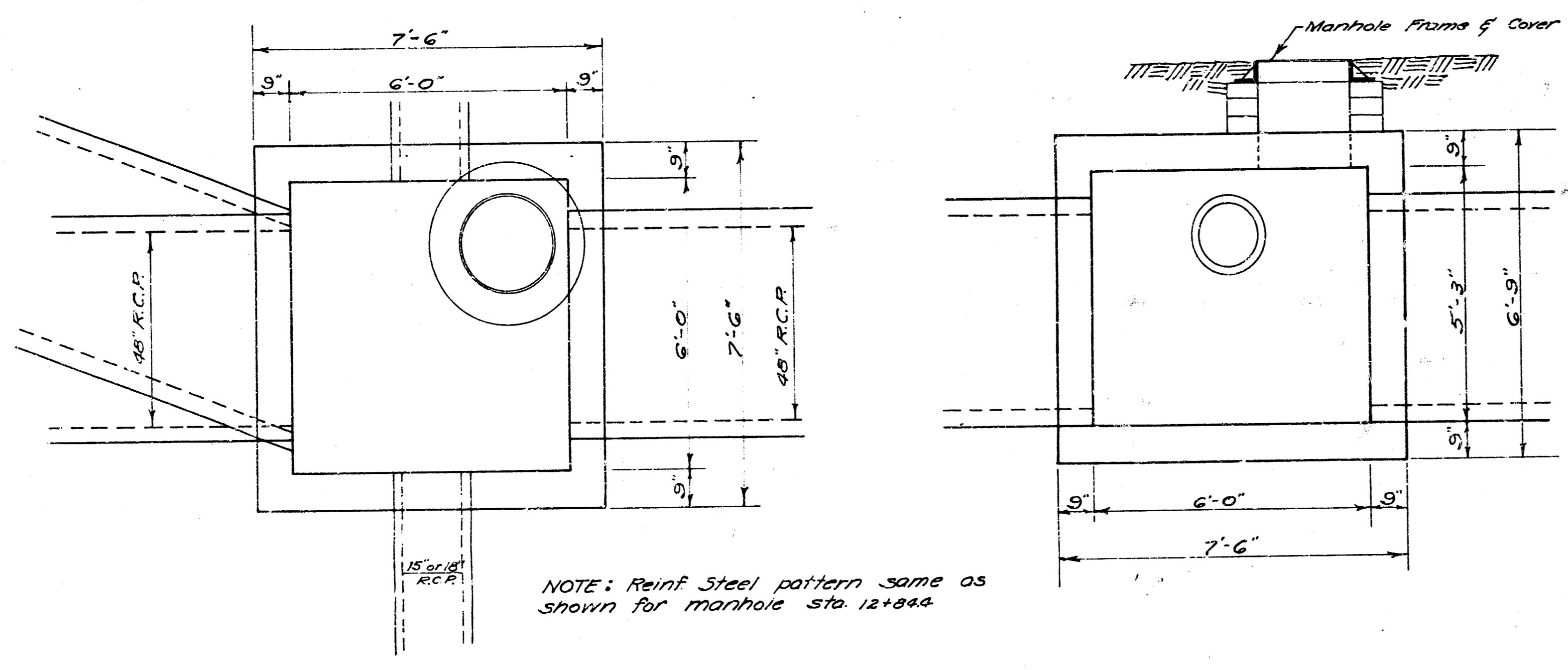
STORM WATER SEWER DIST. NO. 51  
CITY OF WICHITA KANSAS  
L.K. WHITE CITY ENGINEER  
Proj. No. C 22-86  
Date: Oct. 1952



PLAN VIEW  
ELEVATION  
REINF. CONC. MANHOLE Sta. 12+91.2  
SCALE 1/2" = 1'-0"



PLAN VIEW  
ELEVATION  
REINF. CONC. MANHOLE Sta. 33+65.1 Line 1  
Sta. 0+00 Line 1A  
SCALE 1/2" = 1'-0"



PLAN VIEW  
ELEVATION  
NOTE: Reinf Steel pattern same as shown for manhole sta. 12+91.2  
REINF. CONC. MANHOLE Sta. 13+48  
Sta. 16+61.4  
Sta. 21+97.4  
Sta. 25+96.5  
Sta. 30+51.3  
SCALE 1/2" = 1'-0"

Concrete for manholes shall contain not less than 165 bbls. of cement per cu yd. of concrete. In no event shall the total water content exceed 6.25 gals per sack of cement. The mixture of fine and coarse aggregate shall be such as will produce a maximum density of a most workable mixture.

IN GENERAL - Pipes will enter and leave the manholes at various angles and elevations. Where possible bend reinf. bars around pipes (18" diam or less). Where pipes are large use 3/4" diagonal bars as shown.

The floor of the manhole is to be shaped for flow and drainage with concrete. No deduction in concrete quantities shall be made for pipe openings. No addition in concrete quantities shall be made for shaping manhole floor.

An internal vibrator shall be used for placing concrete.

STORM WATER SEWER DIST NO. 51  
CITY OF WICHITA KANSAS  
J. WHITE CITY ENGINEER  
Proj. No. C.22-86  
Date: Oct. 1932  
SHEET NO. 11 of 11