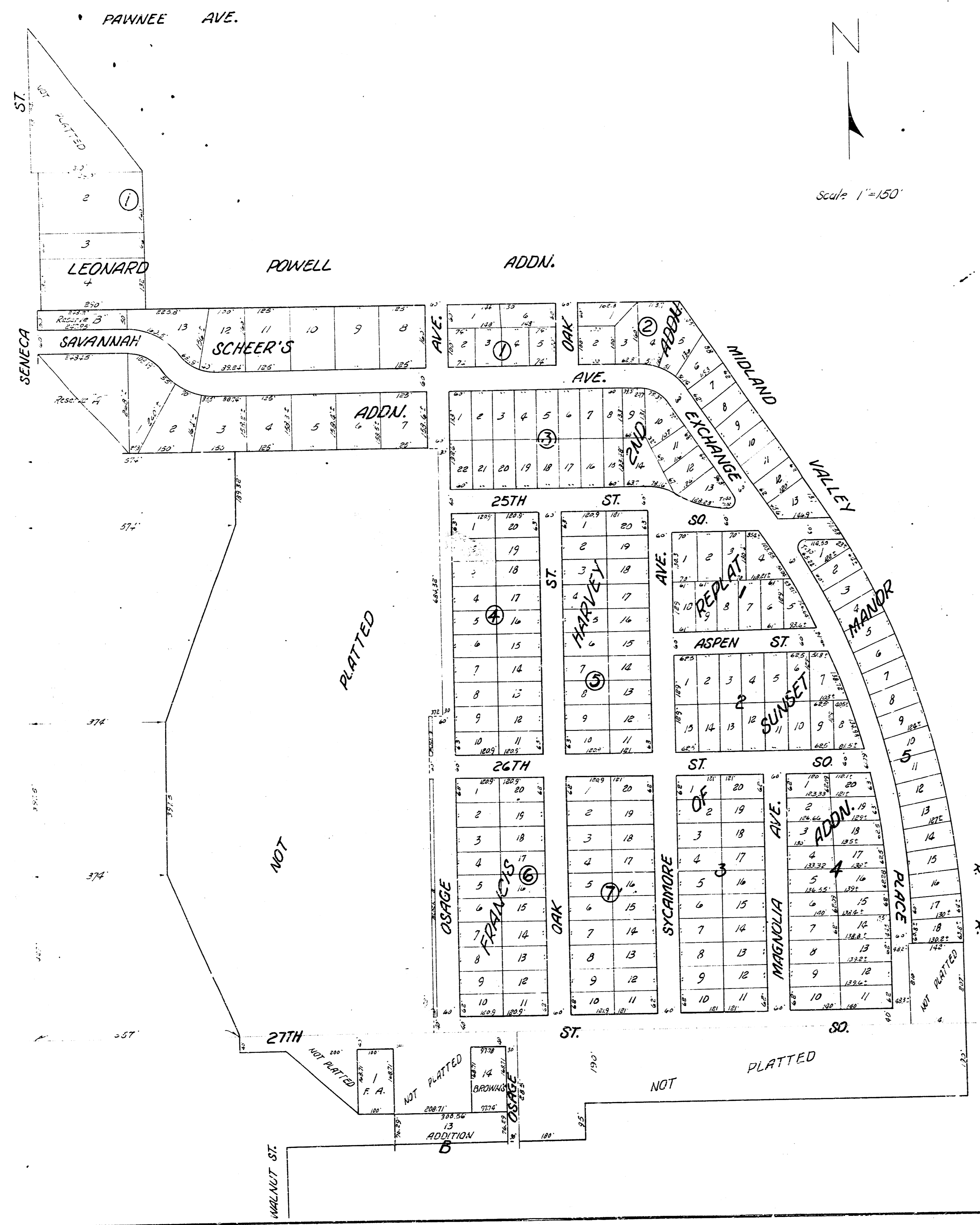


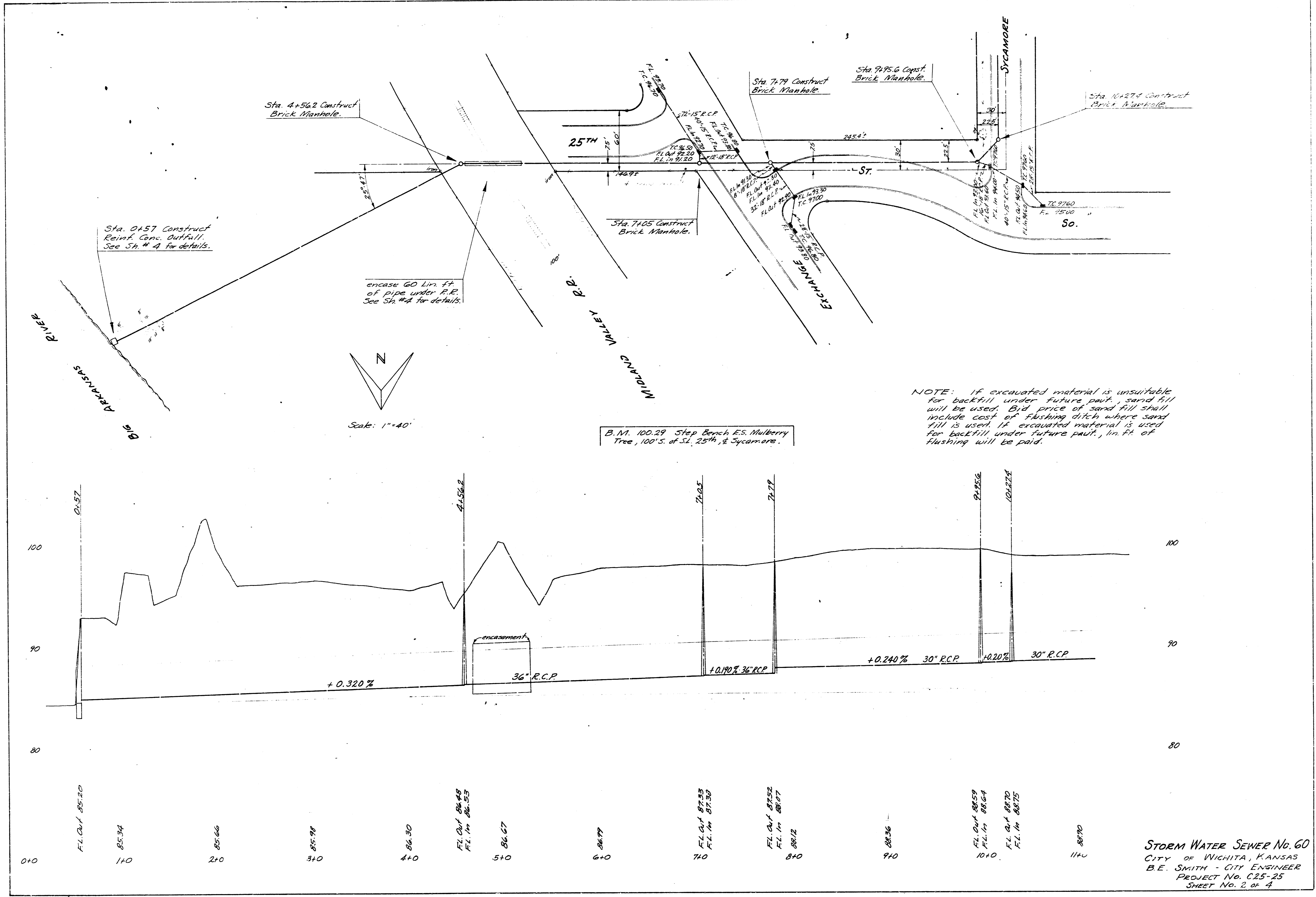
LOCATION MAP
STORM WATER SEWER NO. 60
 CITY OF WICHITA, KANSAS
 B.E. SMITH - CITY ENGINEER
 PROJECT NO. C 25 - 25
 OCTOBER, 1955



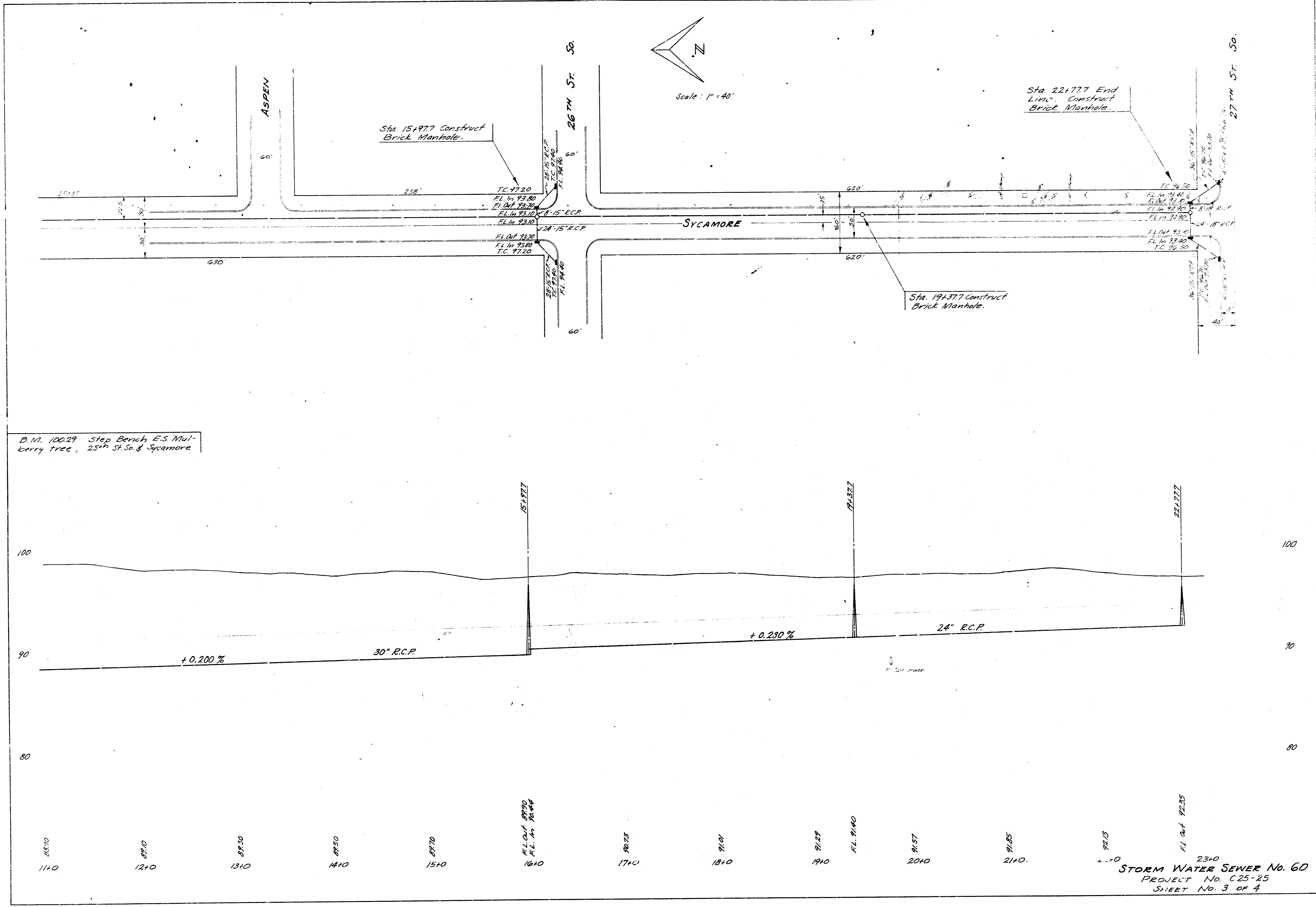
BENEFIT DISTRICT MAP
 STORM WATER SEWER NO. 60
 CITY OF WICHITA, KANSAS
 B. E. SMITH - CITY ENGINEER
 PROJECT NO. C25-25

DEC. 2, 1955

1006, 114, 116, 118, 120, 122, 124, 126, 128, 130, 132, 134, 136, 138, 140, 142, 144, 146, 148, 150, 152, 154, 156, 158, 160, 162, 164, 166, 168, 170, 172, 174, 176, 178, 180, 182, 184, 186, 188, 190, 192, 194, 196, 198, 200, 202, 204, 206, 208, 210, 212, 214, 216, 218, 220, 222, 224, 226, 228, 230, 232, 234, 236, 238, 240, 242, 244, 246, 248, 250, 252, 254, 256, 258, 260, 262, 264, 266, 268, 270, 272, 274, 276, 278, 280, 282, 284, 286, 288, 290, 292, 294, 296, 298, 300, 302, 304, 306, 308, 310, 312, 314, 316, 318, 320, 322, 324, 326, 328, 330, 332, 334, 336, 338, 340, 342, 344, 346, 348, 350, 352, 354, 356, 358, 360, 362, 364, 366, 368, 370, 372, 374, 376, 378, 380, 382, 384, 386, 388, 390, 392, 394, 396, 398, 400, 402, 404, 406, 408, 410, 412, 414, 416, 418, 420, 422, 424, 426, 428, 430, 432, 434, 436, 438, 440, 442, 444, 446, 448, 450, 452, 454, 456, 458, 460, 462, 464, 466, 468, 470, 472, 474, 476, 478, 480, 482, 484, 486, 488, 490, 492, 494, 496, 498, 500, 502, 504, 506, 508, 510, 512, 514, 516, 518, 520, 522, 524, 526, 528, 530, 532, 534, 536, 538, 540, 542, 544, 546, 548, 550, 552, 554, 556, 558, 560, 562, 564, 566, 568, 570, 572, 574, 576, 578, 580, 582, 584, 586, 588, 590, 592, 594, 596, 598, 600, 602, 604, 606, 608, 610, 612, 614, 616, 618, 620, 622, 624, 626, 628, 630, 632, 634, 636, 638, 640, 642, 644, 646, 648, 650, 652, 654, 656, 658, 660, 662, 664, 666, 668, 670, 672, 674, 676, 678, 680, 682, 684, 686, 688, 690, 692, 694, 696, 698, 700, 702, 704, 706, 708, 710, 712, 714, 716, 718, 720, 722, 724, 726, 728, 730, 732, 734, 736, 738, 740, 742, 744, 746, 748, 750, 752, 754, 756, 758, 760, 762, 764, 766, 768, 770, 772, 774, 776, 778, 780, 782, 784, 786, 788, 790, 792, 794, 796, 798, 800, 802, 804, 806, 808, 810, 812, 814, 816, 818, 820, 822, 824, 826, 828, 830, 832, 834, 836, 838, 840, 842, 844, 846, 848, 850, 852, 854, 856, 858, 860, 862, 864, 866, 868, 870, 872, 874, 876, 878, 880, 882, 884, 886, 888, 890, 892, 894, 896, 898, 900, 902, 904, 906, 908, 910, 912, 914, 916, 918, 920, 922, 924, 926, 928, 930, 932, 934, 936, 938, 940, 942, 944, 946, 948, 950, 952, 954, 956, 958, 960, 962, 964, 966, 968, 970, 972, 974, 976, 978, 980, 982, 984, 986, 988, 990, 992, 994, 996, 998, 1000



STORM WATER SEWER No. 60
 CITY OF WICHITA, KANSAS
 B.E. SMITH - CITY ENGINEER
 PROJECT No. C25-25
 SHEET No. 2 of 4

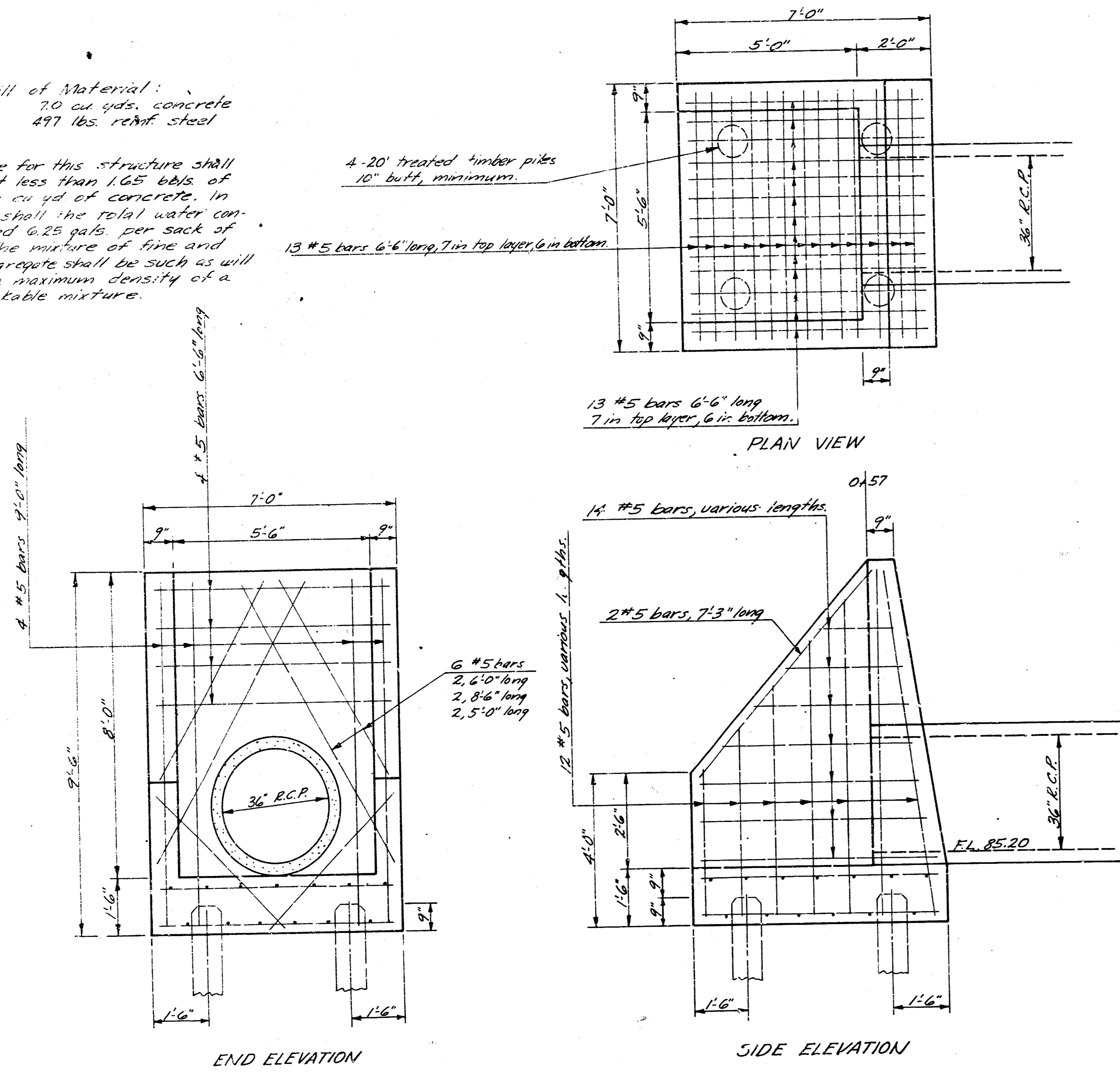


B.M. 100.29 Step Bench E.S. Mulberry tree, 25th St. So. & Sycamore

STORM WATER SEWER No. 60
 PROJECT No. C25-25
 SHEET No. 3 OF 4

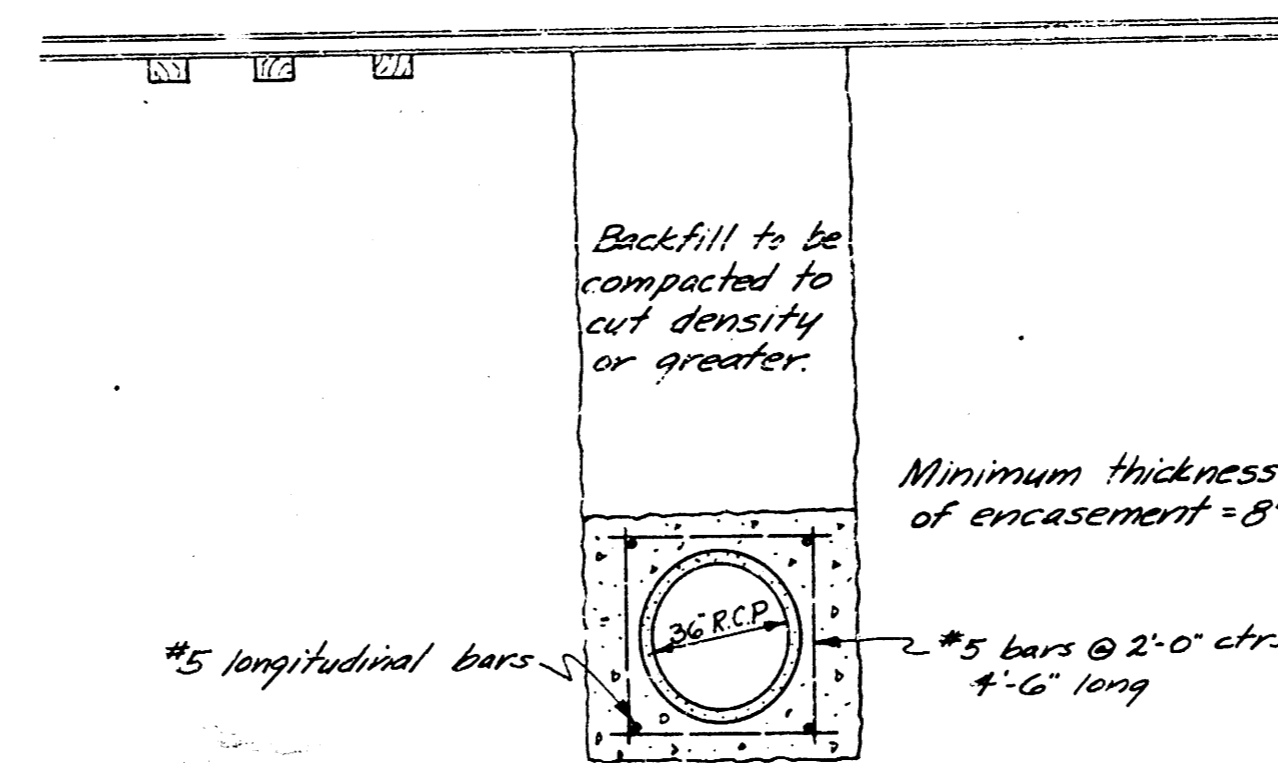
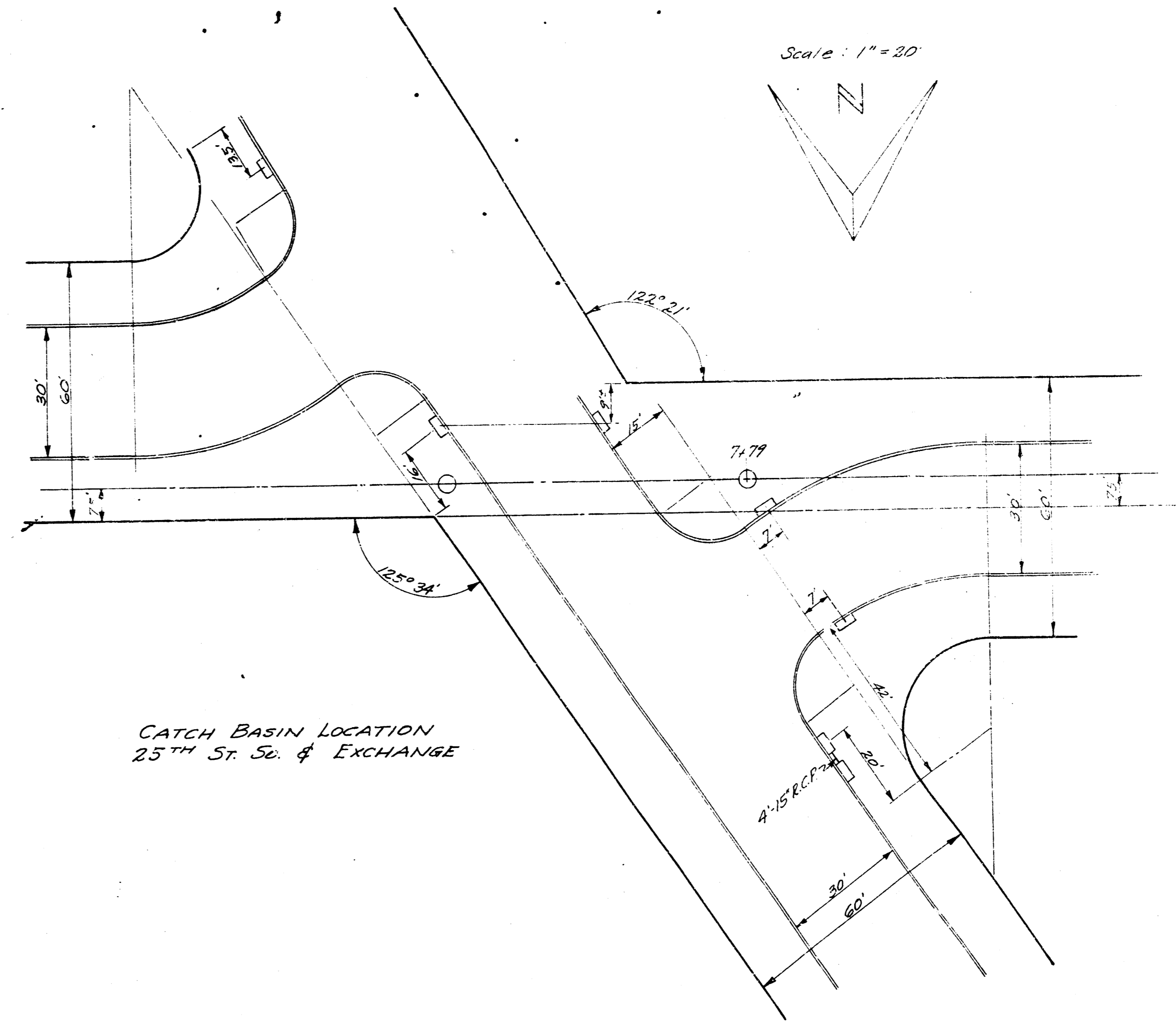
Bill of Material:
 70 cu yds. concrete
 497 lbs. reinf. steel

Concrete for this structure shall contain not less than 165 lbs. of cement per cu yd. of concrete. In no event shall the rel. water content exceed 0.25 ratio per sack of cement. The mixture of fine and coarse aggregate shall be such as will produce a maximum density of a most workable mixture.



REINF. CONC. OUTFALL STRUCTURE - STA. 0+57

Scale: 1/2" = 1'-0"



TYPICAL SECTION
 REINF. CONC. ENCASUREMENT
 UNDER MIDLAND VALLEY R.R.

Pipe is to be installed by open ditch method with tracks removed during hours which will not disrupt train traffic. The contractor shall give proper notice to the R.R. to provide flagmen, etc., while the crossing is being made. The expense of removing and replacing tracks, and all other charges made by the R.R. will be paid by the contractor. E.R. charges, cost of concrete and reinf. steel, and all other extra charges of crossing shall be included in the lump sum bid of reinf. conc. R.R. crossing.
 6 sack paving mix is to be used for encasement concrete.