

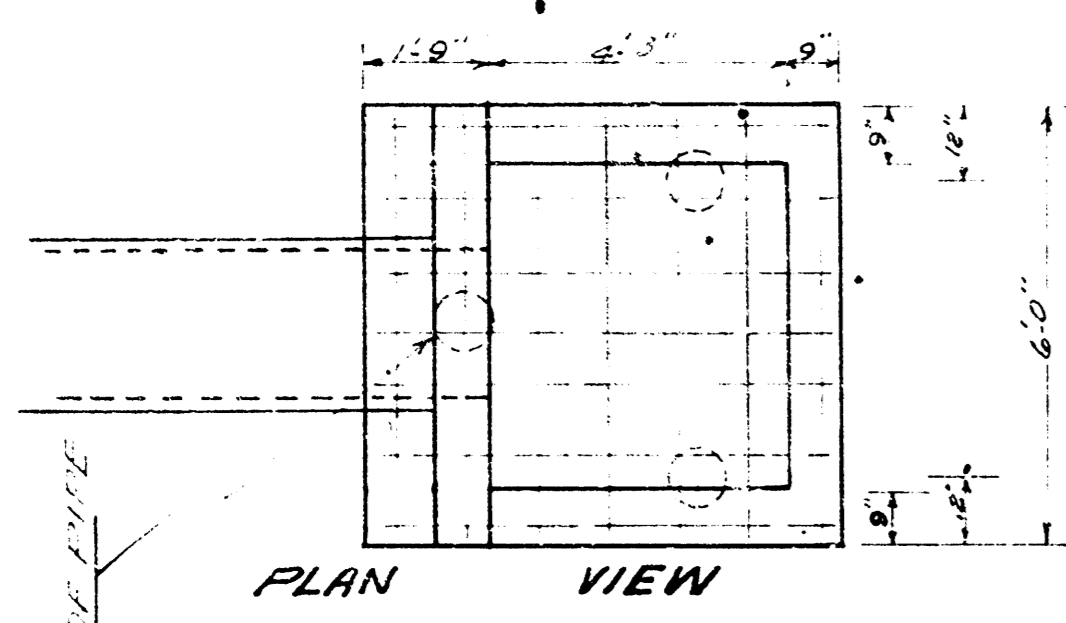
STORM WATER SEWER  
 BENEFIT DISTRICT NO. 58.  
 CITY OF WICHITA KANS.

B.E. SMITH CITY ENGINEER

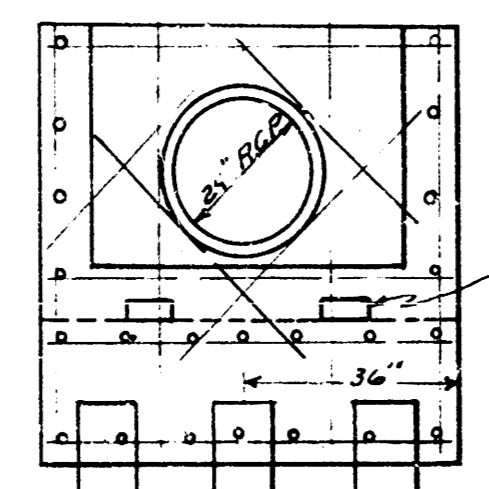
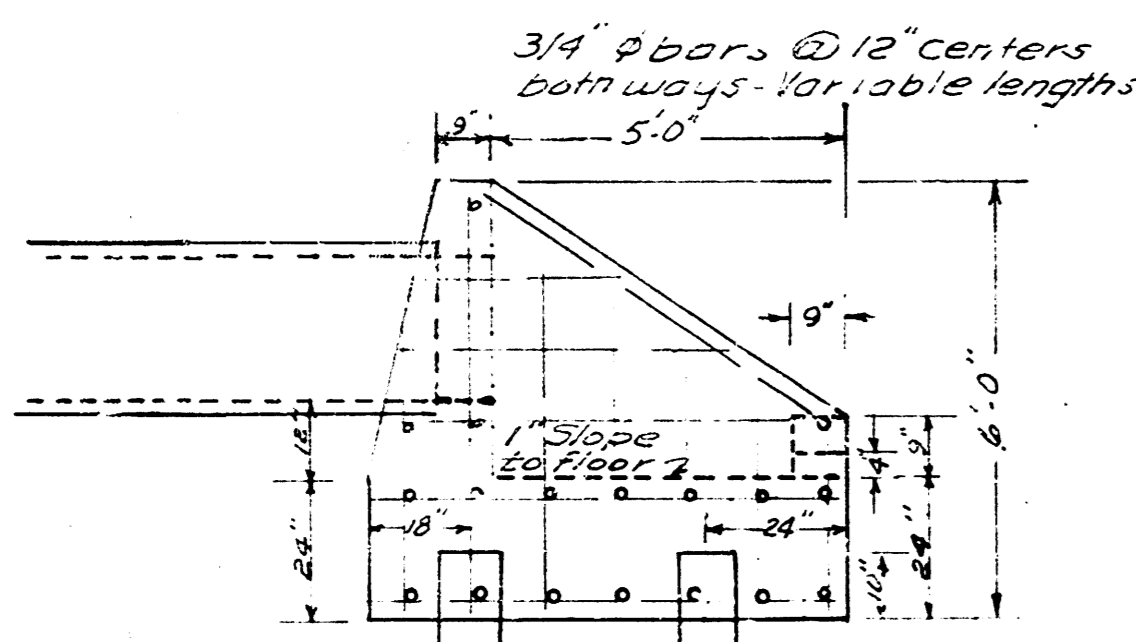
PROJ. NO. C-24-44.

**REIN. CONCRETE OUTFALL STRUCTURE**

2" x 25' Piling (Treated)  
12" Min. Spacing

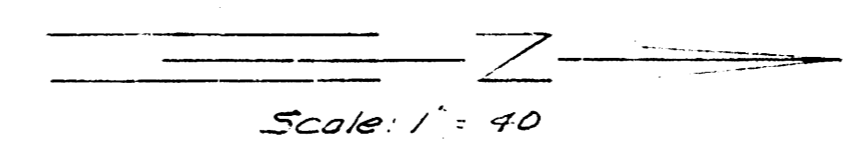
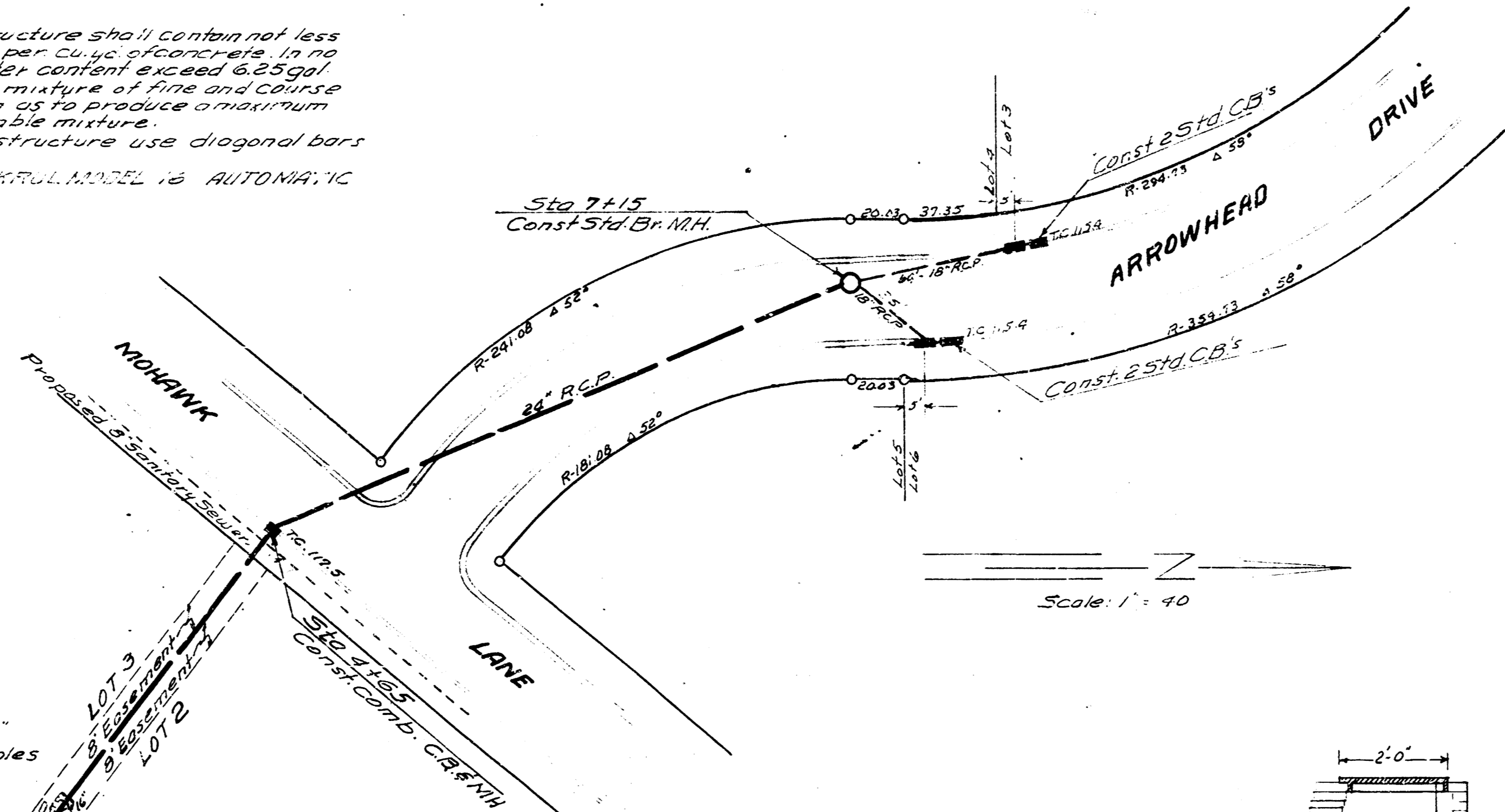


Concrete for outfall structure shall contain not less than 145 lbs of cement per cubic yard of concrete. In no event shall the total water content exceed 6.25 gal per sack of cement. The mixture of fine and coarse aggregate shall be such as to produce a maximum density, a most workable mixture. Where pipe enters the structure use diagonal bars to show on plan. Install spigot door PERKINS MODEL 12 AUTOMATIC FLAP GATE.

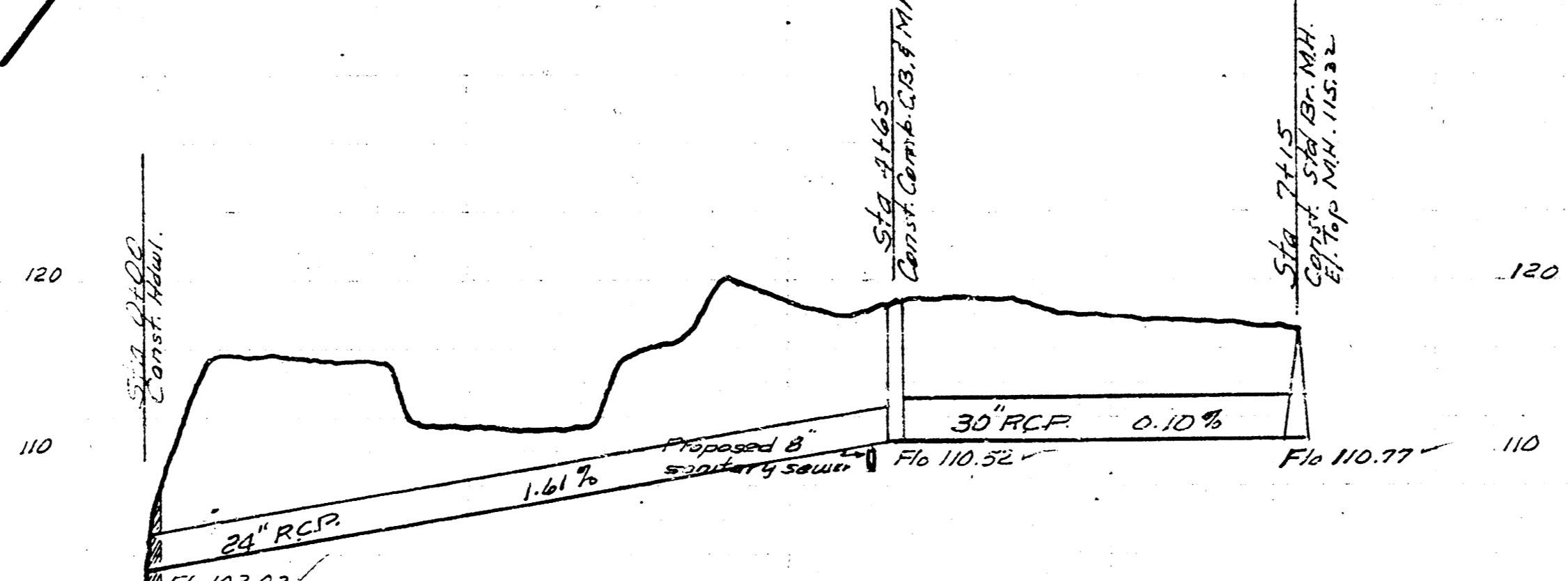


SIDE ELEVATION

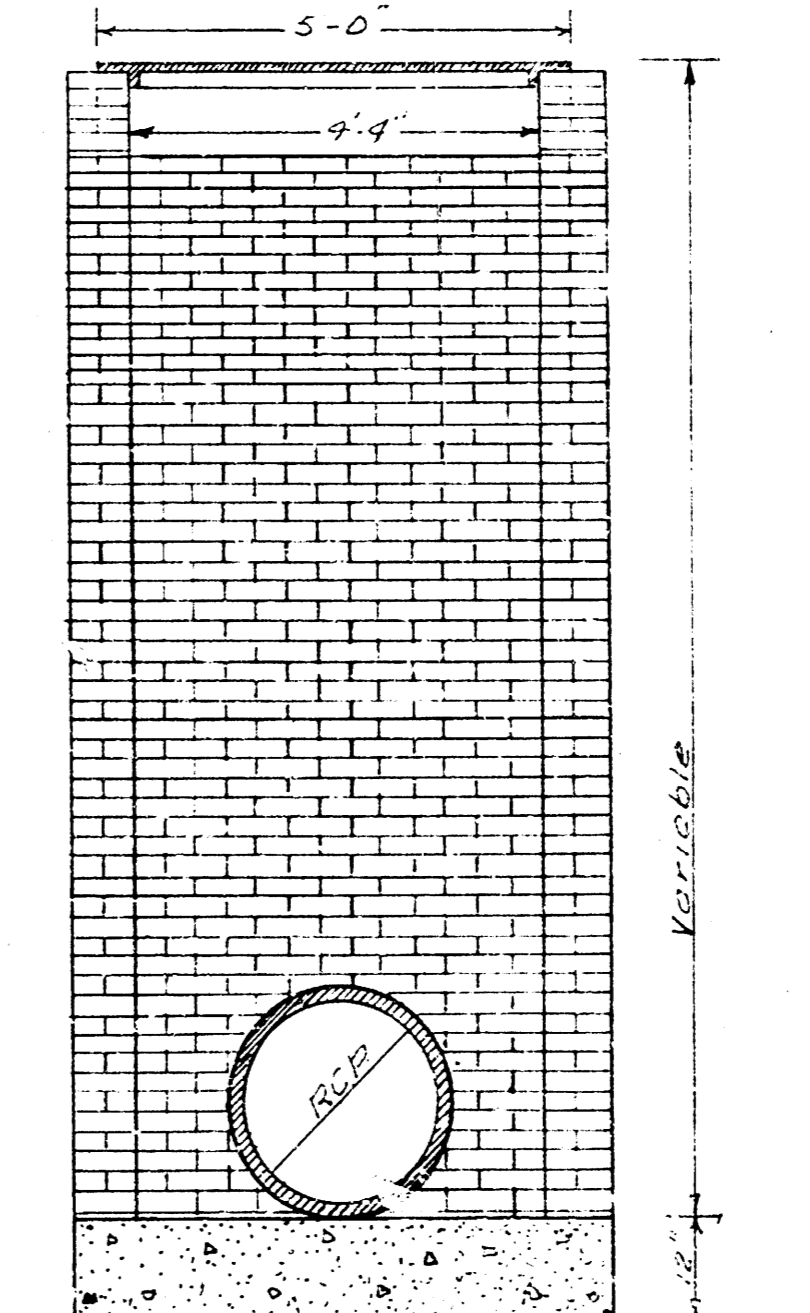
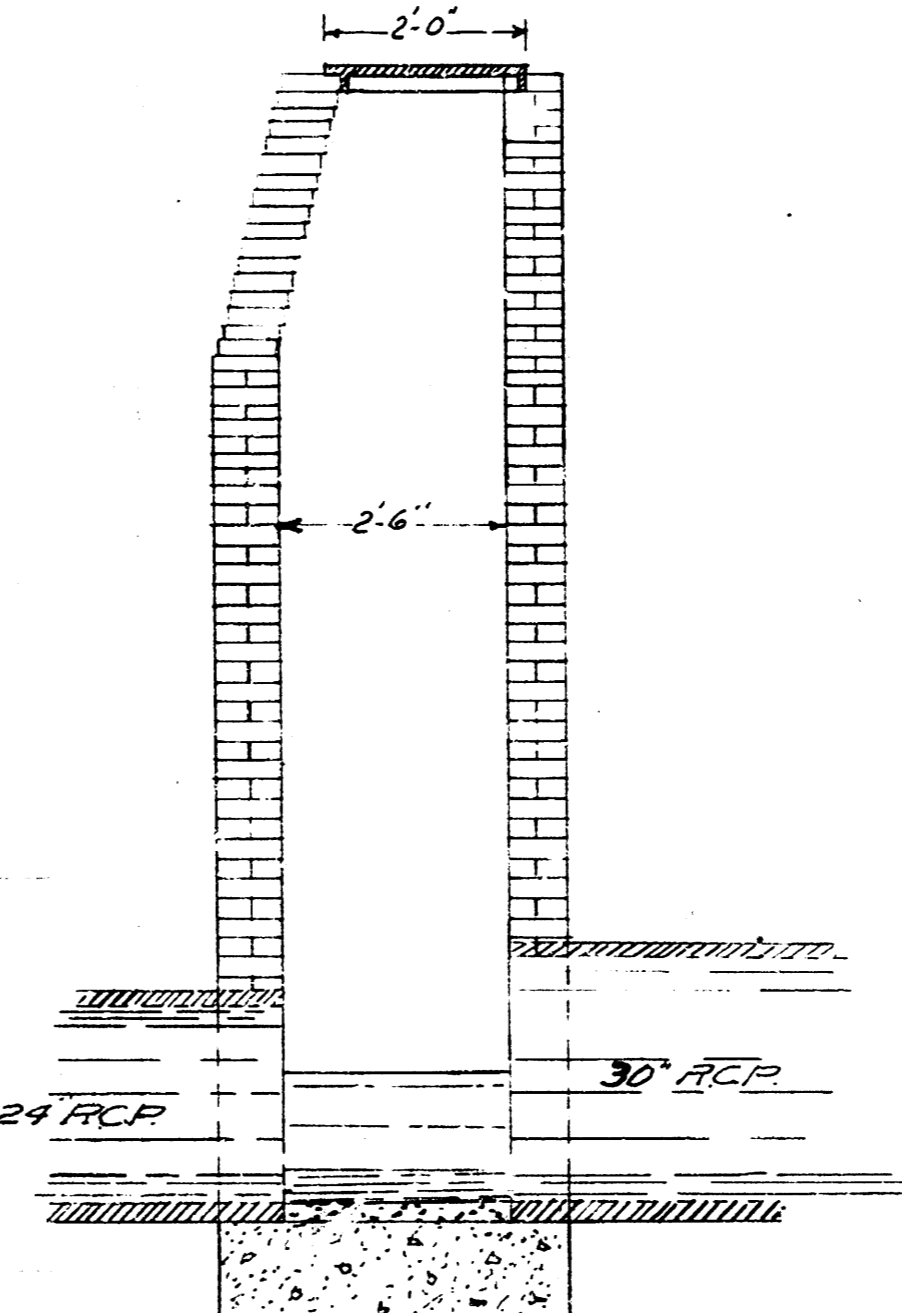
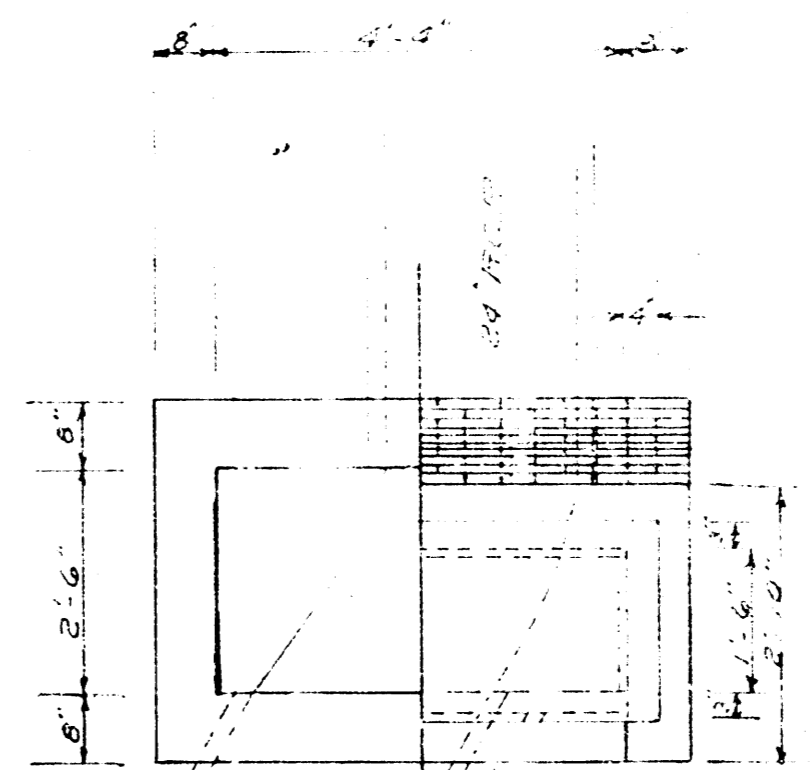
END ELEVATION



BM. 119.45 7' TOP CURB S. END RAD. SW COR. ARROWHEAD # 13 TH.



Note - Sta 4+65 to 7+15 use excavated material for backfill & flush if sand content is suitable otherwise use sand for backfill.



DETAIL OF COMBINATION MANHOLE & CATCH BASIN

Drafted by  
 Checked by  
 Approved by  
 Date: 7-1-44

STORM WATER SEWER No. 58  
 CITY OF WICHITA KANSAS  
 B. SMITH CITY ENGINEER  
 Proj. No. C-24-44