

BENJAMIN

BOBWHITE

BULLINGER

DRIVE

ROAD

DOGWOOD

MARIGOLD

SWEETBRIAR

Sta. 21+77.63
End Line #1

LINE NO. 1

RICHMOND

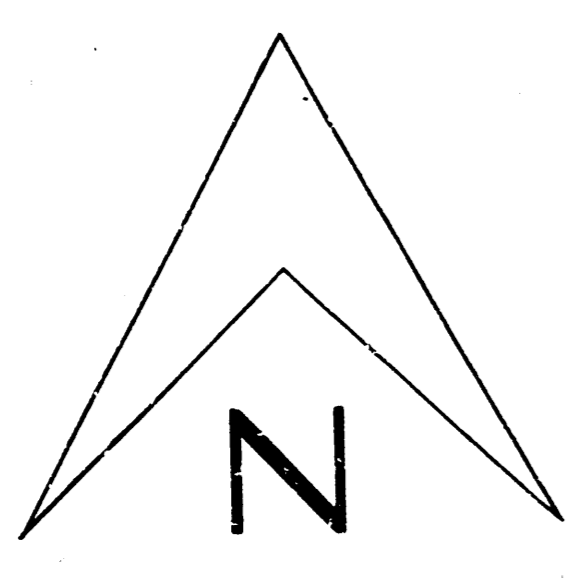
21ST

LINE NO. 2

ST.

Sta. 13+85.8 Line #1
Sta. 0+00 Line #2

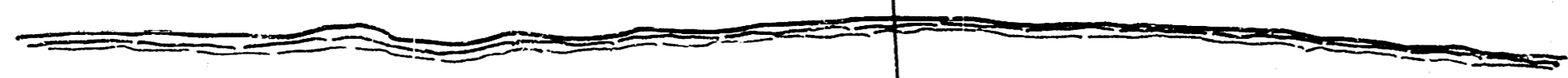
Sta. 7+09.5
End Line #2



LOCATION MAP
STORM WATER SEWER NO. 65
CITY OF WICHITA , KANSAS
B.E. SMITH - CITY ENGINEER
PROJECT NO. C26-17
JULY , 1956

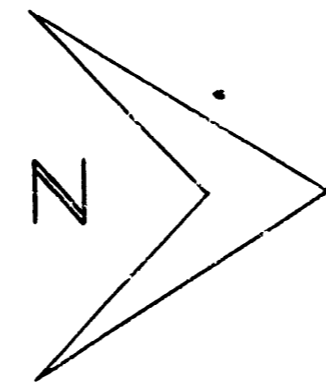
LINE NO. 1

Sta. 1+34.5 Begin
Line #1



BIG ARKANSAS RIVER

BIG ARKANSAS RIVER



Scale: 1" = 40'

Sta. 1+345 Line #1
Construct ramp,
conc. outfall structure.
See Sh #4 for detail.

1+892.5' cut on M.H. on E. 6th P.M. 15' W.

10' woven fence
4' strand fence

20' Easement
20' Temporary Easement

Sta. 6+60 Construct
brick manhole.

Sta. 11+85.4 Construct
brick manhole.

21st ST.

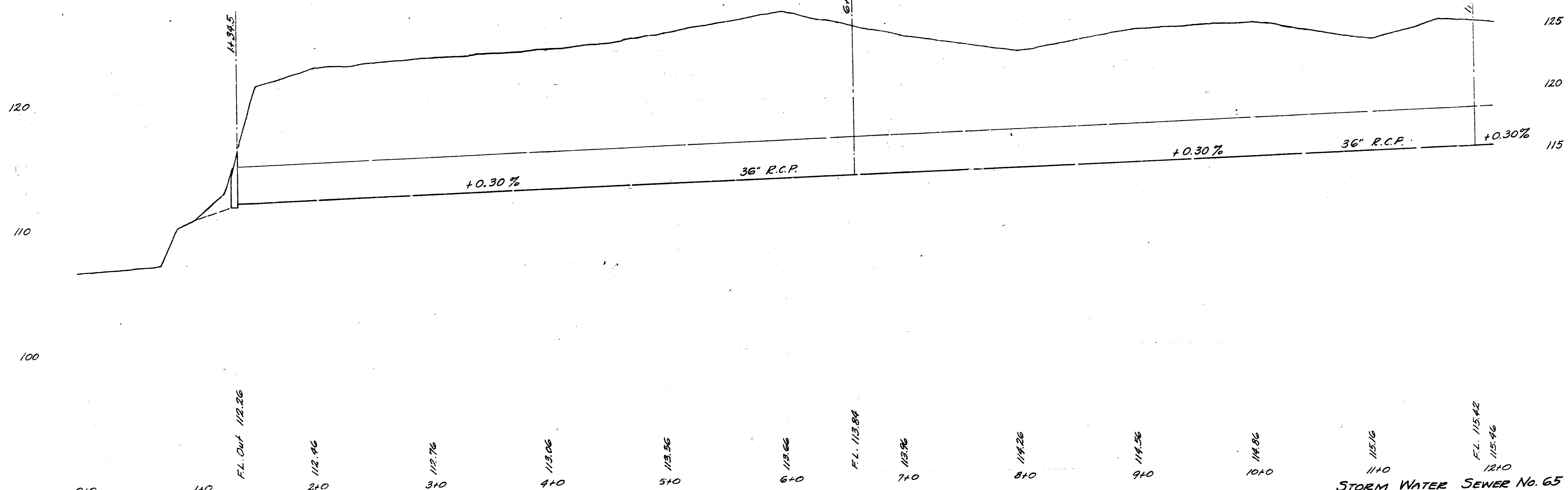
6th P.M.

NOTE: The following locations must be sand
filled if the excavated material is unsuitable for
backfill. Bid price of sand fill shall include
cost of flushing ditch where sand fill is used.
If excavated material is used at the following
locations, lin. ft. of flushing will be paid.
Line #1: 1+57 to 1+80, 13+12 to 2+77
Line #2: 0+00 to 0+26, 3+47 to 3+88
Catch Basin leads under future part.

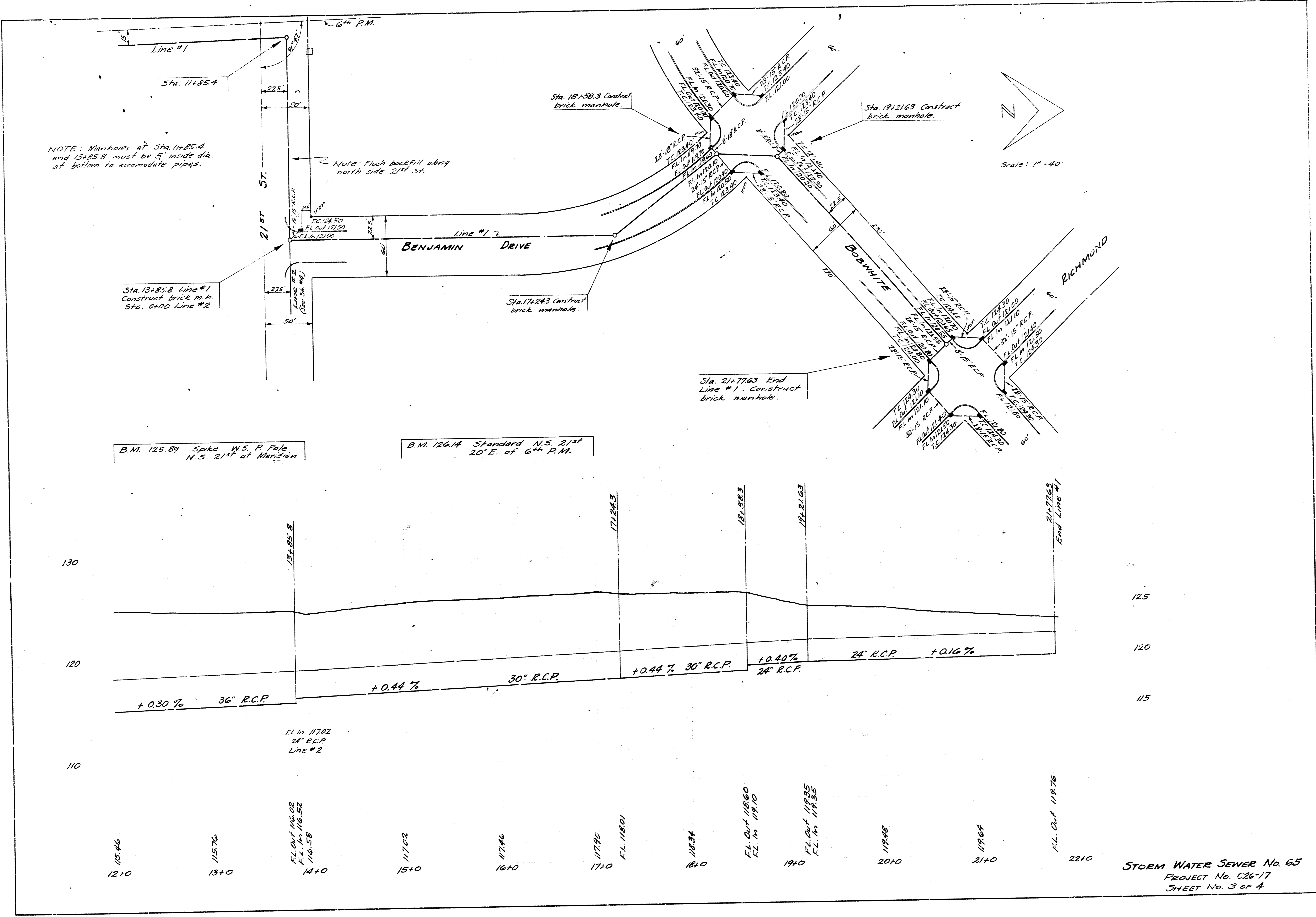
B.M. 123.85' on Conc. M.H. & Meridian
No. Bank Arkansas River

B.M. 125.89 3rd & W.S. P. Pole
N.S. 21st @ Meridian

B.M. 126.14 Standard N.S. 21st
20' E. of 6th P. Meridian



STORM WATER SEWER No. 65
PROJECT No. C26-17
SHEET No. 2 OF 4



NOTE: Manholes at Sta. 11+85.4 and 13+85.8 must be 5' inside dia. at bottom to accommodate pipes.

Note: Flush bedfill along north side 21st St.

Scale: 1" = 40'

B.M. 125.89 Spike W.S.P. Pole N.S. 21st at Meridian

B.M. 126.14 Standard N.S. 21st 20' E. of 6th P.M.

STORM WATER SEWER No. 65
 PROJECT No. C26-17
 SHEET No. 3 of 4

