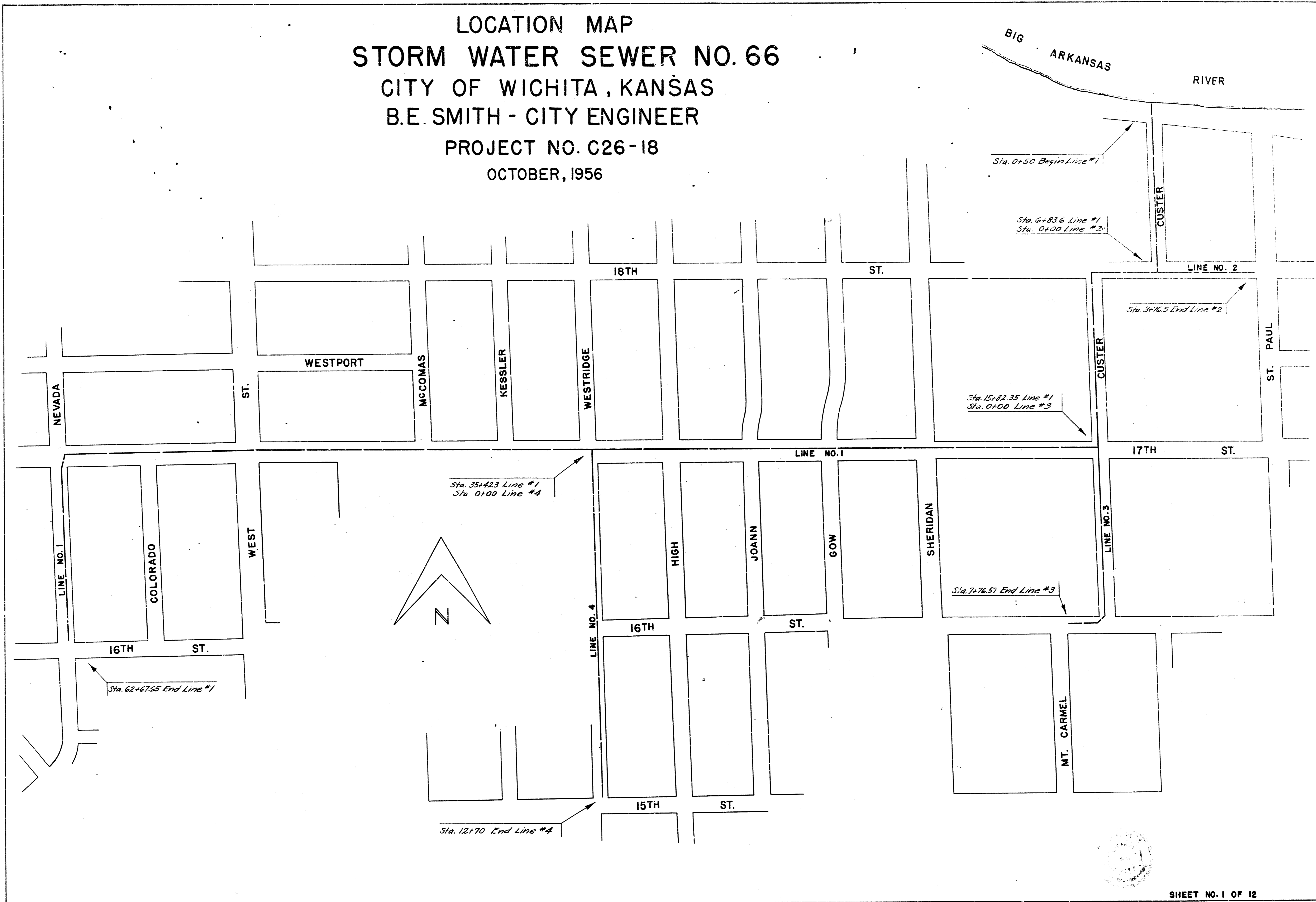
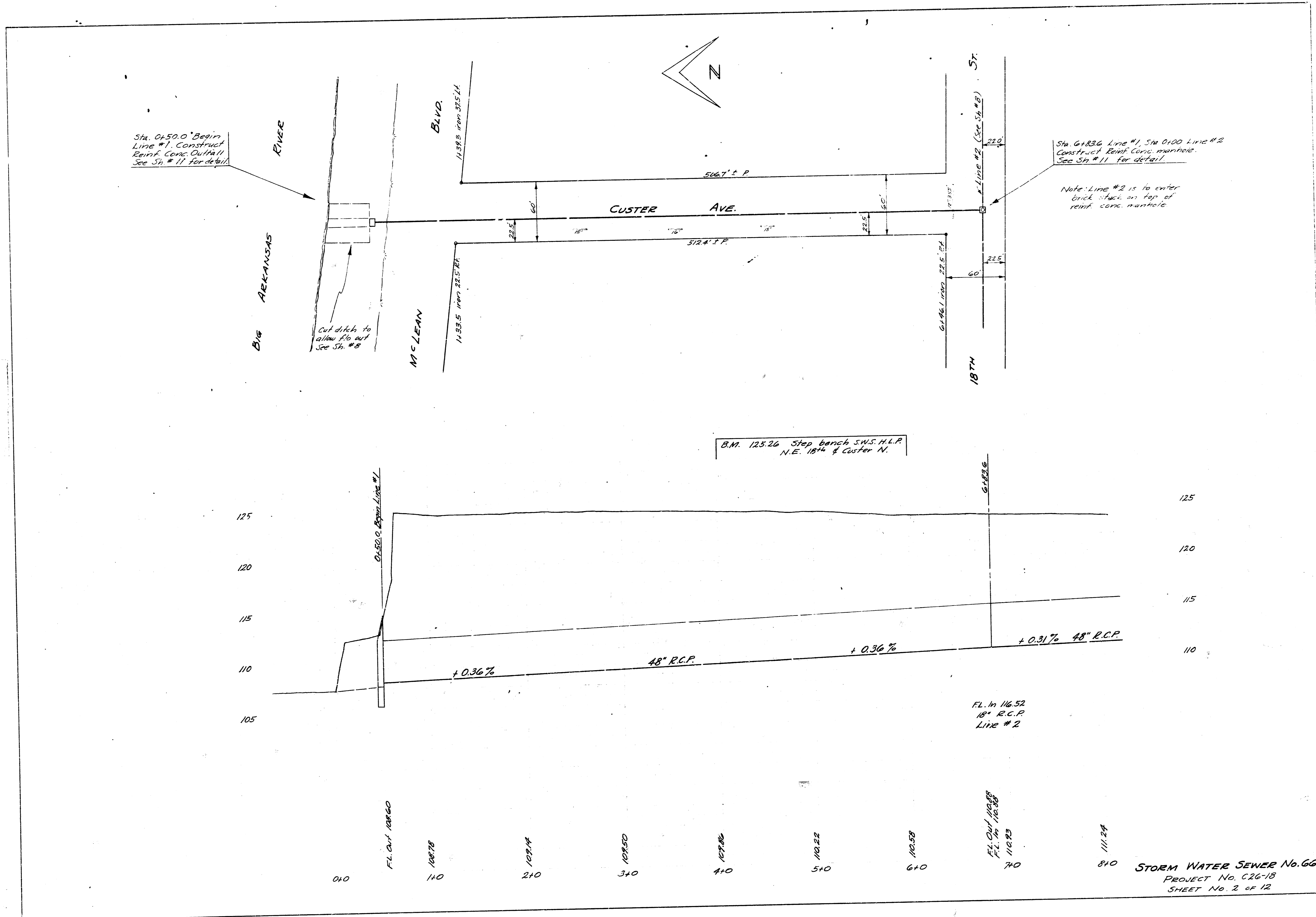


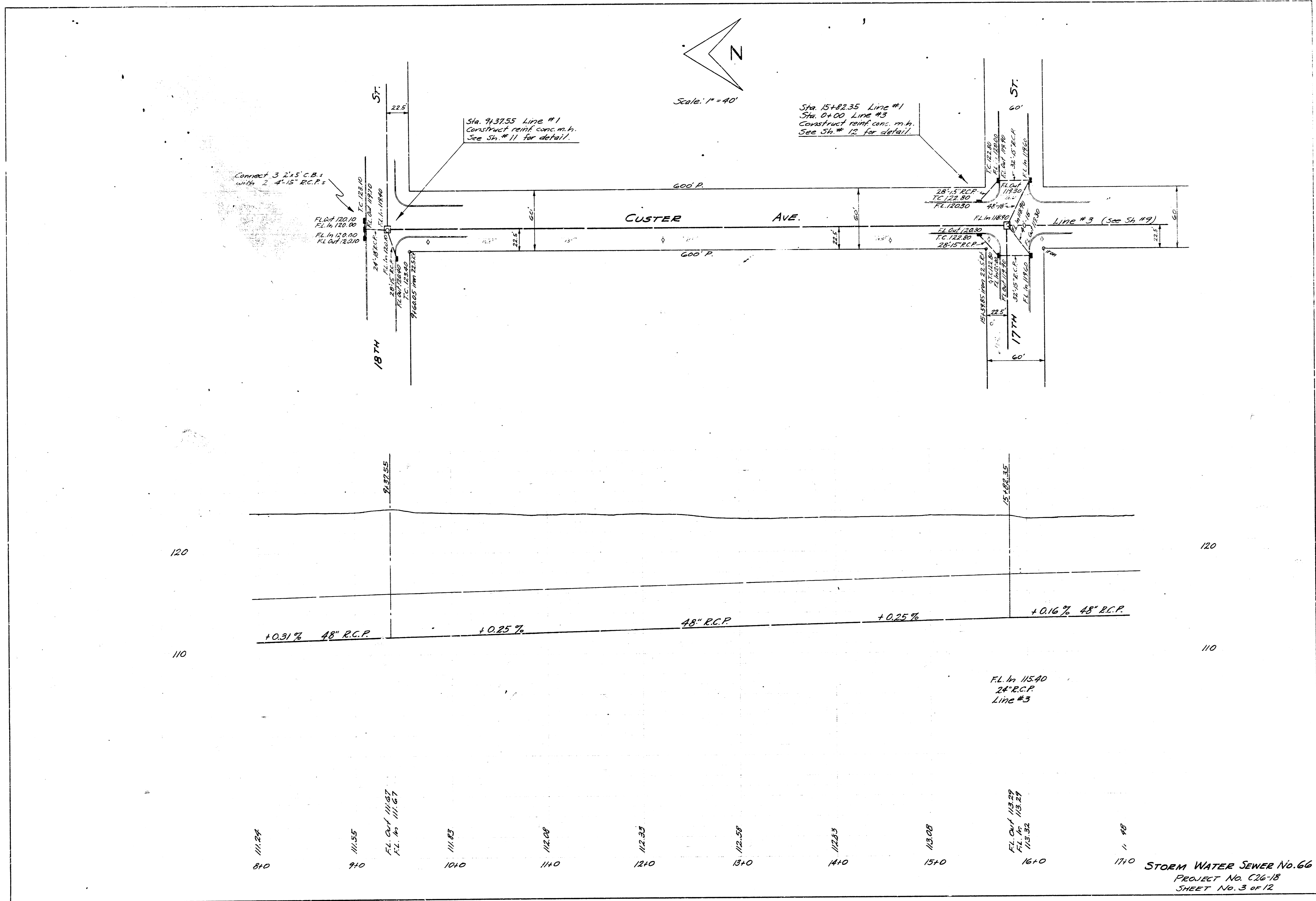
BENEFIT DISTRICT
 STORM WATER SEWER NO.66
 CITY OF WICHITA, KANS.
 B. E. SMITH CITY ENGINEER
 PROJECT NO. C 26-18

LOCATION MAP
STORM WATER SEWER NO. 66
CITY OF WICHITA, KANSAS
B.E. SMITH - CITY ENGINEER
PROJECT NO. C26-18
OCTOBER, 1956



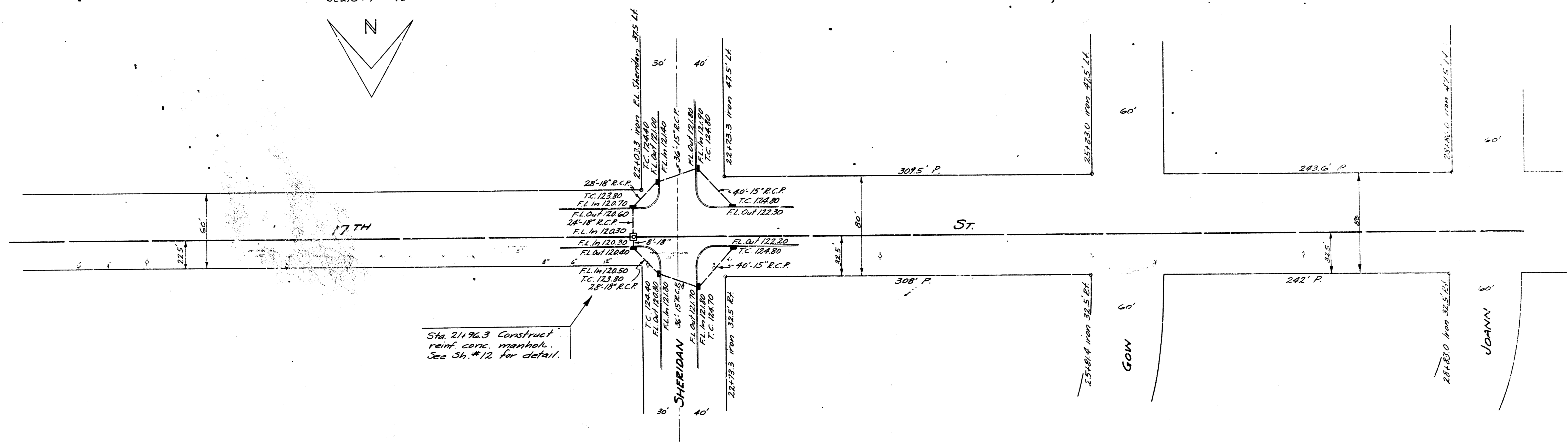
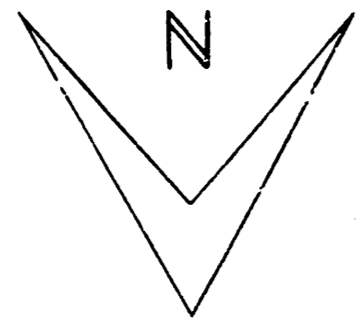
Hansen
Linn
11/13



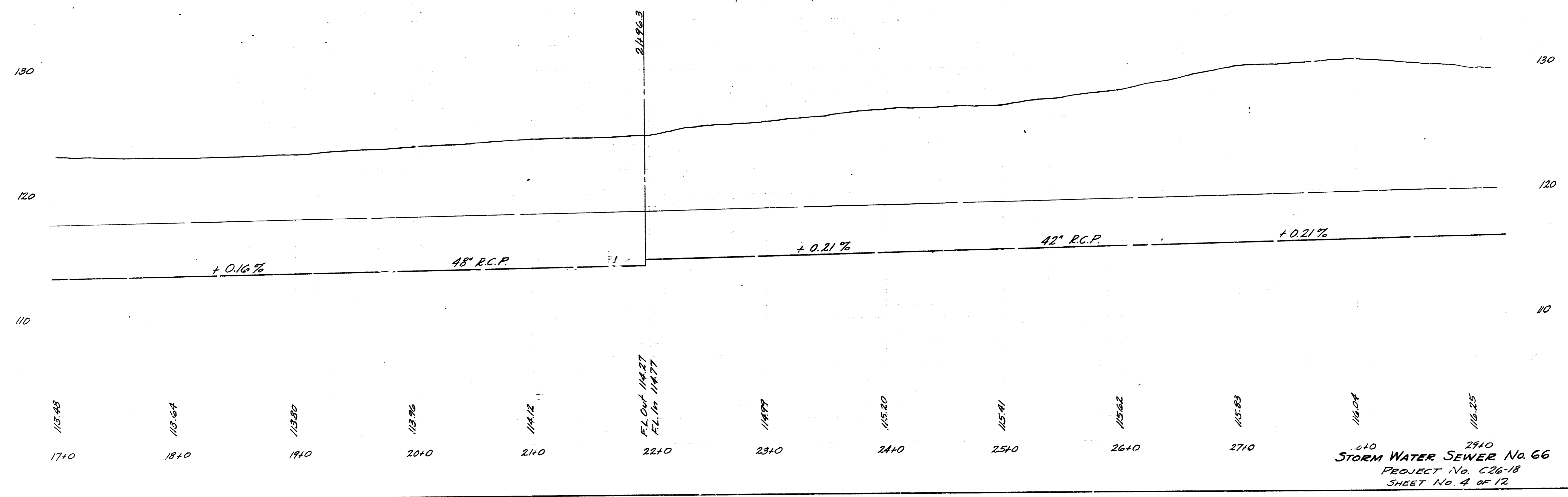


STORM WATER SEWER No. 66
 PROJECT No. C26-18
 SHEET No. 3 of 12

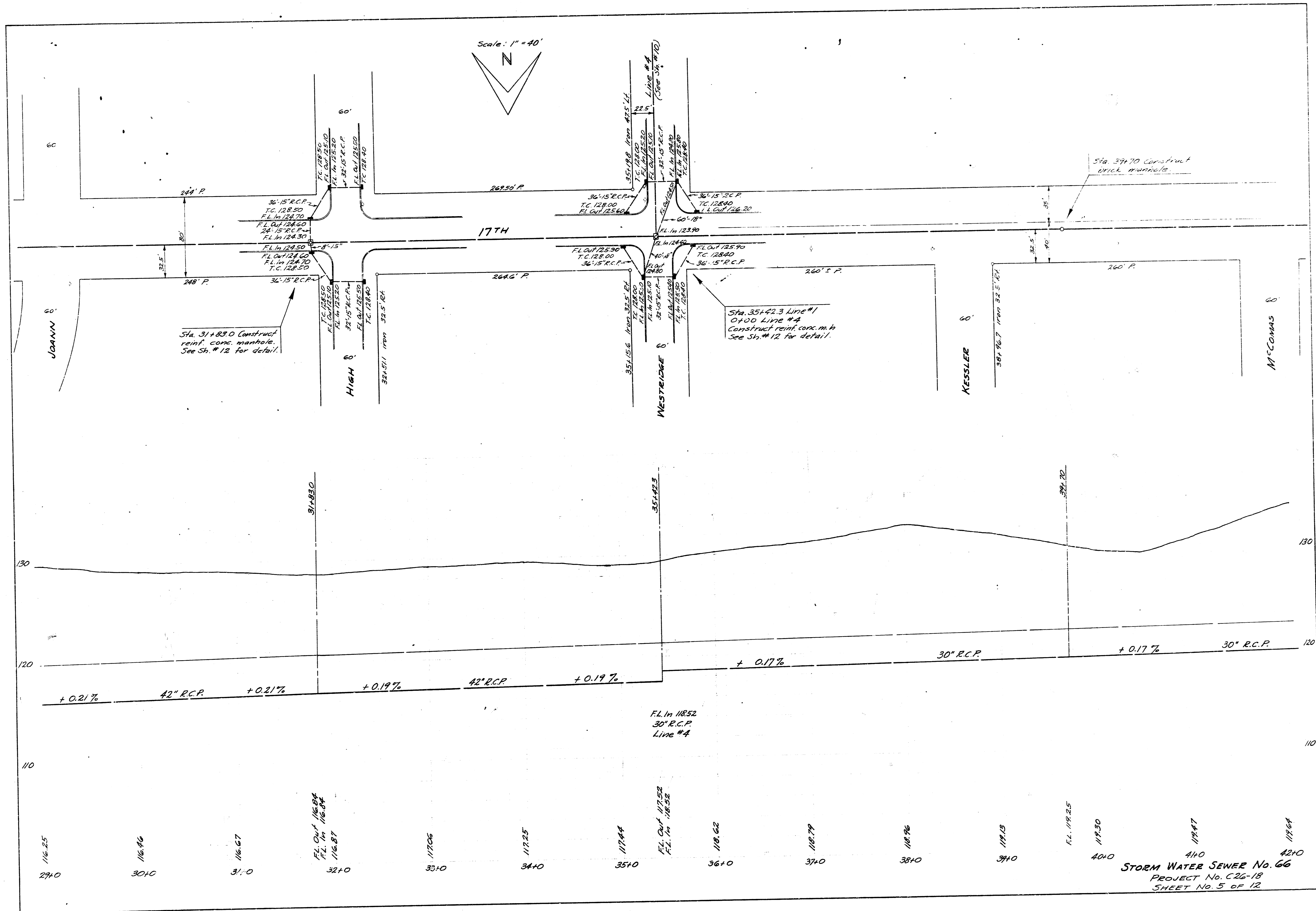
Scale: 1" = 40'



B.M. 12515 Standard S.E. Cor. 17th & Sheridan



STORM WATER SEWER No. 66
PROJECT No. C26-18
SHEET No. 4 of 12

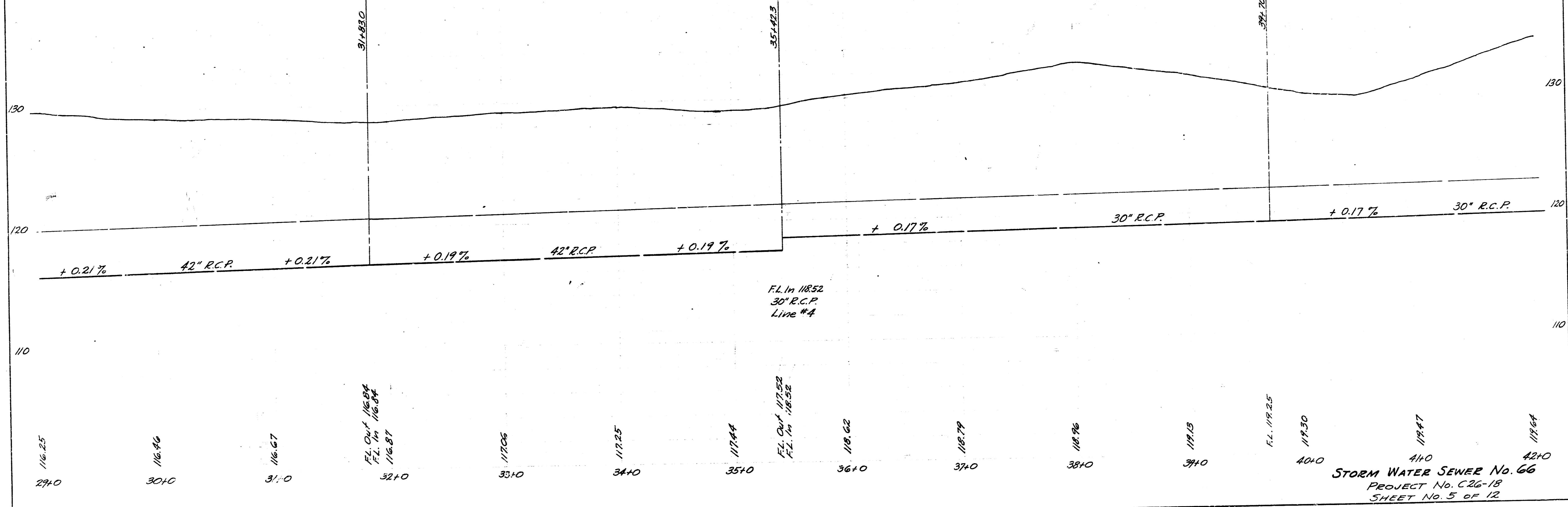


Scale: 1" = 40'
 N

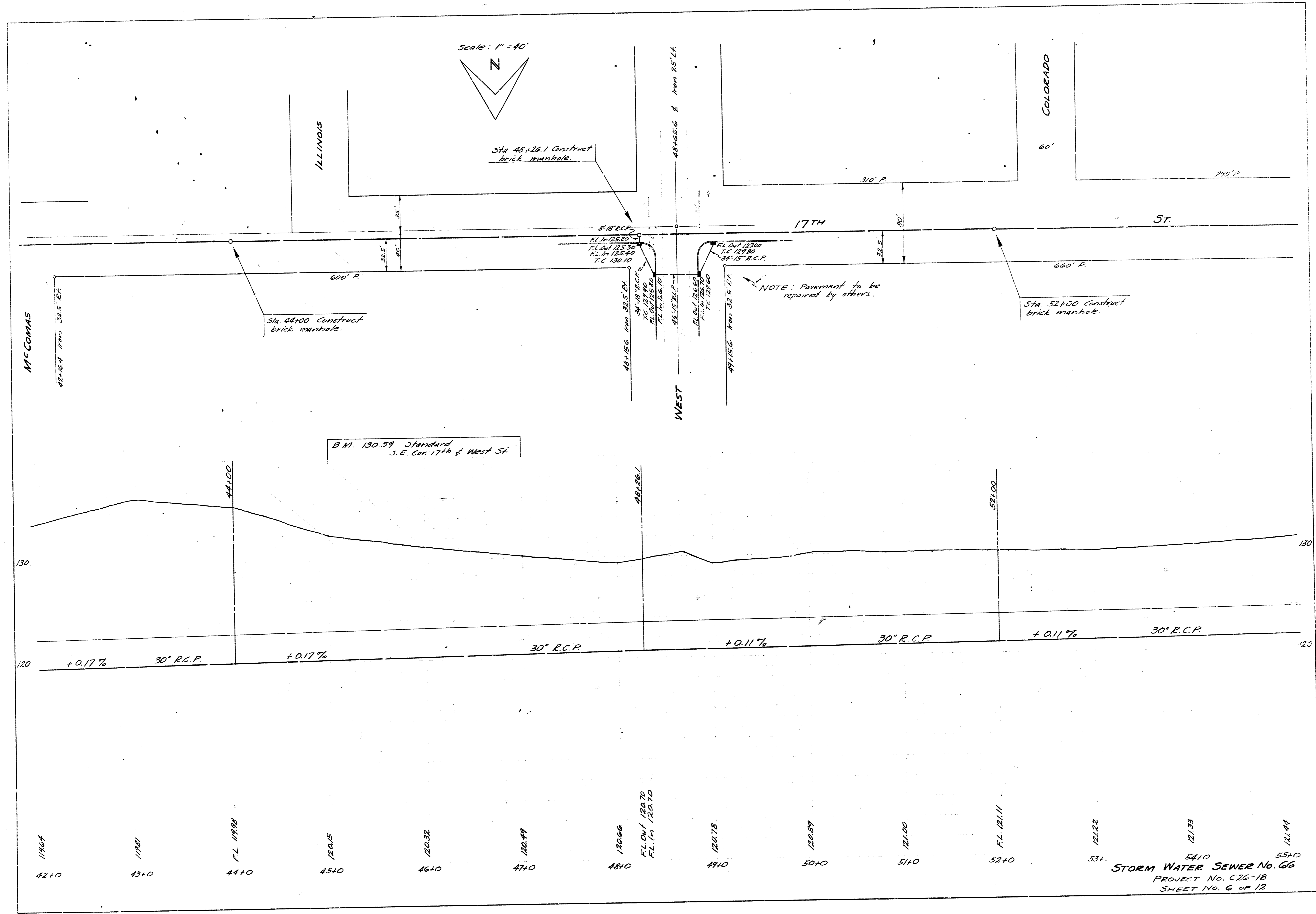
Sta. 31+83.0 Construct
 reinf. conc. manhole.
 See Sh. # 12 for detail.

Sta. 35+42.3 Line #1
 O+D Line #4
 Construct reinf. conc. m.h.
 See Sh. # 12 for detail.

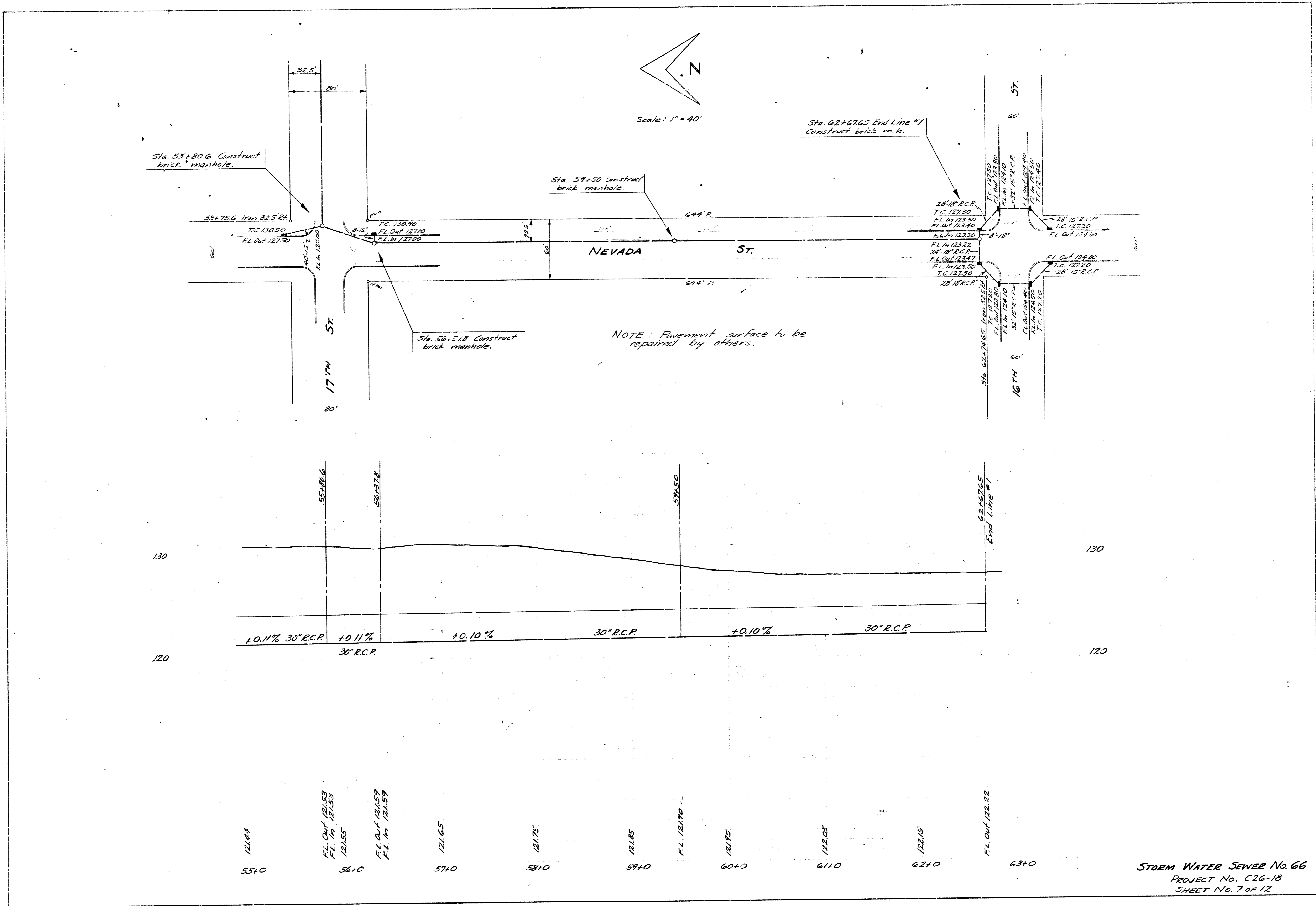
Sta. 37+70 Construct
 brick manhole.

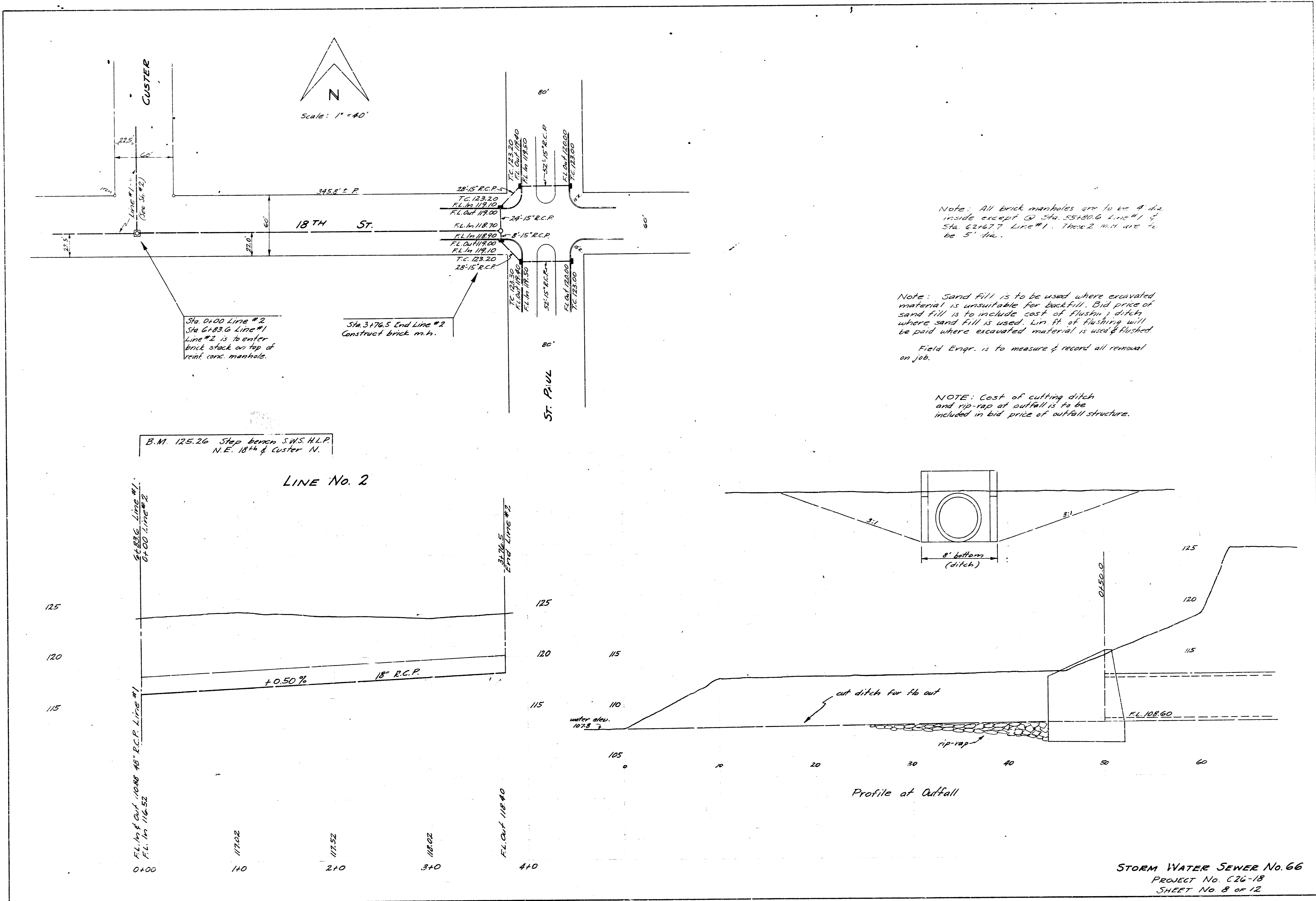


STORM WATER SEWER No. 66
 PROJECT No. C26-18
 SHEET No. 5 of 12



Station	Flow	Flow	Flow	Flow	Flow	Flow	Flow	Flow	Flow	Flow	Flow	Flow	Flow	Flow
42+0	11864	11901	FL 11928	12045	12032	12049	12066	12078	12089	12100	FL 12111	12122	12133	12144
							FLOW 12070							
							FL 12070							





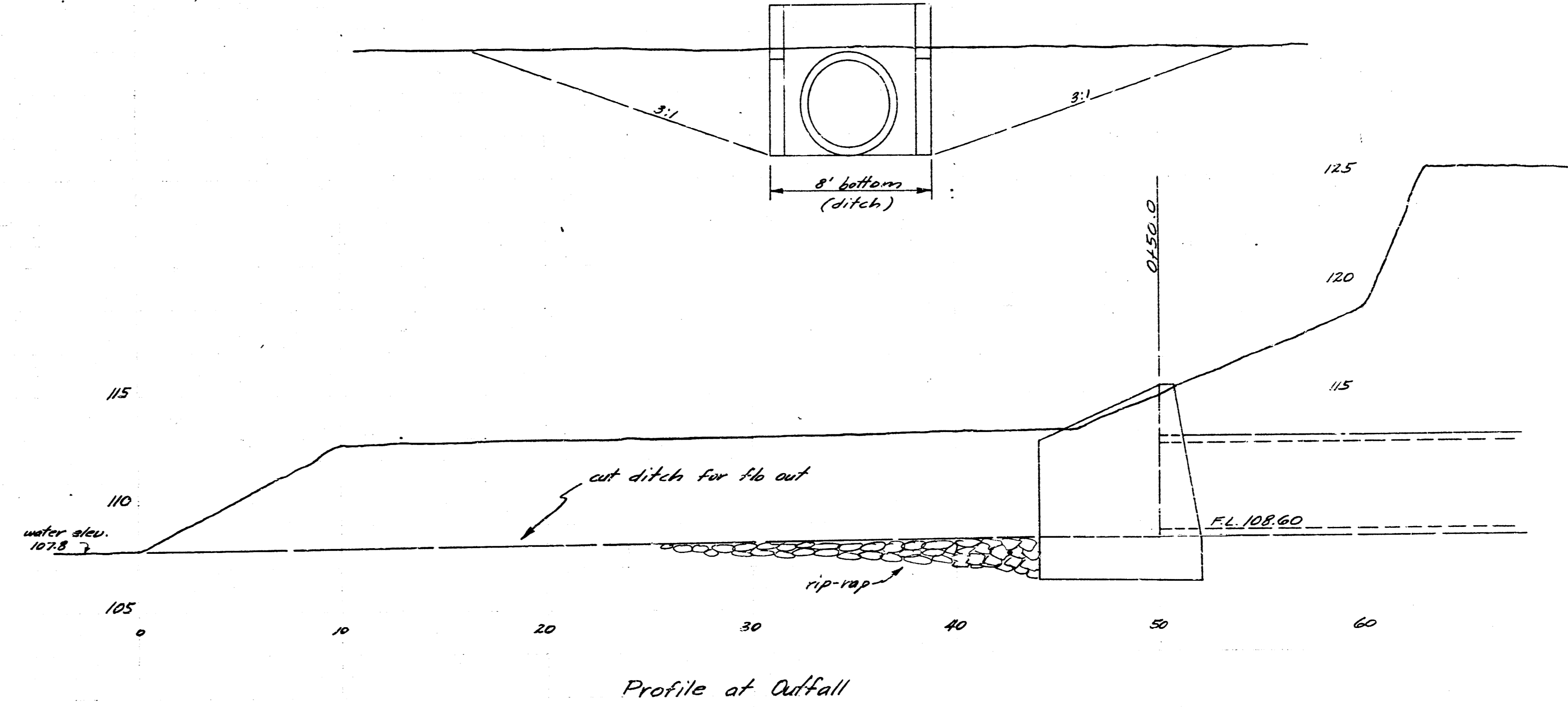
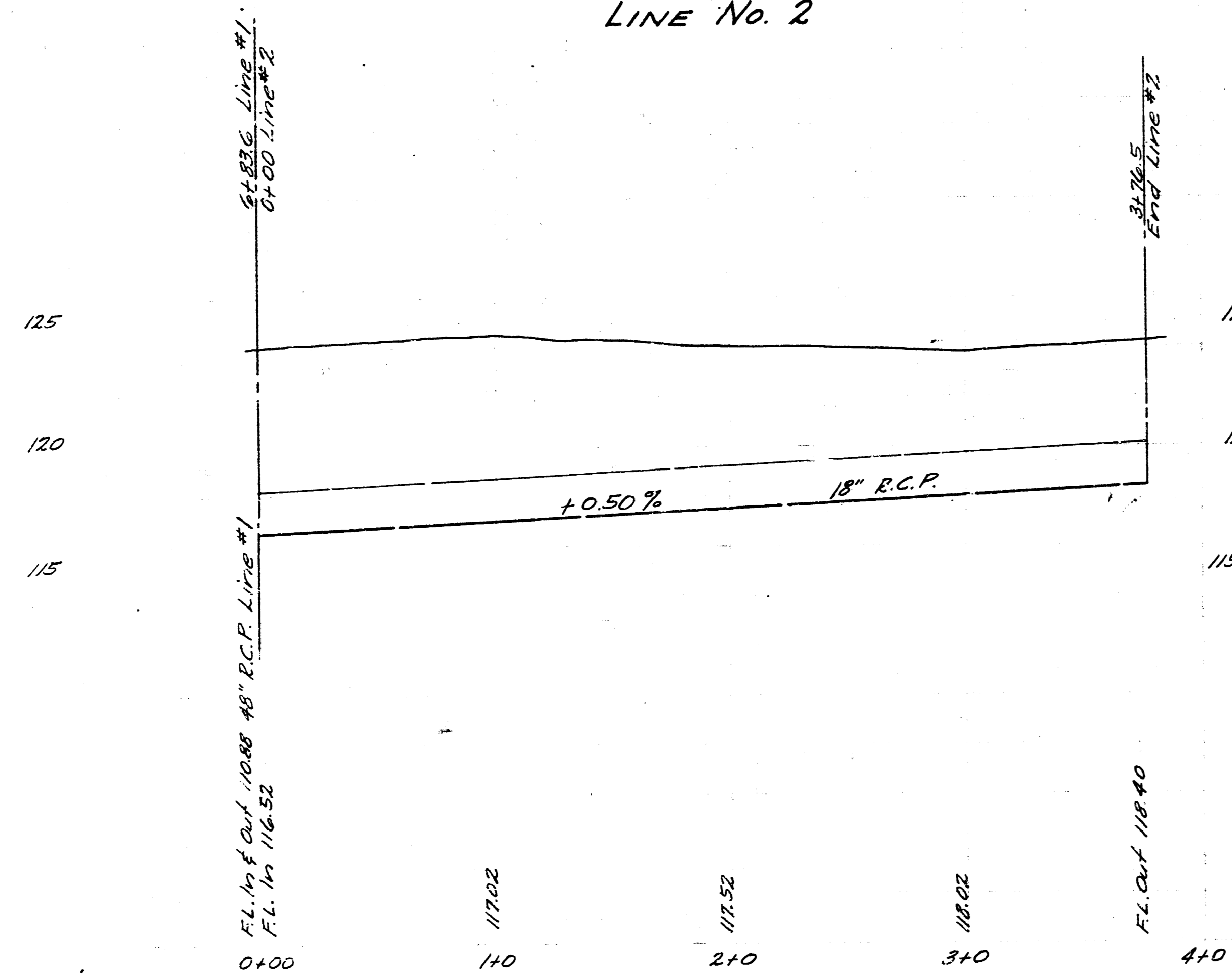
Note: All brick manholes are to be 4 dia. inside except @ Sta. 55+80.6 Line #1 of Sta. 62+67.7 Line #1. These 2 m.h. are to be 5' dia.

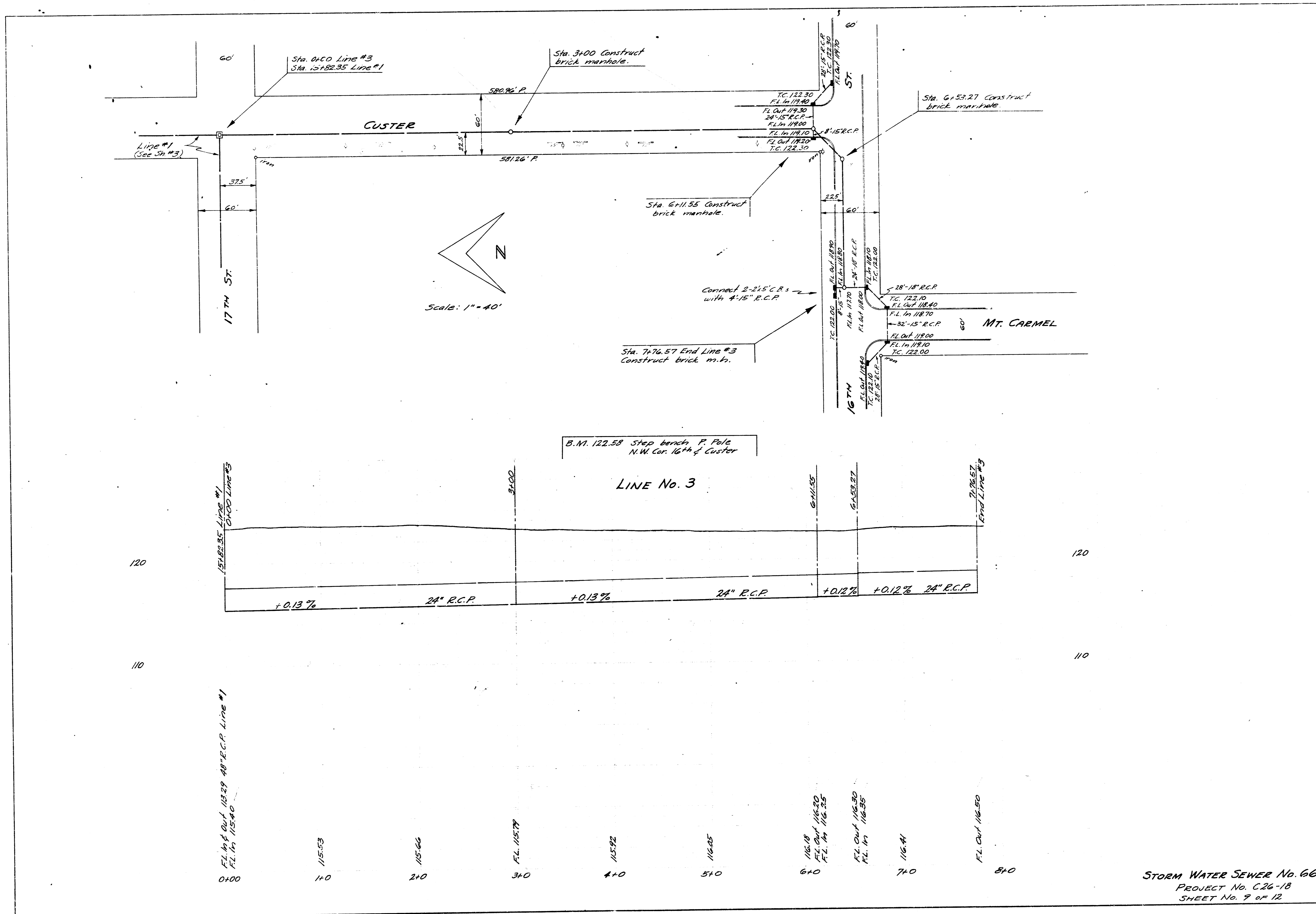
Note: Sand fill is to be used where excavated material is unsuitable for backfill. Bid price of sand fill is to include cost of flushing ditch where sand fill is used. Lin ft. of flushing will be paid where excavated material is used & flushed.
Field Engr. is to measure & record all removal on job.

NOTE: Cost of cutting ditch and rip-rap at outfall is to be included in bid price of outfall structure.

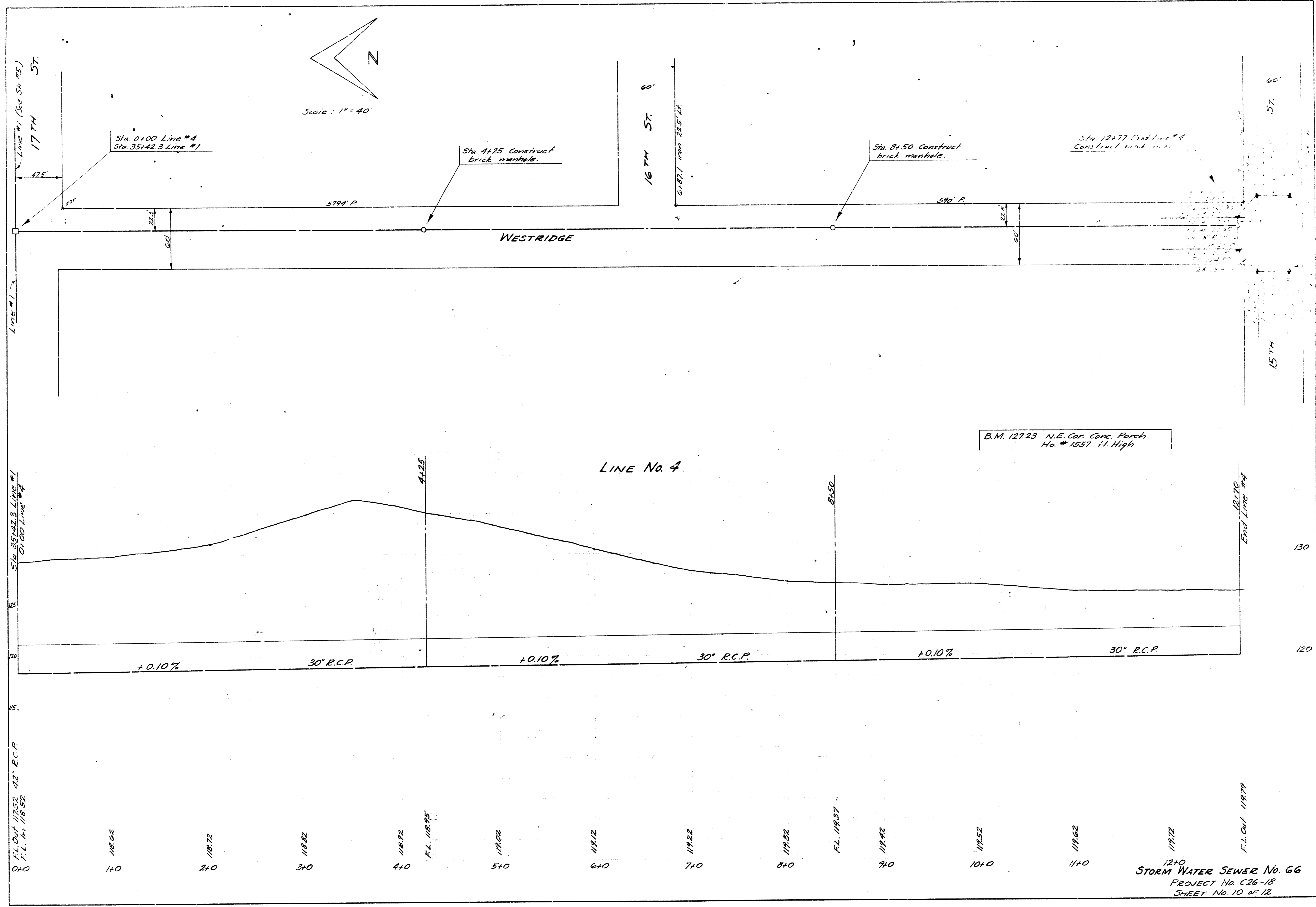
B.M. 125.26 Step bench SWS H.L.P. N.E. 18th & Cluster N.

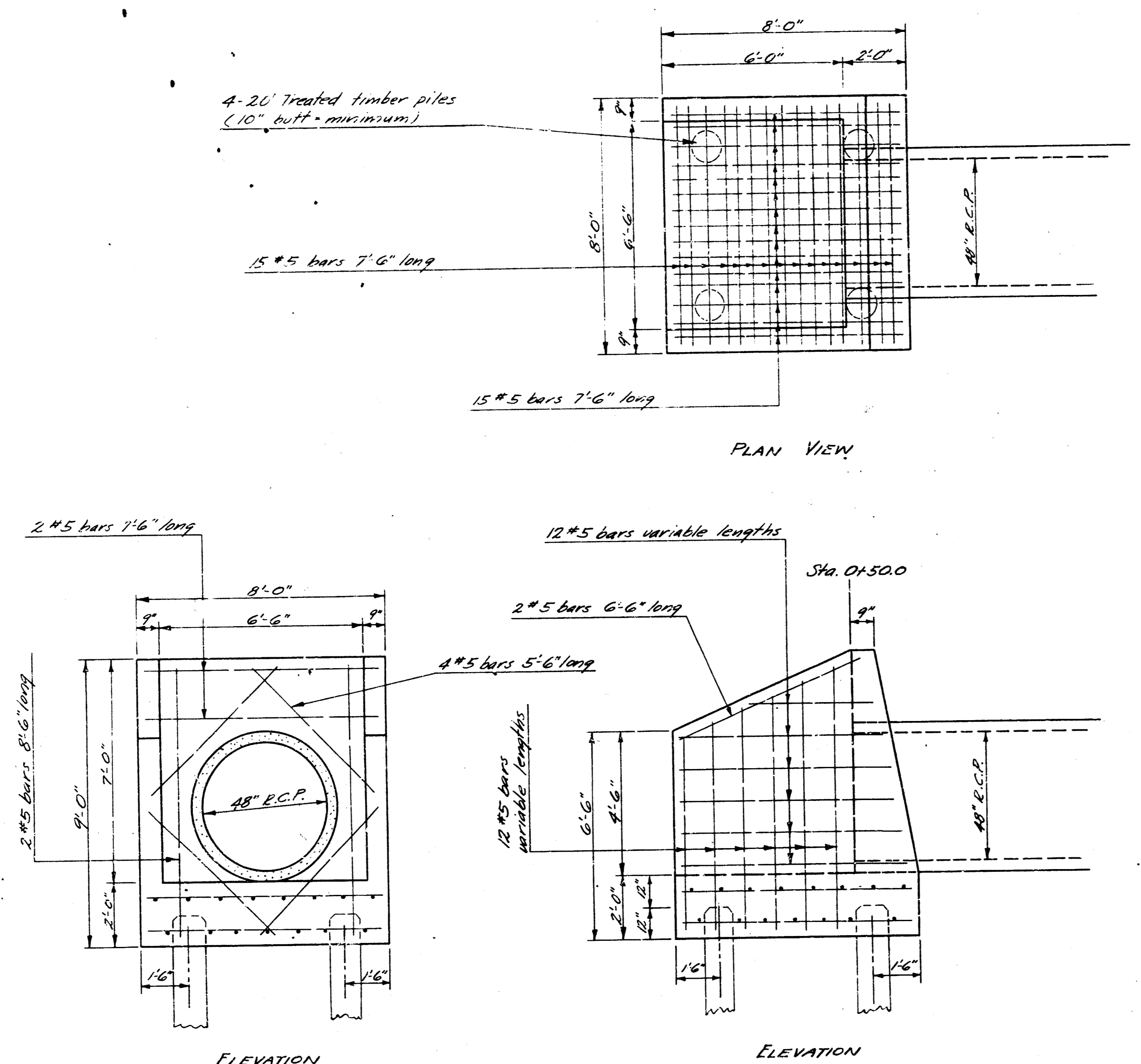
LINE No. 2





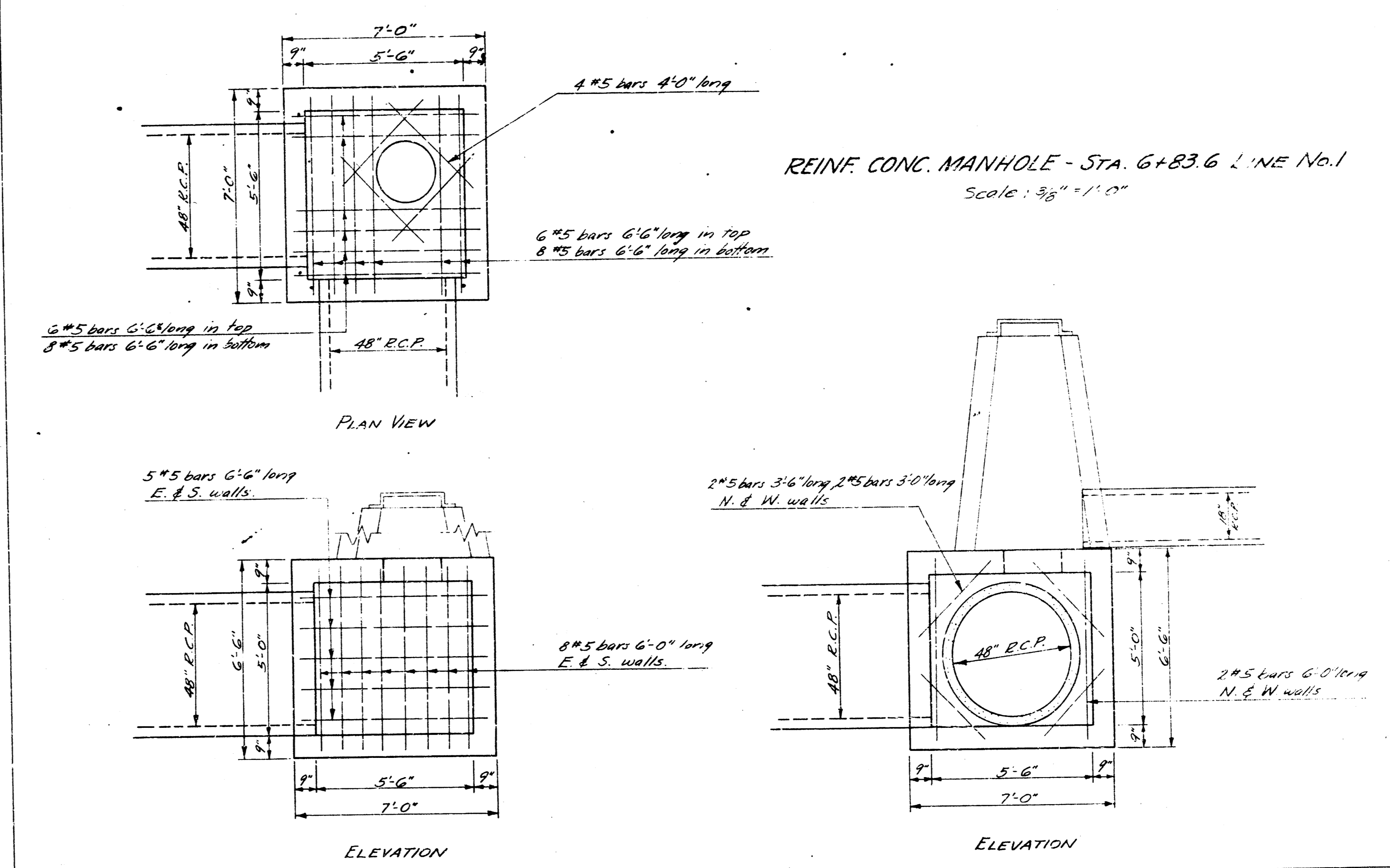
STORM WATER SEWER No. 66
 PROJECT No. C26-18
 SHEET No. 9 of 12



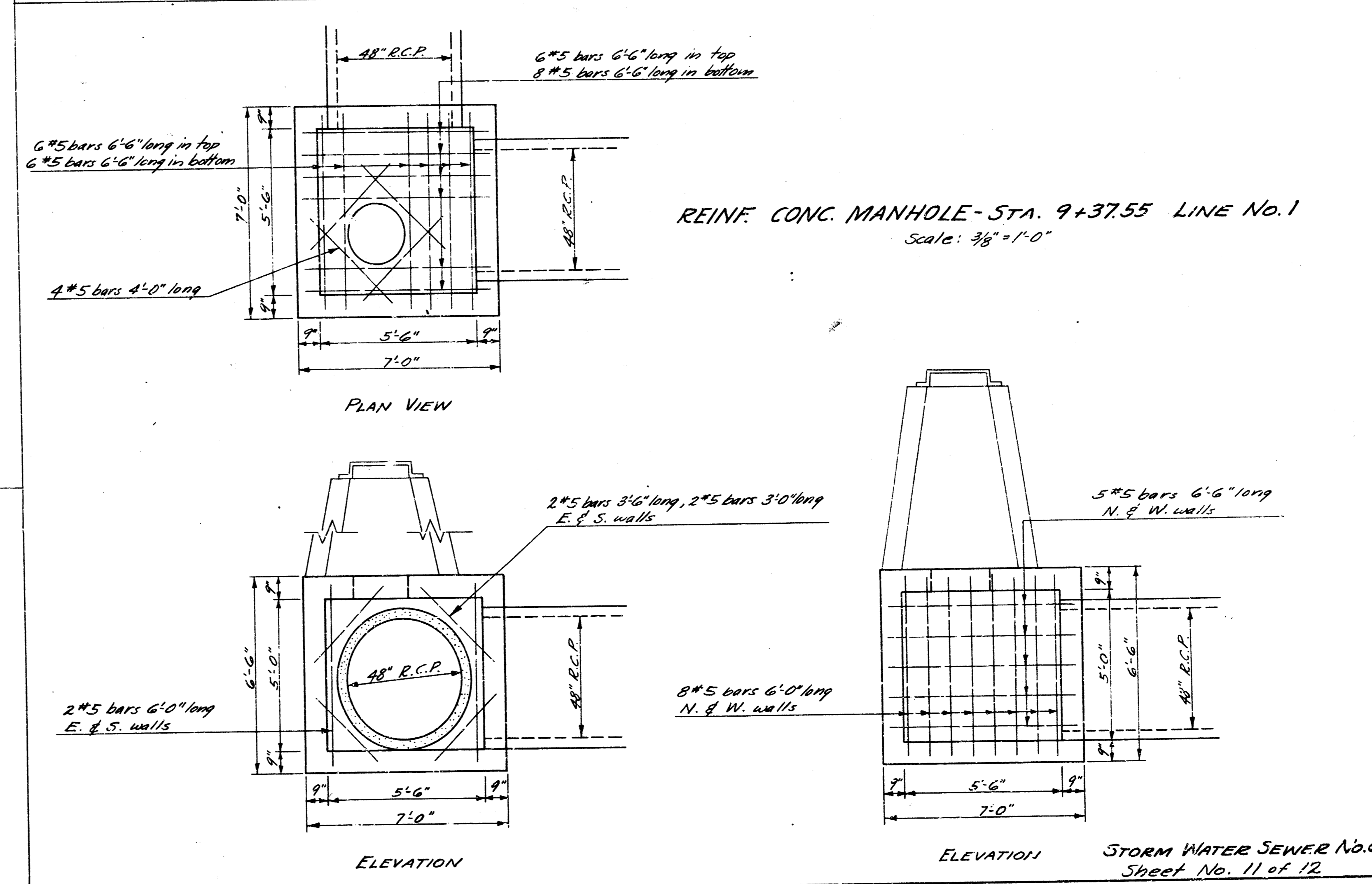


REINF. CONC. OUTFALL STRUCTURE
 STA. 0+50 LINE No. 1
 Scale: 3/8" = 1'-0"

Concrete for structures shall contain not less than 105 bbls. of cement per cu. yd. of concrete. In no event shall the total water content exceed 6.25 gals. per sack of cement. The mixture of fine and coarse aggregate shall be such to produce a maximum density of a most workable mixture. An internal vibrator shall be used for placing concrete. The floor of manholes are to be shaped for flow and drainage.
 Catch basin leads are to enter the brick stacks on top of the reinf. conc. manholes at the elevations shown on the plan.
 The cost of the brick stack is to be included in the bid price of reinf. conc. manhole.



REINF. CONC. MANHOLE - STA. 6+83.6 LINE No. 1
 Scale: 3/8" = 1'-0"



REINF. CONC. MANHOLE - STA. 9+37.55 LINE No. 1
 Scale: 3/8" = 1'-0"

