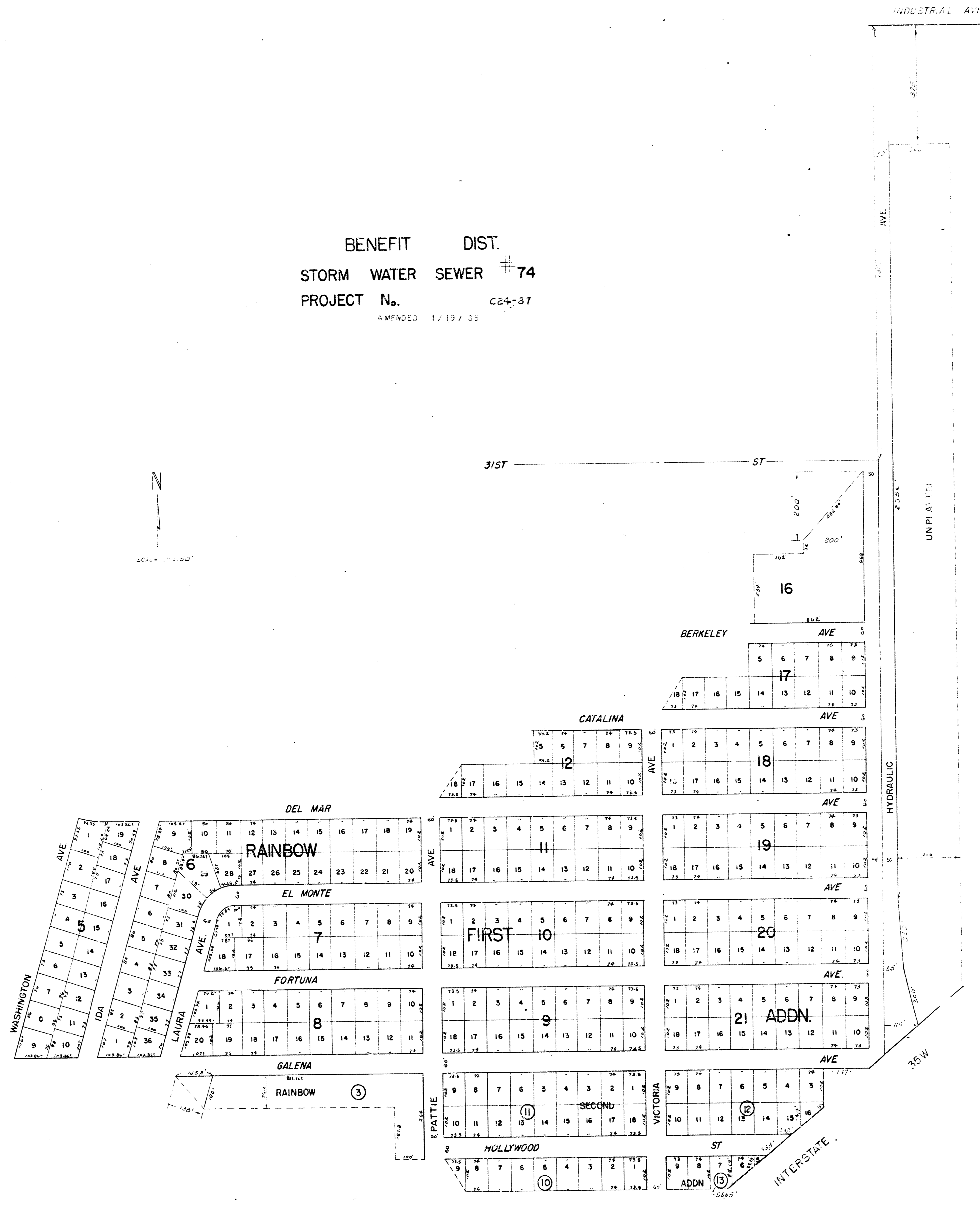
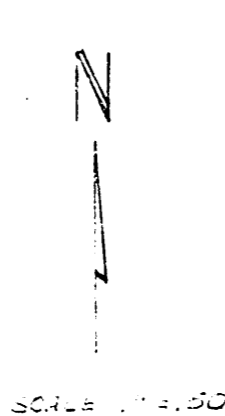
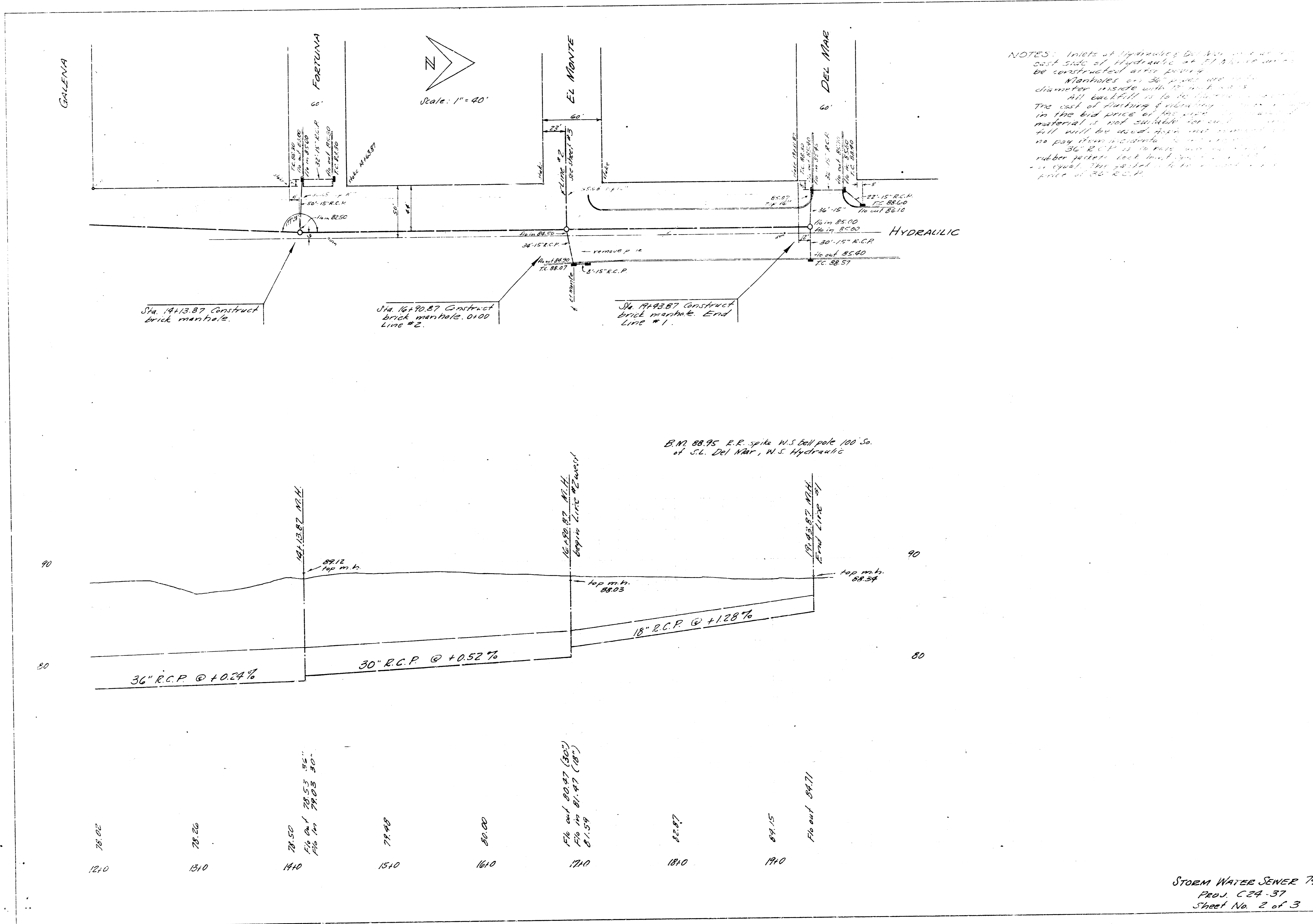
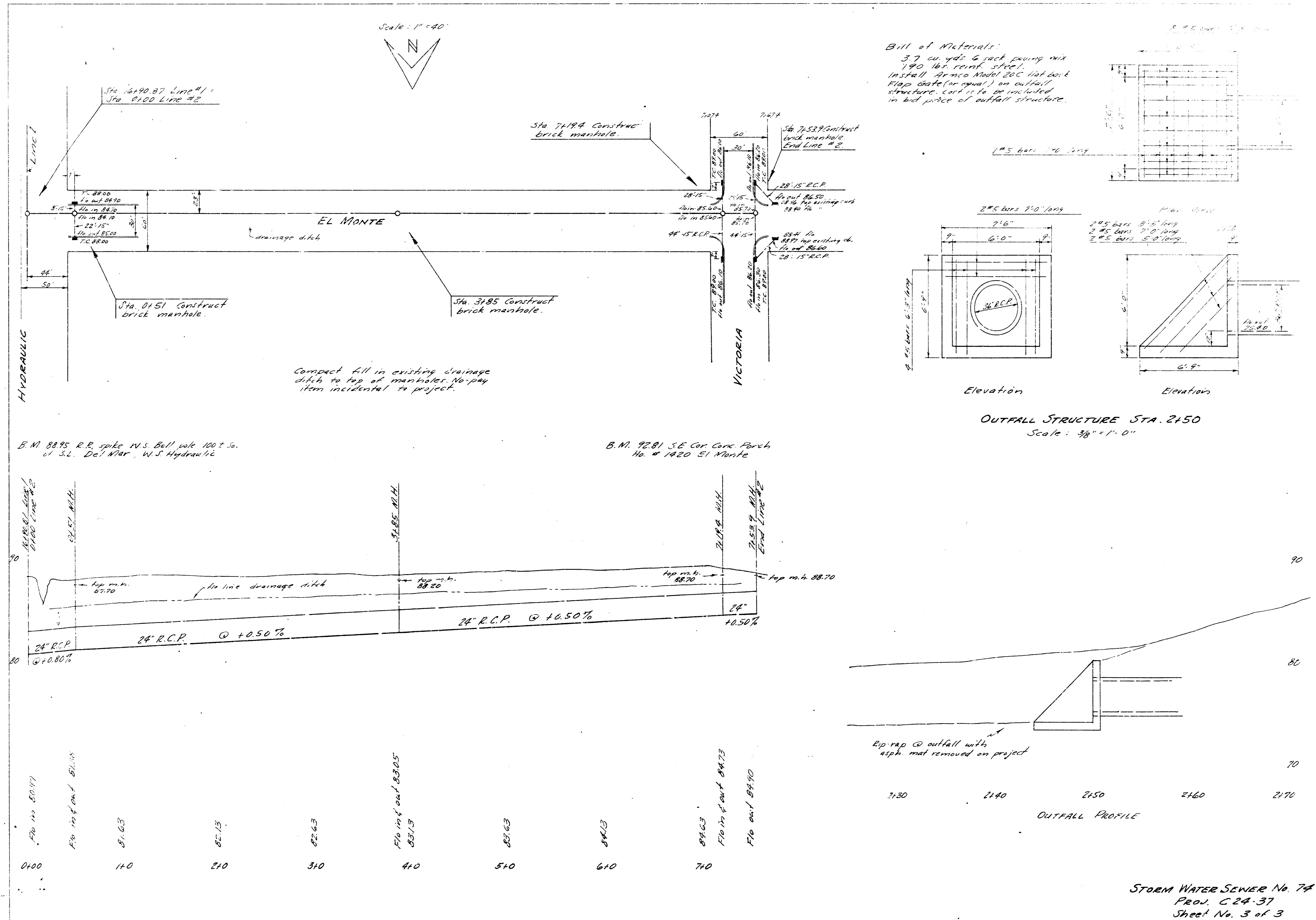


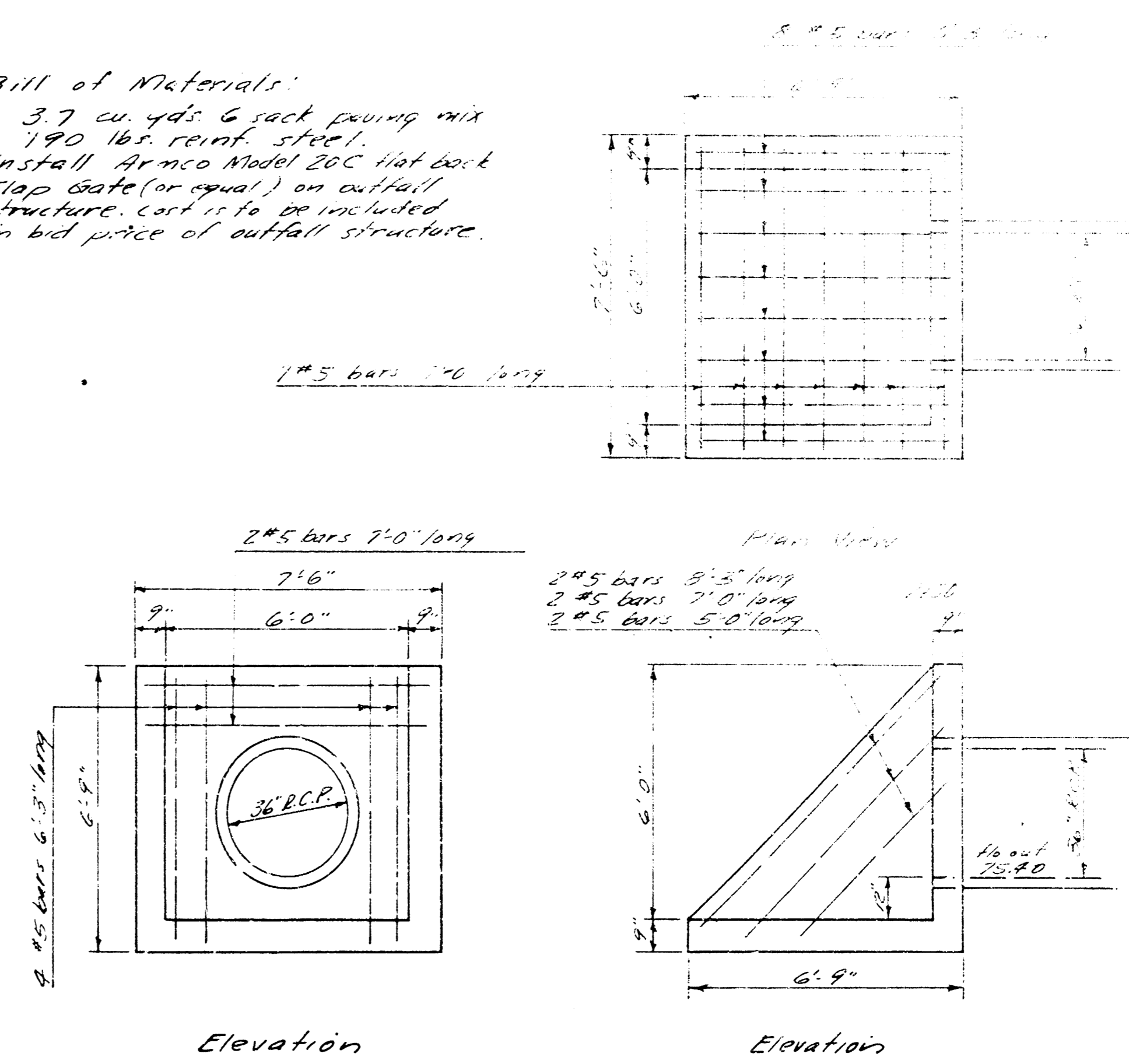
BENEFIT DIST.
STORM WATER SEWER # 74
PROJECT No. C24-37
REVISED 1/19/53







Bill of Materials:
 3.7 cu. yds. 6 sack grout mix
 190 lbs. reinf. steel.
 Install Armo Model 20C flat back
 Flap gate (or equal) on outfall
 structure. Cost is to be included
 in bid price of outfall structure.



OUTFALL STRUCTURE STA. 2150
 Scale: 3/8" = 1'-0"

B.M. 8875 R.E. spike N.S. Bull. pole 100' So.
 of S.L. De' Nar, W.S. Hydraulic

B.M. 9281 S.E. Cor. Core Porch
 No. # 1420 El Monte