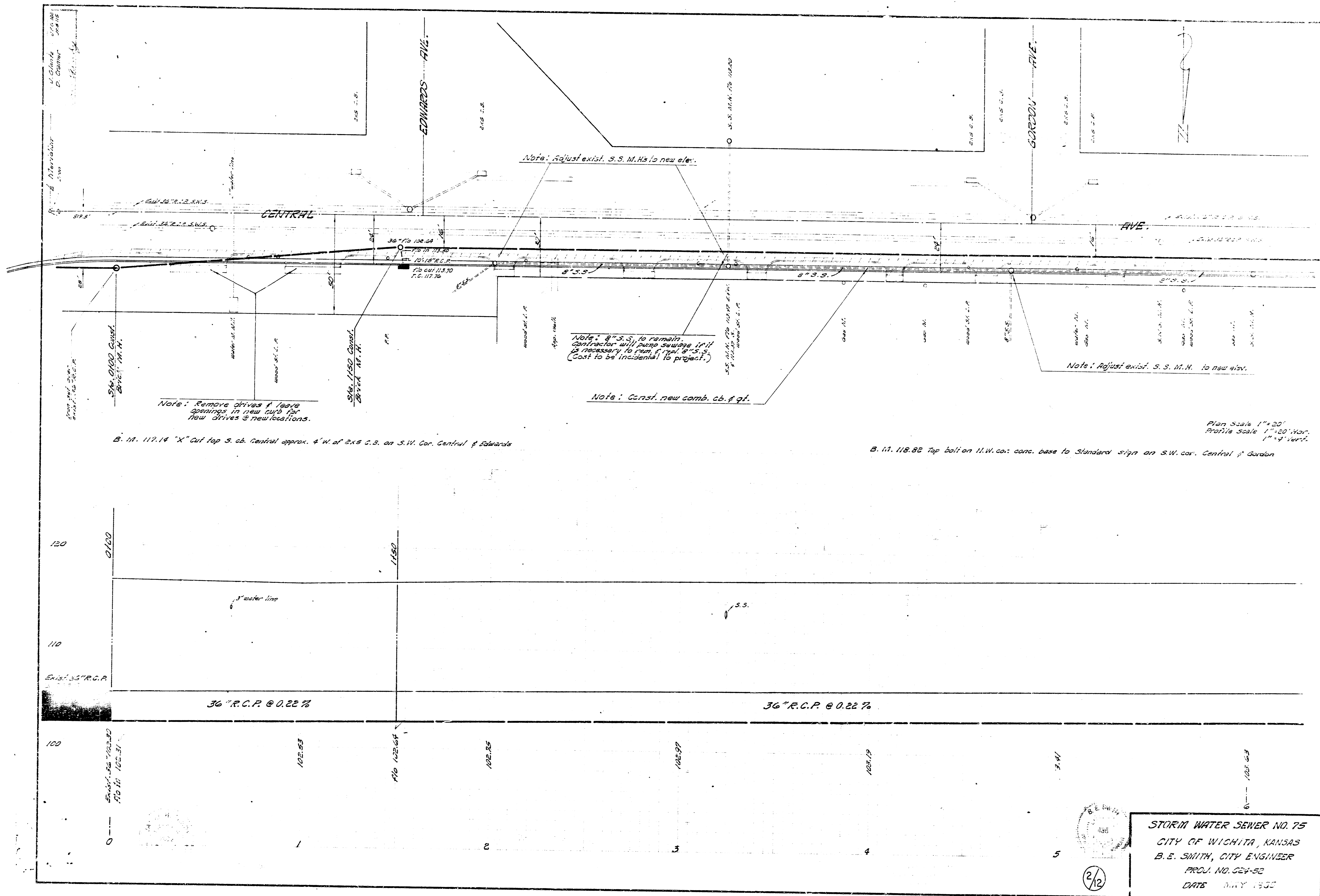


STORM WATER SEWER NO. 75

CITY OF WICHITA KANSAS  
 B.E. SMITH, CITY ENGINEER  
 PROJECT NO. C24-52



U. Clark  
D. Warner

Central Ave

EDWARDS AVE

GORDON AVE

Ave

Note: Adjust exist. S.S. M.H.s to new elev.

Note: 8" S.S. to remain. Contractor will pump swage if necessary to clean if req'd S.S. (Cost to be incidental to project.)

Note: Const. new comb. cb. & qt.

Note: Adjust exist. S.S. M.H. to new elev.

Note: Remove drives & leave openings in new curb for new drives @ new locations.

B.M. 117.14 "X" cut top S. cb. Central approx. 4' W. of 2x8 C.B. on S.W. cor. Central & Edwards

B.M. 118.82 Top ball on N.W. cor. conc. base to Standard sign on S.W. cor. Central & Gordon

Plan Scale 1"=20'  
Profile Scale 1"=4' Vert.

120

110

100

36" R.C.P. @ 0.22%

36" R.C.P. @ 0.22%

5x5' x 5' M.H. to 102.31

102.53

M.H. 102.64

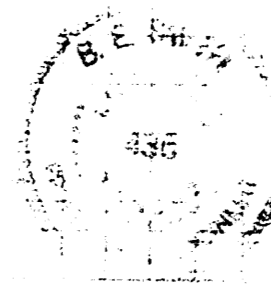
102.85

102.97

103.19

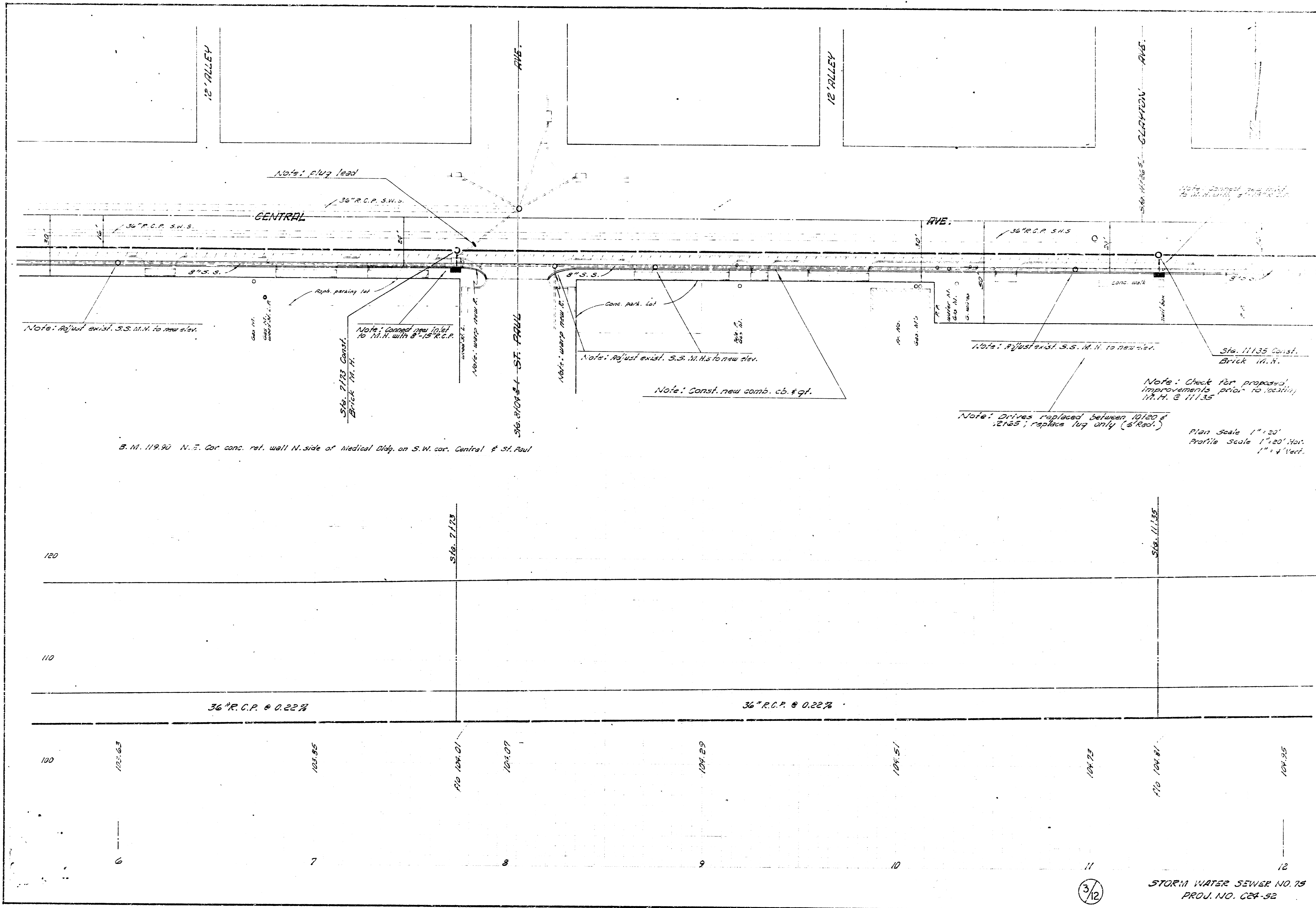
7.41

103.59



STORM WATER SEWER NO. 75  
CITY OF WICHITA, KANSAS  
B.S. SMITH, CITY ENGINEER  
PROJ. NO. 524-52  
DATE JULY 1952

2/12



Note: Adjust exist. S.S. M.H. to new elev.

Note: Const. new inlet to M.H. with 8" R.C.P.  
 Sta. 7173 Const. Brick M.H.

Note: Adjust exist. S.S. M.H.s to new elev.

Note: Const. new comb. cb. & qt.

Note: Adjust exist. S.S. M.H. to new elev.

Sta. 11135 Const. Brick M.H.

Note: Check for proposed improvements prior to location M.H. @ 11135

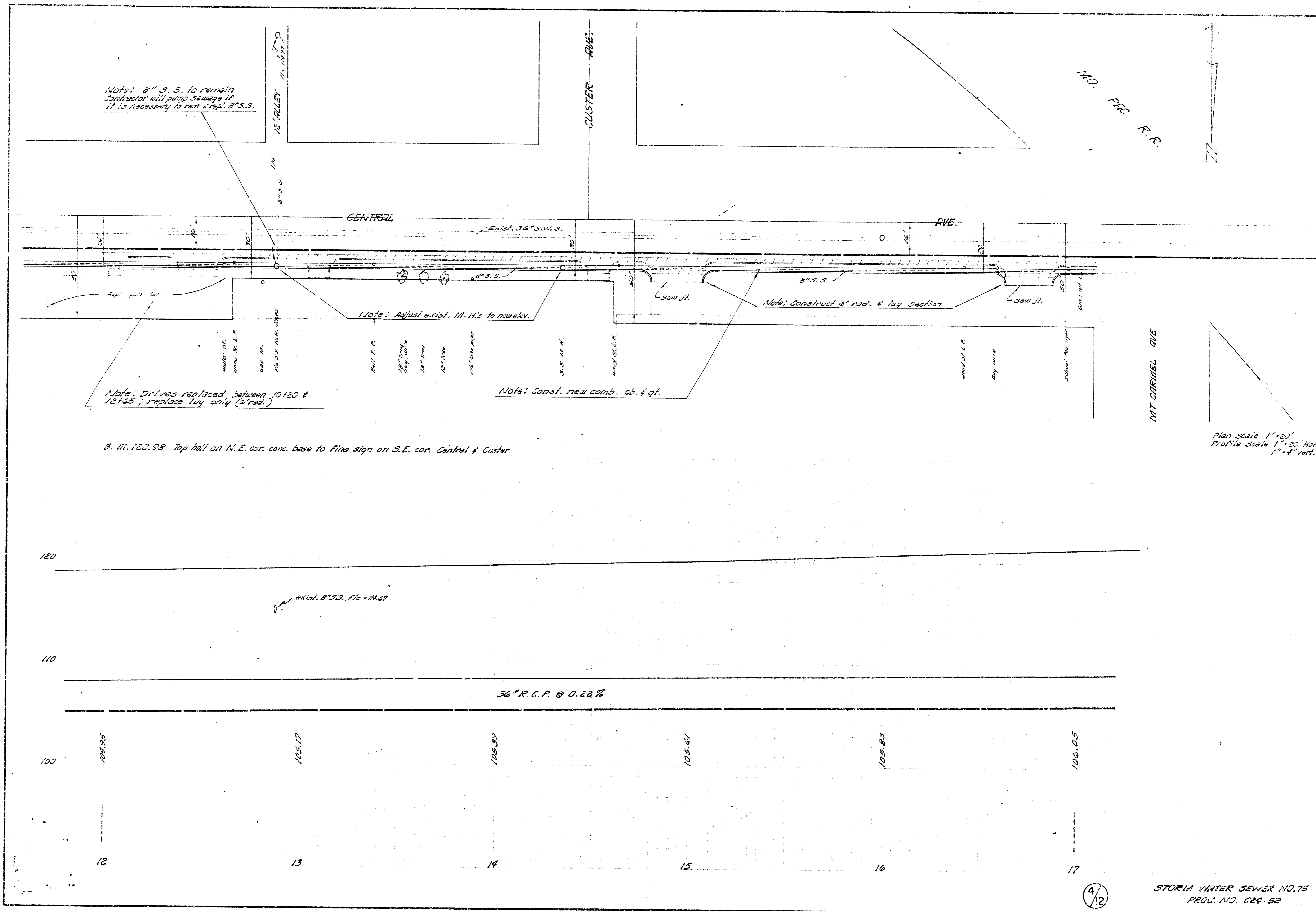
Note: Drives replaced between 10100 & 10125; replace lug only (S. Road)

Plan Scale 1" = 20'  
 Profile Scale 1" = 20' Vert.  
 1" = 4' Vert.

S.M. 119.90 N.E. Cor. conc. ret. wall N. side of Medical Bldg. on S.W. cor. Central & St. Paul

3/12

STORM WATER SEWER NO. 75  
 PROJ. NO. C24-52



Note: 8" S.S. to remain  
 Sanitary will pump sewage if  
 it is necessary to run 8" S.S.

Note: Drives replaced between 10120 &  
 12165; replace luy only (6' rad.)

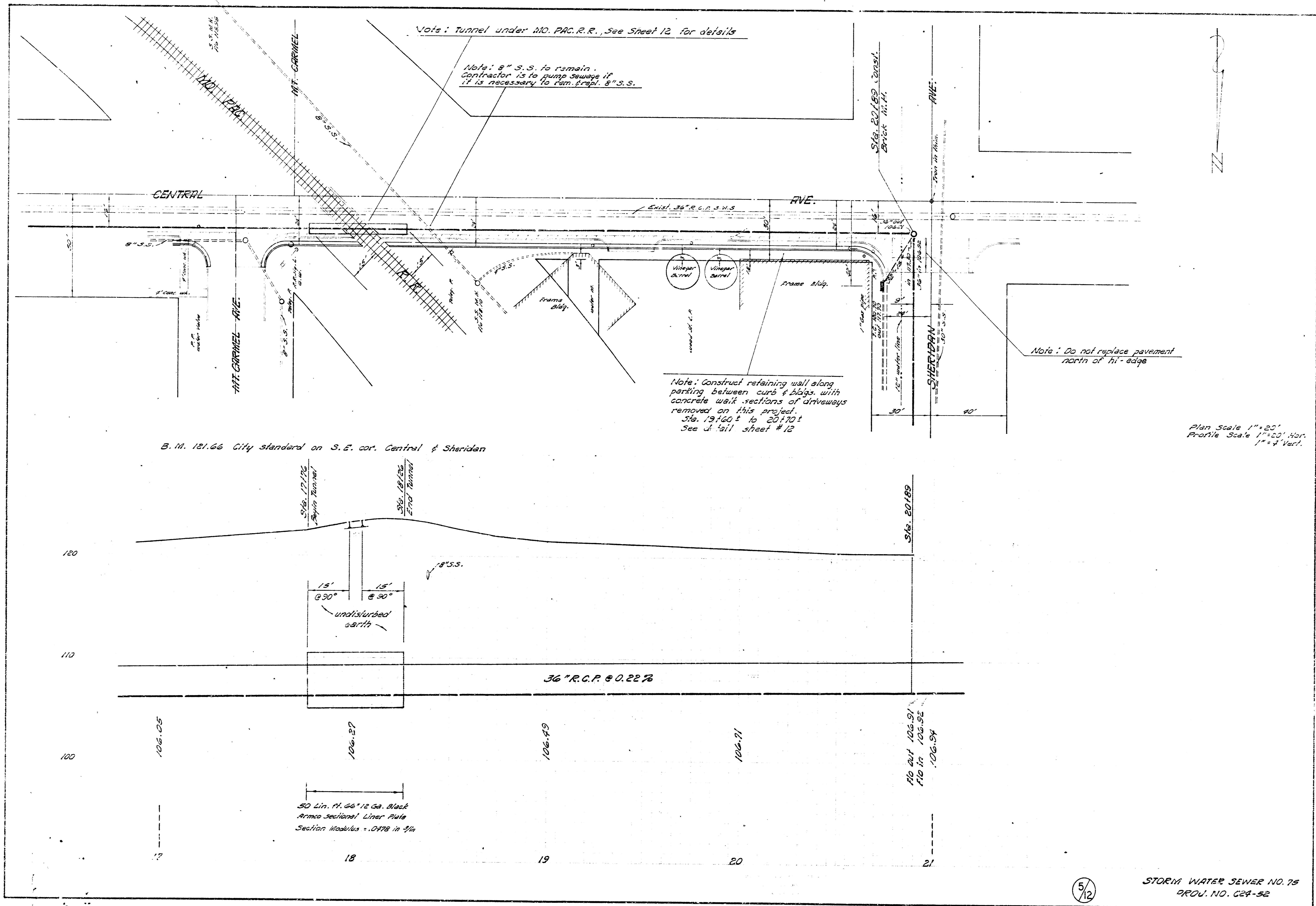
Note: Adjust exist. M.H.s to new elev.

Note: Const. new comb. cb. & qt.

Note: Construct 6' rad. & lug section

8. 11. 120.98 Top ball on N.E. cor. cone. base to First sign on S.E. cor. Central & Custer

Plan Scale 1"=20'  
 Profile Scale 1"=4' Vert.



Note: Tunnel under Mt. Carmel R.R., See Sheet 12 for details

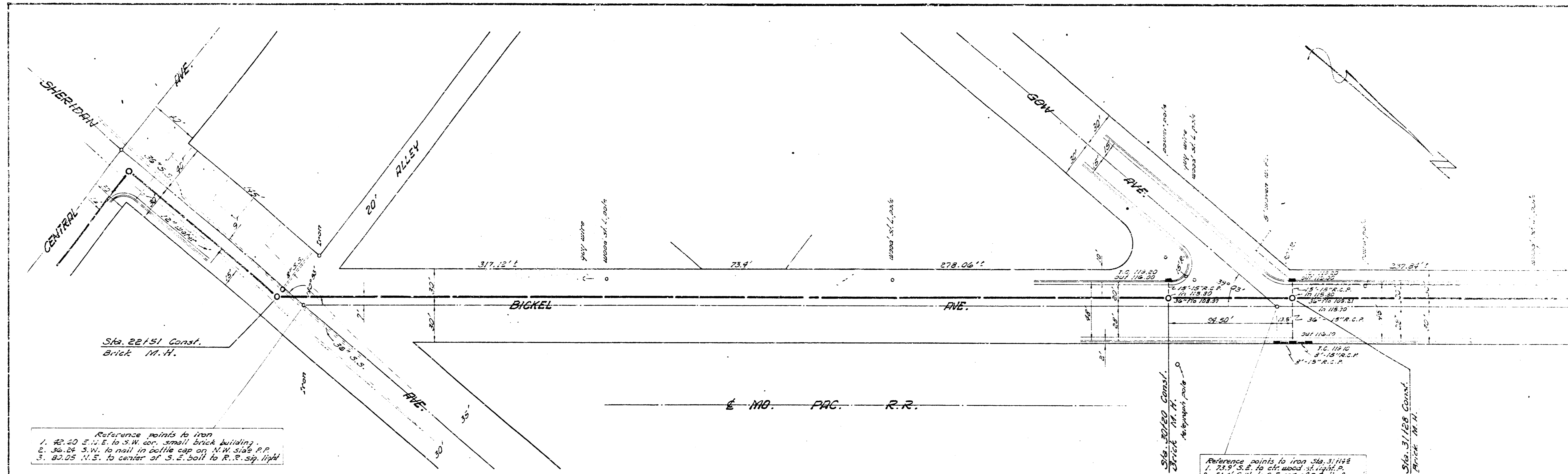
Note: 8" S.S. to remain. Contractor is to pump sewage if it is necessary to ram trap, 8" S.S.

Note: Construct retaining wall along parking between curb & flags, with concrete walk sections of driveways removed on this project. Sta. 19460+ to 20470+ See all sheet # 12

Note: Do not replace pavement north of 71' edge

B.M. 181.66 City standard on S.E. cor. Central & Sheridan

Plan Scale 1"=20'  
Profile Scale 1"=20' Hor.  
1"=4' Vert.



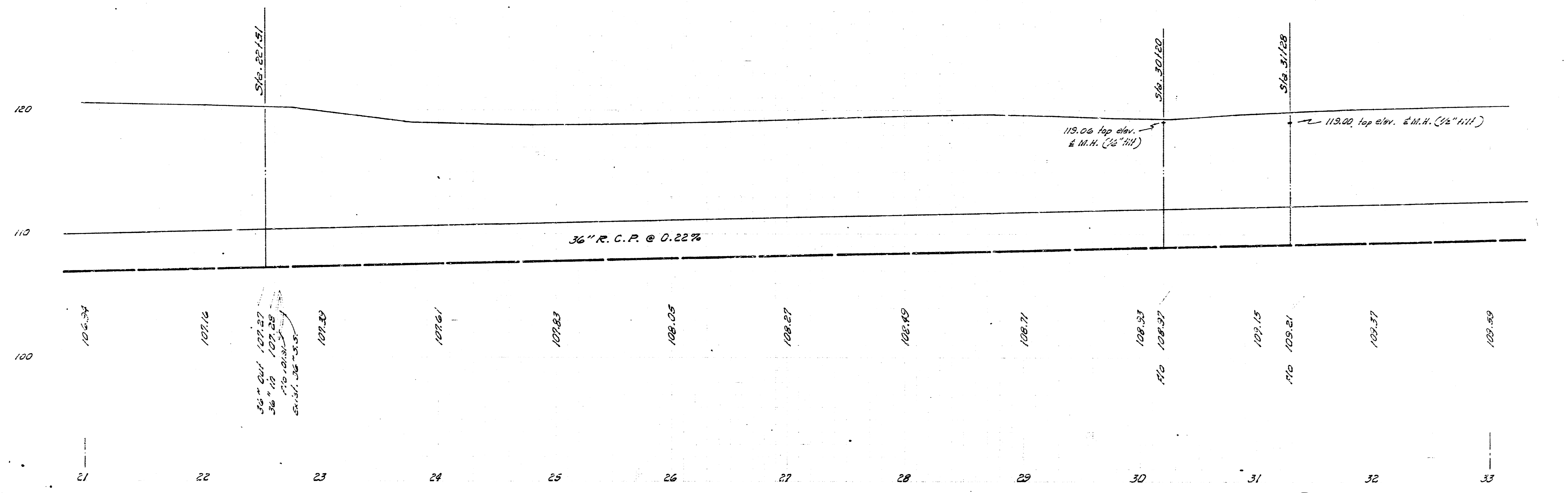
Reference points to iron  
 1. 42.20 E. 11' E. to S.W. cor. small brick building  
 2. 36.26 S.W. to nail in cattle cap on N.W. slab R.P.  
 3. 82.05 N.S. to center of S.E. bolt to R.R. sp. light

Reference points to iron Sta. 31128  
 1. 21' S. to S.W. cor. of 1st light  
 2. 31' S. to S.E. cor. of 1st light  
 3. 31' S. to S.E. cor. of 2nd light

B.M. 119.20 R.R. Spike on S.W. side telegraph pole on N.W. cor. Bickel & Sheridan

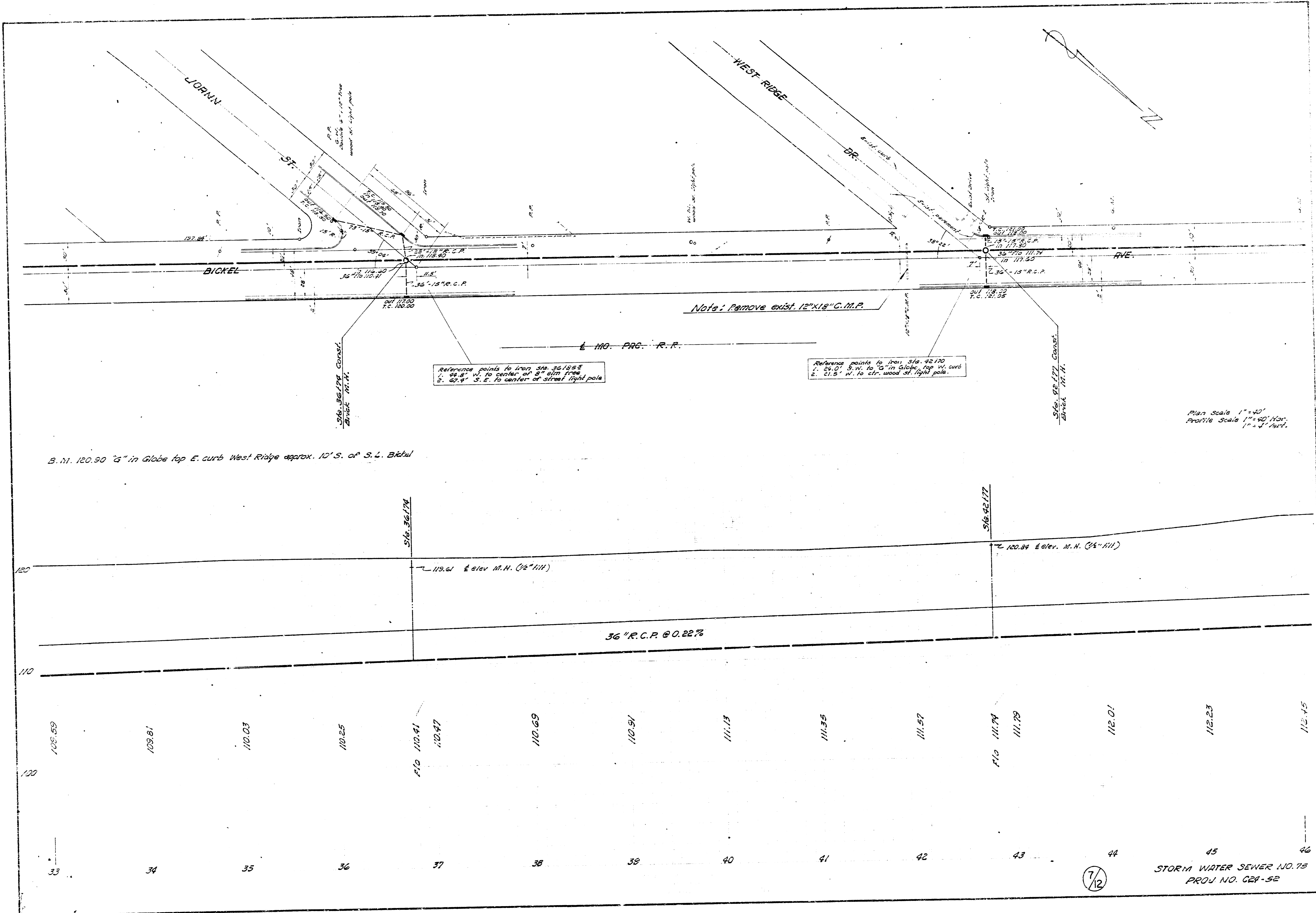
B.M. 120.21 R.R. spike on S.W. side telegraph pole, 27' E. & 46' N. of E. Bickel & Gow Ave.

Plan Scale 1" = 40'  
 Profile Scale 1" = 20' vert.  
 1" = 2' vert.



6/12

STORM WATER SEWER NO. 75  
 P.E.O.U. NO. C24-52

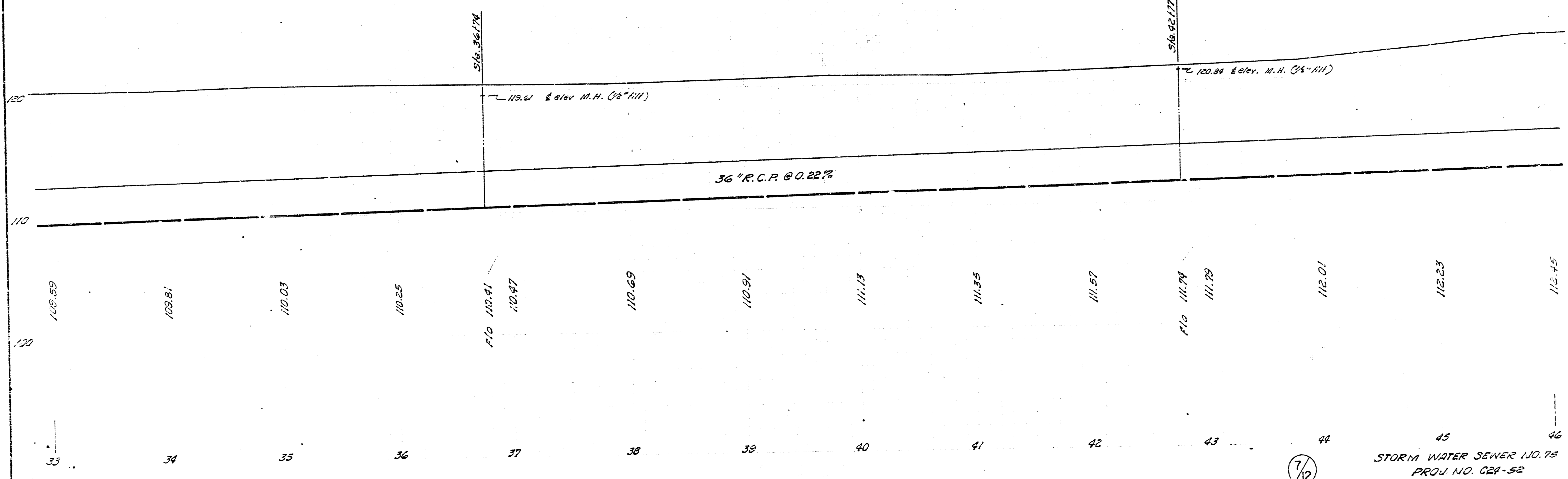


Reference points to Iron Sta. 361855  
 46.8' W. to center of 8" elm tree  
 2.47' S.E. to center of street light pole

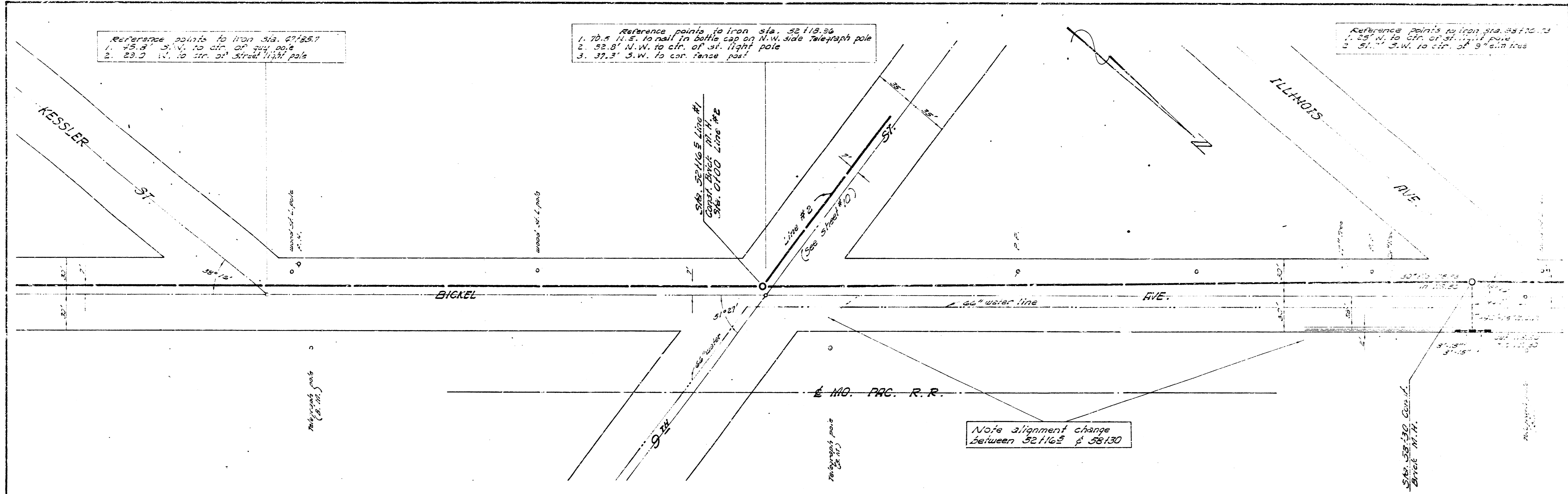
Reference points to Iron Sta. 42170  
 1.25' S.W. to 3" in slope top of curb  
 21.5' W. to str. wood st. light pole

B.M. 120.90 "G" in Globe top E. curb West Ridge approx. 10' S. of S.L. Bickel

Plan Scale 1"=40'  
 Profile Scale 1"=40' Vert.  
 1"=4' Horiz.



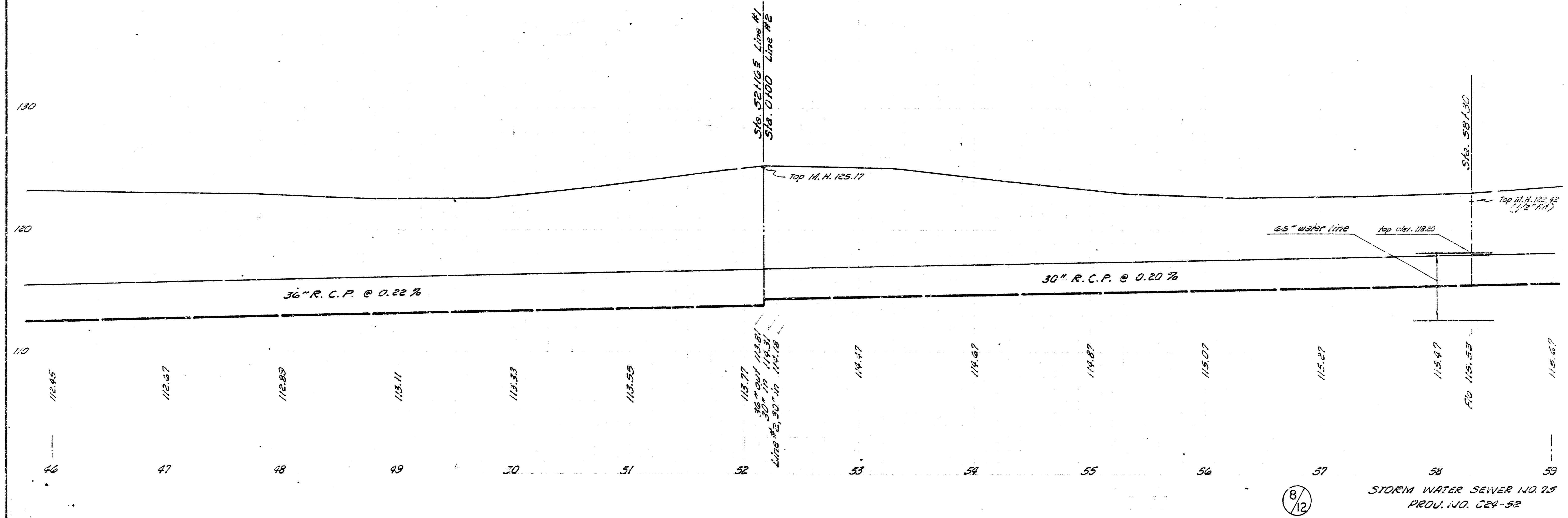
STORM WATER SEWER NO. 75  
 PROJ. NO. 02A-52

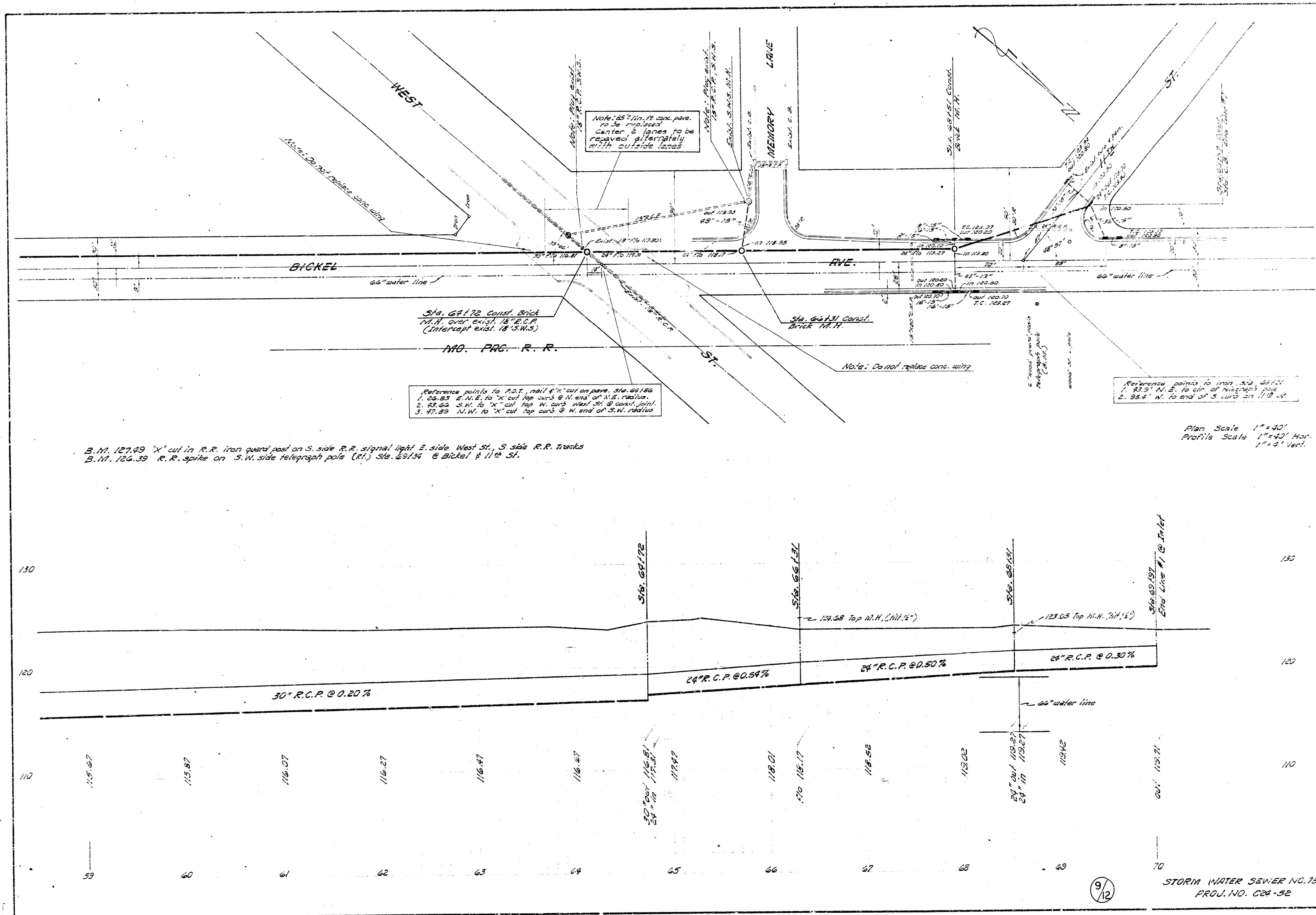


B.M. 122.40 Grader blade in ground on S.W. side telegraph pole (Ct.) Sta. 48124 @ Kessler & Bickel  
 B.M. 126.24 R.R. spike on S.W. side telegraph pole (Rt.) Sta. 52176 @ 92' & Bickel

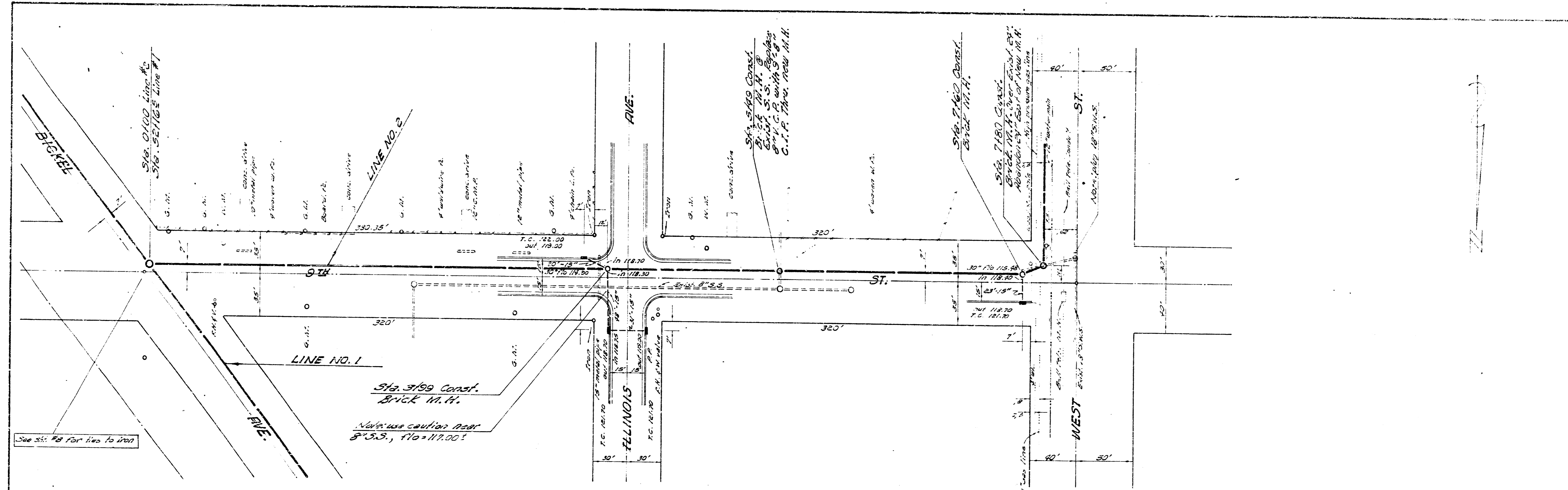
B.M. 123.95 Grader blade in ground on S.W. side telegraph pole (Ct.) Sta. 52177 @ Illinois & Bickel

Plan Scale 1" = 40'  
 Profile Scale 1" = 10' Vert.





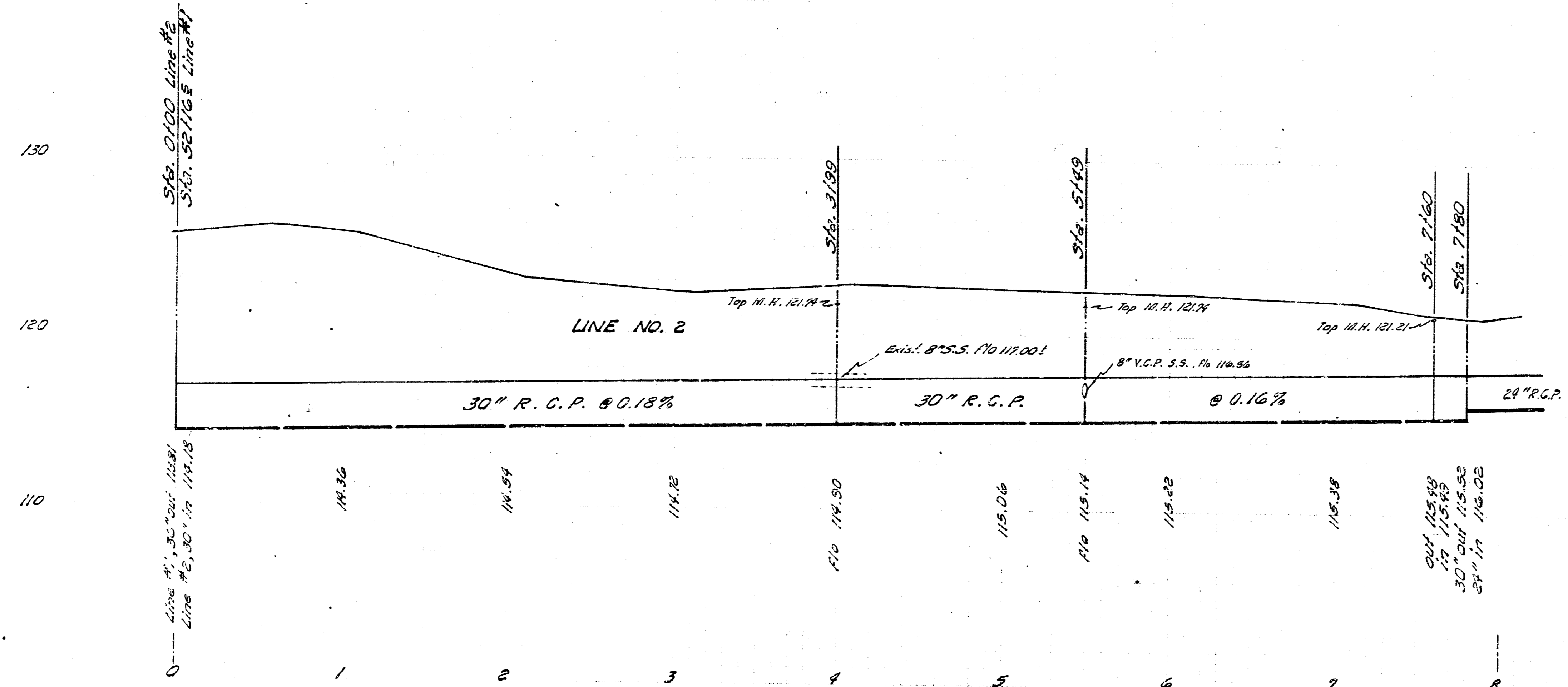
Plan Scale 1"=40'  
 Profile Scale 1"=40' Hor.  
 1"=4' Vert.



B. M. 120.24 R.R. spike S.W. side telegraph pole N.E. side Bieler approx. 55' N. of E 9th St.

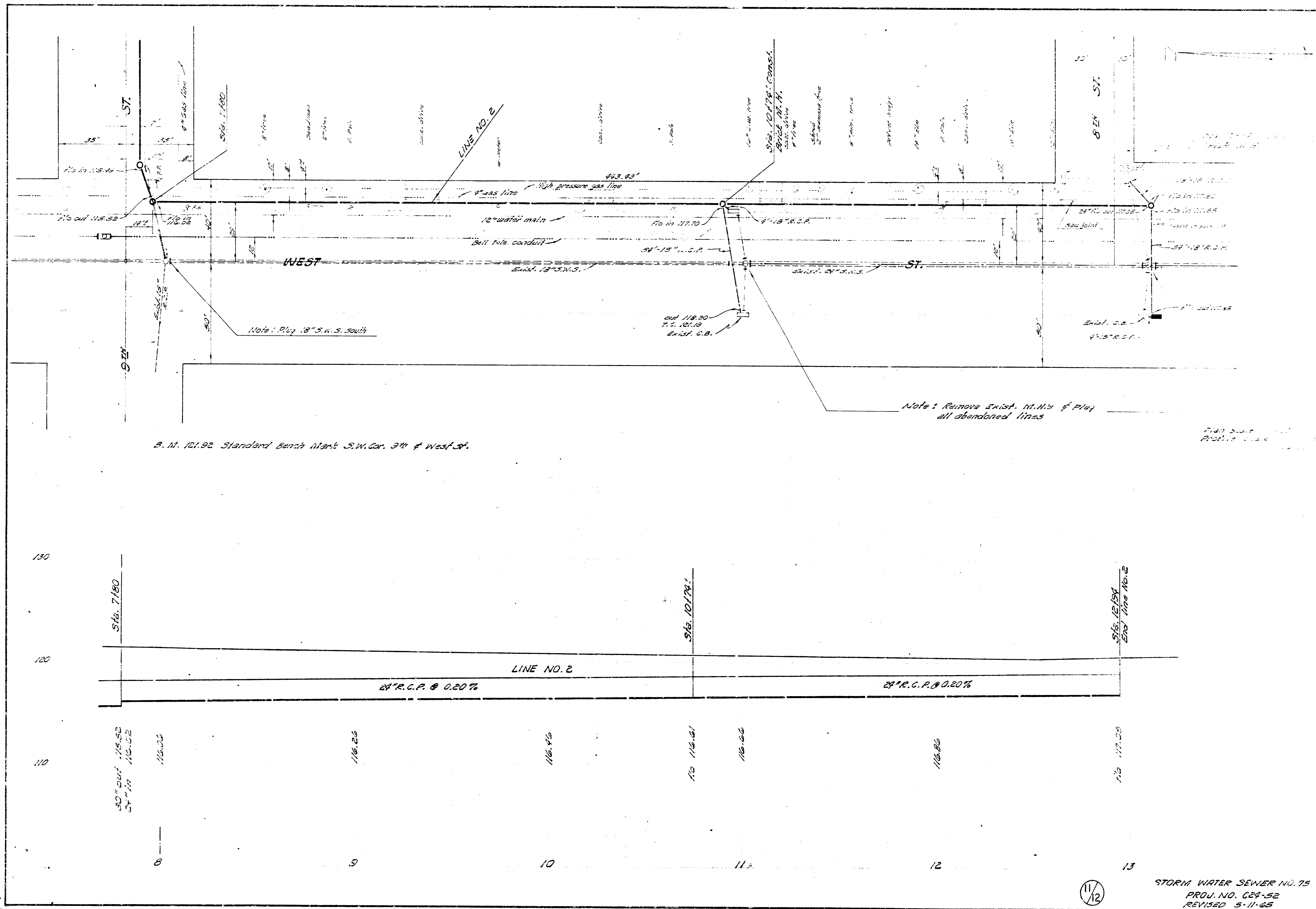
B. M. 121.92 City standard on S.W. cor. 9th & West St.; Note: B.M. adjusted to fit Blake's benches

Plan scale 1"=40'  
Profile scale 1"=4' (vert.)



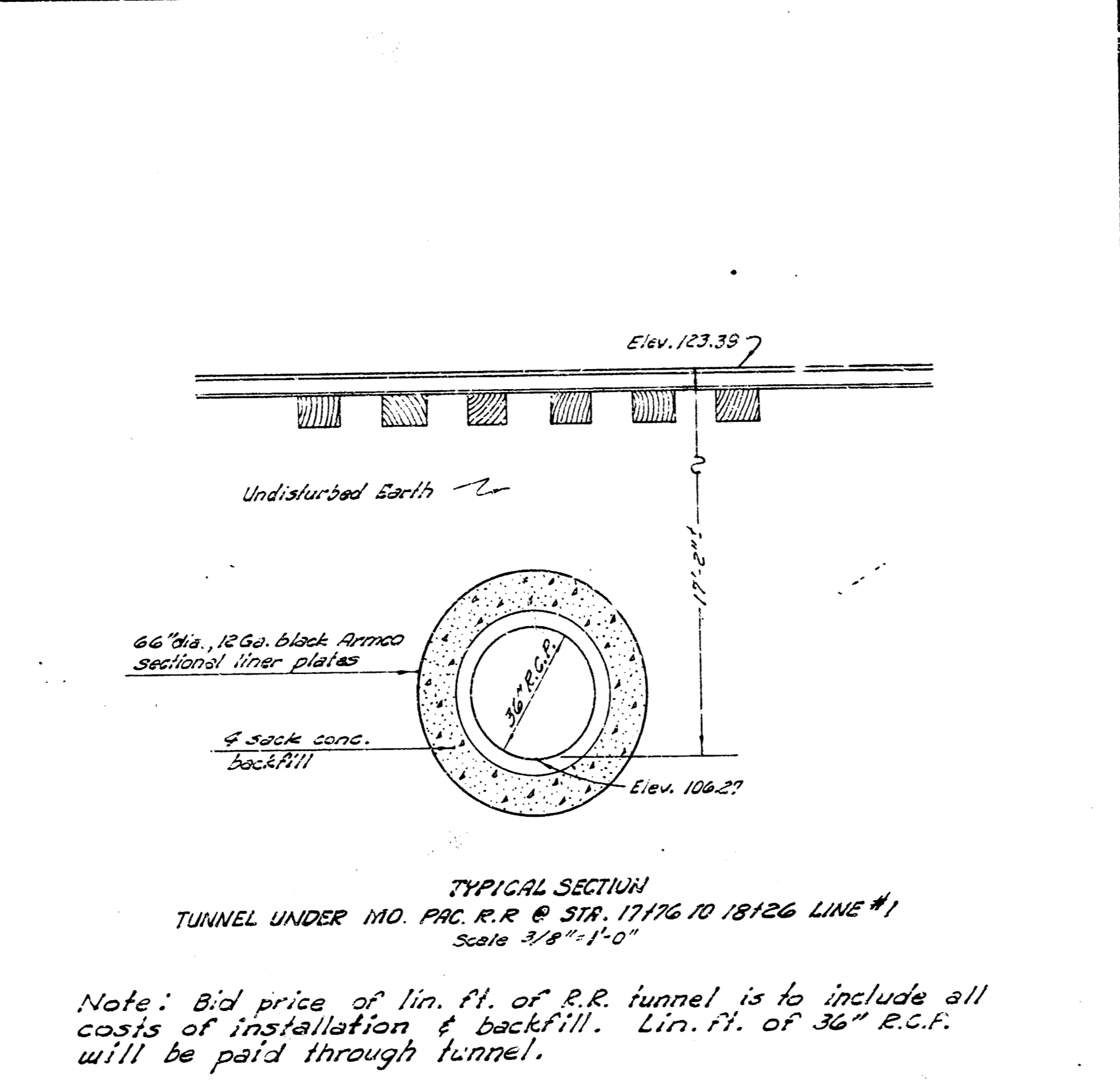
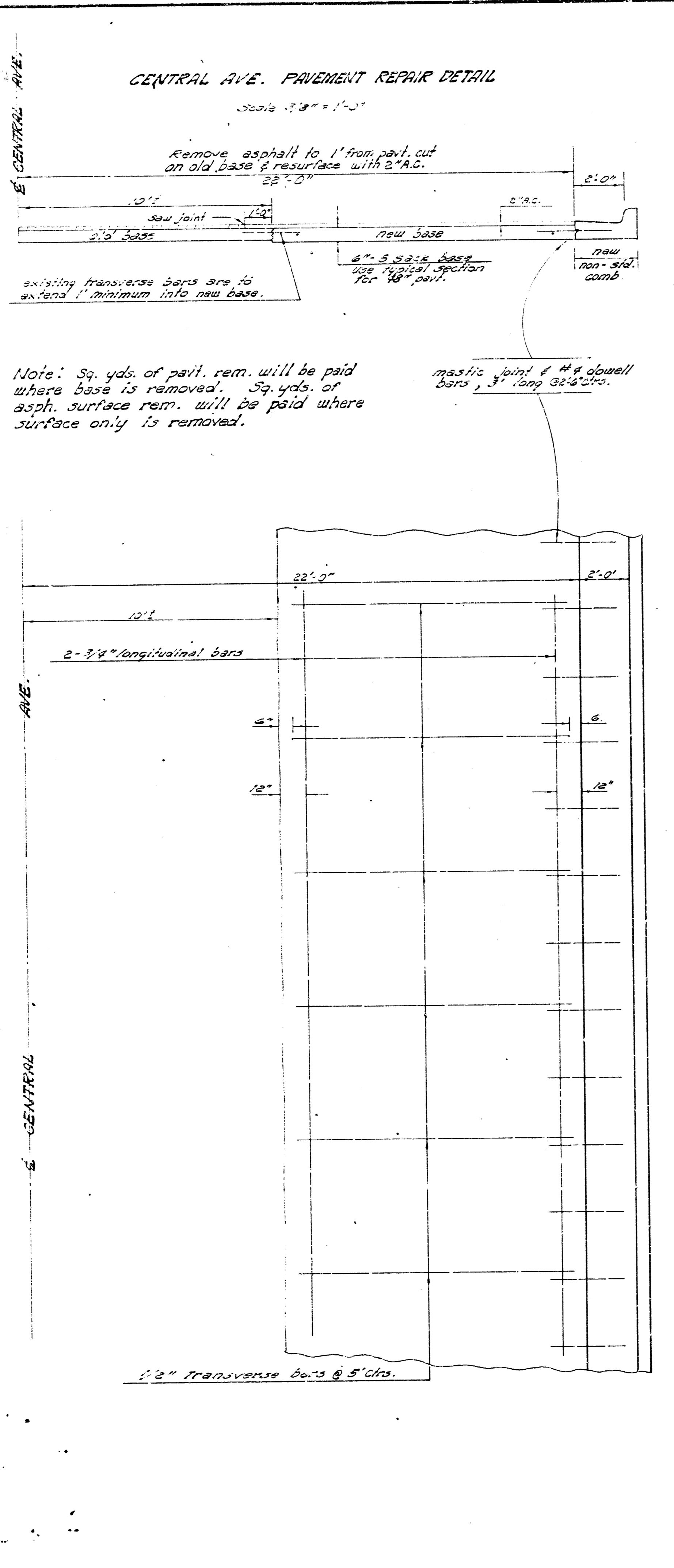
10/12

STORM WATER SEWER NO. 75  
PROJ. NO. C20-52  
REVISED 3-11-65



B. M. 121.92 Standard Bench Mark S.W. Cor. 3rd & West St.

Plan Scale  
Profile Scale

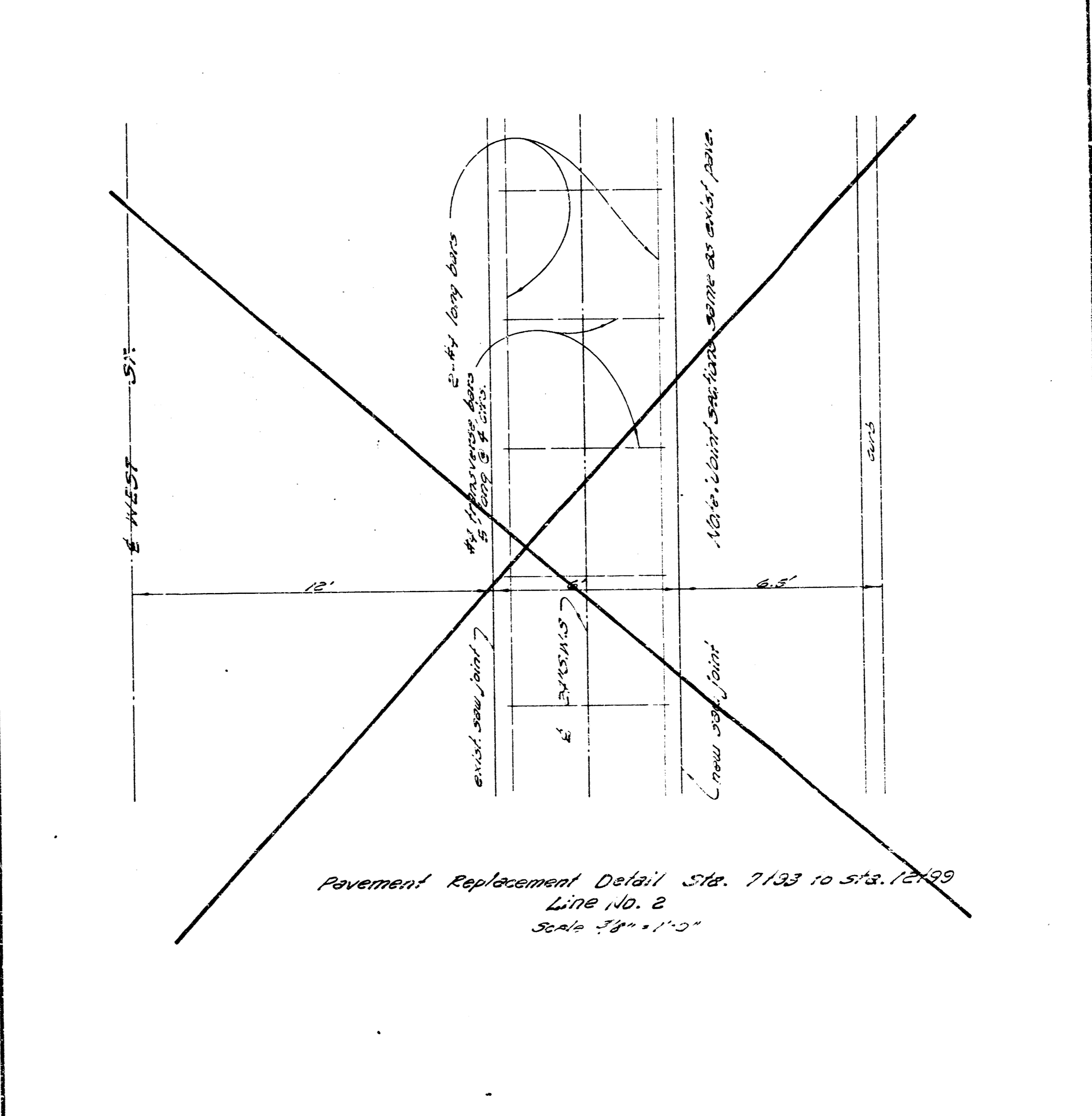
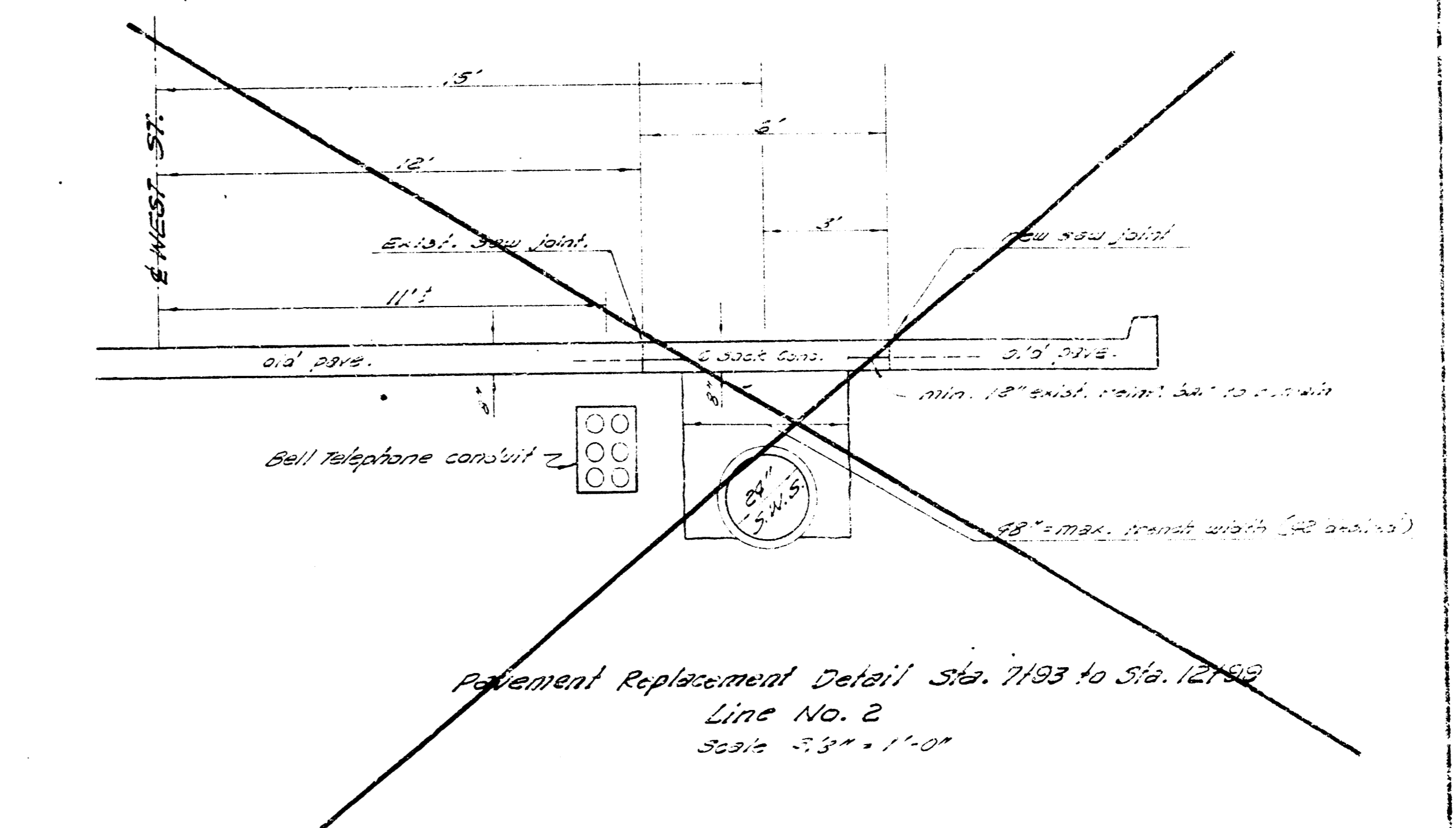
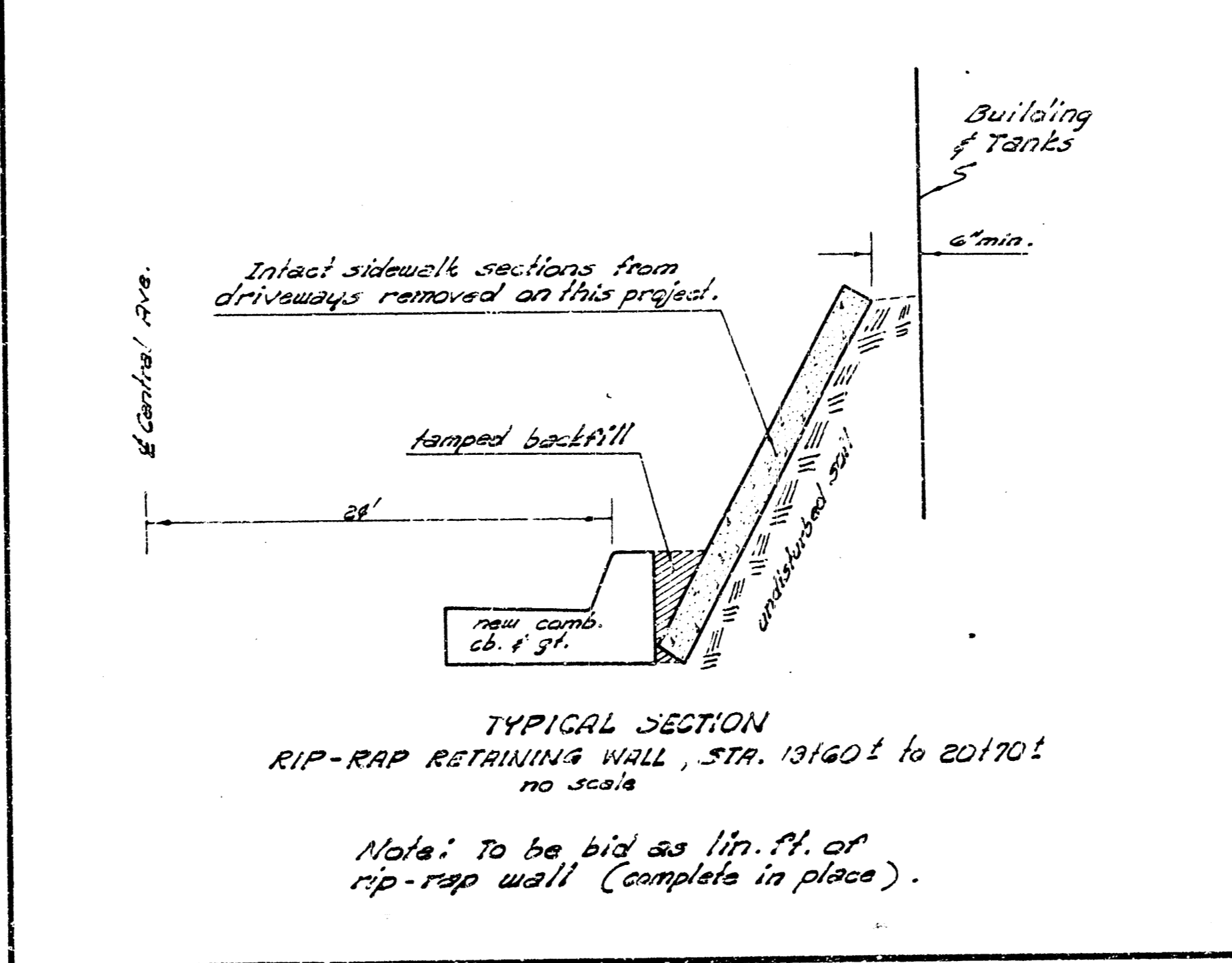


Note: All backfill is to be flushed & vibrated. Cost of flushing & vibrating is to be included in the bid price of the pipe. If excavated material is unsuitable for backfill, sand fill will be used. Mechanically temp backfill @ inlets.

Brick manholes on 36" dia. pipe are to be 5' diameter (inside) with 12" masonry walls & 9" floor.

Inlets on Bickel Ave. will be constructed after paving or as determined by the Engineer.

Any excavation necessary for the pavement construction on this project will be included in the bid price of pavement.



12/12

STORM WATER SEWER NO. 75

PROJ. NO. CSM-52

REVISED 5-11-65