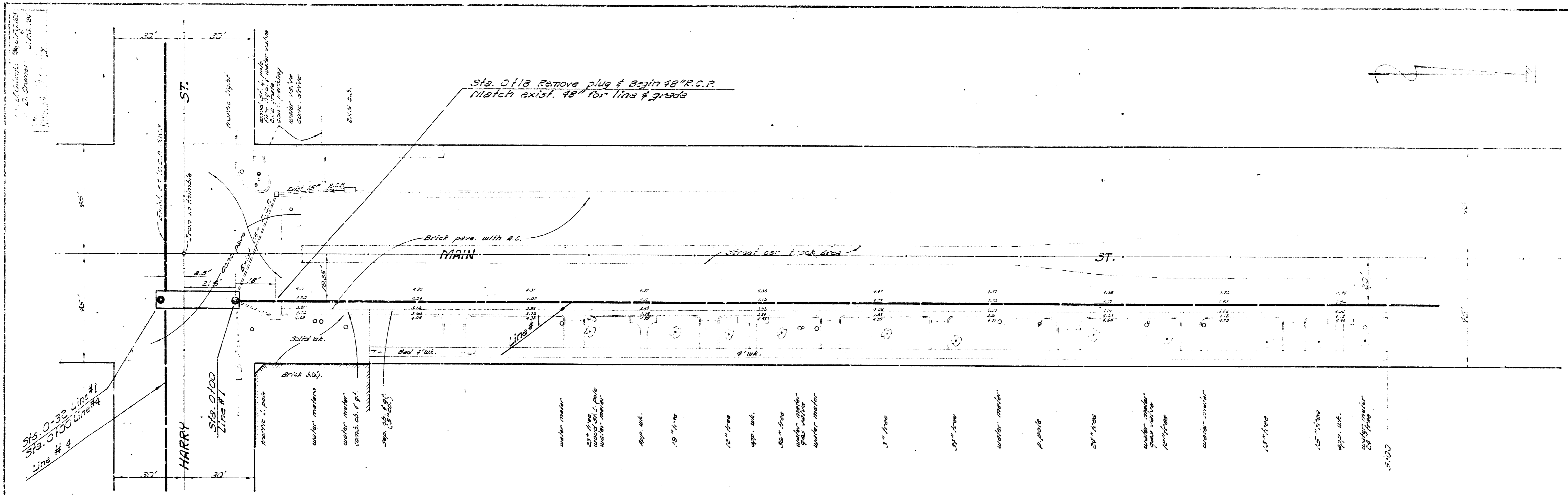


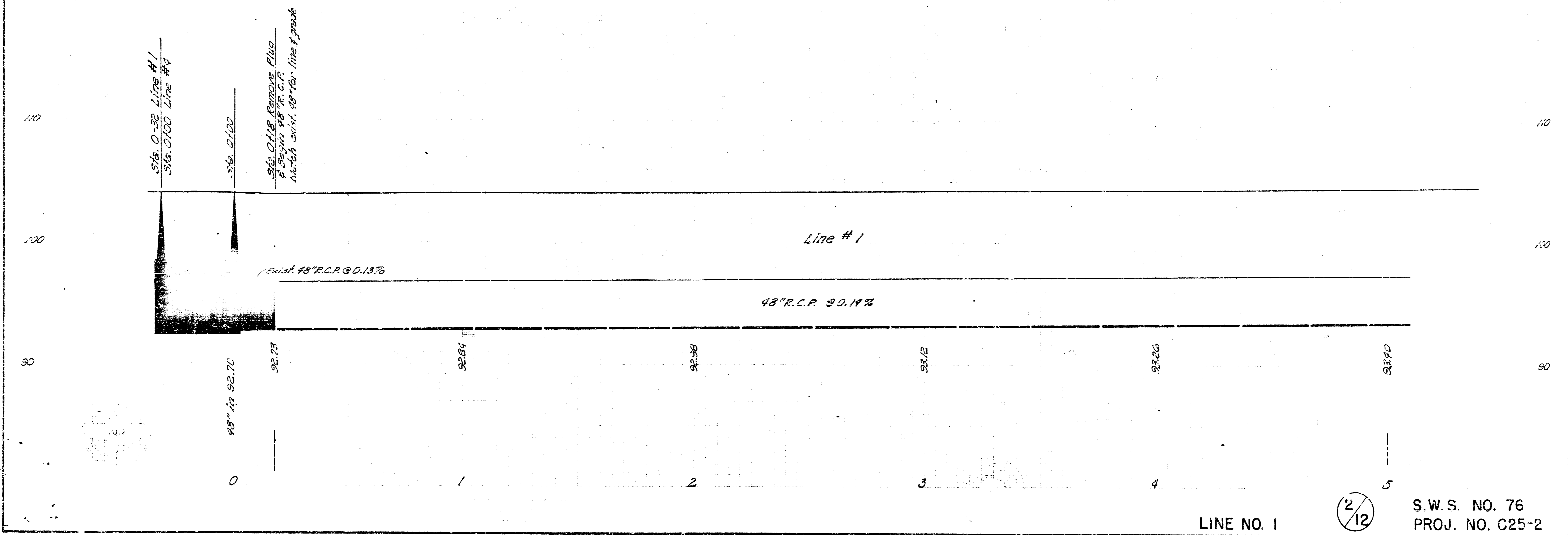
STORM WATER SEWER NO. 76

CITY OF WICHITA, KANSAS
 B.E. SMITH, CITY ENGINEER
 PROJ. NO. C25-2



B. N. 104.26 "x" cut on W. end radius on N.W. cor. Harry & Main (set by John Kraus)

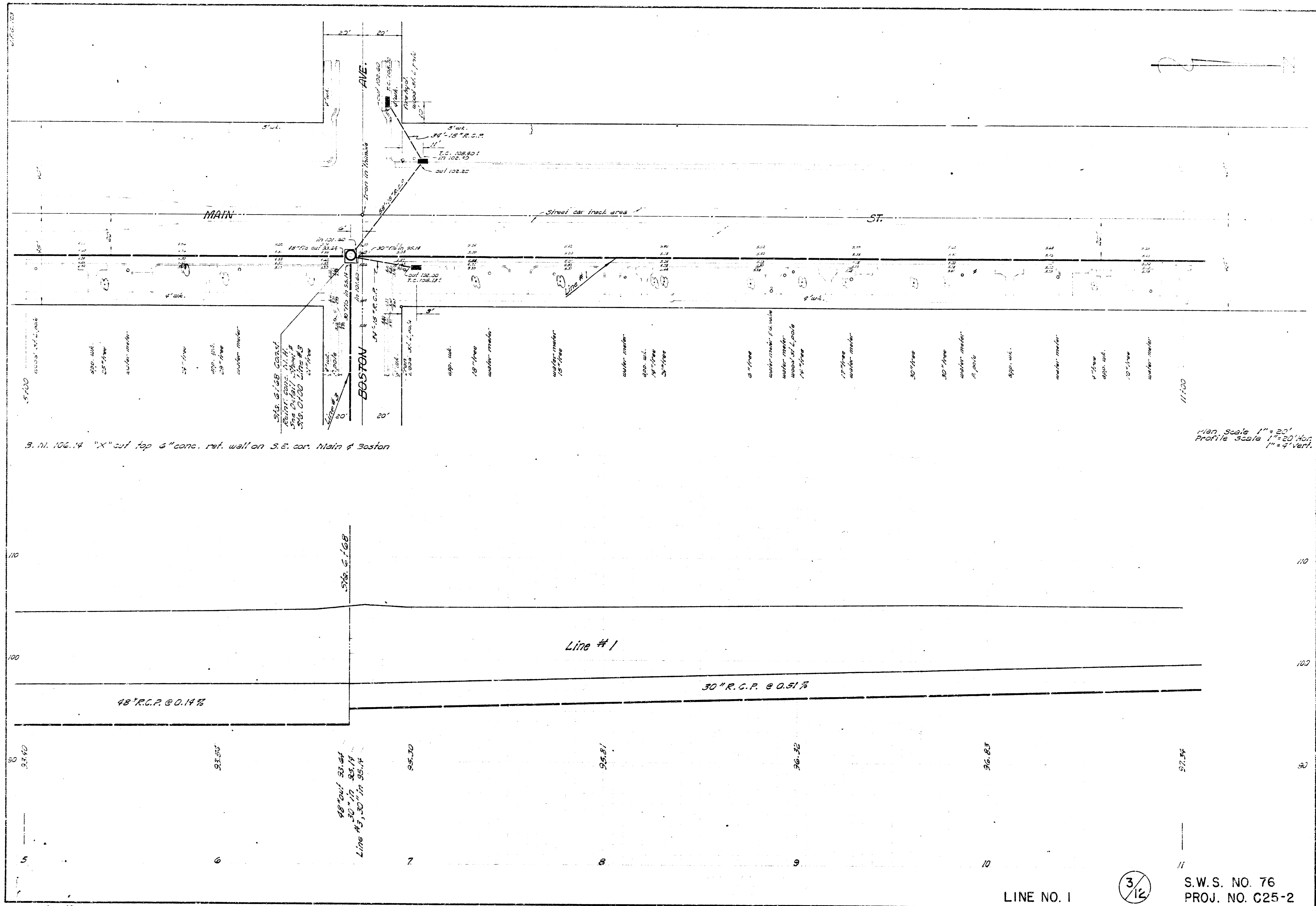
Plan scale 1"=20'
Profile scale 1"=20' hor.
1"=4' vert.



LINE NO. 1

2/12

S.W.S. NO. 76
PROJ. NO. C25-2



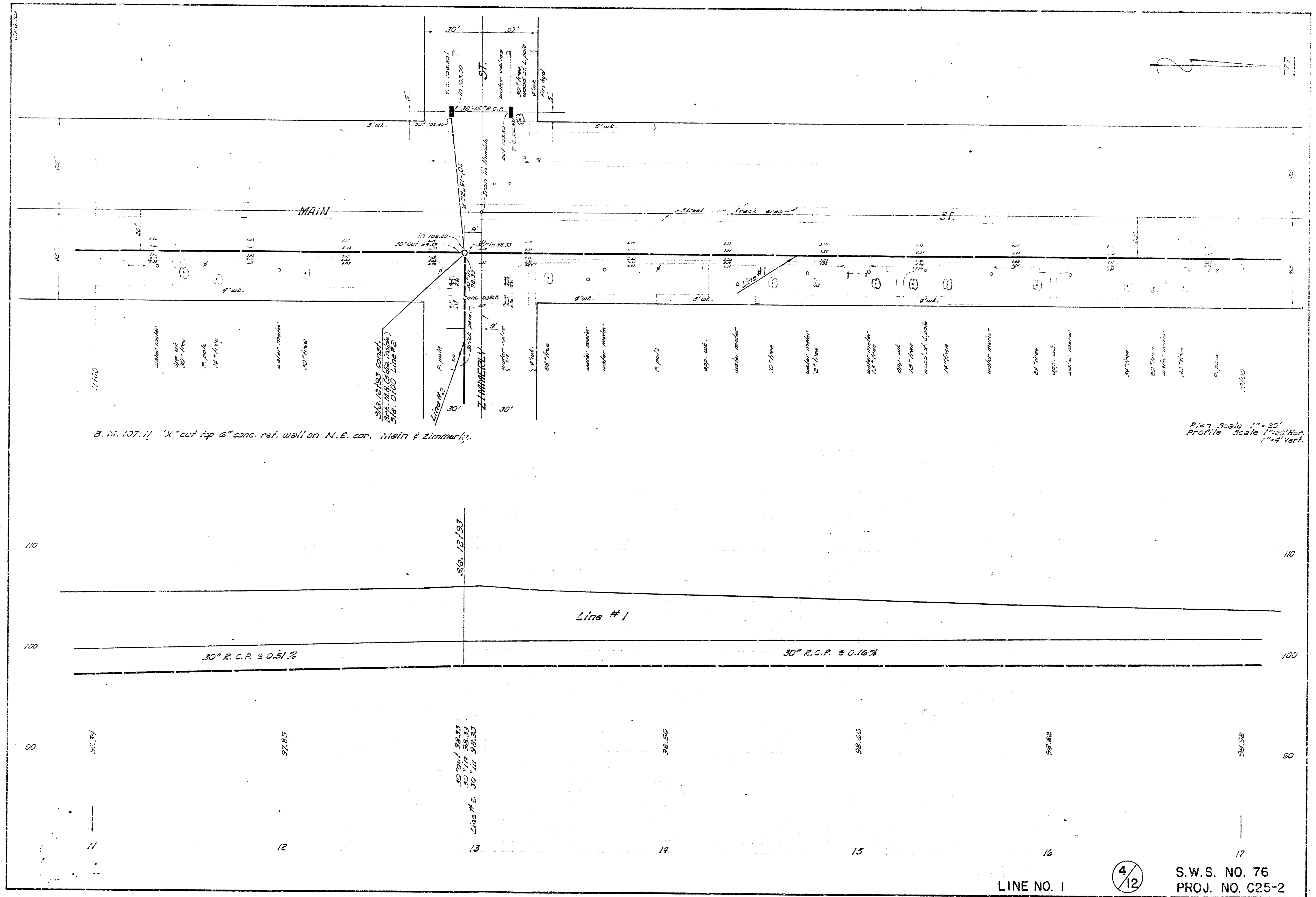
B. N. 106.14 "X" cut top 6" conc. ret. wall on S.E. cor. Main & Boston

Plan Scale 1"=20'
Profile Scale 1"=20' Vert.

LINE NO. 1

3/12

S.W.S. NO. 76
PROJ. NO. C25-2



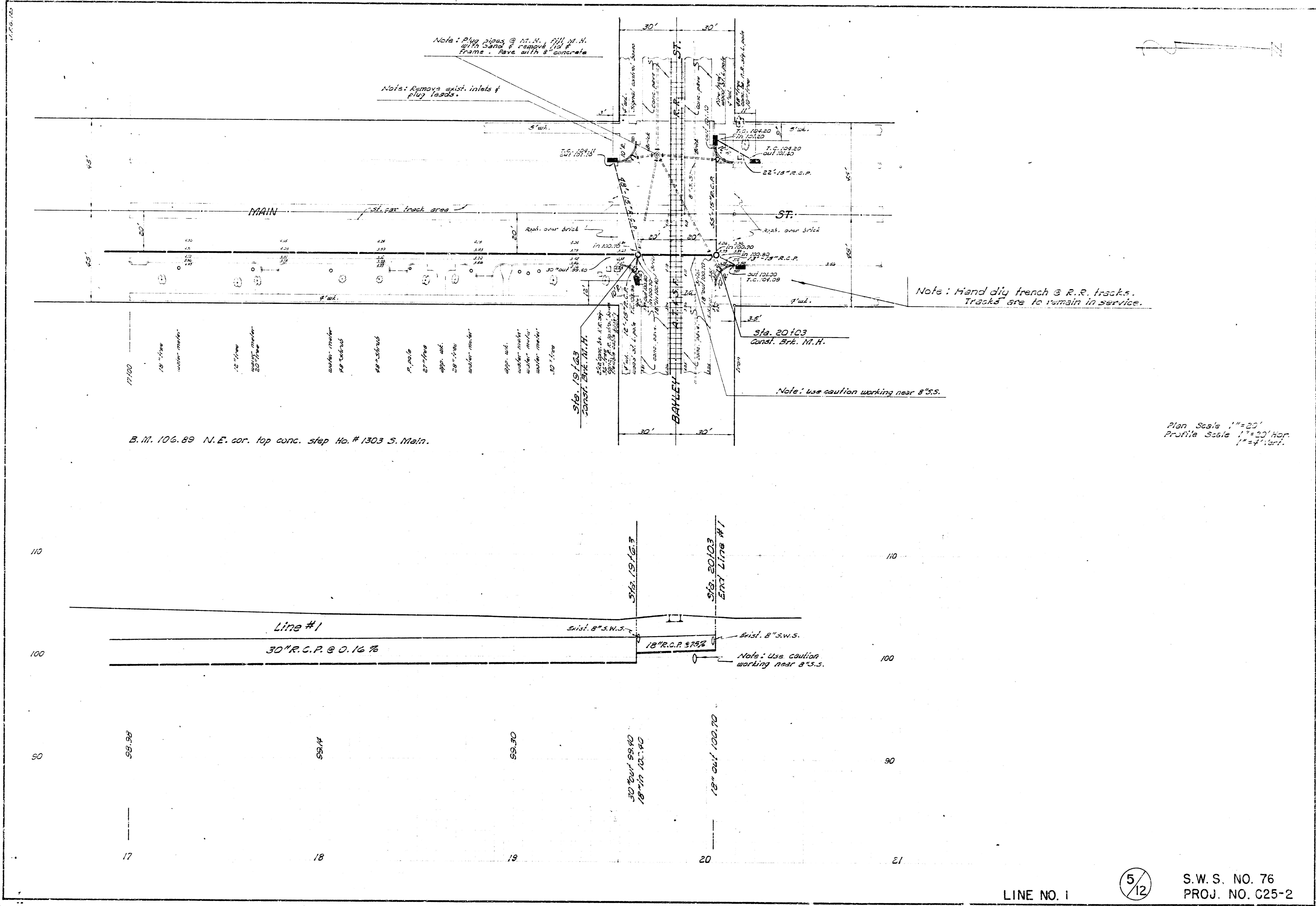
B. M. 107.11 "X" cut top 6" conc. ref. wall on N.E. cor. Main & Zimmerly.

Plan Scale 1" = 20'
Profile Scale 1" = 2' Hor.
1" = 4' Vert.

LINE NO. 1

4/12

S.W.S. NO. 76
PROJ. NO. C25-2



Note: Plug pipes @ 15' N. of 111' N.H. with Sand & gravel 10' Frame. pave with 8" concrete

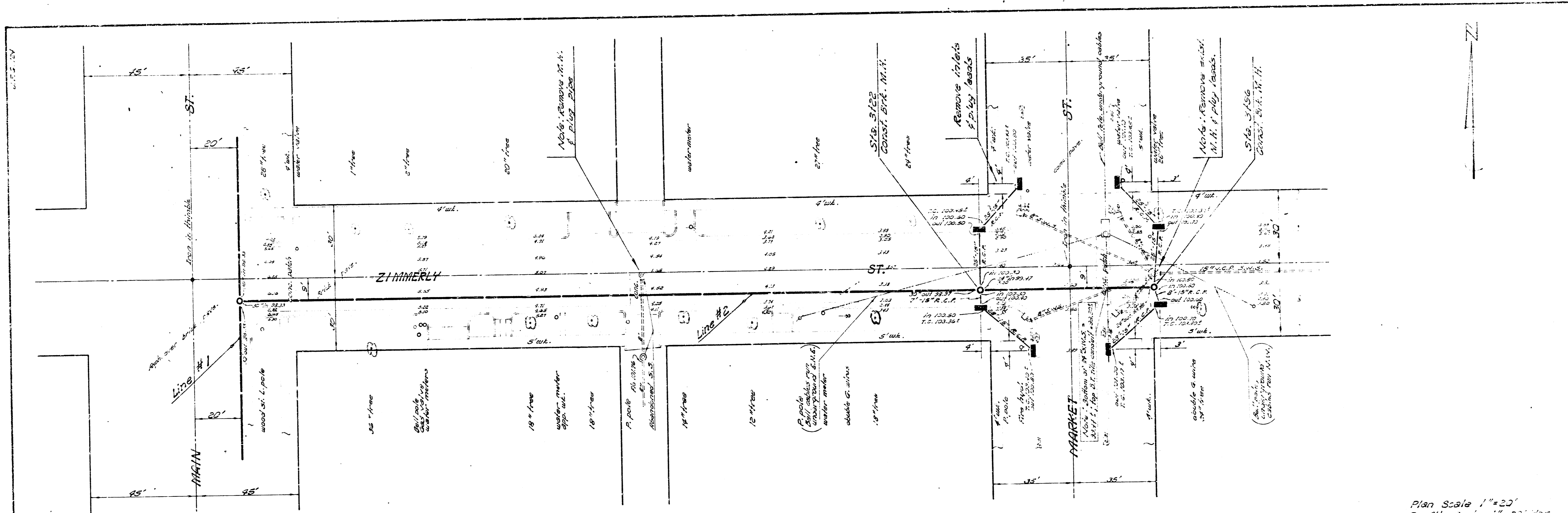
Note: Remove exist. inlets & plug leads.

Note: Hand dig trench @ R.R. tracks. Tracks are to remain in service.

Note: Use caution working near 8" S.S.

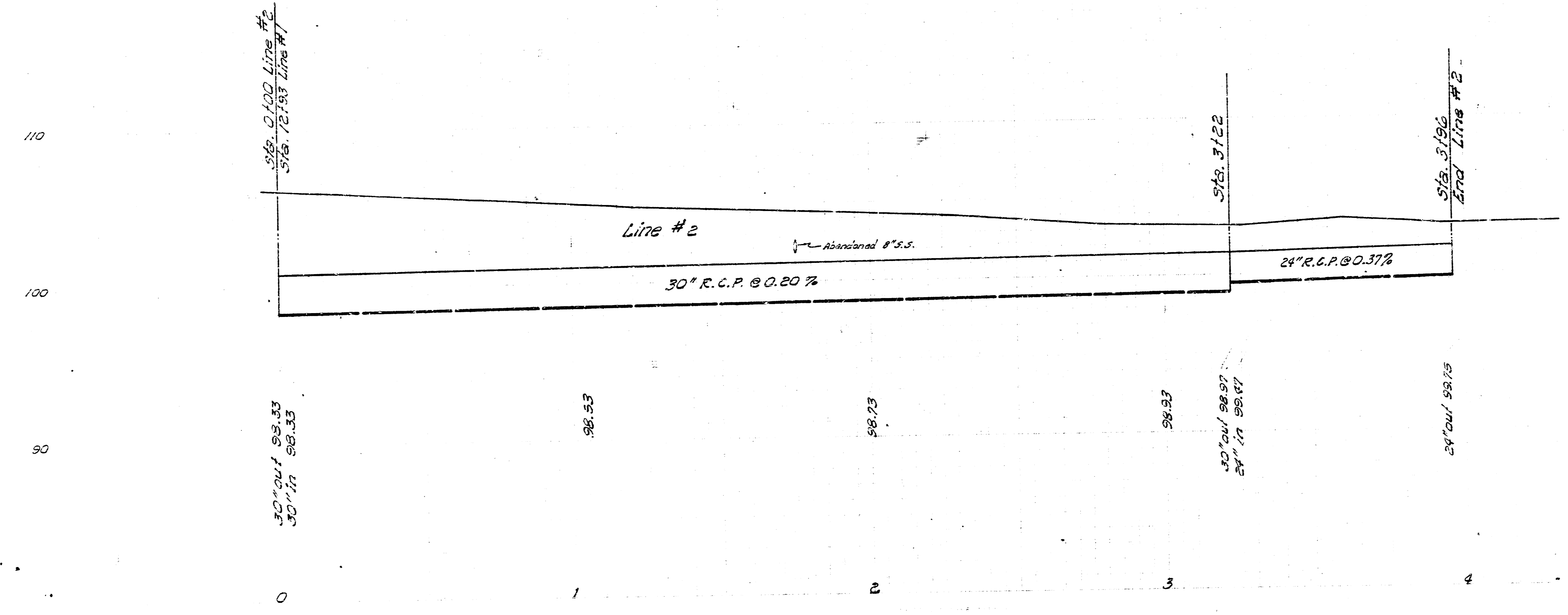
B. 11. 106. 89 N.E. cor. step No. # 1303 S. Main.

Plan Scale 1"=20'
Profile Scale 1"=20' hor.
1"=4' vert.



Plan Scale 1"=20'
 Profile Scale 1"=20' Hor.
 1"=4' Vert.

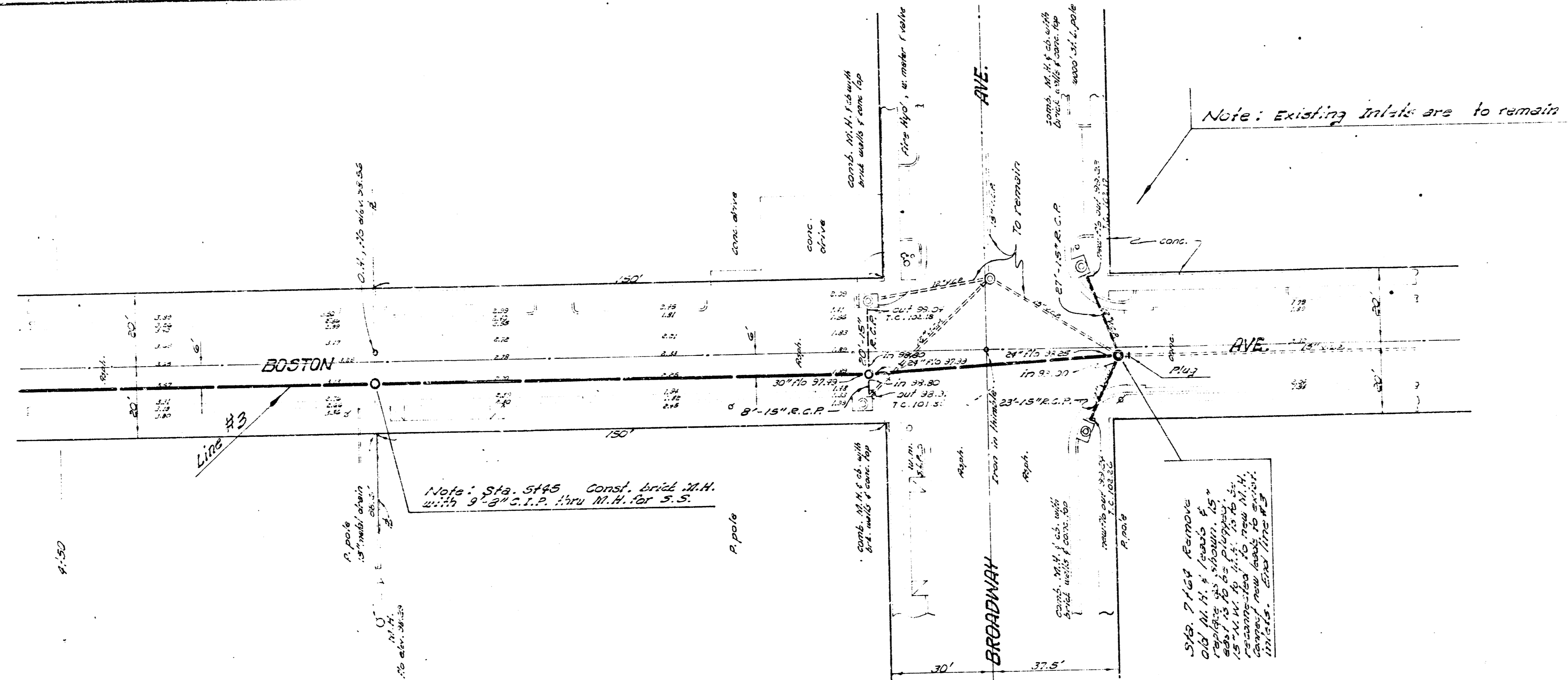
B.M. 107.11 "X" cut top 6" conc. ret wall on N.E. cor Main & Zimmerly



LINE NO. 2

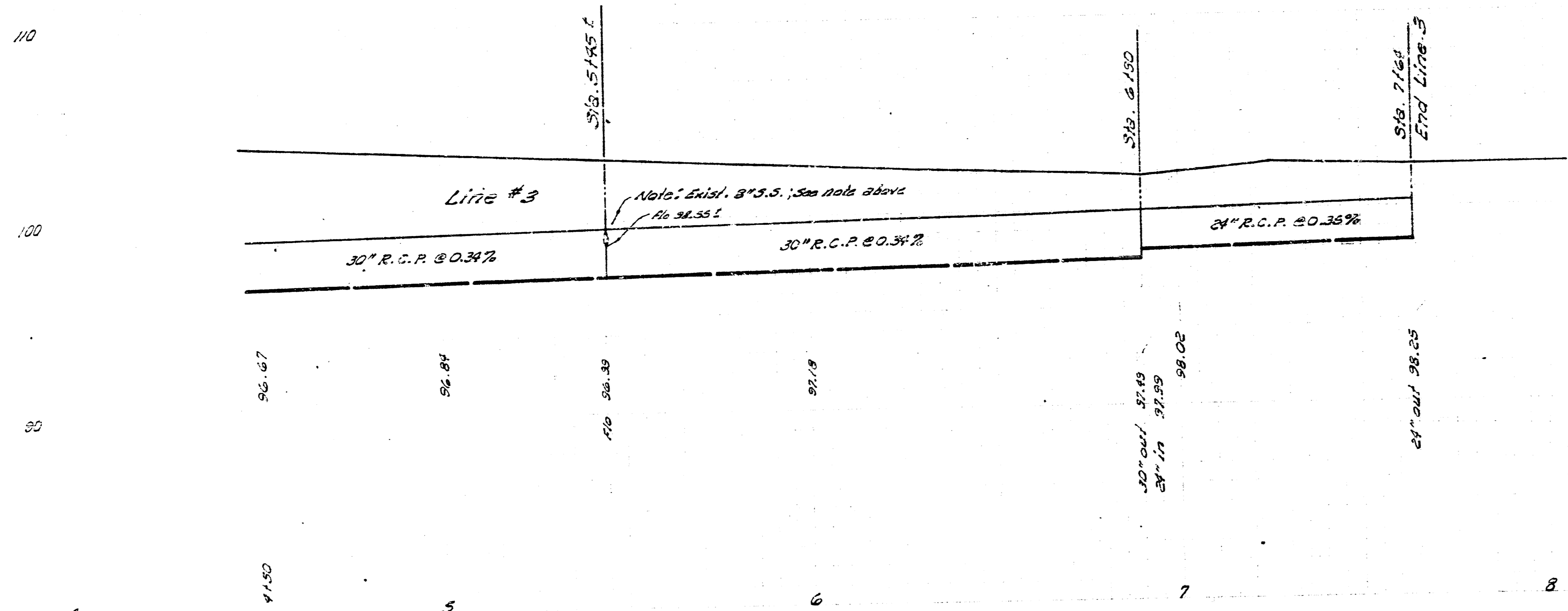
6/12

S.W.S. NO. 76
 PROJ. NO. C25-2



S. M. 103.30 "D" out top 6" conc. ret. well on S.E. cor. Boston & Broadway

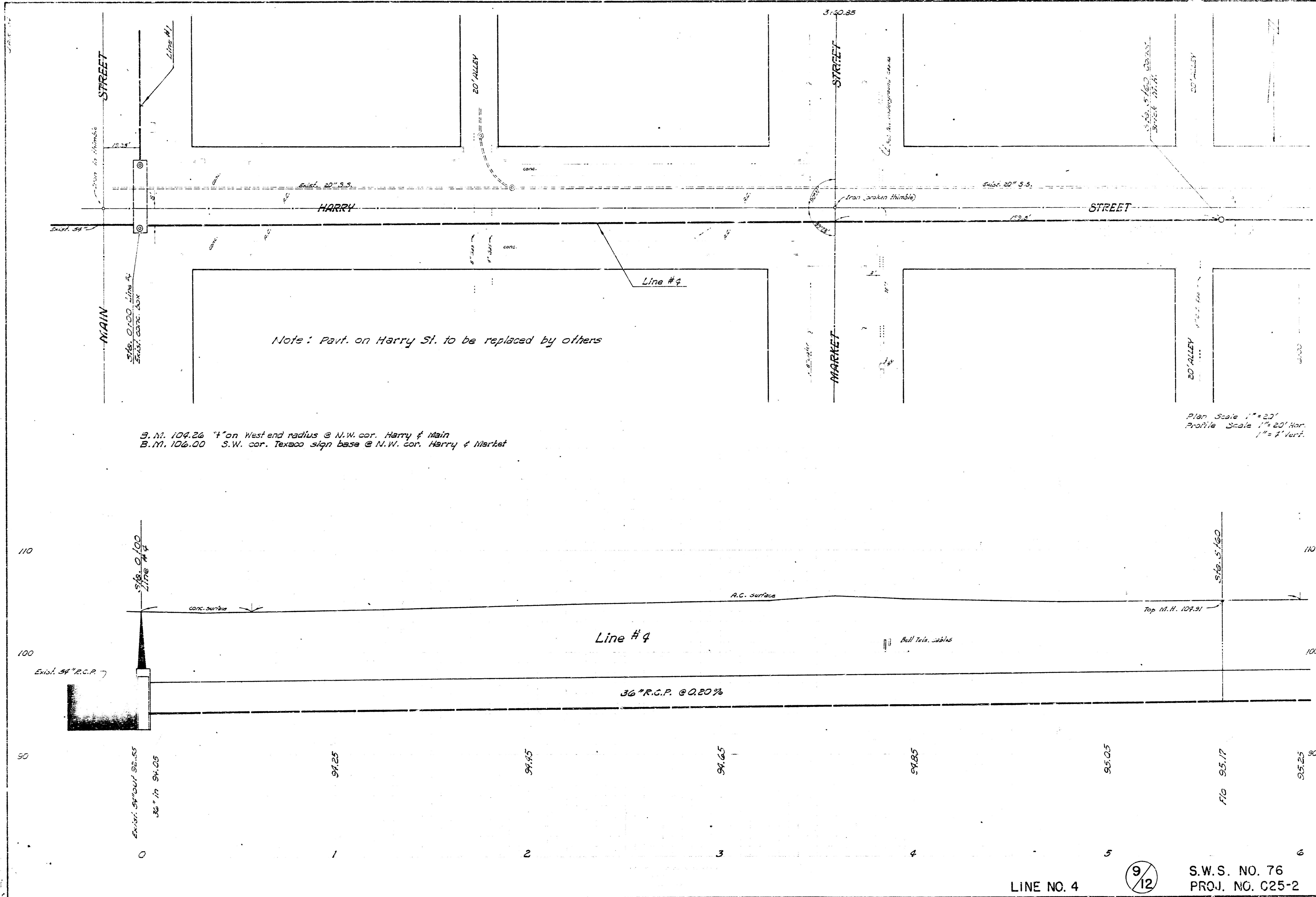
Plan Scale 1" = 20'
Profile Scale 1" = 20' Vert.
1" = 4' Hor.



LINE NO. 3

8/12

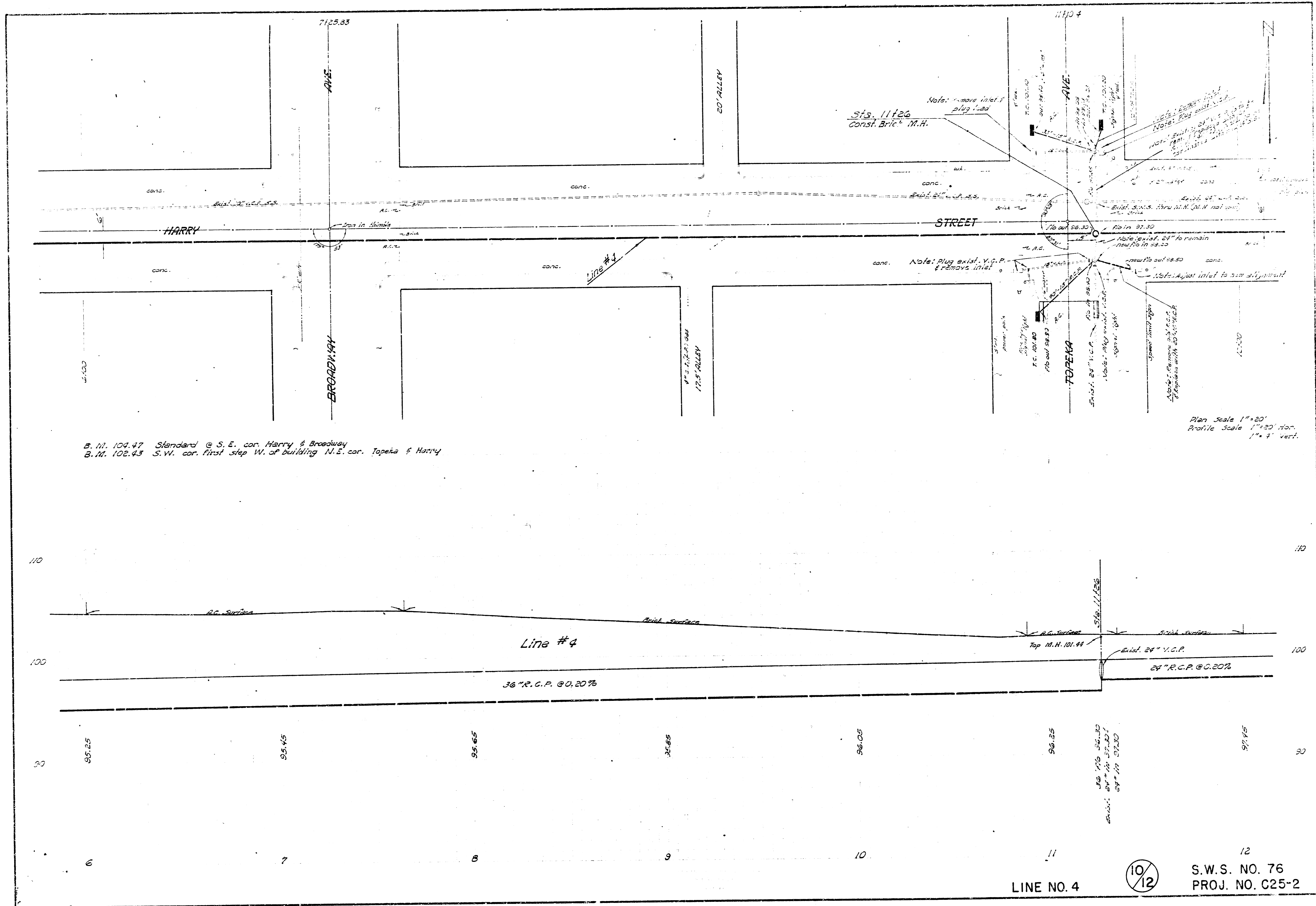
S.W.S. NO. 76
PROJ. NO. C25-2



LINE NO. 4

9/12

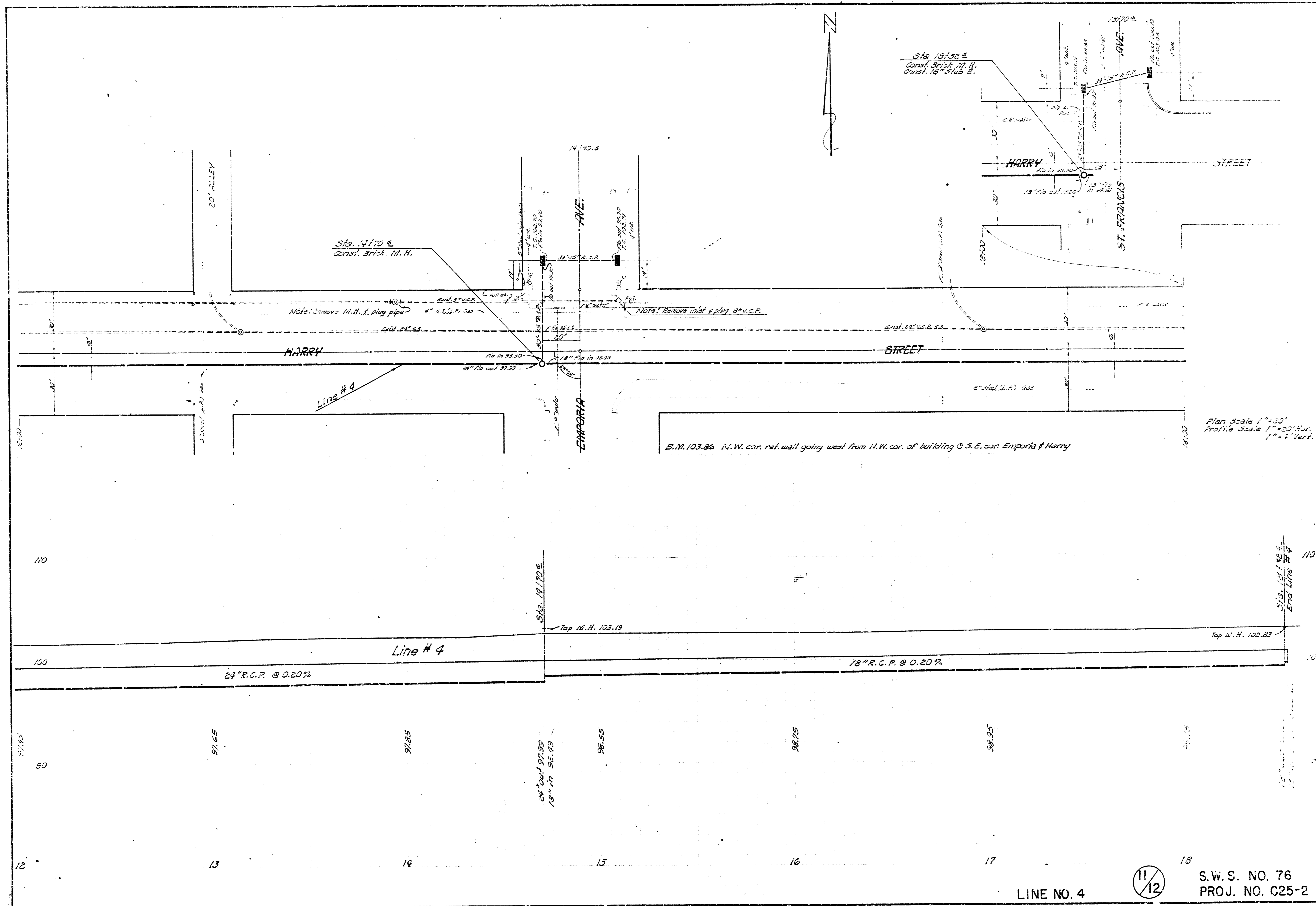
S.W.S. NO. 76
PROJ. NO. C25-2



B.M. 104.47 Standard @ S.E. cor. Harry & Broadway
 B.M. 102.43 S.W. cor. First step W. of building N.E. cor. Topewa & Harry

Plan Scale 1"=20'
 Profile Scale 1"=20' Hor.
 1"=4' Vert.

LINE NO. 4 10/12 S.W.S. NO. 76
 PROJ. NO. C25-2



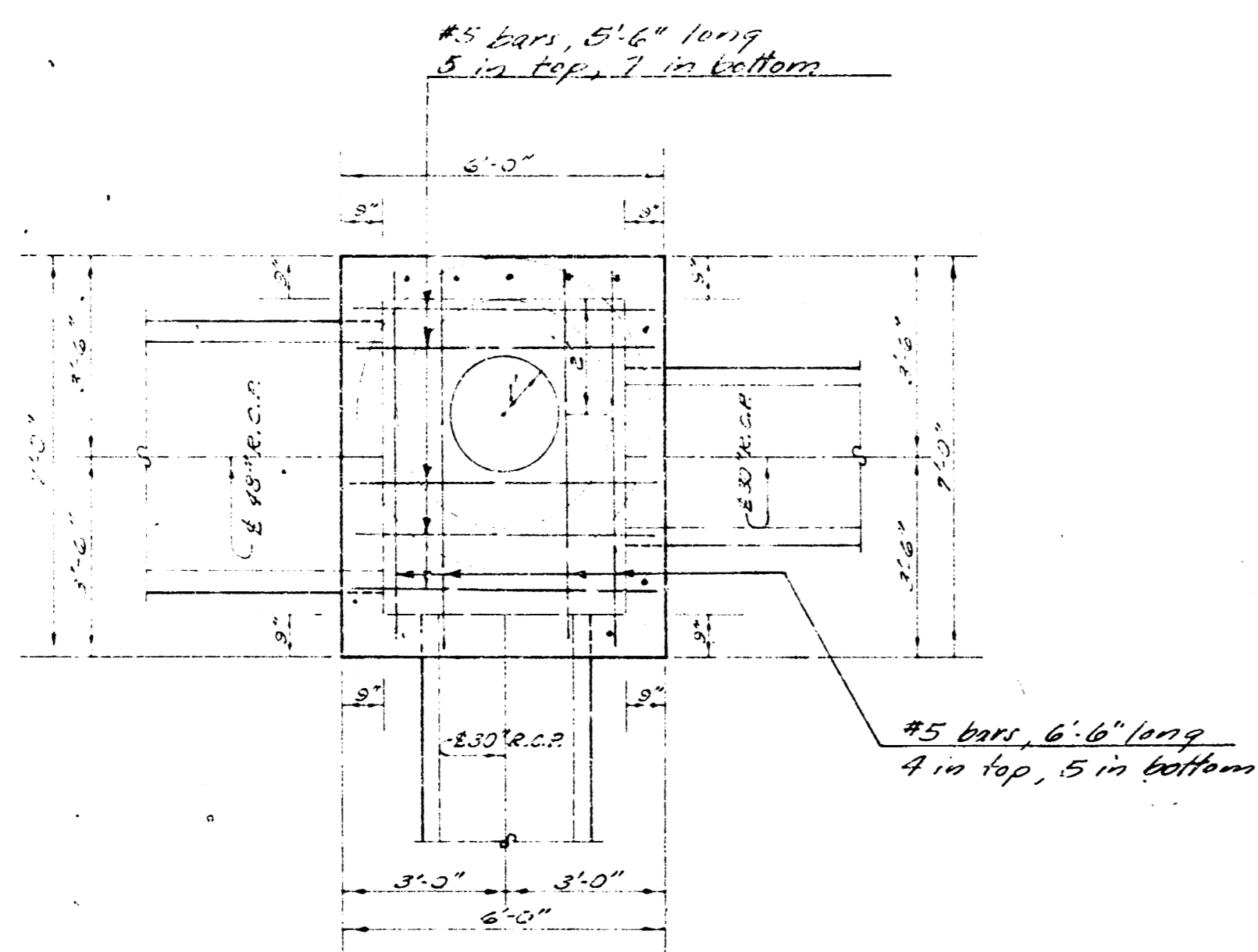
Plan Scale 1"=20'
 Profile Scale 1"=20' Hor.
 1"=1' Vert.

B.M. 103.86 N.W. cor. ref. wall going west from N.W. cor. of building @ S.E. cor. Emporia & Harry

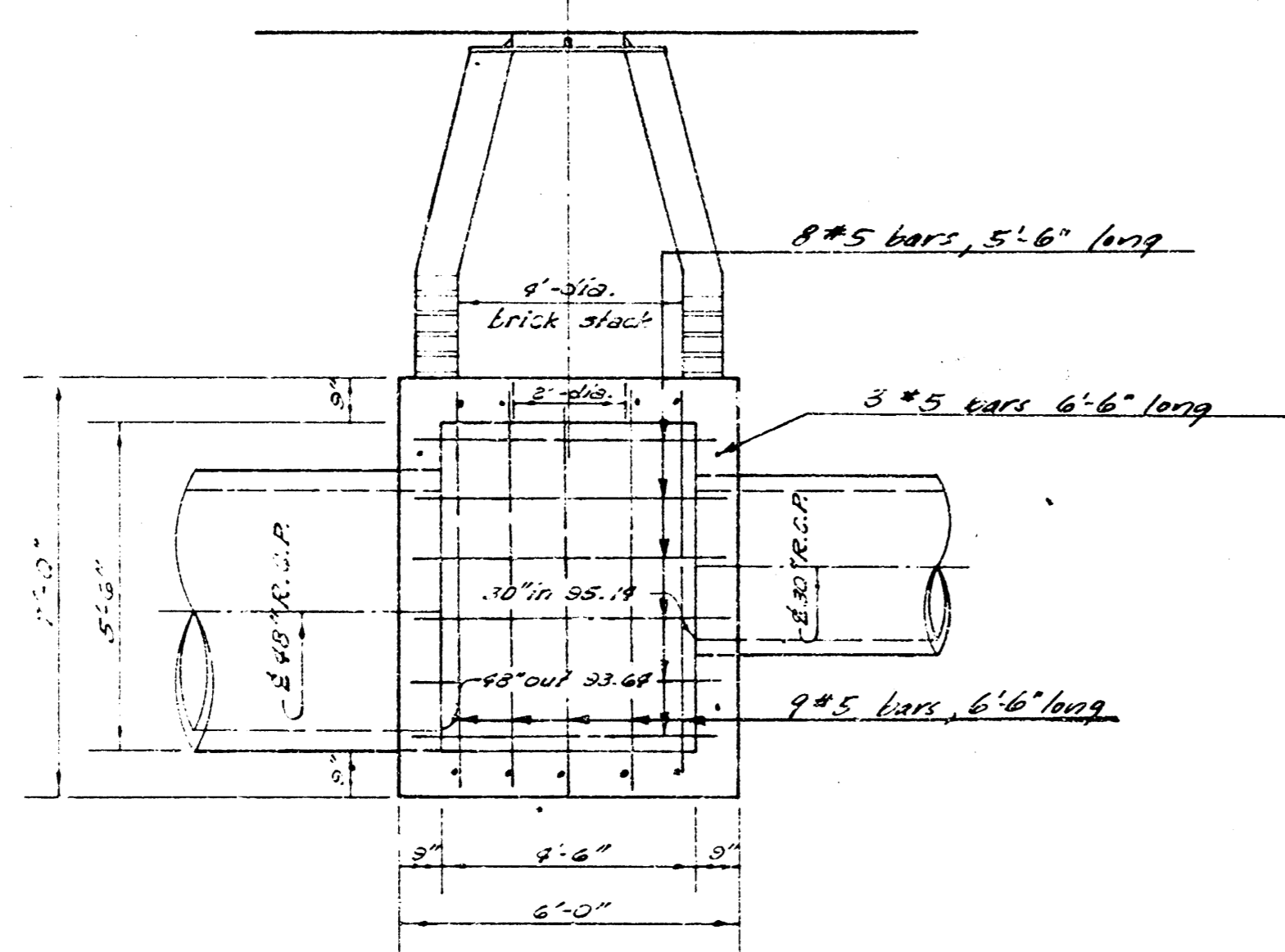
11/12

LINE NO. 4

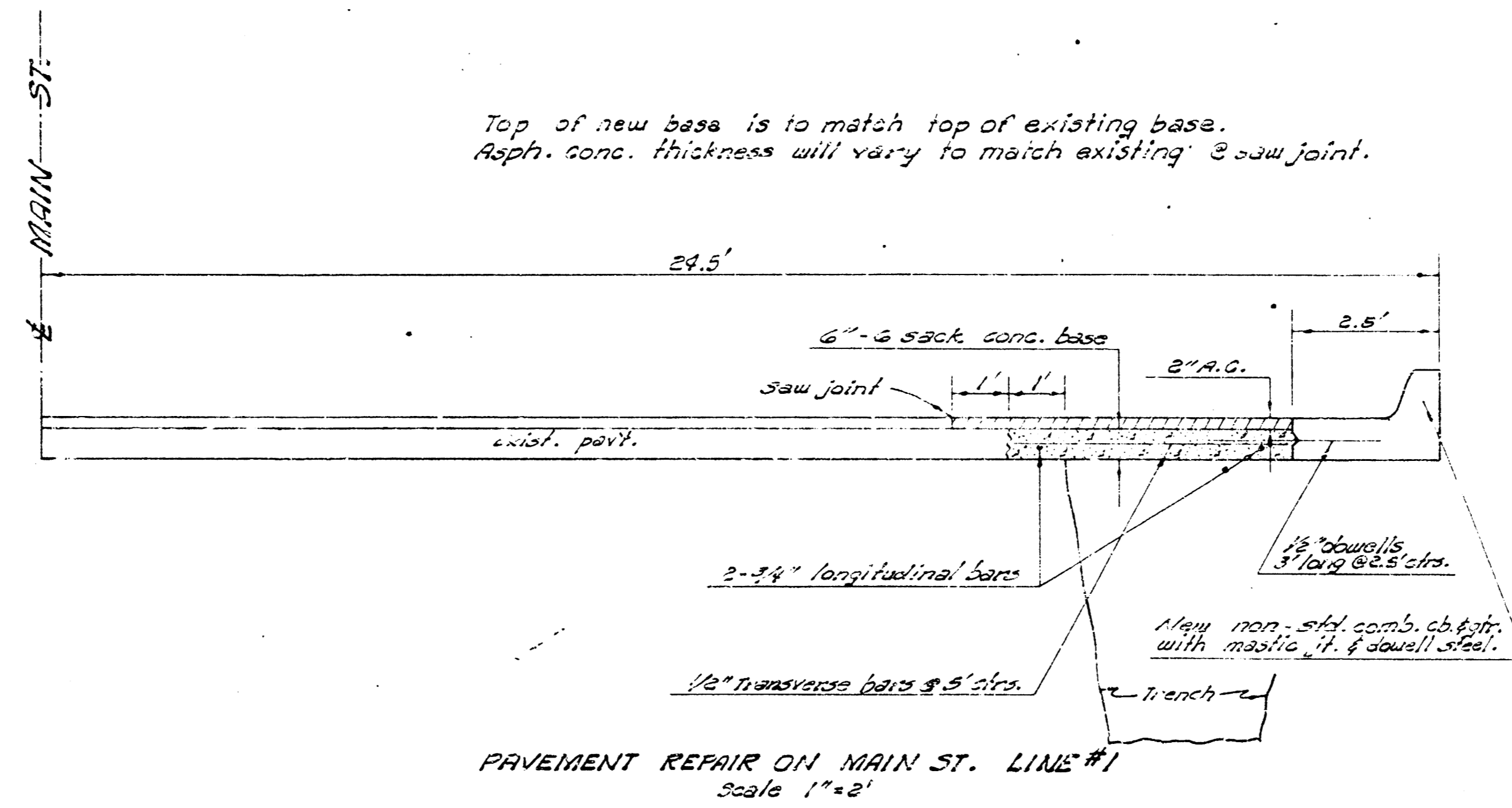
S.W.S. NO. 76
 PROJ. NO. C25-2



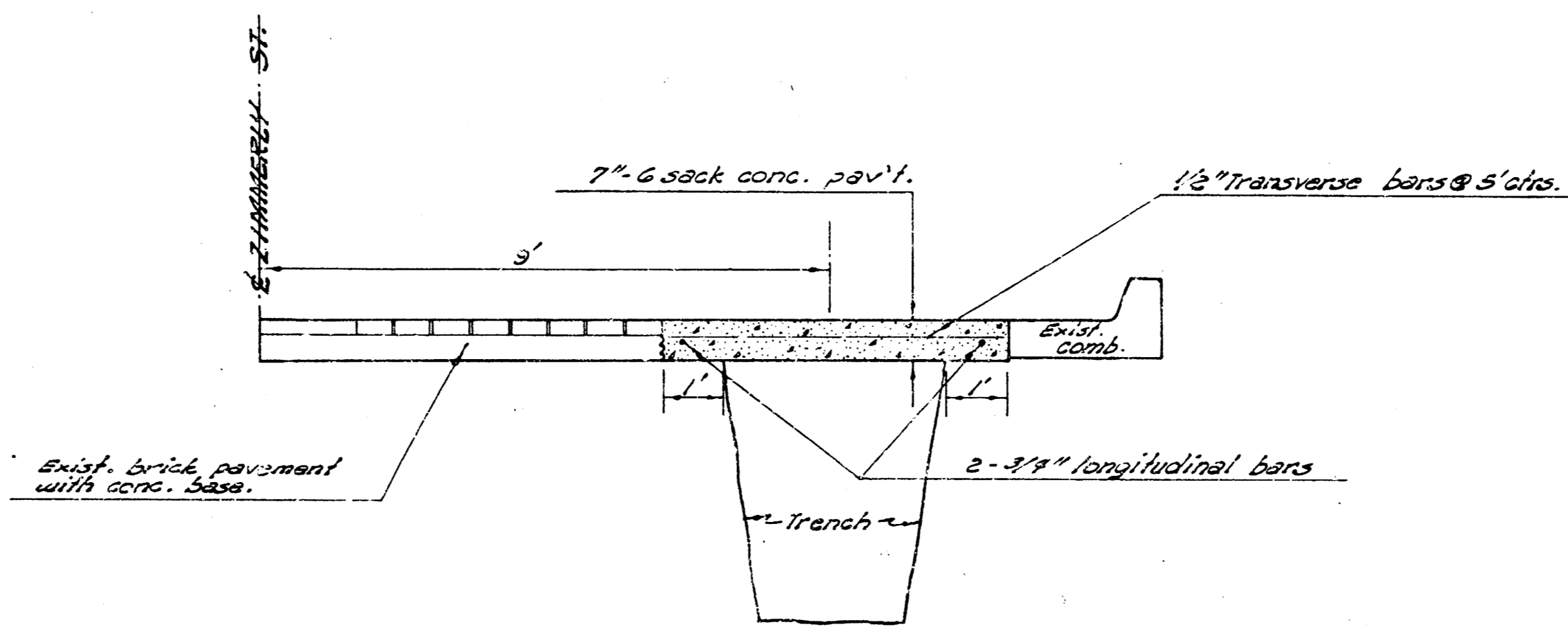
PLAN
REINF. CONC. M.H. STA. 6189 LINE #1
Scale 3/8"=1'-0"



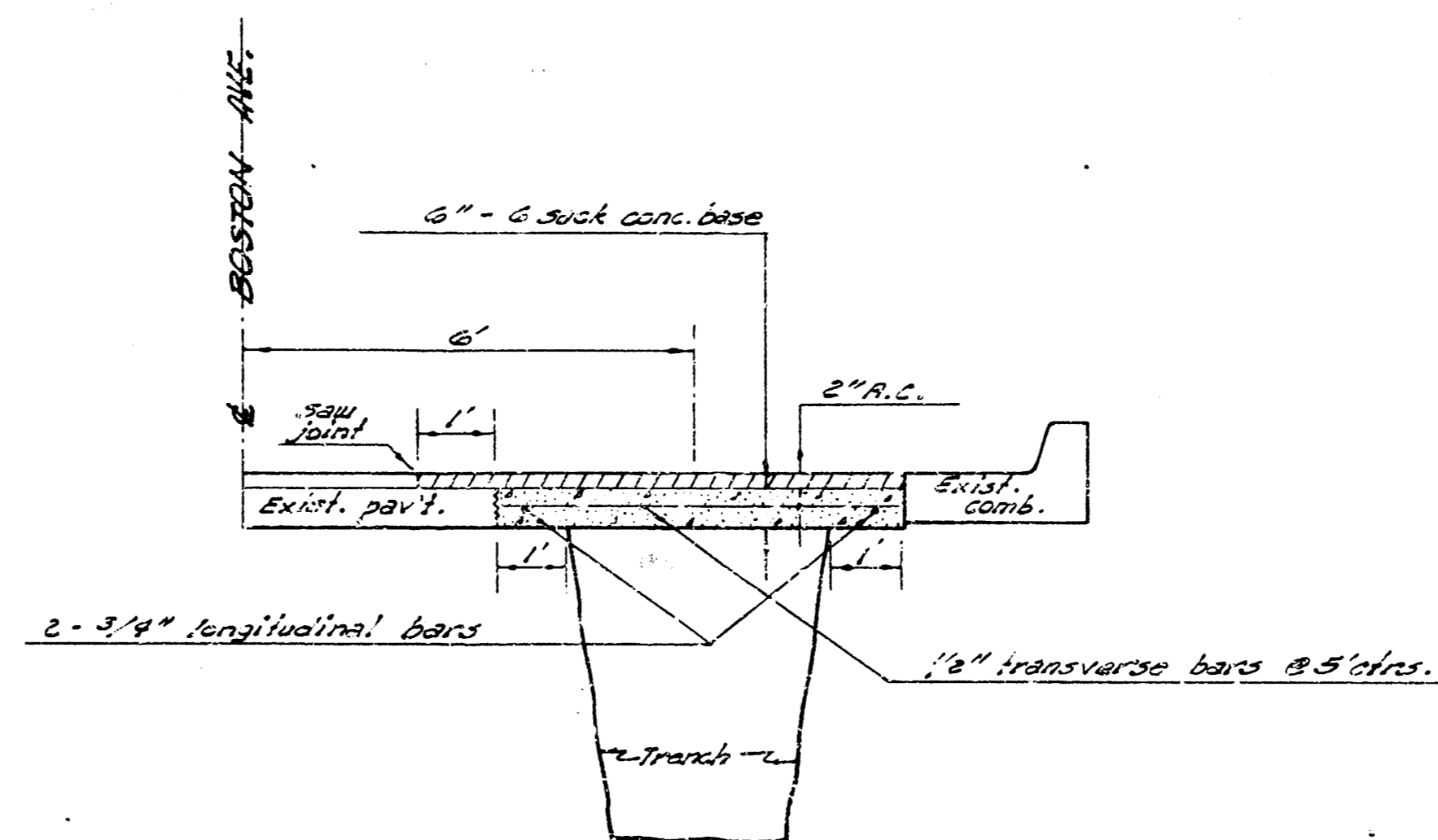
ELEVATION
REINF. CONC. M.H. STA. 6189 LINE #1
Scale 3/8"=1'-0"



PAVEMENT REPAIR ON MAIN ST. LINE #1
Scale 1"=2'



PAVEMENT REPAIR ON ZIMMERLY LINE #2
Scale 1"=2'



PAVEMENT REPAIR ON BOSTON LINE #3
Scale 1"=2'

GENERAL NOTES:

All backfill is to be fluffed and vibrated. Surf or finishing & watering is to be included in the bid price of the pipe. If excavated material is unsuitable for backfill, sand fill will be used. Manholes on Line 1, Line 2, Line 3, and Line 4 are to be 5' dia. inside a base. Bid price of removing manholes & repairs is to include placing of pipe, forming settings and backfilling with sand.