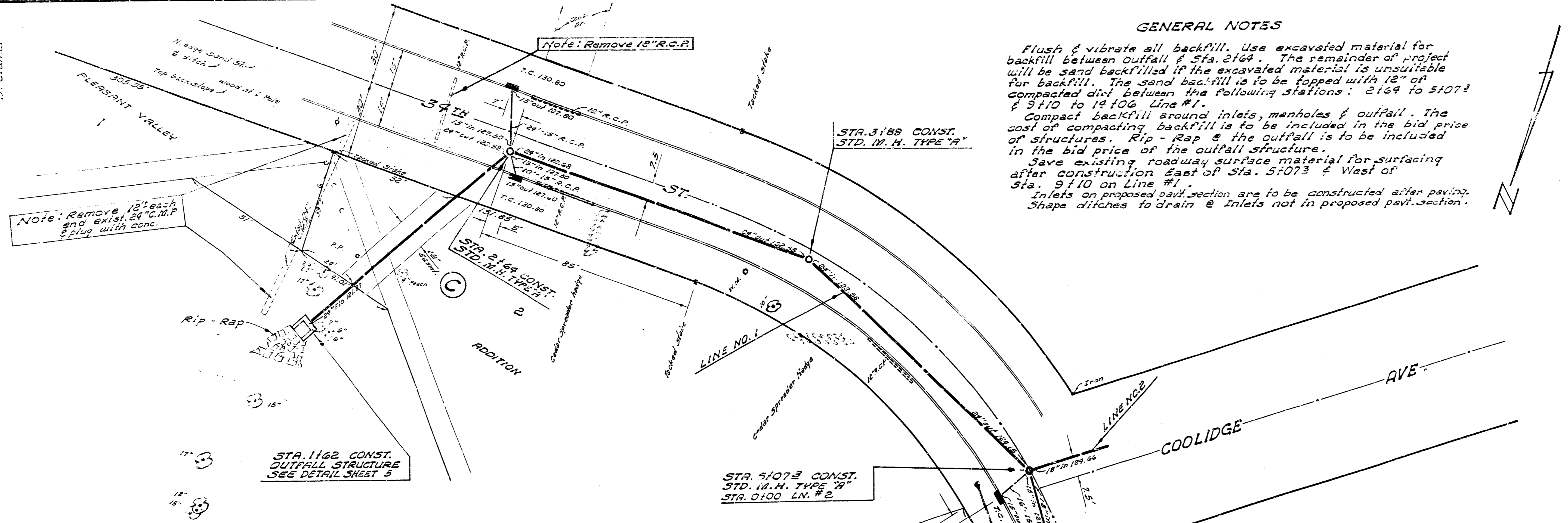


J. Chaney, J. B. K. D. Crumley



GENERAL NOTES

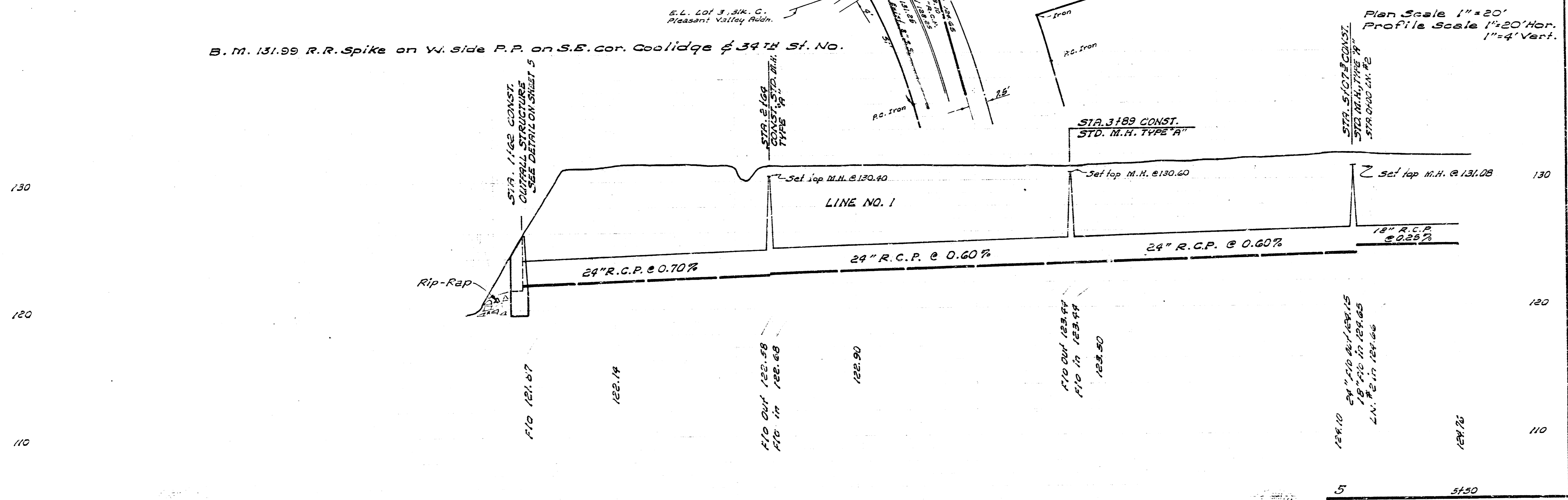
Flush & vibrate all backfill. Use excavated material for backfill between outfall & Sta. 2164. The remainder of project will be sand backfilled if the excavated material is unsuitable for backfill. The sand backfill is to be topped with 12" of compacted dirt between the following stations: 2164 to 5107 & 3110 to 12106 Line #1.

Compact backfill around inlets, manholes & outfall. The cost of compacting backfill is to be included in the bid price of structures. Rip-Rap @ the outfall is to be included in the bid price of the outfall structure.

Save existing roadway surface material for surfacing after construction East of Sta. 5107 & West of Sta. 9110 on Line #1.

Inlets on proposed pavt. section are to be constructed after paving. Shape ditches to drain @ inlets not in proposed pavt. section.

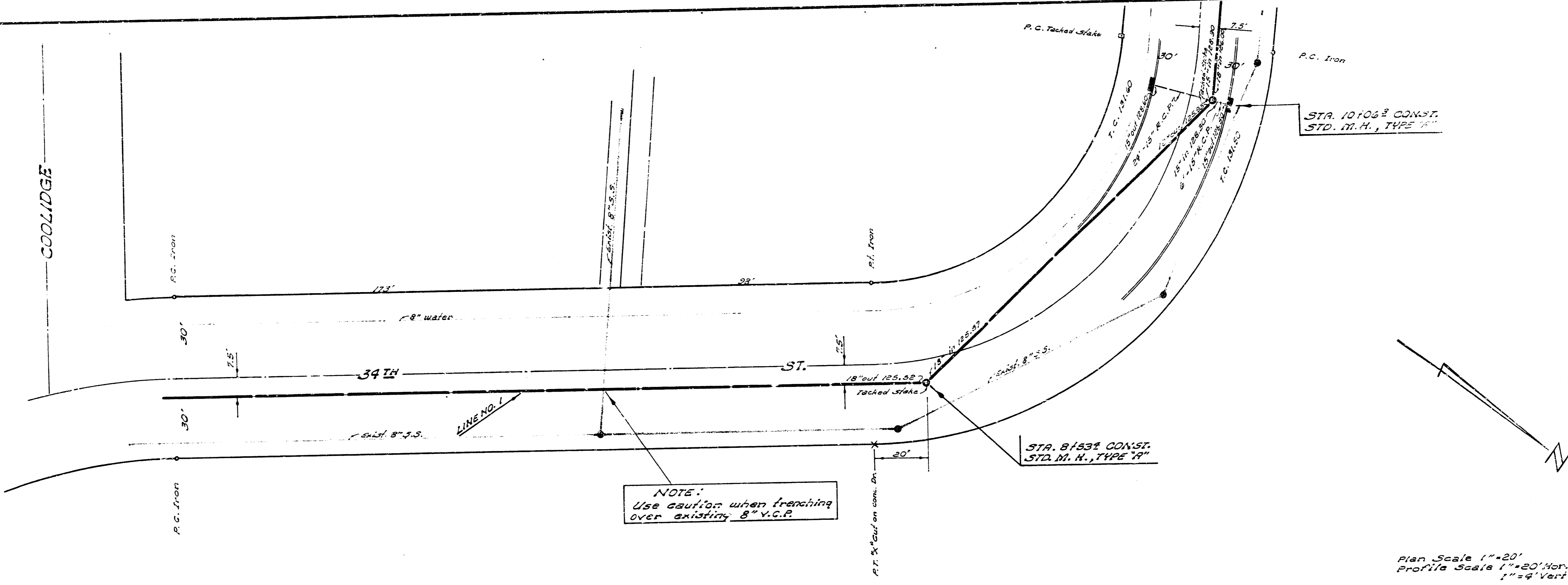
B. M. 131.99 R.R. Spike on W. Side P.P. on S.E. cor. Coolidge & 34th St. No.



S. W. S. NO. 78
 CITY OF WICHITA, KANSAS
 B. E. SMITH, CITY ENGINEER
 PROJ. NO. 626-19
 DATE: OCT. 1966

1/5

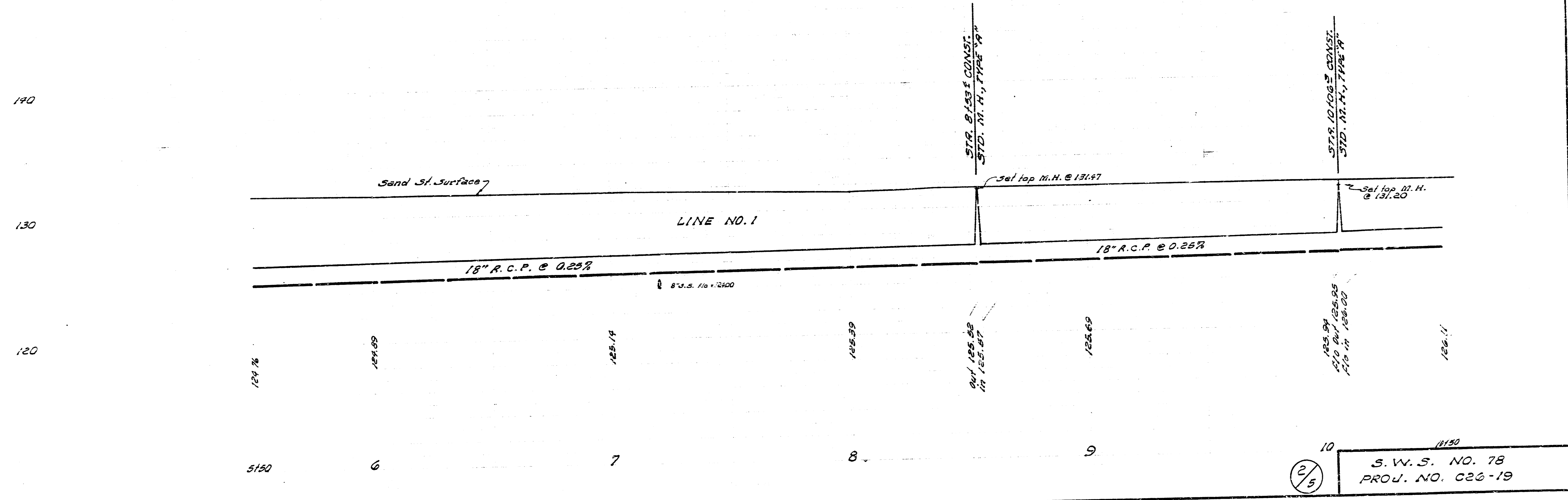
4.18.193



NOTE:
Use caution when trenching
over existing 8" V.C.R.

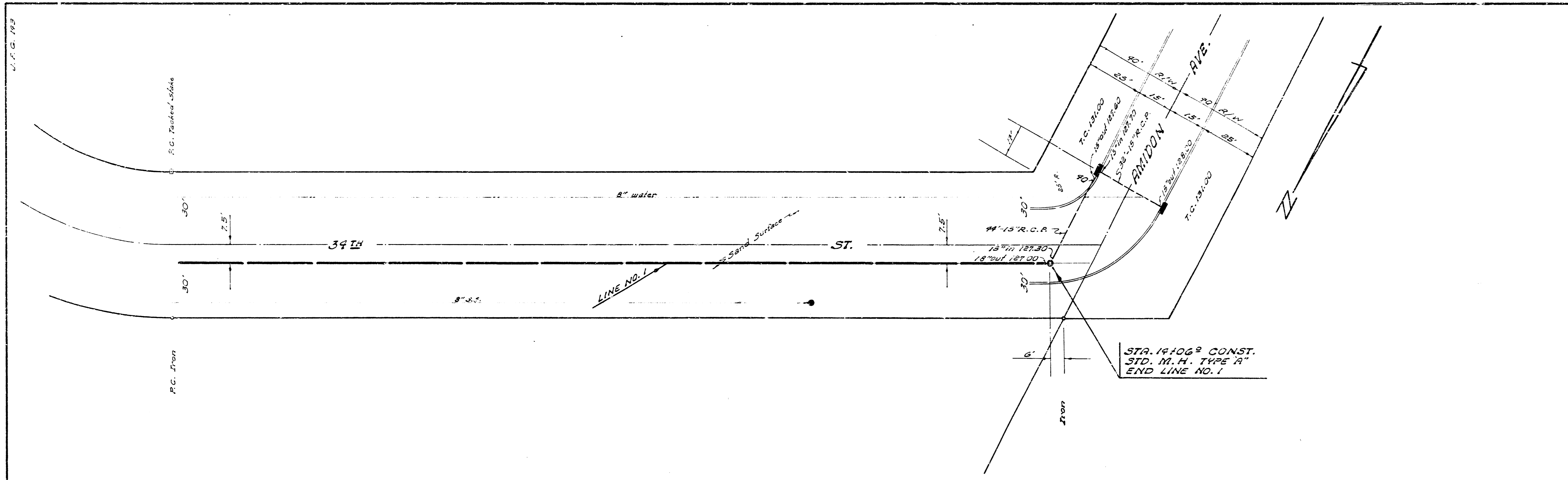
Plan Scale 1"=20'
Profile Scale 1"=20' Hor.
1"=4' Vert.

B.M. 133.92 N.E. Cor. conc. porch Ho. # 1701 N. 34th St.



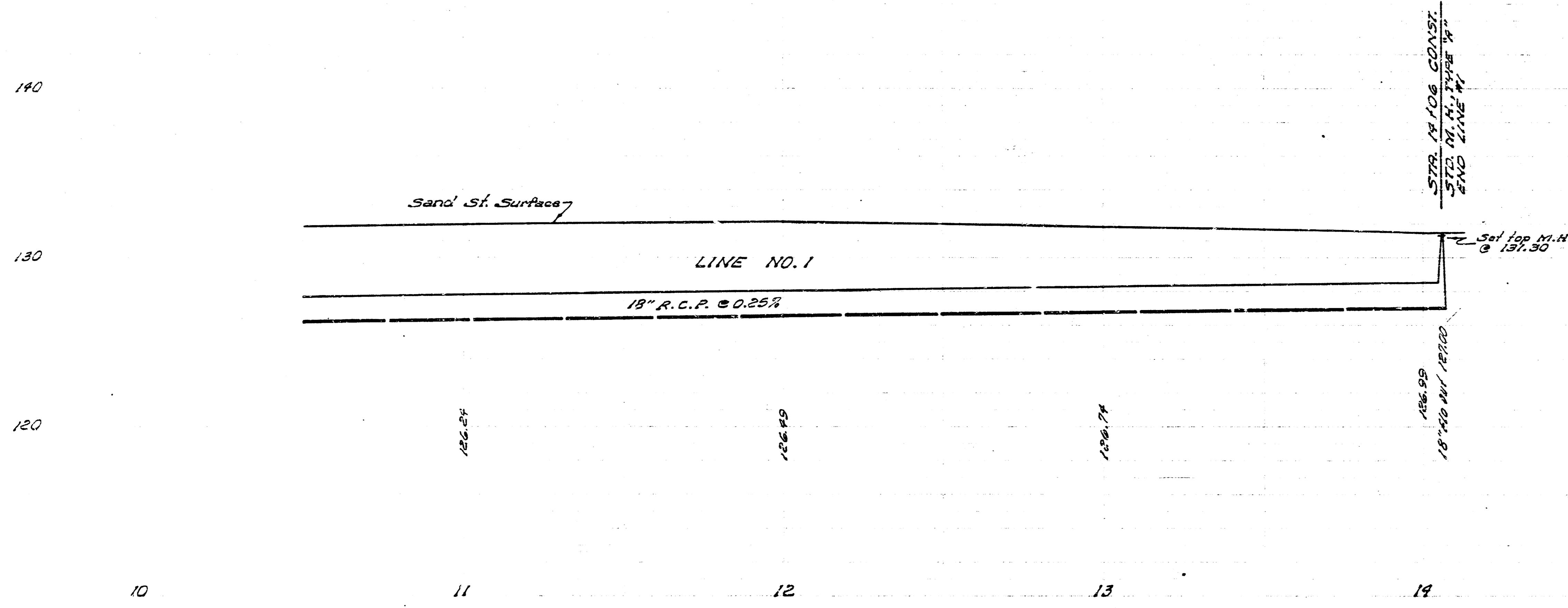
2/5

S.W.S. NO. 78
PROJ. NO. 026-19



B. M. 131.36 City Standard on N.E. cor. Amidon & 33rd St. N.

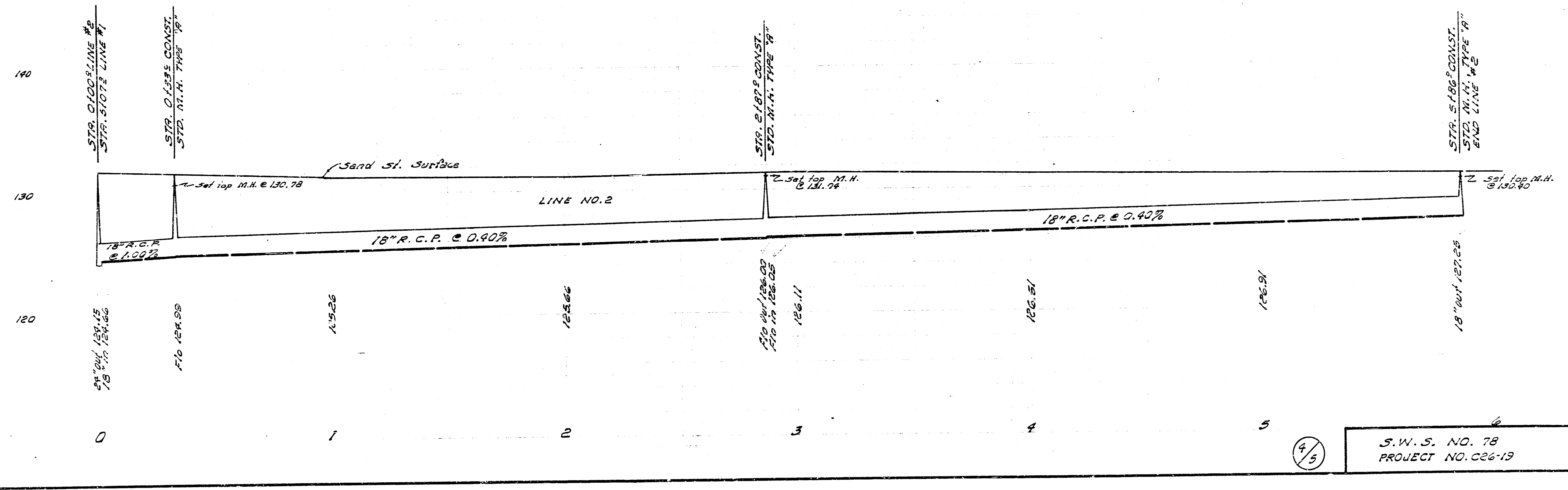
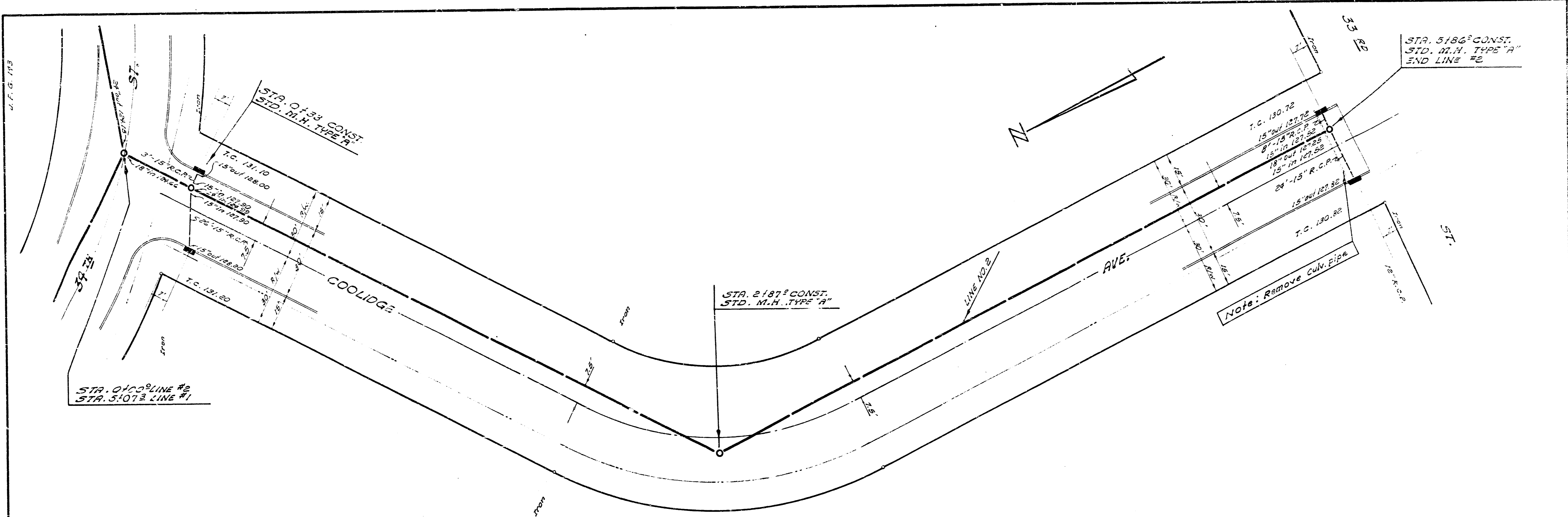
Plan Scale 1"=20'
Profile Scale 1"=20' Hor.
1"=4' Vert.



3/5

S. W. S. NO. 78
PROJ. NO. C26-19

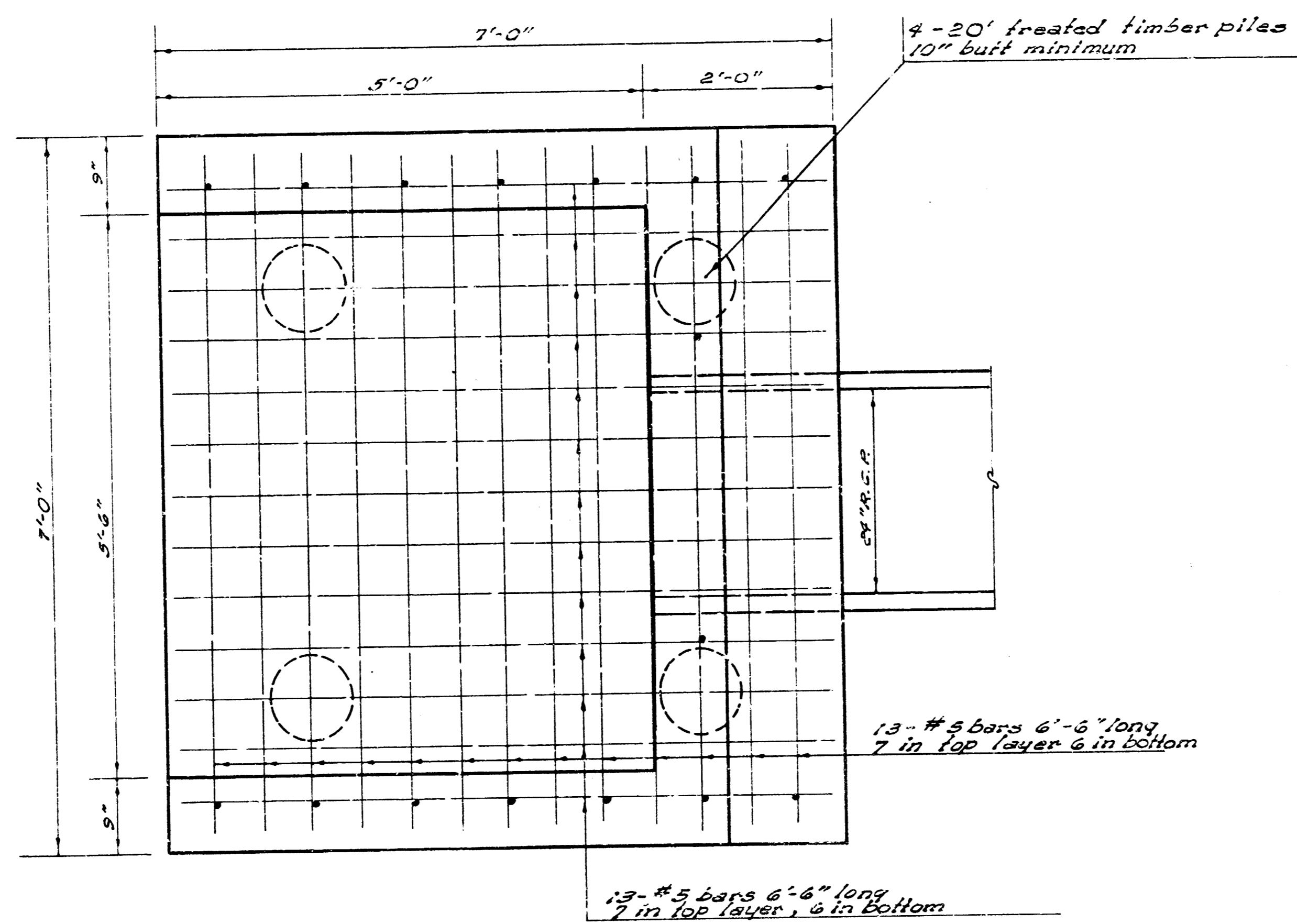
V.F.G. 113



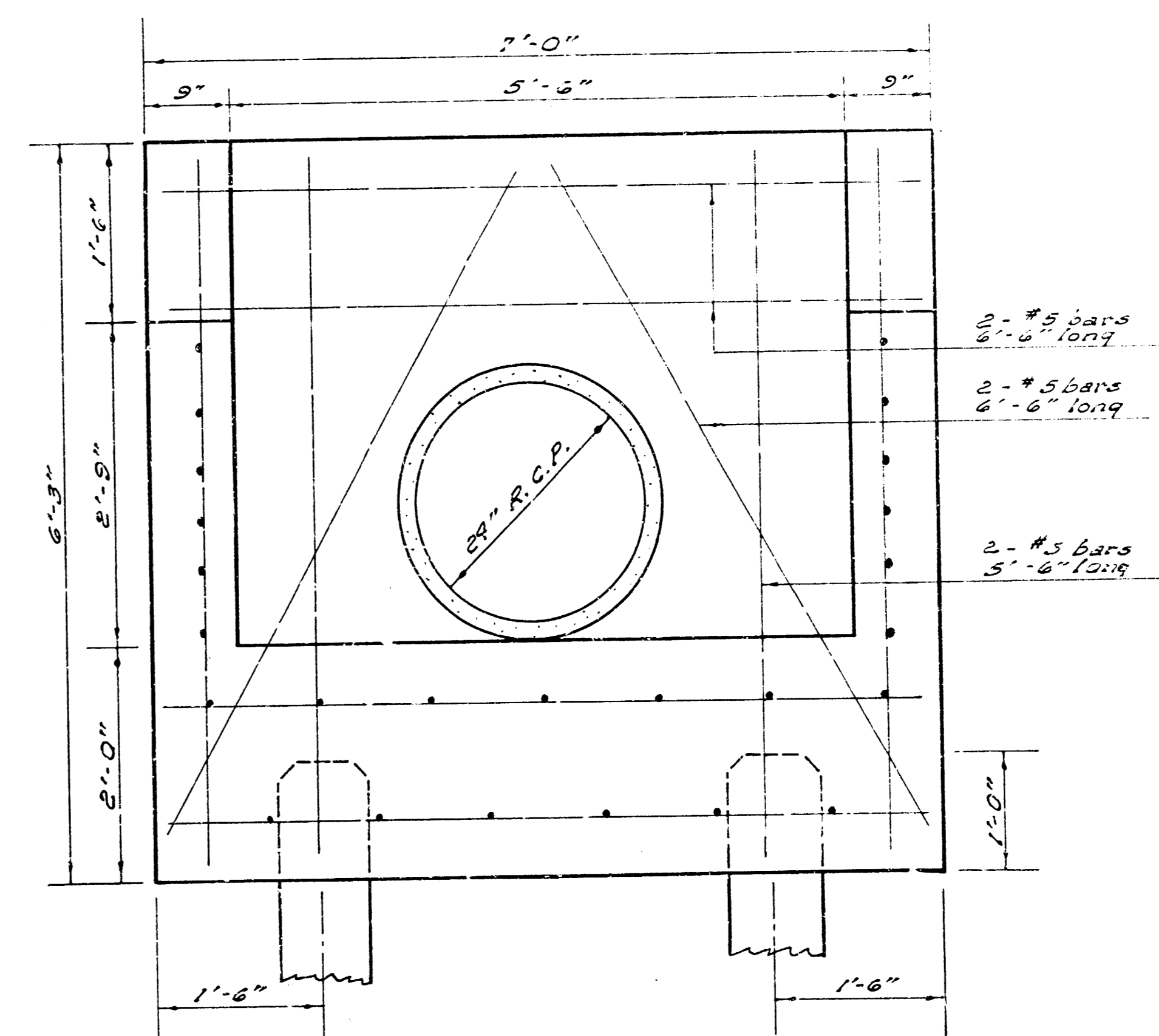
4/5

S.W.S. NO. 78
PROJECT NO. C26-19

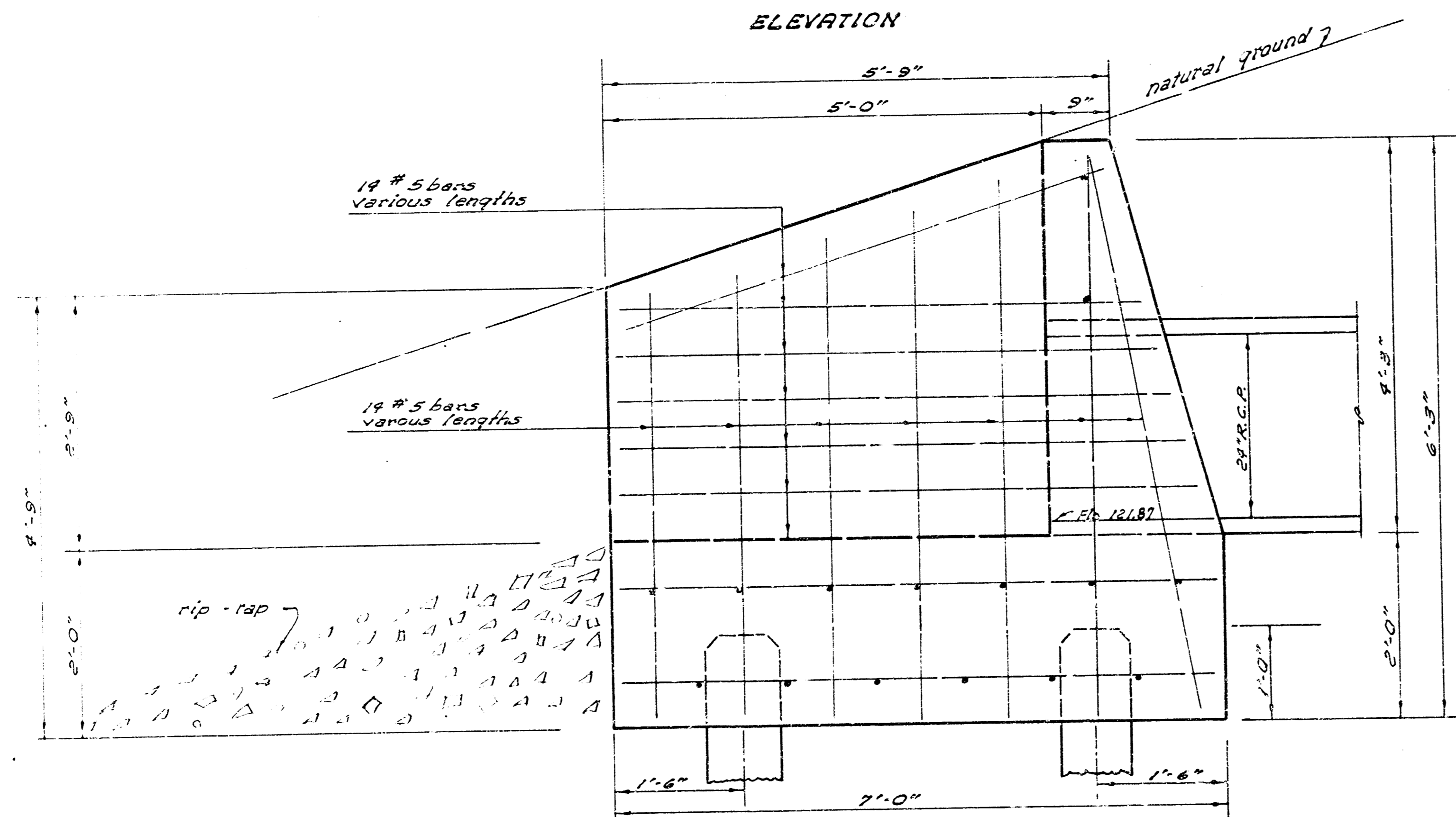
PLAN
OUTFALL STA. 1162 LINE NO. 1
Scale 1" = 1'-0"



ELEVATION



ELEVATION



- LIST OF MATERIALS
- 6.0 Cu. Yds. (City & sack pave. mix)
 - 396 lbs. reinf. steel
 - 4 - 20' treated timber piles, 10" butt min.

5/15 S. W. S. NO. 78
PROJ. NO. C26-19