

SCALE 1"=150'

STORM WATER SEWER NO. 82

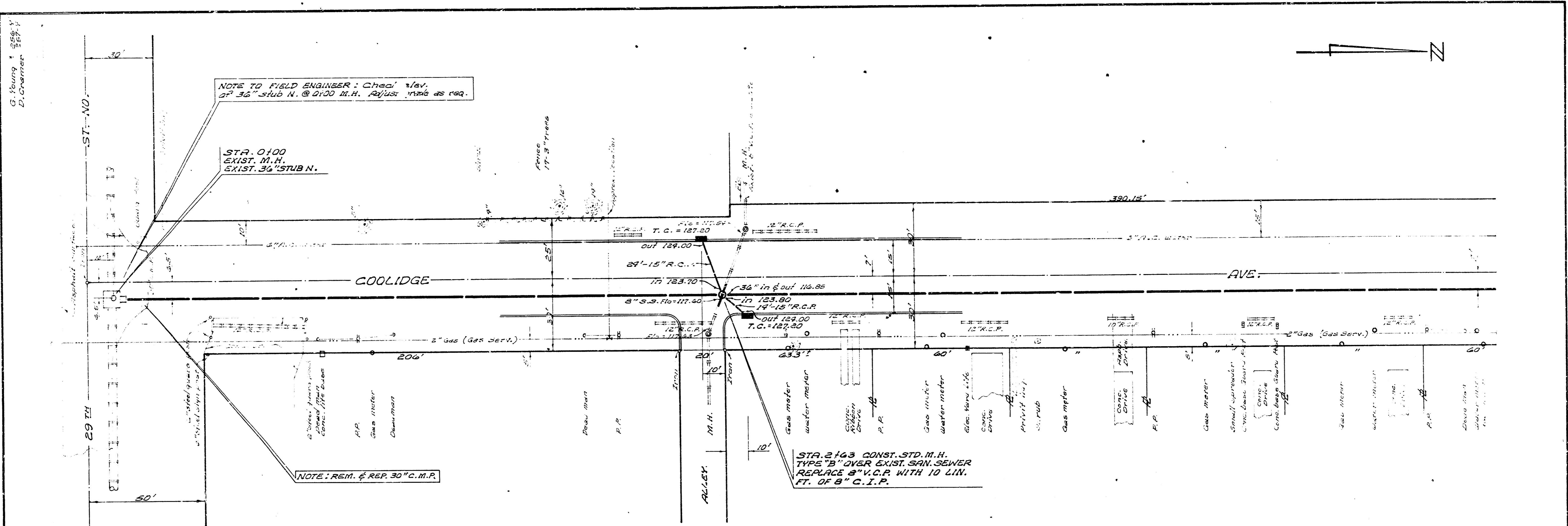
CITY OF WICHITA, KANSAS - B.E. SMITH, CITY ENGINEER

PROJECT NO. C27-66

DATE:

1/7

G. Young
D. Chamer

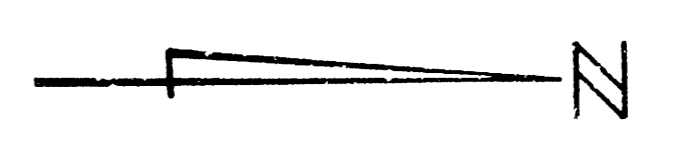


NOTE TO FIELD ENGINEER: Check elev. of 36" stub N. @ 0100 M.H. Adjust grade as req.

STA. 0100
EXIST. M.H.
EXIST. 36" STUB N.

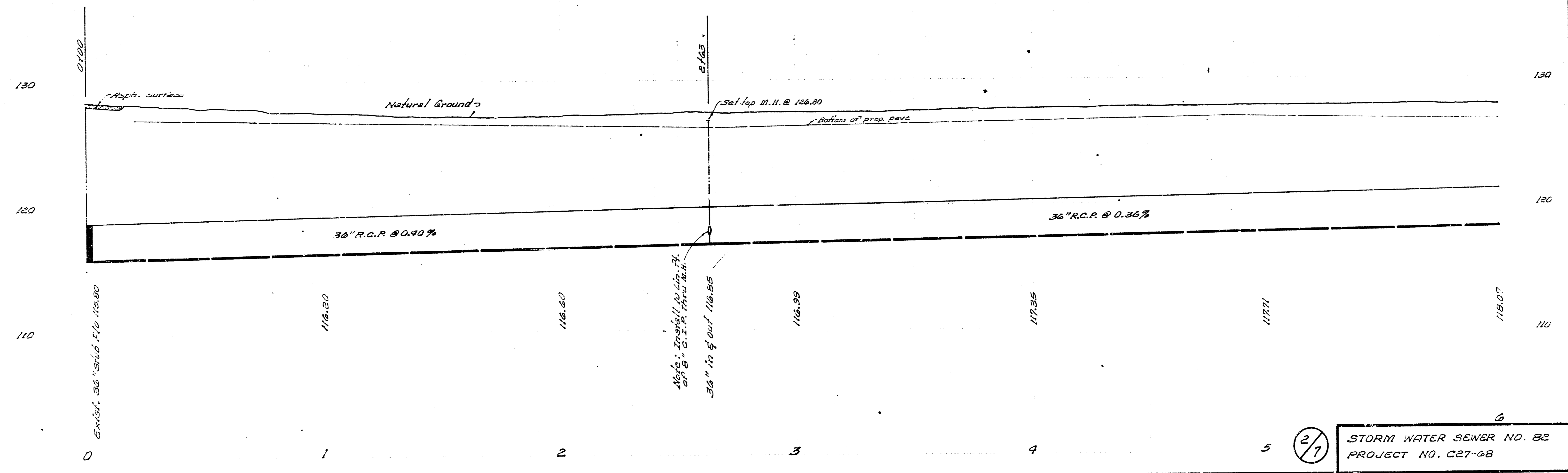
NOTE: REM. & REP. 30" C.I.P.

STA. 2163 CONST. STD. M.H.
TYPE "B" OVER EXIST. SAN. SEWER
REPLACE 8" V.C.P. WITH 10 LIN.
FT. OF 8" C.I.P.



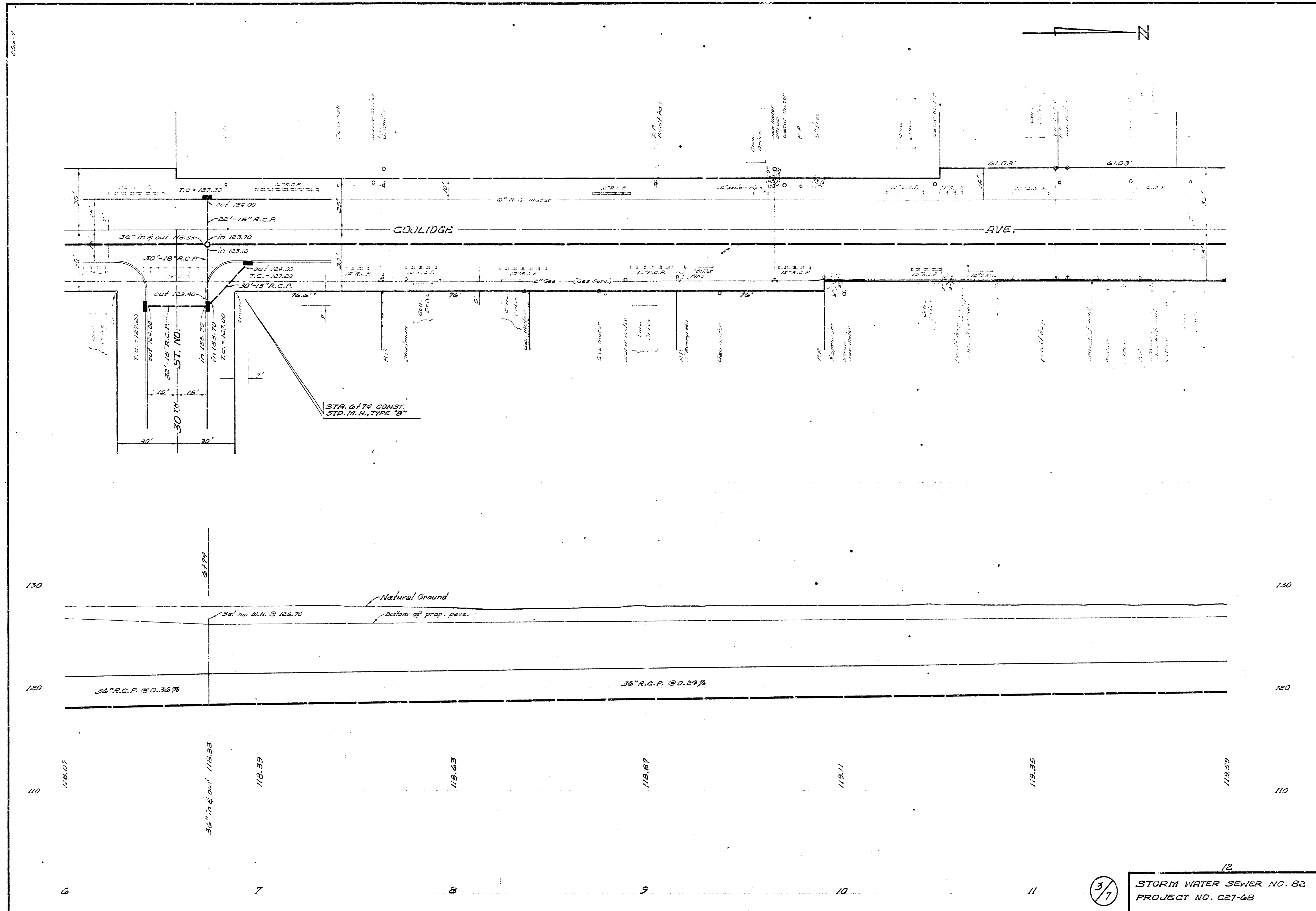
Plan Scale 1"=20'
Profile Scale 1"=20' Hor.
1"=4' Vert.

B.M. 128.65 Top N.W. bolt in base U-Haul Rental sign 90' E. of Coolidge 50' N. of 29th



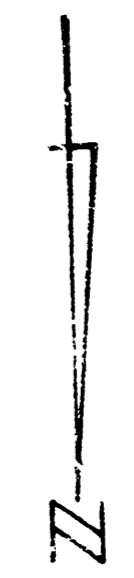
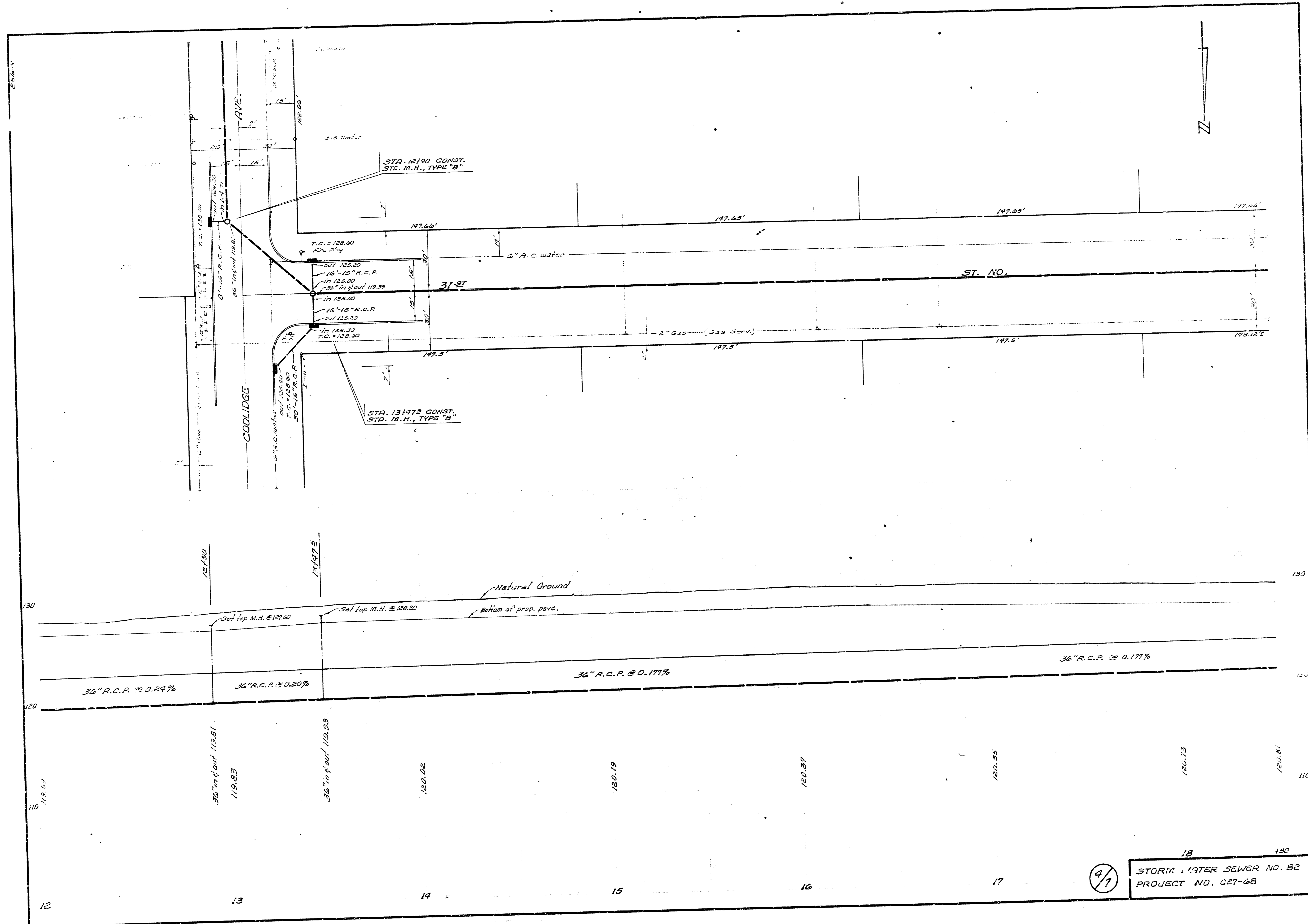
2/1

STORM WATER SEWER NO. 82
PROJECT NO. C27-68



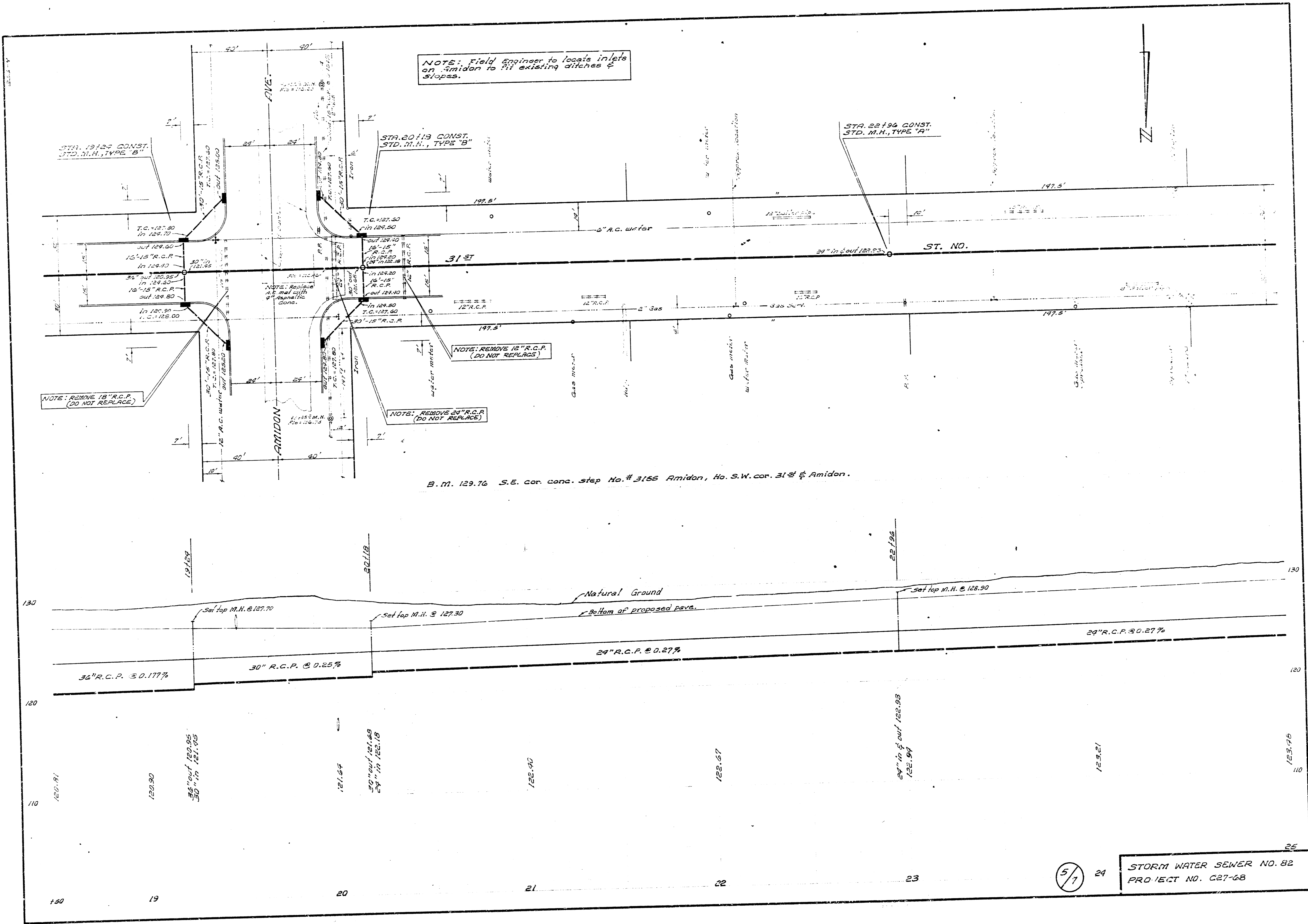
3/7

12
 STORM WATER SEWER NO. 82
 PROJECT NO. C27-68



4/7

18 +50
 STORM WATER SEWER NO. 82
 PROJECT NO. C27-68



NOTE: Field Engineer to locate inlets on Amidon to fit existing ditches & slopes.

STA. 19124 CONST. STD. M.H., TYPE "B"

STA. 20113 CONST. STD. M.H., TYPE "B"

STA. 22196 CONST. STD. M.H., TYPE "A"

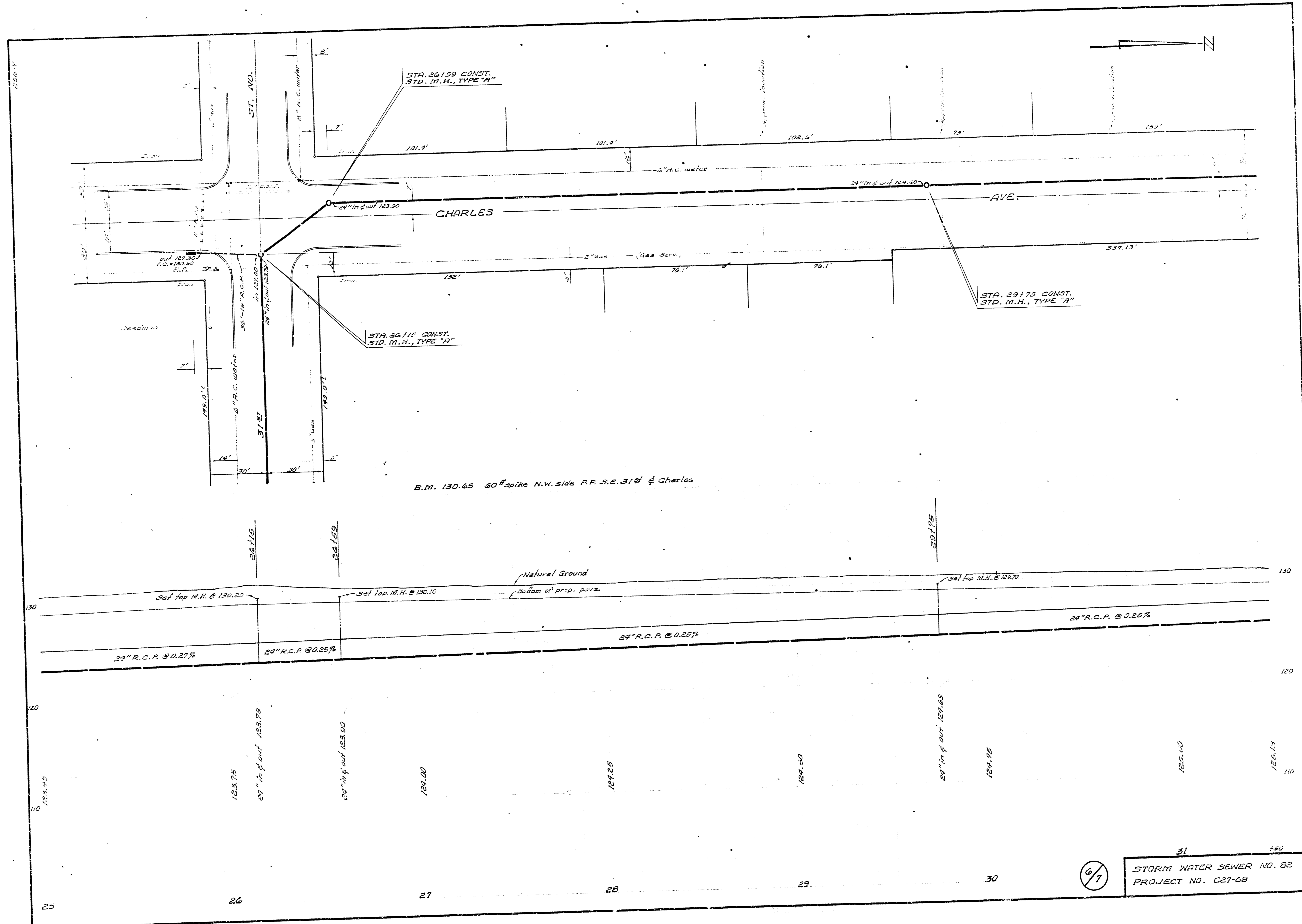
NOTE: REMOVE 18" R.C.P. (DO NOT REPLACE)

NOTE: REMOVE 12" R.C.P. (DO NOT REPLACE)

NOTE: REMOVE 24" R.C.P. (DO NOT REPLACE)

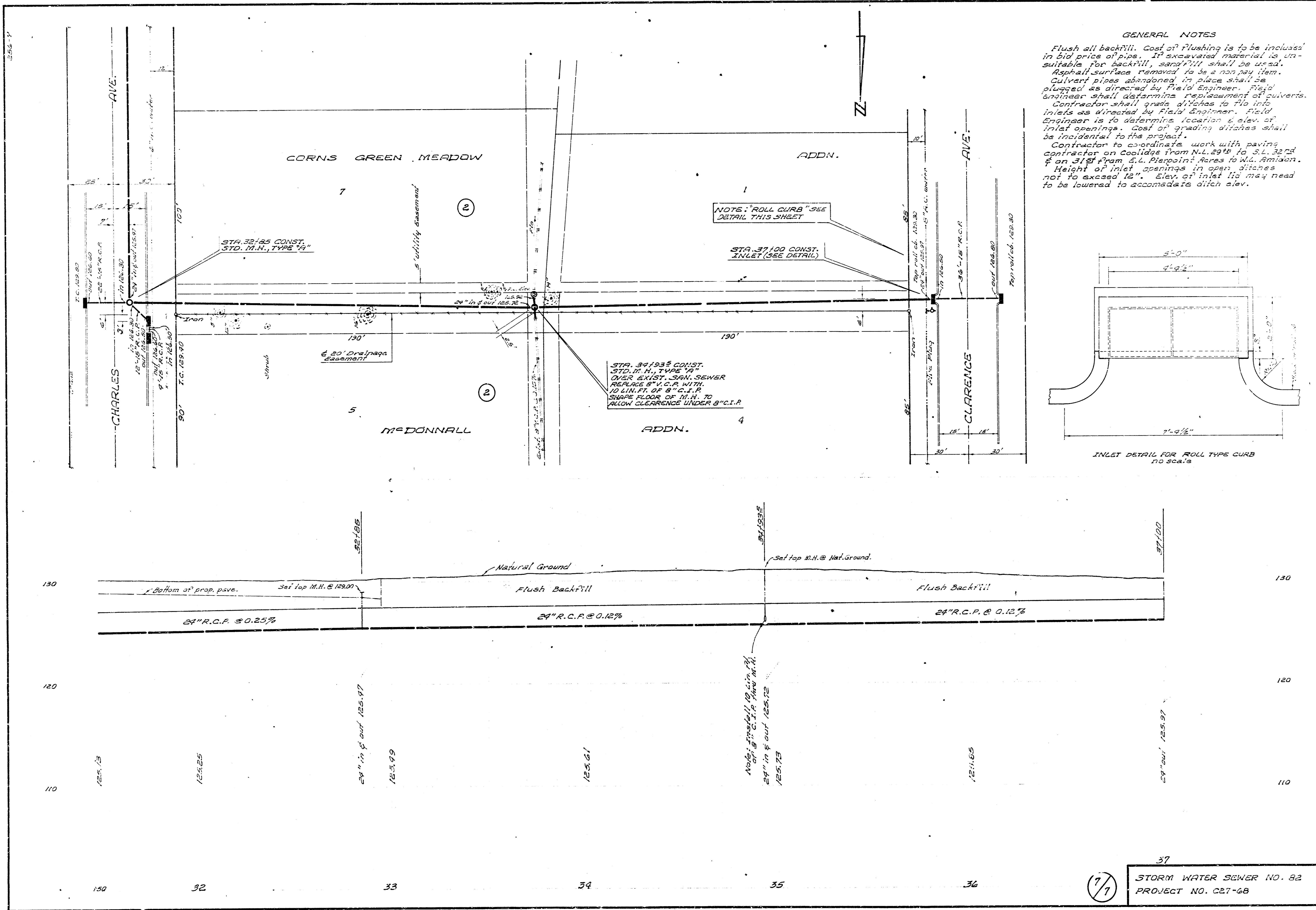
B.M. 129.76 S.E. cor. conc. step No. # 3155 Amidon, Ho. S.W. cor. 31st & Amidon.

5/7 24 STORM WATER SEWER NO. 82 PROJECT NO. C27-68



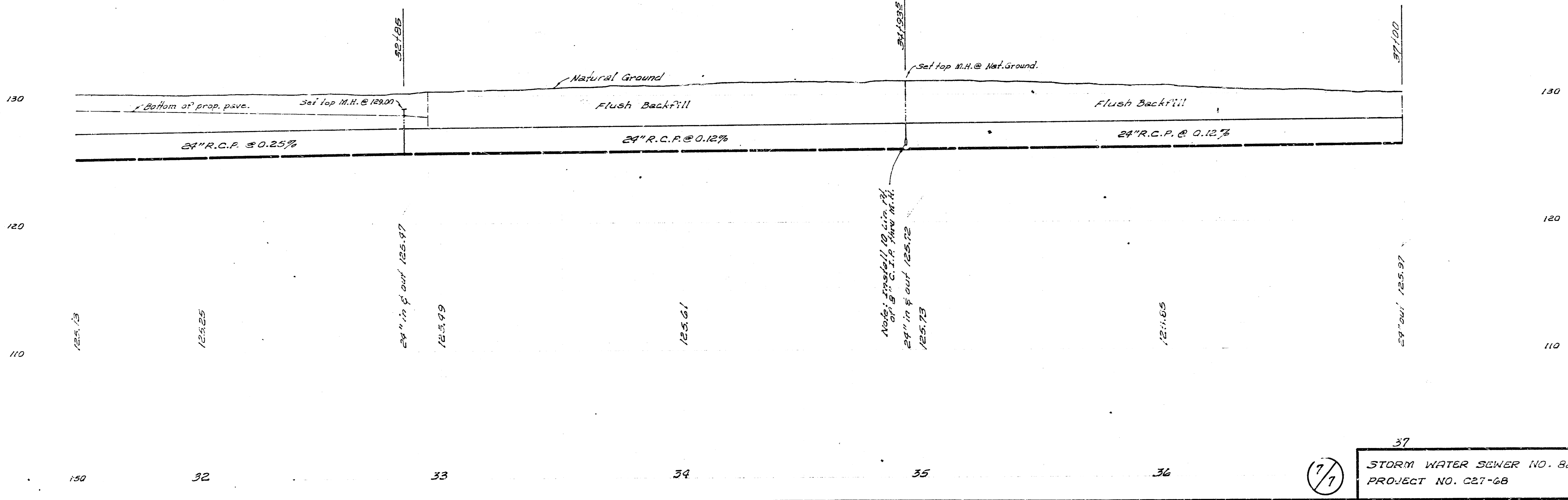
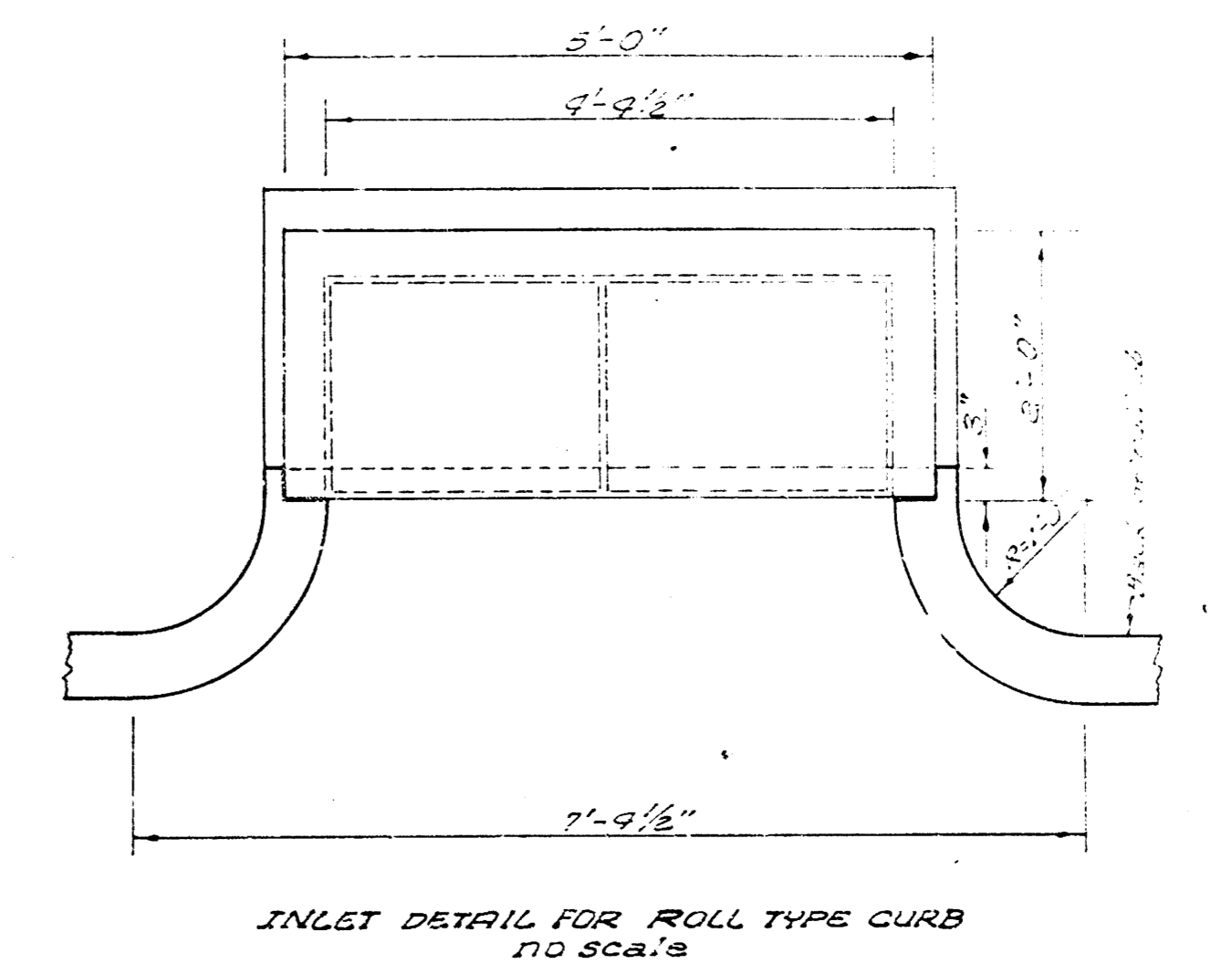
6/7

31
 STORM WATER SEWER NO. 82
 PROJECT NO. C21-68



GENERAL NOTES

Flush all backfill. Cost of flushing is to be included in bid price of pipe. If excavated material is unsuitable for backfill, sandfill shall be used. Asphalt surface removed to be a non pay item. Culvert pipes abandoned in place shall be plugged as directed by Field Engineer. Field Engineer shall determine responsibility of culverts. Contractor shall grade ditches to flow into inlets as directed by Field Engineer. Field Engineer is to determine location, elev. of inlet openings. Cost of grading ditches shall be incidental to the project. Contractor to coordinate work with paving contractor on Coolidge from N.L. 29th to S.L. 32nd & on 31st from E.L. Pierpoint Acres to W.L. Armitage. Height of inlet openings in open ditches not to exceed 12". Elev. of inlet lid may need to be lowered to accommodate ditch elev.



37
 STORM WATER SEWER NO. 82
 PROJECT NO. C27-68