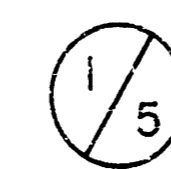


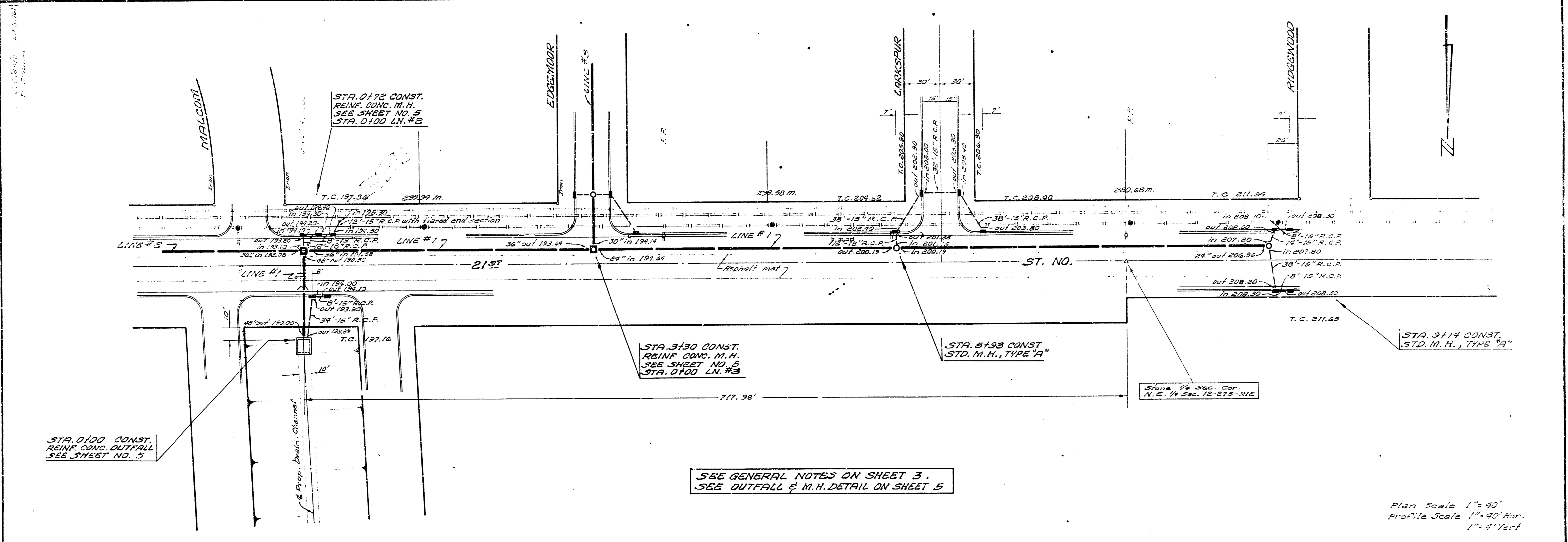
STORM WATER SEWER NO. 85

CITY OF WICHITA, KANSAS - B. E. SMITH, CITY ENGINEER

PROJECT NO. C28-11

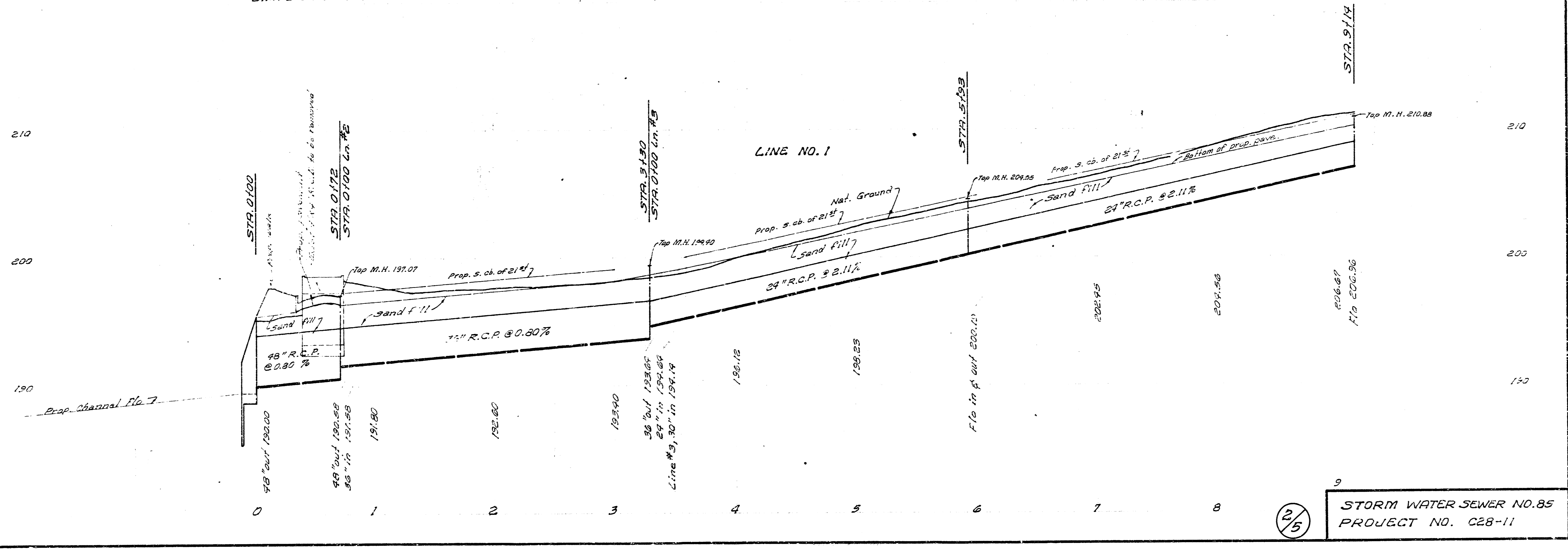
DATE: JULY 1968





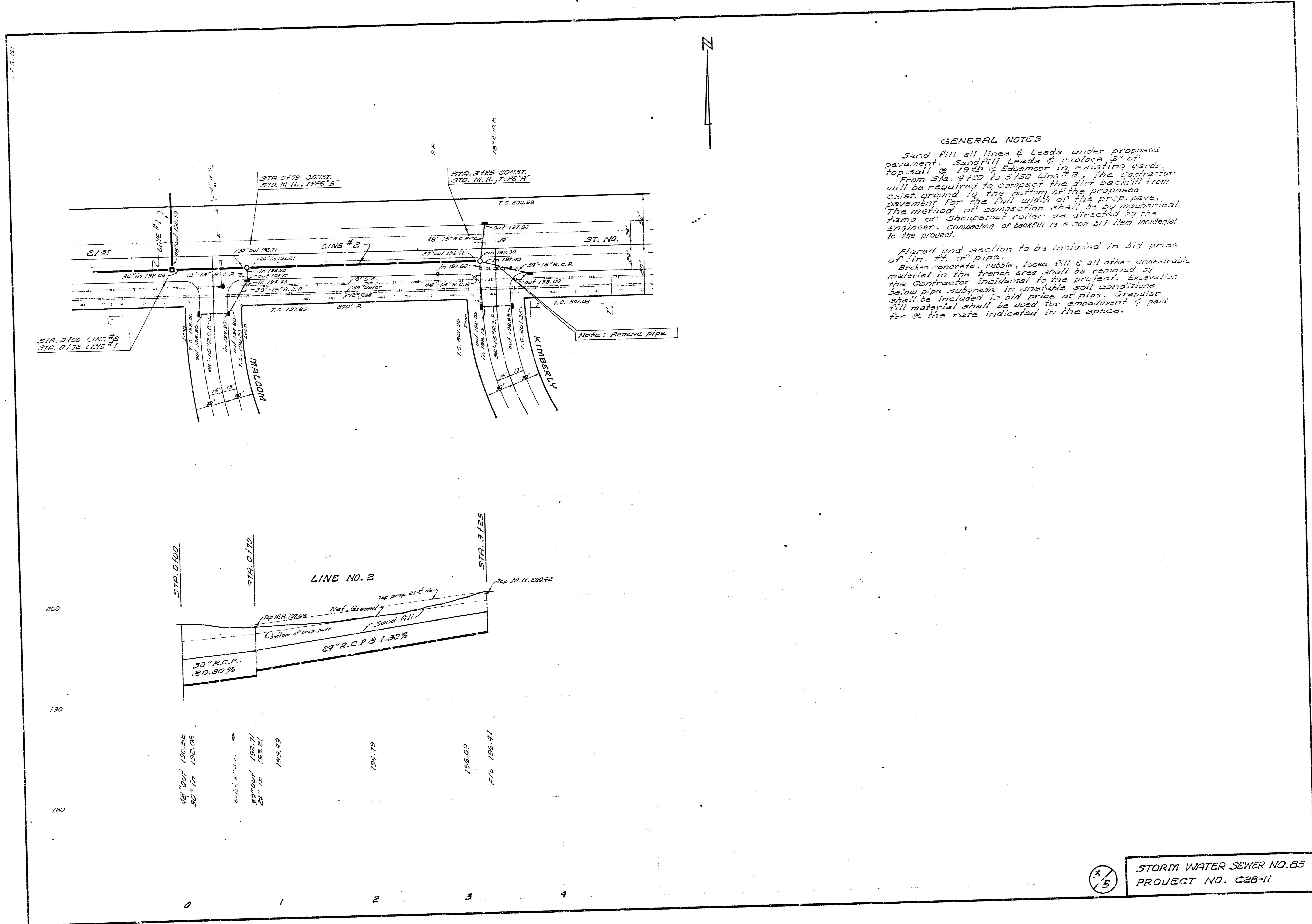
B.M. "D" cut N. End W. headwall of entrance culvert N.S. 214' & 200' W. of Edgemoor

Plan Scale 1"=40'
Profile Scale 1"=40' Hor.
1"=4' Vert.



25

STORM WATER SEWER NO. 85
PROJECT NO. C28-11



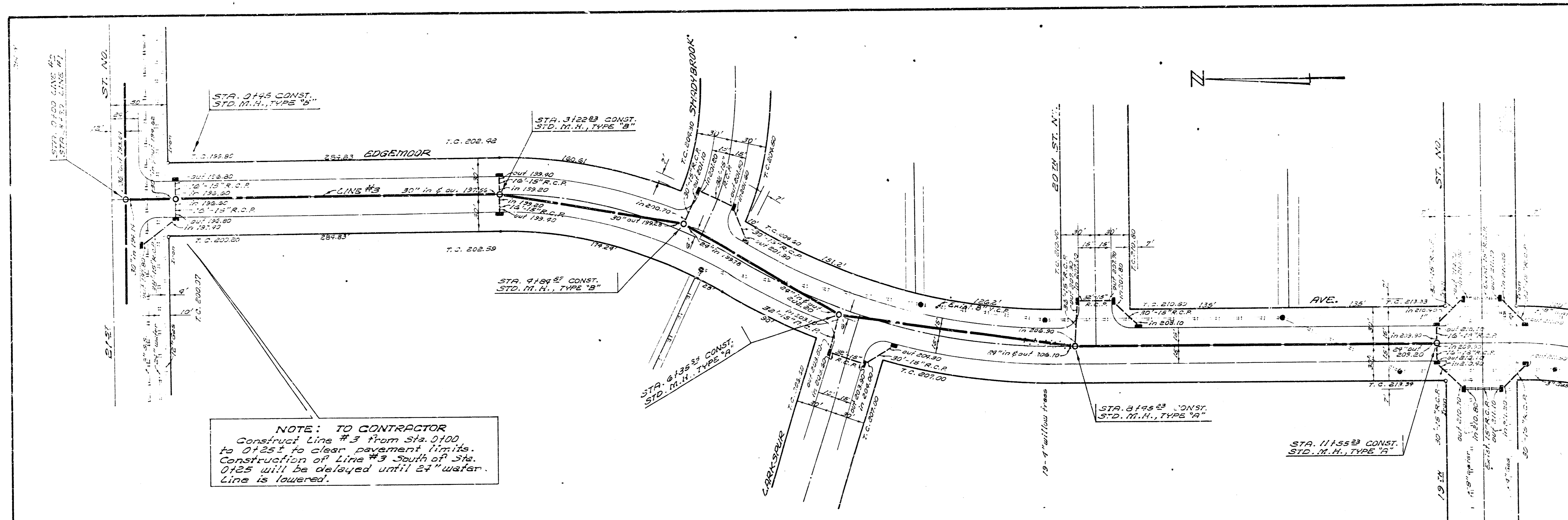
GENERAL NOTES

Sand fill all lines & Leads under proposed pavement. Sandfill Leads & replace 6" of top soil @ 19th & Edgemoor in existing yards. From Sta. 9+00 to 3+50 Line # 2, the contractor will be required to compact the dirt backfill from exist. ground to the bottom of the proposed pavement for the full width of the prop. pave. The method of compaction shall be by mechanical tamers or Sheepsfoot roller as directed by the Engineer. Composition of backfill is a non-bid item incidental to the project.

Flared end section to be included in bid price of lin. ft. of pipe. Broken concrete, rubble, loose fill & all other undesirable material in the trench area shall be removed by the Contractor incidental to the project. Excavation below pipe subgrade in unstable soil conditions shall be included in bid price of pipe. Granular fill material shall be used for embedment & paid for @ the rate indicated in the specs.

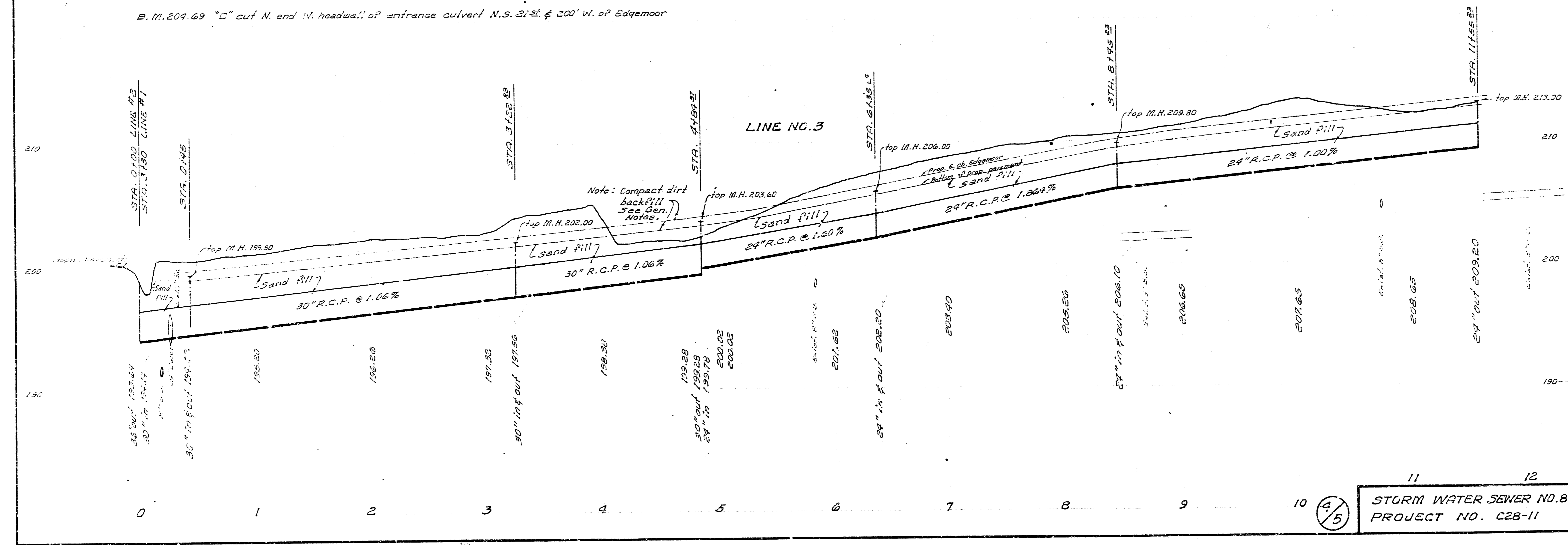
3/5

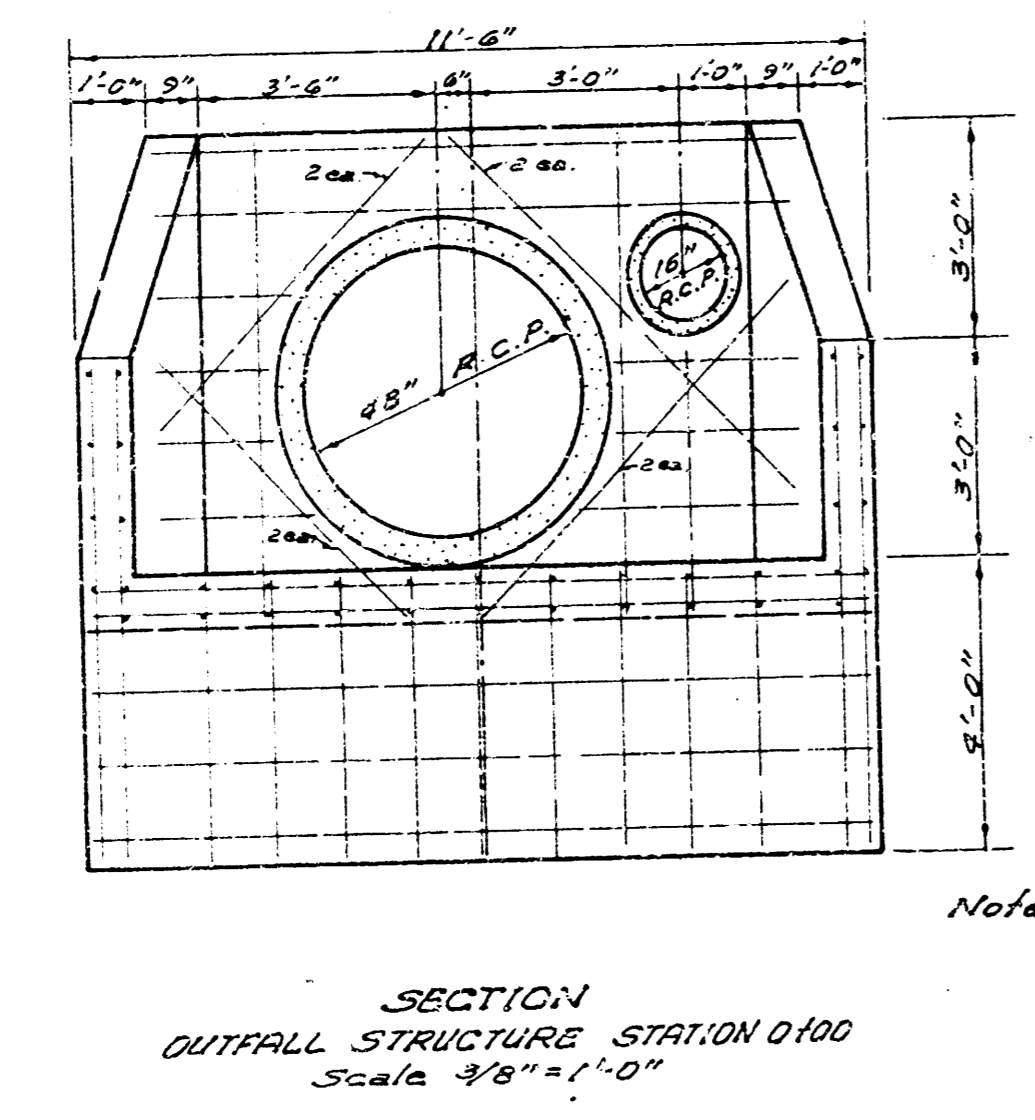
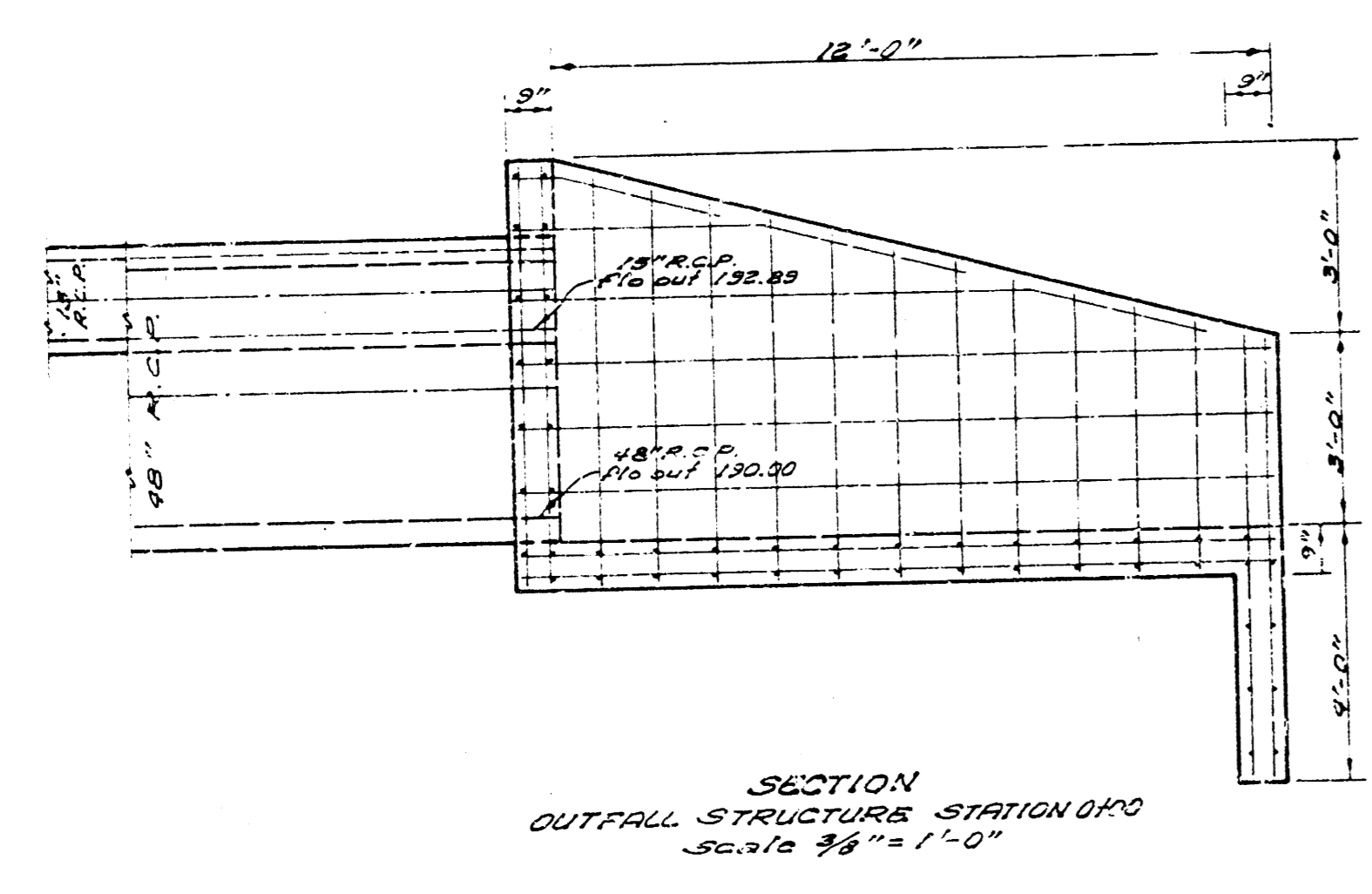
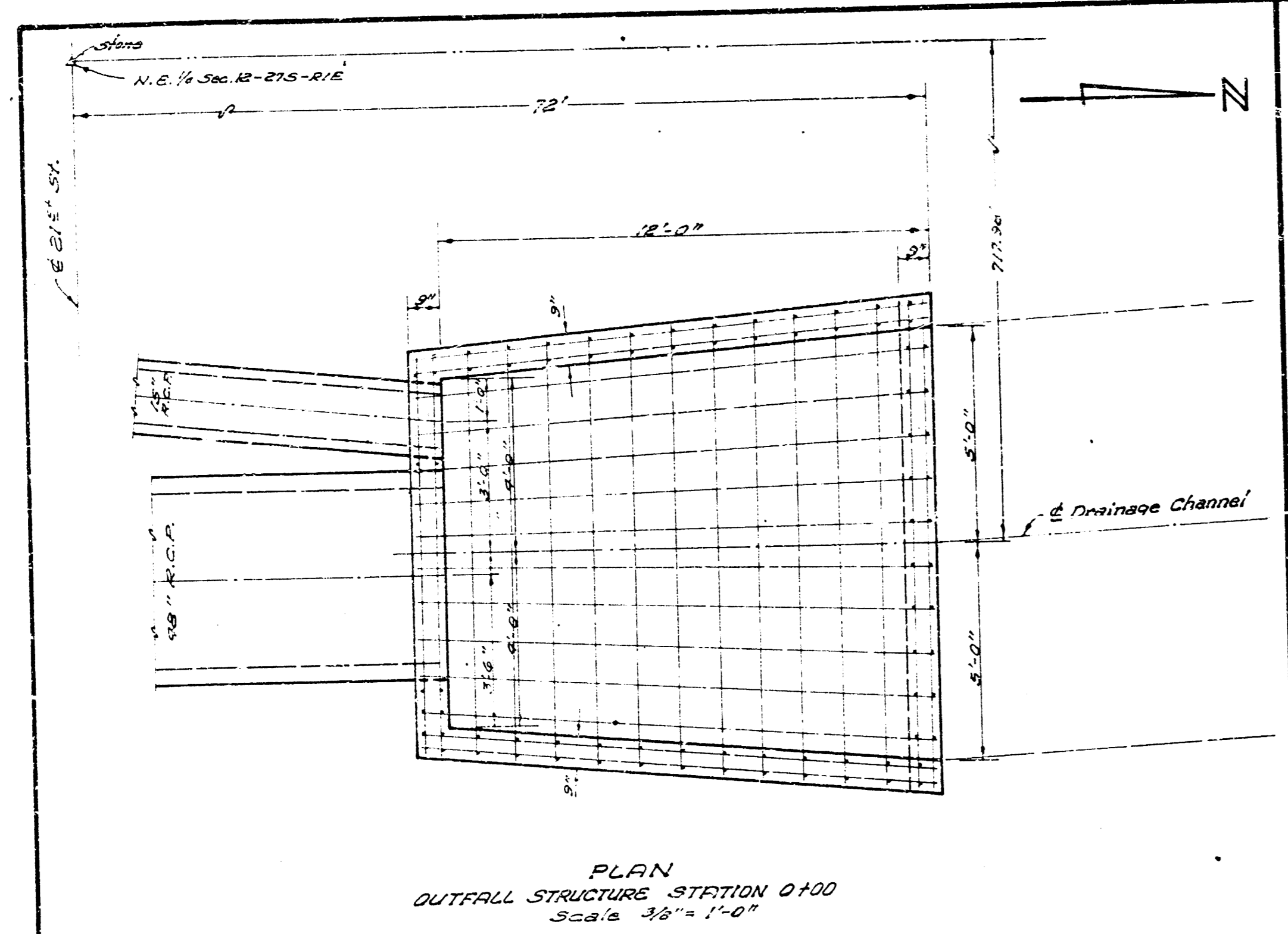
STORM WATER SEWER NO. 85
PROJECT NO. C28-11



NOTE: TO CONTRACTOR
 Construct Line #3 from Sta. 0100 to 0125 to clear pavement utility. Construction of Line #3 south of Sta. 0125 will be delayed until 24" water line is lowered.

B.M. 209.69 "D" cut N. and N. heads of entrance culvert N.S. 21st & 200' W. of Edgemoor





Note: All steel to be #5 bars
@ 12" o.c. (extra bars as shown)

