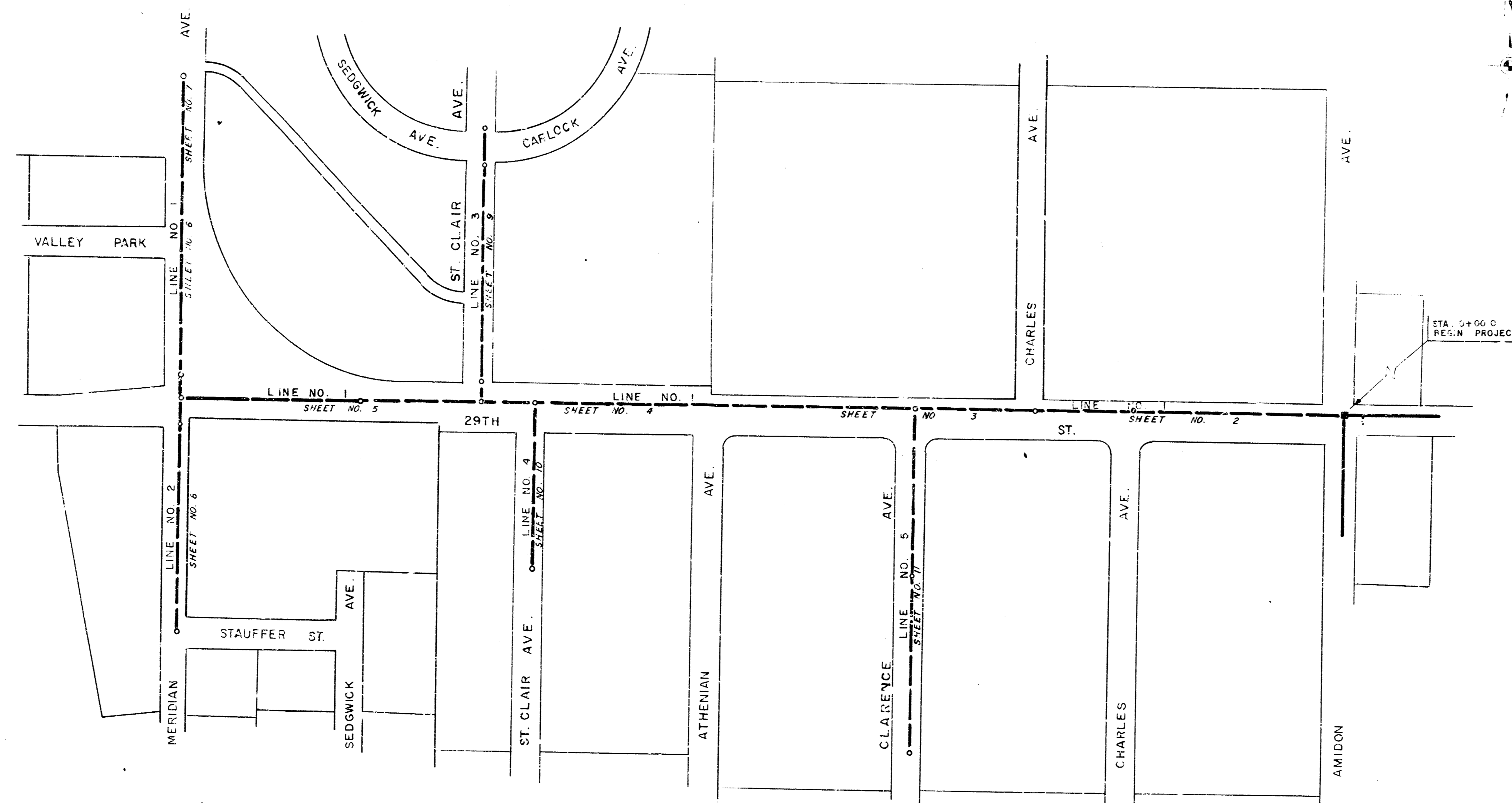
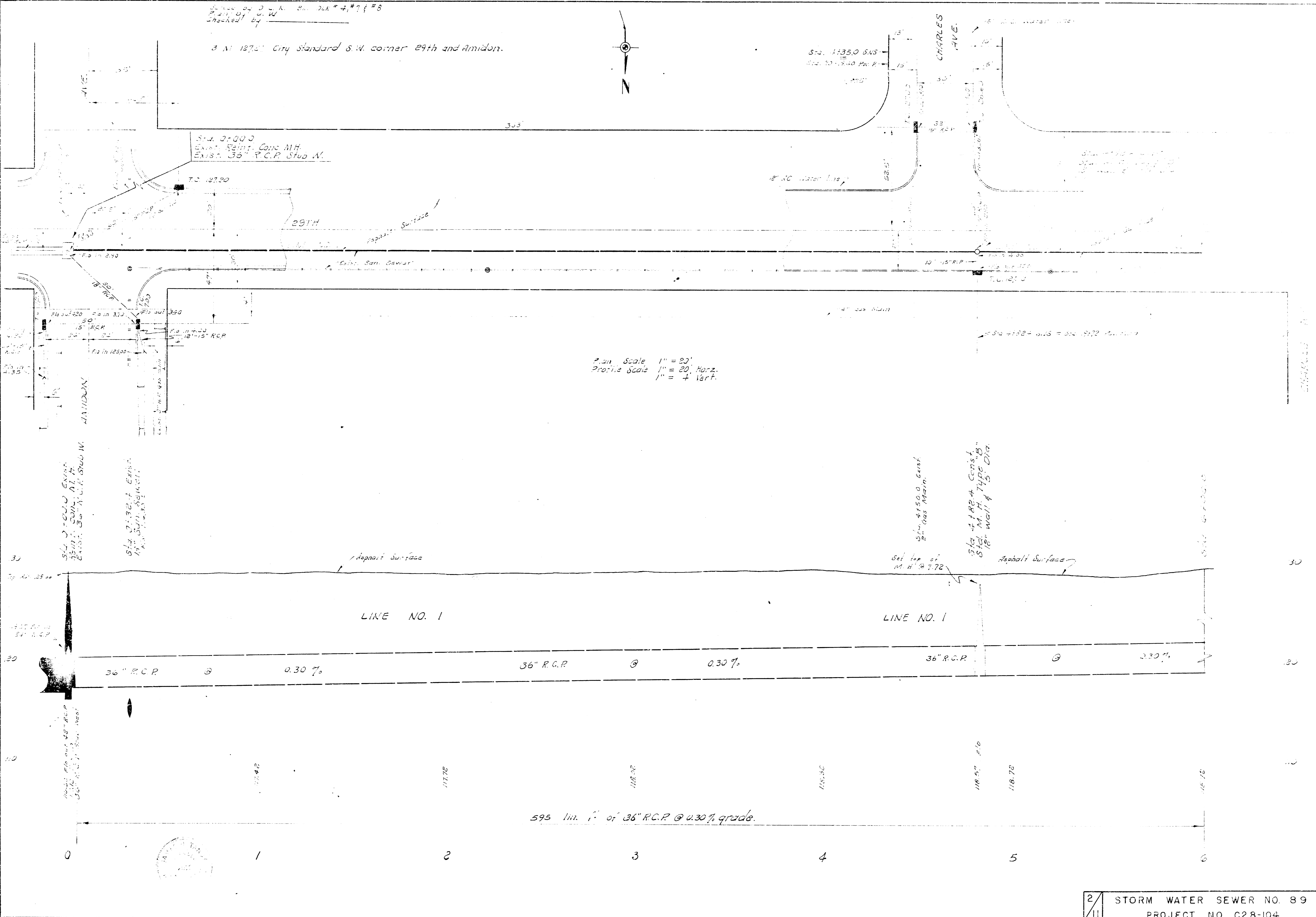
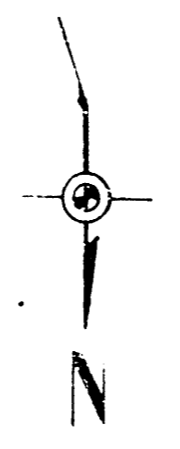


PLAN AND PROFILE FOR  
STORM WATER SEWER NO. 89  
CITY OF WICHITA, KANSAS  
B. E. SMITH — CITY ENGINEER  
PROJECT NO. C28-104



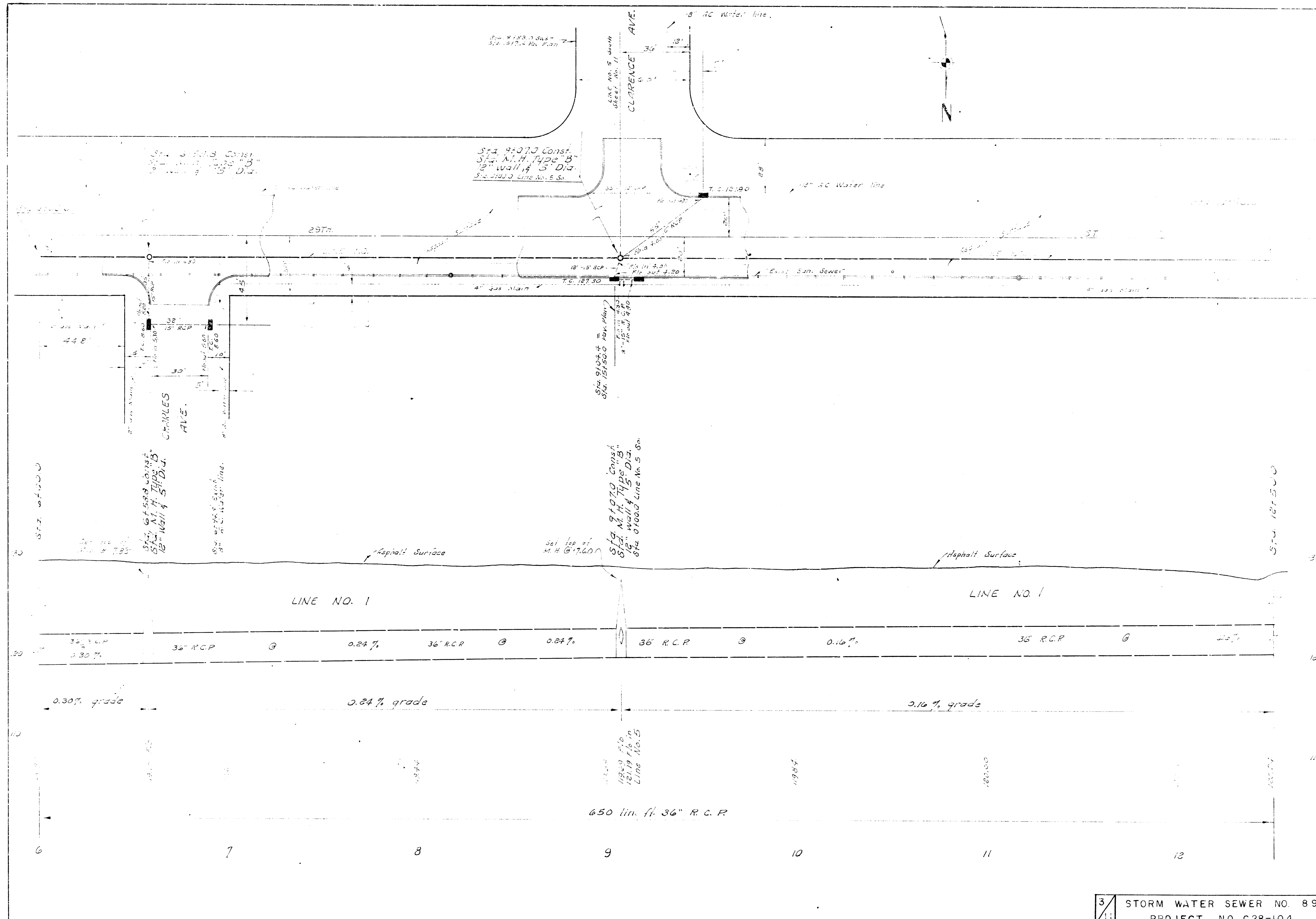
1 STORM WATER SEWER NO. 89  
11 PROJECT NO. C28-104

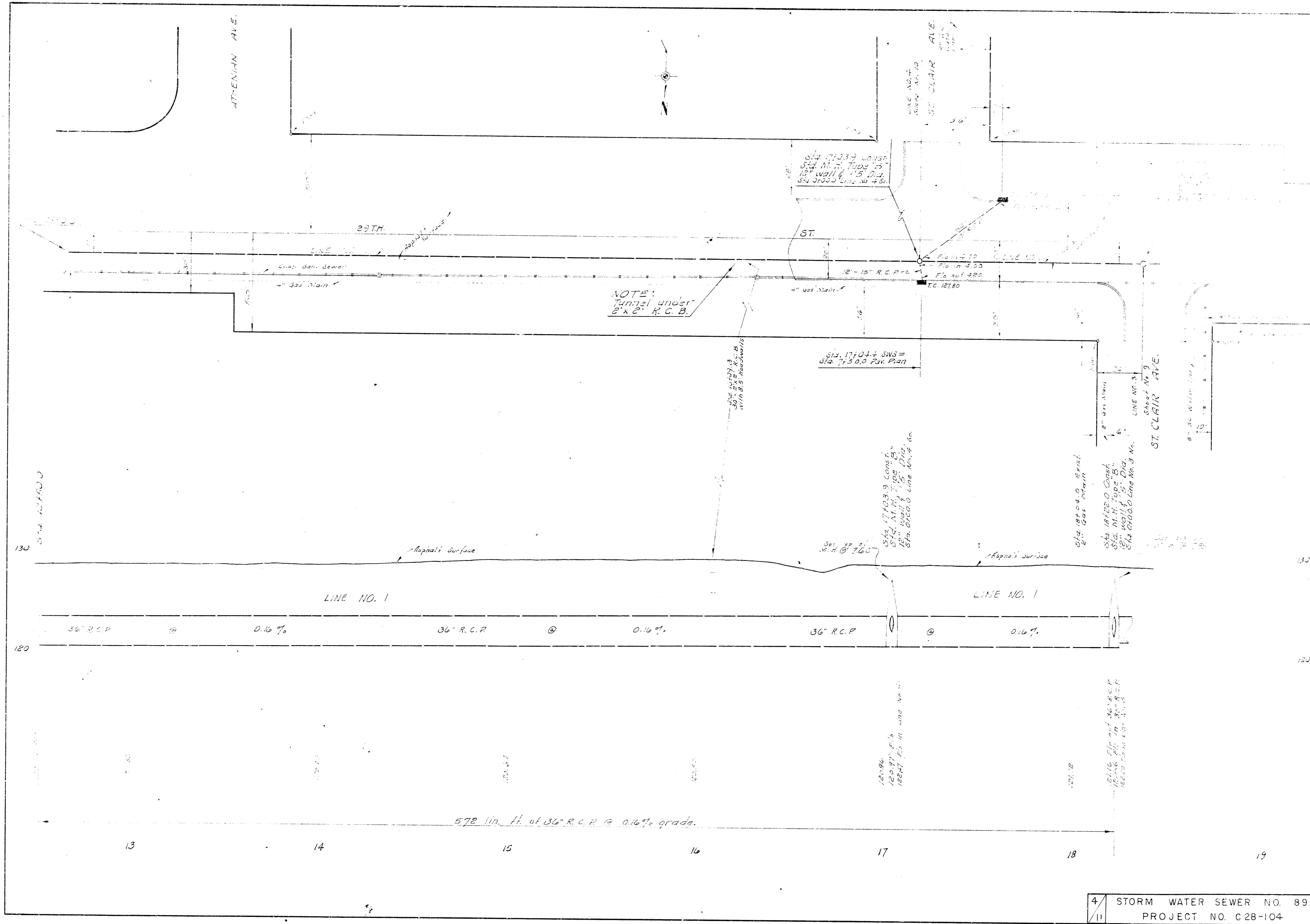
Station 0+00.0  
 3 N. 127.5' City Standard S.W. corner 29th and Amidon.



Plan Scale 1" = 50'  
 Profile Scale 1" = 20' Horiz.  
 1" = 4' Vert.

595 Lin. Ft. of 36" R.C.P. @ 0.30% grade.

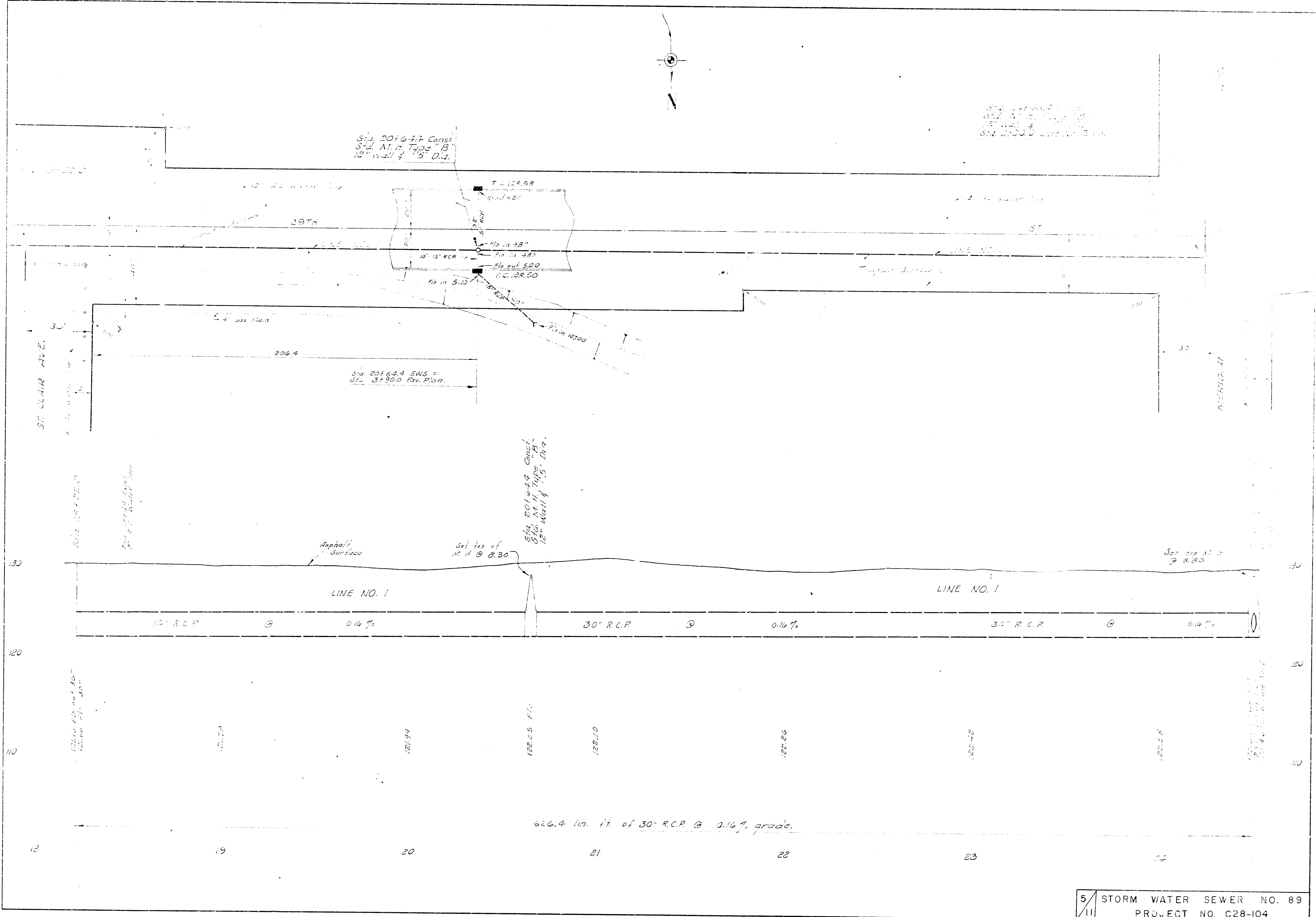


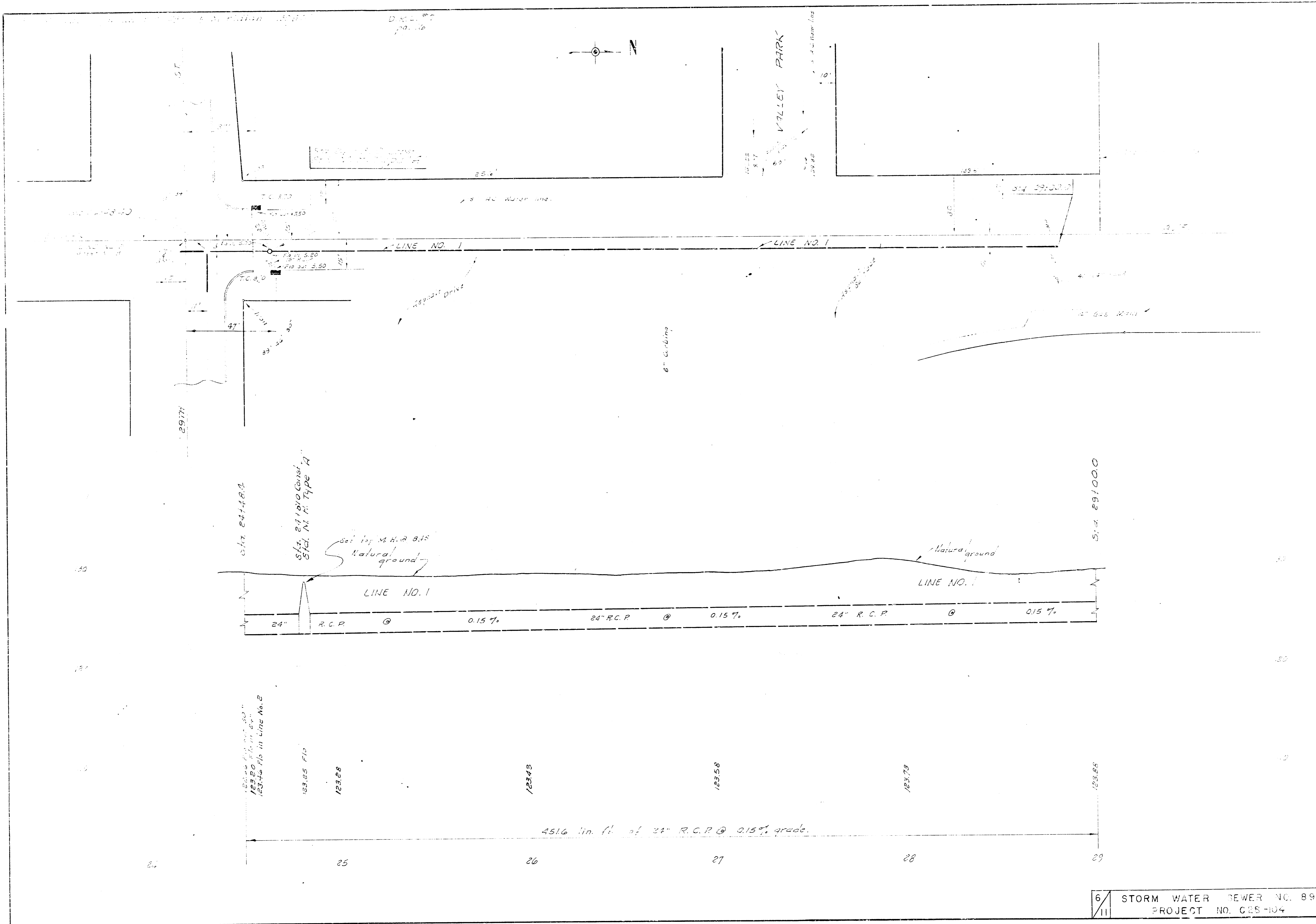


NOTE:  
Tunnel under  
2' x 2' R.C.B.

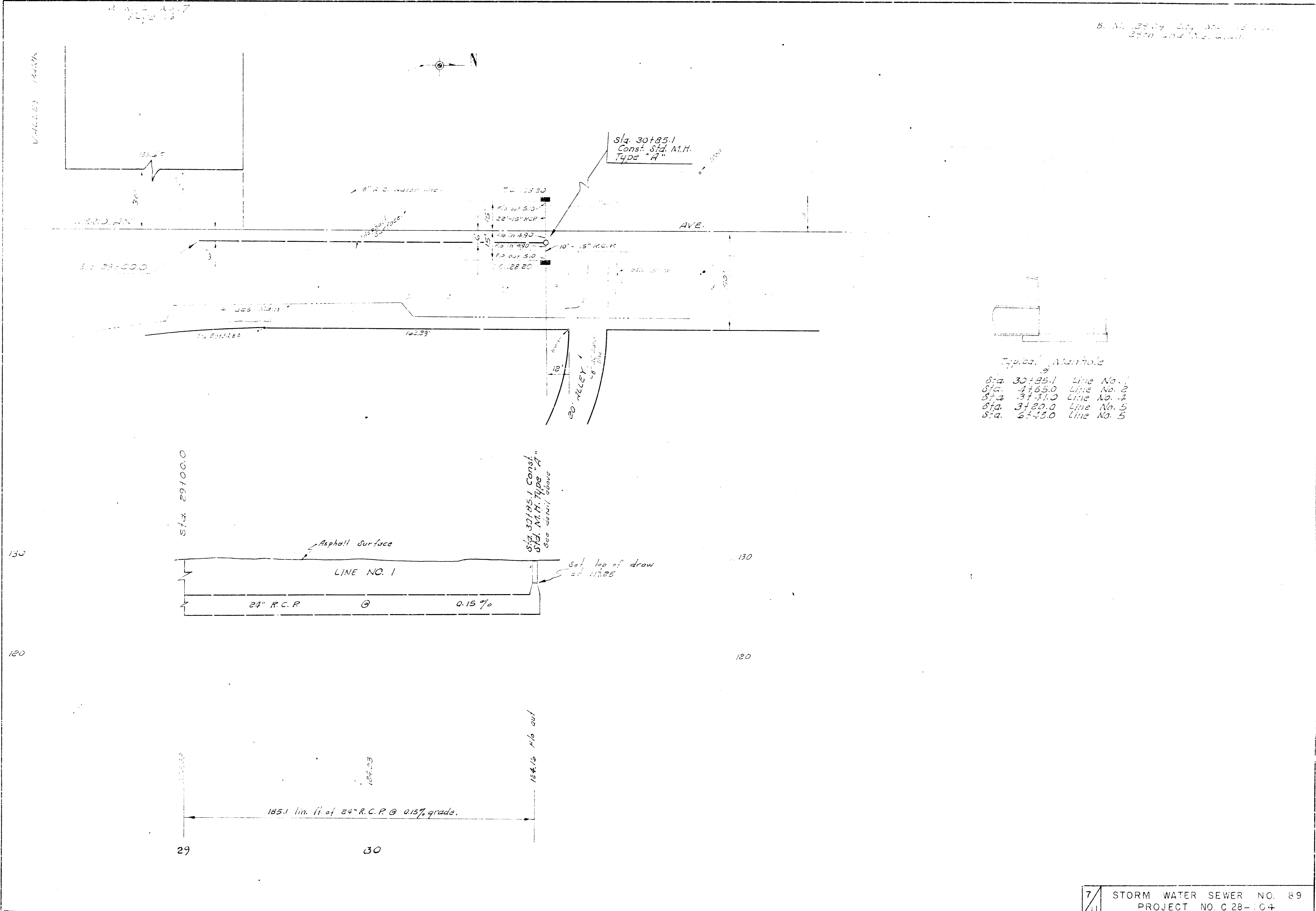
Sta. 17+01.4 SWS =  
Sta. 7+50.0 Pav. Plan

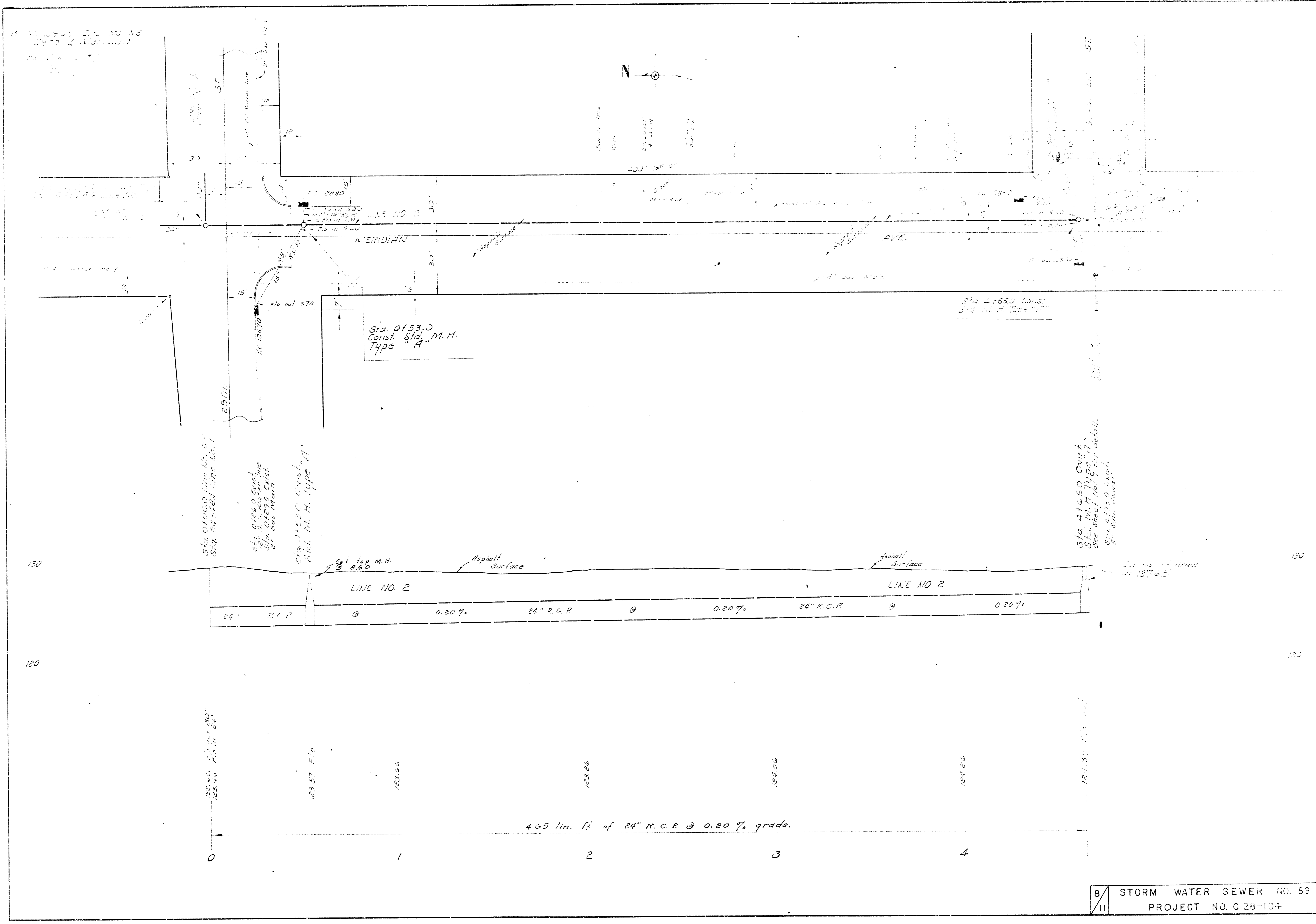
578 lin. ft. of 36\"/>





6 / STORM WATER SEWER NO. 89  
 11 / PROJECT NO. CES-104





8  
11  
12

130  
120

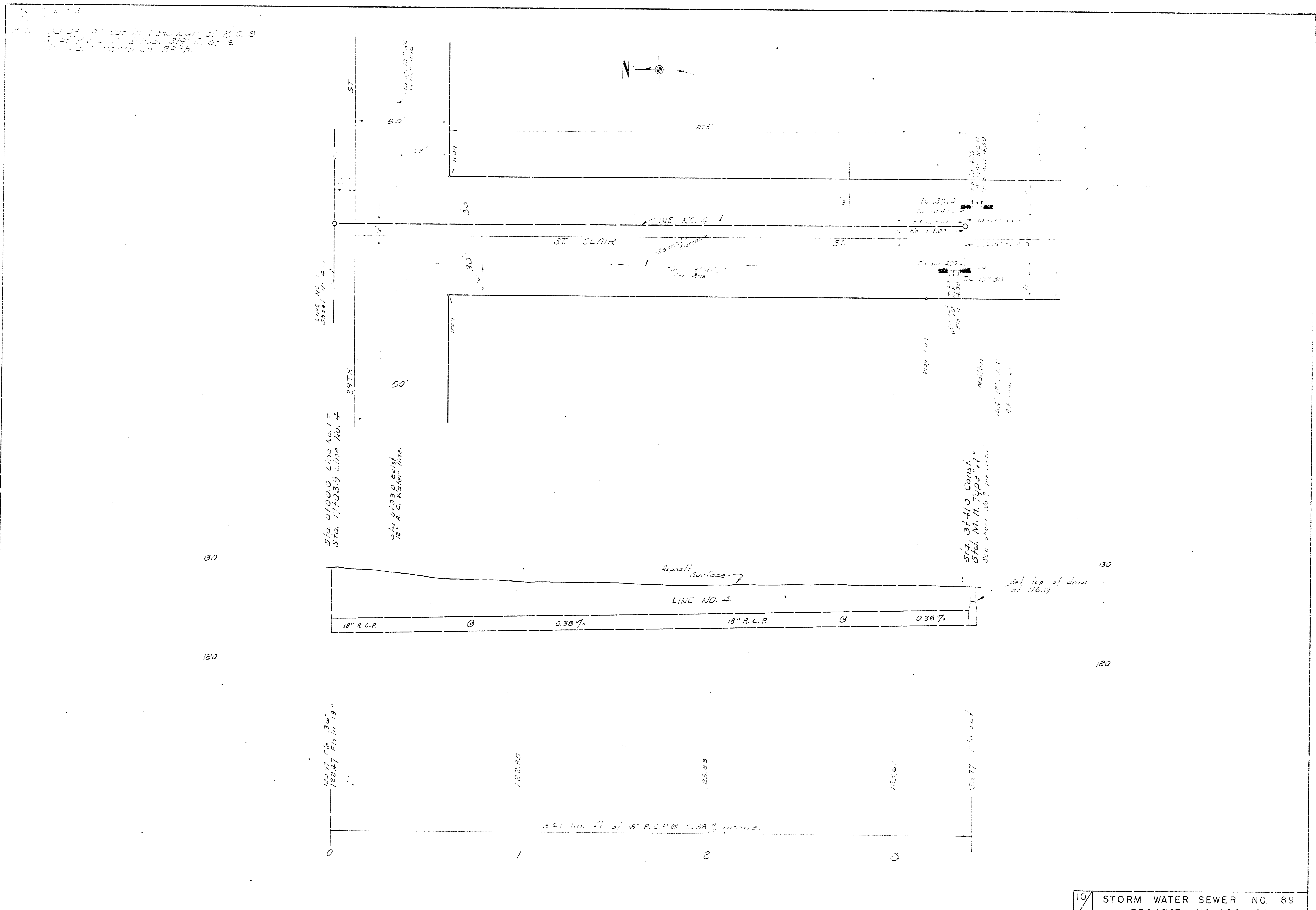
130  
120

0 1 2 3 4

4.65 lin. ft. of 24" R.C.P. @ 0.20% grade.

8  
11  
12





1. ALL WORK TO BE IN ACCORDANCE WITH THE CITY OF CHICAGO  
 2. ALL WORK TO BE IN ACCORDANCE WITH THE CITY OF CHICAGO  
 3. ALL WORK TO BE IN ACCORDANCE WITH THE CITY OF CHICAGO

130  
120

