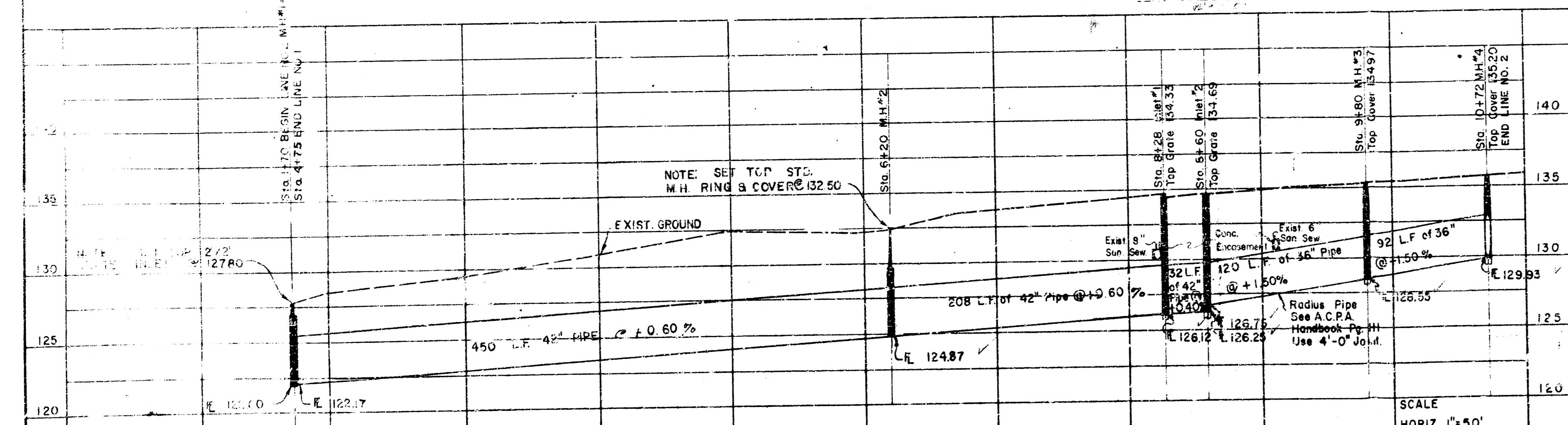
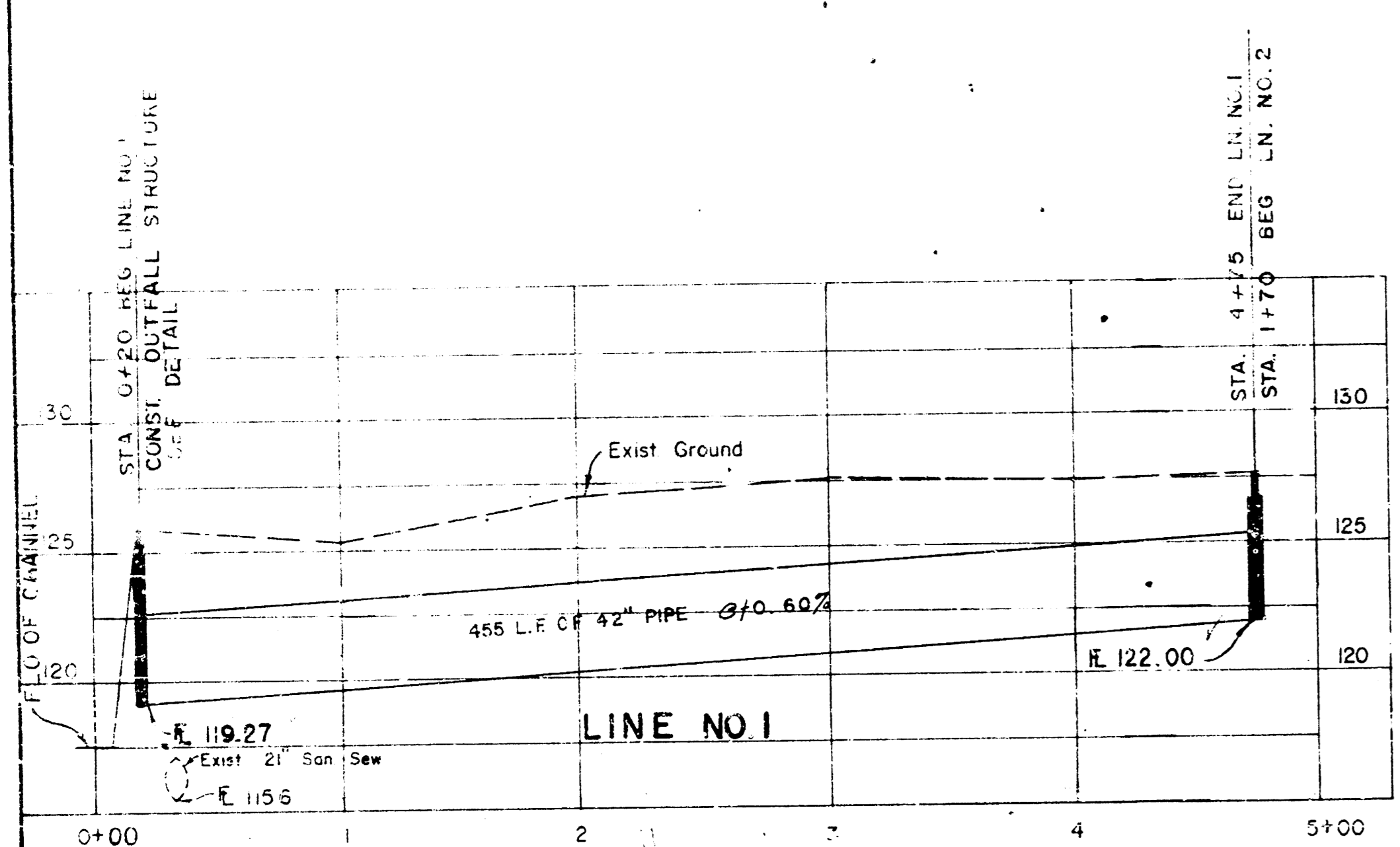
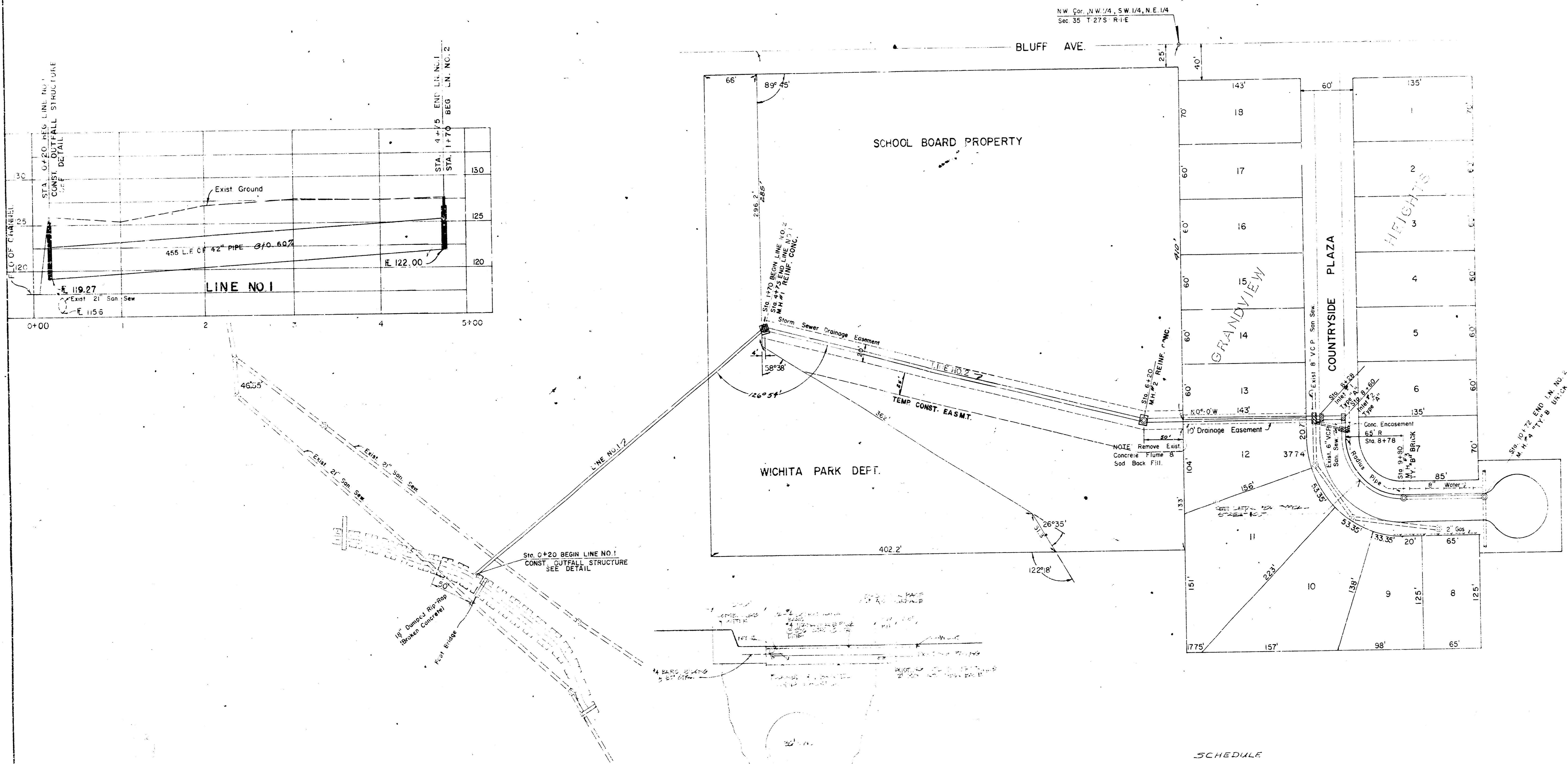
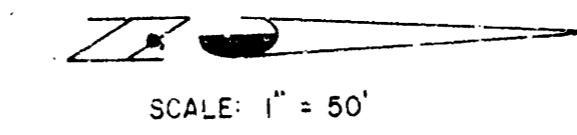


NOTE TO CONTRACTOR

Excess dirt from project is to be disposed of on school site. Contact Board of Education for location.

1. 11.12.51 "R" in Ritchie N. ab. Meadowlane & W. W.L. Bluff
 2. 11.12.51 "R" in Ritchie S. ab. Funston W.L. Bluff
 3. 11.12.51 "K" in King ab. W.L. N.S. Countryside Plaza & W.L. Bluff
 4. 11.12.51 "T" Top ball N. and S. Subguard of wooden bridge @ Bluff & Mt. Vernon



SCHEDULE

Line # 1
 Outfall Structure
 455 Lin. Ft. 42" R.C.P.
 Rip - Rep
 Backfill & Flushing as reqd.

Line # 2
 2- Reinf. Conc. Manholes
 2- TYPE "B" Brick Manholes
 2- Reinf. Conc. Inlets
 690 Lin. Ft. 42" R.C.P.
 212 Lin. Ft. 36" R.C.P.
 539 Sewer Encasement
 Pavement Rem. & Rep. as Reqd.
 Backfill & Flushing as Reqd.
 Fence Rem. & Rep.

Note: All material, labor, extra work, removal, appurtenances etc. necessary to properly complete the project to be included in the lump sum bid of Lines #1 & 2

