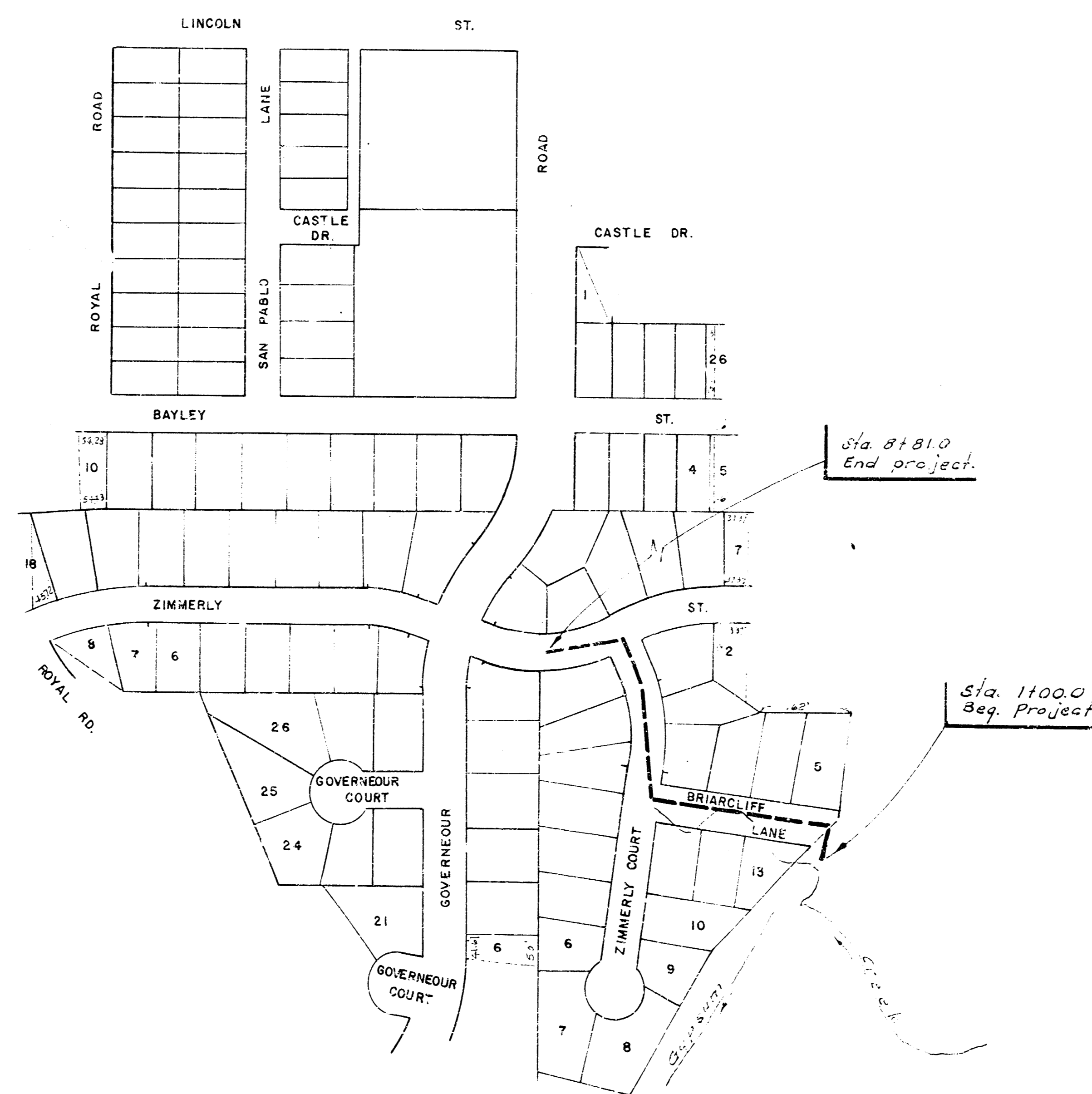
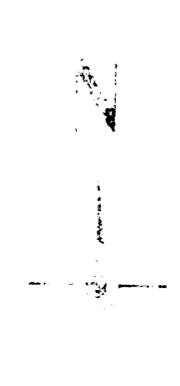


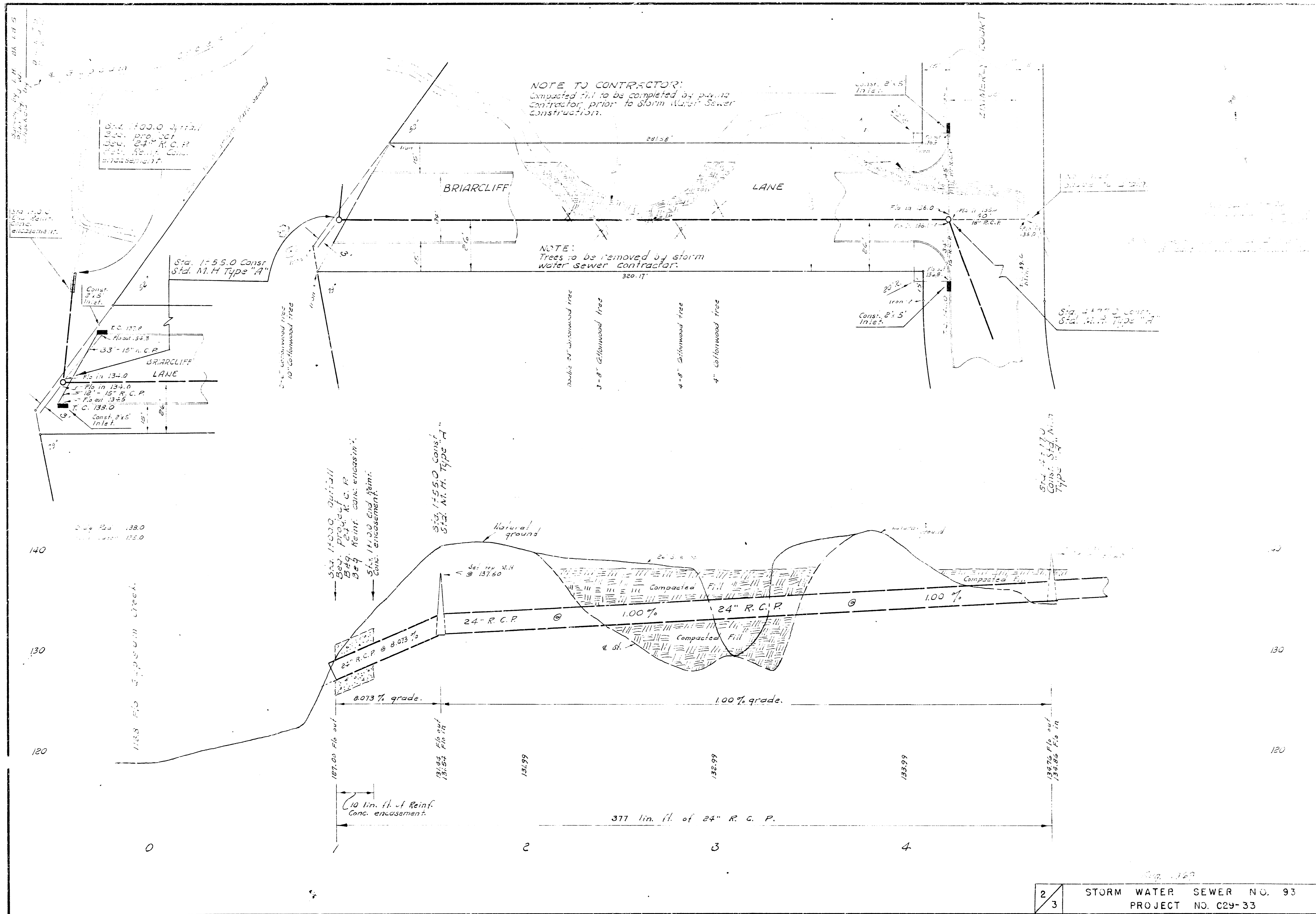
PLAN AND PROFILE FOR
STORM WATER SEWER NO. 93

CITY OF WICHITA, KANSAS

B. E. SMITH - CITY ENGINEER

PROJECT NO. C29-33

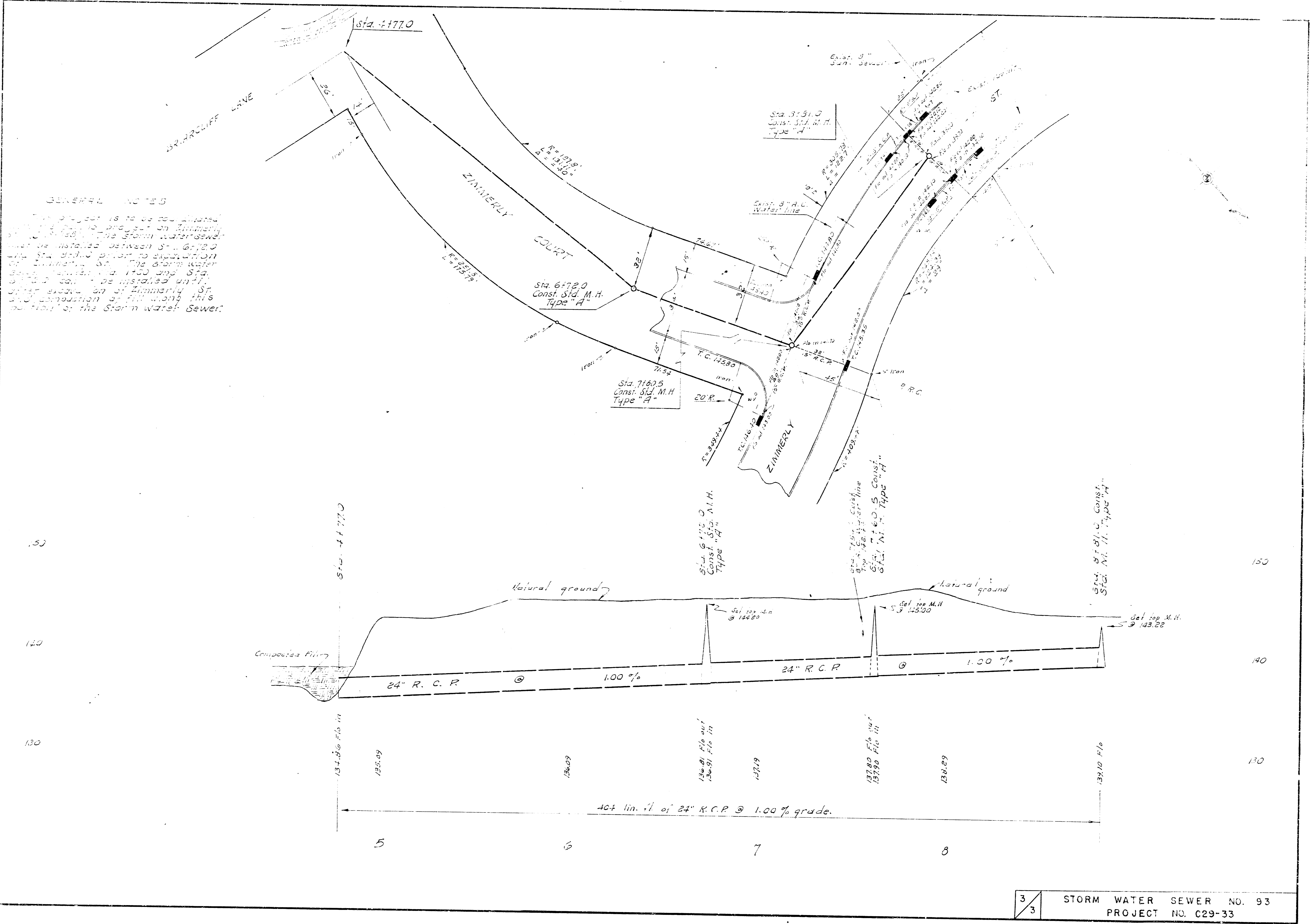




NOTE TO CONTRACTOR:
 Compacted fill to be completed by paving contractor prior to Storm Water Sewer construction.

NOTE:
 Trees to be removed by storm water sewer contractor:

- double 24" whitewood tree
- 3-8" Silverwood tree
- 4-8" Silverwood tree
- 4" whitewood tree



GENERAL NOTES

The project is to be installed on Zimmerman St. The storm water sewer will be installed between Sta. 6172.0 and Sta. 8150.0. The storm water sewer will be installed until after the construction of Zimmerman St. and the installation of the storm water sewer.