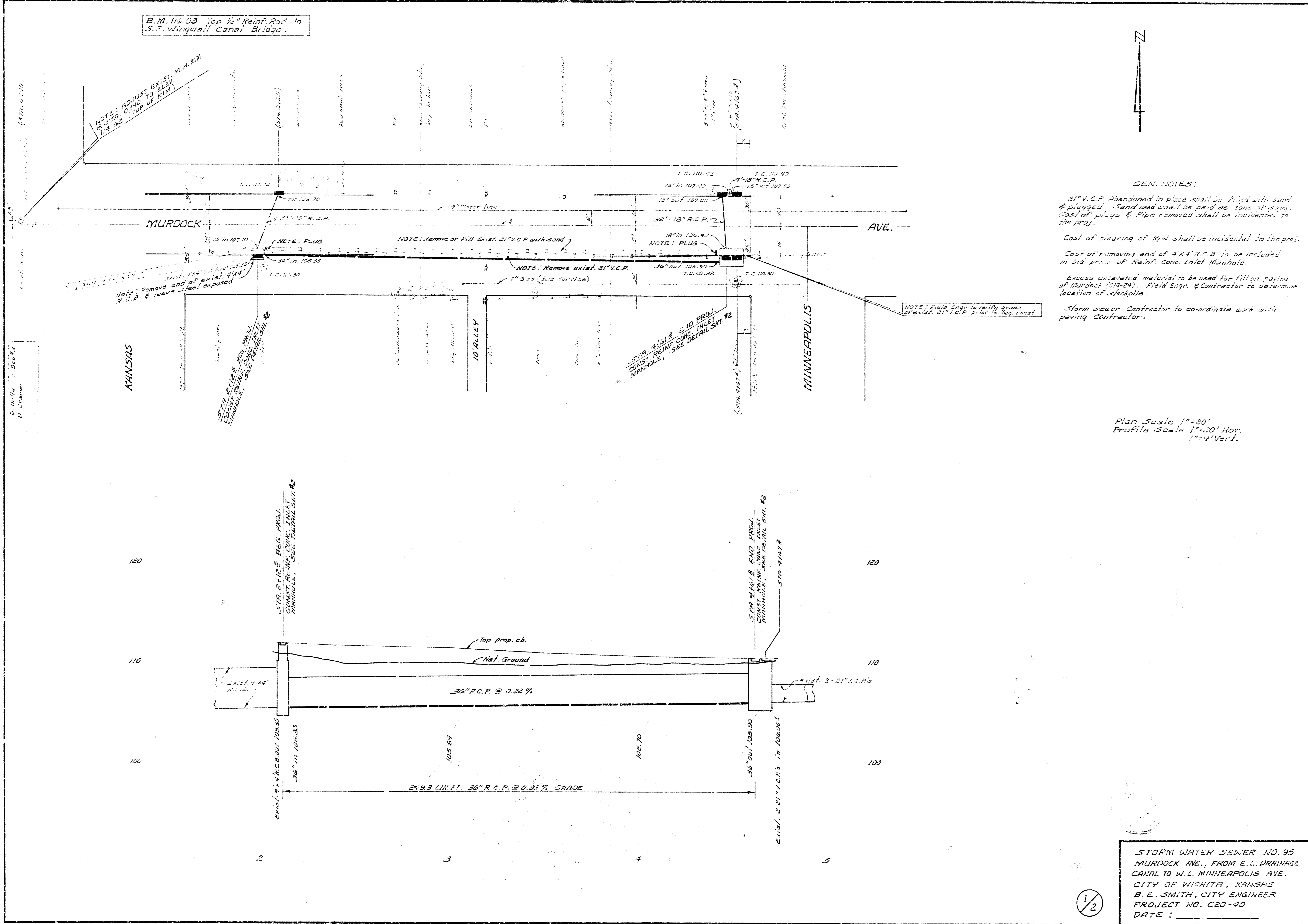


B.M. 116.03 Top 1/2" Rain P. Rod in S.W. Wingwall Canal Bridge.



GEN. NOTES:

21" V.C.P. abandoned in place shall be filled with sand & plugged. Sand used shall be paid as tons of sand. Cost of plugs & pipe removed shall be incidental to the job.

Cost of clearing of R/W shall be incidental to the job.

Cost of removing end of 4'x4' R.C.B. to be included in bid price of Rain Cone Inlet Manhole.

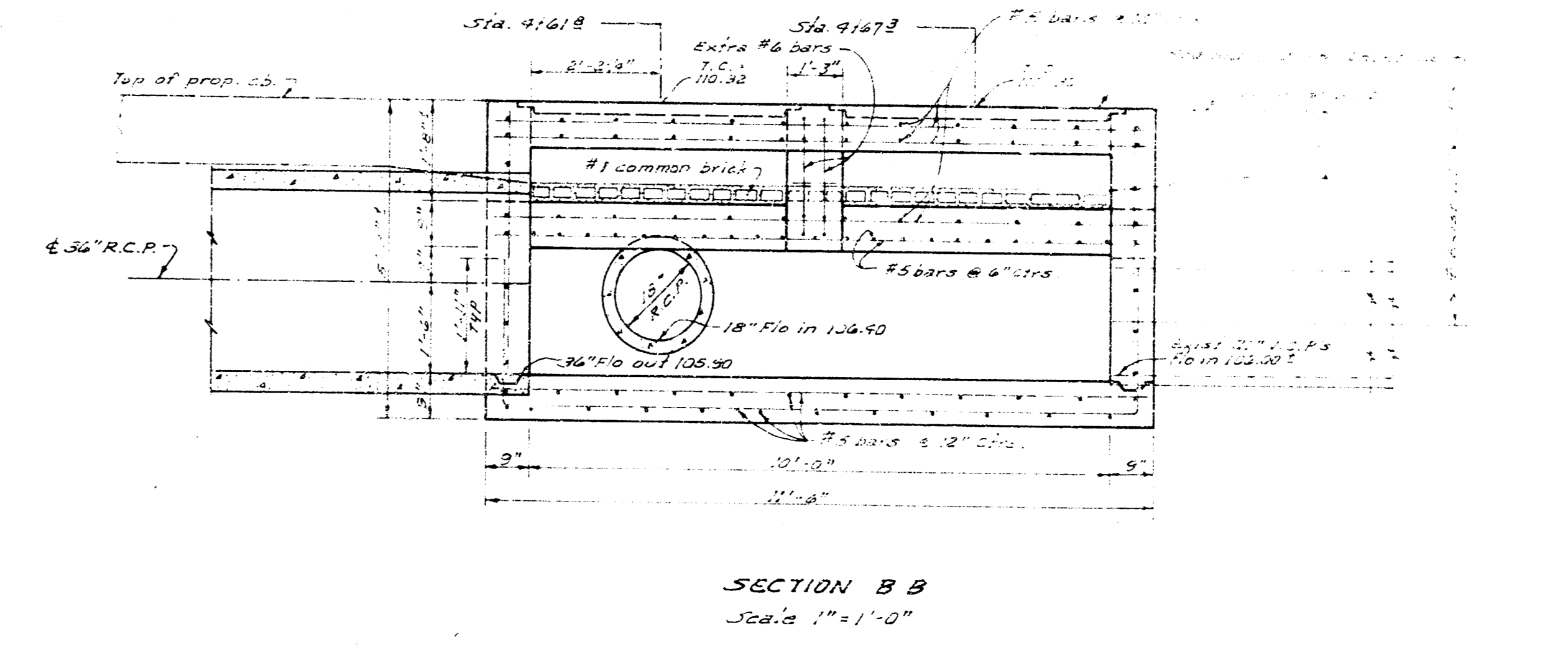
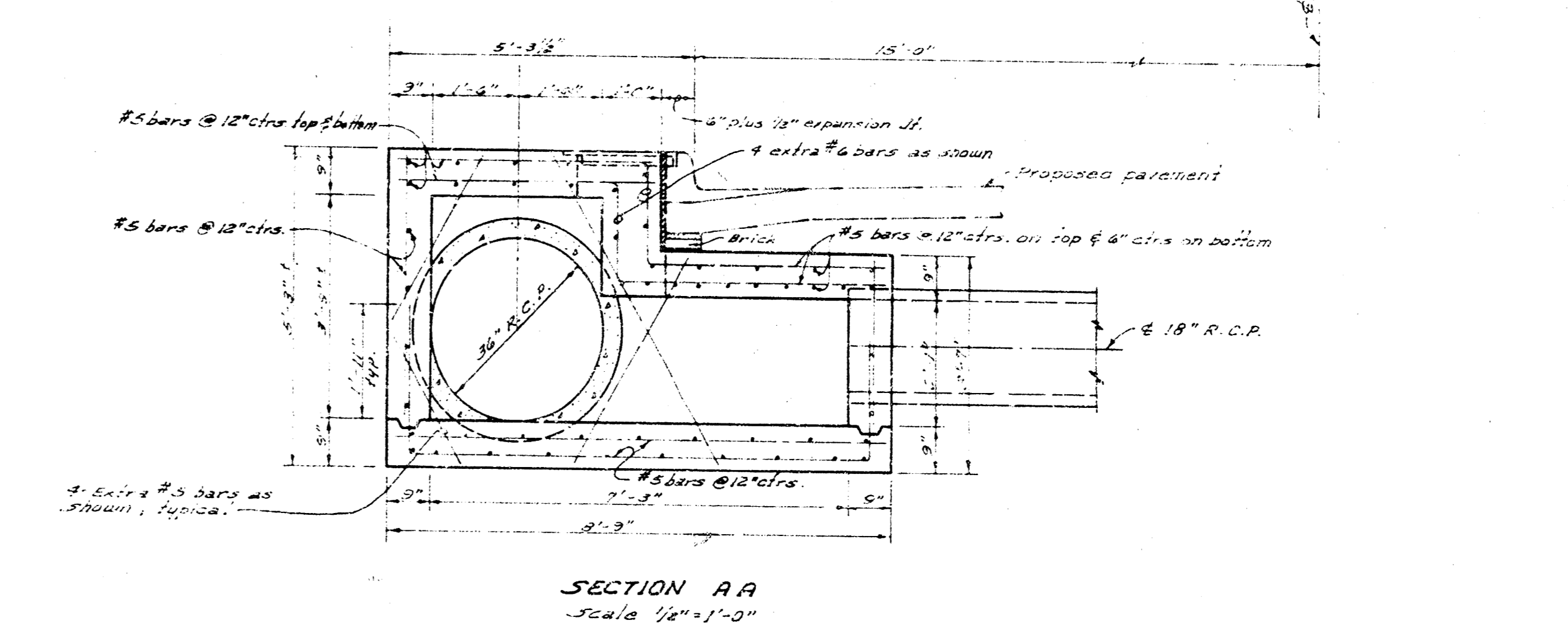
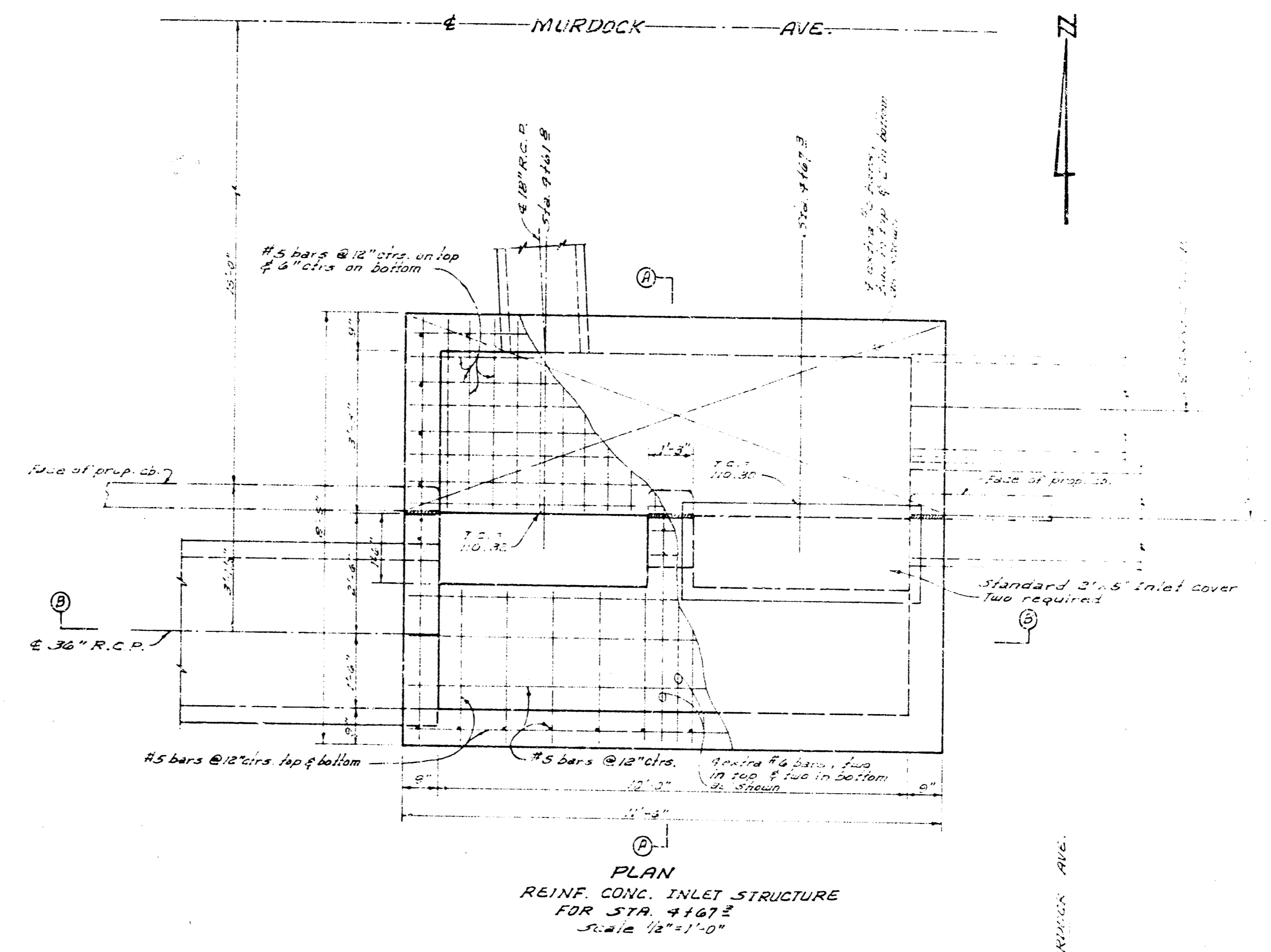
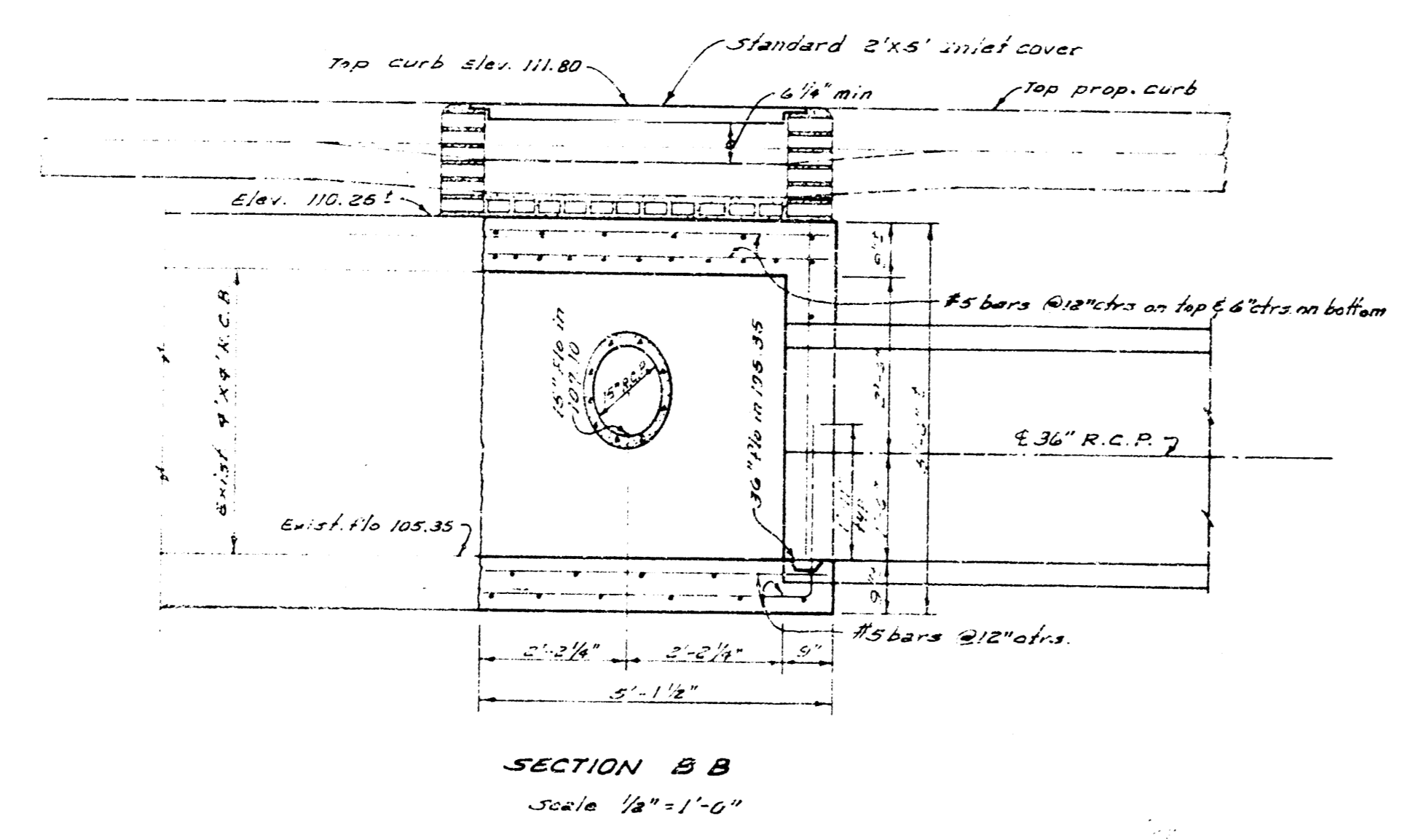
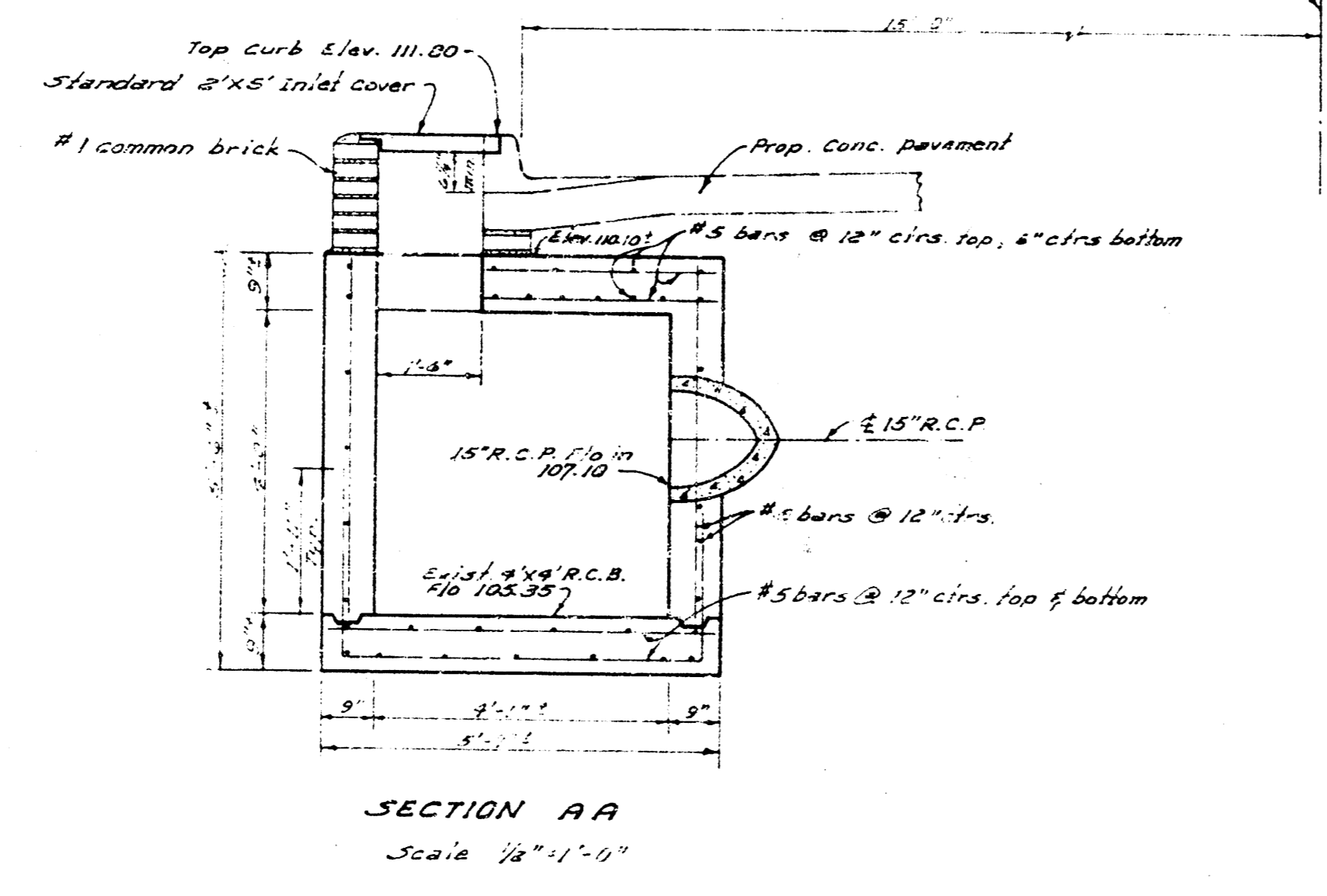
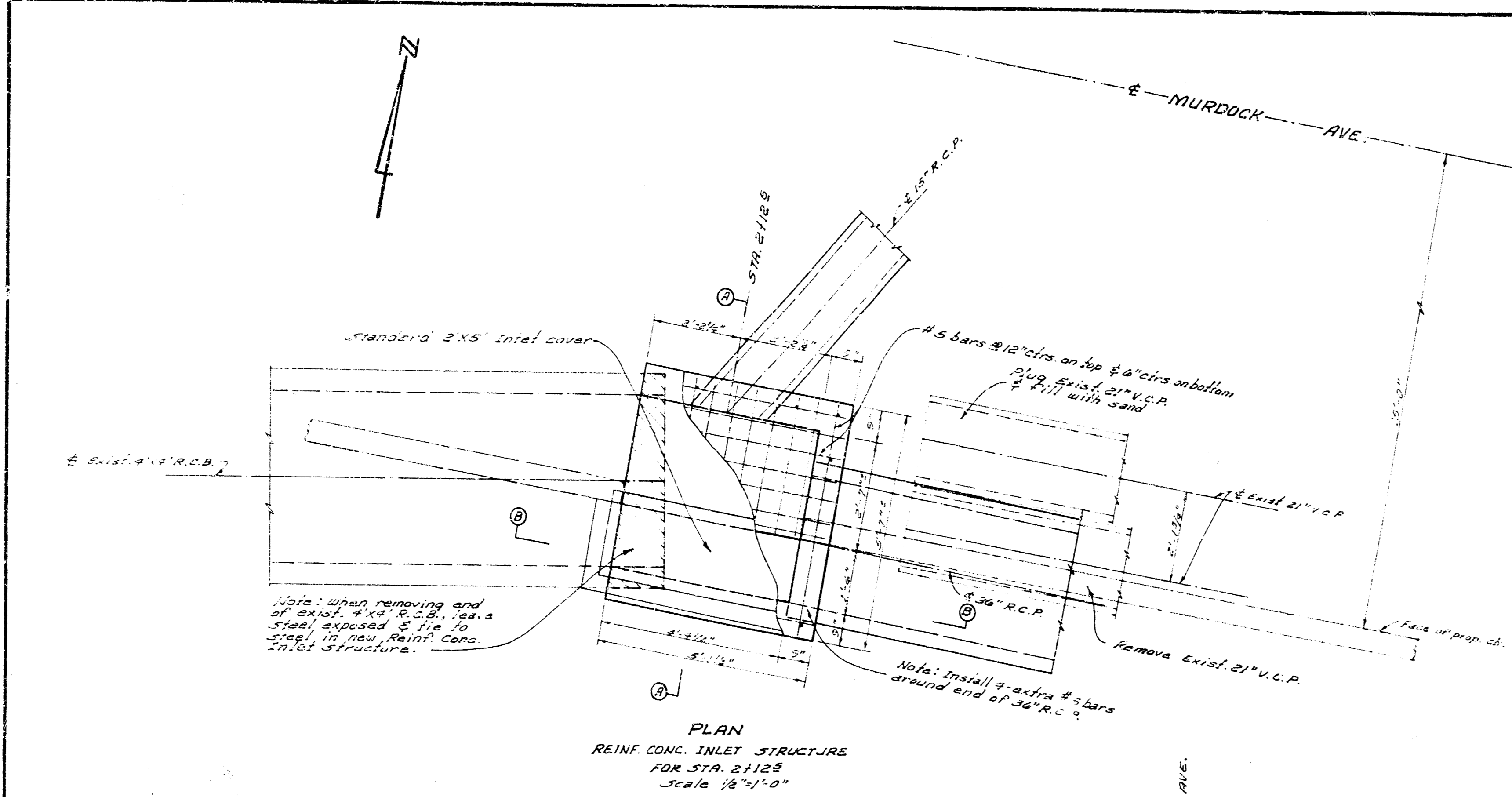
Excess excavated material to be used for fill on paving of Murdock (21-22). Field Engr. & Contractor to determine location of stockpile.

Storm sewer Contractor to coordinate work with paving Contractor.

Plan Scale 1"=20'
 Profile Scale 1"=20' Hor.
 1"=4' Vert.

STORM WATER SEWER NO. 95
 MURDOCK AVE., FROM E.L. DRAINAGE
 CANAL TO W.L. MINNEAPOLIS AVE.
 CITY OF WICHITA, KANSAS
 B. E. SMITH, CITY ENGINEER
 PROJECT NO. C20-40
 DATE: _____

1/2



2/2 STORM WATER SEWER NO. 95
MURDOCK AVE.
FROM E.L. DRAINAGE CRAWL TO W.L.M.M.
PROJ. NO. C20-48