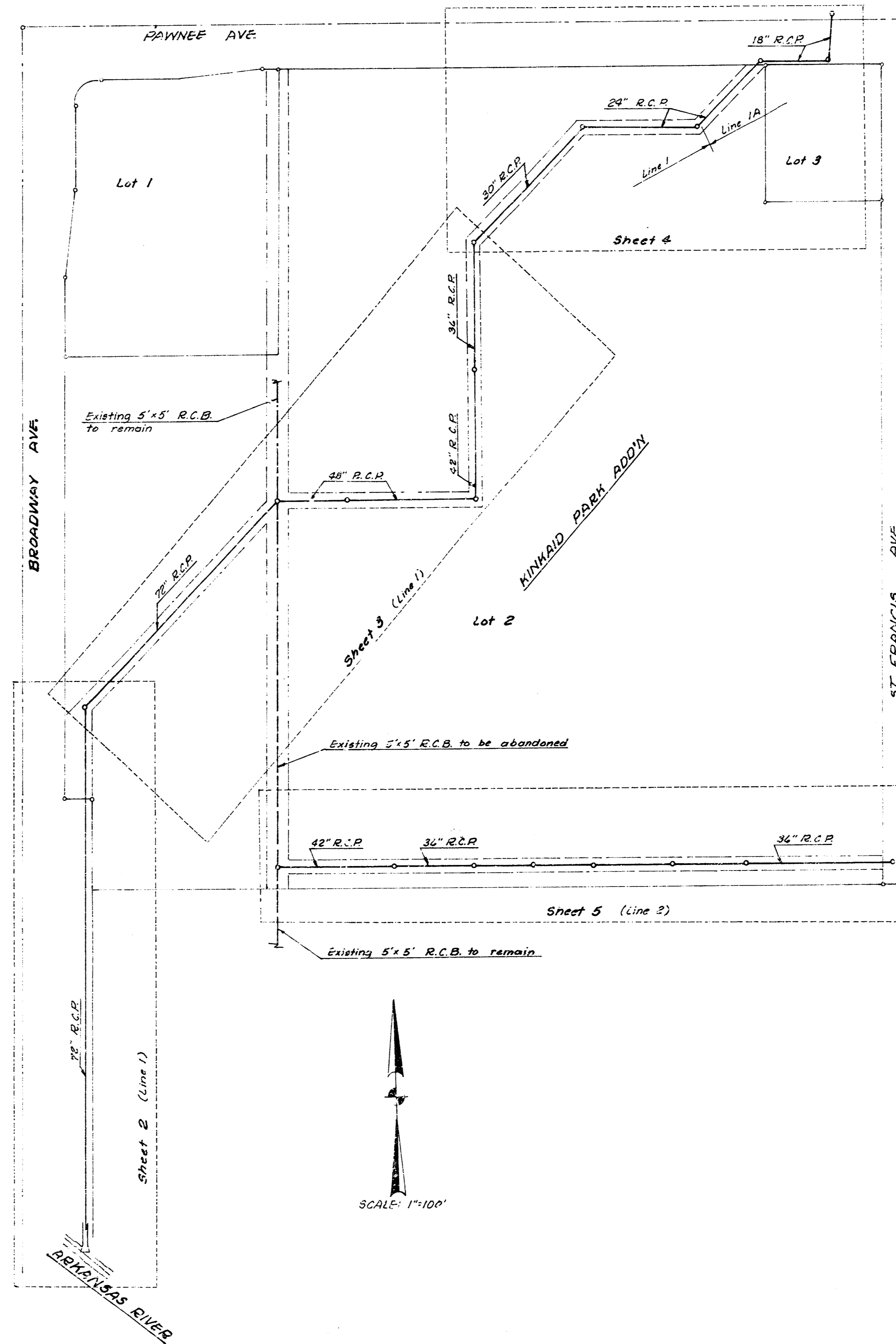


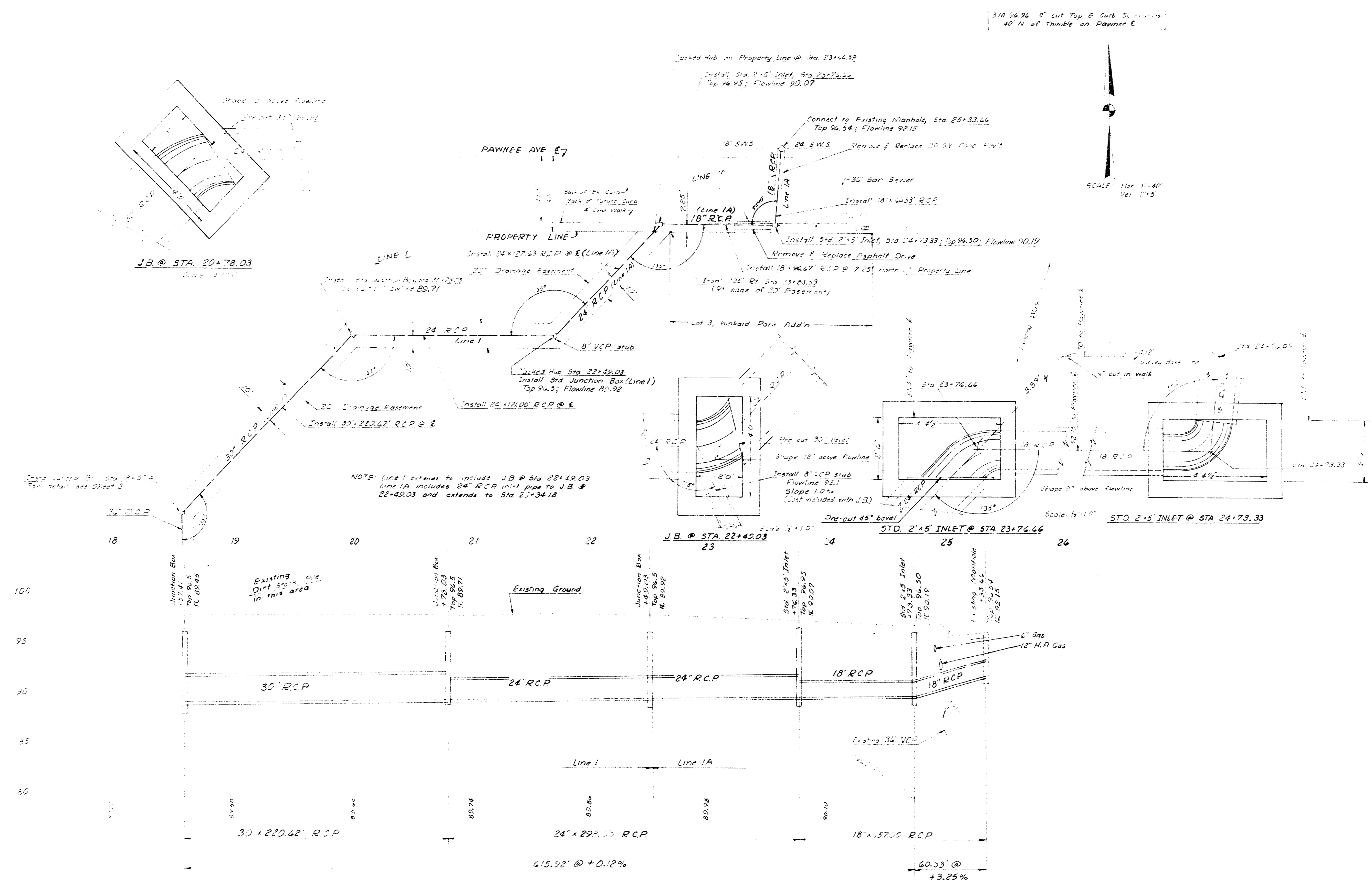
STORM WATER SEWER NO. 101



1/12
W.S.A.

R. W. LINN, CITY ENGINEER
CITY OF WICHITA, KANSAS

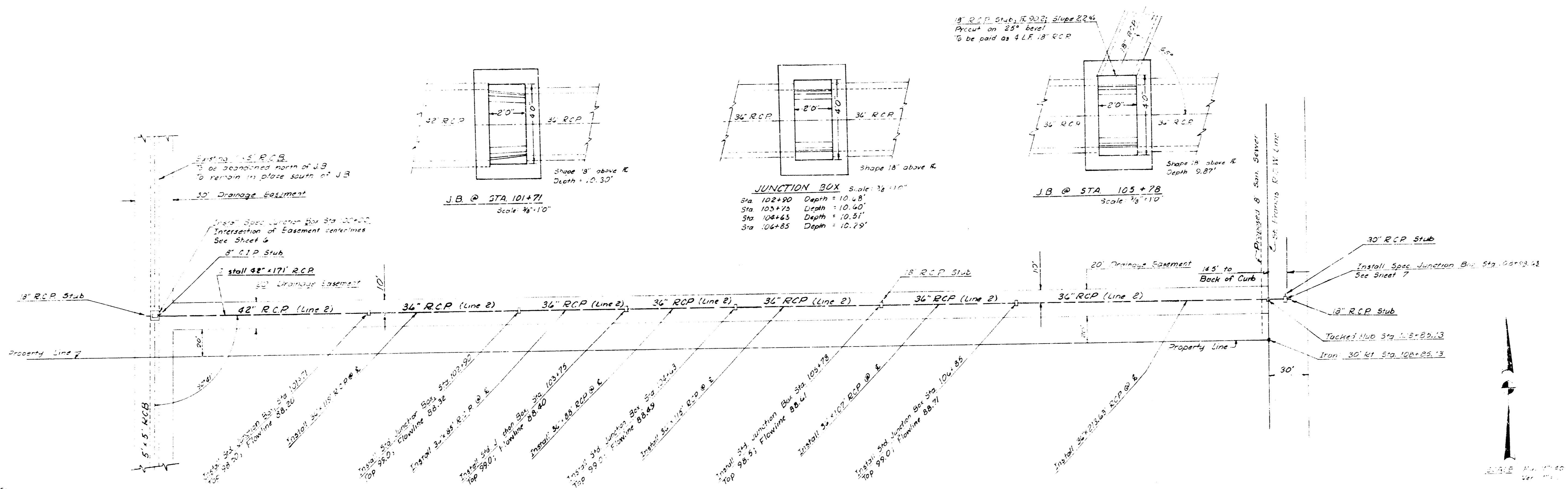
DATE: 6-27-1973



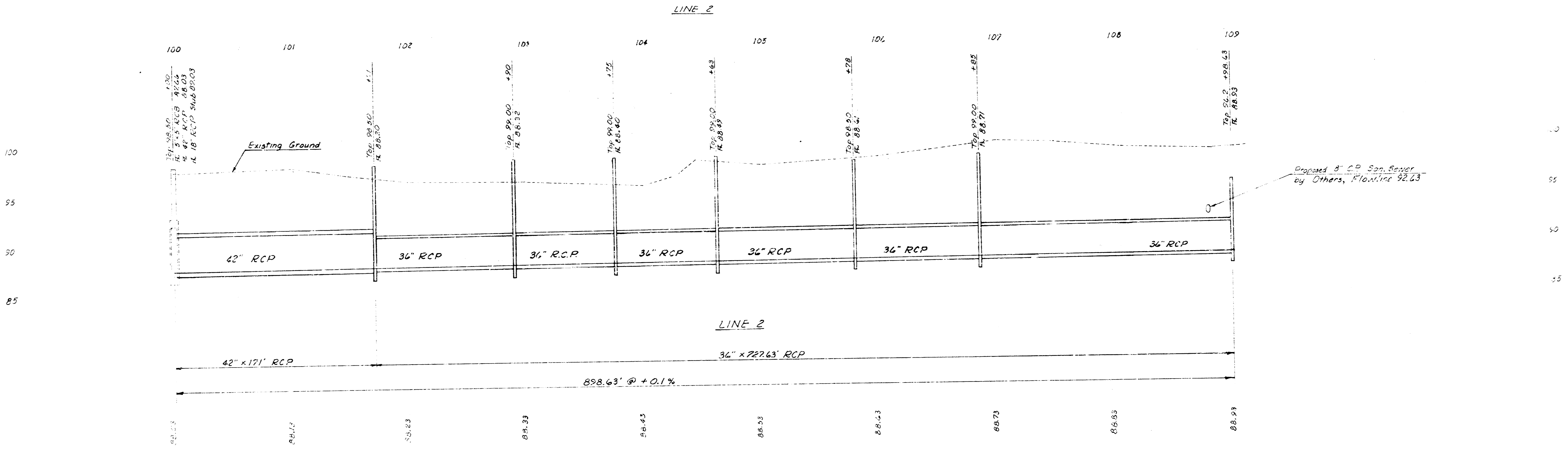
3M 36.94' cut Top 6' curb 50' from
40' N of Thimble on Pawnee E

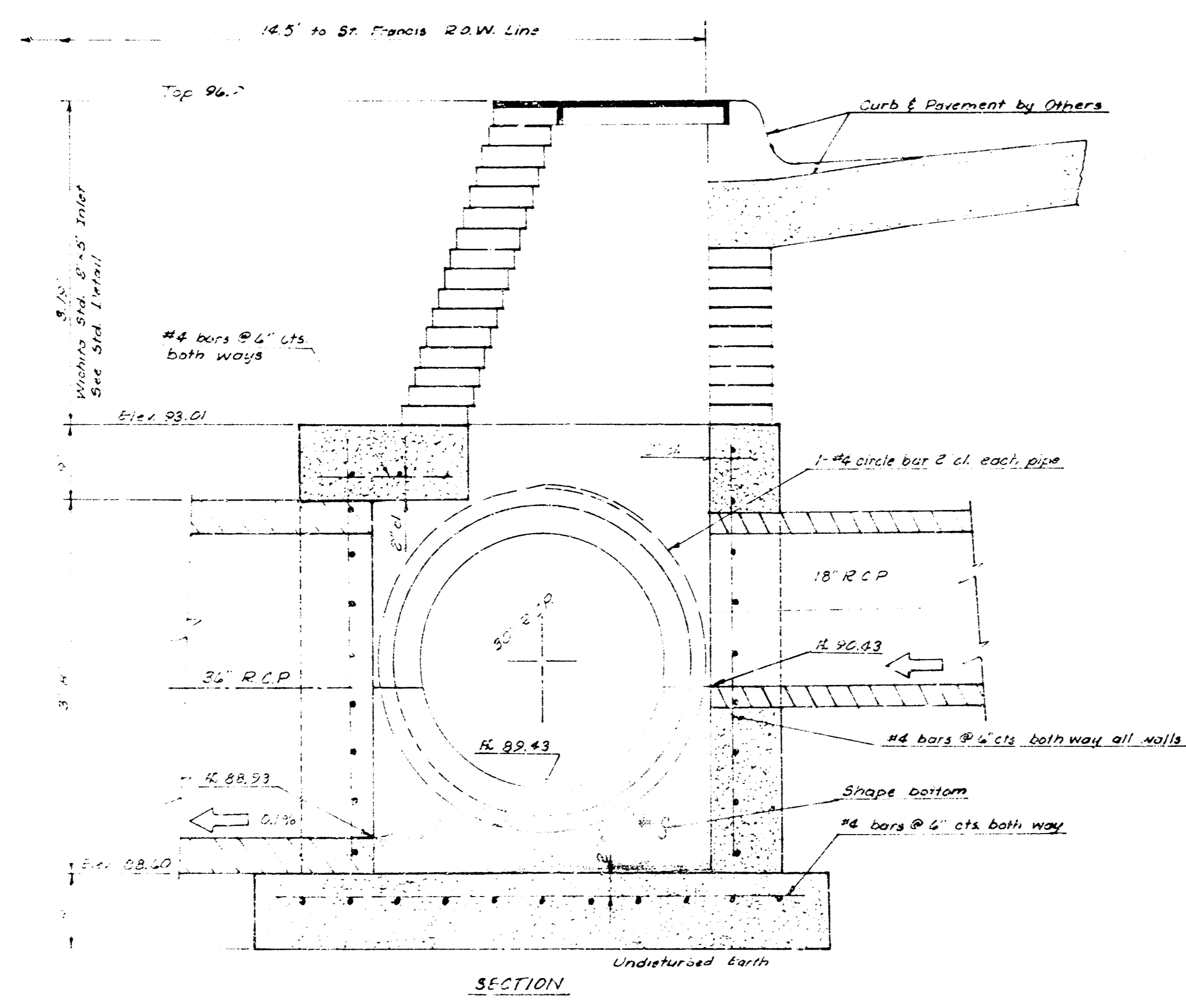
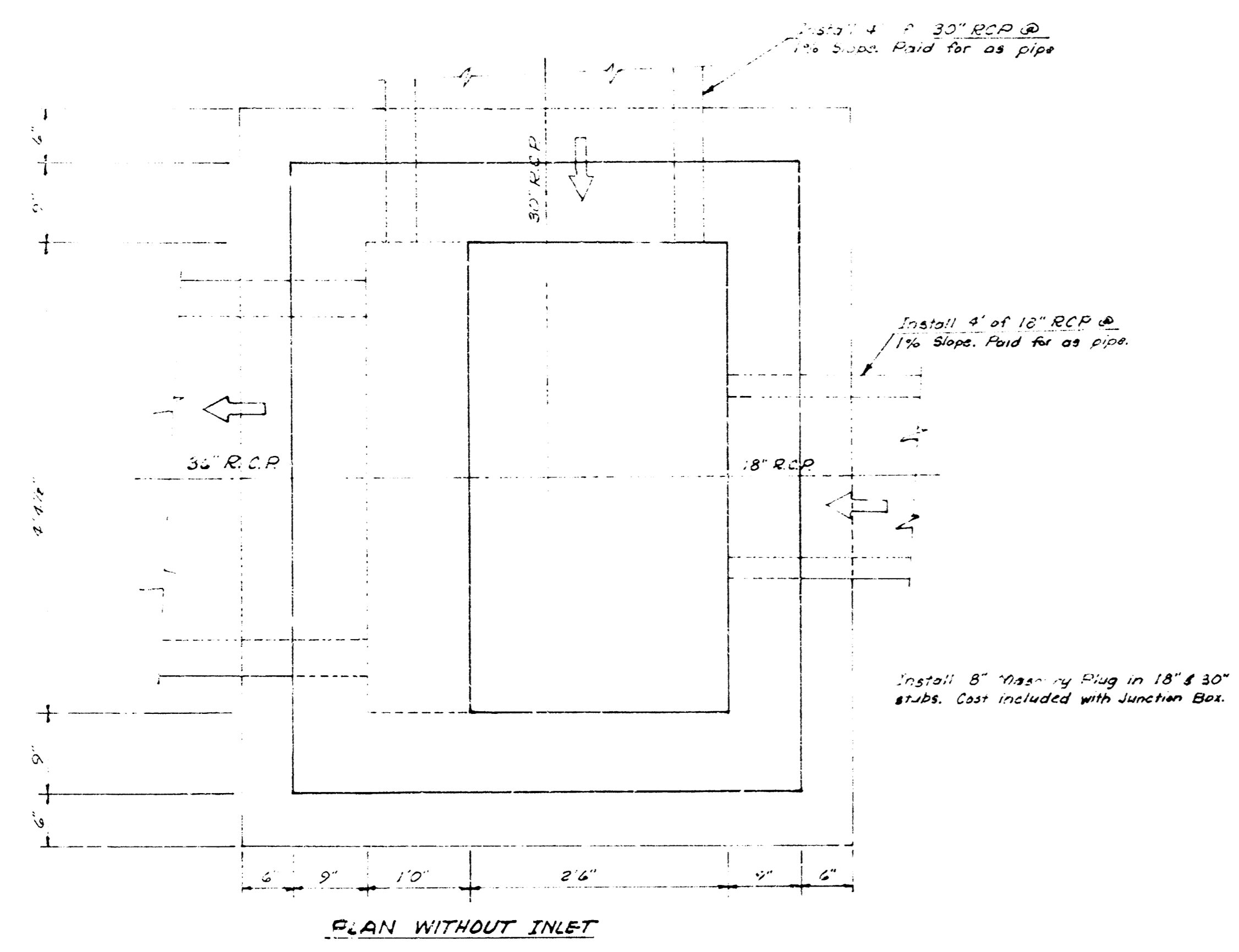


Rev. 1-5-73



NOTE:
Line from River to Sta 12+16.50 to be constructed
and all water from existing 5'x5' RCB bypassed thereto
before altering existing box at Sta. 100+00.





JUNCTION BOX @ 108+98.53
Scale 1"=10'

