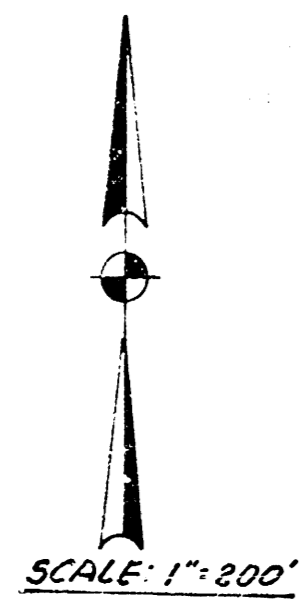
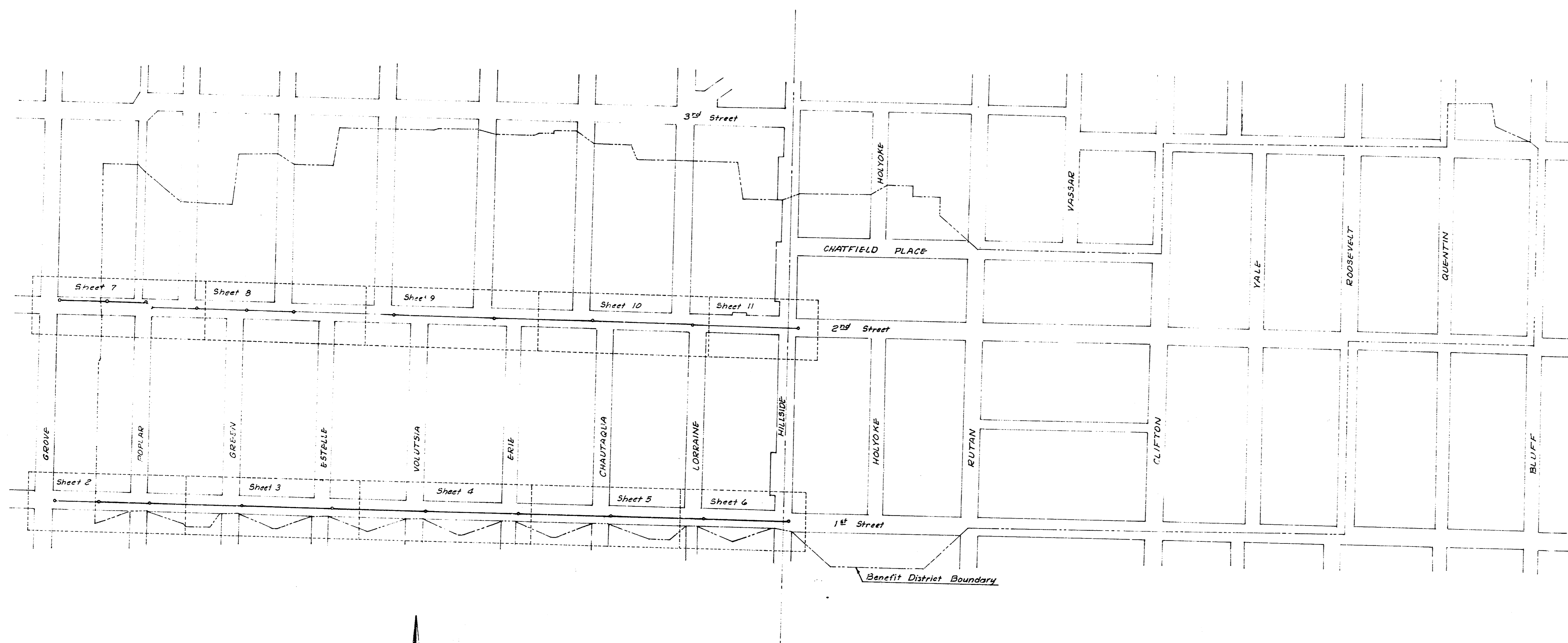


STORM WATER SEWER NO. 105

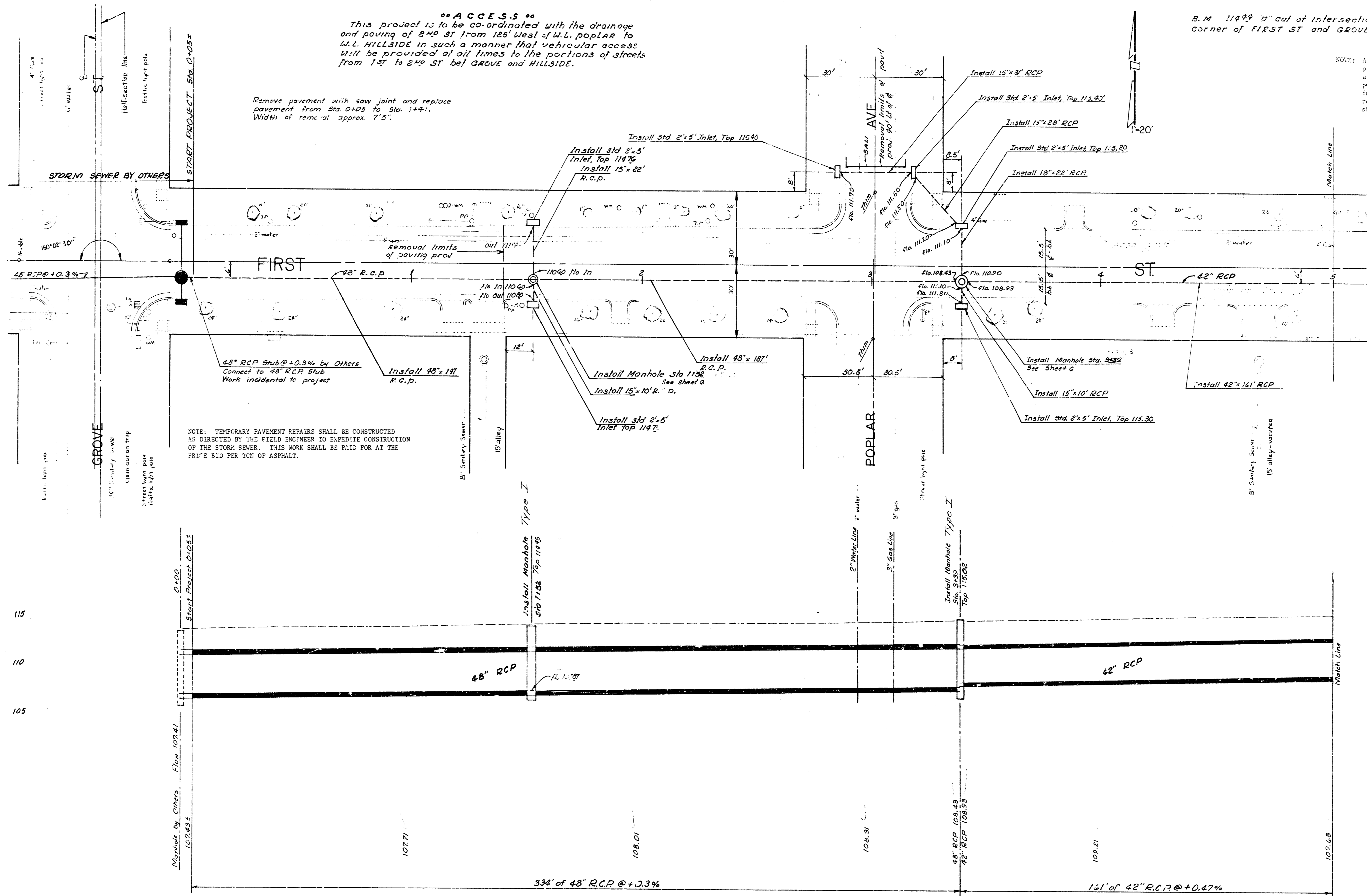


R. W. LINN, CITY ENGINEER
CITY OF WICHITA, KANSAS

DATE _____

STORM WATER SEWER NO. 105
Project No. DB/A 575027

Sheet 1 of 11



ACCESS
 This project is to be co-ordinated with the drainage and paving of Grove St from 185' West of W.L. Poplar to W.L. Hillside in such a manner that vehicular access will be provided at all times to the portions of streets from 1st to 2nd St. bet Grove and Hillside.

Remove pavement with saw joint and replace pavement from Sta 0+05 to Sta 1+47. Width of removal approx. 7'5".

NOTE: TEMPORARY PAVEMENT REPAIRS SHALL BE CONSTRUCTED AS DIRECTED BY THE FIELD ENGINEER TO EXPEDITE CONSTRUCTION OF THE STORM SEWER. THIS WORK SHALL BE PAID FOR AT THE RATE \$1.0 PER YD OF ASPHALT.

B.M. 11428 0' out of intersection of back of 40' E.S. corner of FIRST ST and GROVE ST.

NOTE: All existing and future utility lines on plans shown or below grade as indicated are for information and identification purposes only. Contractor shall have full responsibility in contact with each respective utility company shown or not shown.

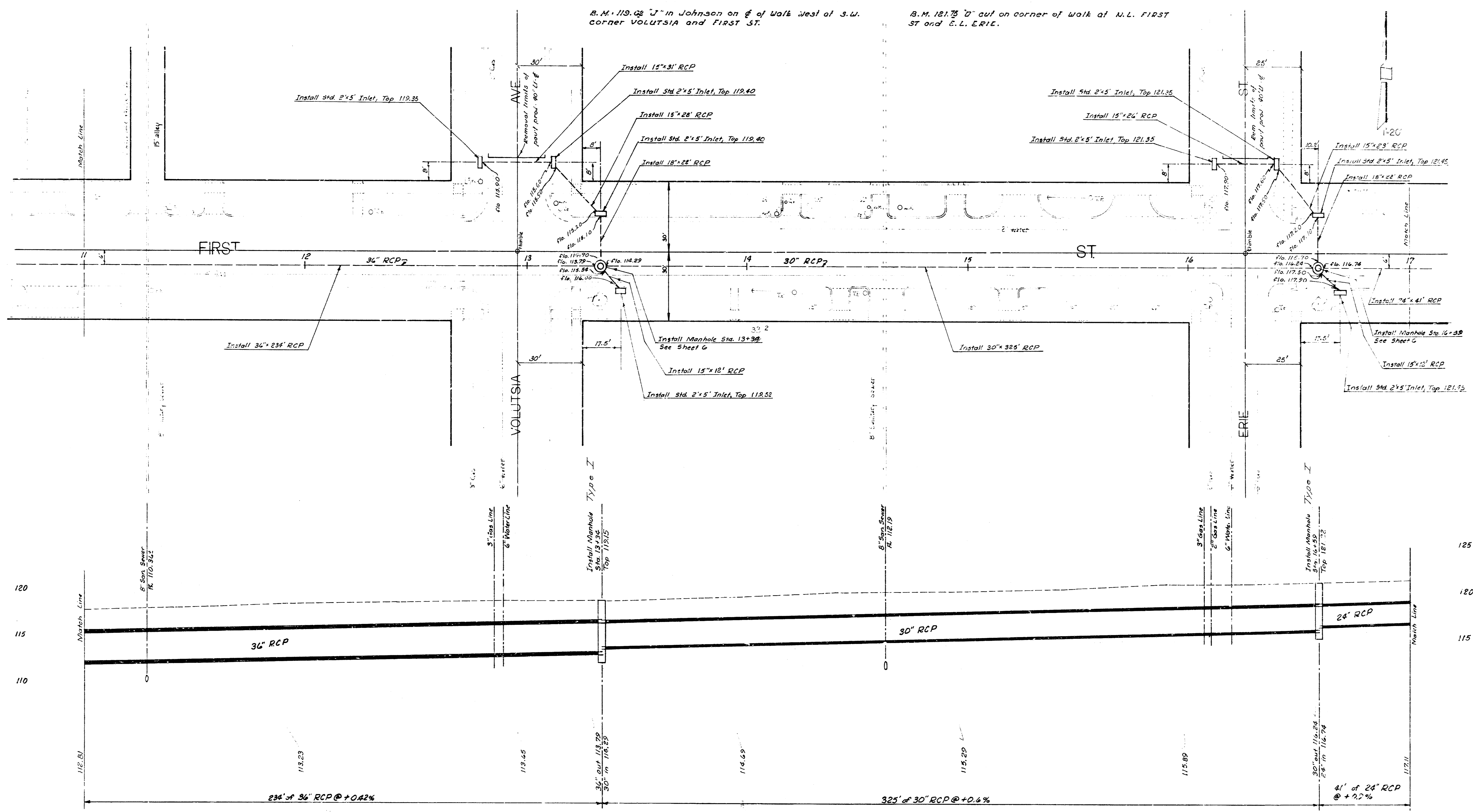
CAUTION
 UNDERGROUND UTILITIES

AS BUILT PER PLAN
 IH-81

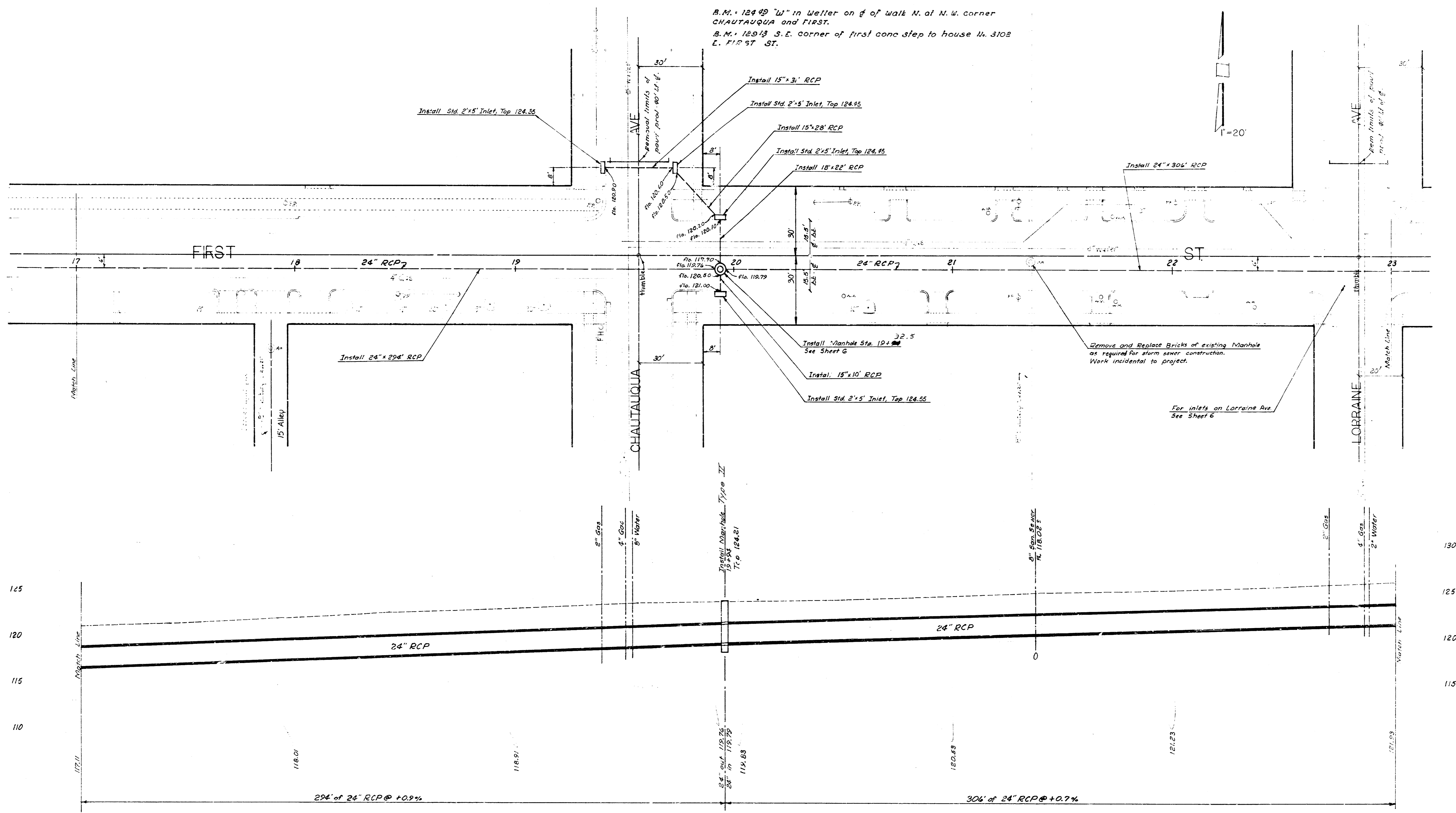
0 1 2 3 4 5

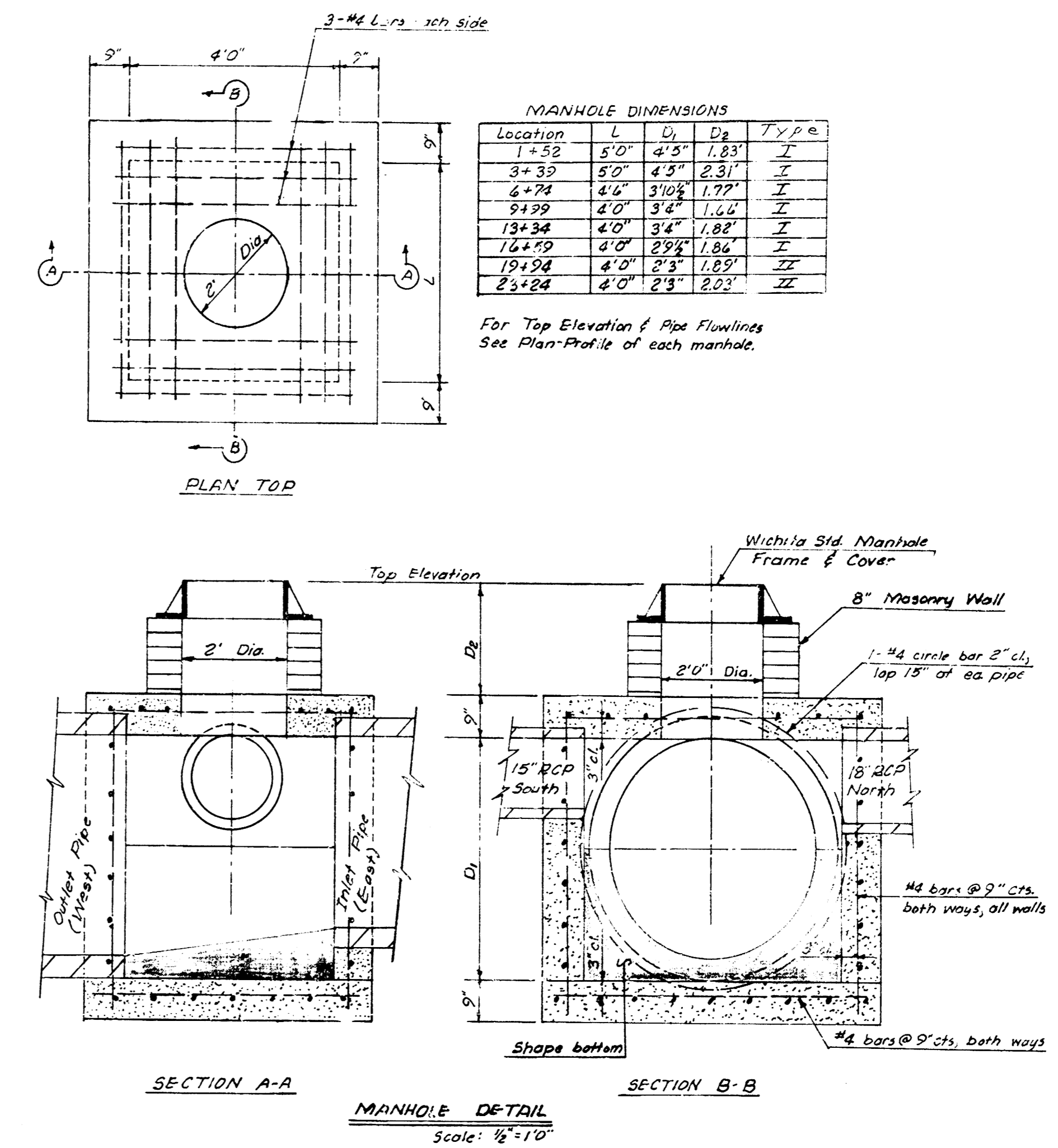
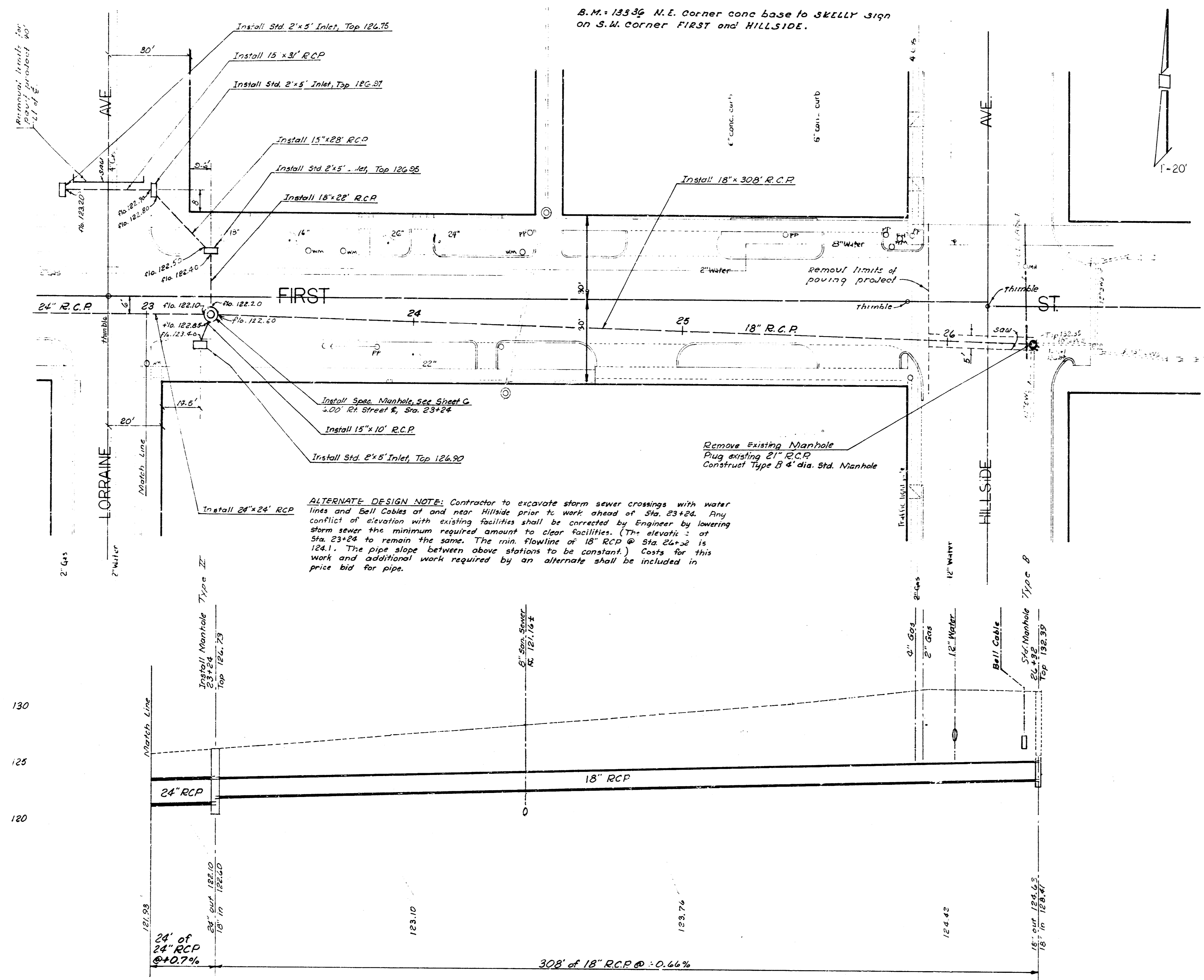
STORM WATER SEWER NO. 105
 Project No. DBKA 573027

Sheet 2 of 11



B.M. 119.02 "J" in Johnson on E of Walk West of S.W. corner VOLUTSIA and First St.
 B.M. 121.75 "D" out on corner of walk at N.L. FIRST ST and E.L. ERIE.



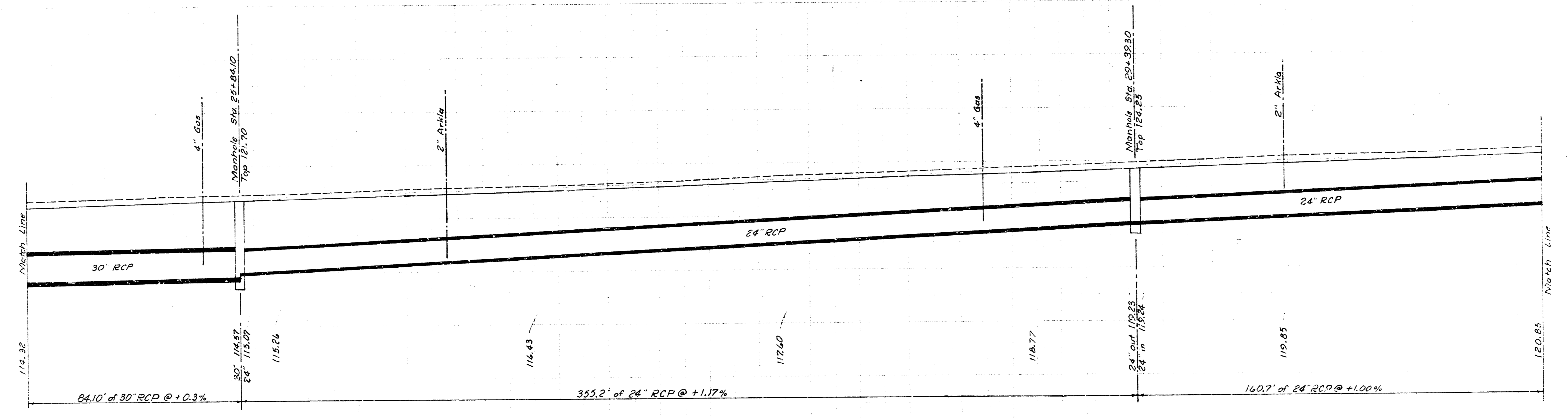
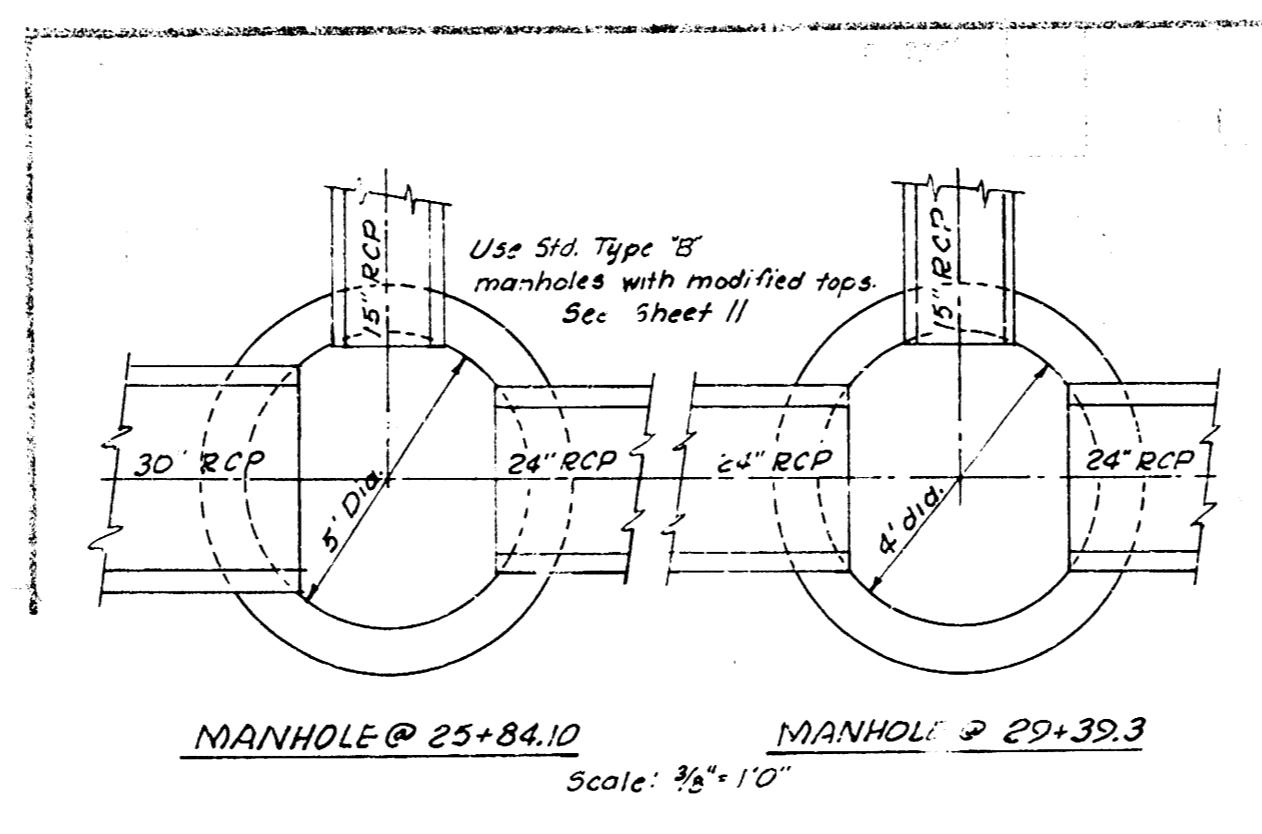
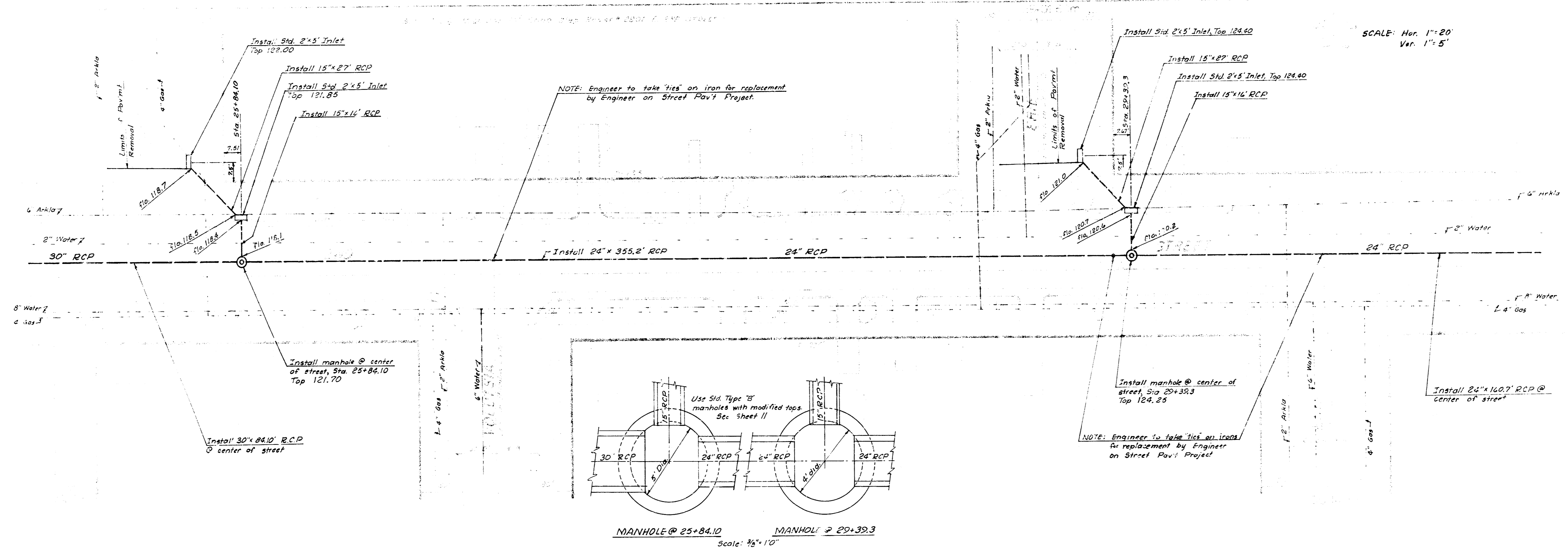


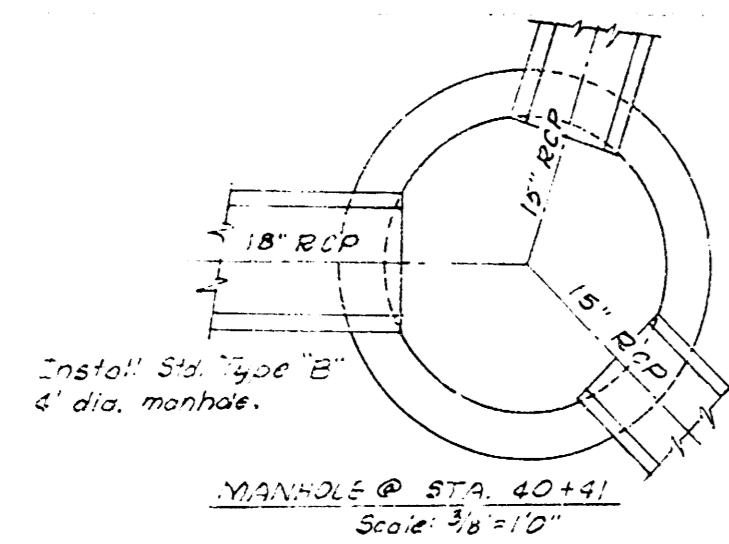
23

24

25

26

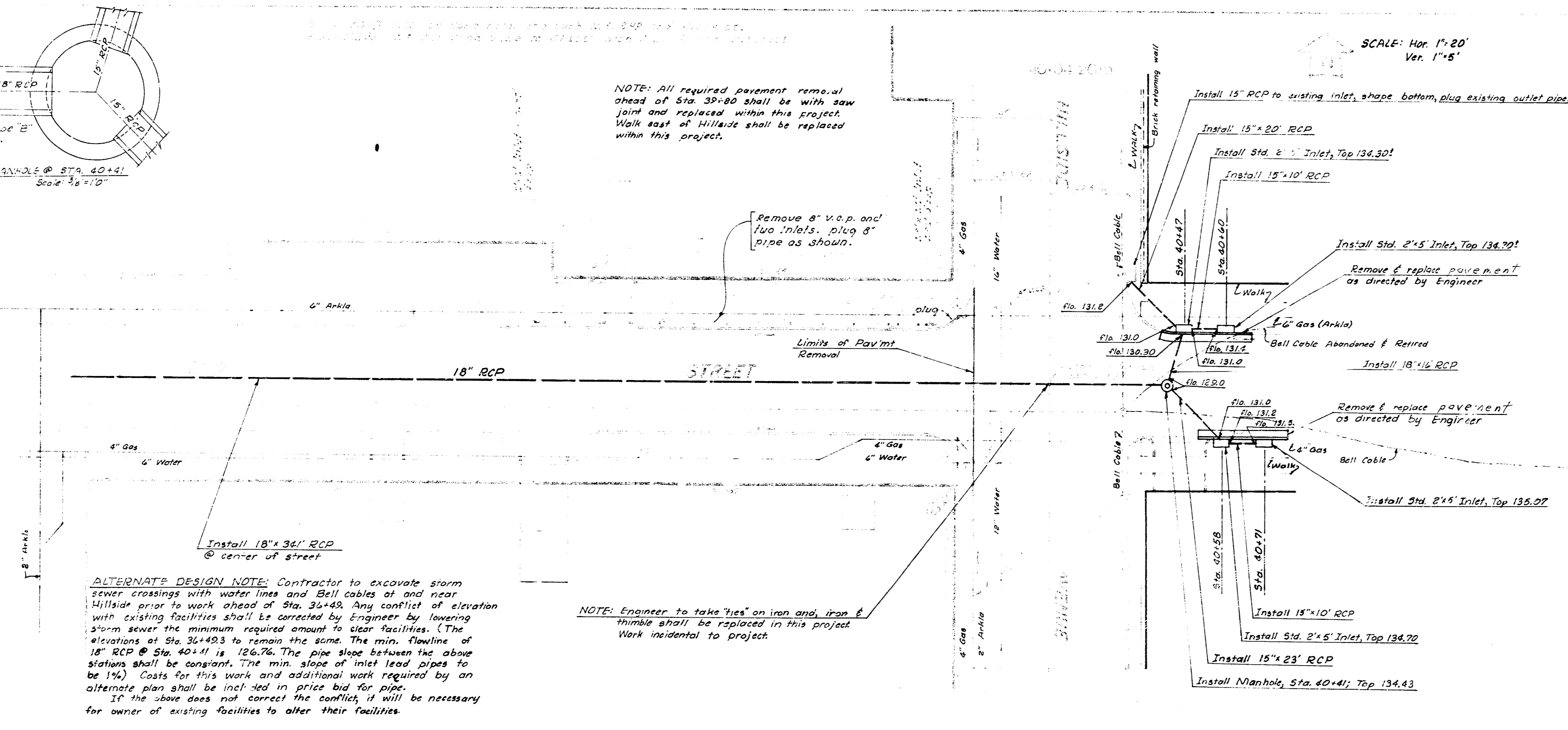




MANHOLE @ STA. 40+41
Scale: 1/4"=1'-0"

NOTE: All required pavement removal ahead of Sta. 39+80 shall be with new joint and replaced within this project. Walk east of Hillside shall be replaced within this project.

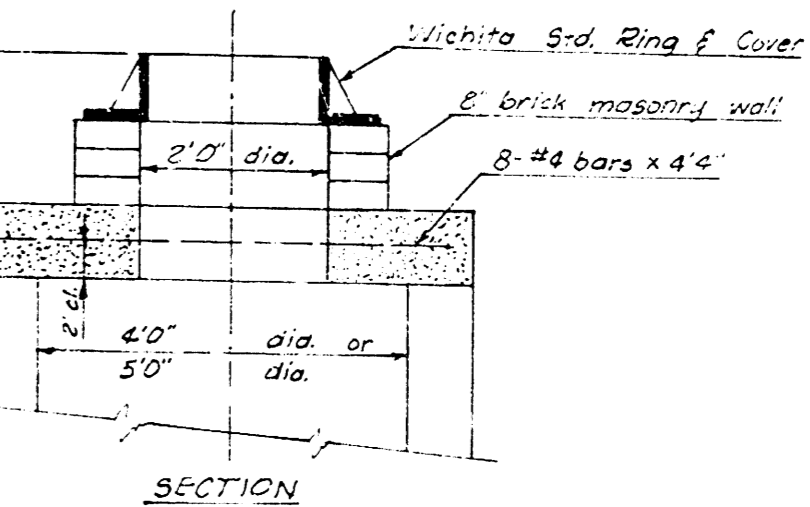
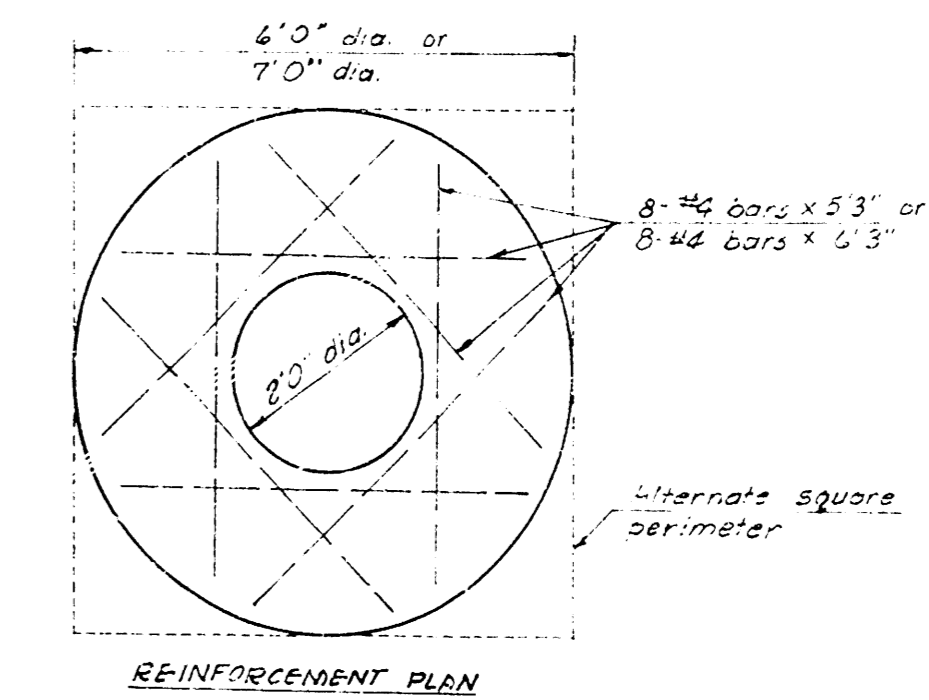
Remove 8" v.e.p. and two inlets, plug 8" pipe as shown.



ALTERNATE DESIGN NOTE: Contractor to excavate storm sewer crossings with water lines and Bell cables at and near Hillside prior to work ahead of Sta. 39+80. Any conflict of elevation with existing facilities shall be corrected by Engineer by lowering storm sewer the minimum required amount to clear facilities. (The elevations of Sta. 39+80's to remain the same. The min. flowline of 18" RCP @ Sta. 40+41 is 126.76. The pipe slope between the above stations shall be constant. The min. slope of inlet lead pipes to be 1%. Costs for this work and additional work required by an alternate plan shall be included in price bid for pipe. If the above does not correct the conflict, it will be necessary for owner of existing facilities to alter their facilities.

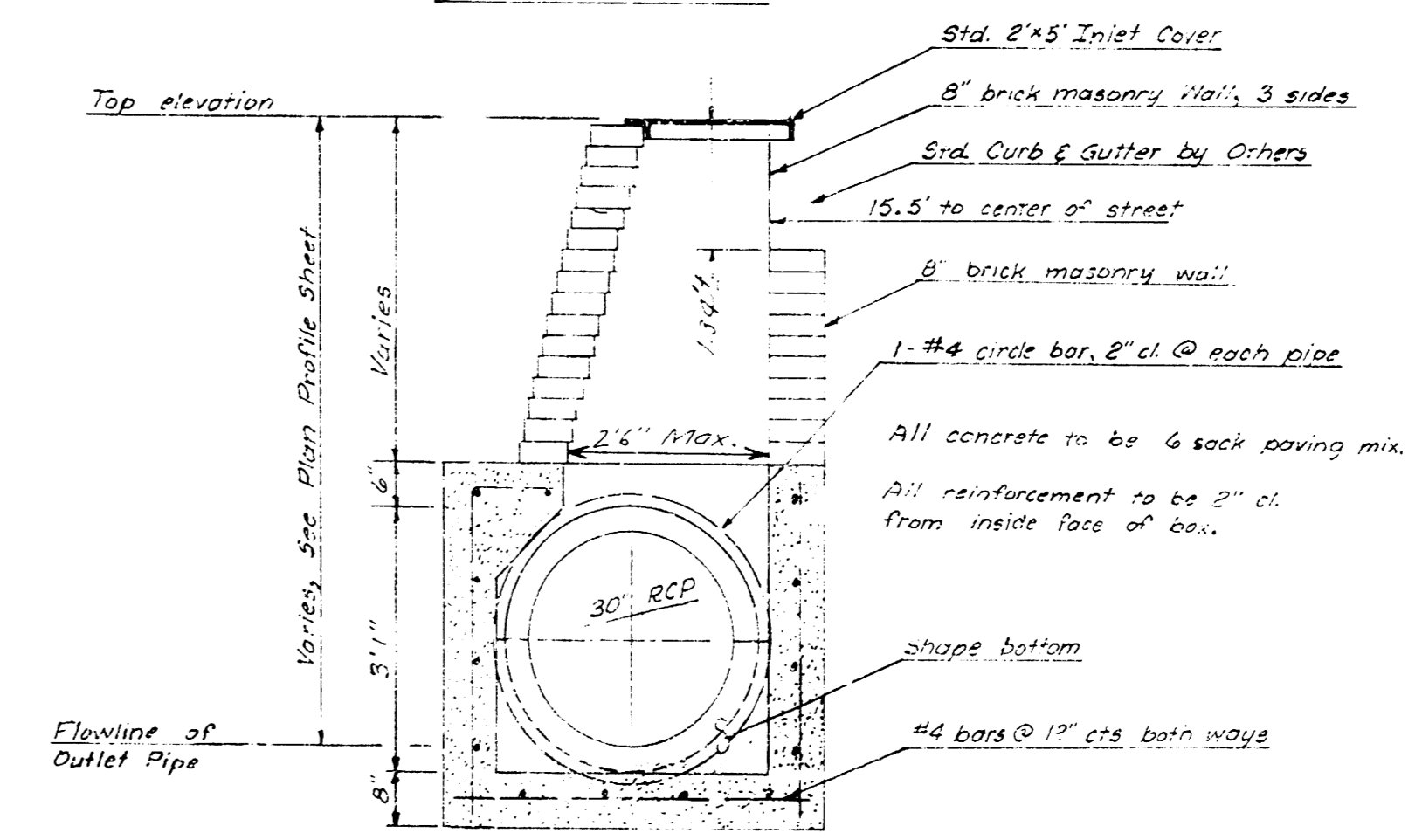
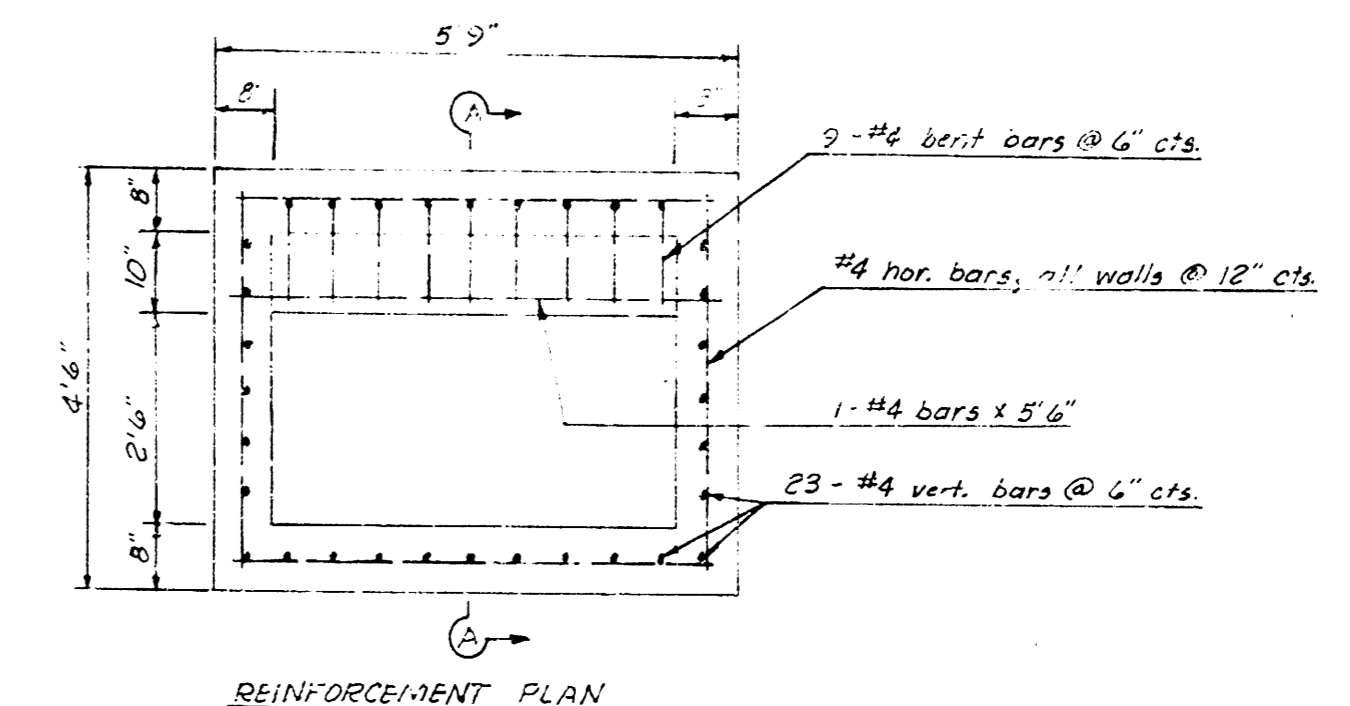
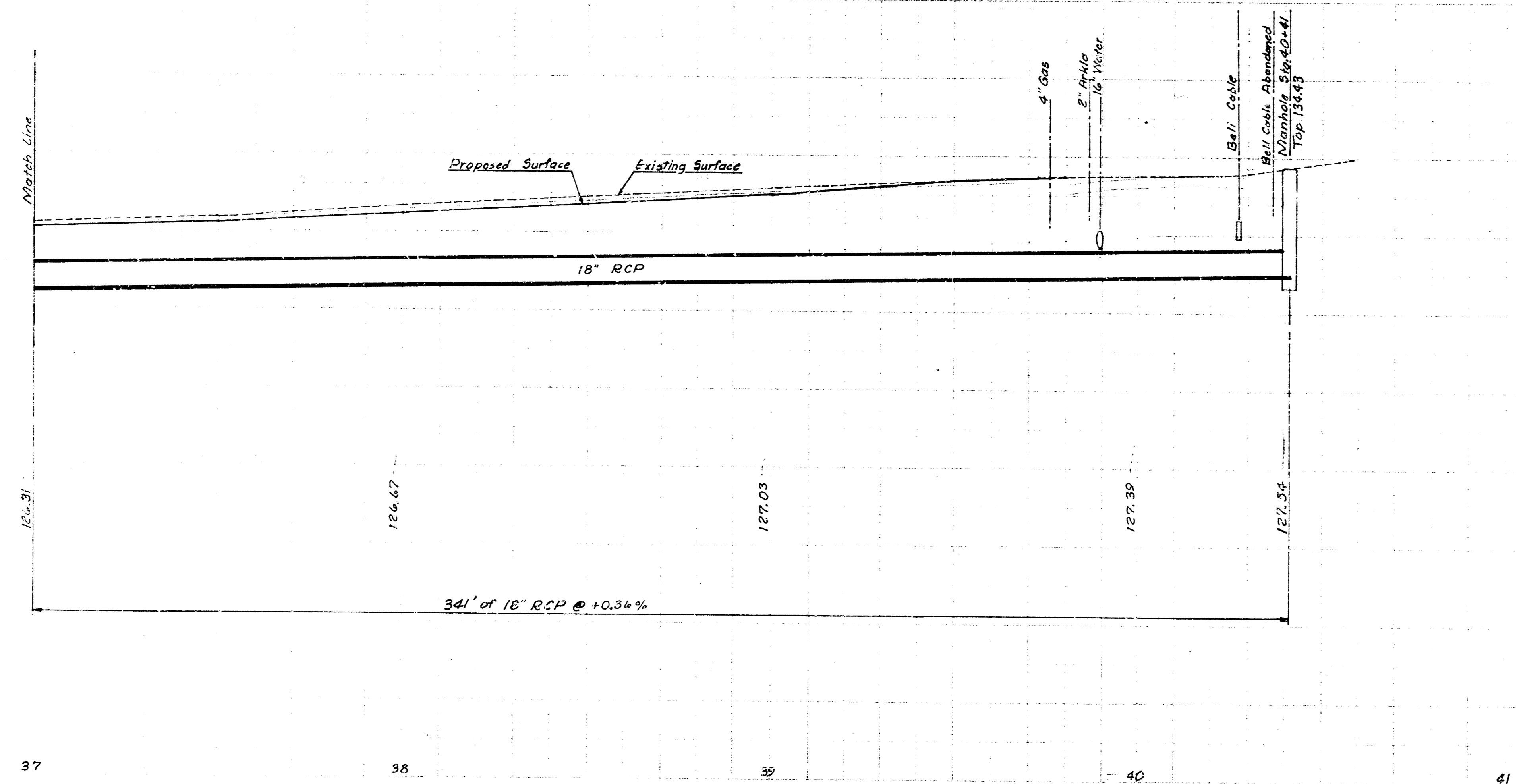
NOTE: Engineer to take ties on iron and iron & thumb shall be replaced in this project. Work incidental to project.

SCALE: Hor. 1"=20'
Ver. 1"=5'



Std. Type "B" MANHOLE MODIFIED
Scale: 1/2"=1'-0"

NOTE: CONTRACTOR SHALL HAVE OFFICE NUMBER 00, NUMBER STANDARD (TYPE B) MANHOLE MODIFIED 28" DIA. BY PLANS OR STANDARD BRICK MANHOLE (TYPE B) WIDE FLANGE MANHOLE RINGS (NO. 500) AS MANUFACTURED BY WESTERN IRON AND FOUNDRY CO., OR AN APPROVED EQUAL, SHALL BE SUBSTITUTED FOR THE STANDARD MANHOLE RING IF THE CONTRACTOR SELECTS THE STANDARD BRICK MANHOLE (TYPE B) OR STANDARD (TYPE B) MANHOLE MODIFIED (5' DIAMETER) OR ALTERNATE STANDARD BRICK MANHOLE (TYPE B) (5' DIAMETER) WITH WIDE FLANGE RING SHALL BE PAID FOR AS MANHOLE TYPE III, STANDARD (TYPE B) MANHOLE MODIFIED (6' DIAMETER) OR ALTERNATE STANDARD BRICK MANHOLE (TYPE B) (6' DIAMETER) WITH WIDE FLANGE RING SHALL BE PAID FOR AS MANHOLE TYPE IV.



SPEG INLET JUNCTION BOX
Scale: 1/2"=1'-0"