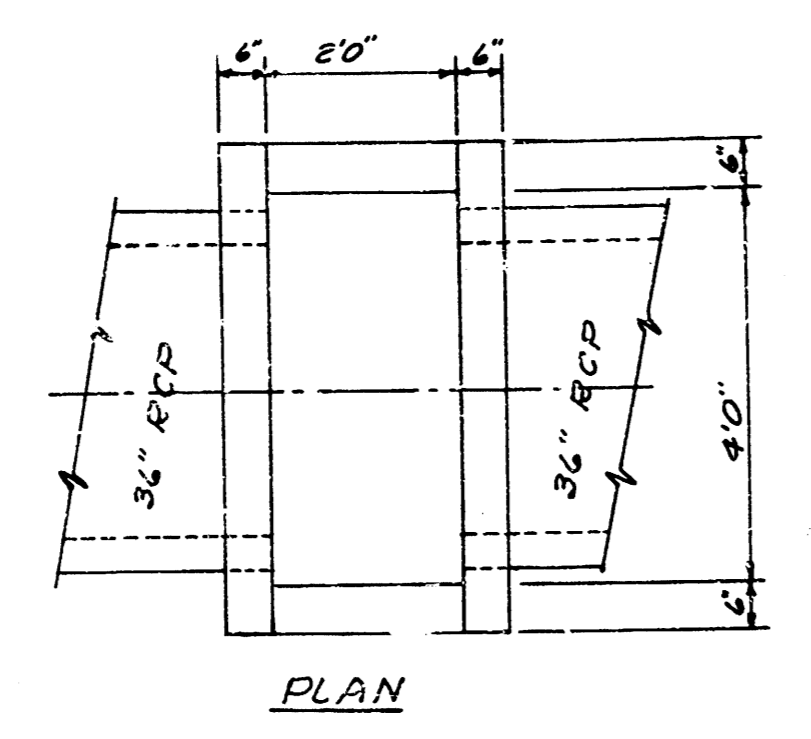
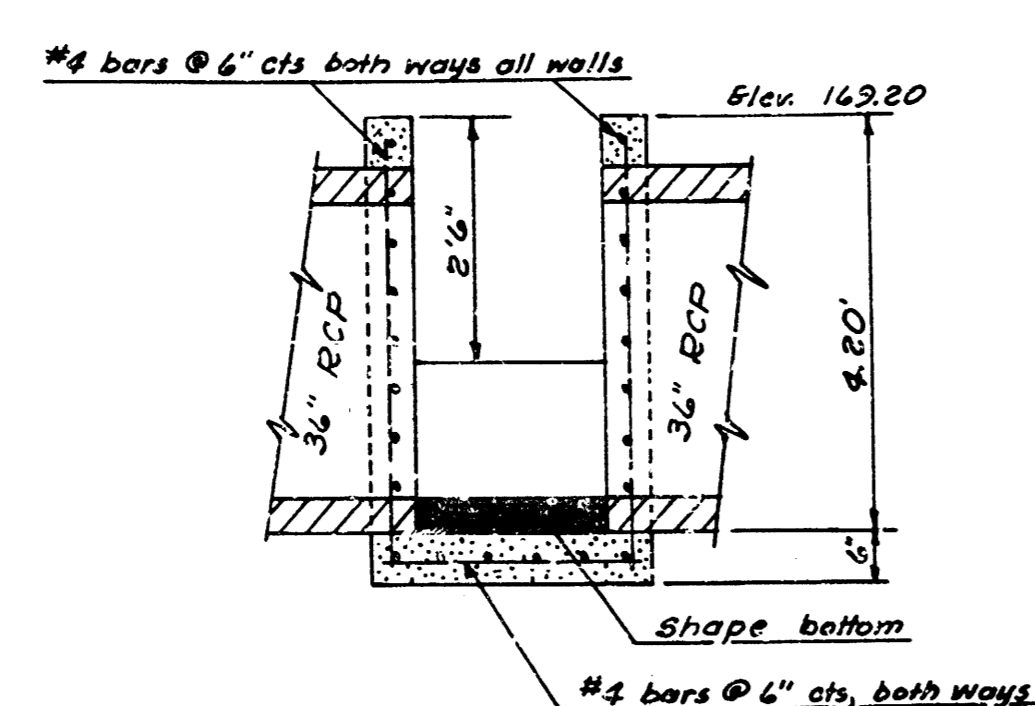


BM 178.16 City Std., 73.4' S. & 31'E. of W Webb Rd. & Kellogg

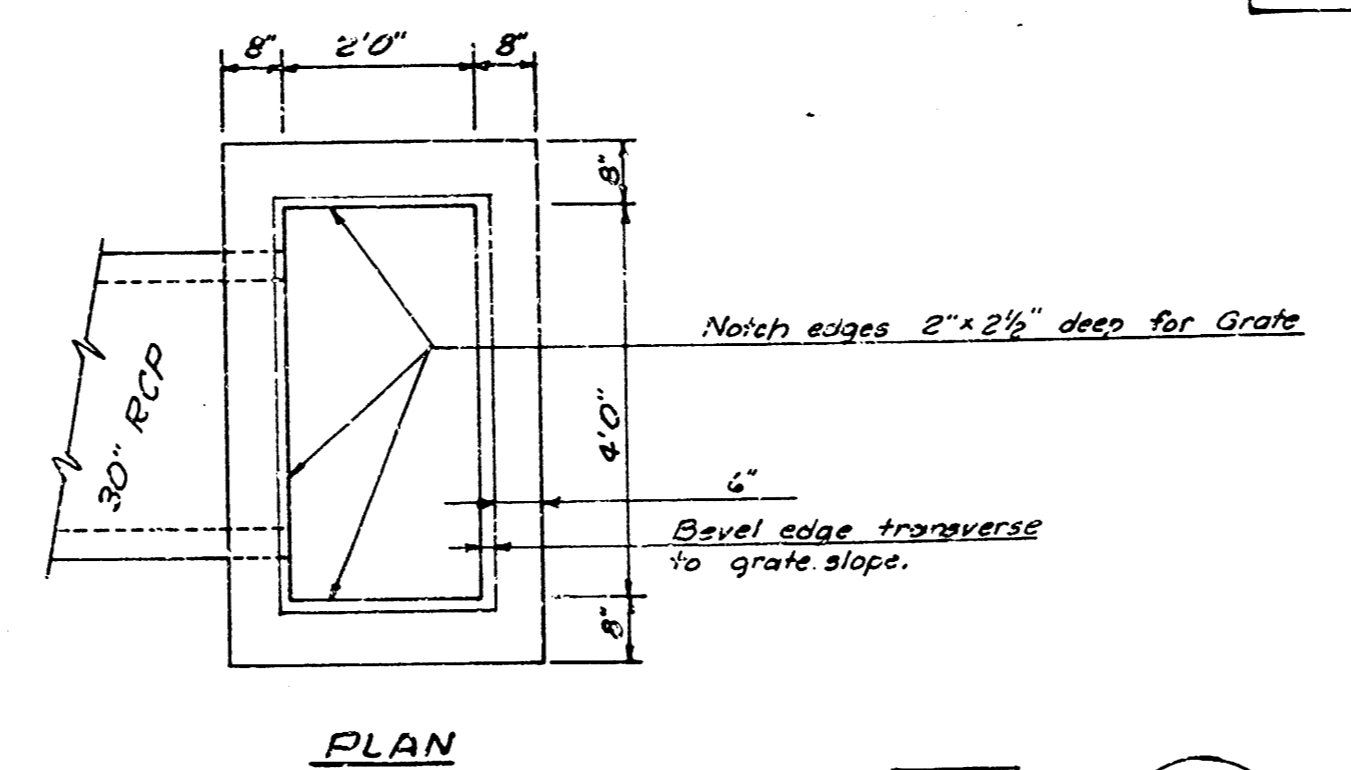


PLAN

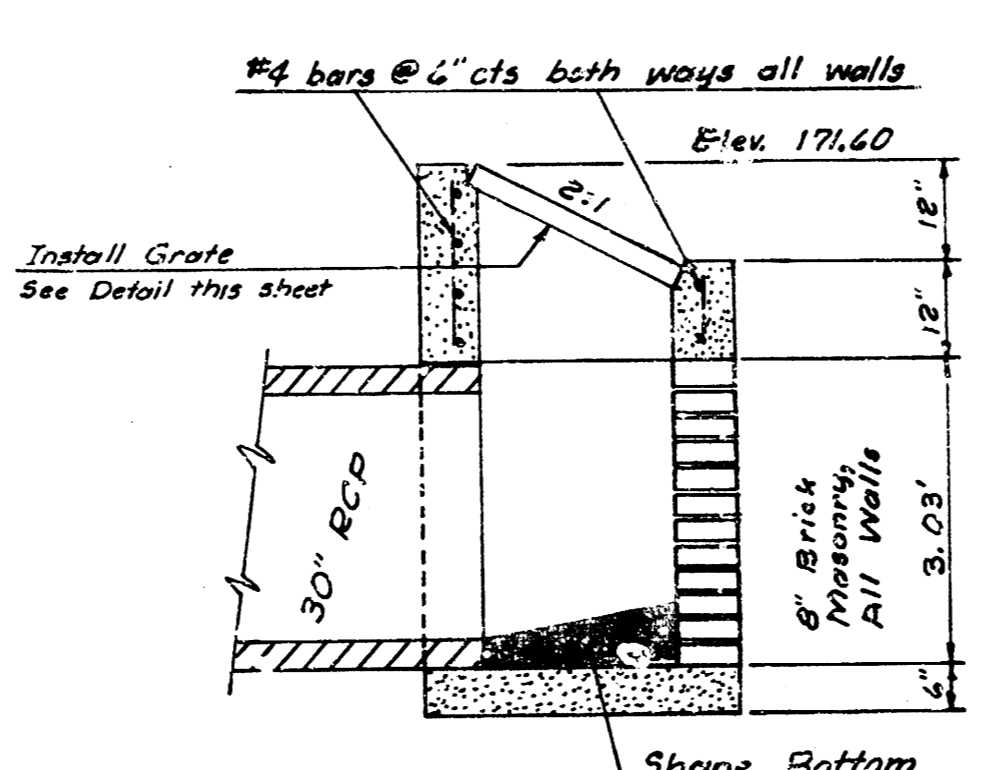


SECTION

SPEC. INLET STA. 1+47  
Scale: 1/8"=1'0"

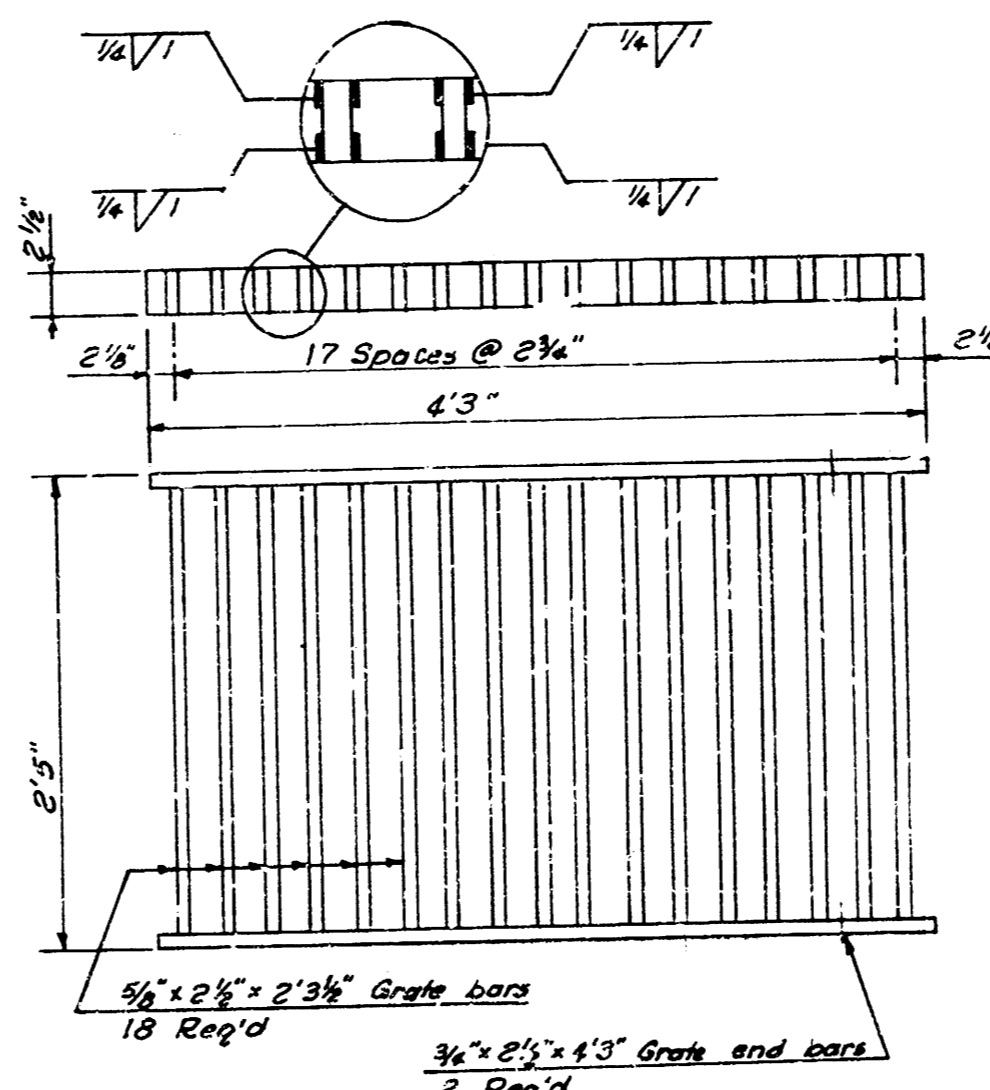


PLAN

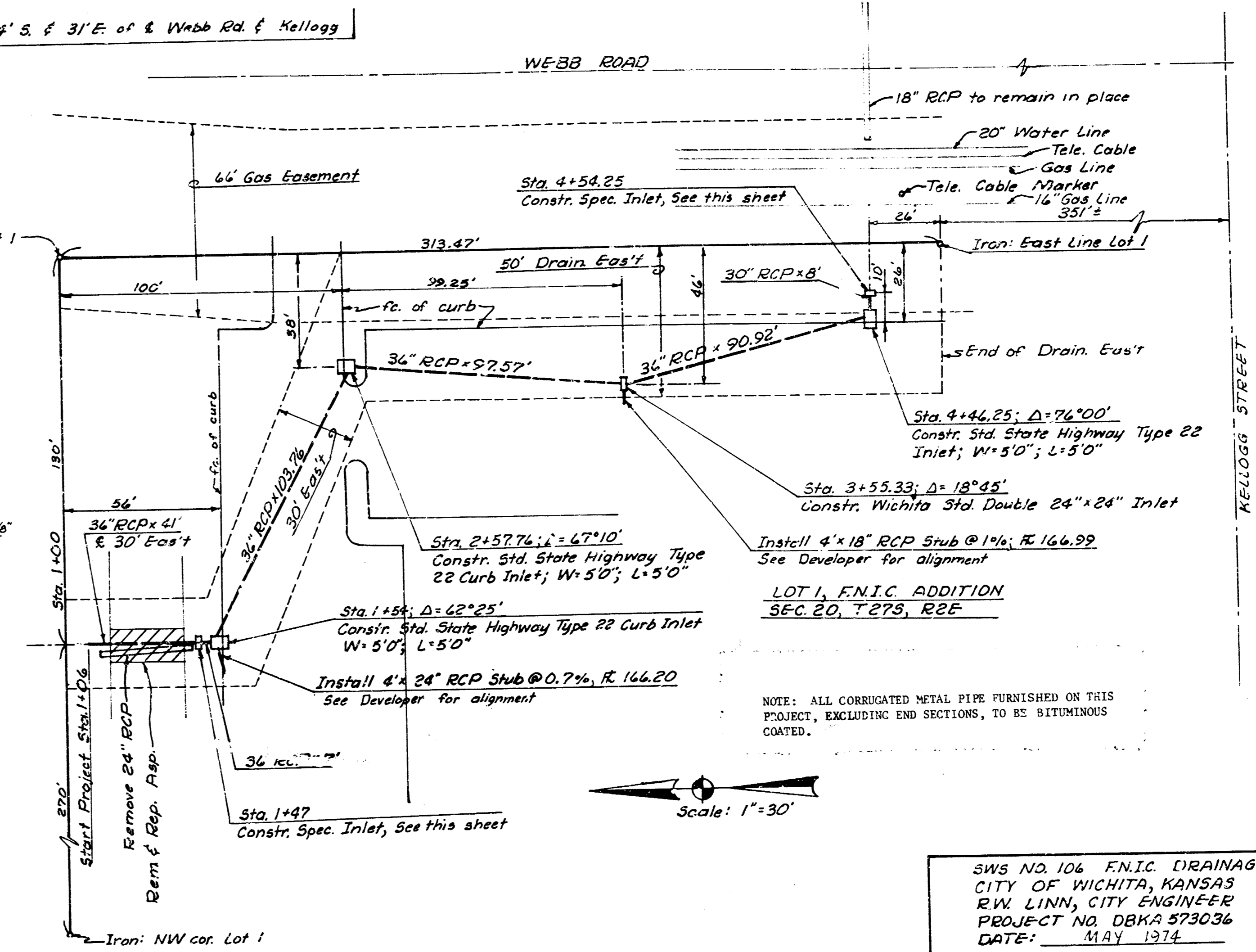


SECTION

SPEC. INLET STA. 4+56.25  
Scale: 1/8"=1'0"



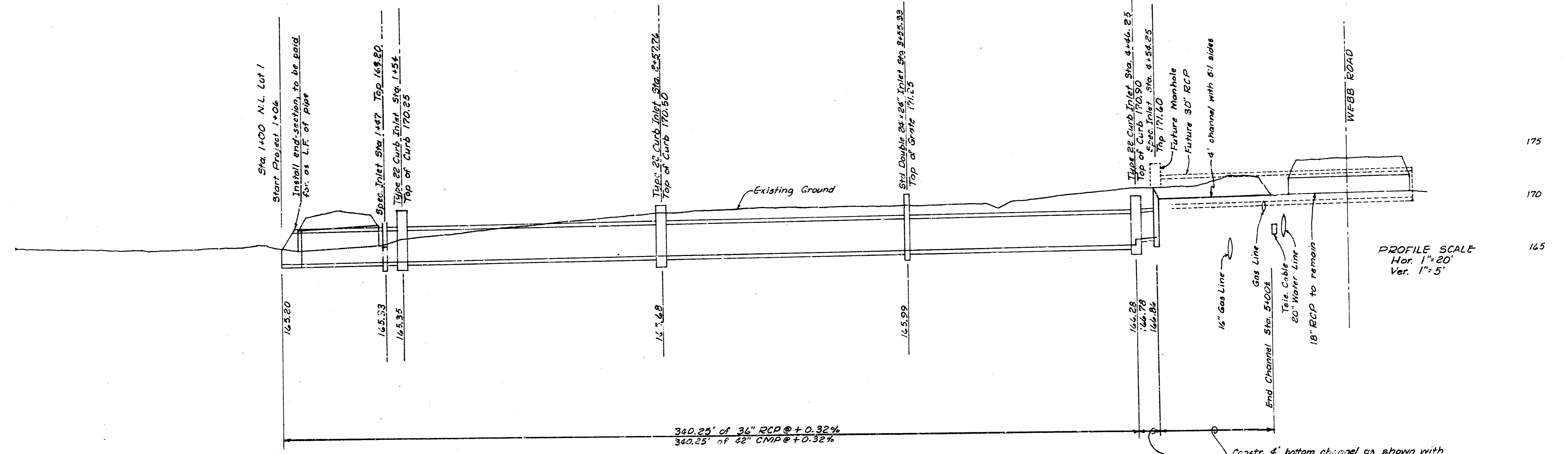
WELDED STRUCTURAL STEEL GRATE  
Weight: 36.4 lbs.



Scale: 1"=30'

NOTE: ALL CORRUGATED METAL PIPE FURNISHED ON THIS PROJECT, EXCLUDING END SECTIONS, TO BE SITUOUSLY GAUGED.

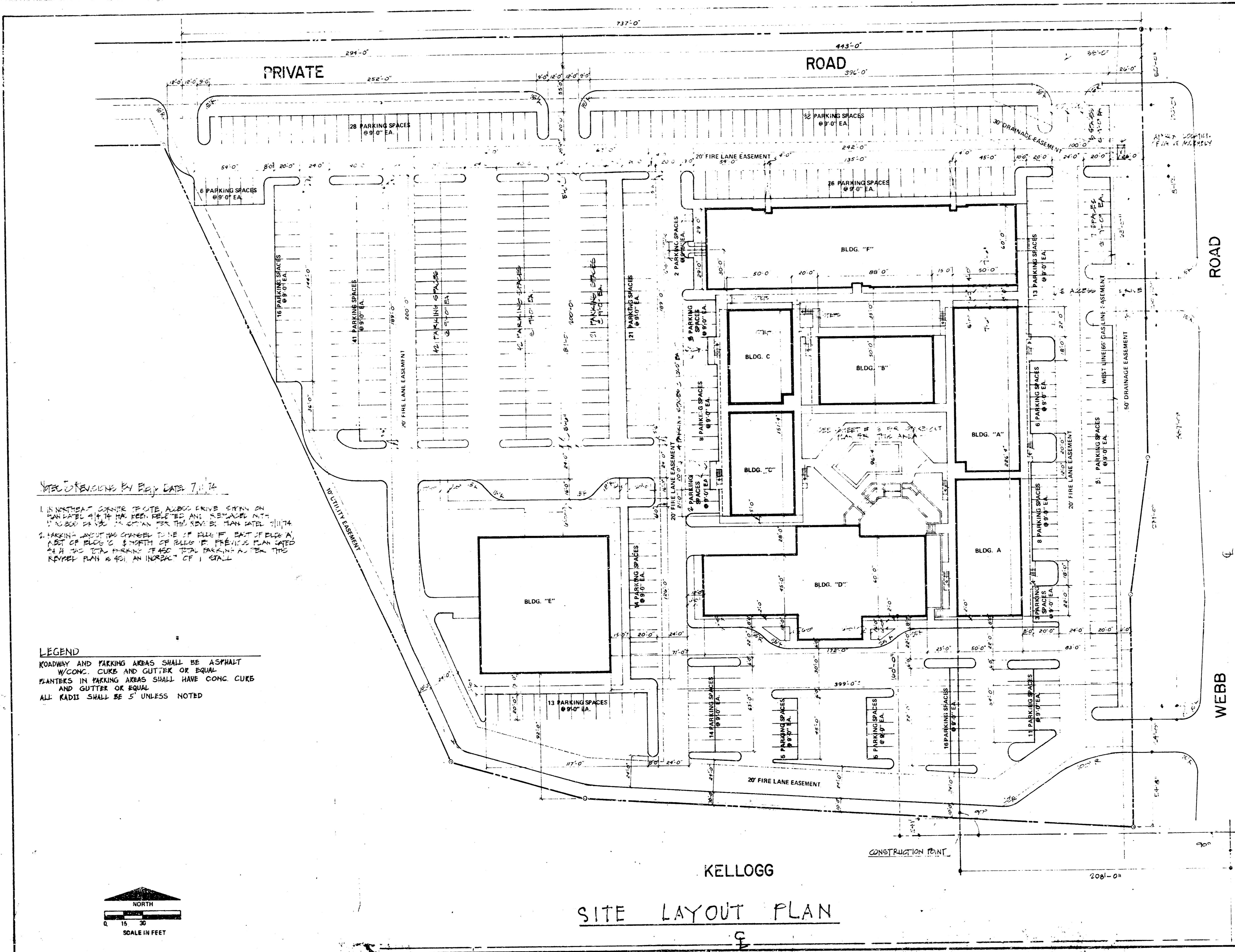
SWS NO. 104 F.N.I.C. DRAINAGE  
CITY OF WICHITA, KANSAS  
R.W. LINN, CITY ENGINEER  
PROJECT NO. DBKA 573036  
DATE: MAY 1974



PROFILE SCALE  
Hor. 1"=20'  
Ver. 1"=5'







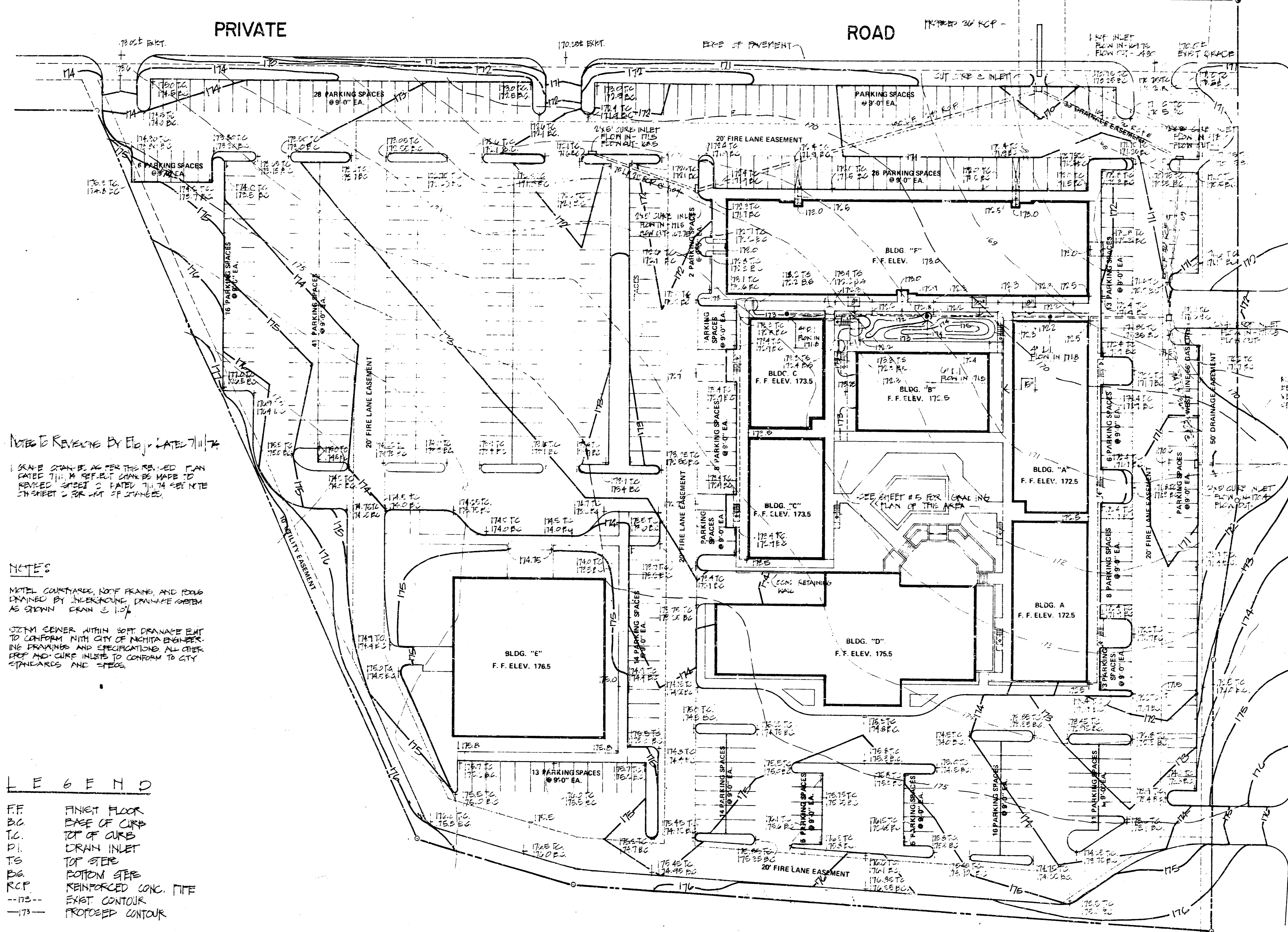
NOTE REVISIONS BY FIELD DATE 7/1/74

1. IN NORTHWEST CORNER TO SITE ALONG DRIVE STRIP ON SANITARY MAIN W/ CONC. CURB AND GUTTER AND 10' WIDE DRIVE STRIP FOR THE DRIVE BY PLAN LATE 1974
2. PARKING SPACES CHANGED TO NE OF BLDG. "F" EAST OF BLDG. "A" WEST OF BLDG. "C" & NORTH OF BLDG. "E" PREVIOUS PLAN CATED 2/4/74 HAS TOTAL PARKING OF 450 TOTAL PARKING AS PER THE REVISION PLAN IS 451 AN INCREASE OF 1 STALL

**LEGEND**  
 ROADWAY AND PARKING AREAS SHALL BE ASPHALT  
 W/ CONC. CURB AND GUTTER OR EQUAL  
 PLANTERS IN PARKING AREAS SHALL HAVE CONC CURB  
 AND GUTTER OR EQUAL  
 ALL RADII SHALL BE 5' UNLESS NOTED

REVISIONS	DATE	BY
DESIGNER	ENGINEERING	CHECKED BY
NED BLAKE	P. D. PRICE	
PROJECT		
F. N. C. DEVELOPMENT		
SHEET TITLE	DATE	SHEETS
LAYOUT PLAN	MARCH 22, 1974	2 OF 11
CONSULTANTS IN PLANNING DESIGN AND DEVELOPMENT 625 First National Bank Building Wichita, Kansas 67202		

3/5



NOTED REVISIONS BY E.D. LATE 7/1/74

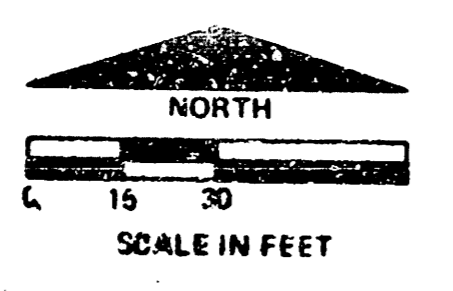
GRADE CAN BE AS PER THE REVISED PLAN SAID TO BE BUT CAN BE MADE TO REVISION SHEET 2 DATED 7/1/74 SEE NOTE ON SHEET 2 FOR LIST OF CHANGES.

NOTES

NOTE COURTYARDS, ROOF FRAMES, AND ROOFS DRAINAGE BY UNDERGROUND DRAINAGE SYSTEM AS SHOWN EXAM 2 11/74

NOTE CENTER WITHIN 50' DRAINAGE EASEMENT TO CONFORM WITH CITY OF MOBILE ENGINEERING DRAWINGS AND SPECIFICATIONS ALL OTHER ERECTION AND CURB INLETS TO CONFORM TO CITY STANDARDS AND SPECS.

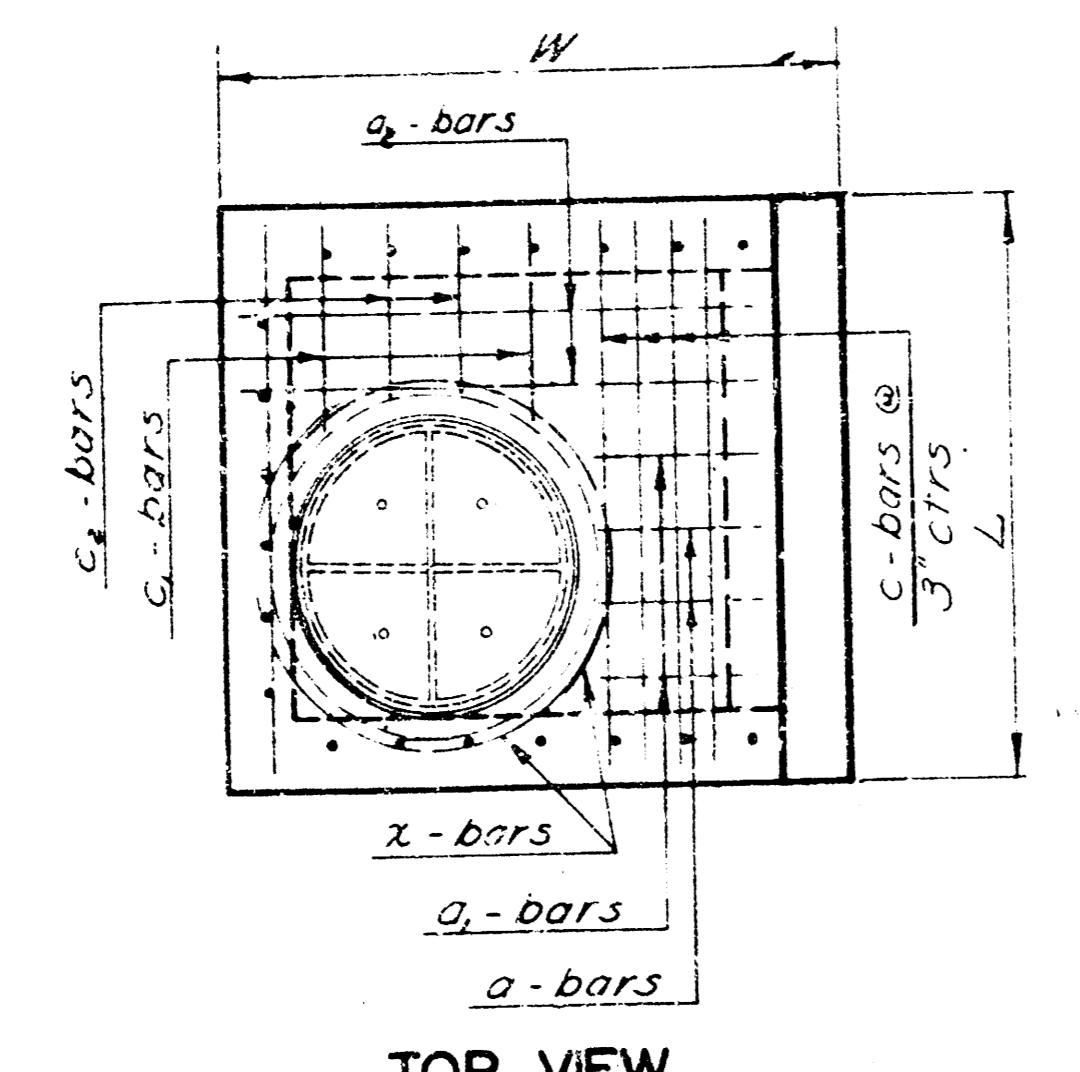
- LEGEND
- FF FINISH FLOOR
  - B.C. BASE OF CURB
  - T.C. TOP OF CURB
  - P.I. DRAIN INLET
  - T.S. TOP STEPS
  - B.S. BOTTOM STEPS
  - R.C.P. REINFORCED CONC. PIPE
  - - - - EXIST. CONTOUR
  - - - - PROPOSED CONTOUR



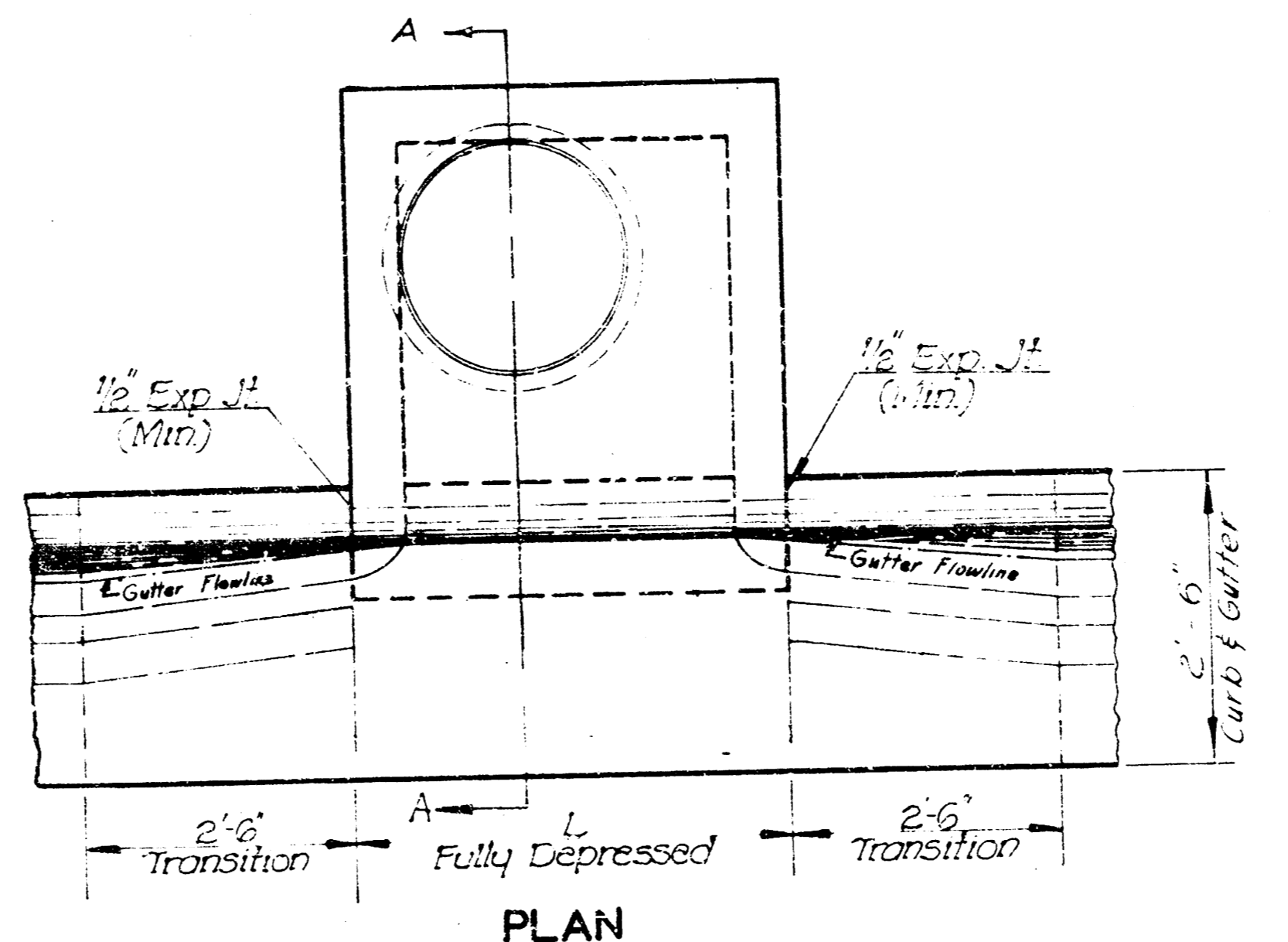
KELLOGG  
SITE GRADING PLAN

REVISIONS	DATE	BY
DESIGNER	NEED BLAKE	
ENGINEERING TECHNICIAN	P. D. PRICE	
CHECKED BY		
SHEET TITLE	GRADING PLAN	
PROJECT	F. N. I. C. DEVELOPMENT	
SHEET NUMBER	4	OF 11 SHEETS
DATE	MARCH 22, 1974	
oblinger-smith corporation Consultants in Planning Design and Development Wichita, Kansas 67202		

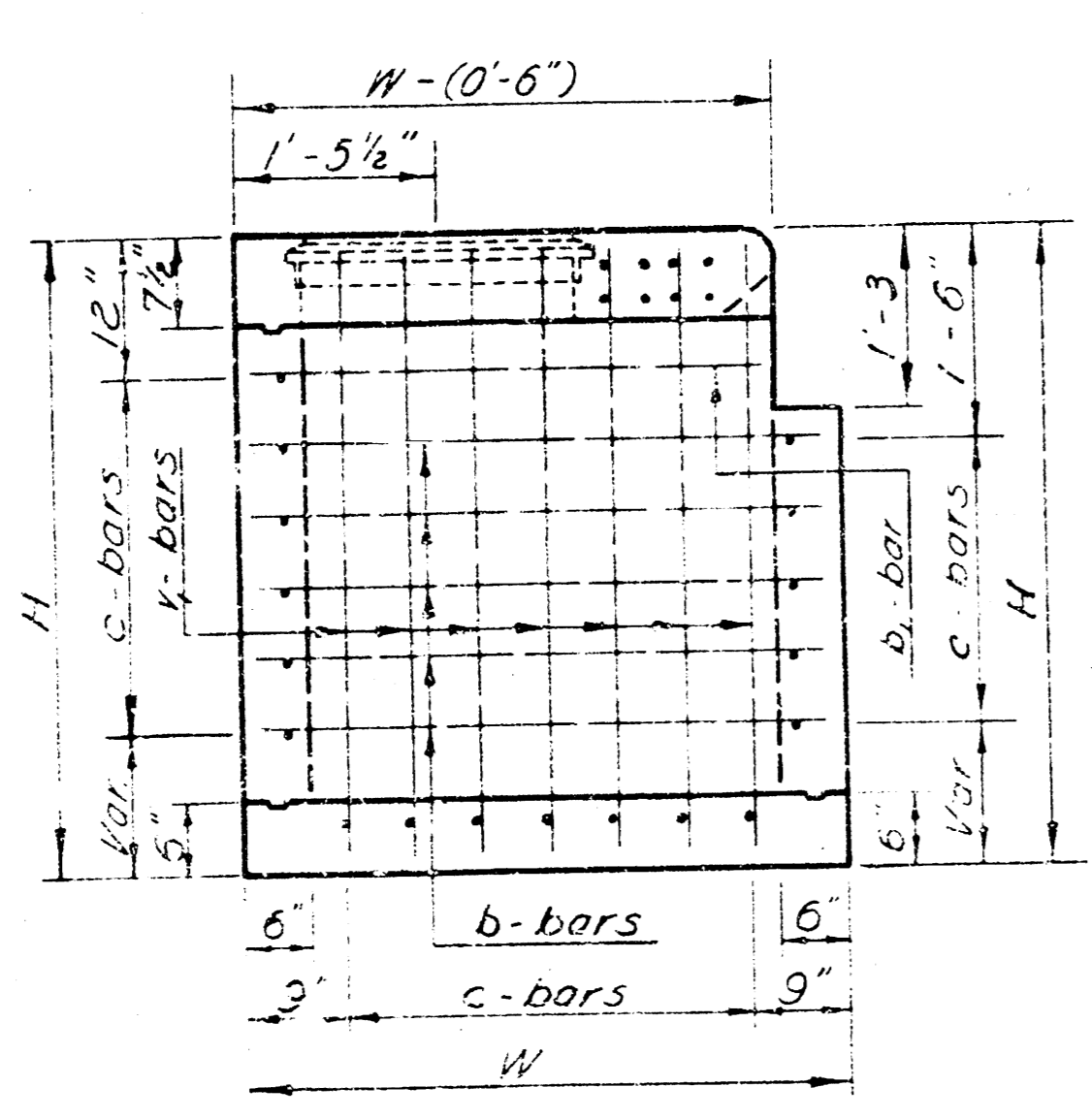
FIRM NO.	STATE	PROJECT NO.	YEAR	SHEET NO.	TOTAL SHEETS
7	KANSAS		19		



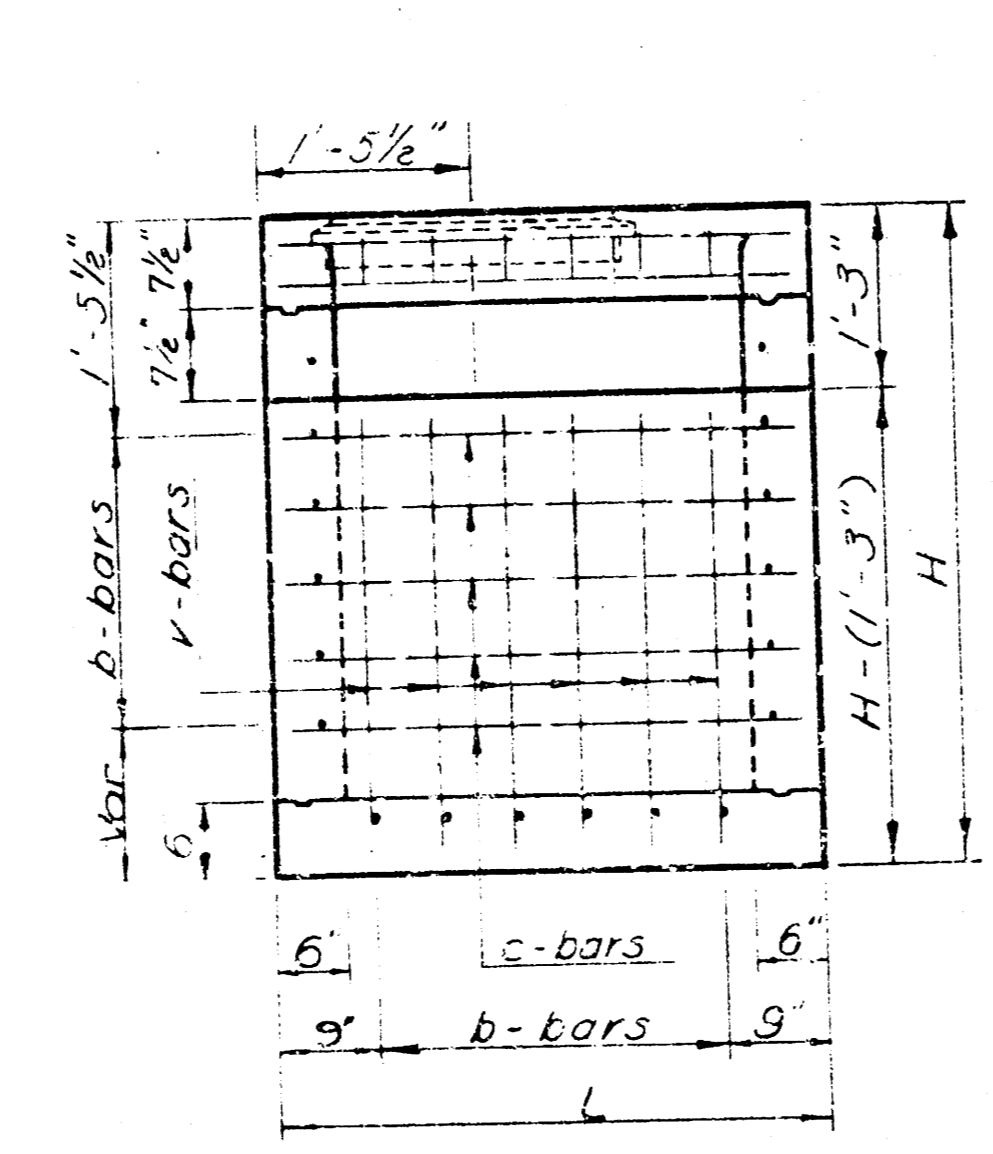
TOP VIEW



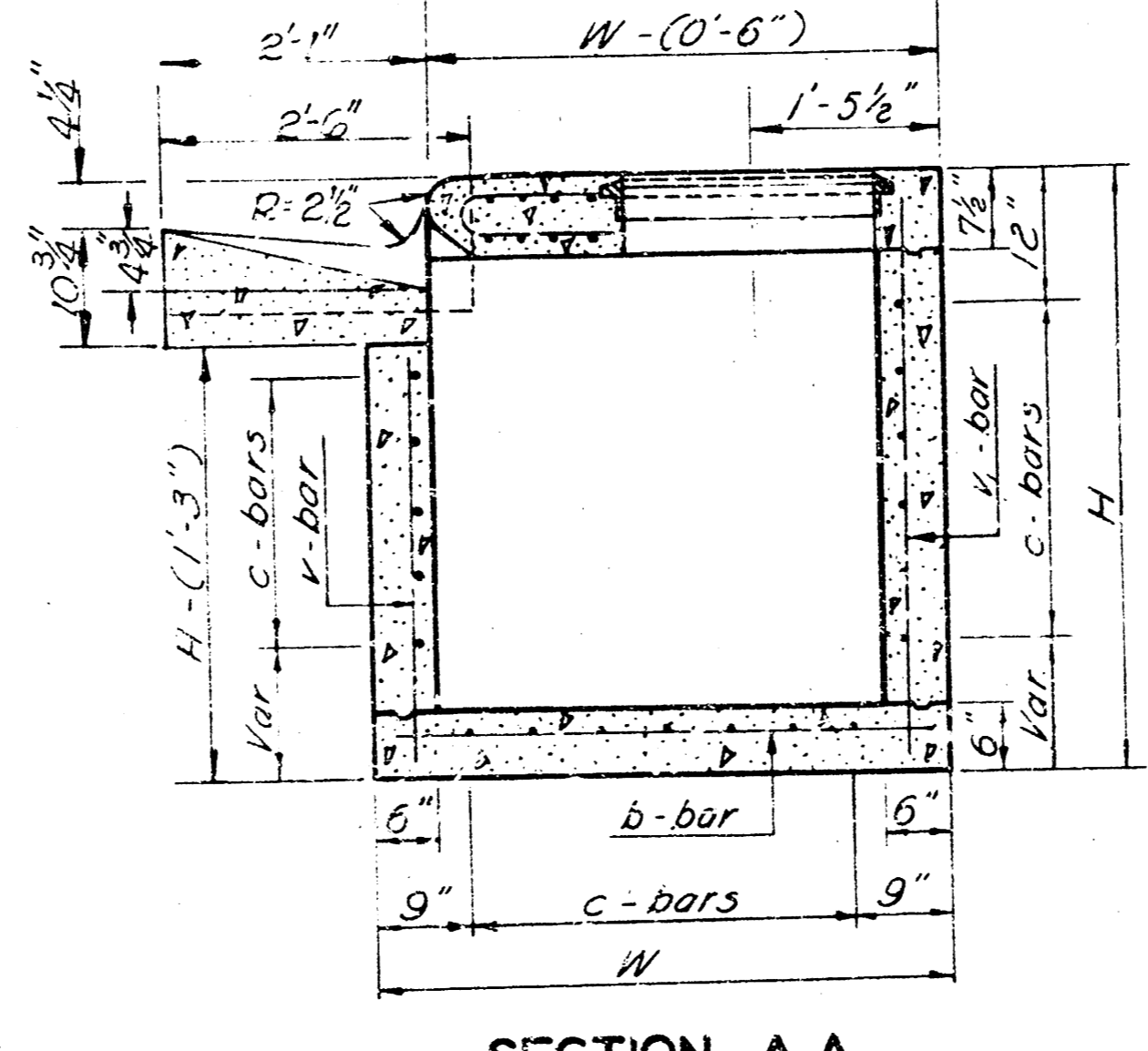
PLAN



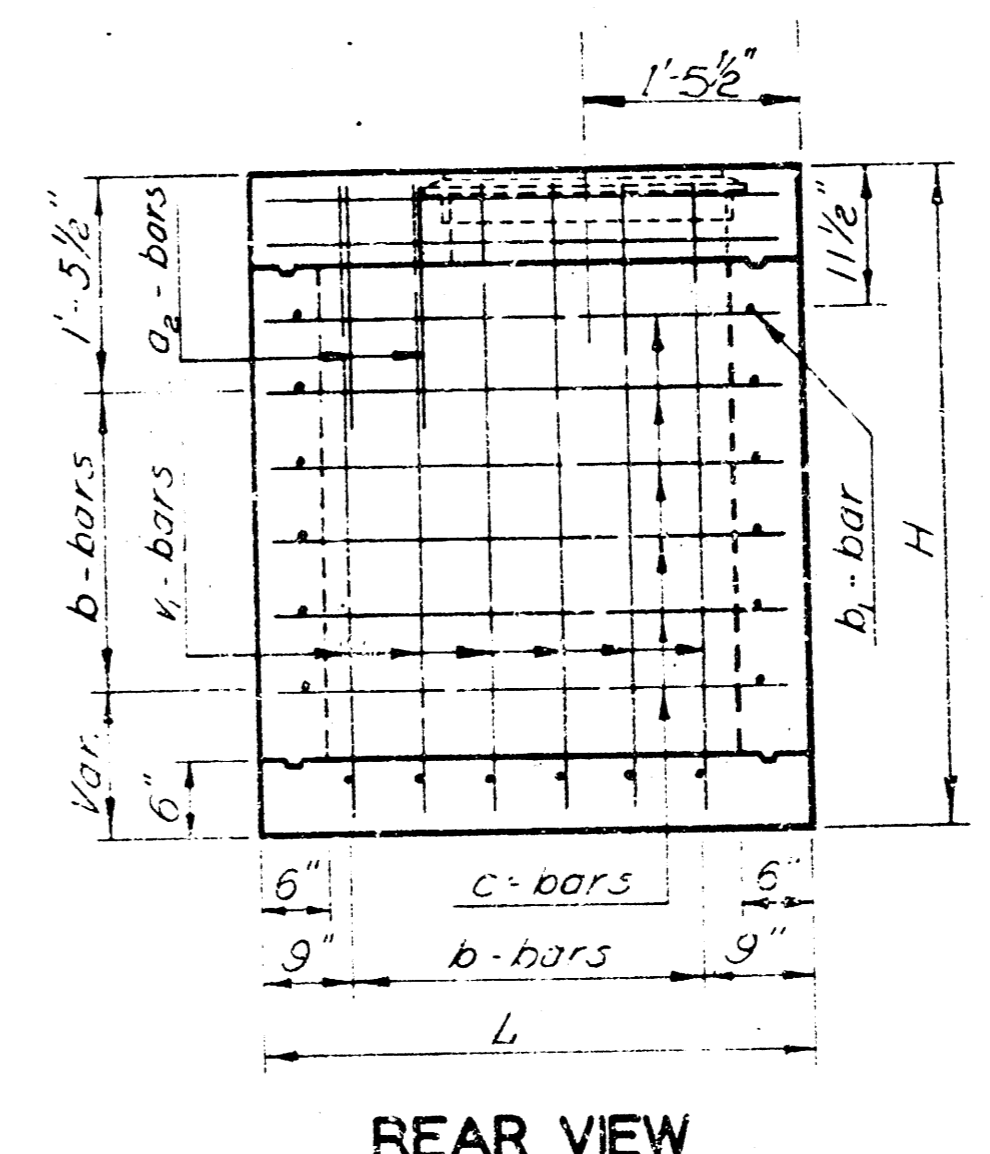
SIDE VIEW



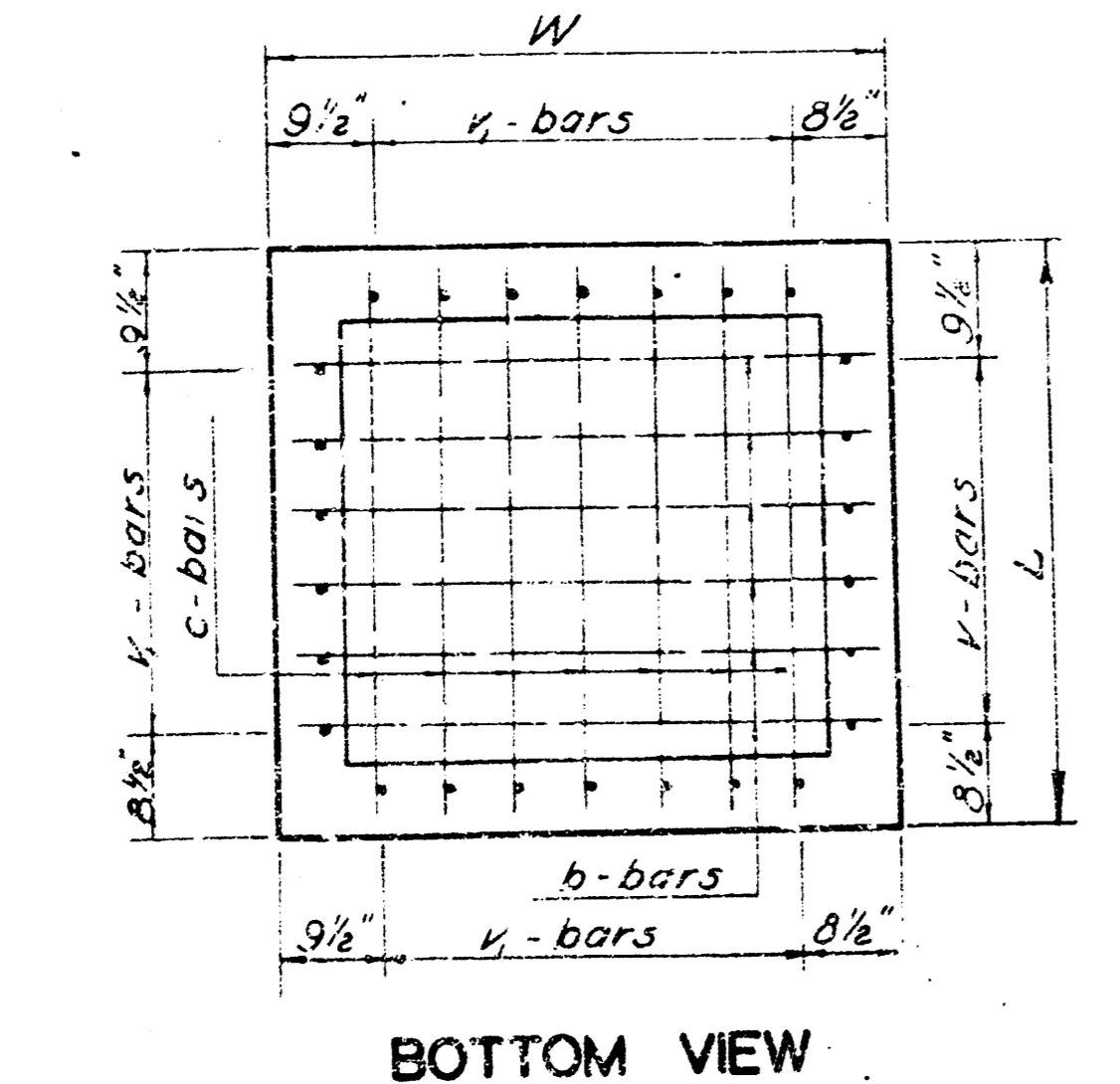
FRONT VIEW



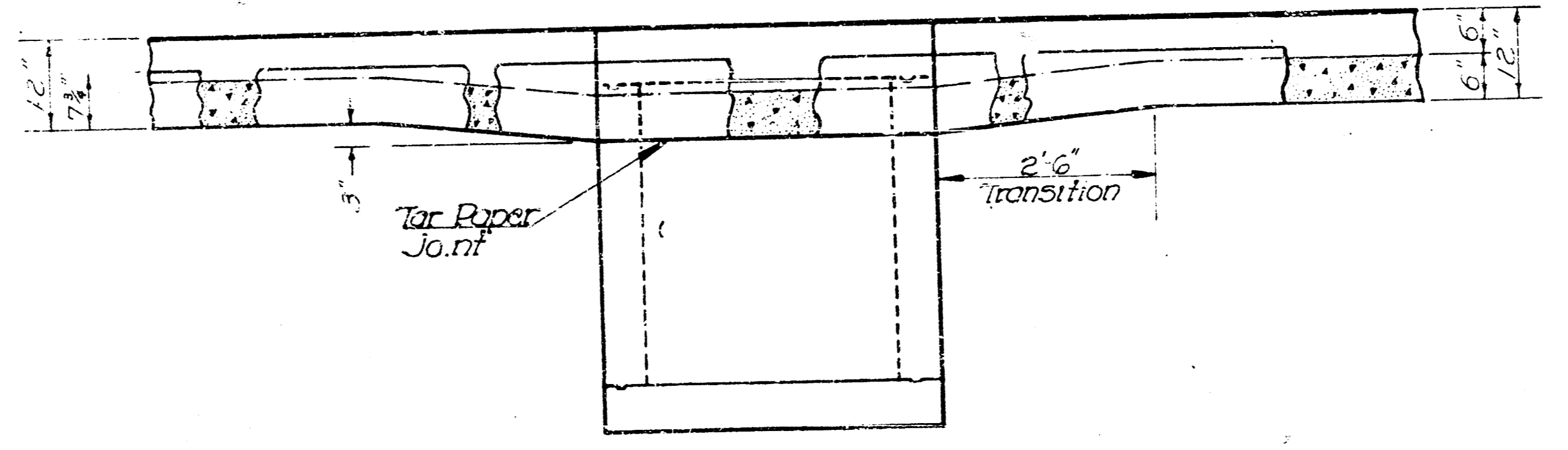
SECTION A-A



REAR VIEW



BOTTOM VIEW



GENERAL NOTE

**CONCRETE**  
Storm Sewer Inlets shall be constructed of either Class A Concrete or Class A Concrete (A E) at the Contractor's option.  
Level all exposed 90° concrete edges with a 3/4" triangular bevel.

**REINFORCING STEEL**  
All dimensions relative to reinforcing steel are to the center of bars unless otherwise noted on the plans.  
Reinforcing steel shall be spaced at 6" centers and shall be 1-1/2" clear distance from slab surfaces unless otherwise shown on the plans.  
All reinforcing steel shall be placed within ± 1/4" of plan dimension unless directed by the Engineer.  
Reinforcing steel shall be bent around all pipes unless otherwise directed by the Engineer.  
All reinforcement bars are No. 4 bars.

**MISCELLANEOUS**  
When directed by the Engineer, the top of the inlet shall be sloped in order to match the longitudinal roadway grade, ground line and/or other conditions.  
When directed by the Engineer, small openings may be required in the back of the inlet in order to drain a low area. No deductions in concrete quantities will be made for these openings.

Inlet floors shall be shaped.  
No concrete quantities shall be computed for this work.

TYPE 22 CURB INLET MODIFIED FOR STORM WATER SEWER NO. 106  
INLETS SHALL BE BID AT A UNIT PRICE FOR "TYPE 22 CURB INLET"  
"H" SHALL BE AS REQUIRED FOR CURB AND PIPE FLOWLINE  
GUTTER SHALL BE CONSTRUCTED BY OTHERS

NO.	DATE	REVISIONS	BY	APP'D.
1				
2				
3				

STATE HIGHWAY COMMISSION OF KANSAS

**TYPE 22 CURB INLET**

SHEET NO.	OF	SCALE	APP'D.	QUANTITIES	SPACES