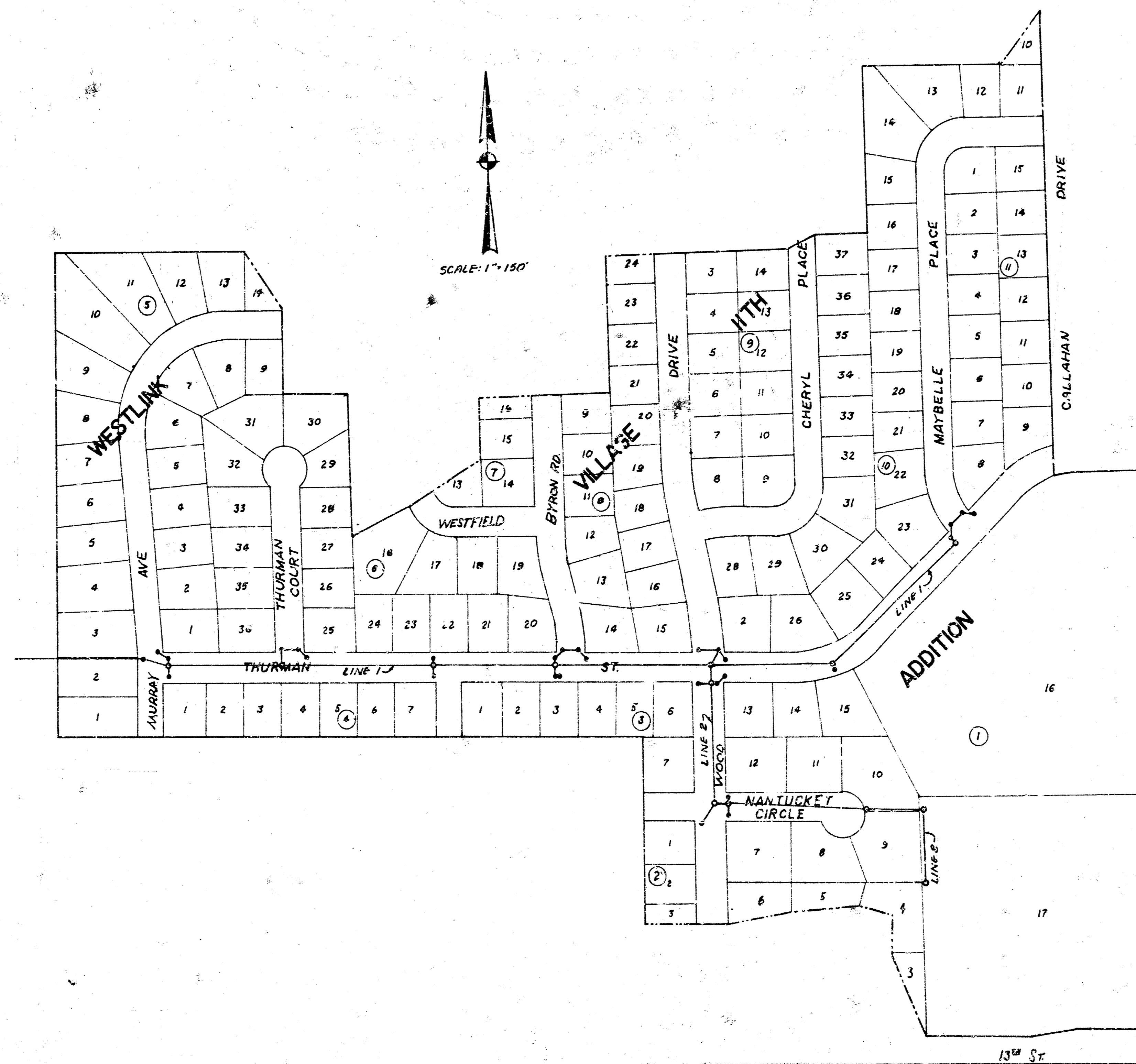


STORM WATER SEWER NO. III

CITY OF WICHITA, KANSAS
R.W. LINN, CITY ENGINEER



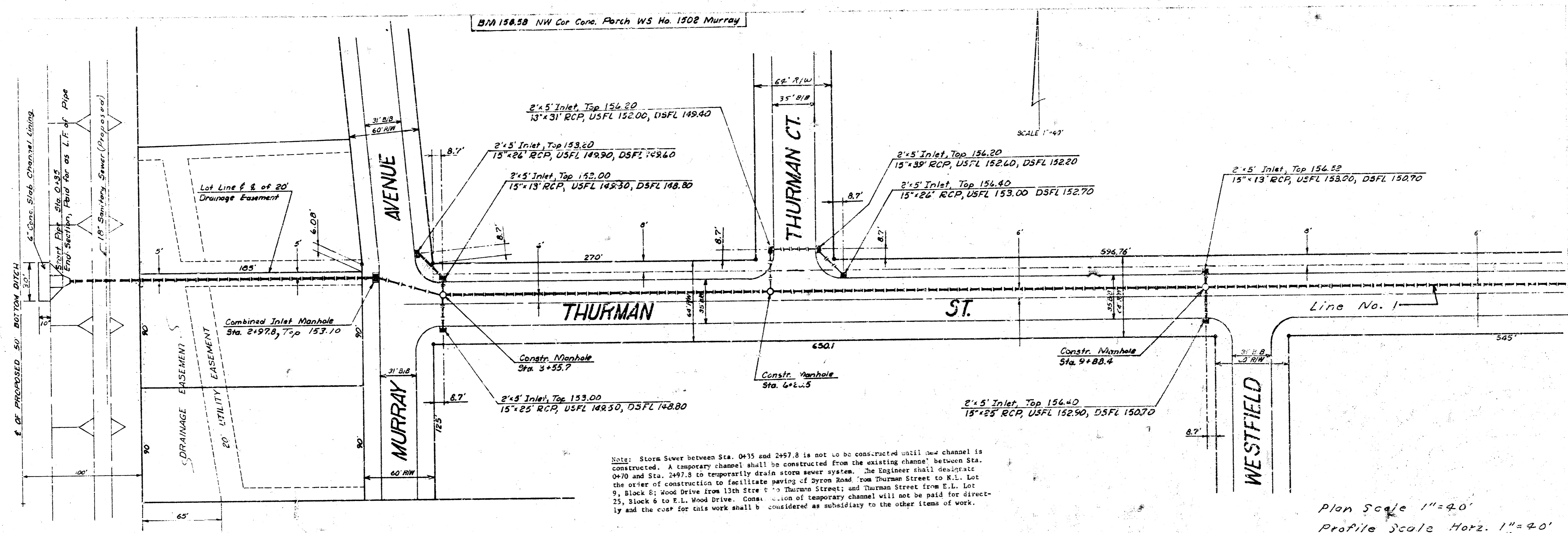
GENERAL NOTES

1. The price bid for "clearing right-of-way" shall include all removal and replacement work necessary for construction of Storm Water Sewer No. III and shall include tree removal. Site inspection is required by Contractor to verify extent of required work. Trees shall be removed only when approved by the engineer.
2. The Contractor shall coordinate his work with the channel Contractor of the channel at the outfall end of Storm Water Sewer No. III.
3. Pipe furnished for this project shall be either all reinforced concrete pipe or all corrugated metal pipe. Corrugated metal pipe shall conform to the applicable sections of Section 1409.05 and 1009.07 of the 1973 Kansas State Highway Specifications. Corrugated metal pipe furnished for this project is not required to be coated. The outfall pipes from curb inlets shall be same size corrugated metal pipe as shown for reinforced concrete pipe.
4. All curb inlets are to be constructed at the "set-back" location. Construction notes for each inlet gives the size and length of the outflow pipe together with its upstream flow elevation (U.S.F.L.) and its downstream flow elevation (D.S.F.L.).
5. All brick manholes are to be constructed in accordance with Wichita Standard Drawing entitled "Sewer Appurtenances." Manhole rings having a base diameter of 54" shall be used with all brick manholes.



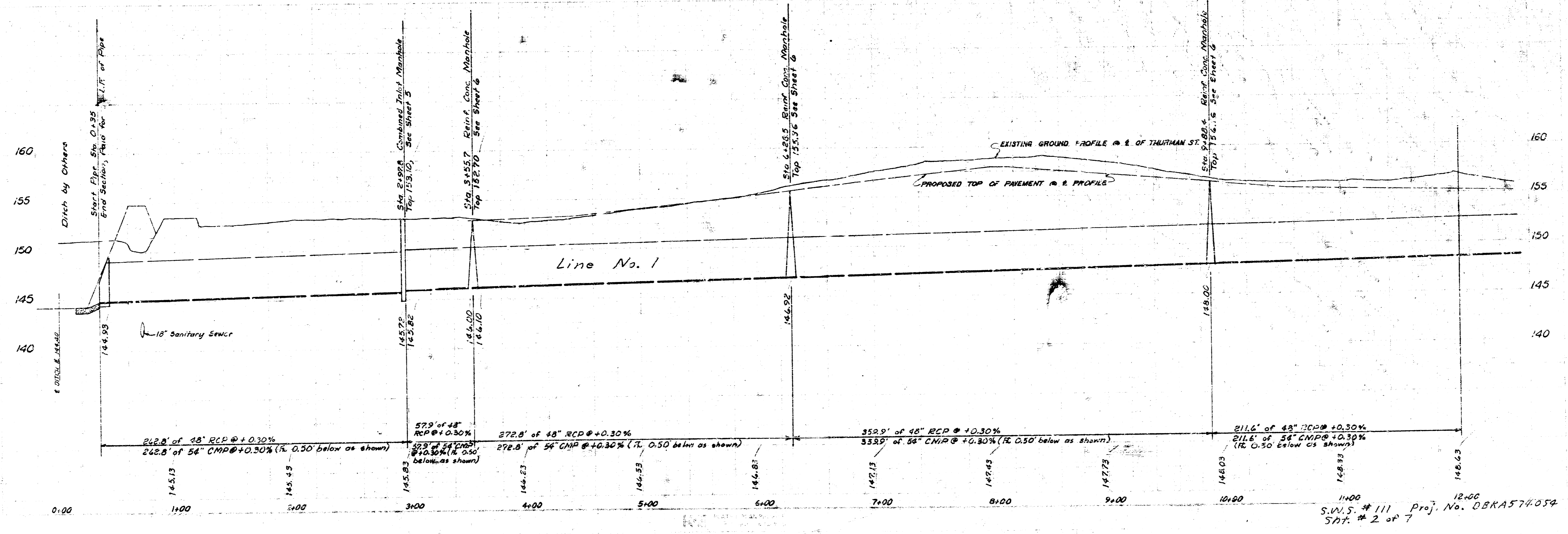
DATE: _____
PROJ. NO. DBKA574054

DCD 108, DCD 114



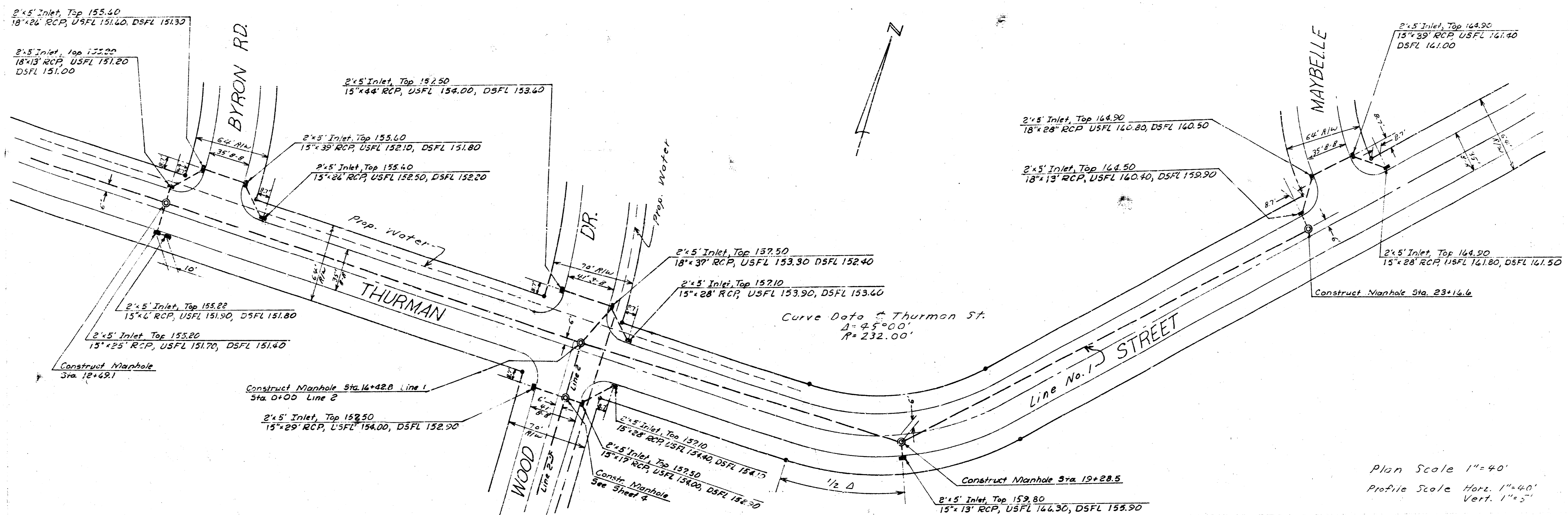
Note: Storm Sewer between Sta. 0+35 and 2+97.8 is not to be constructed until one channel is constructed. A temporary channel shall be constructed from the existing channel between Sta. 0+35 and Sta. 2+97.8 to temporarily drain a storm sewer system. The Engineer shall designate the order of construction to facilitate paving of Byron Road from Thurman Street to E.L. Lot 9, Block 8; Wood Drive from 13th Street to Thurman Street; and Thurman Street from E.L. Lot 25, Block 8 to E.L. Wood Drive. Construction of temporary channel will not be paid for directly and the cost for this work shall be considered as subsidiary to the other items of work.

Plan Scale 1"=40'
Profile Scale Horiz. 1"=40'
Vert. 1"=5'

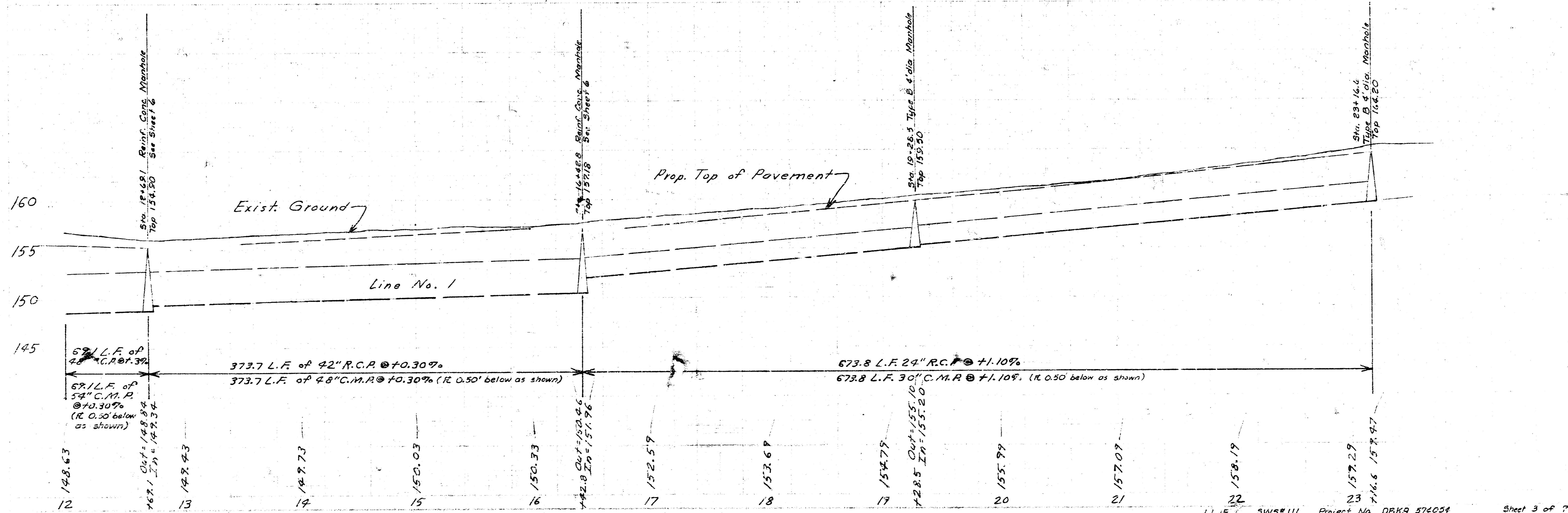


S.V.S. # 111 Proj. No. DBA574054
Sht. # 2 of 7

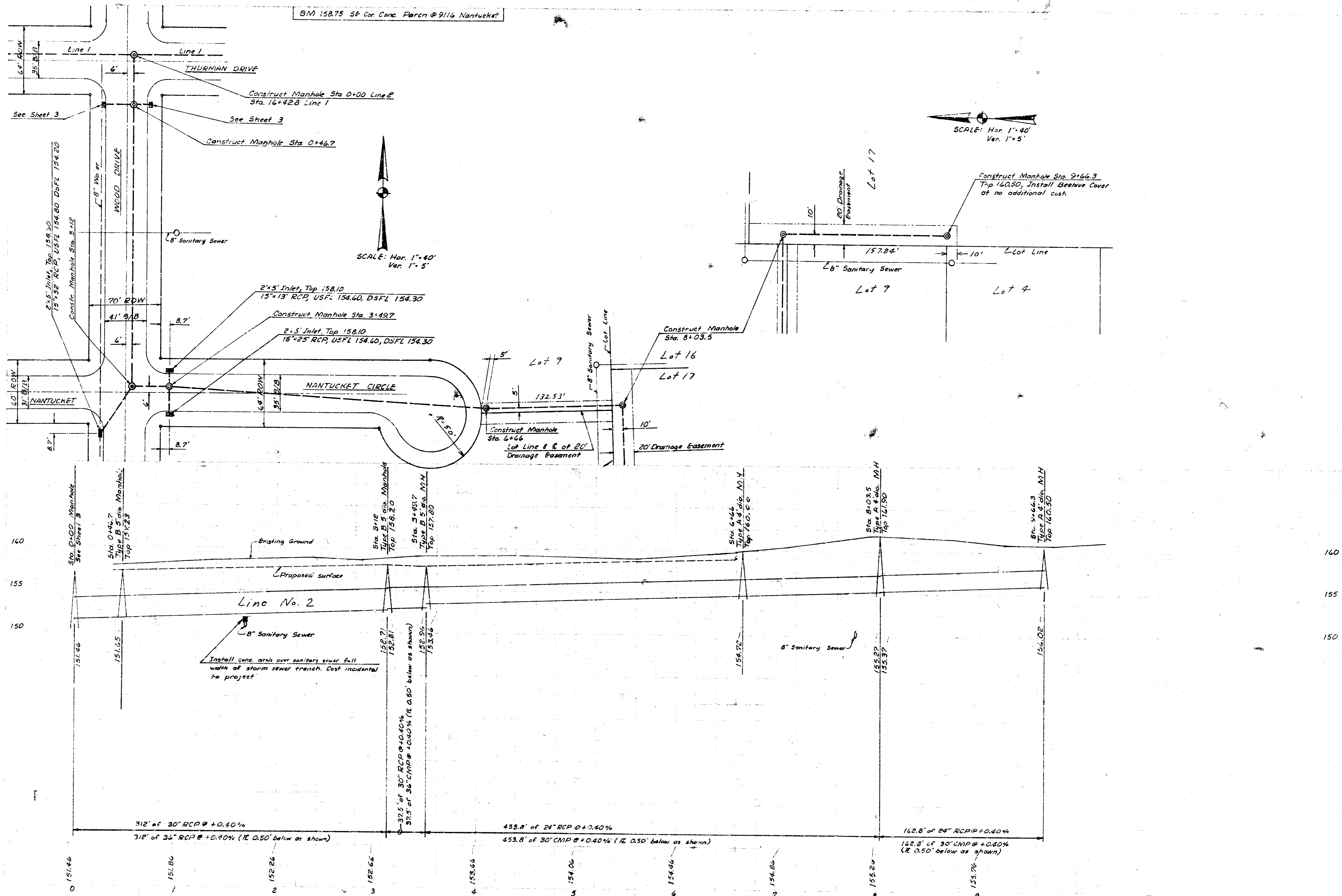
02/10/10



Plan Scale 1"=40'
Profile Scale Horiz. 1"=40'
Vert. 1"=5'



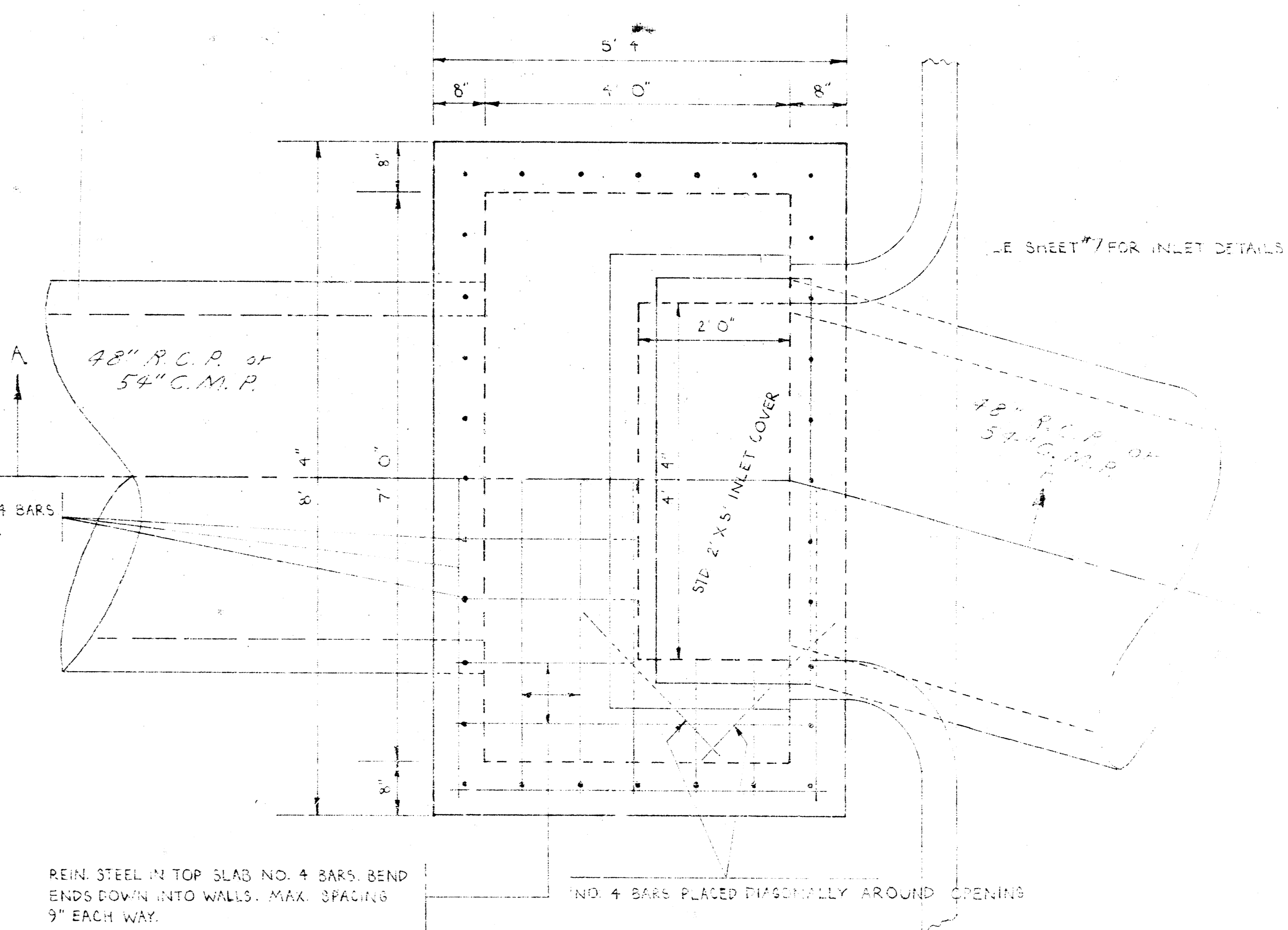
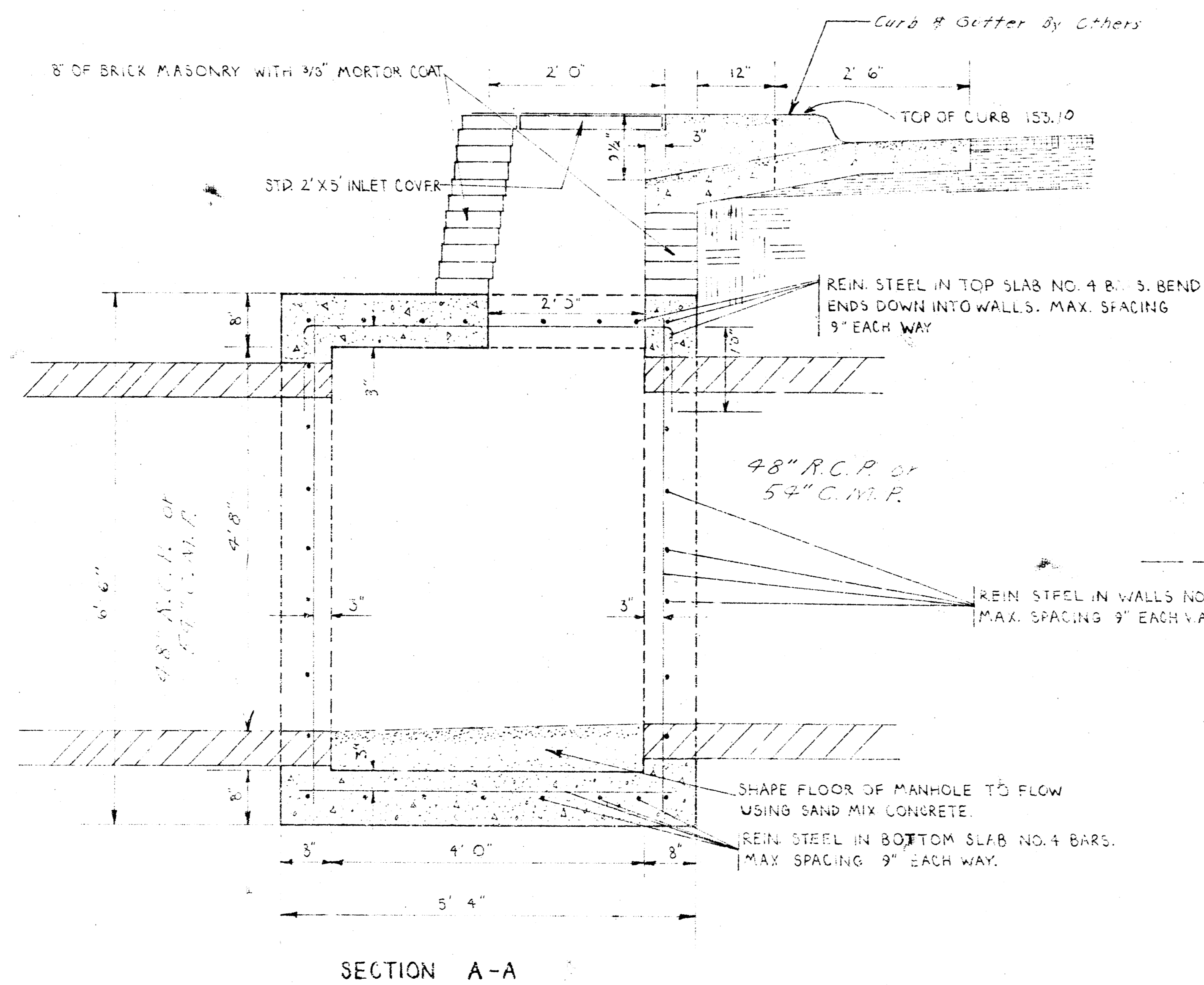
000 146, ECD 108



COMBINED INLET MANHOLE

© STATION 2+97.0

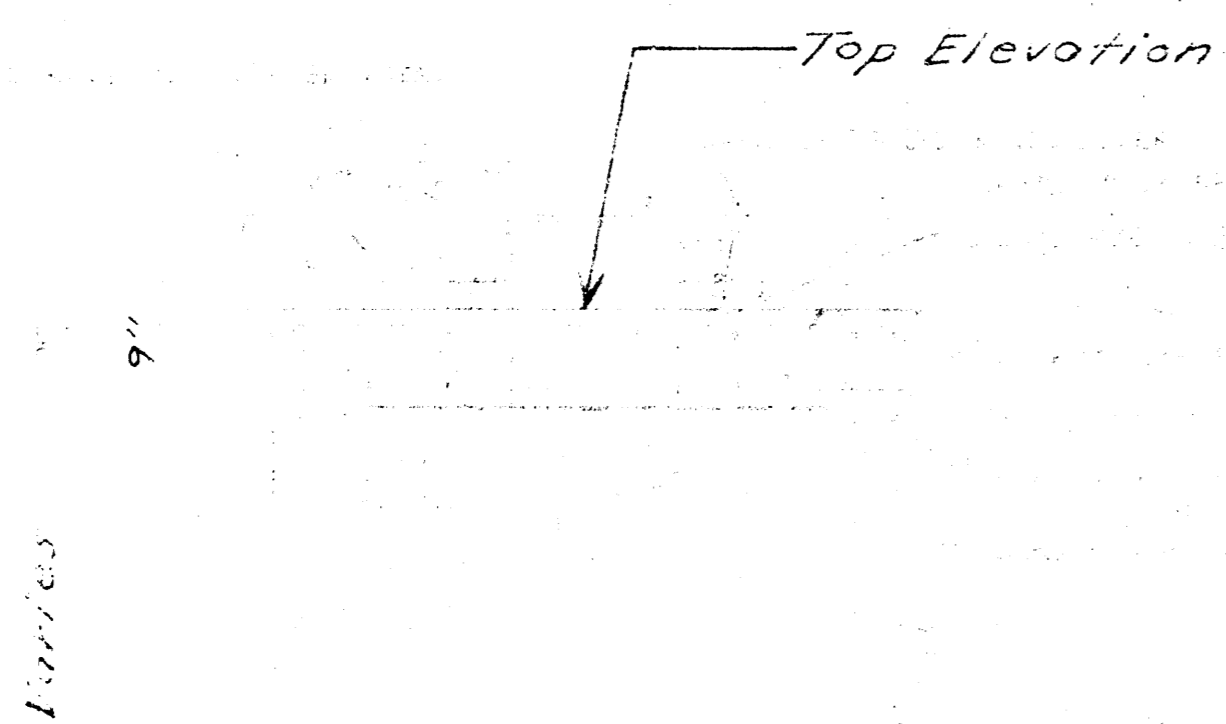
CONCRETE FOR INLET MANHOLE SHALL BE SIX BAGS PAVING MIX. THE BIDDING PRICE FOR THIS COMBINED INLET MANHOLE SHALL INCLUDE THE COST OF EXCAVATION, FURNISHING AND PLACING CONCRETE, BRICKS, COVER PLATE, AND REINFORCING STEEL.



Combined Inlet Manhole Detail
 S.W.S. # 111
 Proj. No. DBKA574054
 Sheet # 5 of 7

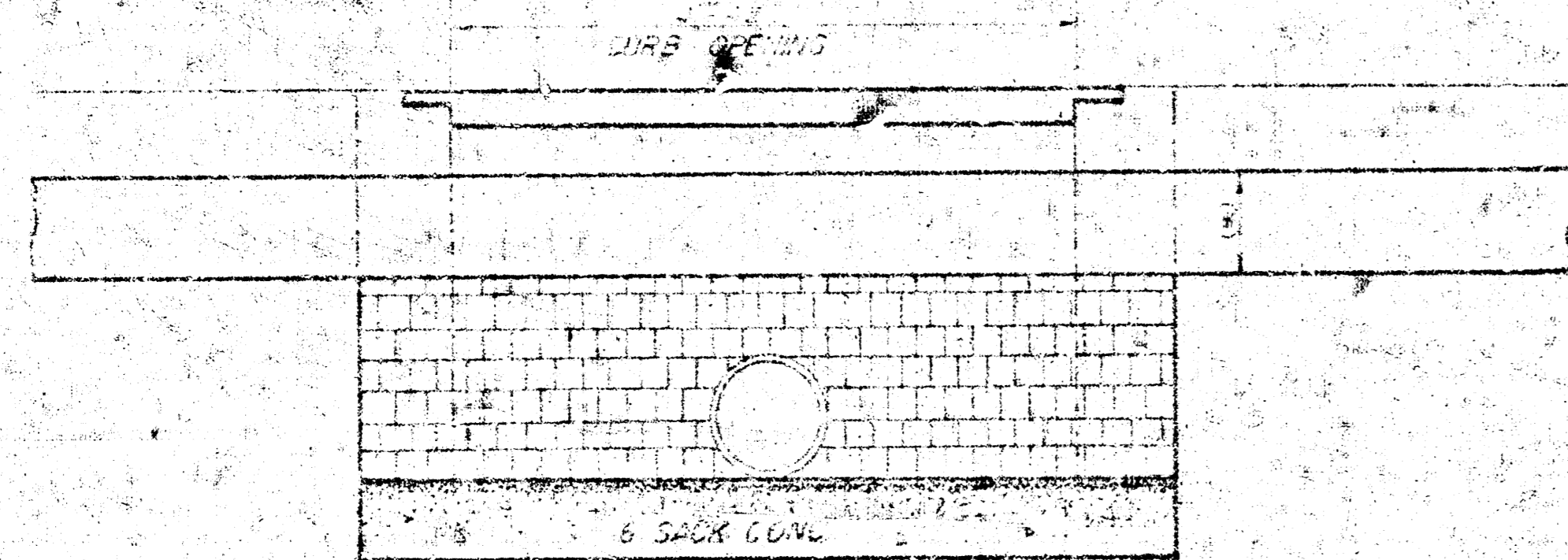
MANHOLE SCHEDULE

			Top Elev.
3153.7	6'0"	7'0"	150.85
6728.5	6'0"	7'0"	151.59
9488.4	6'0"	7'0"	152.51
12169.1	6'0"	7'0"	153.51
16442.8	6'0"	7'0"	154.63

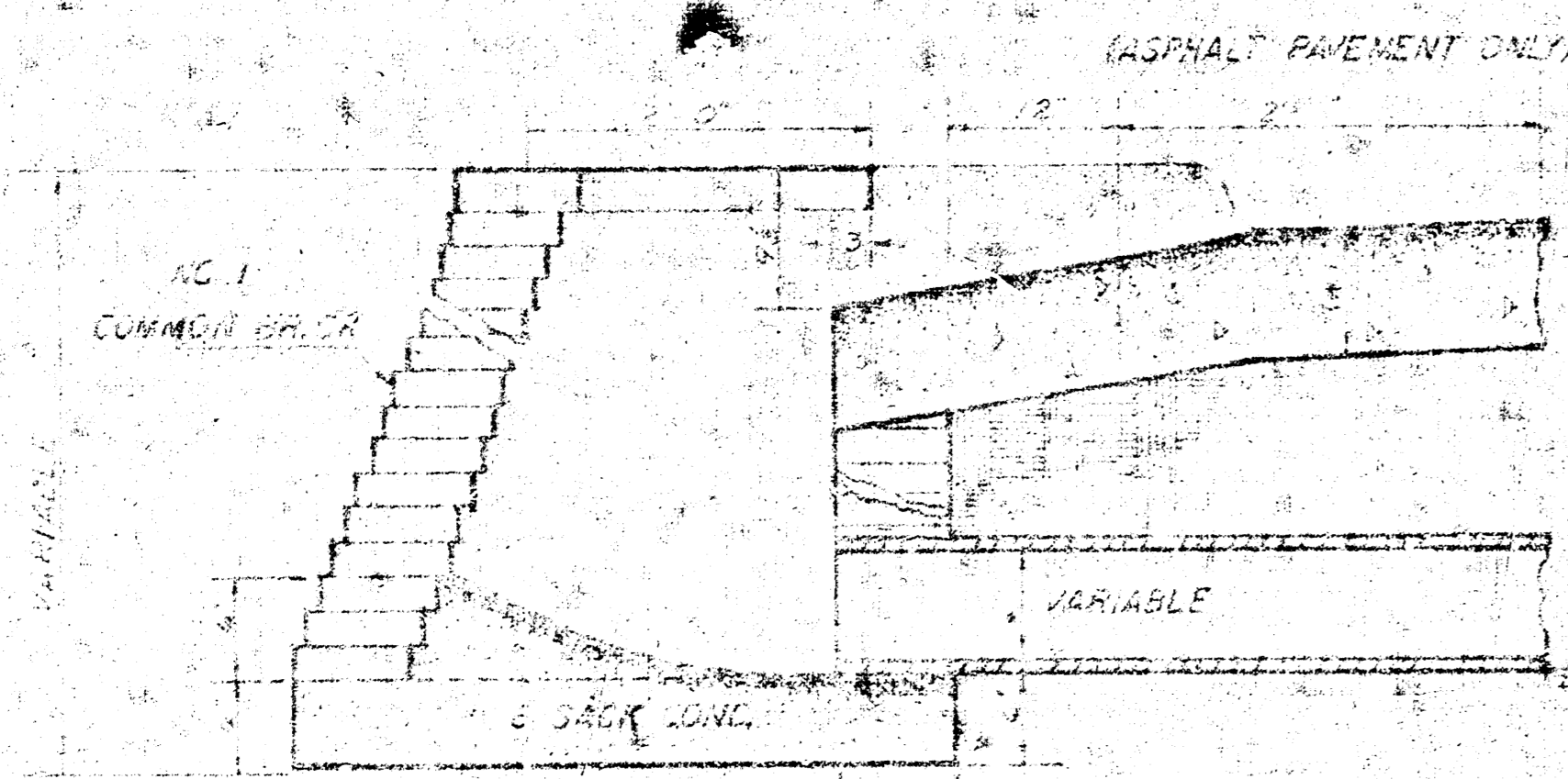


Reinforced Concrete Manhole Details
 S.W.S. # 111
 Proj. No. DBKAS74057
 Sheet # 6 of 7

THIS TYPE INLET TO BE USED
WHEN PAVEMENT IS ASPHALT
PAVEMENT WITH ASPHALT
BASE COURSE AND/OR WHEN
PAVEMENTS HAVE ROLL CURB.



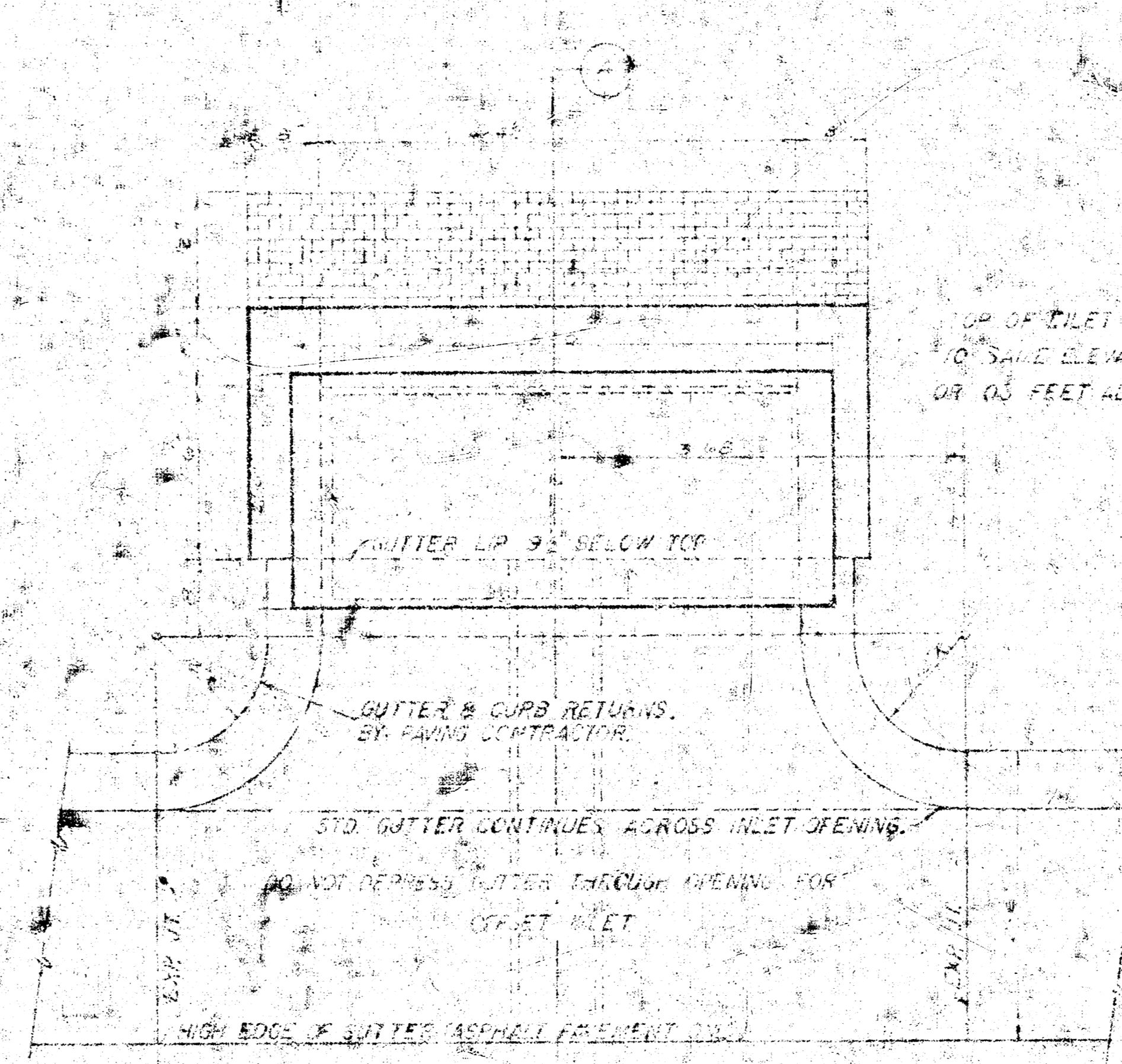
ELEVATION



SECTION THRU INLET
2x5 INLET DETAIL
SCALE 1/4" = 1'-0"

NOTE: BRICK FOR INLET CONSTRUCTION
SHALL CONFORM WITH THE LATEST
REVISION OF THE AMERICAN
SOCIETY FOR TESTING AND
MATERIALS DESIGNATION C32
FOR MANHOLE BRICK GRADE MS.

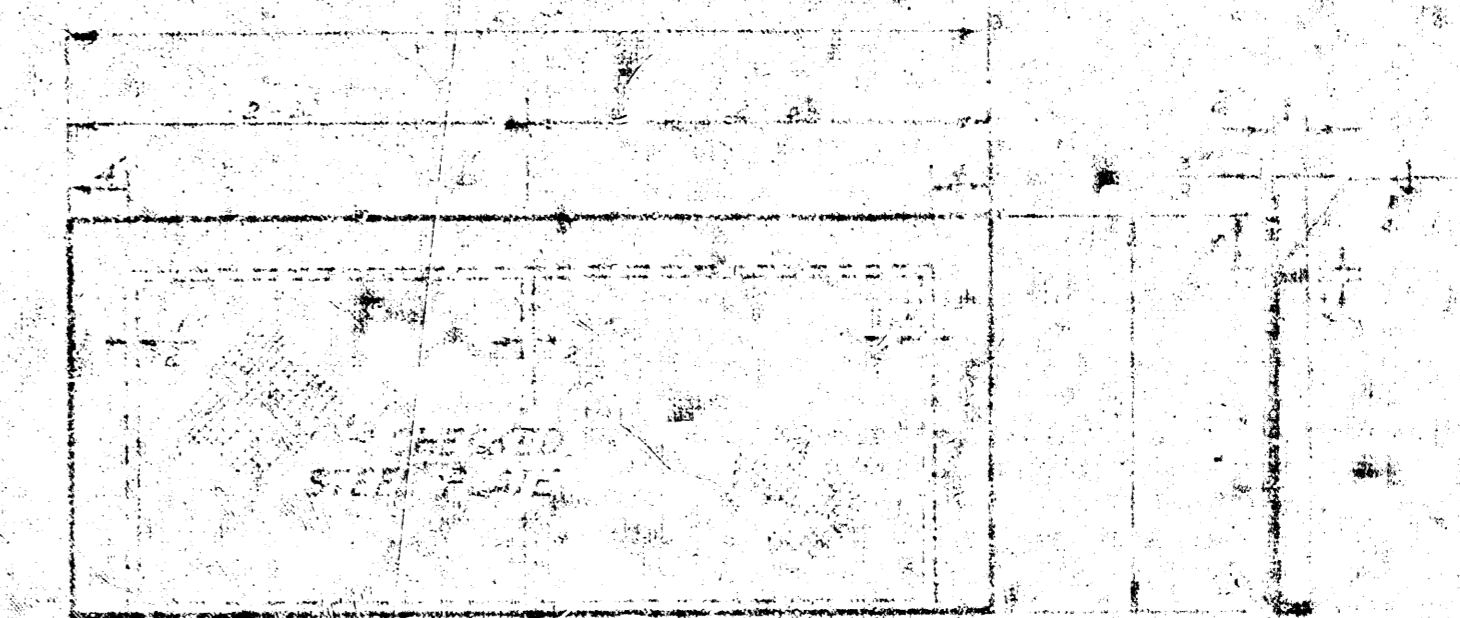
(A) CURB, GUTTER OR PAVEMENT THICKNESS



PLAN

NOTE: STRUCTURAL STEEL FOR
INLET COVER SHALL CONFORM
WITH THE LATEST REVISION OF
THE AMERICAN SOCIETY FOR
TESTING AND MATERIALS
DESIGNATION A36.

TOP OF INLET TO BE CONSTRUCTED
TO SAME ELEVATION AS STANDARD CURB
OR 0.5 FEET ABOVE ROLL CURB.



PLAN SECTION

ELEVATION

CITY OF WICHITA
STEEL INLET COVER
WEIGHT 205 LBS.
CHUP. PAINT-BLACK ENAMEL
SCALE 1/4" = 1'-0"

DETAIL
STANDARD 2x5' INLET
(SET BACK LOCATION)

CITY OF WICHITA, KANSAS
R. W. LINN CITY ENGINEER

JUNE 1974