

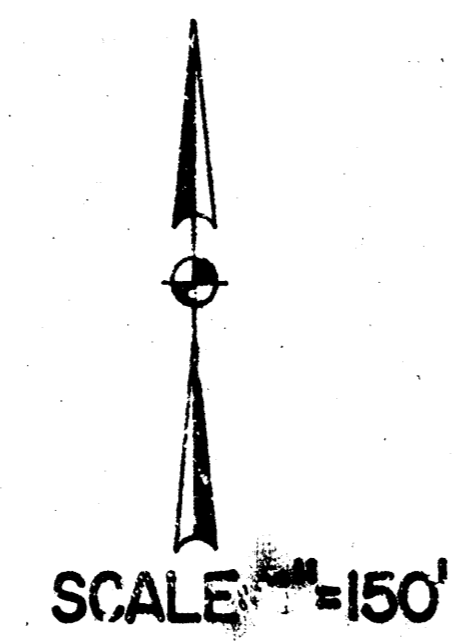
STORM WATER SEWER NO. 113

CITY OF WICHITA, KANSAS

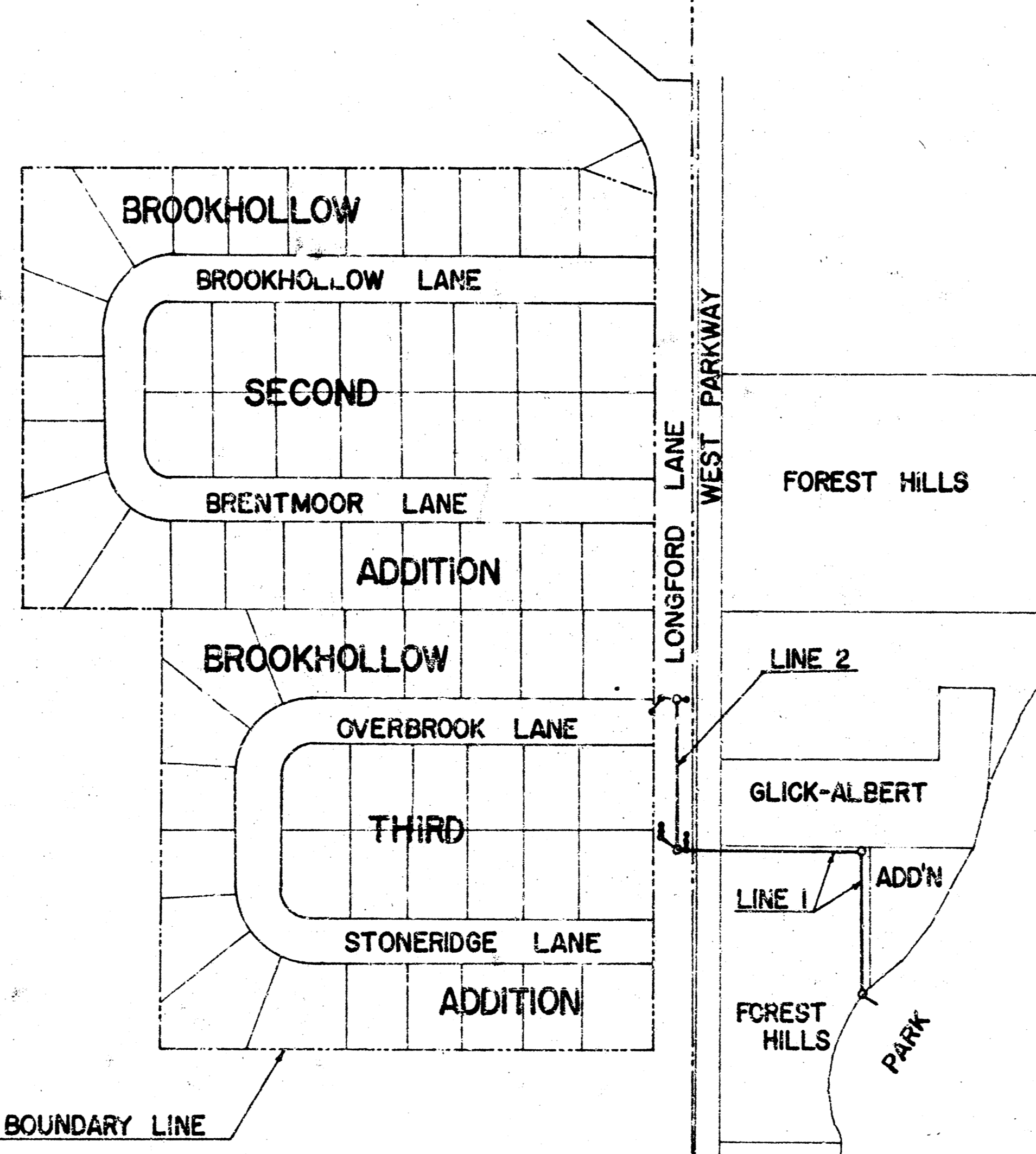
R.W. LINN, CITY ENGINEER

CENTRAL AVE.

SEC. 20, T27S, R2E



BENEFIT DISTRICT BOUNDARY LINE



GENERAL NOTES

The price bid for "Clearing Right-of-Way" shall include all removal and replacement work necessary for construction of Storm Water Sewer No. 113. It shall include tree removal and the removal and replacement of stone walls and walks. This work east of Longford Lane shall include the shaping of the surface similar to existing conditions of trees, stone walls and stone walks on the plans. Its inspection is required by contractor to verify extent of required work.

The price bid for "Pipe" includes the required fence removal and replacement. It may be possible to construct Storm Water Sewer No. 113 without fence removal, but costs may be less to the contractor if he removes and replaces the fence. The contractor has the option to construct Storm Water Sewer No. 113 with or without fence removal. All fence removed shall be replaced.

Pipe furnished for this project shall be either all reinforced concrete pipe or all corrugated metal pipe. Corrugated metal pipe shall conform to the applicable sections of Section 1009.05 and 1009.07 of the 1973 Kansas State Highway Specifications. Corrugated metal pipe furnished for this project shall be coated in accordance with "Type C" of Section 1009.07. The outlet pipes from curb inlets shall be same size corrugated metal pipe as shown for reinforced concrete pipe.

All curb inlets are to be constructed at the "set-back" location. See Wichita Standard Drawing for Standard 2' x 5' Inlet (Set Back Location). Flow pipe together with its upstream flow elevation (U.S.F.E.) and its downstream flow elevation (D.S.F.E.).

All brick manholes are to be constructed in accordance with Wichita Standard Drawing entitled "Sewer Appurtenances."

Contractor must use special care while constructing inlets on west side of Longford Lane so as to not damage water line under said inlets. The water lines as shown on the plans as "proposed" may be constructed by the time that the inlets are to be constructed.

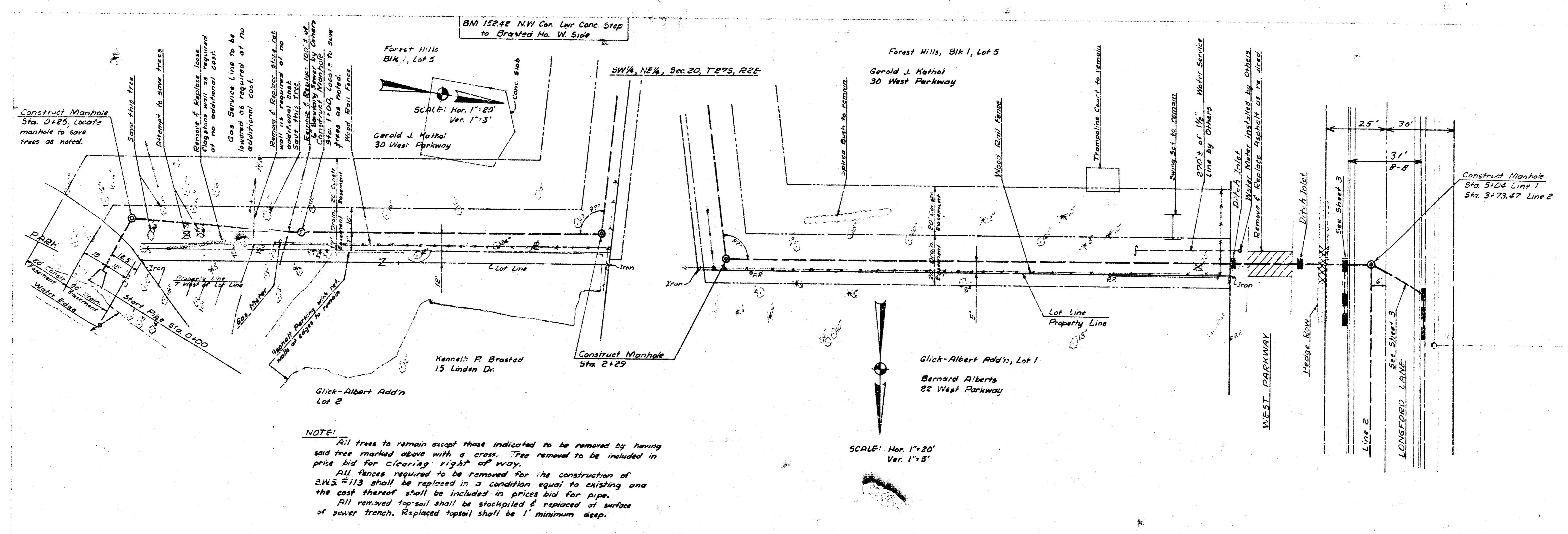
Manhole rings having a base diameter of 4" shall be used with all brick manholes.

NOTE: TREES TO BE REMOVED ONLY WHEN APPROVED BY THE ENGINEER

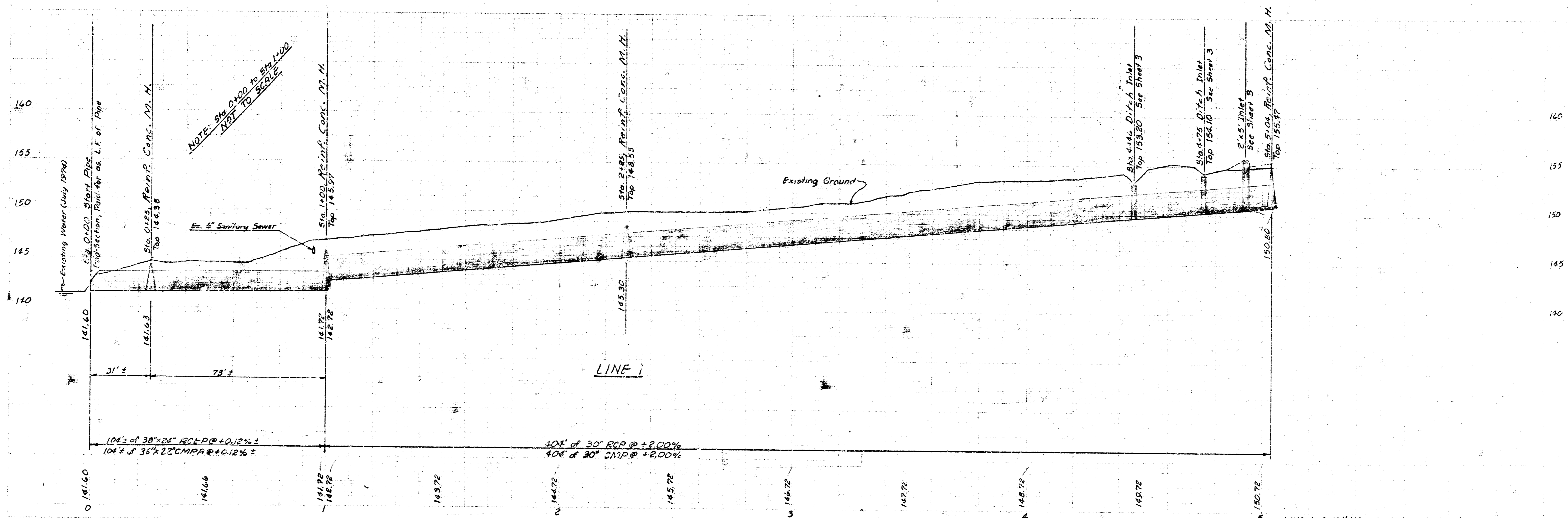
PROJECT NO. DBKA 574066

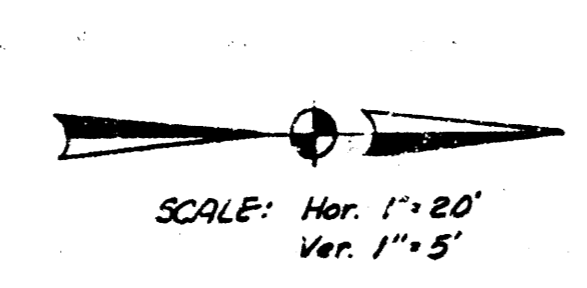
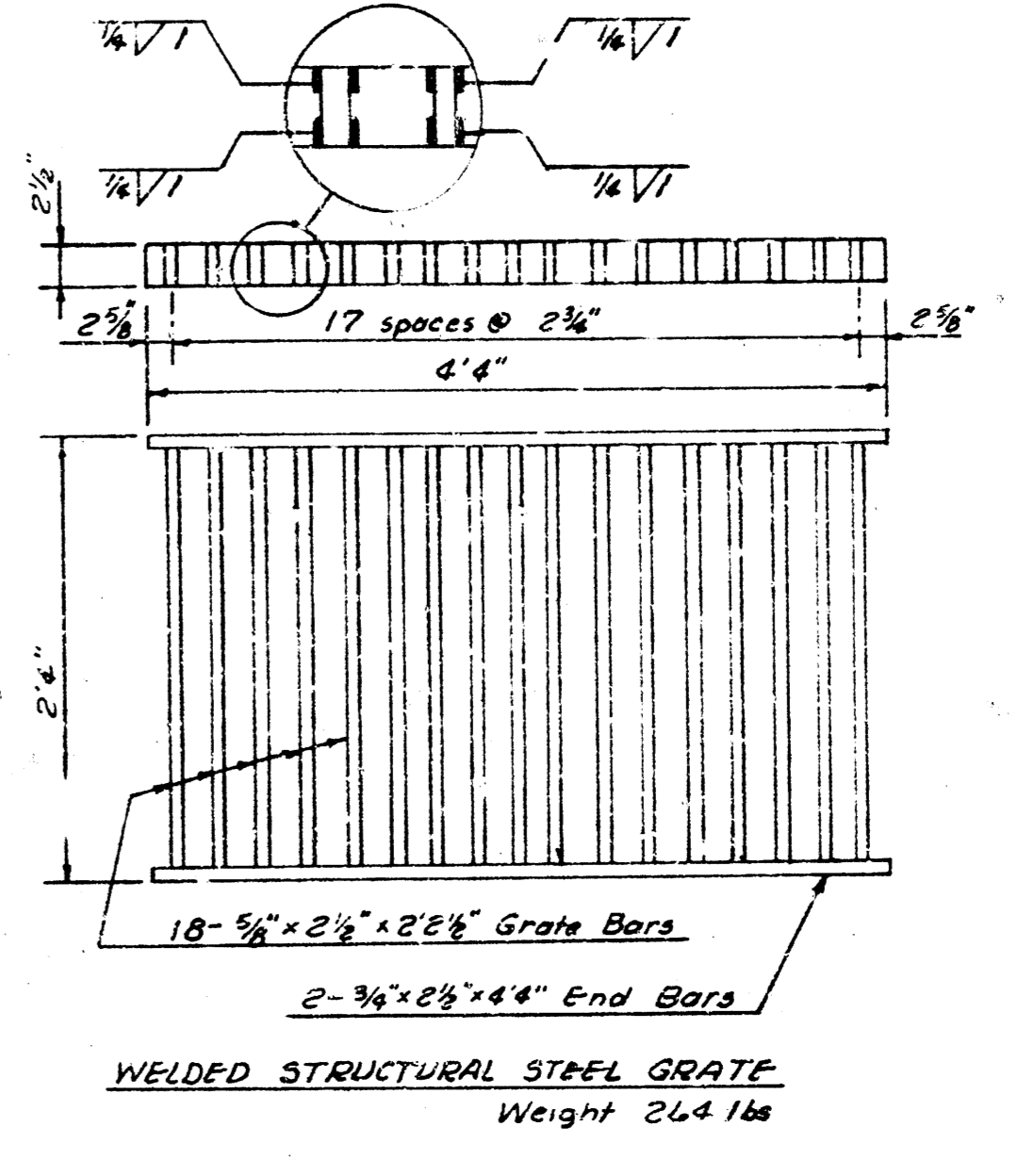
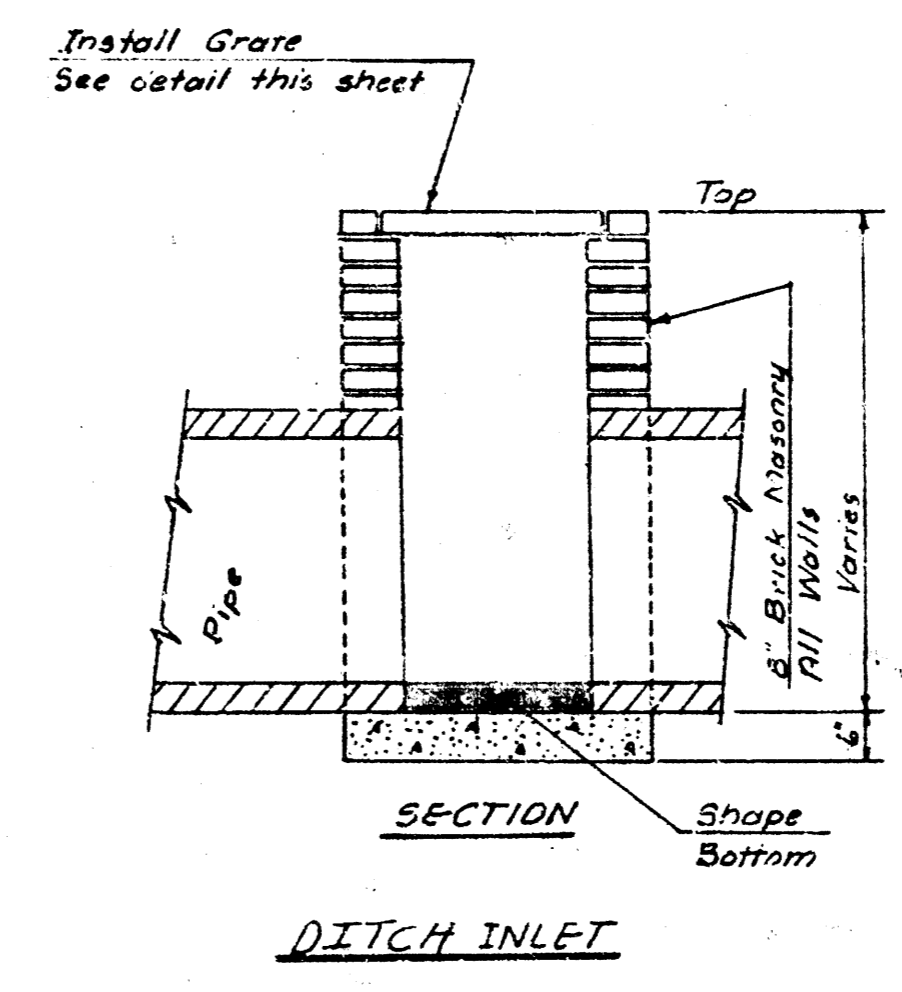
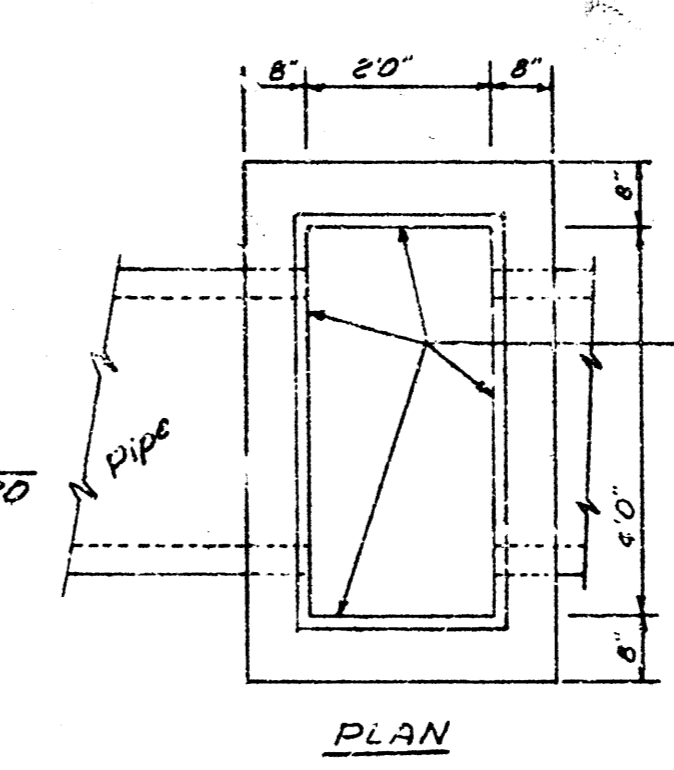
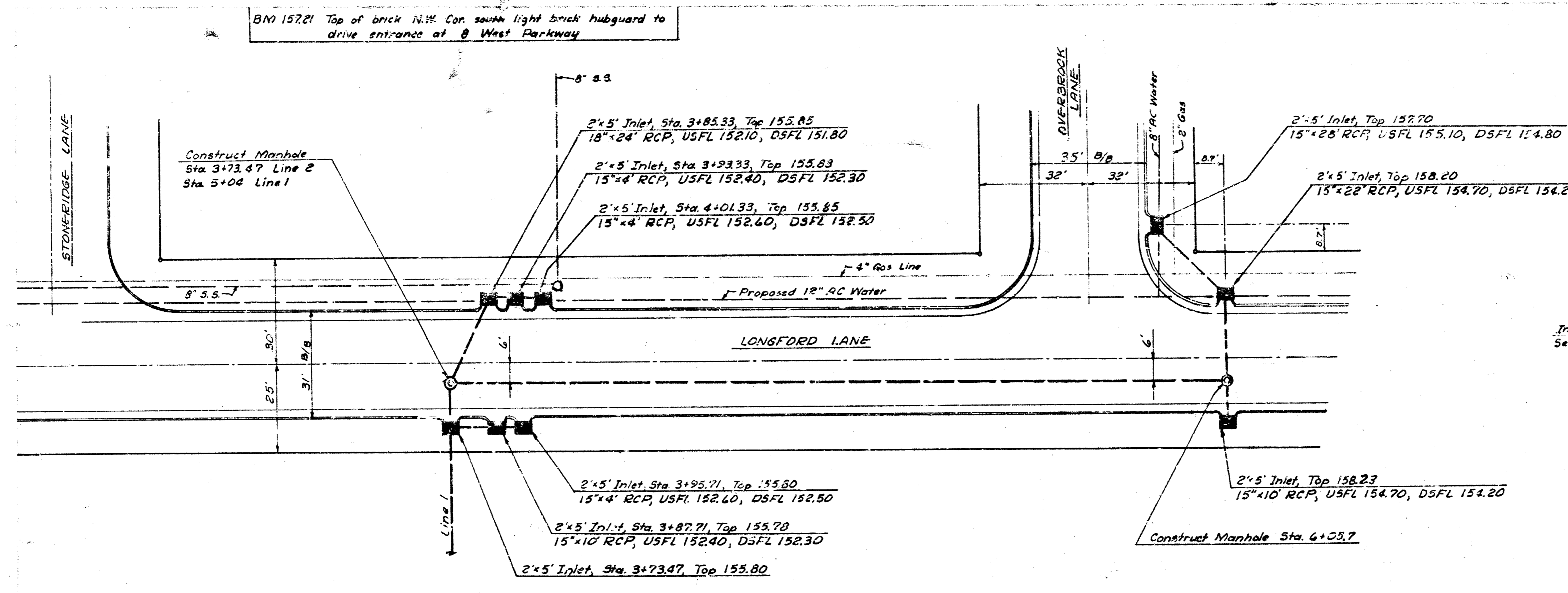
DATE: _____





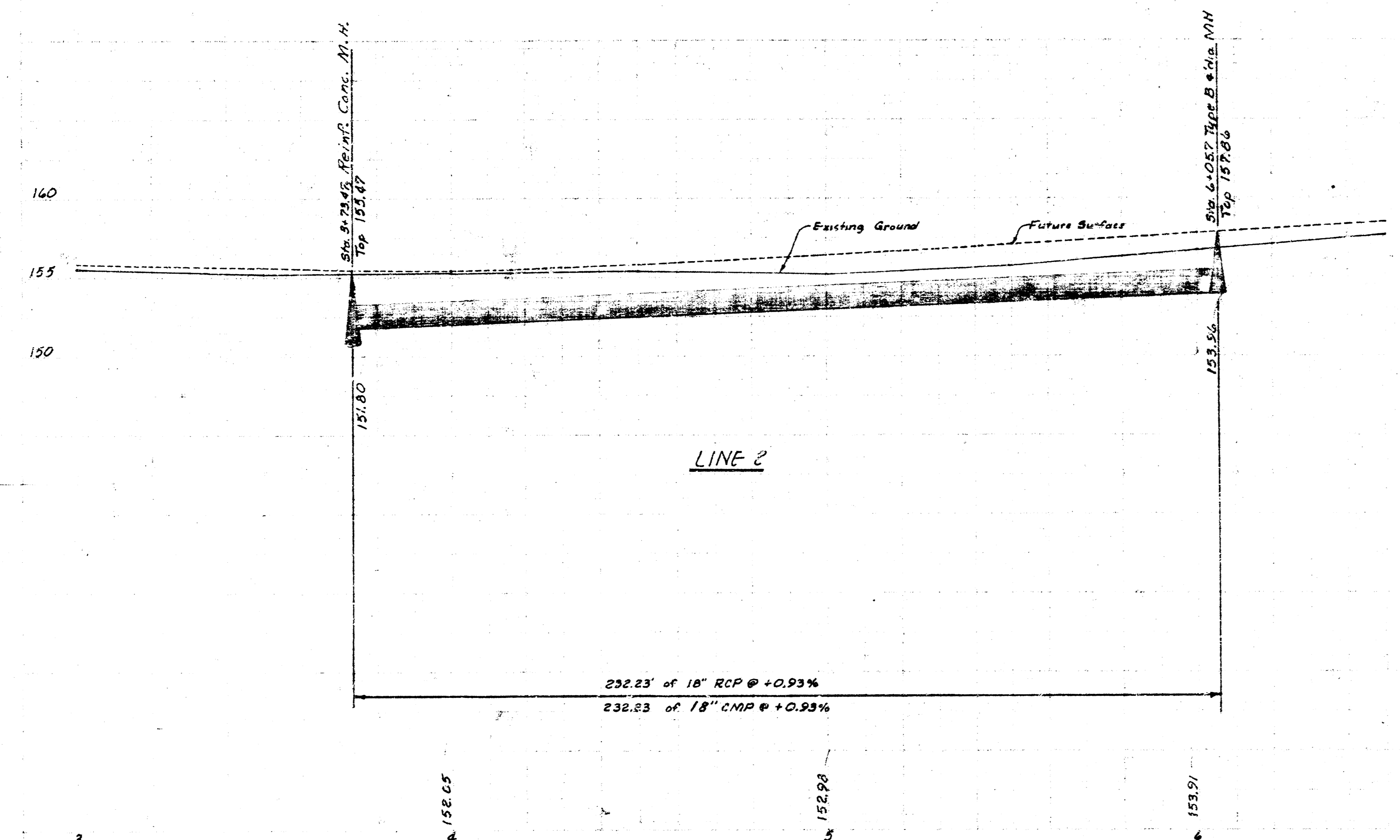
NOTE:
 All trees to remain except those indicated to be removed by having said trees marked above with a cross. Tree removal to be included in price bid for clearing right-of-way.
 All fences required to be removed for the construction of SWS #113 shall be replaced in a condition equal to existing and the cost thereof shall be included in prices bid for pipe.
 All removed topsoil shall be stockpiled & replaced of surface of sewer trench. Replaced topsoil shall be 1" minimum deep.

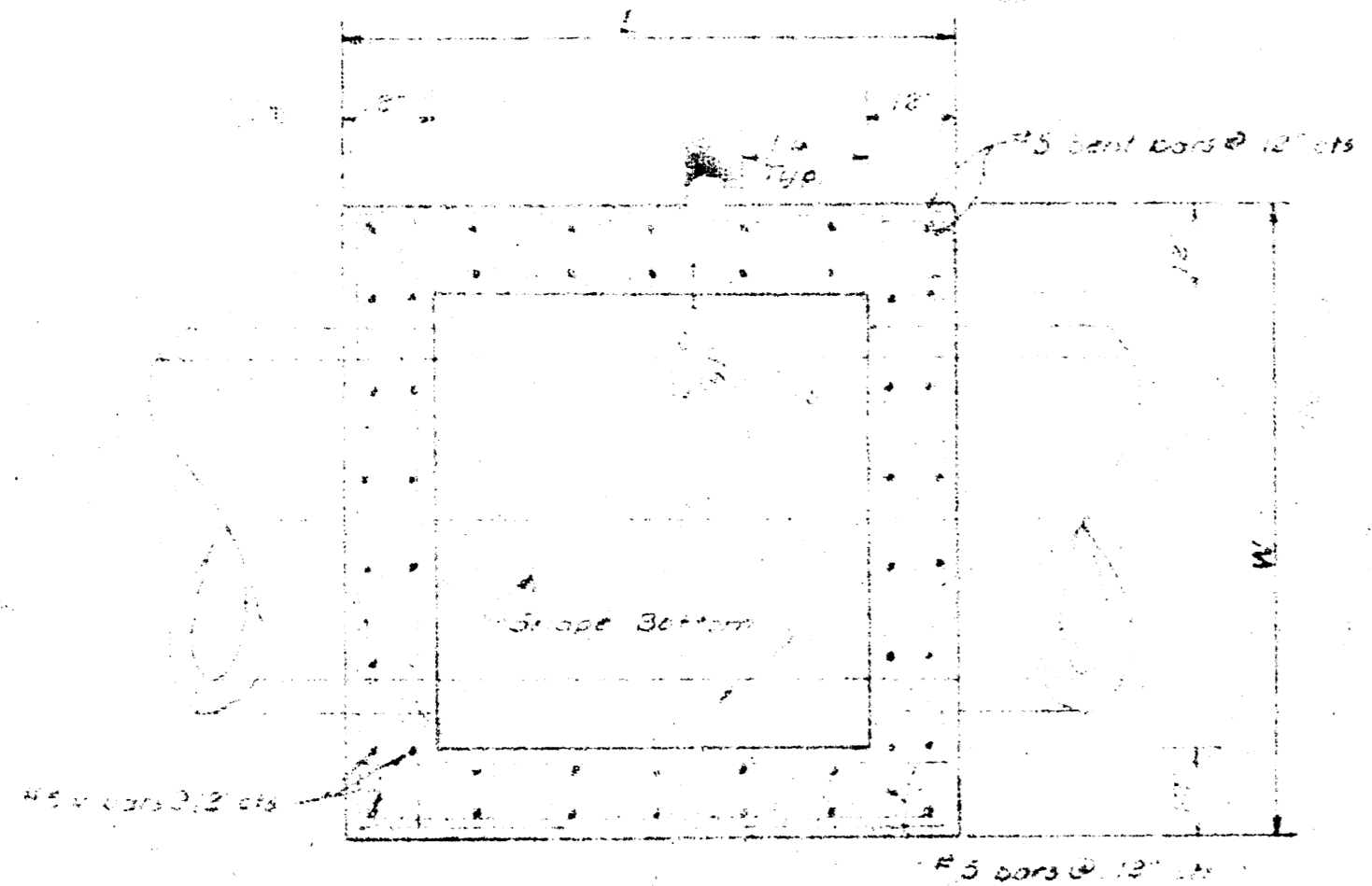




SCALE: Hor. 1"=20'
Ver. 1"=5'

NOTE: Streets as shown are proposed and do not exist. All inlets at set-back location.
Stationing this sheet equals paving stationing Longford Lane.



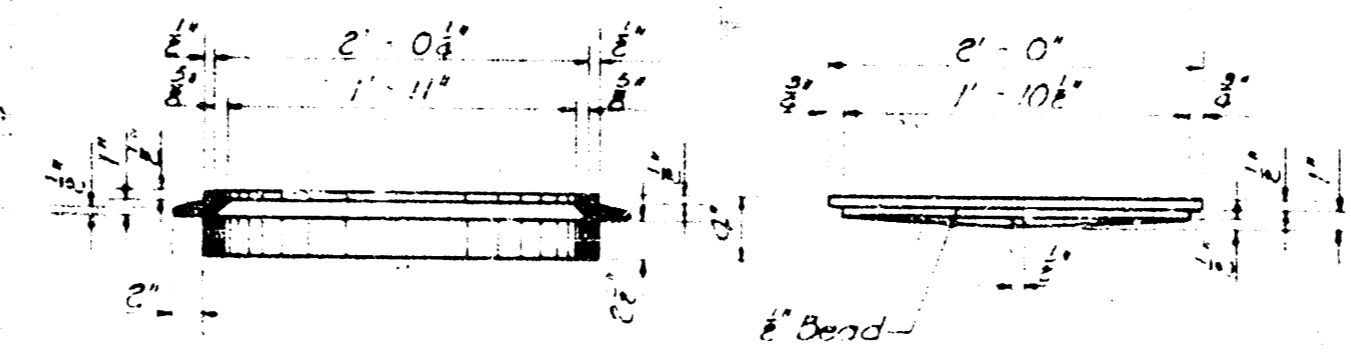


PLAN SECTION THRU WALLS
SCALE: 1/8" = 1'-0"

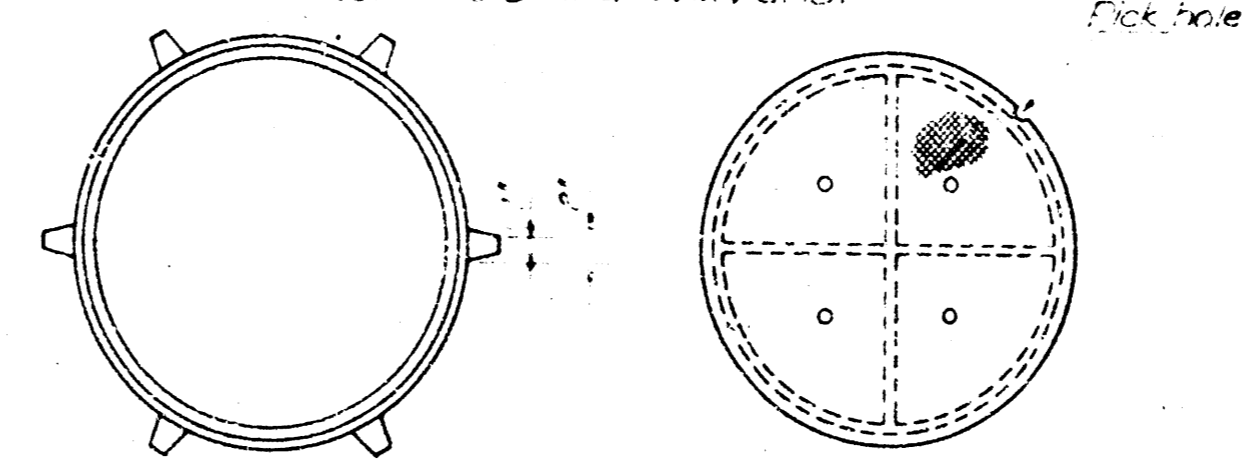
MANHOLE SCHEDULE

STATION	L	W	Top Elev.
3+25	6'0"	6'0"	144.38
1+00	6'0"	6'0"	143.77
2+29	6'0"	6'0"	143.55
5+04	6'0"	6'0"	139.05

*Light Type Casting



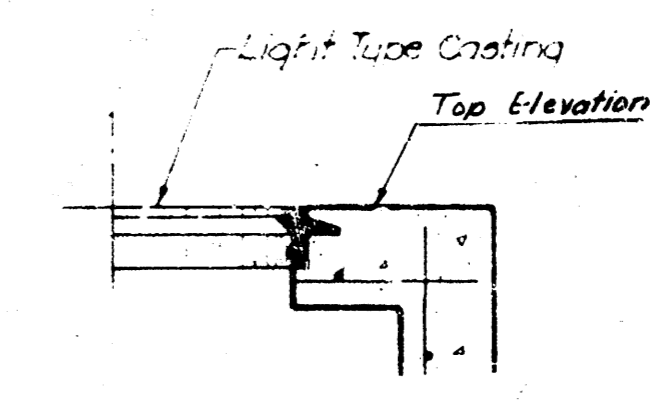
NOTE: Weight of castings includes no allowance for fillers and overruns.



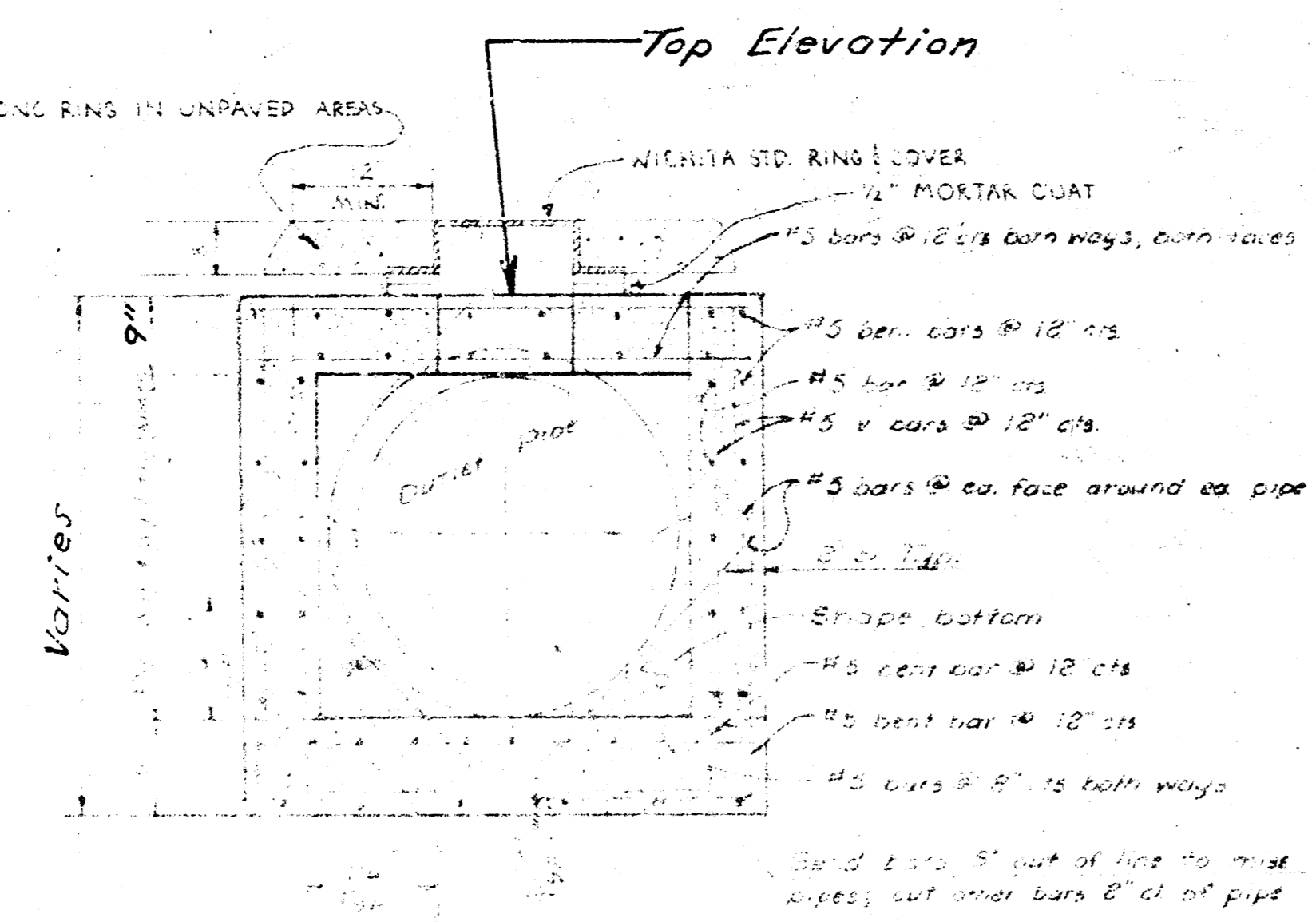
CAST IRON MANHOLE RING
Weight: 53 lbs

CAST IRON MANHOLE COVER
Weight: 64 lbs

LIGHT TYPE MANHOLE COVER & RING



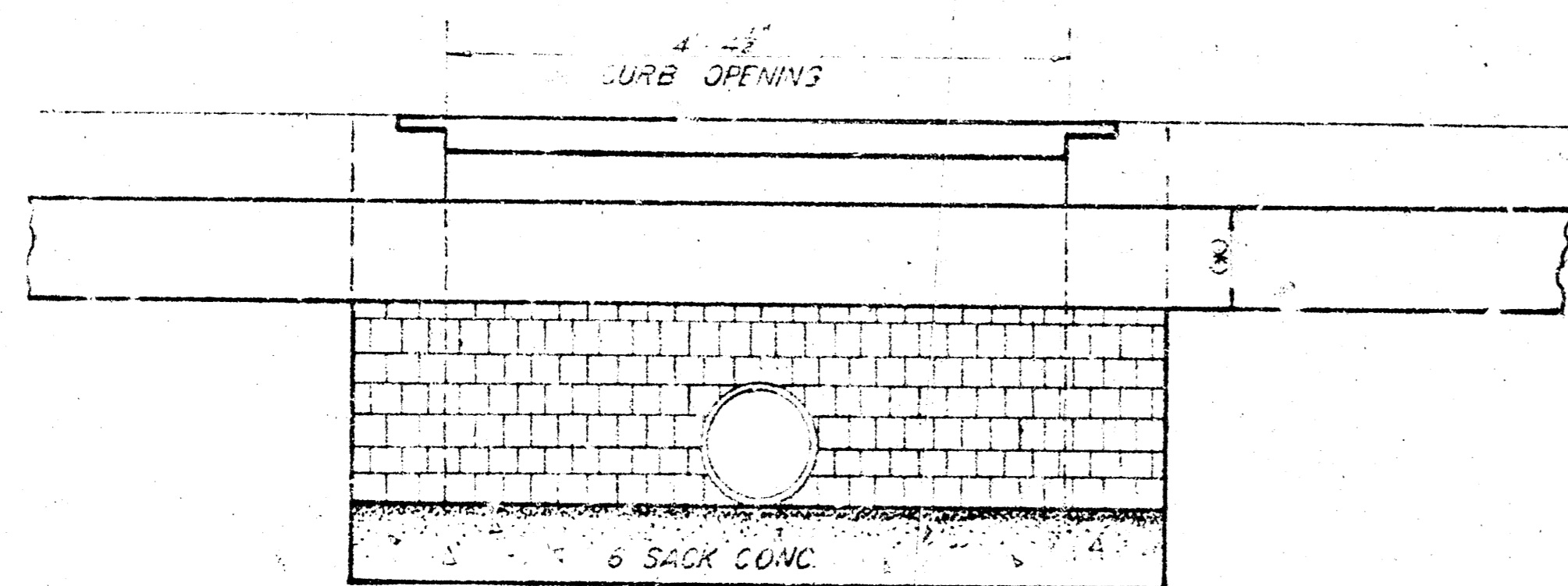
LIGHT TYPE CASTING INSTALLATION



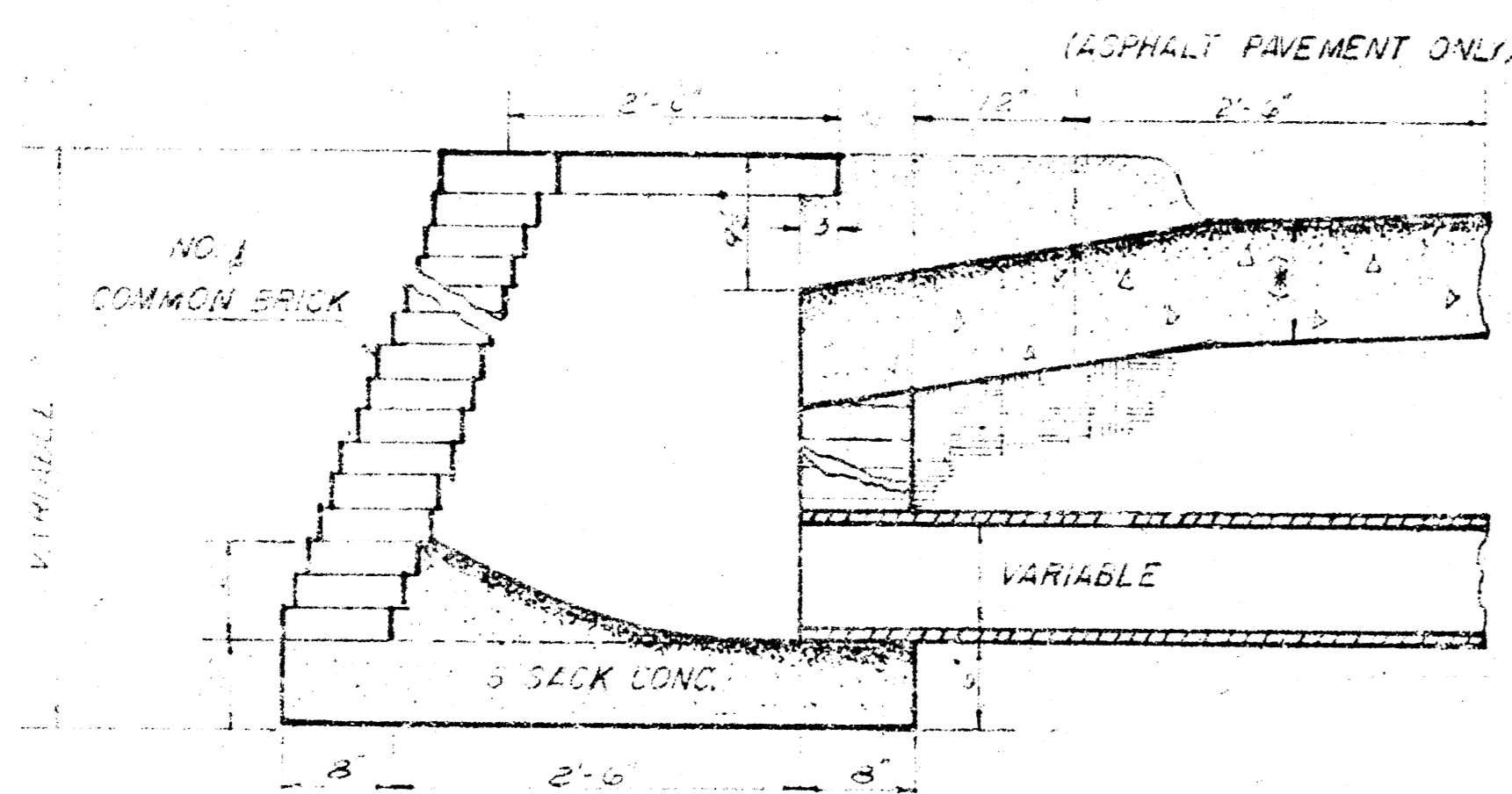
GENERAL NOTES: SEE SHEET 1
SCALE: 1/8" = 1'-0"

Reinforced Concrete Manhole Details
S. W. S. # 113
Proj. No. DBKA574066
Sheet # 4 of 5

THIS TYPE INLET TO BE USED
WHEN PAVEMENT IS ASPHALT
PAVEMENT WITH ASPHALT
BASE COURSE AND/OR WHEN
PAVEMENTS HAVE ROLL CURB.



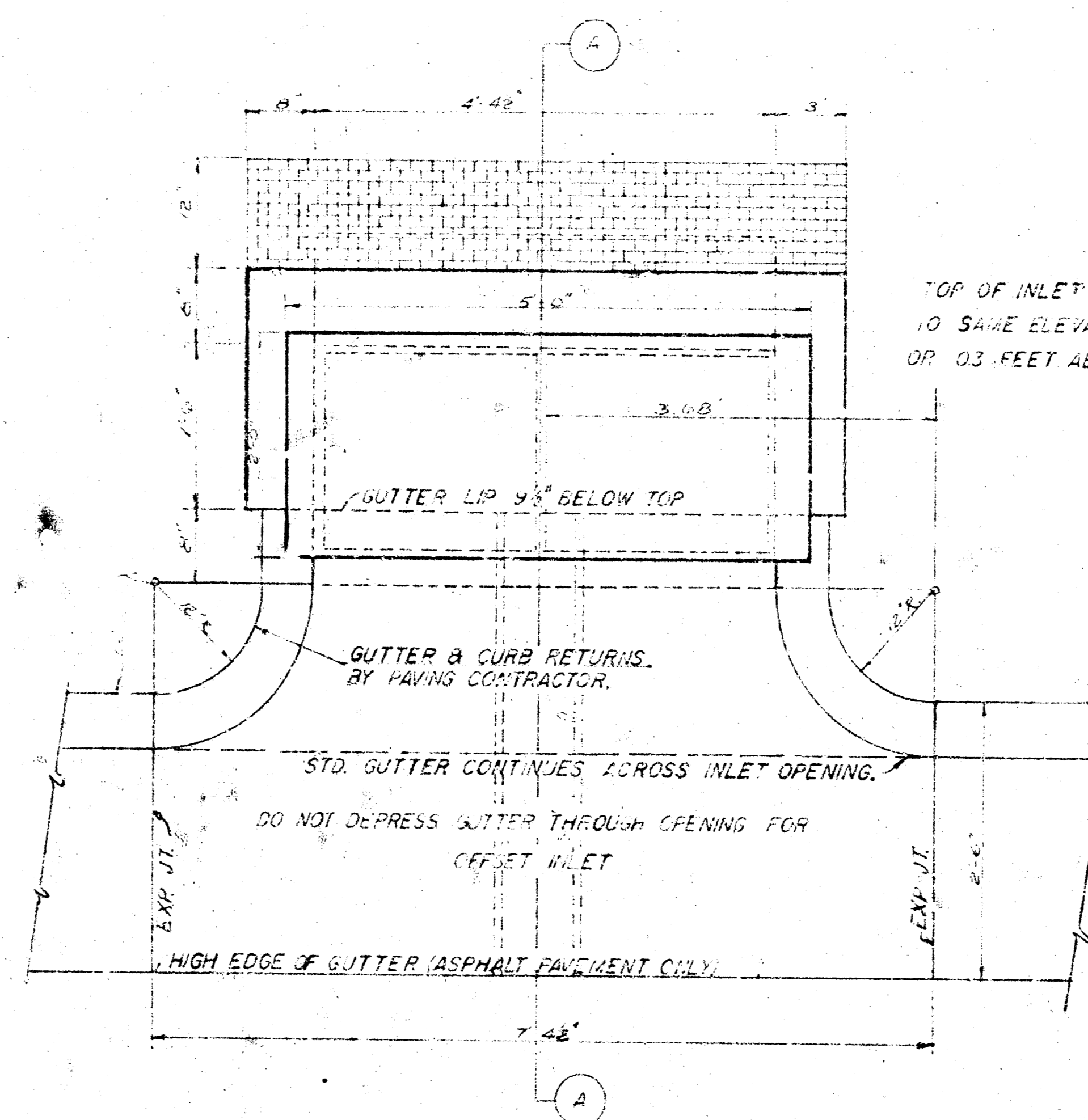
ELEVATION



SECTION THRU INLET
2'x5' INLET DETAIL
SCALE 1/4"=1'-0"

NOTE: BRICK FOR INLET CONSTRUCTION SHALL CONFORM WITH THE LATEST REVISION OF THE AMERICAN SOCIETY FOR TESTING AND MATERIALS DESIGNATION C32 FOR MANHOLE BRICK GRADE MS.

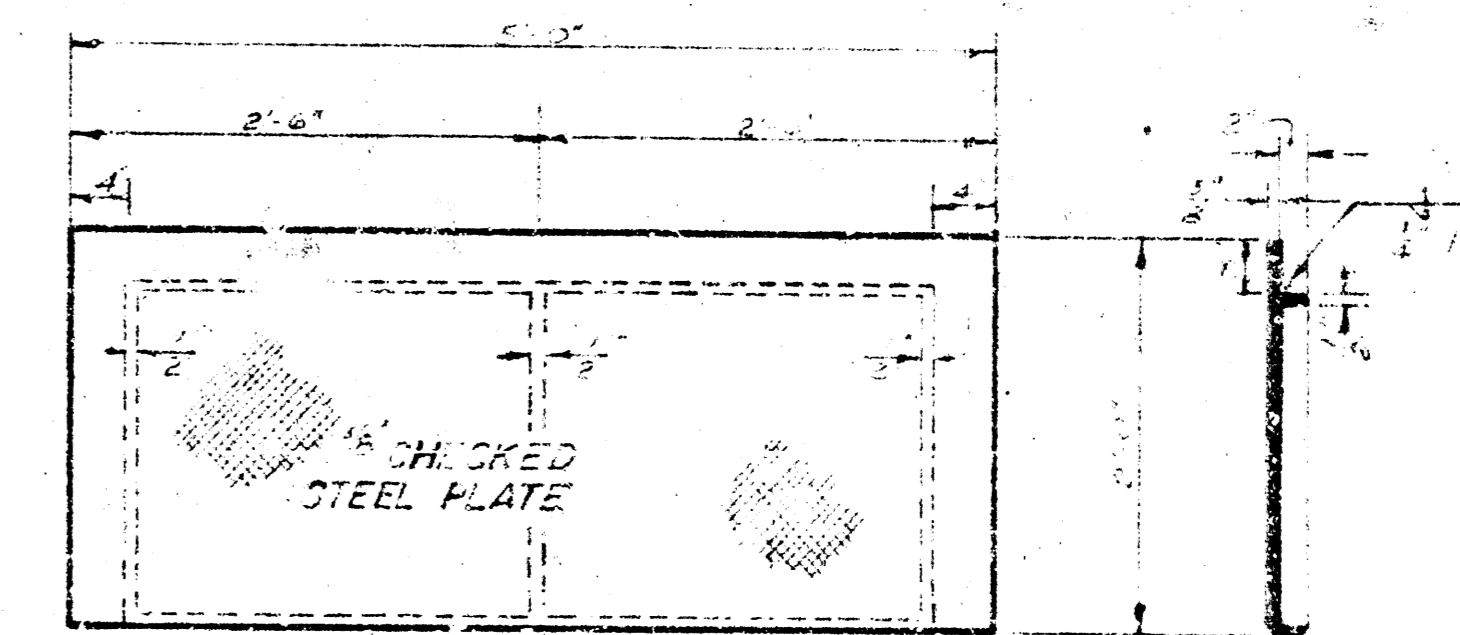
(*) CURB & GUTTER OR PAVEMENT THICKNESS



PLAN

TOP OF INLET TO BE CONSTRUCTED TO SAME ELEVATION AS STANDARD CURB OR .03 FEET ABOVE ROLL CURB

NOTE: STRUCTURAL STEEL FOR INLET COVER SHALL CONFORM WITH THE LATEST REVISION OF THE AMERICAN SOCIETY FOR TESTING AND MATERIALS DESIGNATION A36.



PLAN

SECTION

ELEVATION

CITY OF WICHITA
STEEL INLET COVER
WEIGHT=206 LBS.
SHOP PAINT-BLACK ASPH.
SCALE 1/4"=1'-0"

DETAIL
STANDARD 2'x5' INLET
(SET BACK LOCATION)

CITY OF WICHITA, KANSAS
R. W. LINN CITY ENGINEER

JUNE 1974

S.W. S. #113
Proj. No. DBKA574066
Sheet # 5 of 5