

S.W.S. 119

468-76-245-80277-000-000-001

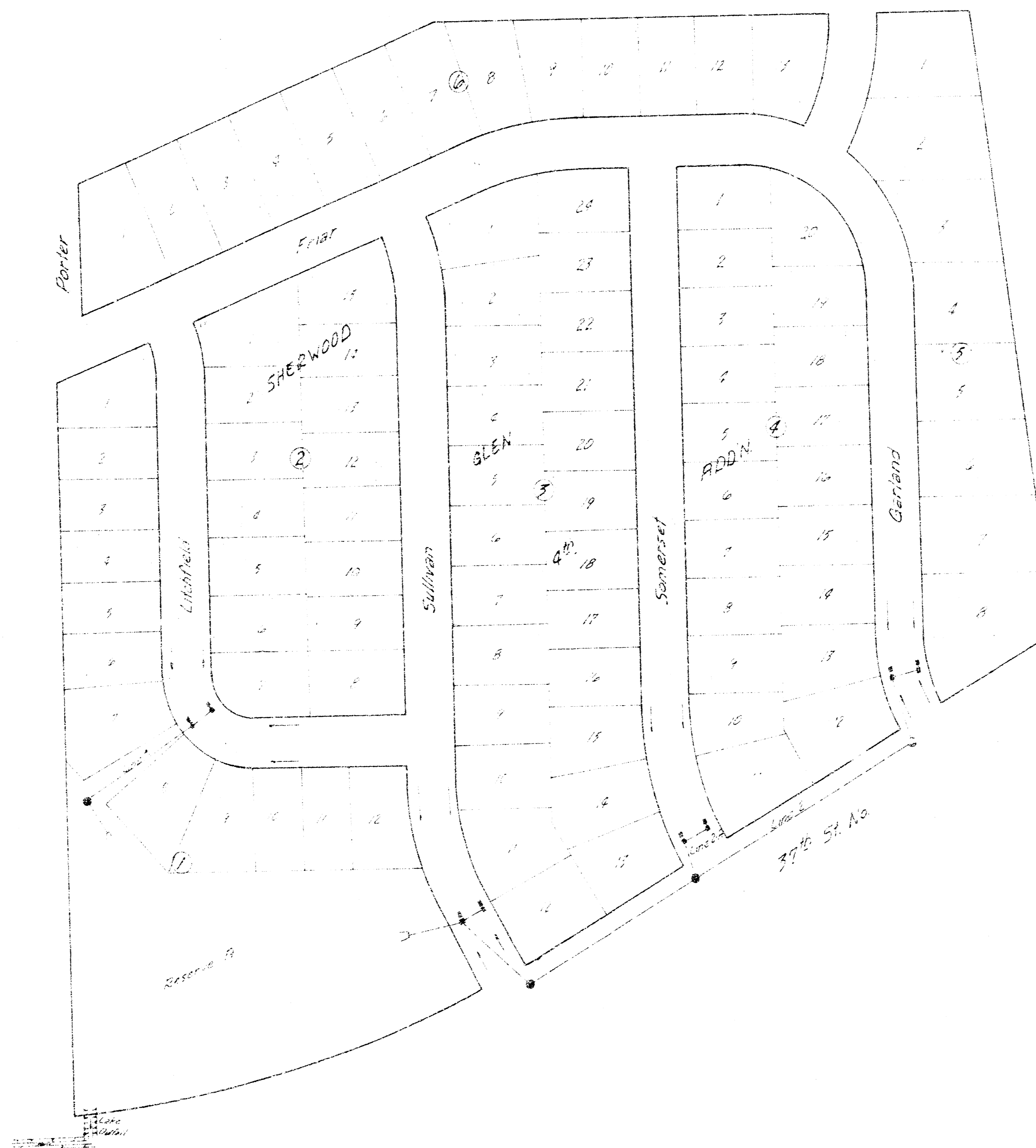
CITY of WICHITA, KANSAS
Public Works-Engineering
DEAN SELLERS - Acting City Engineer

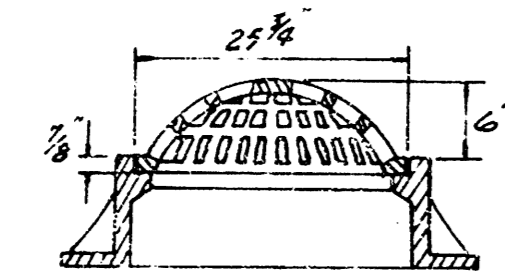
Date _____

INDEX

Sht	Desc
1	Title Sheet
2	Line 1
3-4	Line 2 & 2A
5	Lake Outfall
6	Inlet Detail

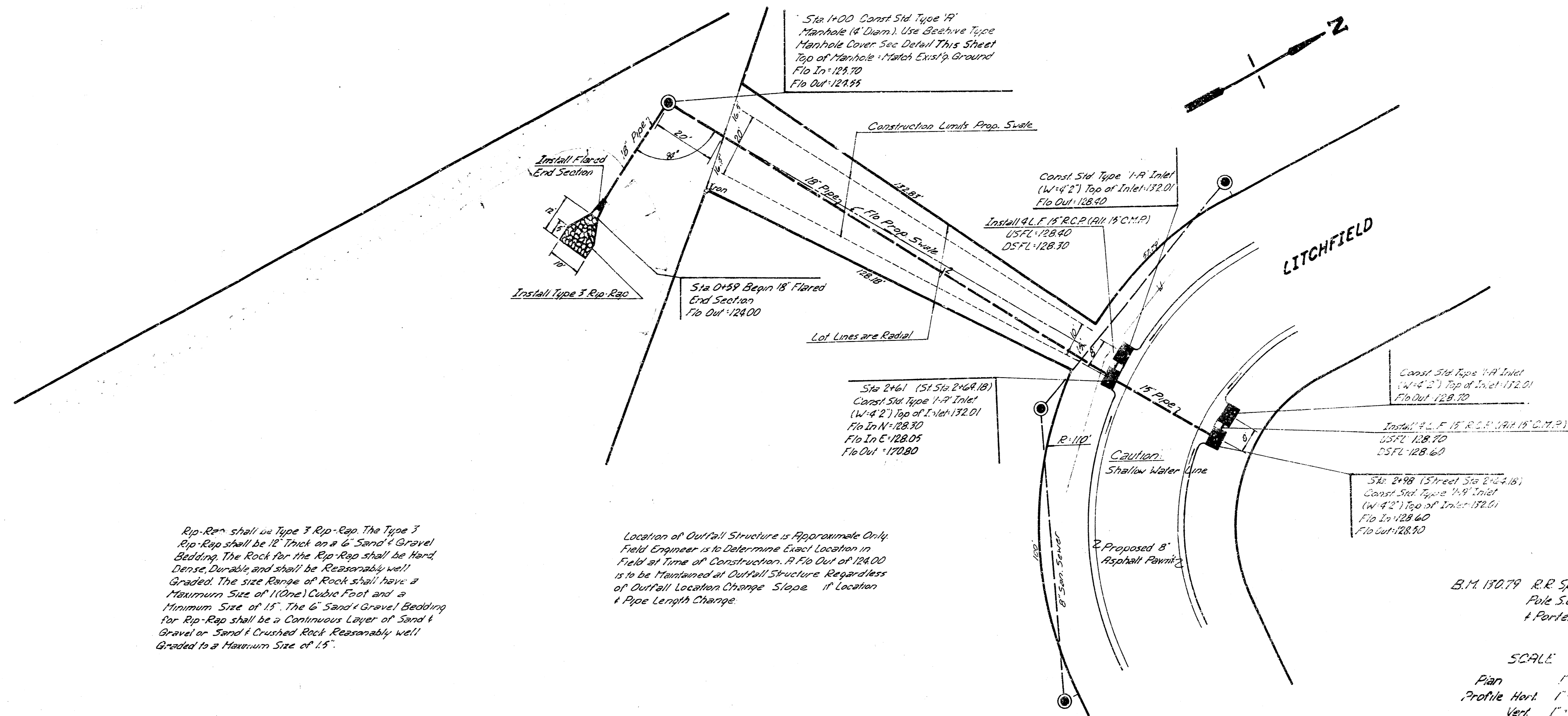
- GENERAL NOTES
1. DRAINAGE CONTRACTOR TO COORDINATE CONSTRUCTION WITH ALL OTHER CONTRACTORS IN THE ADDITION.
 2. LAKE OUTFALL IS TO BE BID AND PAID LUMP SUM. THE BID ITEM SHALL INCLUDE REGRADING DITCH, SEEDING, FERTILIZING AND CONSTRUCTING SWALE.
 3. SHALE ON LINE 1 SHALL BE BID AND PAID FOR AS L.F. DITCH CONSTRUCTION.
 4. CONTRACTOR SHALL USE CAUTION IN WORKING AROUND SHALLOW WATER LINES.
 5. THE TOPS OF INLETS AND MANHOLES AS NOTED ON THE PLANS MAY VARY SO AS TO MEET PROPOSED TOP OF CURB DEVIATIONS OR PAVEMENT ELEVATIONS. THE FIELD ENGINEER SHALL LOCATE INLETS AND MANHOLES WITH REFERENCE TO PROPOSED PAVING PLANS OF THE PERTINENT STREETS.





**DETAIL
BEEHIVE MANHOLE
COVER**

Use City of Wichita Type 1-A Inlet Manhole Ring, Beehive Grate to be Minimum R-2160-C1 or Approved Equal.

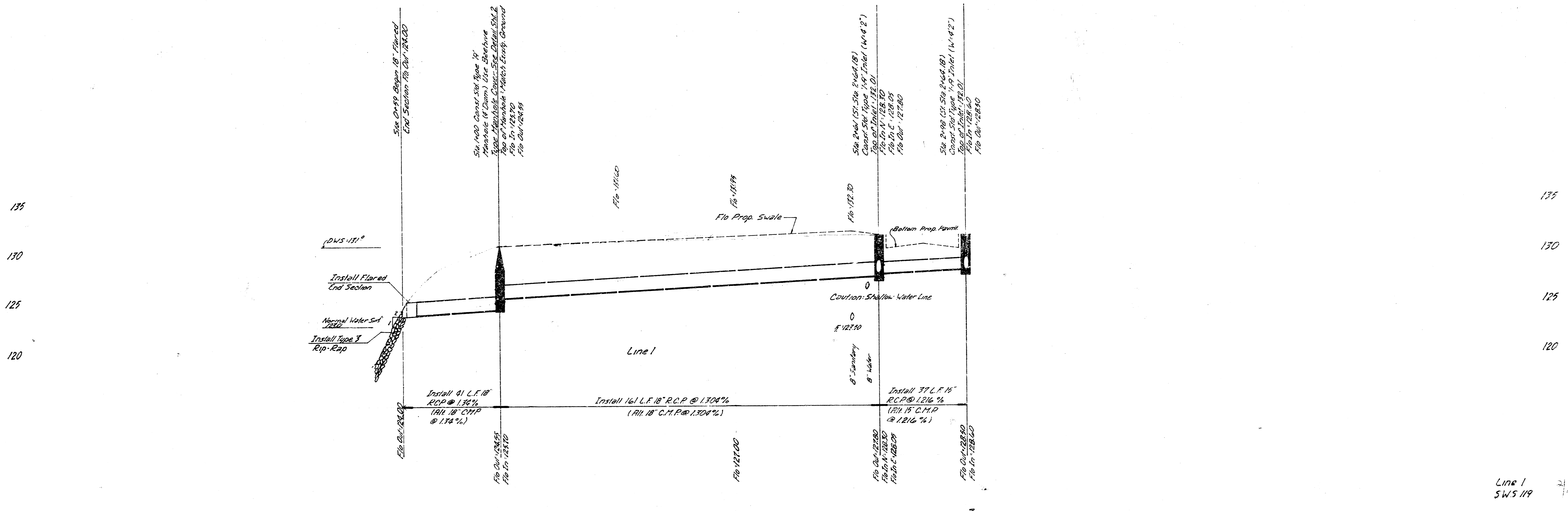


Rip-Rap shall be Type 3 Rip-Rap. The Type 3 Rip-Rap shall be 18" Thick on a 6" Sand & Gravel Bedding. The Rock for the Rip-Rap shall be Hard, Dense, Durable and shall be Reasonably well Graded. The size Range of Rock shall have a Maximum Size of 110mm (4.31") and a Minimum Size of 15". The 6" Sand & Gravel Bedding for Rip-Rap shall be a Continuous Layer of Sand & Gravel or Sand & Crushed Rock Reasonably well Graded to a Maximum Size of 15".

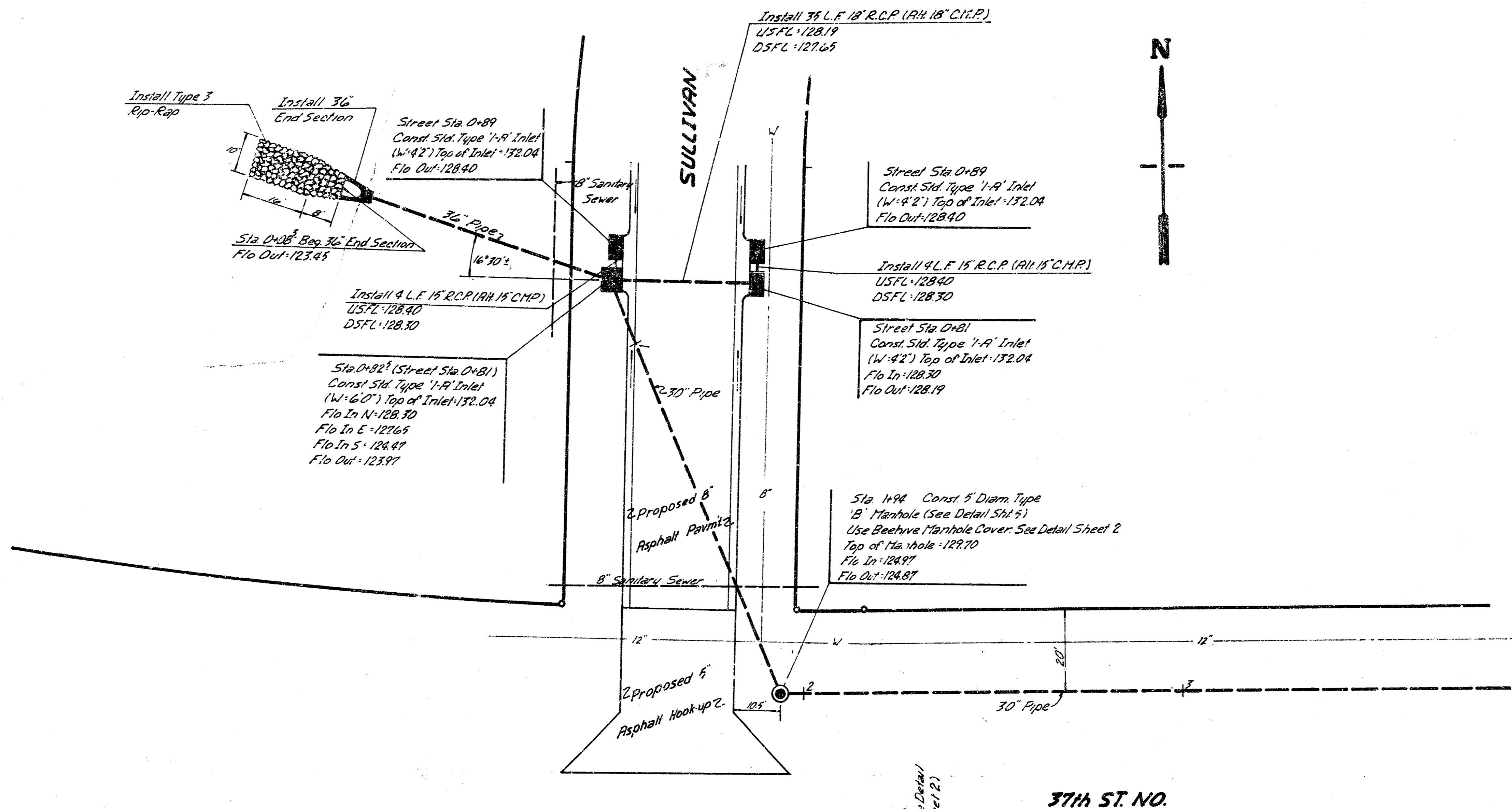
Location of Outfall Structure is Approximate Only. Field Engineer is to Determine Exact Location in Field at Time of Construction. A Flo Out of 124.00 is to be Maintained at Outfall Structure Regardless of Outfall Location Change Slope, if Location & Pipe Length Change.

B.M. 130.79 R.R. Spike N.S. Power Pole S.E. Corner 37' ± Porter

SCALE
Plan 1"=20'
Profile Horz. 1"=20'
Vert. 1"=5'

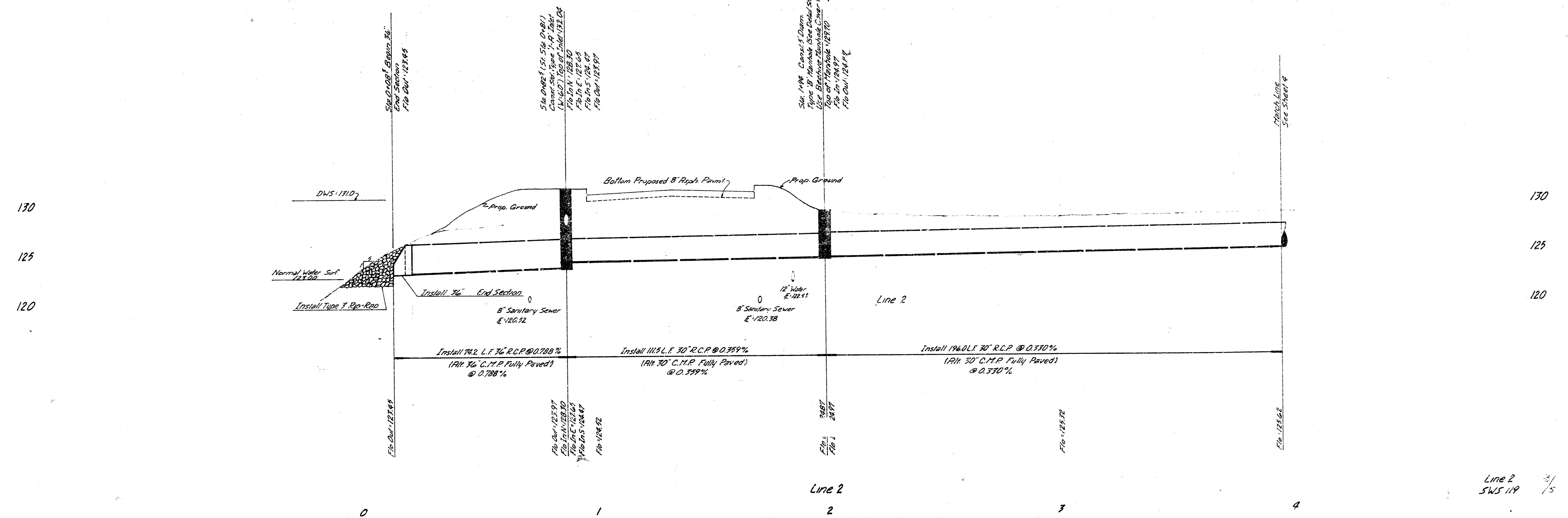


Line 1
SWS 119

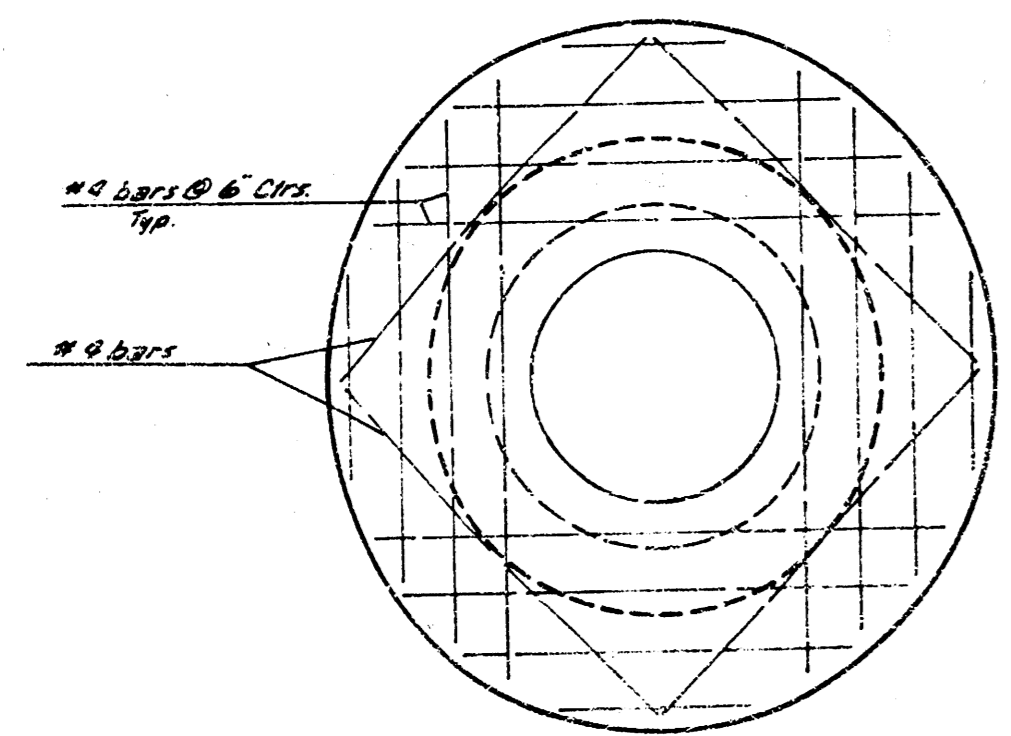
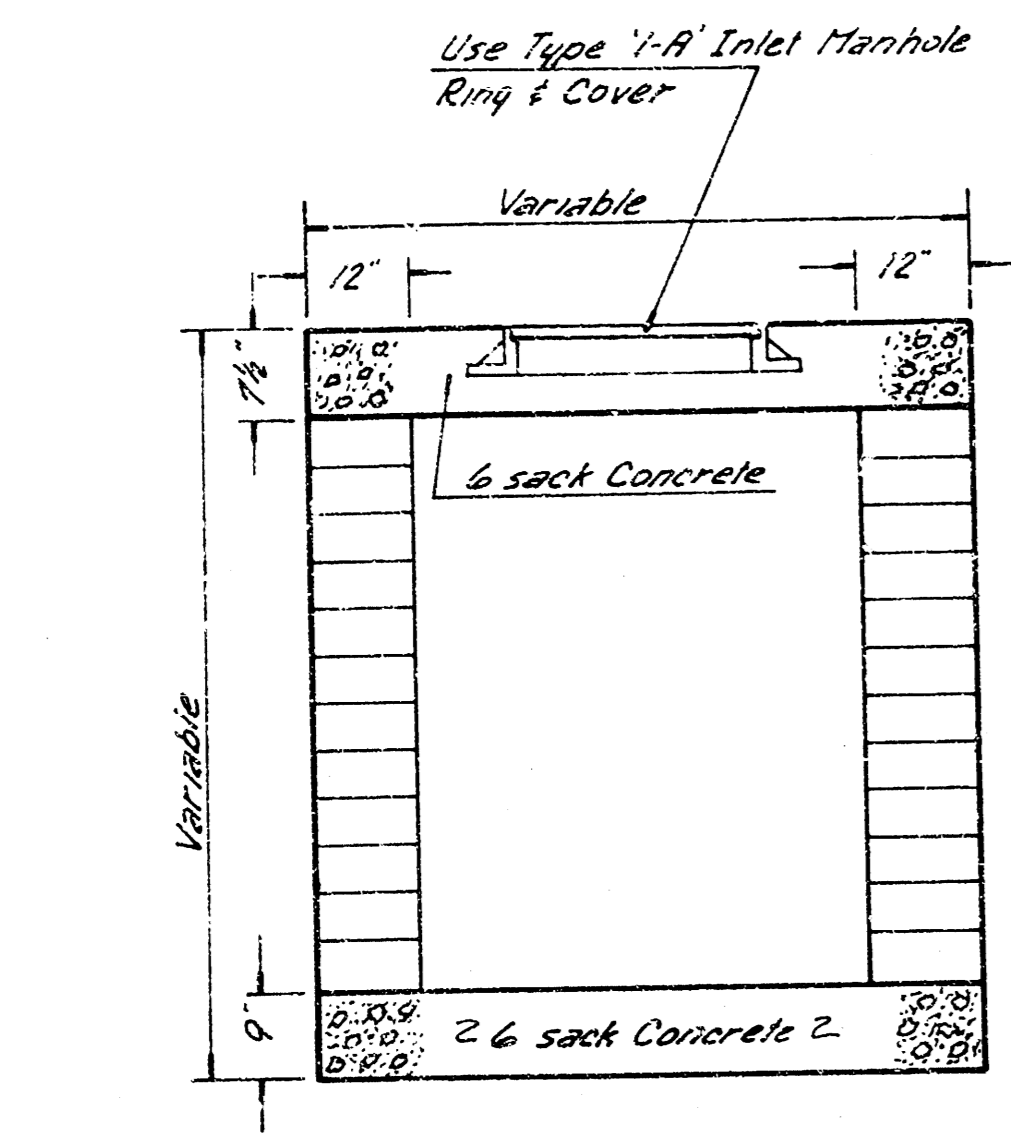


B.M. 170.79 R.R. Spike N.S. Power Pole
S.E. Corner Porter & 37th St

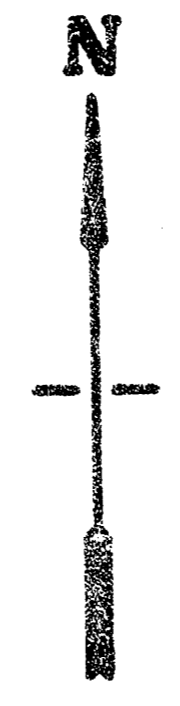
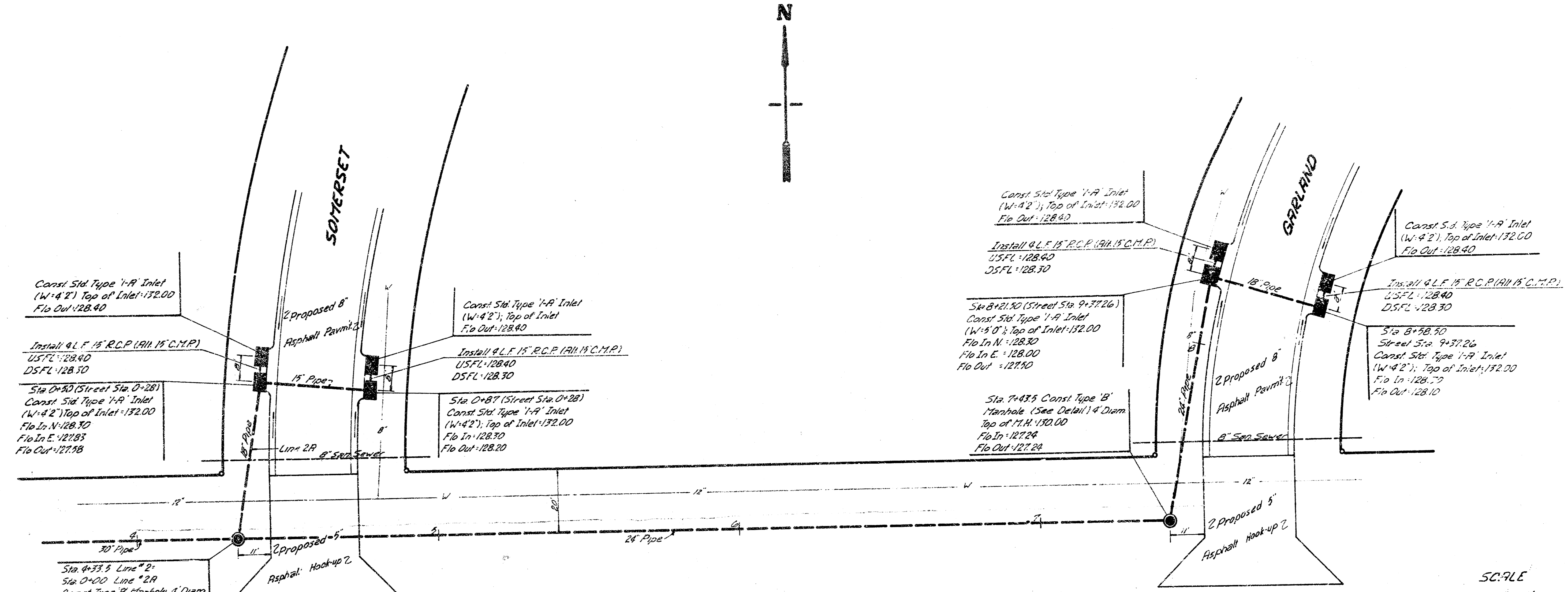
SCALE
Plan 1"=20'
Profile 1"=20'
Vert. 1"=5'



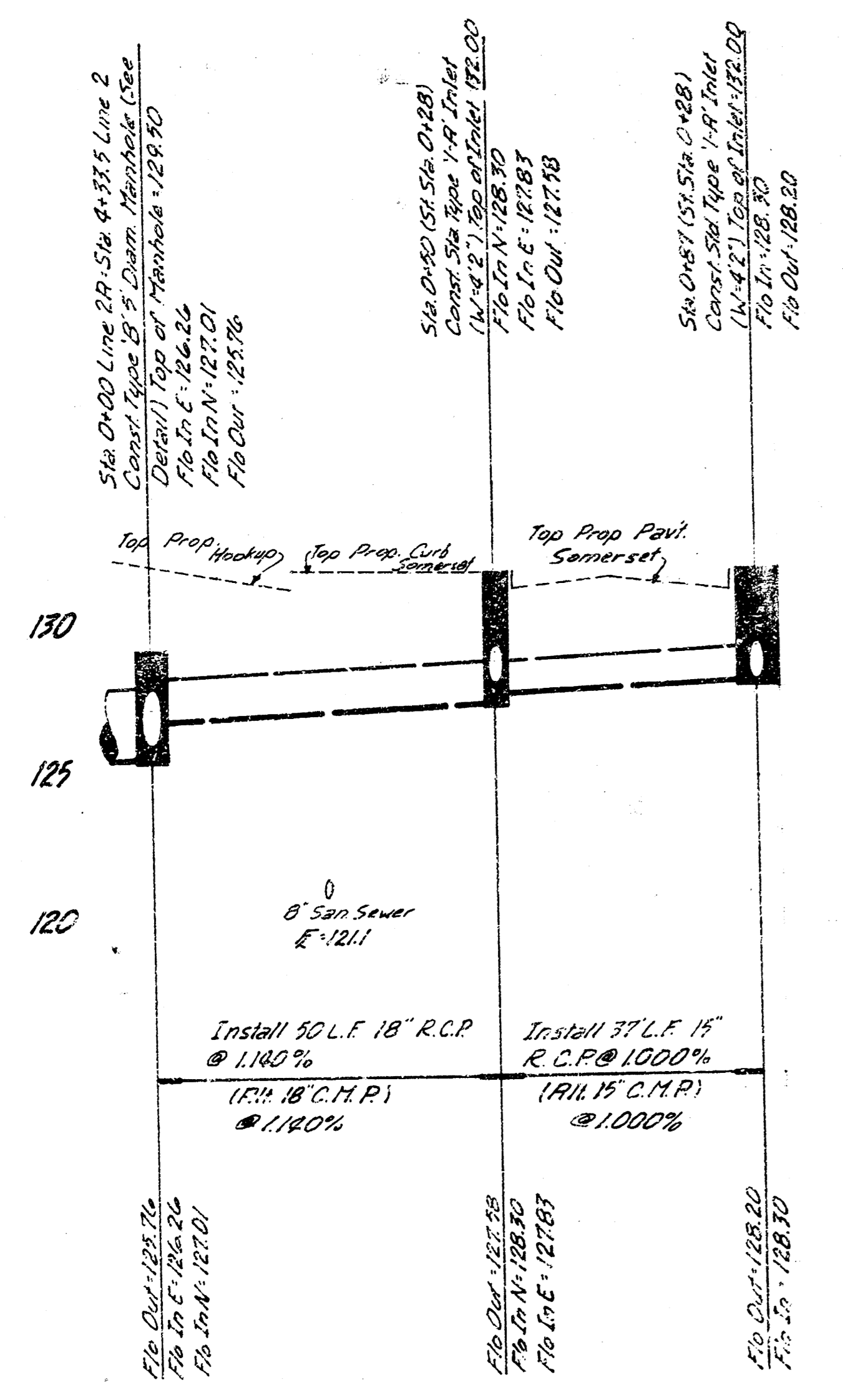
Line 2
SWS 119 3/5



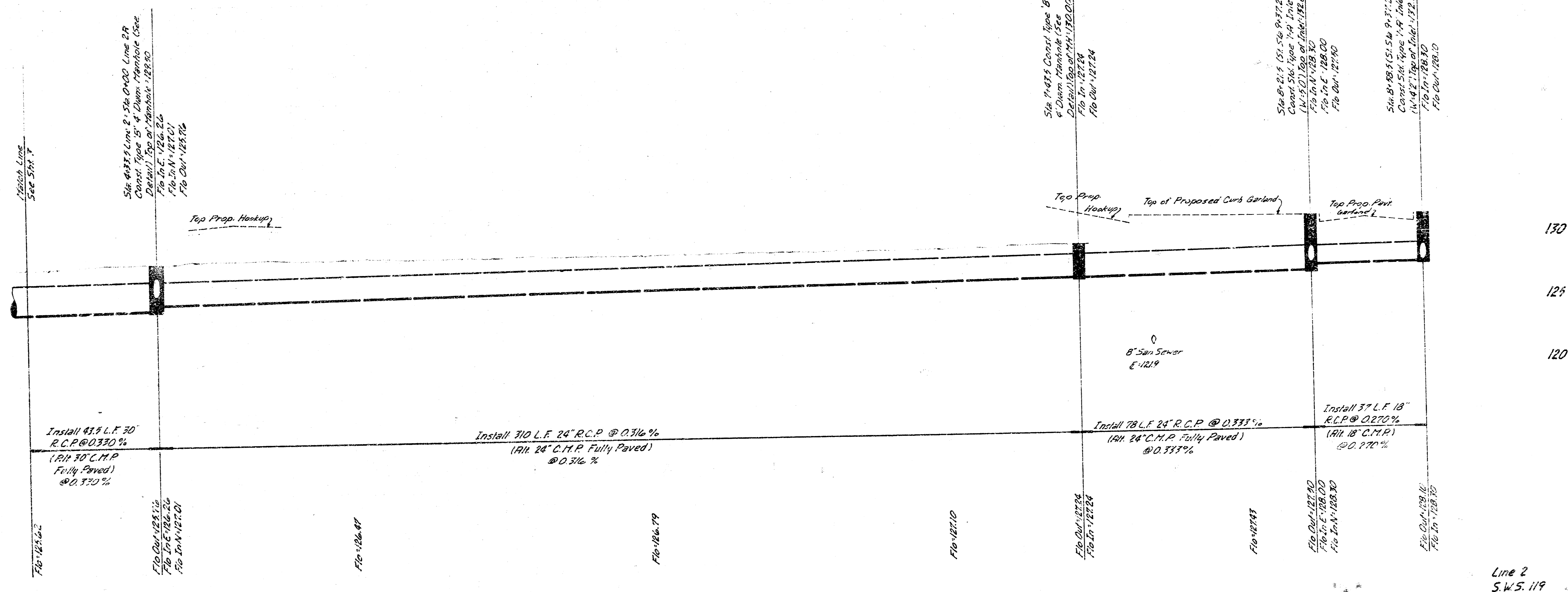
TYPE B MANHOLE DETAIL
(Precast Concrete Top)



SCALE
Plan 1"=20'
Profile Vert. 1"=20'
Vert. 1"=5'

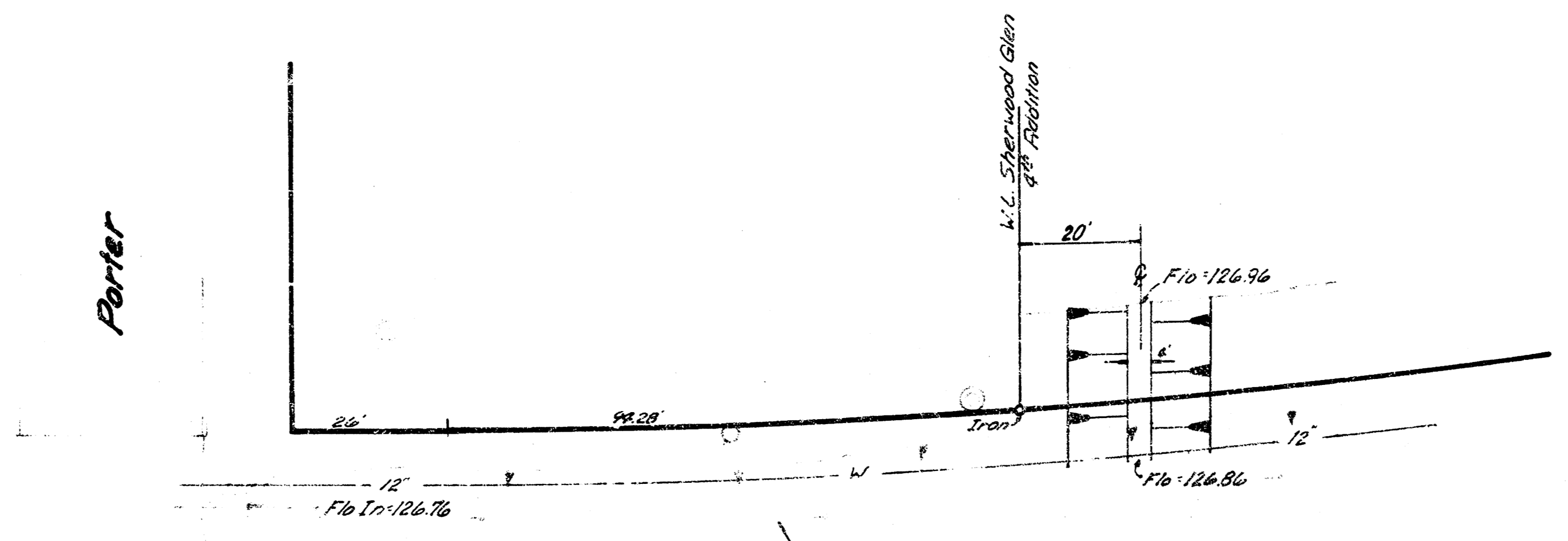


Line 2A



Line 2

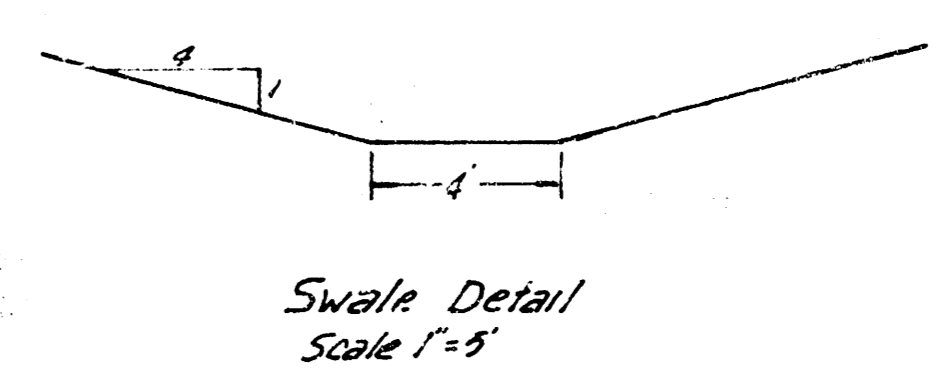
Line 2
S.W. 119



37th St. No.

Regrade Ditch as Required to
 Drain to Porter. Cost of Regrading
 Ditch, Seeding, Fertilizing and
 Constructing Swale is to be Bid's
 Paid Lump Sum as Lake Outfall.

NOTE
 Swale to be Seeded & Fertilized as
 per City of Wichita Specs.



SCALE
 Plan 1"=20'
 Profile Horiz 1"=20'
 Vert 1"=5'

170
 125

