

# STORM WATER SEWER NO. 129

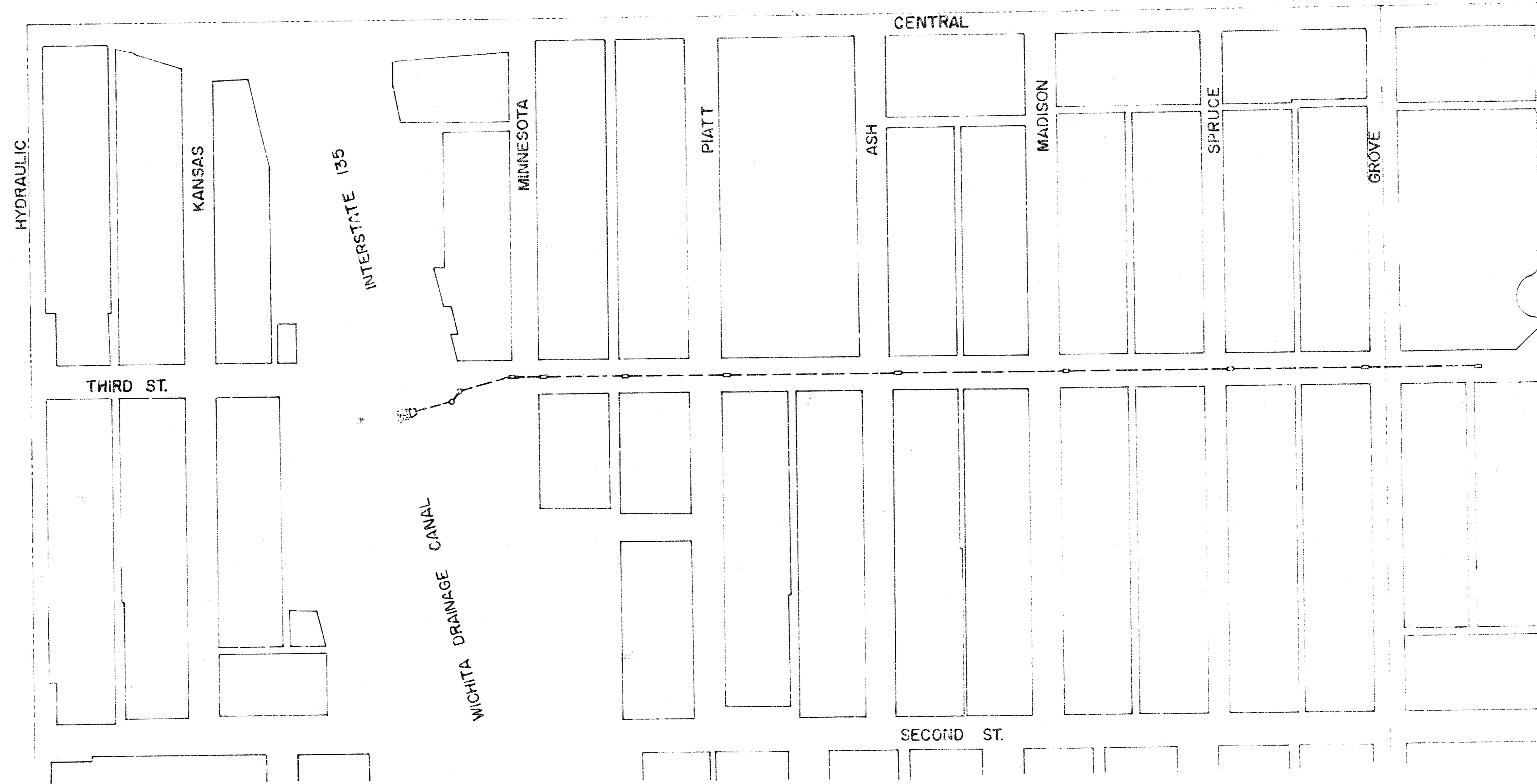
CITY OF WICHITA, KANSAS

R. W. LINN, CITY ENGINEER

PROJECT NO. DBKA 577100

DATE: \_\_\_\_\_

PROJECT NO. 468-76-245-80459-000-000-001



1. THE CITY ENGINEER HAS REVIEWED THE PLANS AND SPECIFICATIONS FOR THE PROPOSED STORM WATER SEWER NO. 129 AND HAS FOUND THEM TO BE IN ACCORDANCE WITH THE CITY ENGINEERING DEPARTMENT STANDARDS AND SPECIFICATIONS FOR STORM WATER SEWERS.

2. THE CITY ENGINEER HAS REVIEWED THE PLANS AND SPECIFICATIONS FOR THE PROPOSED STORM WATER SEWER NO. 129 AND HAS FOUND THEM TO BE IN ACCORDANCE WITH THE CITY ENGINEERING DEPARTMENT STANDARDS AND SPECIFICATIONS FOR STORM WATER SEWERS.

3. THE CITY ENGINEER HAS REVIEWED THE PLANS AND SPECIFICATIONS FOR THE PROPOSED STORM WATER SEWER NO. 129 AND HAS FOUND THEM TO BE IN ACCORDANCE WITH THE CITY ENGINEERING DEPARTMENT STANDARDS AND SPECIFICATIONS FOR STORM WATER SEWERS.

4. THE CITY ENGINEER HAS REVIEWED THE PLANS AND SPECIFICATIONS FOR THE PROPOSED STORM WATER SEWER NO. 129 AND HAS FOUND THEM TO BE IN ACCORDANCE WITH THE CITY ENGINEERING DEPARTMENT STANDARDS AND SPECIFICATIONS FOR STORM WATER SEWERS.

5. THE CITY ENGINEER HAS REVIEWED THE PLANS AND SPECIFICATIONS FOR THE PROPOSED STORM WATER SEWER NO. 129 AND HAS FOUND THEM TO BE IN ACCORDANCE WITH THE CITY ENGINEERING DEPARTMENT STANDARDS AND SPECIFICATIONS FOR STORM WATER SEWERS.

6. THE CITY ENGINEER HAS REVIEWED THE PLANS AND SPECIFICATIONS FOR THE PROPOSED STORM WATER SEWER NO. 129 AND HAS FOUND THEM TO BE IN ACCORDANCE WITH THE CITY ENGINEERING DEPARTMENT STANDARDS AND SPECIFICATIONS FOR STORM WATER SEWERS.

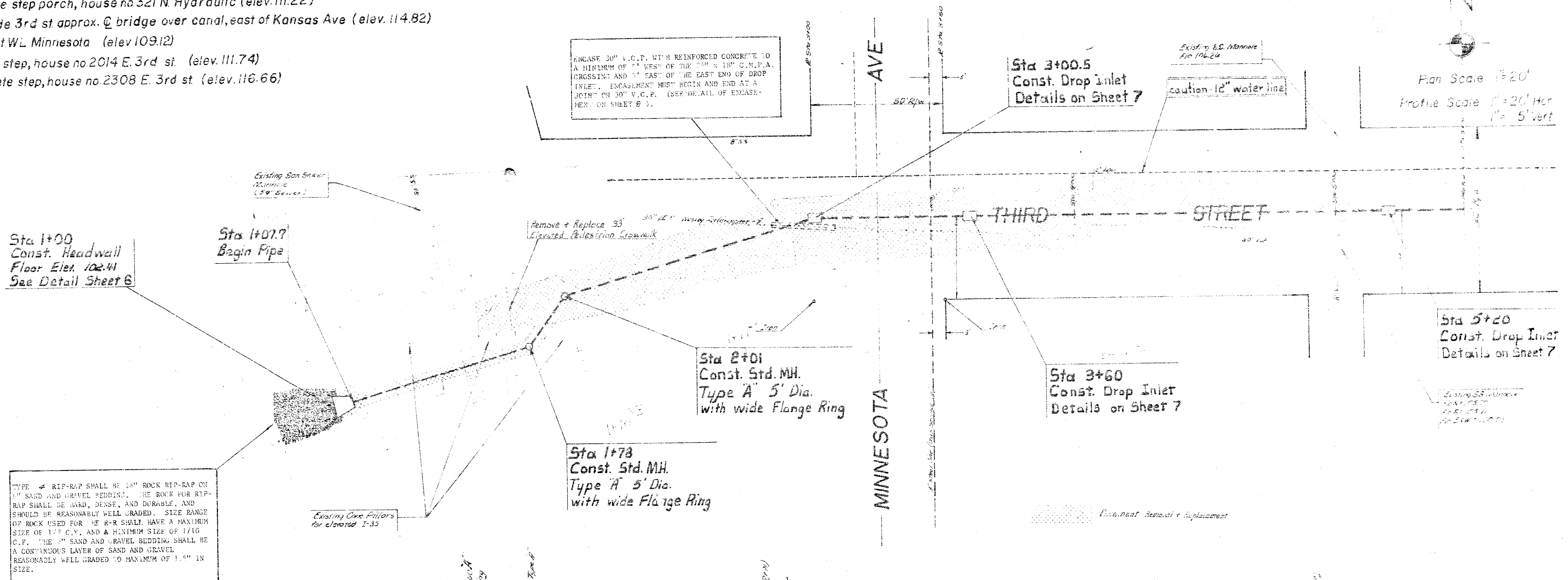
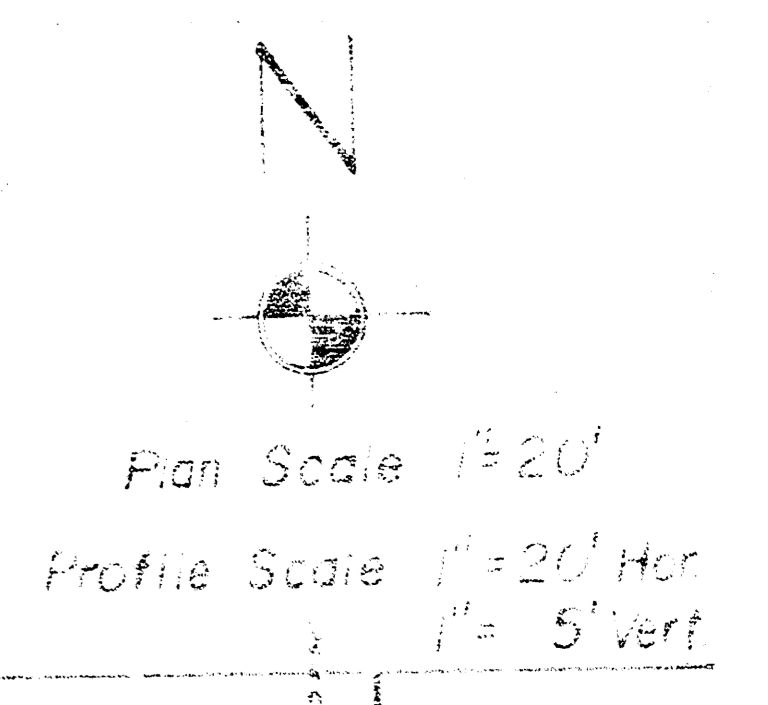
7. THE CITY ENGINEER HAS REVIEWED THE PLANS AND SPECIFICATIONS FOR THE PROPOSED STORM WATER SEWER NO. 129 AND HAS FOUND THEM TO BE IN ACCORDANCE WITH THE CITY ENGINEERING DEPARTMENT STANDARDS AND SPECIFICATIONS FOR STORM WATER SEWERS.

8. THE CITY ENGINEER HAS REVIEWED THE PLANS AND SPECIFICATIONS FOR THE PROPOSED STORM WATER SEWER NO. 129 AND HAS FOUND THEM TO BE IN ACCORDANCE WITH THE CITY ENGINEERING DEPARTMENT STANDARDS AND SPECIFICATIONS FOR STORM WATER SEWERS.

9. THE CITY ENGINEER HAS REVIEWED THE PLANS AND SPECIFICATIONS FOR THE PROPOSED STORM WATER SEWER NO. 129 AND HAS FOUND THEM TO BE IN ACCORDANCE WITH THE CITY ENGINEERING DEPARTMENT STANDARDS AND SPECIFICATIONS FOR STORM WATER SEWERS.

10. THE CITY ENGINEER HAS REVIEWED THE PLANS AND SPECIFICATIONS FOR THE PROPOSED STORM WATER SEWER NO. 129 AND HAS FOUND THEM TO BE IN ACCORDANCE WITH THE CITY ENGINEERING DEPARTMENT STANDARDS AND SPECIFICATIONS FOR STORM WATER SEWERS.

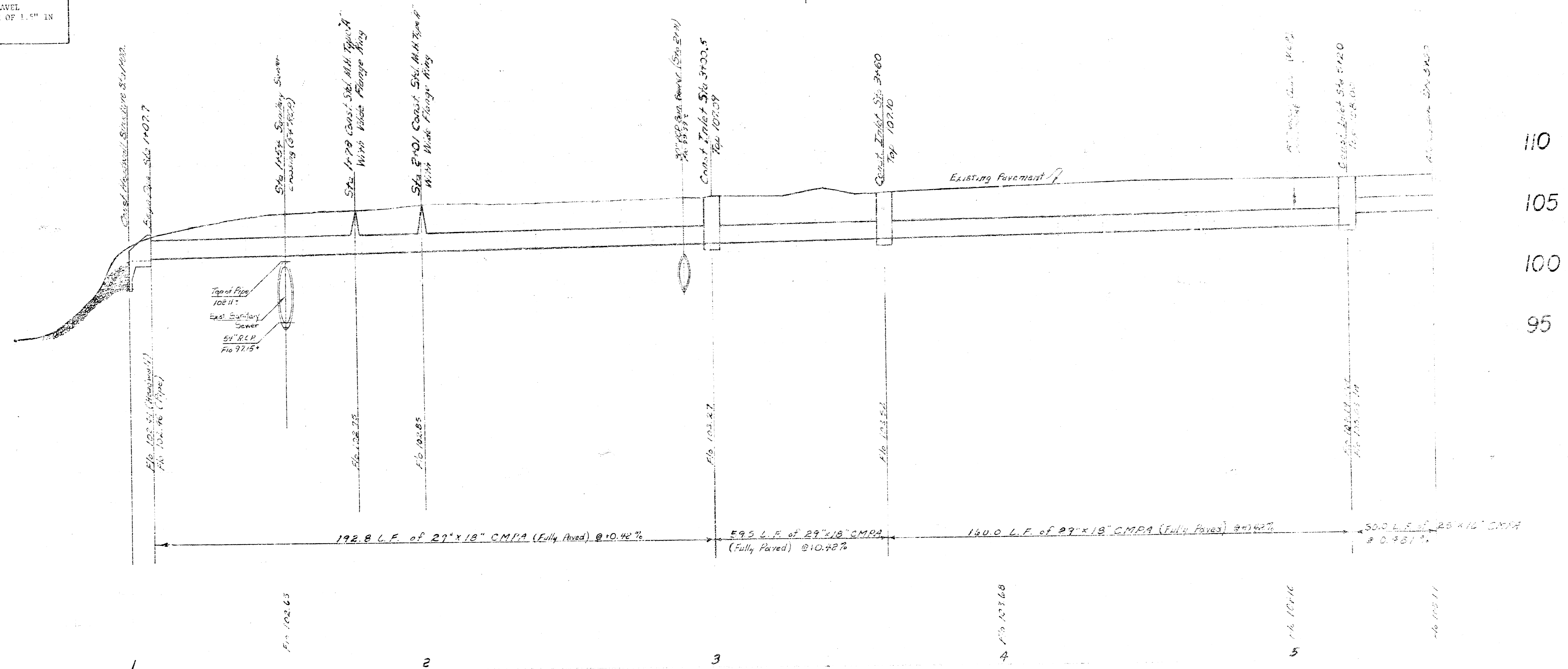
BM SE corner base of concrete step porch, house no 321 N. Hydraulic (elev. 111.22)  
 BM "□" surface walk south side 3rd st approx. @ bridge over canal, east of Kansas Ave (elev. 114.82)  
 BM "□" top north curb 3rd st. at WL Minnesota (elev. 109.12)  
 BM SE corner base of concrete step, house no 2014 E. 3rd st. (elev. 111.74)  
 BM SW corner bottom of concrete step, house no 2308 E. 3rd st. (elev. 116.66)



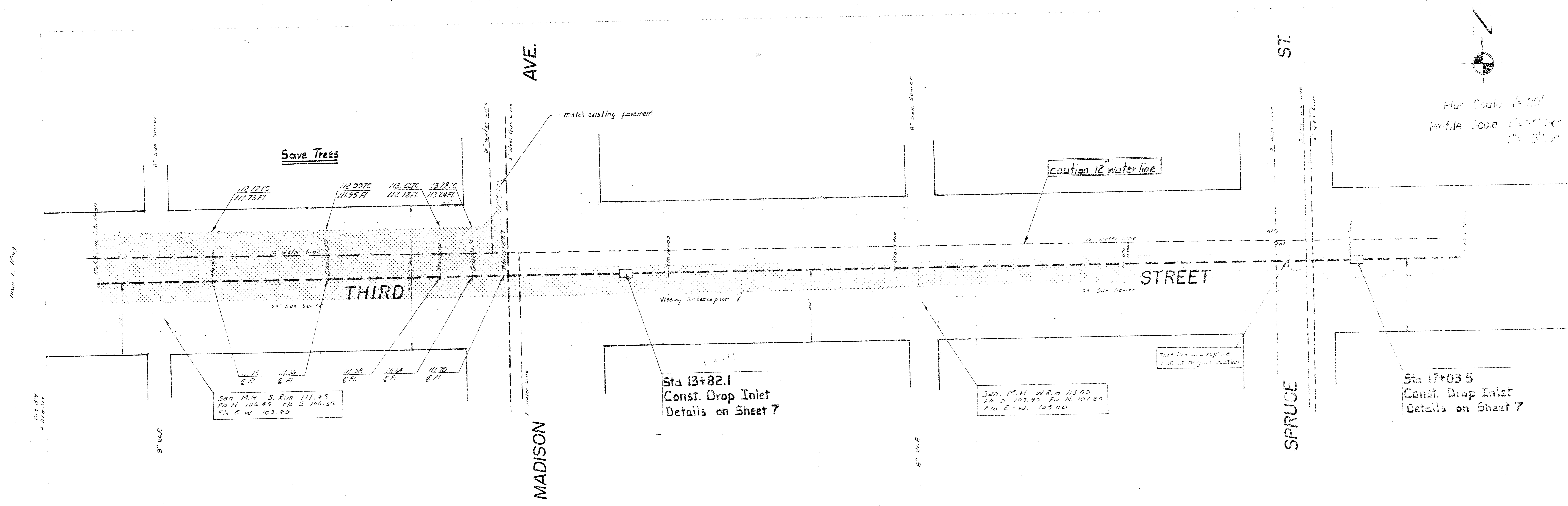
TYPE "A" RIP-RAP SHALL BE 1 1/2" ROCK RIP-RAP ON 1" SAND AND GRAVEL BEDDING. THE ROCK FOR RIP-RAP SHALL BE HARD, DENSE, AND DURABLE, AND SHOULD BE REASONABLY WELL GRADED. SIZE RANGE OF ROCK USED FOR "A" R-R SHALL HAVE A MAXIMUM SIZE OF 1 1/2" C.V. AND A MINIMUM SIZE OF 7/16" C.V. THE "A" SAND AND GRAVEL BEDDING SHALL BE A CONTINUOUS LAYER OF SAND AND GRAVEL REASONABLY WELL GRADED TO MAXIMUM OF 1.5" IN SIZE.

105  
100  
95

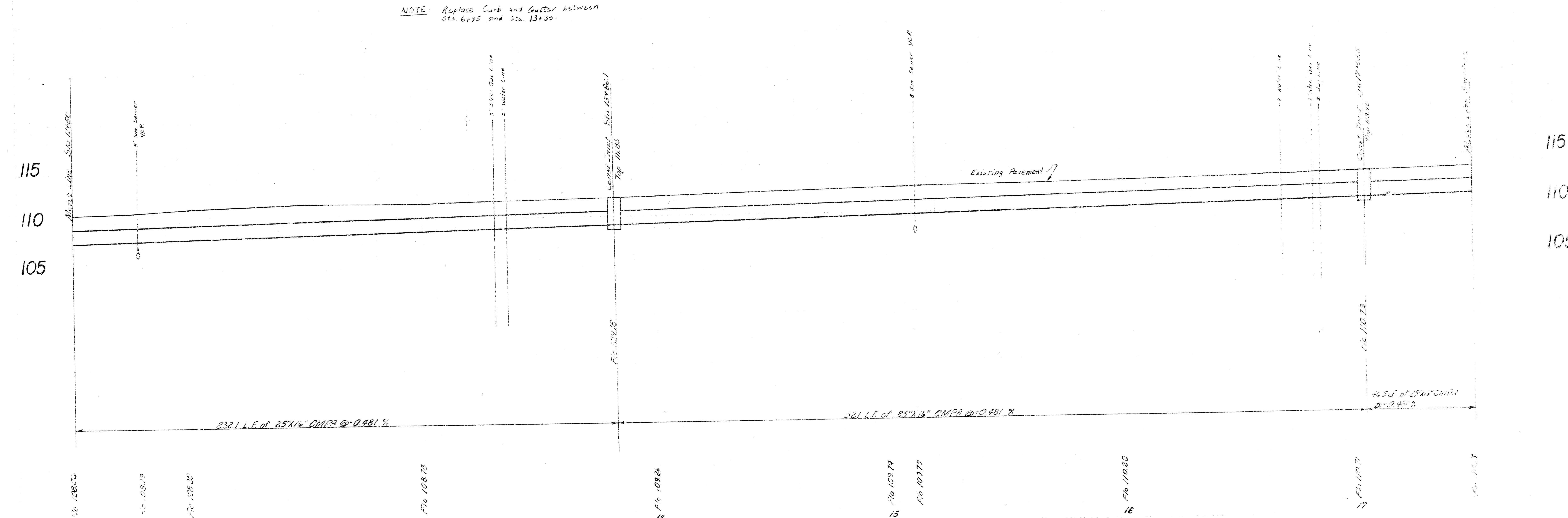
110  
105  
100  
95

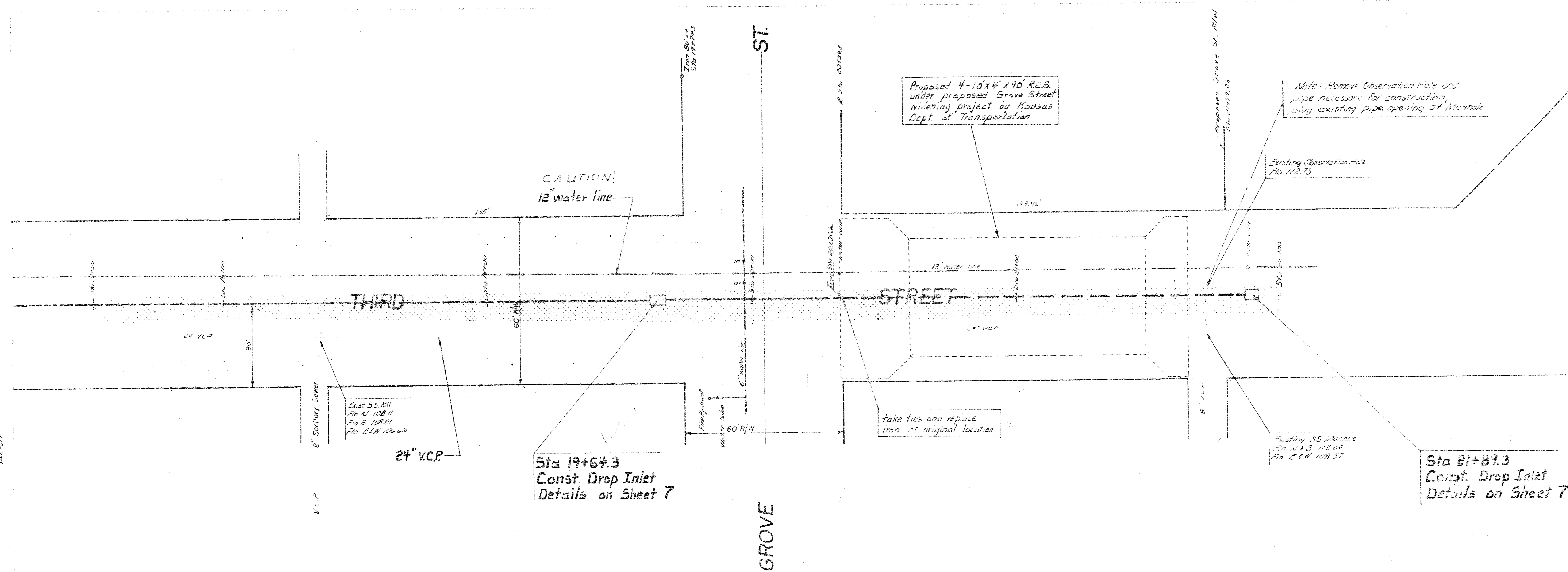




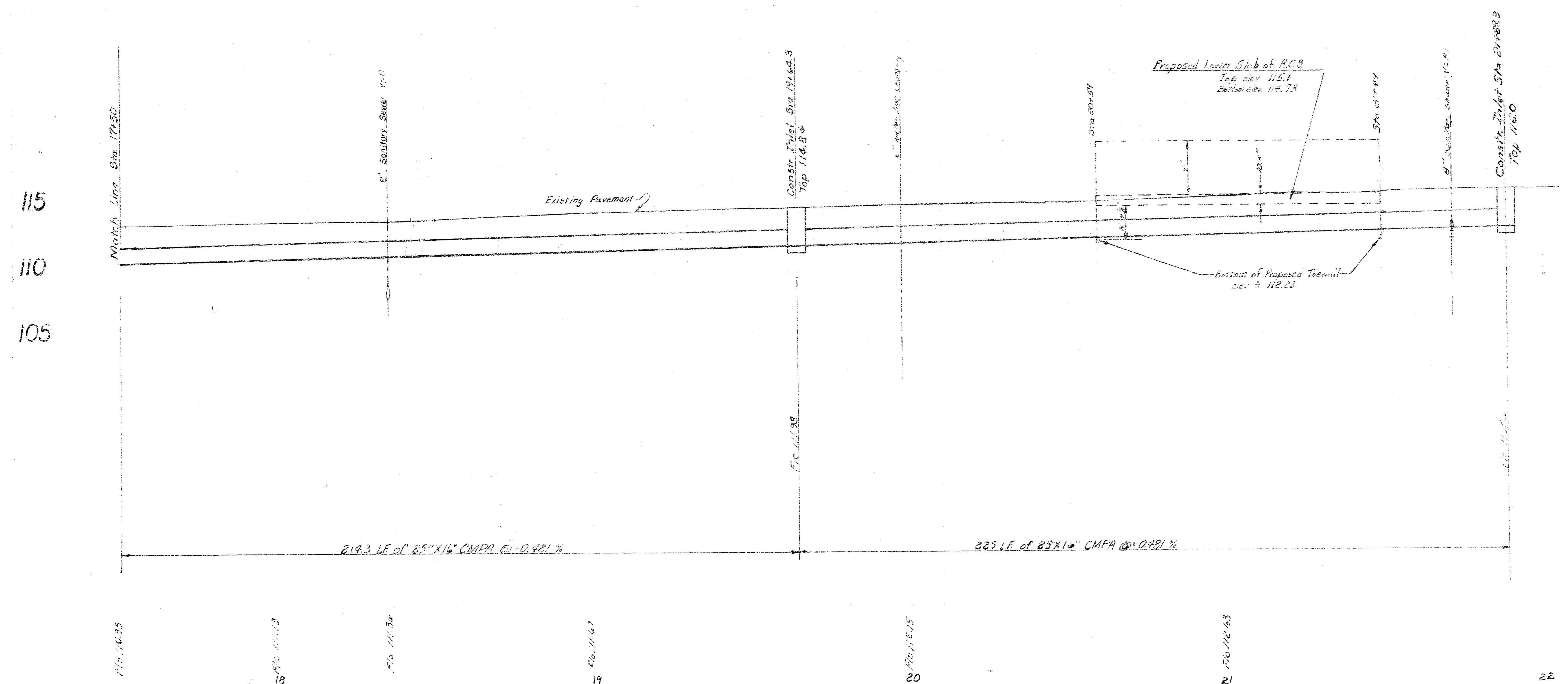


Plan Scale 1"=50'  
Profile Scale 1"=5' V.E.R.  
1"=5' H.S.

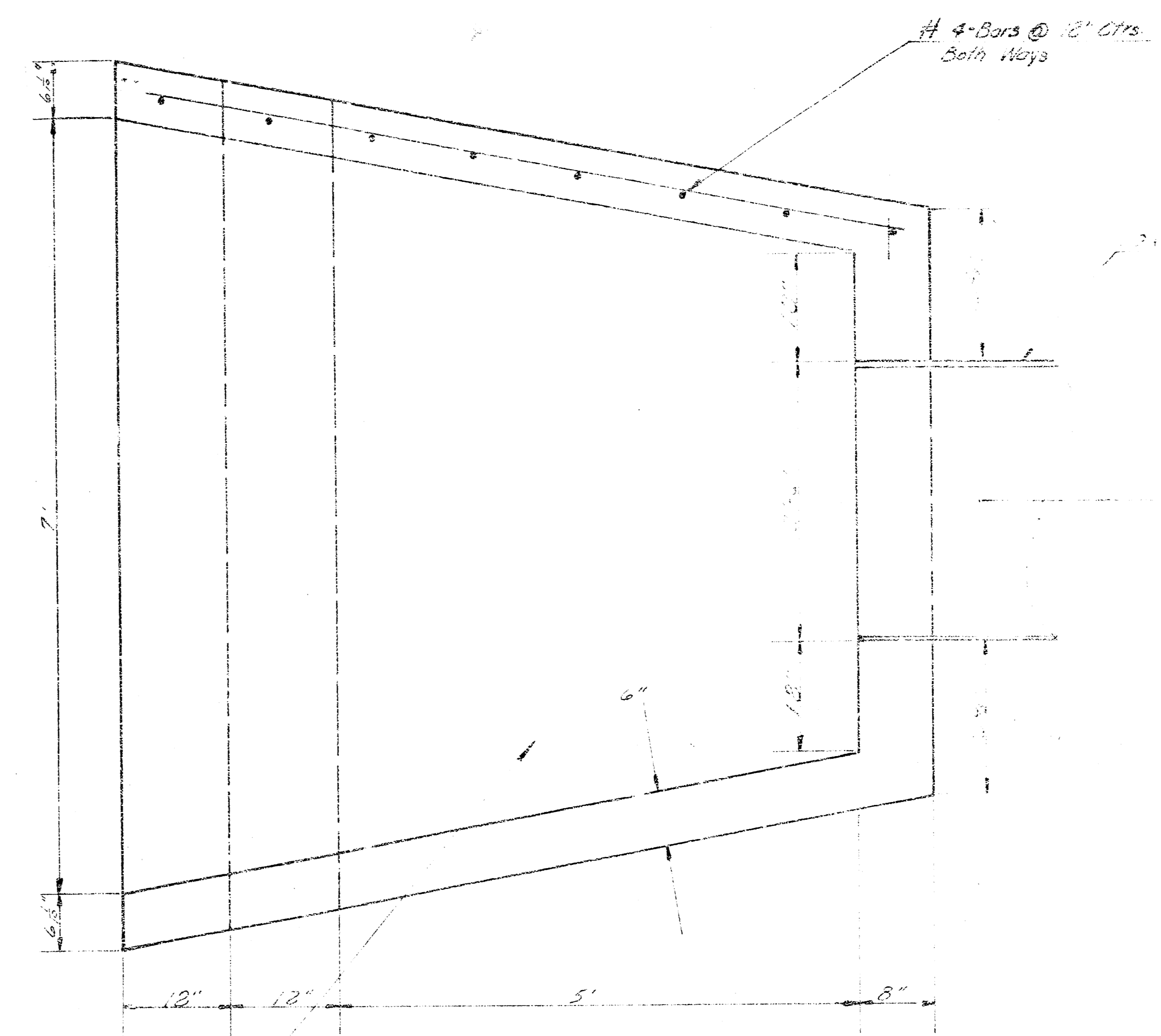




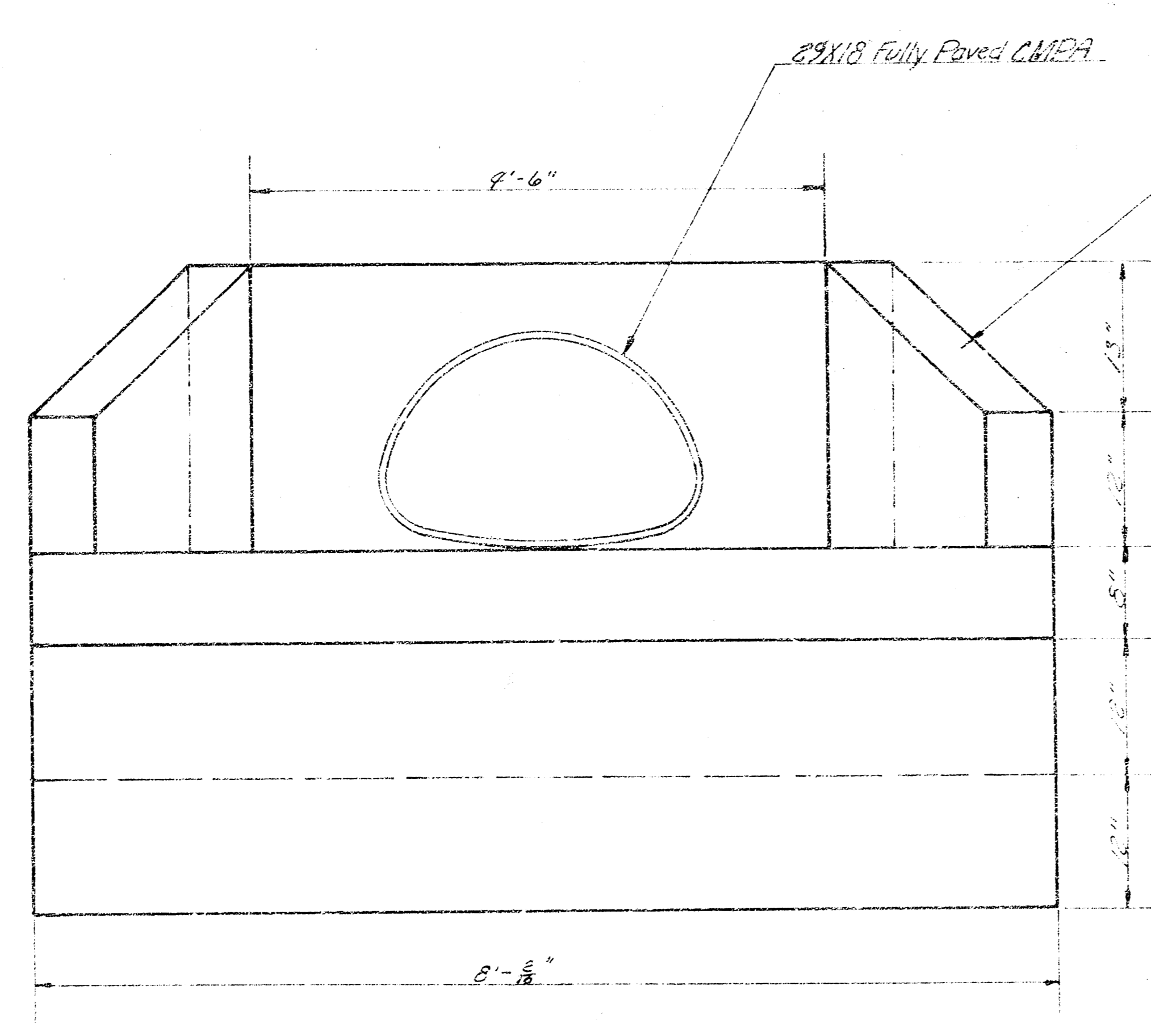
Plan Scale: 1" = 20'  
 Profile Scale: 1" = 20' Hor  
 1" = 5' Vert.



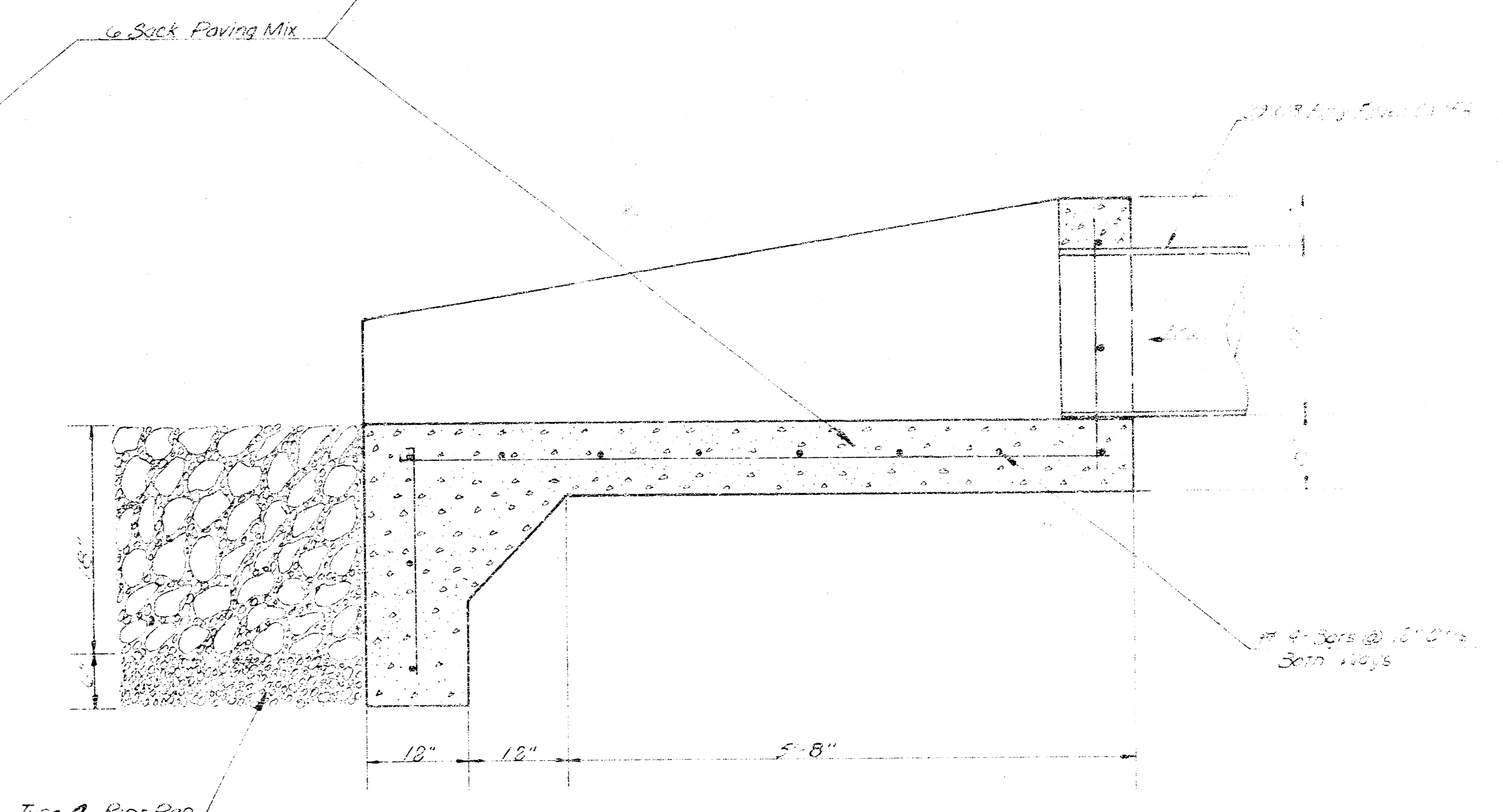
HEADWALL  
 DETAIL  
 SCALE: 1"=1'



PLAN



FRONT



SECTION

