

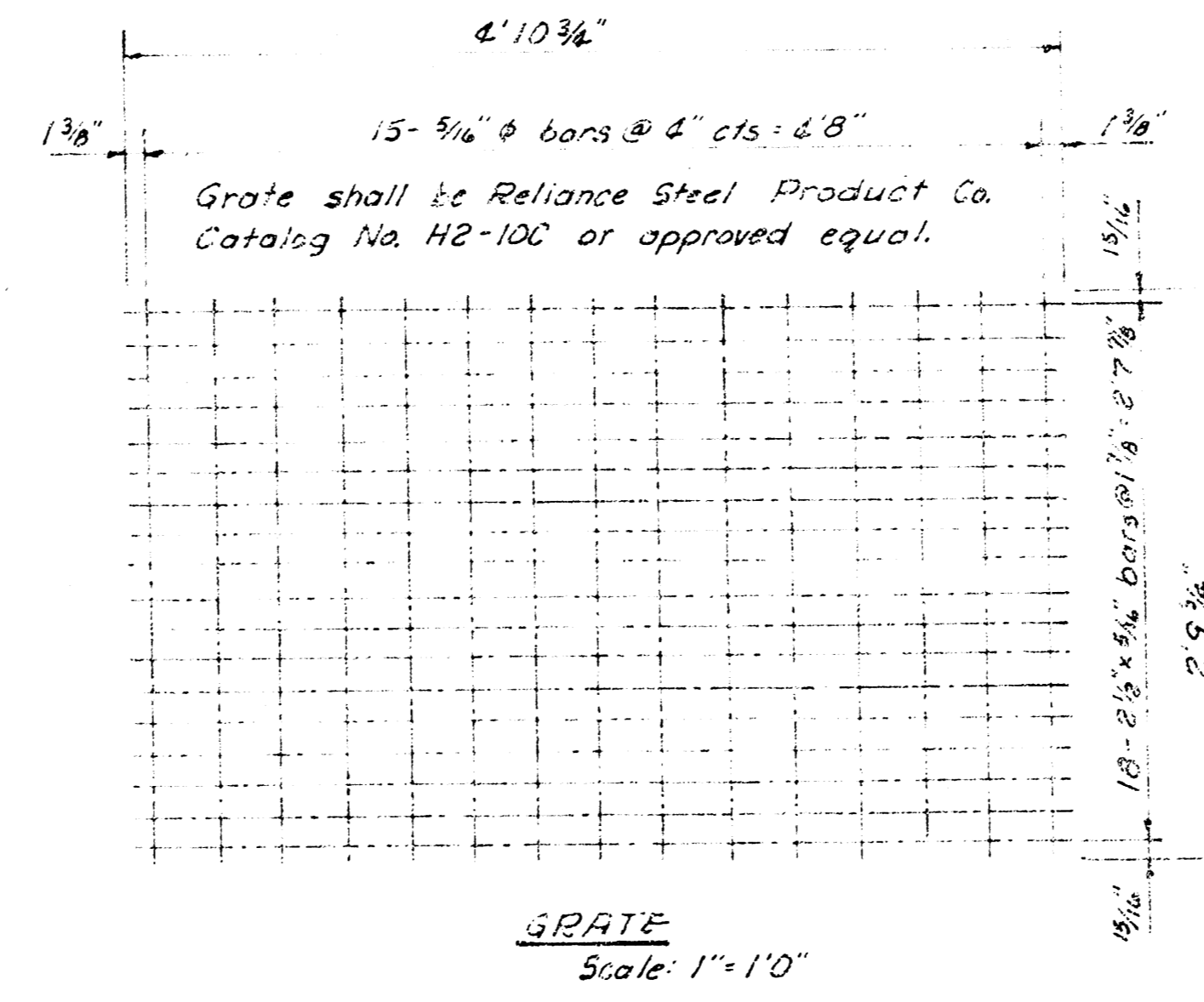
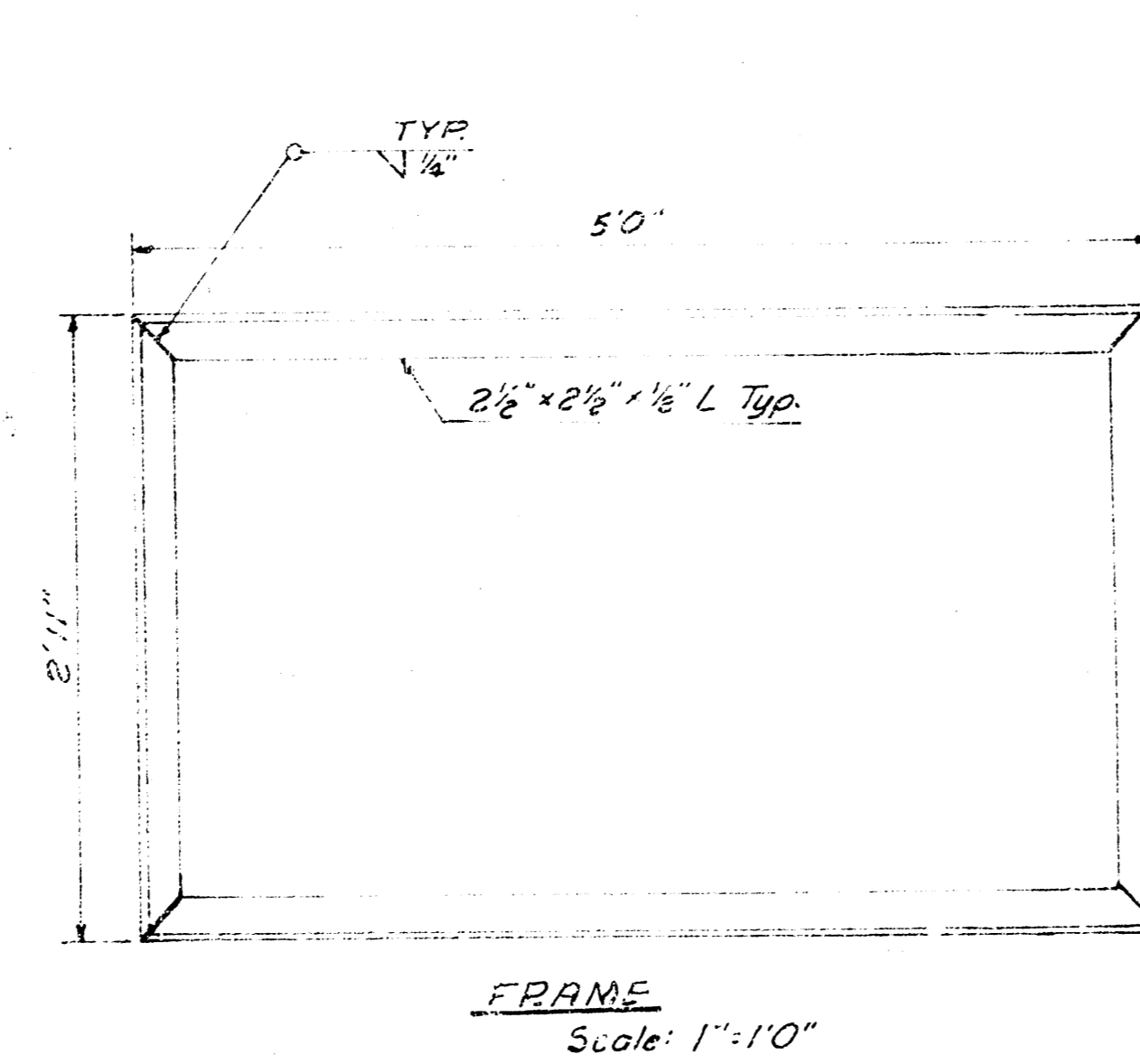
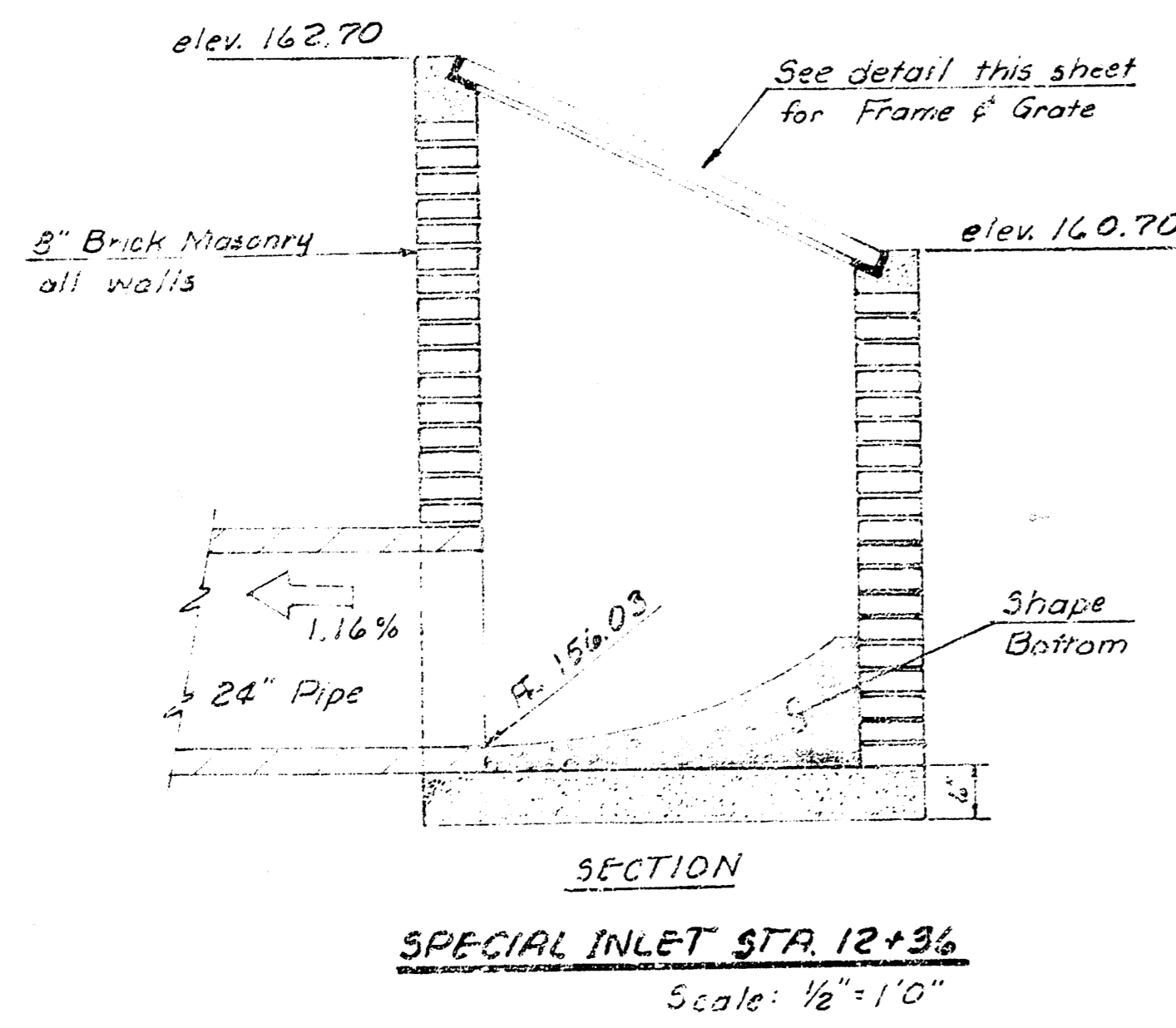
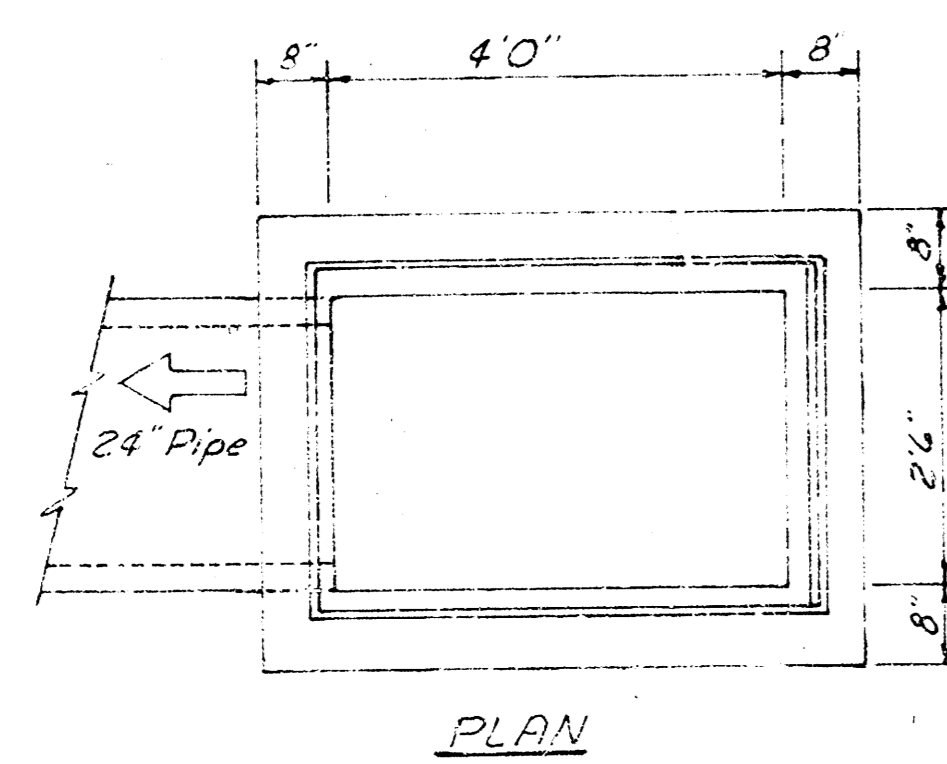
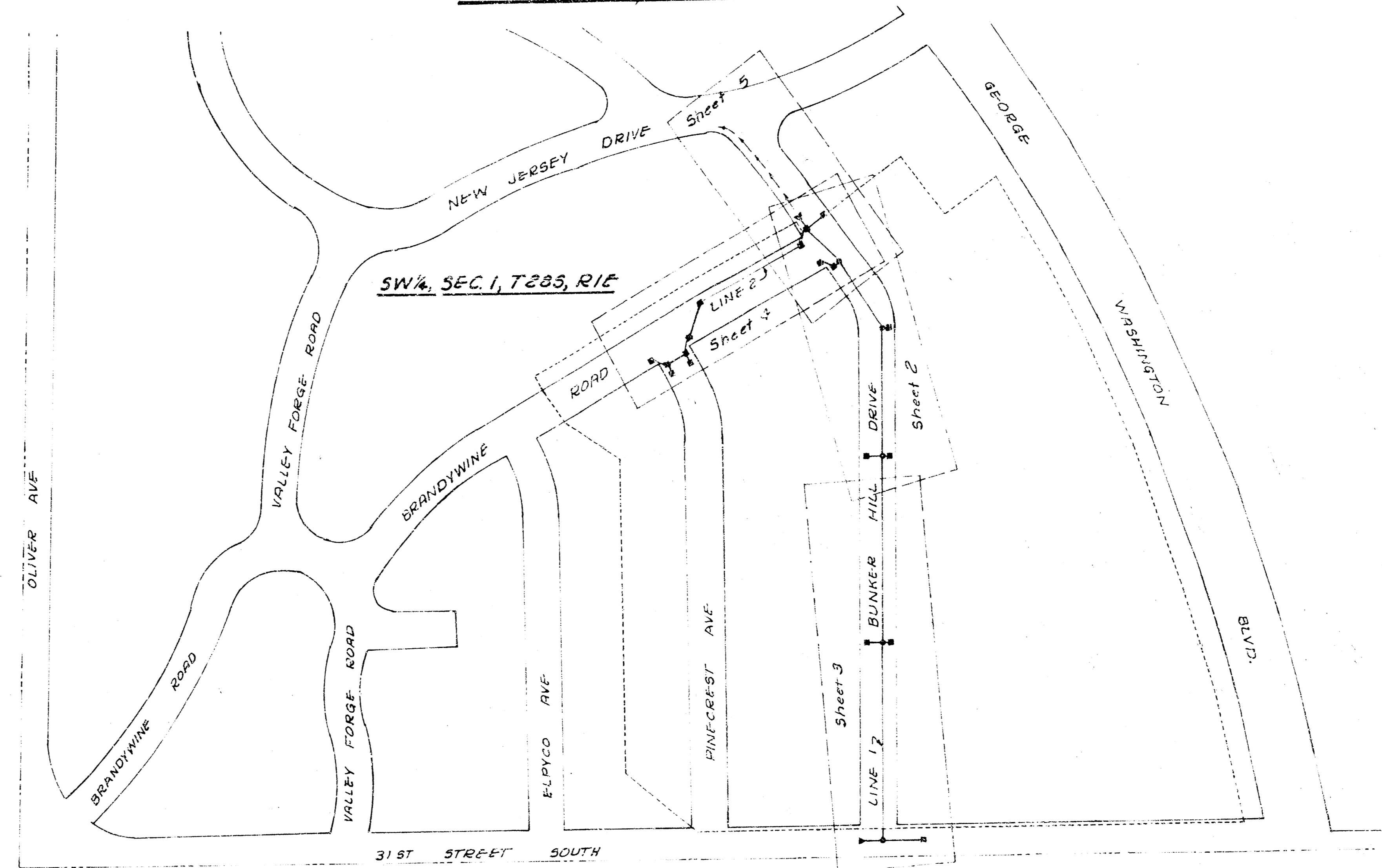
STORM WATER SEWER NO. 130

CITY OF WICHITA, KANSAS

R. W. LINN, CITY ENGINEER

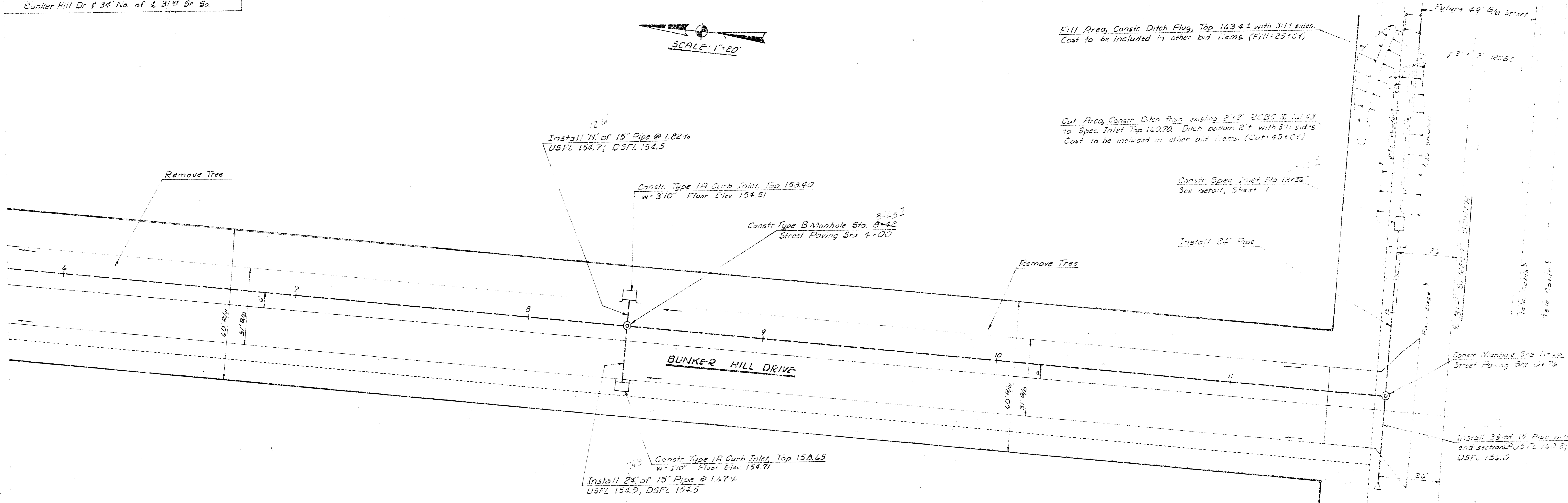
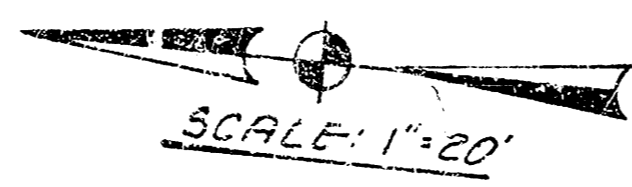
PROJECT NO. DBKA 577095

DATE: Jan. 27, 1978



BY
DATE
PROJECT
DESCRIPTION
SCALE
NO. OF SHEETS
SHEET NO.

BM 144.50 R.R. Spk. So. Face RR 70' West of W.L.
Bunker Hill Dr. f 34' No. of E 31st St So.



Fill Area, Constr. Ditch Plug, Top 143.42 with 3:1:1 sides.
Cost to be included in other bid items (Fill=25+CY)

Cut Area, Constr. Ditch from existing 2'x8" RCP to 15" Spec Inlet Top 140.70. Ditch bottom 2'3" with 3:1:1 sides.
Cost to be included in other bid items (Cut=45+CY)

Constr. Spec Inlet Sta 10+36
See detail, Sheet 1

Install 24" Pipe

Future 49' St So

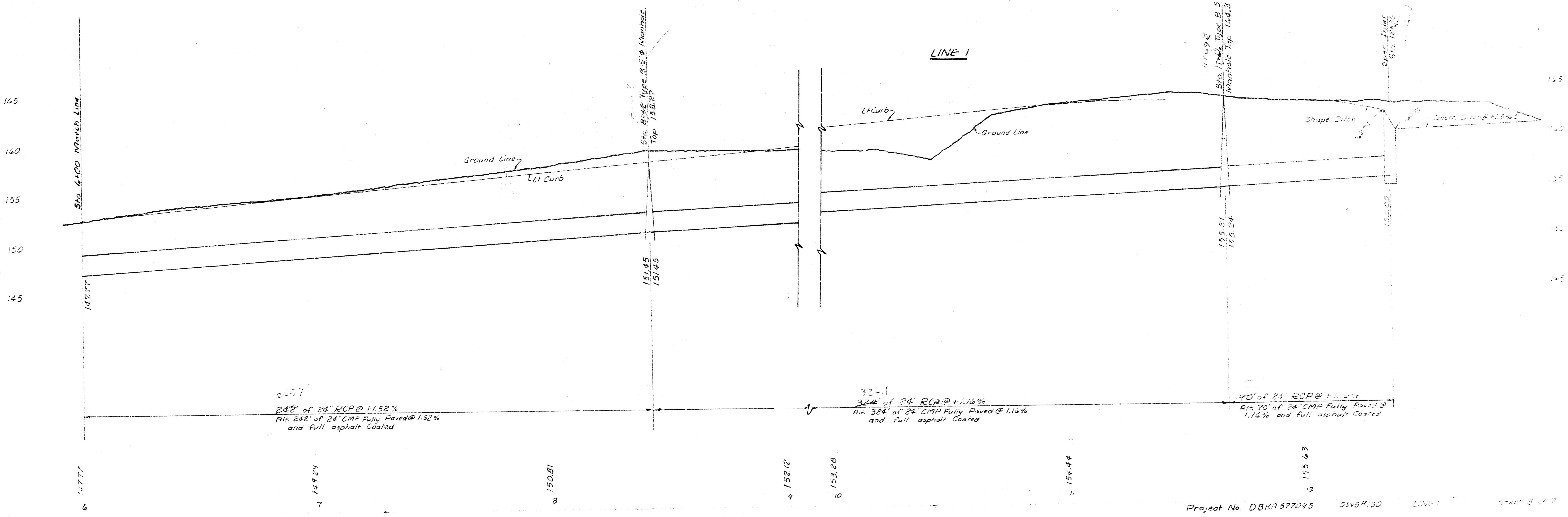
1'x2'x2' RCP

2'x2'x2' RCP

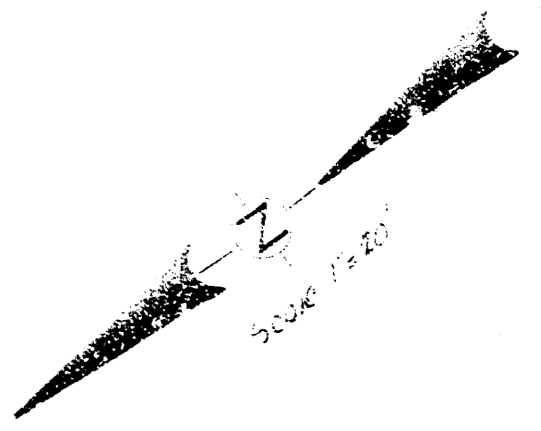
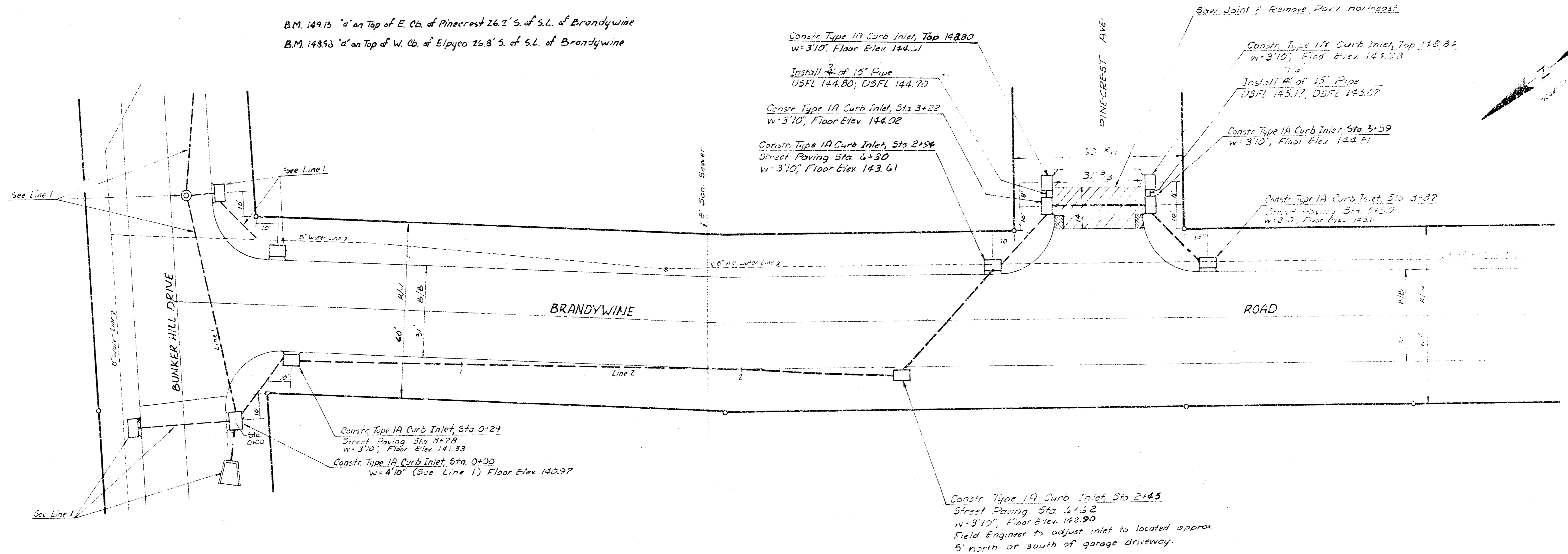
2'x2'x2' RCP

Constr. Manhole Sta. 11+44
Street Paving Sta. 7+70

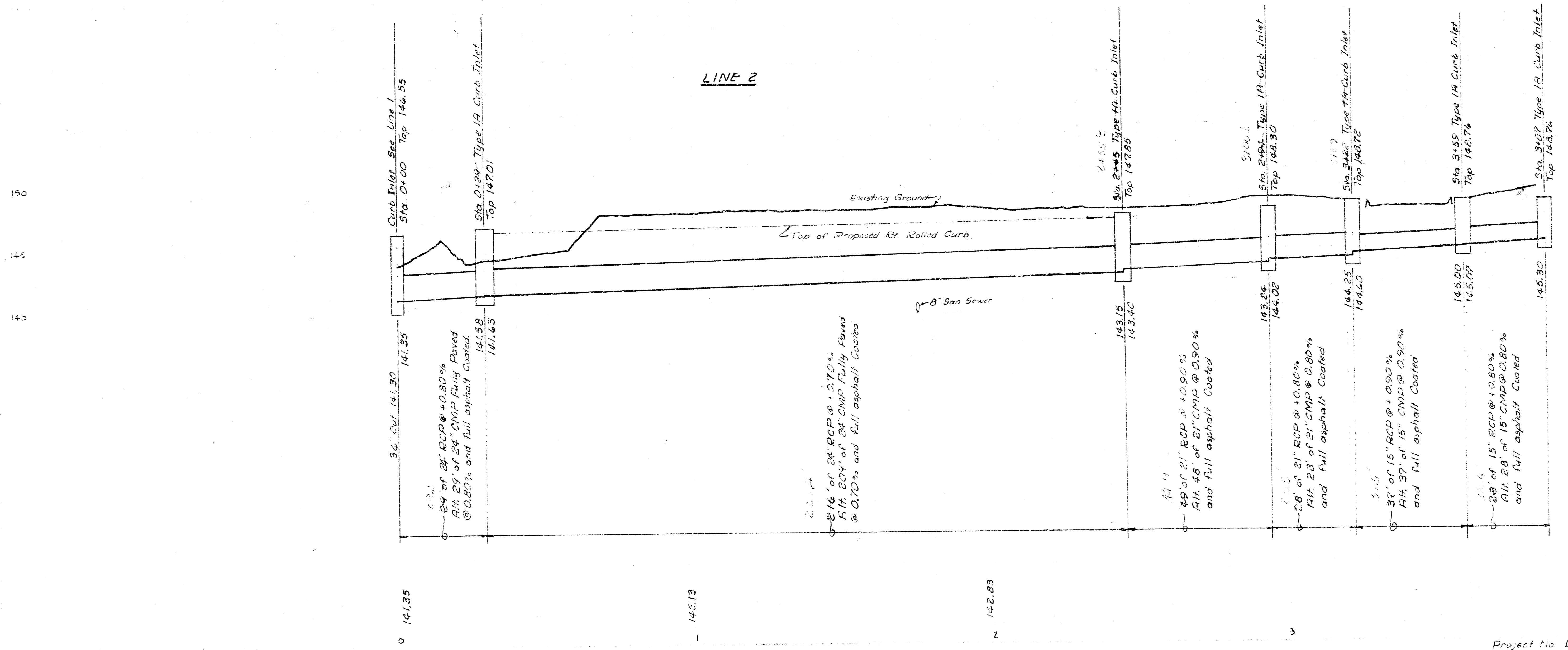
Install 33' of 15" Pipe with
end section @ USFL 142.8;
DSFL 154.0



D.L.A. Burns

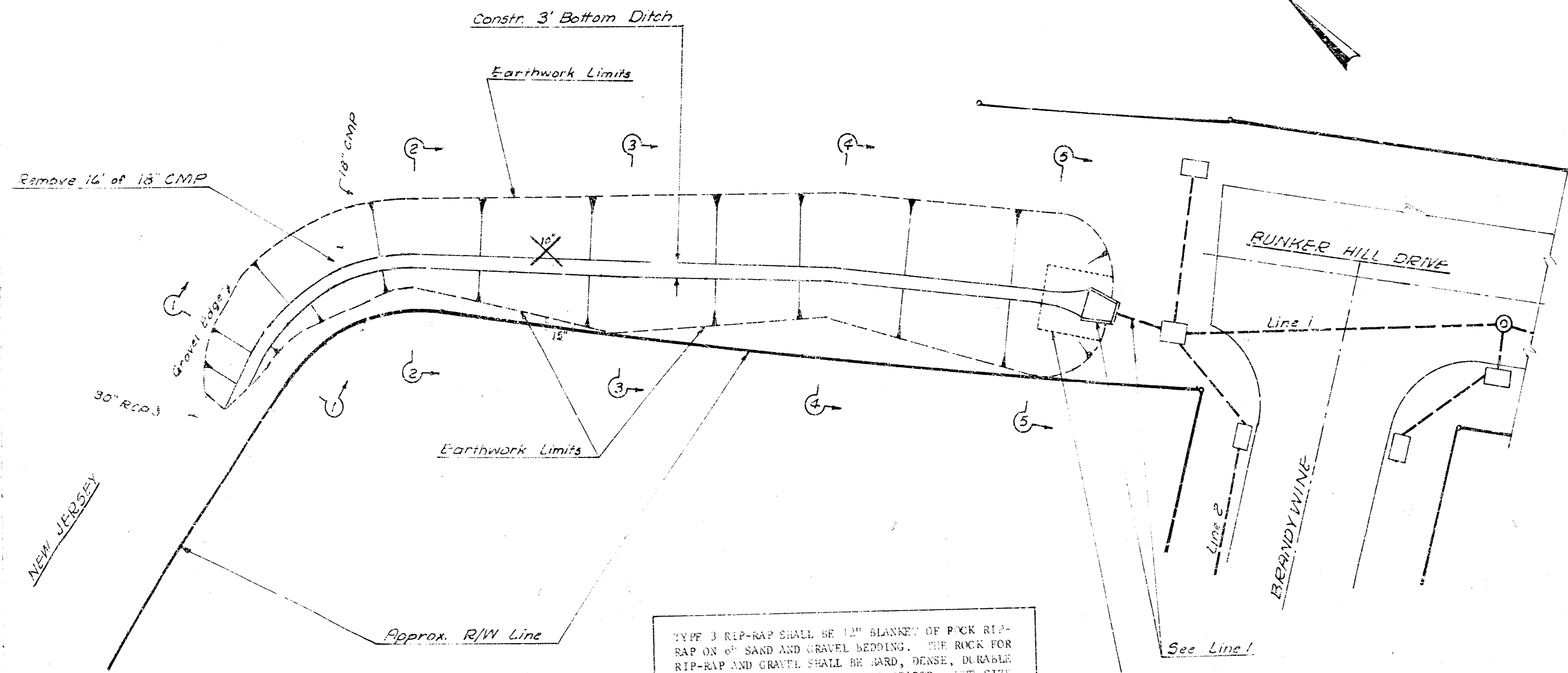
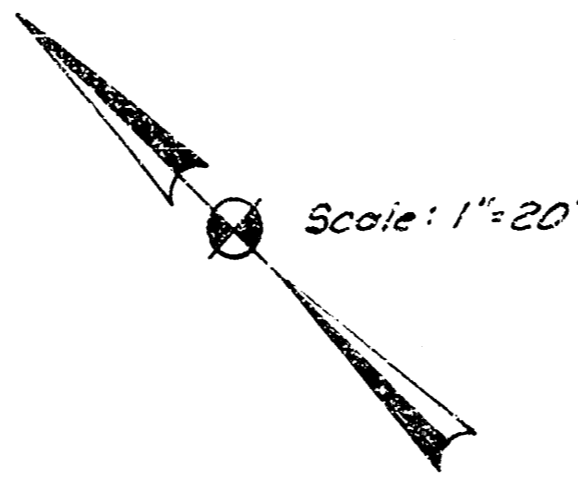


D.L.A. Burns



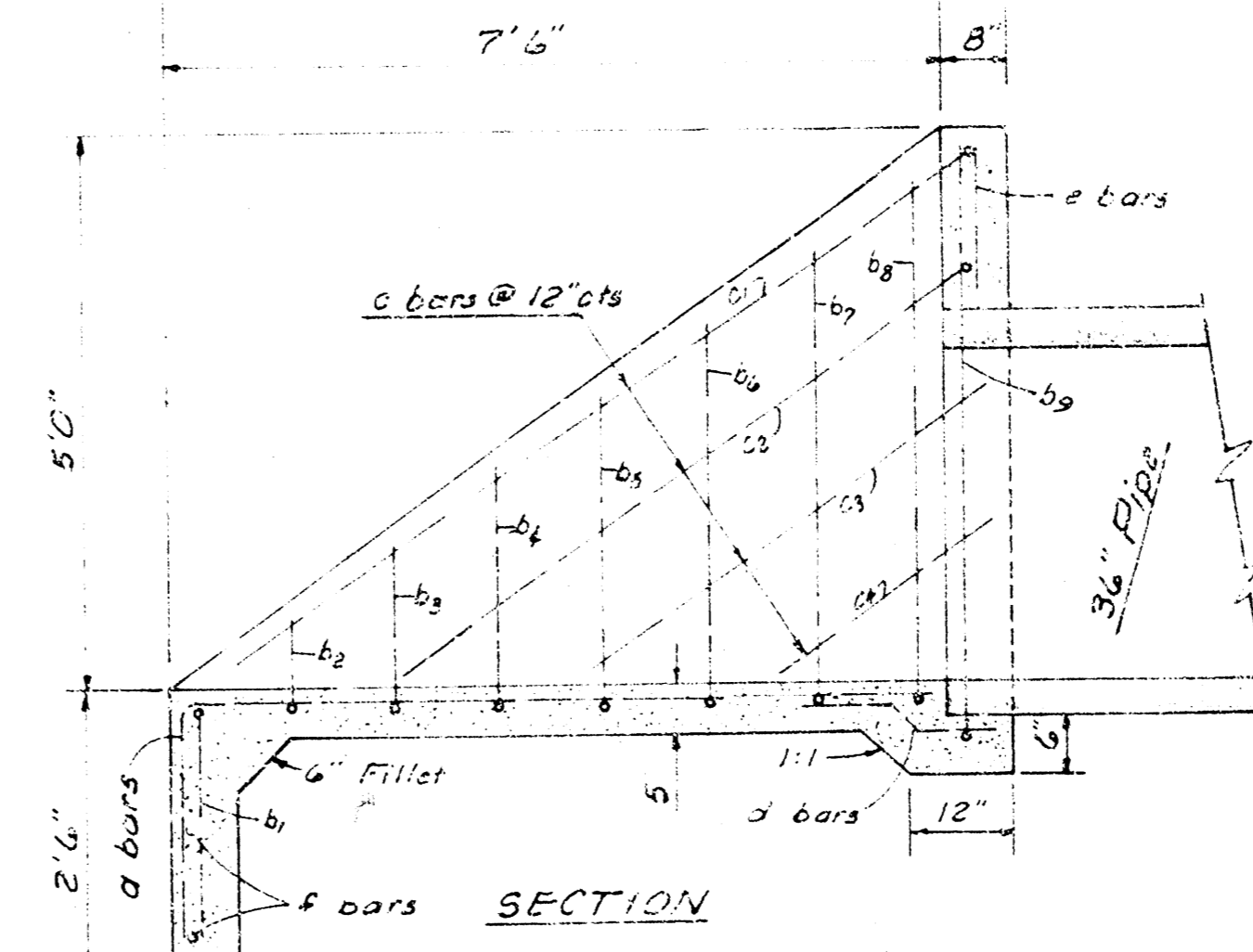
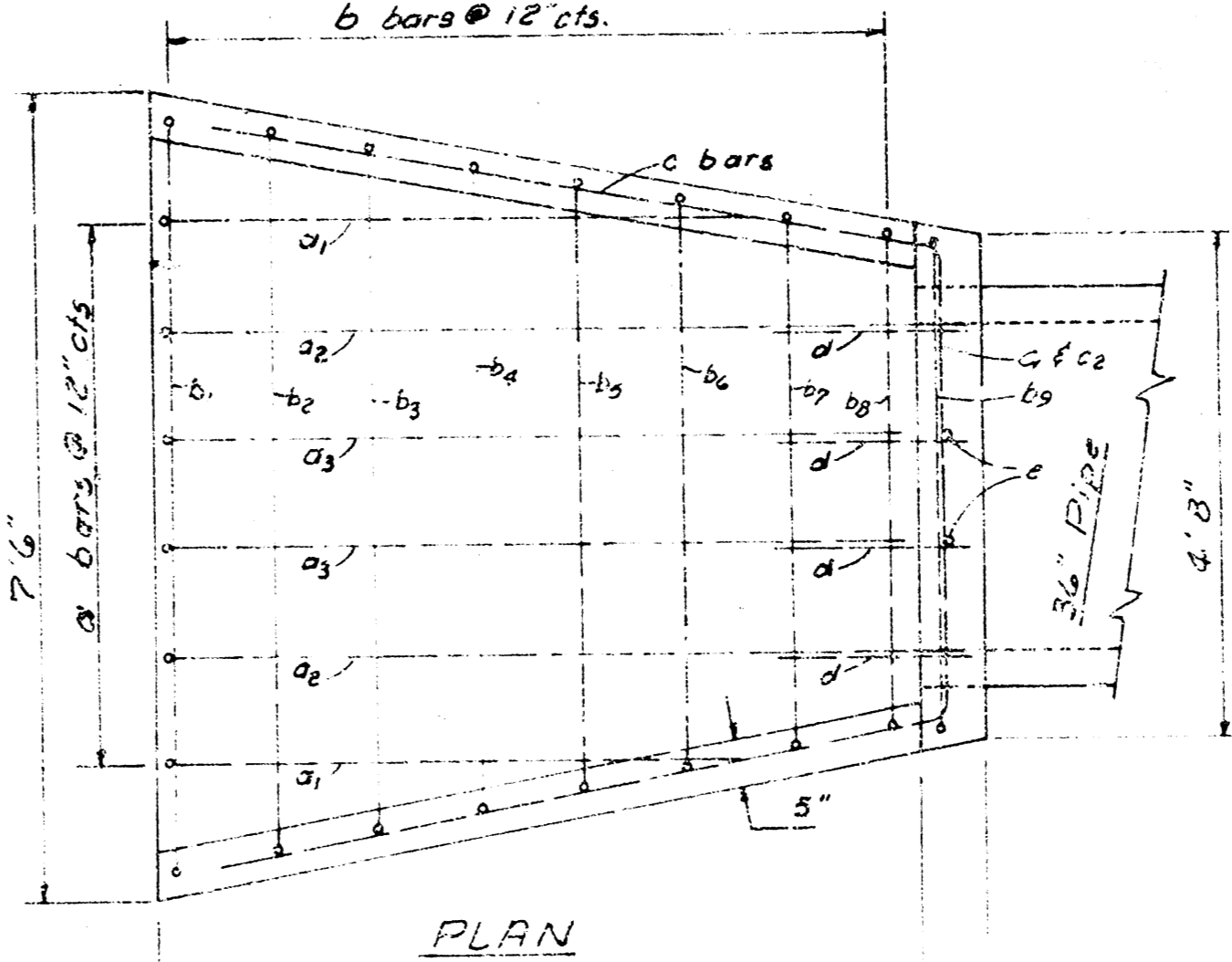
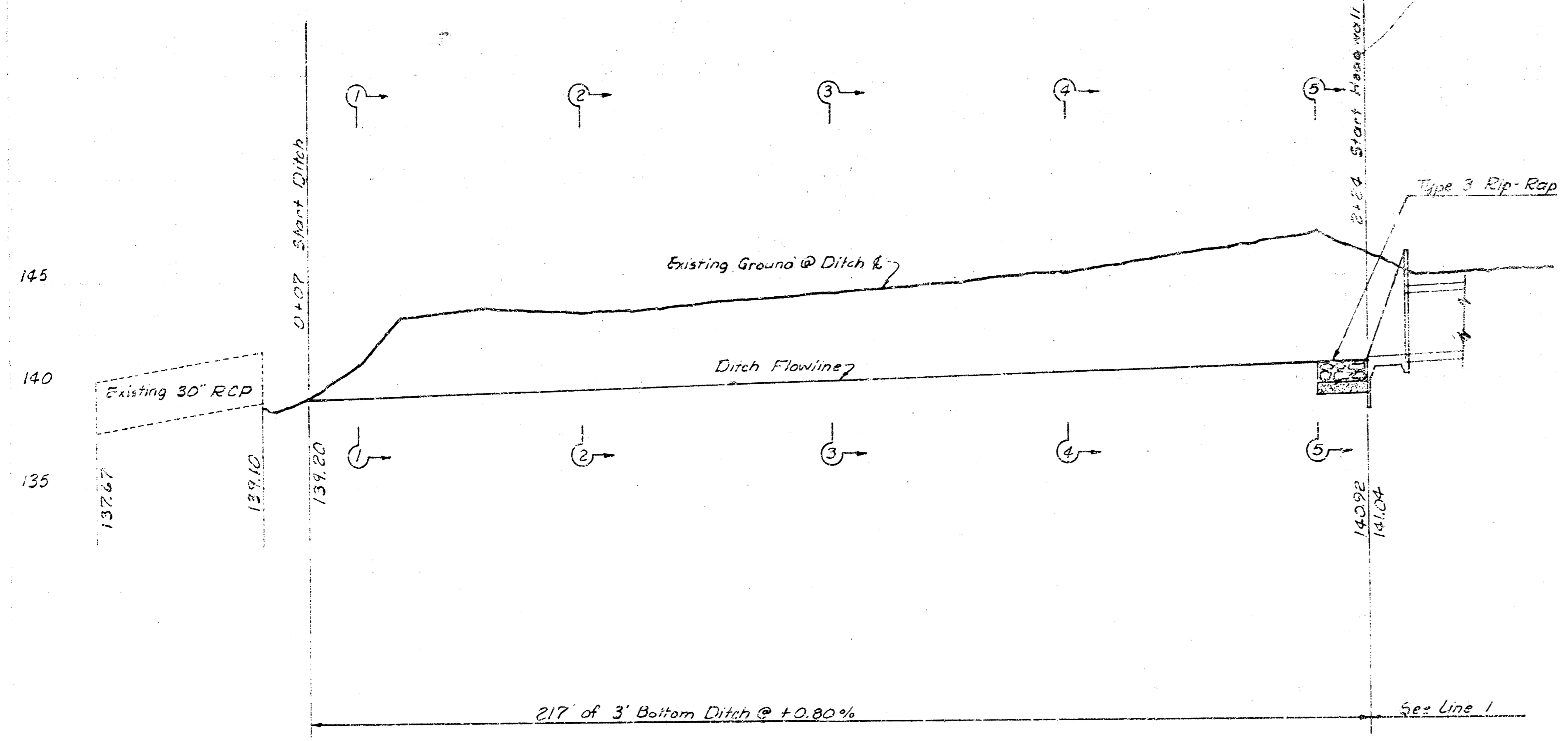
BM 144.30 R.R. Spk. 3a. Face RR 70' West of W.L.
Bunker Hill Dr. E. 3d. Na. of E. 31/2 St. So.

EARTHWORK ON THIS SHEET TO BE PAID FOR AS LUMP SUM BID FOR "OUTLET DITCH". USING DITCH SECTIONS AS SHOWN, THE DOUBLE END AREA EARTHWORK IS 528 C.Y.

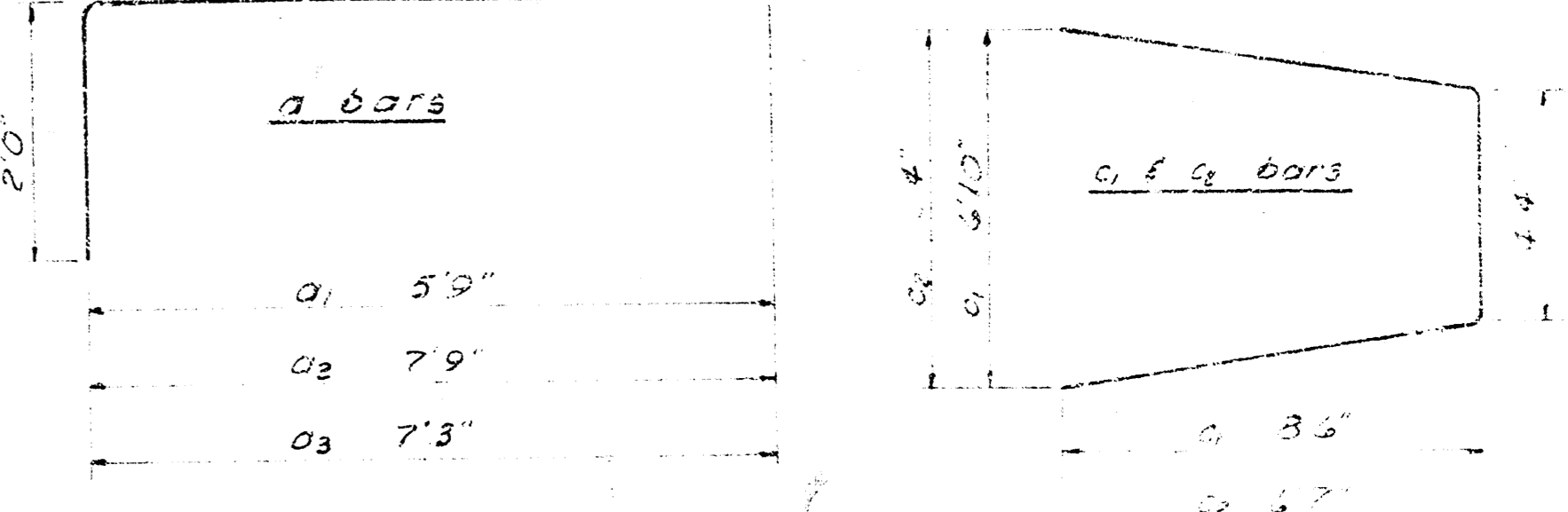
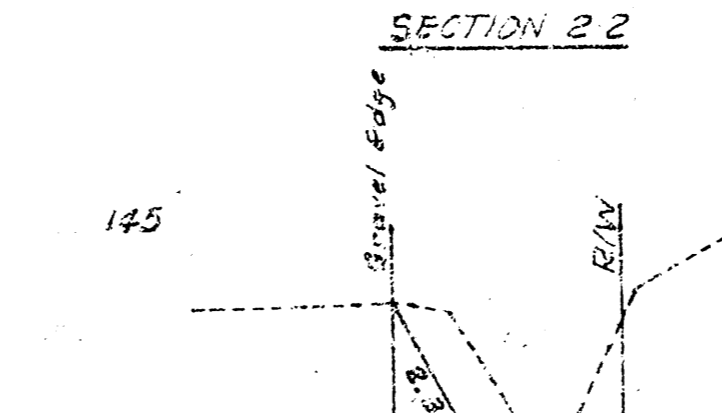
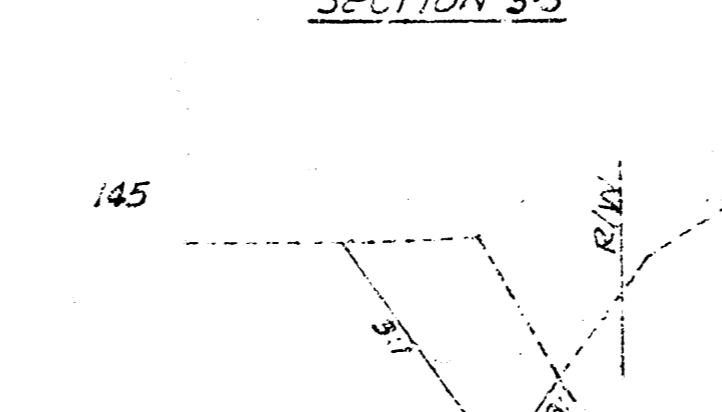
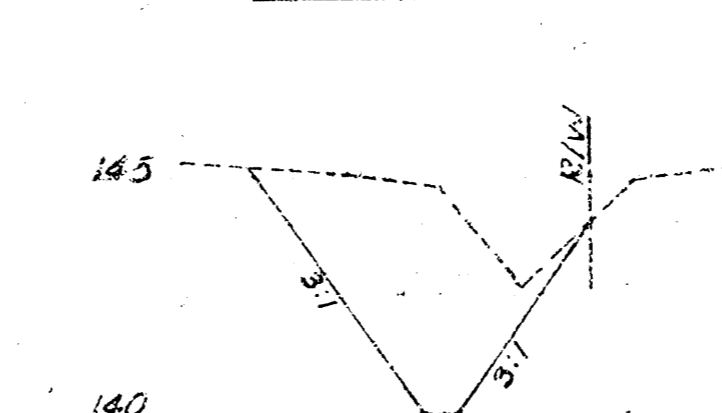
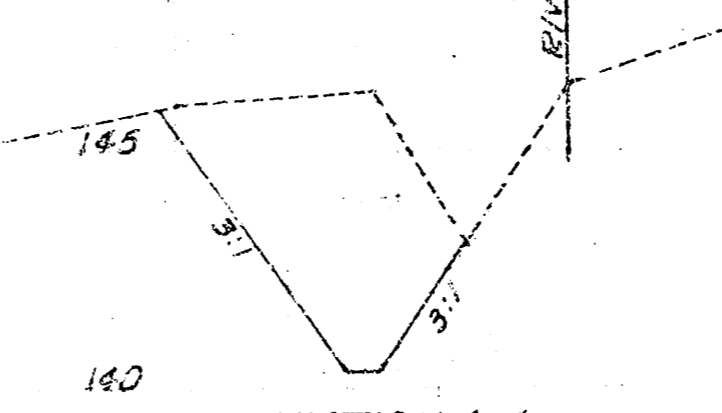
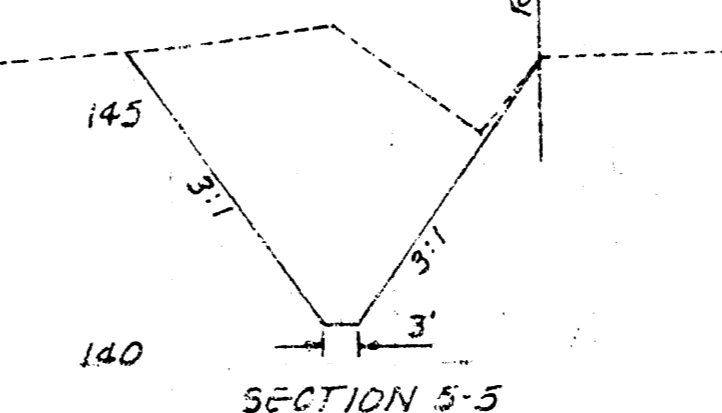


TYPE 3 RIP-RAP SHALL BE 12" BLANKET OF ROCK RIP-RAP OR 6" SAND AND GRAVEL BEDDING. THE ROCK FOR RIP-RAP AND GRAVEL SHALL BE HARD, DENSE, DURABLE AND SHOULD BE REASONABLY WELL GRADED. THE SIZE RANGE OF ROCK SHALL HAVE A MAXIMUM SIZE OF 1 CUBIC FOOT AND A MINIMUM SIZE OF 1 1/2 INCHES. THE 6" SAND AND GRAVEL BEDDING FOR RIP-RAP SHOULD BE A CONTINUOUS LAYER OF SAND AND GRAVEL OR SAND AND CRUSHED ROCK, REASONABLY WELL GRADED TO A MAXIMUM OF 1 1/2 INCHES IN SIZE.

Install 30" V.P. Type 3 Rip-Rap as directed by the Engineer.



HEADWALL Scale 1/2" = 10"



ITEM	QUANTITY	UNIT
Concrete	2.5	CY
Reinforcing Steel	157.21	Lbs

BILL OF MATERIAL

BAR SCHEDULE

BAR	SIZE	LENGTH	NO	SHAPE	WEIGHT
a1	#4	7'3"	2	U	11.35
a2	#4	9'9"	2	U	13.03
a3	#4	9'3"	2	U	12.36
b1	#4	10'0"	1	U	7.29
b2	#4	8'3"	1	U	5.51
b3	#4	9'4"	1	U	6.23
b4	#4	10'3"	1	U	6.03
b5	#4	11'3"	1	U	7.52
b6	#4	10'3"	1	U	6.9
b7	#4	13'5"	1	U	9.40
b8	#4	14'0"	1	U	9.35
b9	#4	15'0"	1	U	10.03
c1	#4	27'6"	1	W	14.36
c2	#4	17'3"	1	W	11.80
c3	#4	8'6"	2	U	6.01
c4	#4	2'5"	2	U	3.34
d	#4	2'0"	2	U	5.34
e	#4	1'4"	2	U	1.28
f	#4	7'0"	2	U	4.35