

STORM WATER SEWER NO. 132

GENERAL NOTES

1. FIELD ENGINEER SHALL TAKE CARE TO ALL IRONS AND DIMBLES WHICH MAY BE DESTROYED. FIELD ENGINEER SHALL REPLACE ALL IRONS AND DIMBLES WHICH ARE DESTROYED.
2. ALL CONCRETE UNLESS OTHERWISE NOTED SHALL BE "6-SACK CONCRETE".
3. ALL METAL PIPES SHALL BE FULL ASPHALT COATED HELICALLY CORRUGATED METAL PIPES FOR SIZES 24" IN DIAMETER (OR EQUIVALENT ARCH PIPE) OR SMALLER, AND FULL ASPHALT COATED FULLY PAVED CONCRETE METAL PIPE FOR SIZES 24" INCHES IN DIAMETER (OR EQUIVALENT ARCH PIPE) OR LARGER.
4. THE RIP-RAP ON THIS PROJECT SHALL BE TYPE 3. TYPE 3 RIP-RAP IS 1 1/2" RIP-RAP ON A 6" SAND AND GRAVEL BEDDING. THE ROCK FOR RIP-RAP AND GRAVEL SHALL BE HARD, DENSE, DURABLE AND REASONABLY WELL GRADED. THE SIZE RANGE OF ROCK USED SHALL HAVE A MAXIMUM SIZE OF ONE CUBIC FOOT AND A MINIMUM SIZE OF 1 1/2 INCH. THE 6" SAND AND GRAVEL BEDDING FOR RIP-RAP SHALL BE A CONTINUOUS LAYER OF SAND AND GRAVEL OR SAND AND CRUSHED ROCK, REASONABLY WELL GRADED TO A MAXIMUM OF 1 1/2 INCHES IN SIZE.
5. ALL CURB INLETS TO BE TYPE 1-A.
6. CONTRACTOR TO COORDINATE WORK WITH PAVING AND SANITARY CONTRACTORS.
7. CONTRACTOR TO COORDINATE THEIR WORK EFFORTS WITH UTILITY COMPANIES, AND OTHER AGENCIES RELATED WITH THE PROJECT SITE DEVELOPMENT.
8. SEE PAVING PLAN FOR STREET LAYOUT.
9. LOCATION OF CURB INLETS TO BE DETERMINED FROM BACK-OF-CURB LOCATION SHOWN ON STREET PAVING PLAN.
10. ALL METAL PIPES SHALL BE HELICALLY CORRUGATED FULLY COATED BOTH INSIDE AND OUTSIDE. THE COATING MAY BE BITUMINOUS OR POLYMERIC AS SPECIFIED IN AASHTO DESIGNATION M246-78, TYPE B. ALL SUCH COATED CORRUGATED PIPE SHALL BE SMOOTH FLOW PIPE FOR SIZES 24" OR LARGER. ALL CONNECTIONS SHALL BE FAIRLY WATER TIGHT CONSTRUCTED USING HUGGER TYPE COUPLER OR EQUAL.

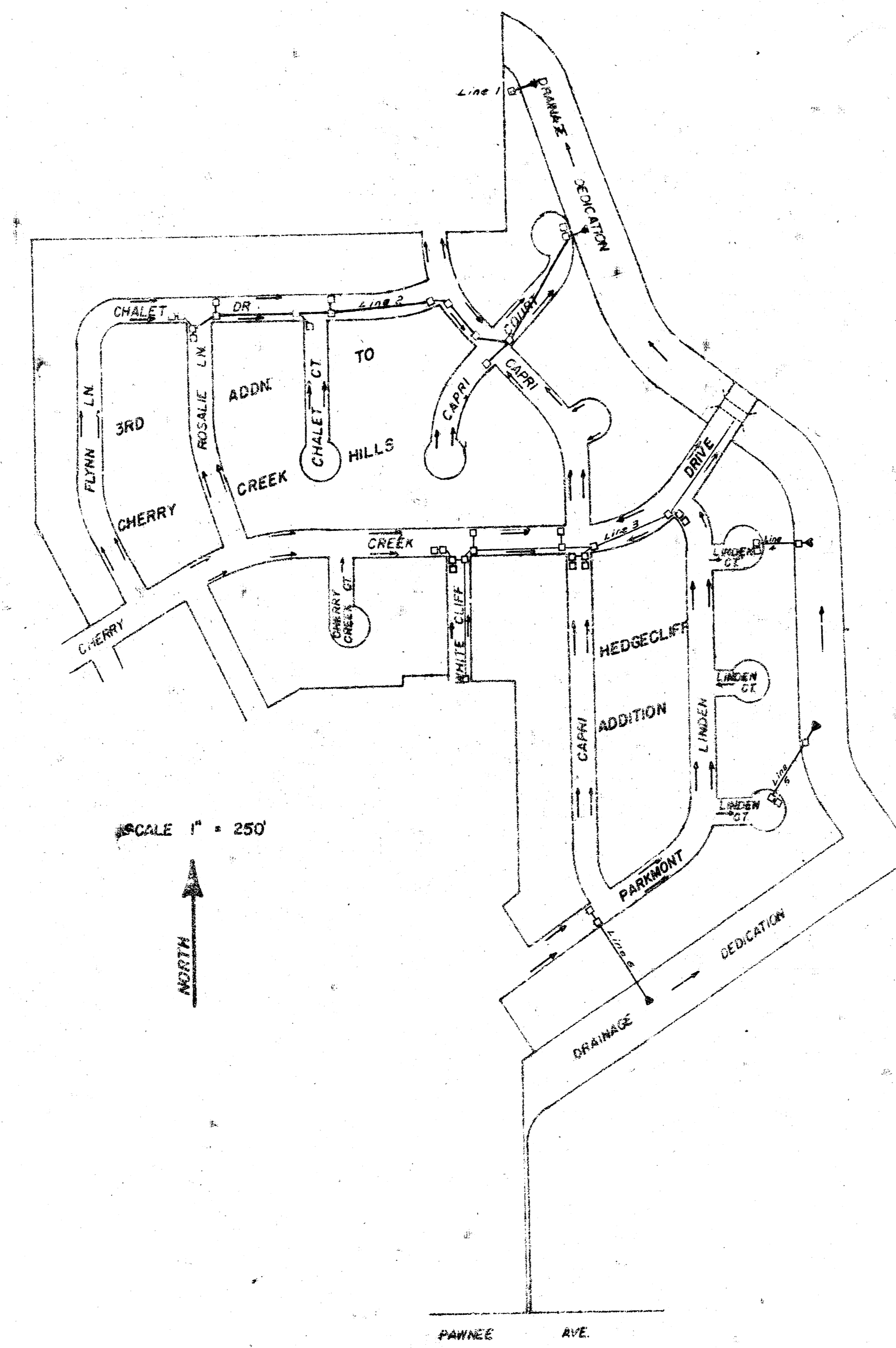


TABLE OF CONTENTS

COVER SHEET	P 1
LINE 1	P 2
LINE 2	Pp 3-5
LINE 3	Pp 6-8
LINES 4 & 5	P 9
LINE 6	P 10
DETAILS	P 11-14

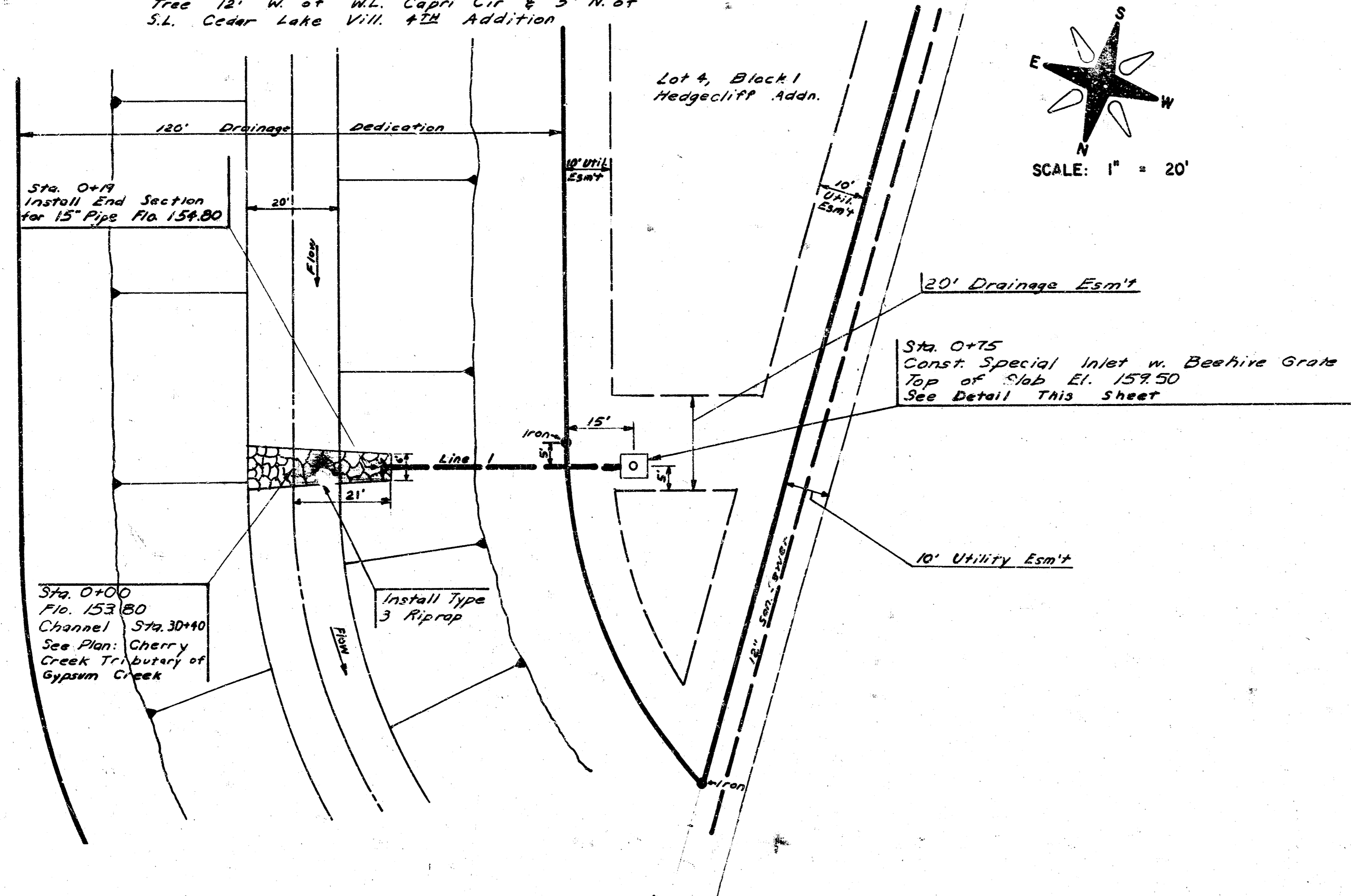
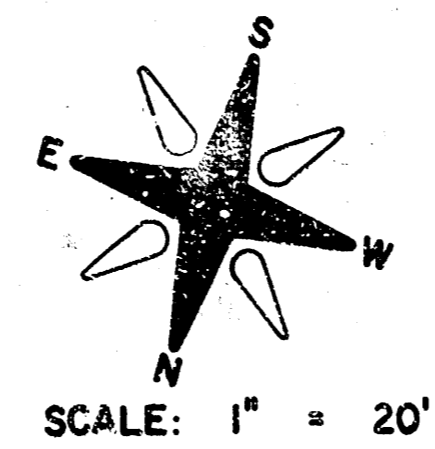
CITY OF WICHITA, KANSAS

R. W. LINN, CITY ENGINEER

PROJECT NO. 468-76-245-80646-000-000-001

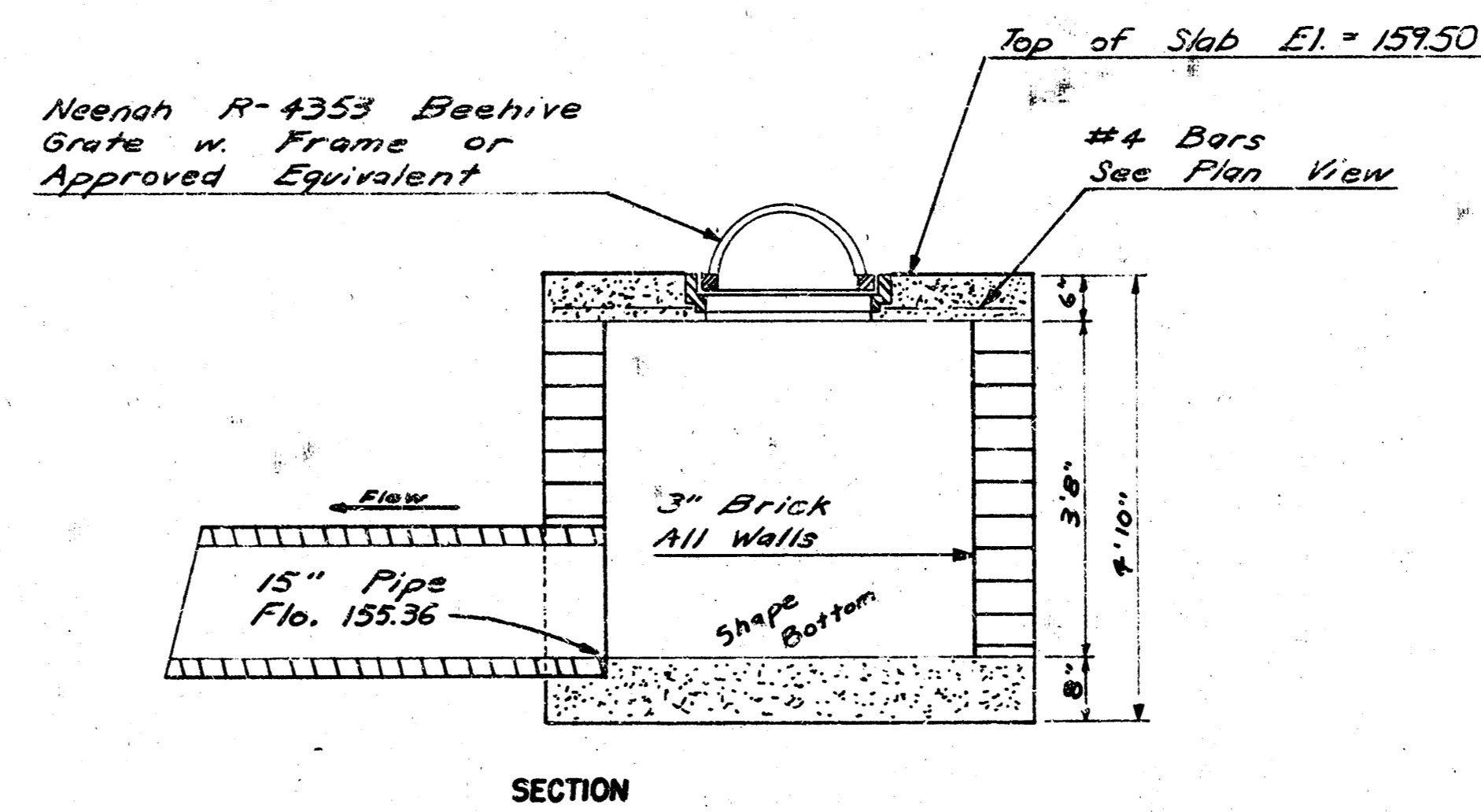
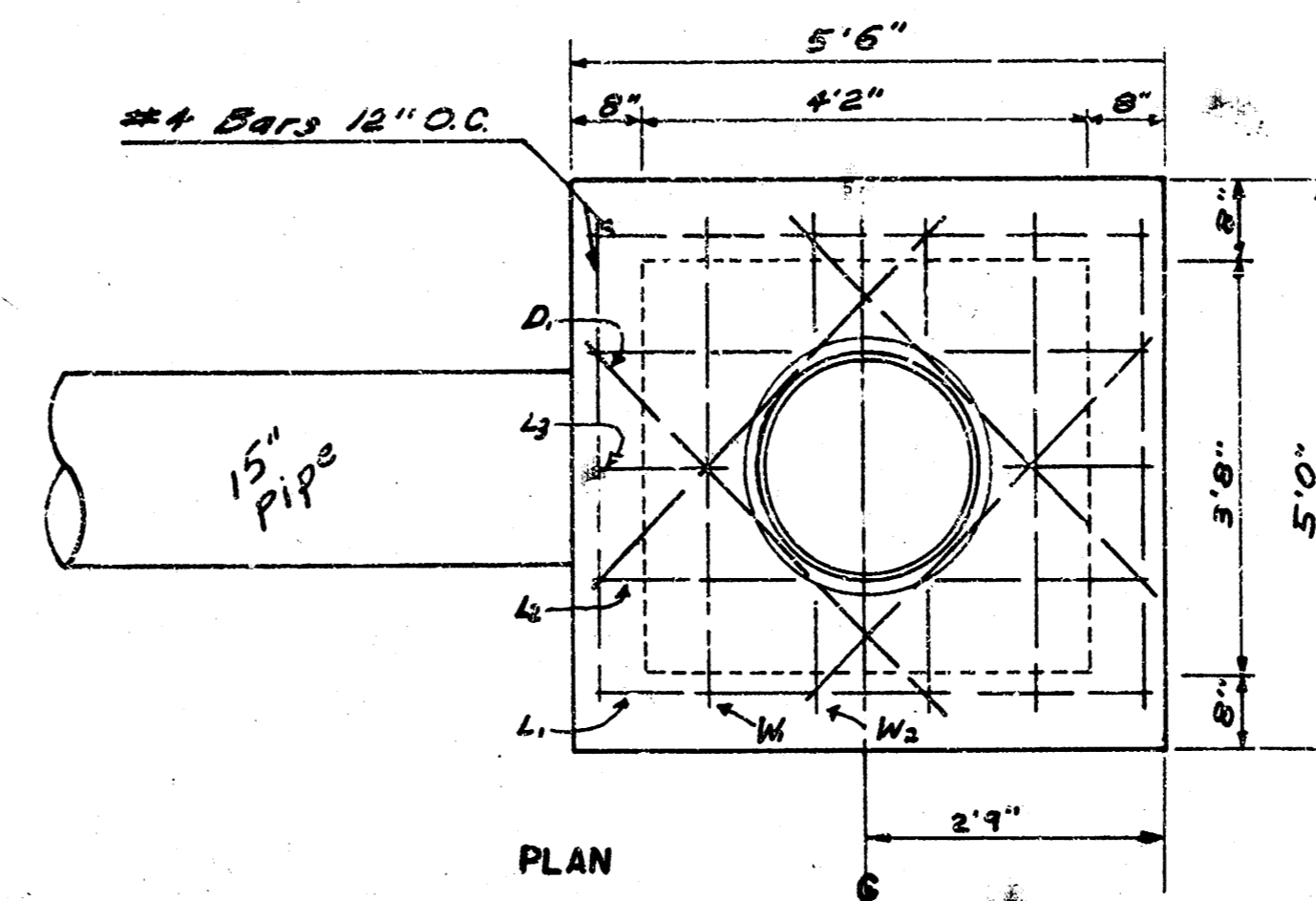
DATE: _____

B.M. El. 178.46 Top W. Cd. Rosalia 58' S of
 S.L. Cherry Creek Drive
 B.M. El. 169.60 RR Spk. NE Side Small Box Elder
 Tree 12' W. of W.L. Capri Cir. & 5' N. of
 S.L. Cedar Lake Vill. 4th Addition



SPECIAL INLET DETAIL

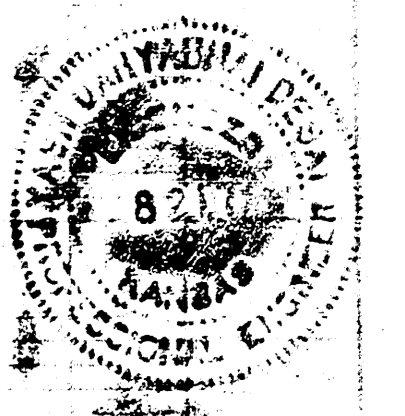
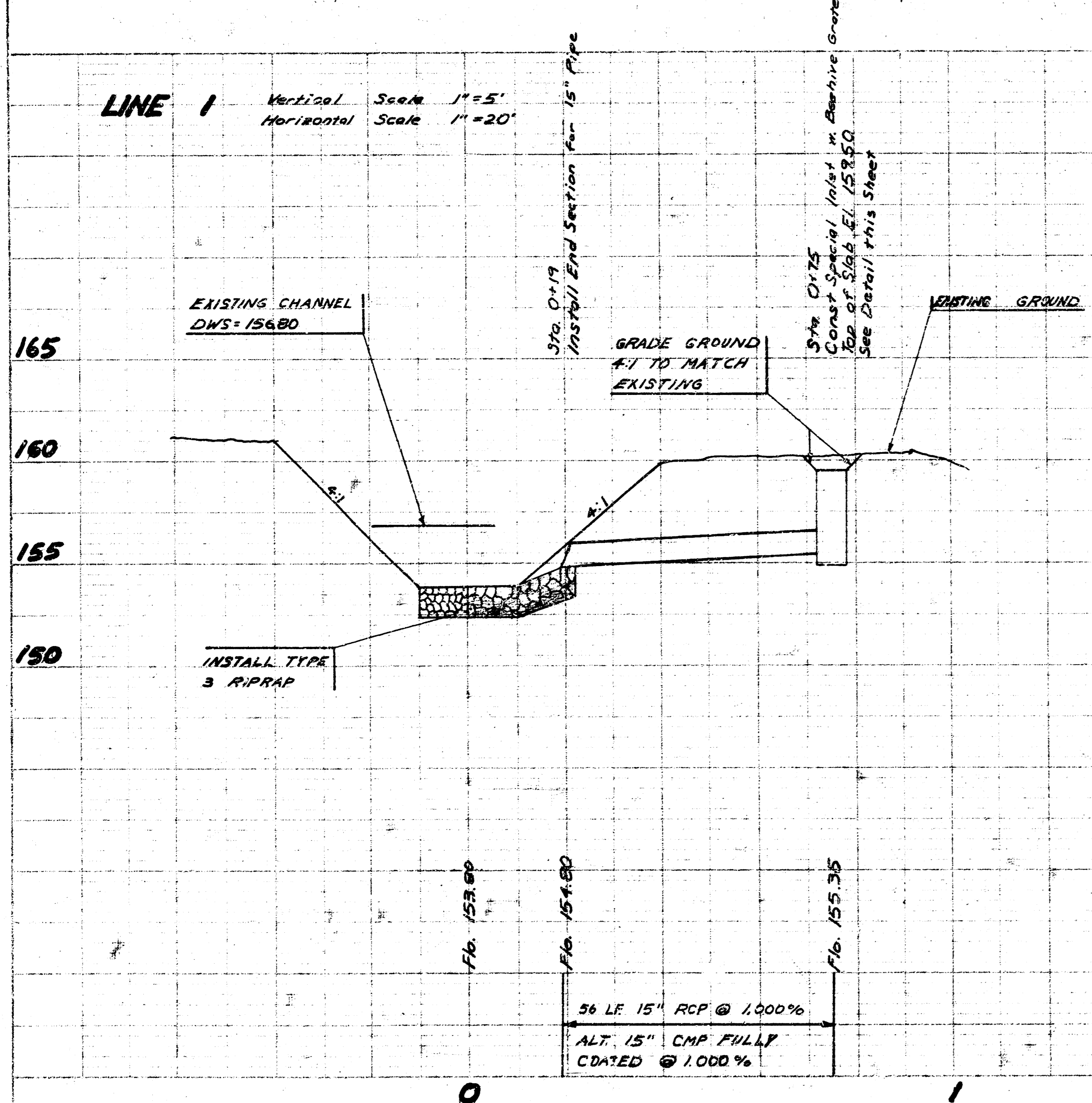
SCALE 1/2" = 1'



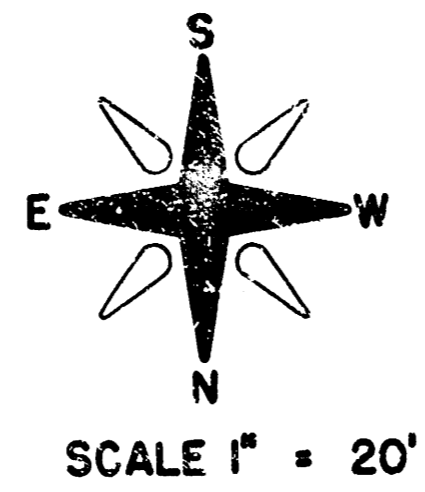
Bar	Quan.	Size	Length	Weight
W ₁	4	#4	4'4"	11.6 lbs.
W ₂	4	#4	1'2"	3.1 lbs.
L ₁	2	#4	5'2"	6.9 lbs.
L ₂	4	#4	2'0"	5.4 lbs.
L ₃	2	#4	1'6"	2.0 lbs.
D ₁	4	#4	7'5"	12.0 lbs.
Total Rebar				41.0 lbs.
C.Y. Concrete				1.2 CY
Sq. Ft. 8" Brick Wall				67.2 SF

TABLE OF QUANTITIES

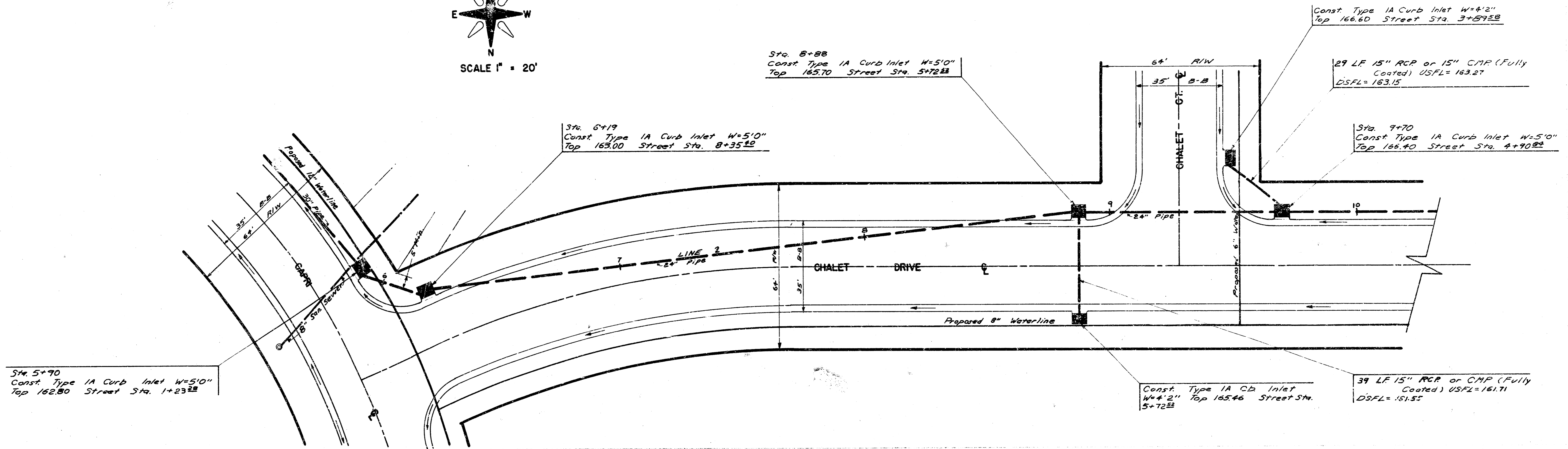
LINE 1
 Vertical Scale 1" = 5'
 Horizontal Scale 1" = 20'



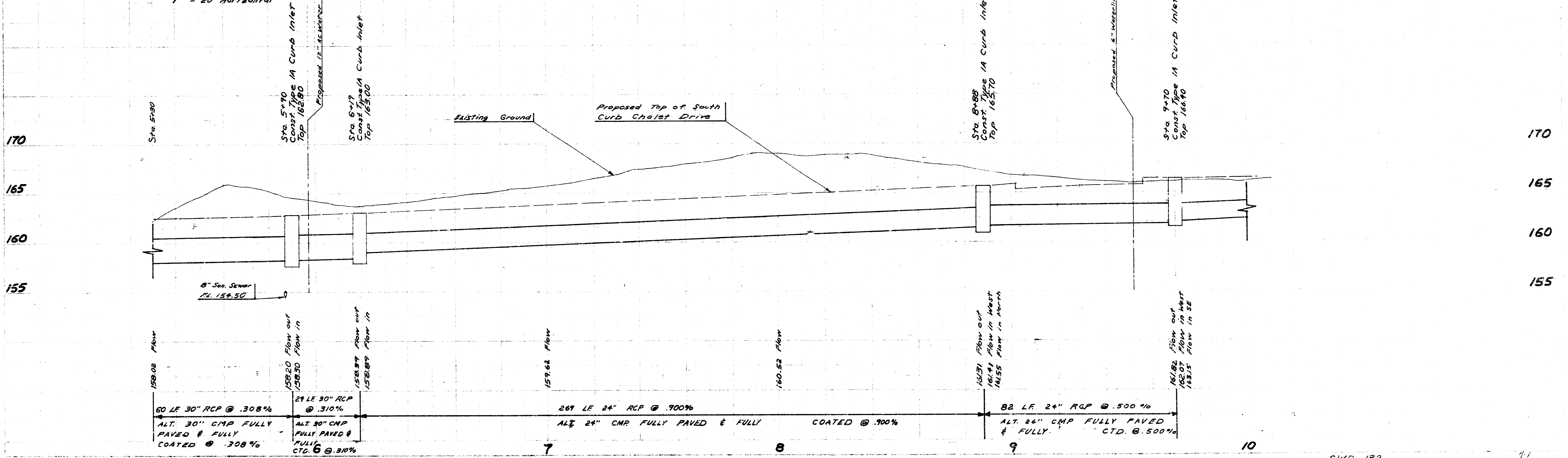
BY EL 16460 R/R Spk. NE side small Box Elder Tree 12' W of W.L.
Capri Cir & 5' N. of S.L. Cedar Lake Village #22



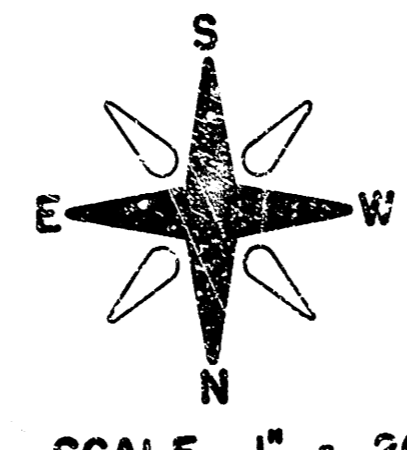
PLAN: 6/79
Pulte, Harrington
DC-149



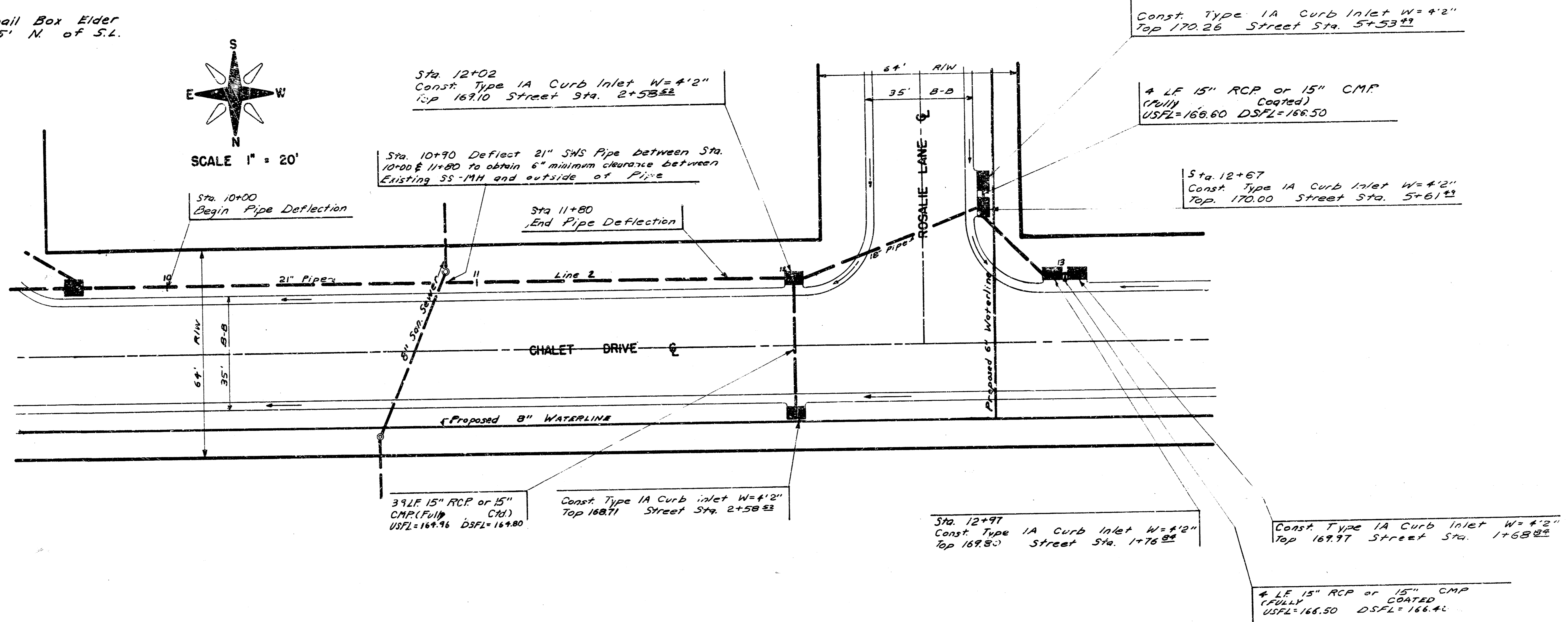
LINE 2
PROFILE SCALE: 1" = 5' Vertical
1" = 20' Horizontal



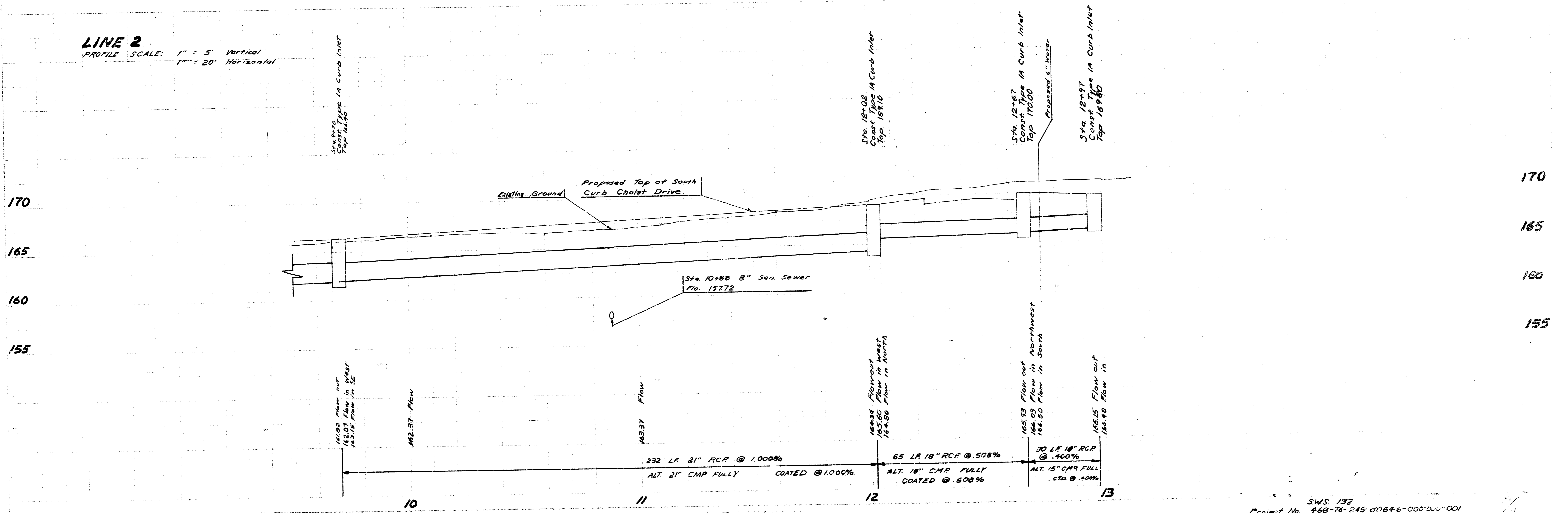
B.M. El. 184.60 RR. Spk. NE-side Small Box Elder
 Tree 12' W. of W.L. Copri Circle & 5' N. of S.L.
 Cedar Lake Village 433



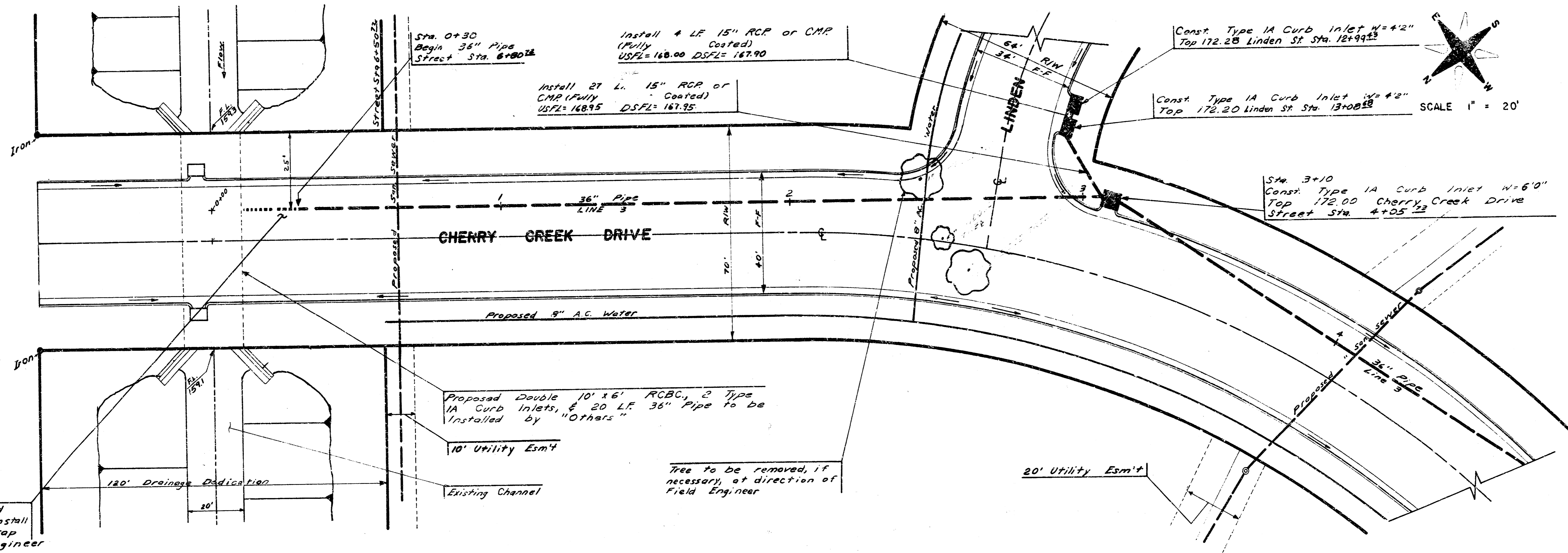
SCALE 1" = 20'



LINE 2
 PROFILE SCALE: 1" = 5' Vertical
 1" = 20' Horizontal



BM. 17B.46 Top W.C.D.
Rosalie 5'5" S. of S.L.
Cherry Creek Drive



DICKER HARRINGTON 7177

04-0-180

If RCBC not constructed before Storm Sewer, install temporary Type 3 Riprap at direction of Field Engineer

Proposed Double 10' x 6' RCBC, 2 Type IA Curb Inlets, & 20 LF 36" Pipe to be installed by "Others"

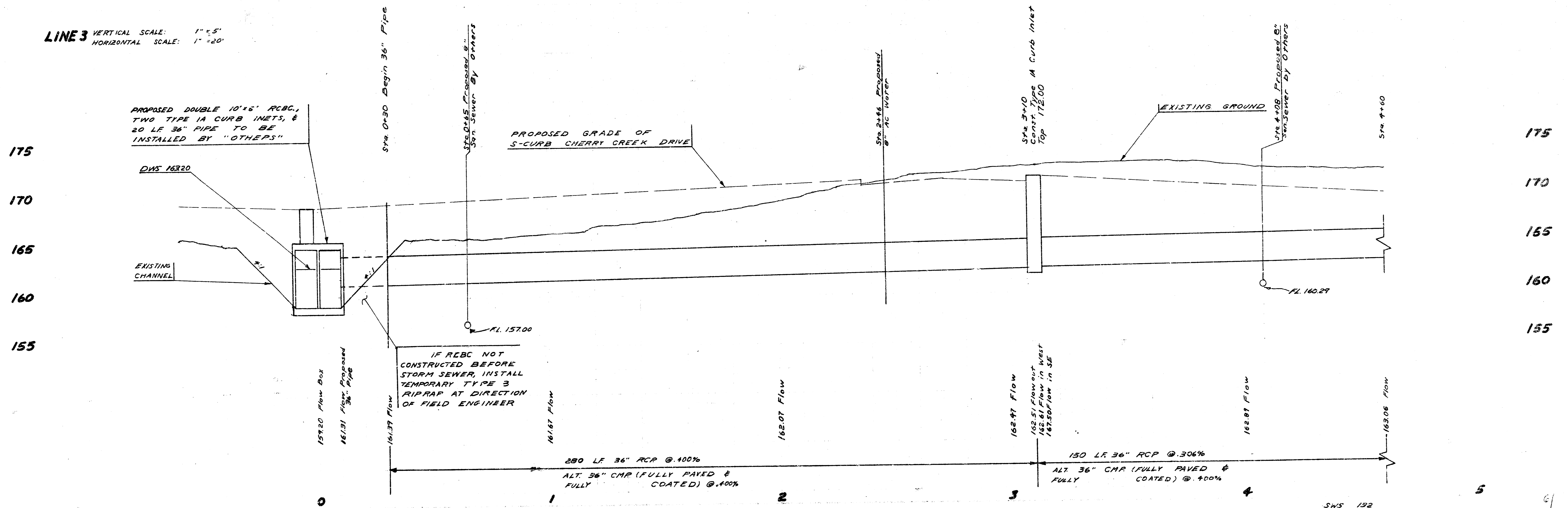
10' Utility Esm't

Existing Channel

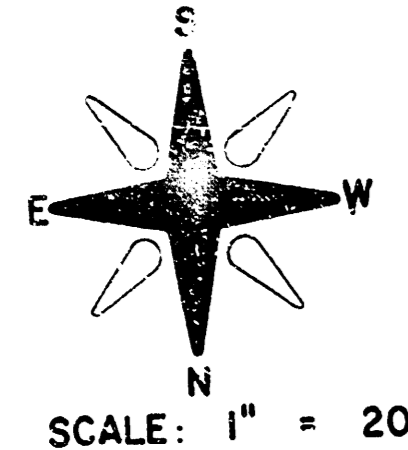
Tree to be removed, if necessary, at direction of Field Engineer

20' Utility Esm't

LINE 3 VERTICAL SCALE: 1" = 5'
HORIZONTAL SCALE: 1" = 20'



B.M. 178.46 Top W/Curb
 Relative SE' S. of S.L.
 Cherry Creek Drive



SCALE: 1" = 20'

Const. Type 1A Curb Inlet
 W=4'2" Top 169.19
 Capri Sta. @+2+85

Install 4 LF 5" RCP or
 CMP (Fully Coated)
 USFL=165.74 DSFL=165.64

Const. Type 1A Curb Inlet W=4'2"
 Top 169.19 Capri Sta. @+2+85

Install 4 LF 15" RCP or
 CMP (Fully Coated)
 USFL=165.74 DSFL=165.84

Const. Type 1A Curb Inlet
 W=5'0" Top 169.00
 Capri Sta. @+3+25

Const. Type 1A Curb Inlet W=4'2"
 Top 169.00 Capri Sta. @+3+62

Sta. 5+98
 Const. Type 1A Curb Inlet W=5'0"
 Top 169.00 Cherry Creek Dr. Sta. 1+31 1/2

Install 26 LF 21" RCP
 or CMP (Fully Paved &
 Fully Coated)
 USFL=163.14 DSFL=164.49

Stump to be removed, if
 necessary, at Field
 Engineer's direction

CHERRY CREEK DRIVE

Install 45 LF 15" RCP or
 CMP (Fully Coated)
 USFL=163.65 DSFL=165.47

Sta 5+18 Const. Type 1A Curb
 Inlet W=6'0" Top 169.00
 Cherry Creek Drive
 Sta. 2+08 1/2

Install 37 LF 18" RCP or
 CMP (Fully Coated)
 USFL=165.59 DSFL=165.39

Const. Type 1A Curb Inlet W=4'2"
 Top 169.00 Cherry Creek Drive Sta. 1+31 1/2

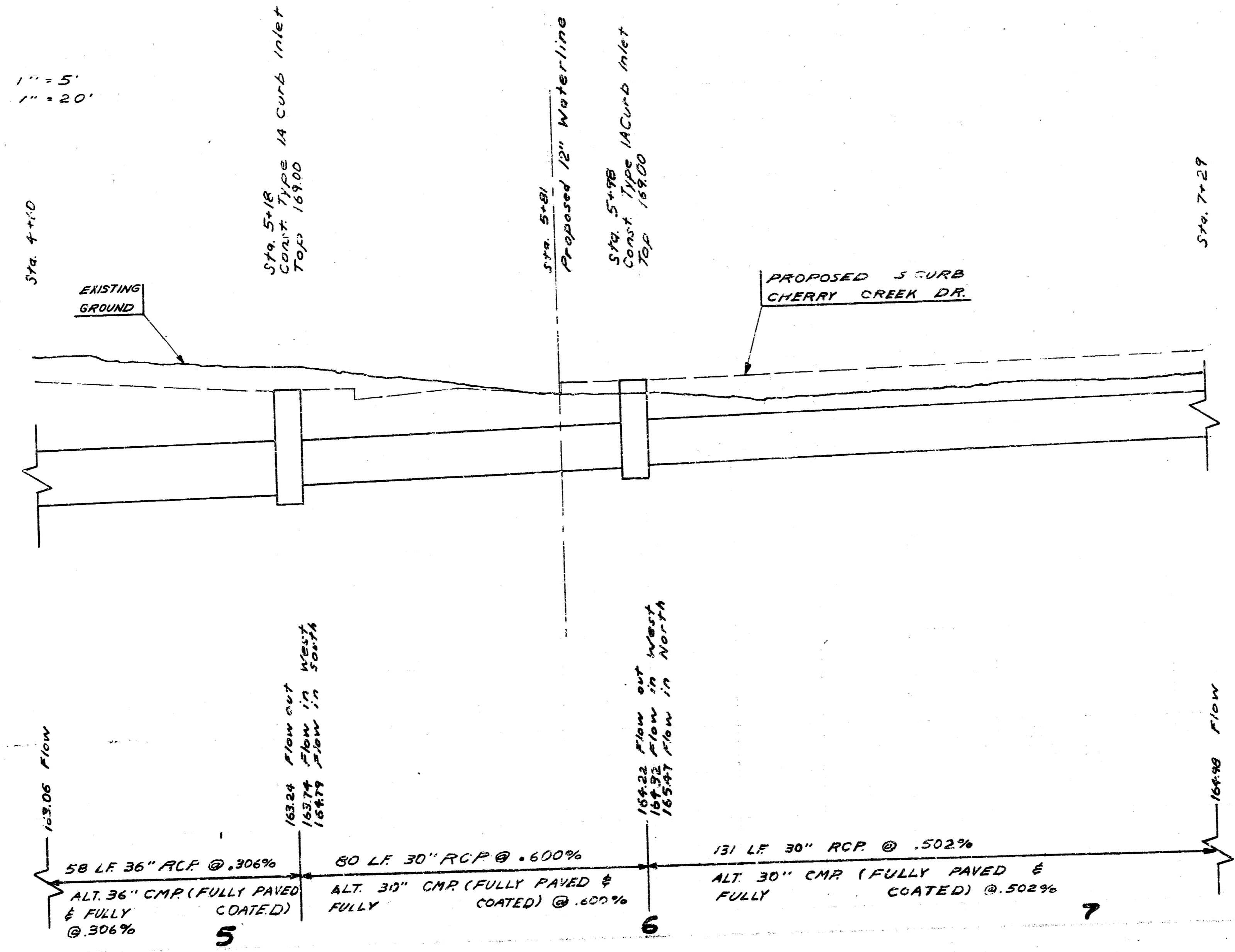
10' Utility Esm't

Remove Trees, if necessary, at
 Direction of Field Engineer

LINE 3

VERTICAL SCALE: 1" = 5'
 HORIZONTAL SCALE: 1" = 20'

170
165
160



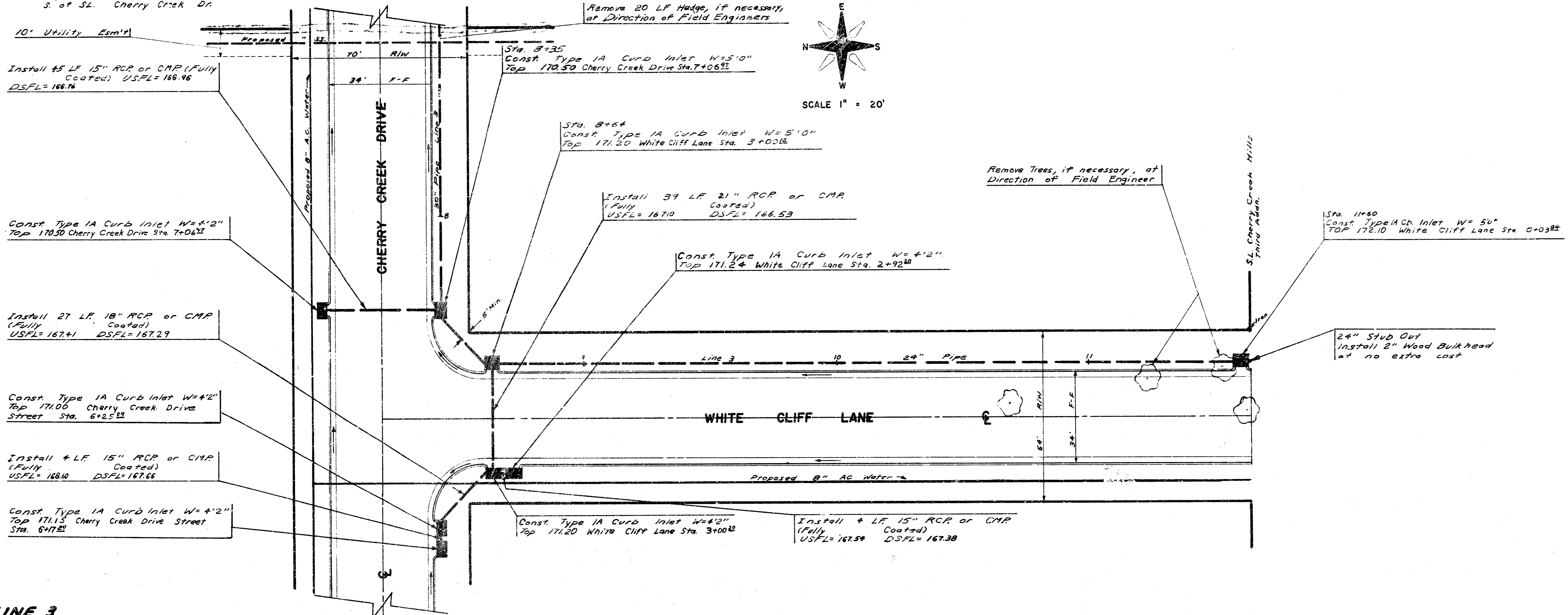
170
165
160

BM. 178.46 Top W-Cb Rosalie 55' S. of S.E. Cherry Creek Dr.

Remove 20 LF Hedge, if necessary, at Direction of Field Engineers

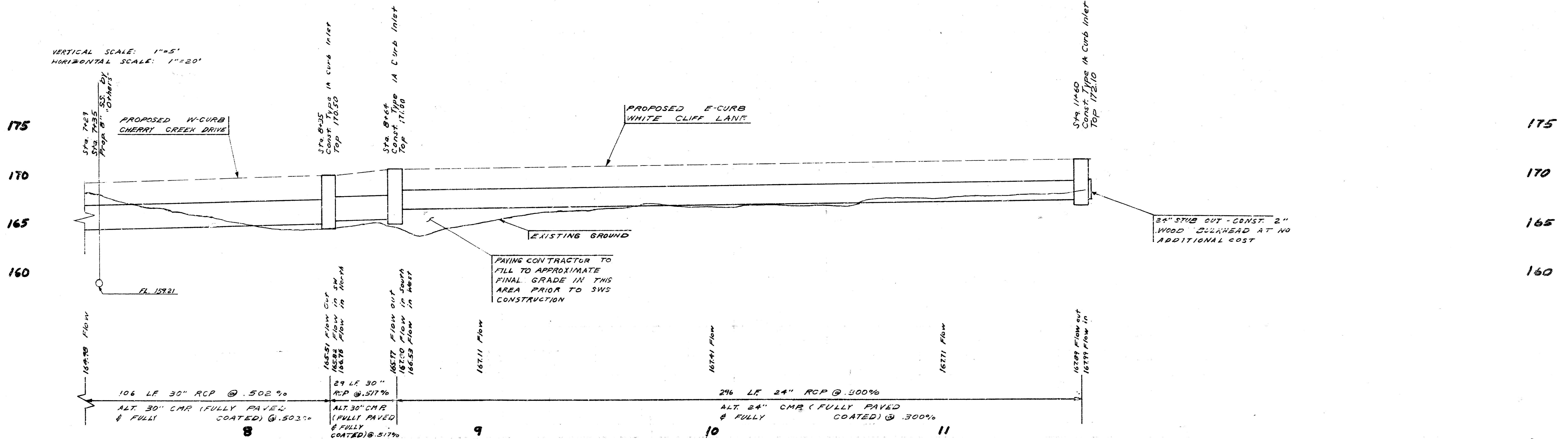


SCALE 1" = 20'

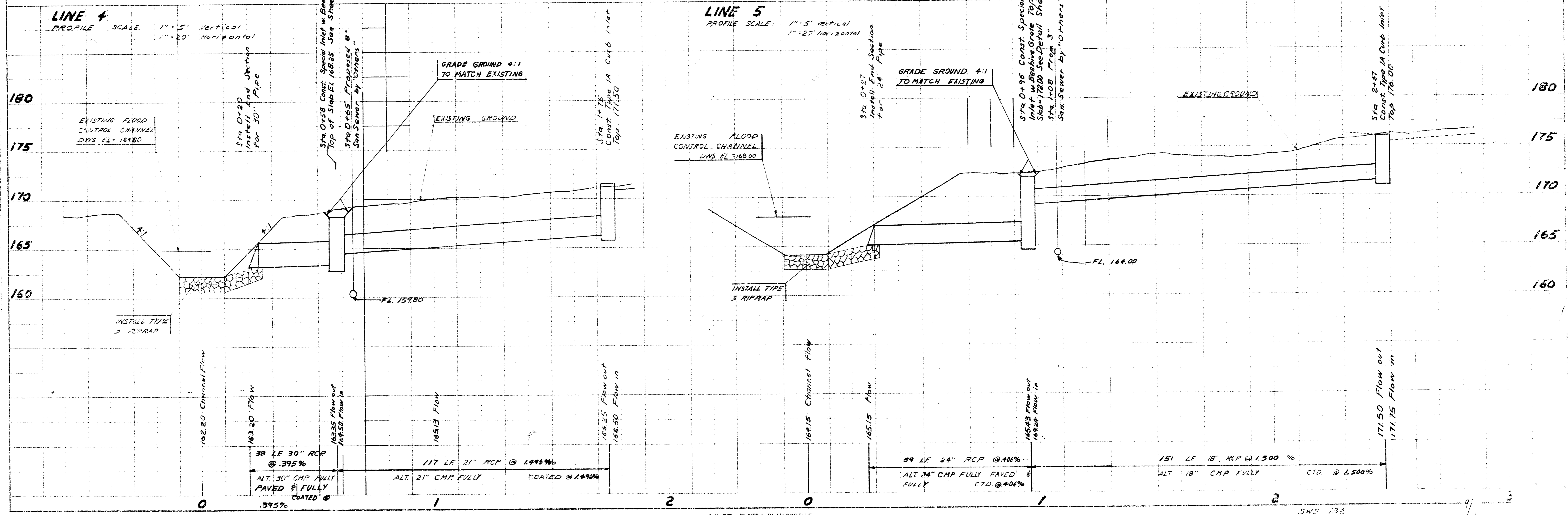
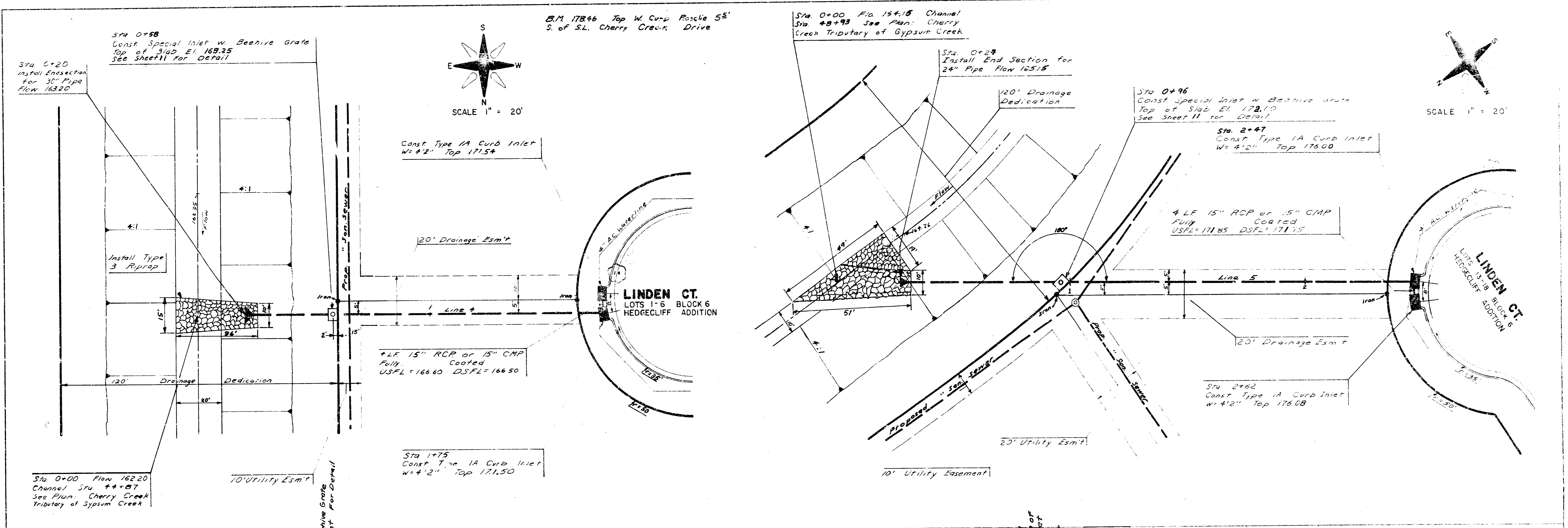


LINE 3

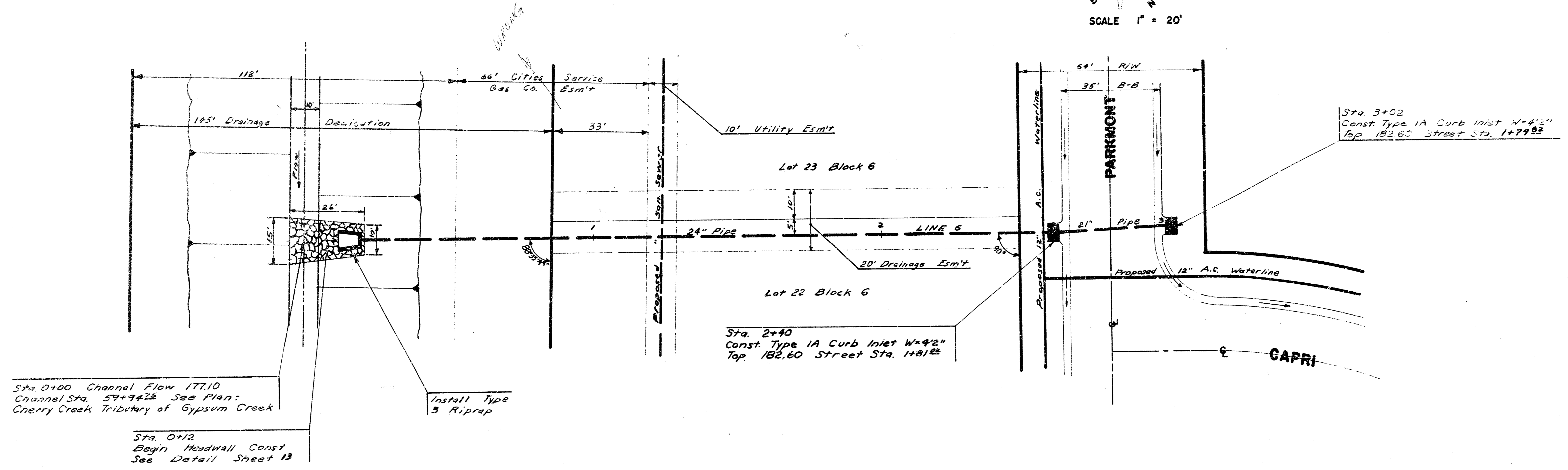
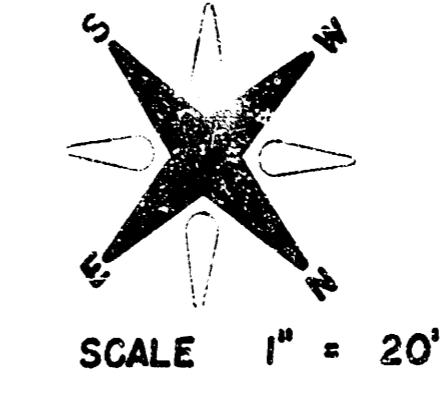
VERTICAL SCALE: 1"=5'
HORIZONTAL SCALE: 1"=20'



PLAN
 SHEET NO. 100
 PROJECT NO. 68-16-245-80646-000-001
 DATE: 11/11/11
 DRAWN BY: [Name]
 CHECKED BY: [Name]

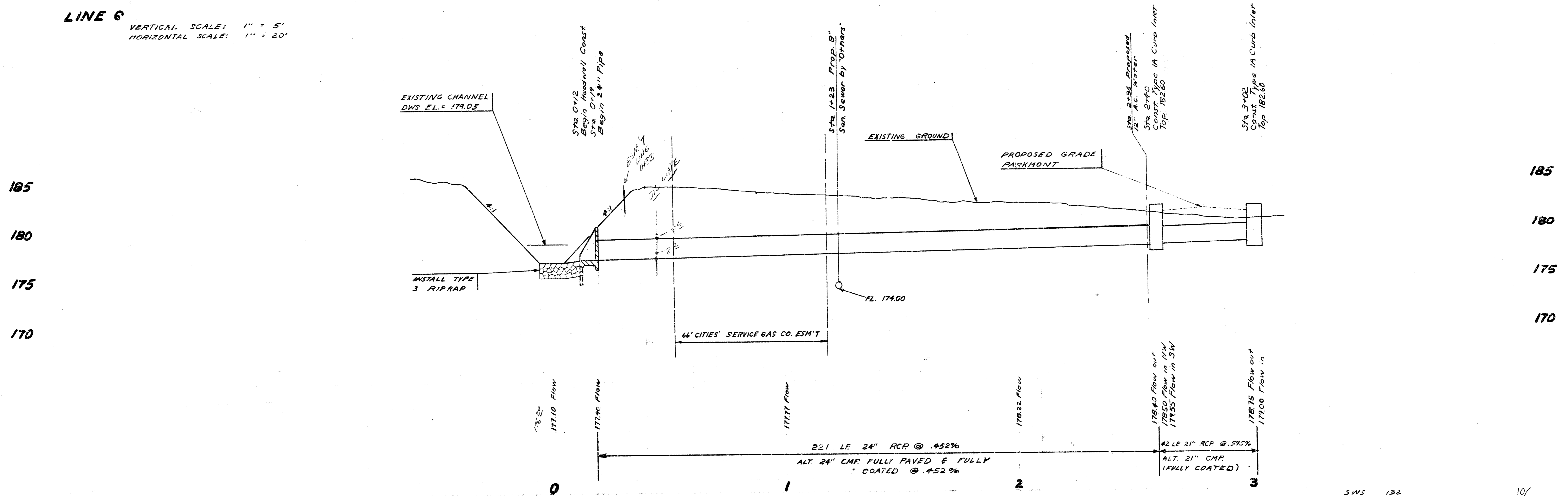


B.M. 17B+6 Top W. Co. Rosalie SE 1/4 S of S4.
Cherry Creek Drive



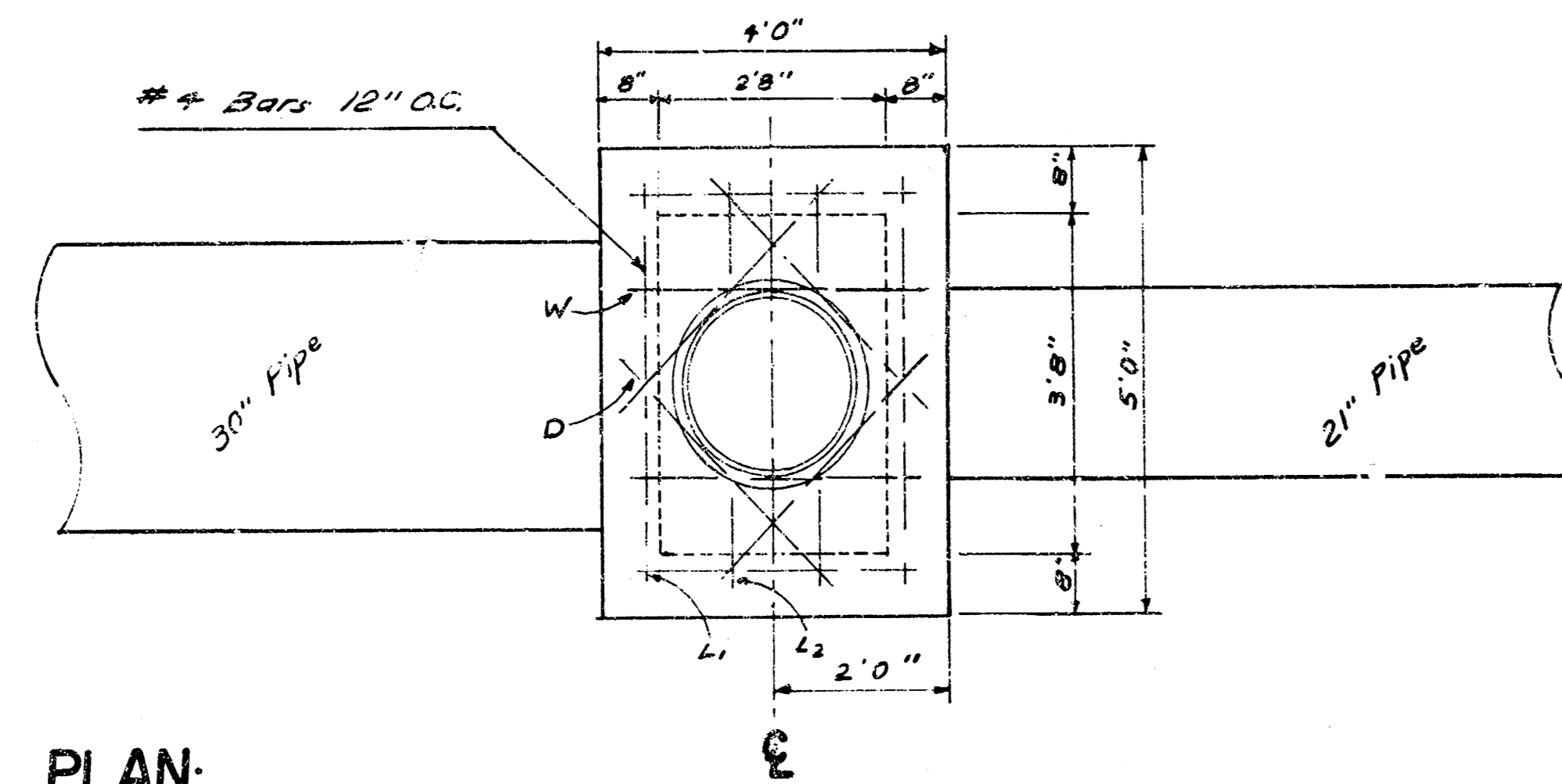
LINE 6

VERTICAL SCALE: 1" = 5'
HORIZONTAL SCALE: 1" = 20'

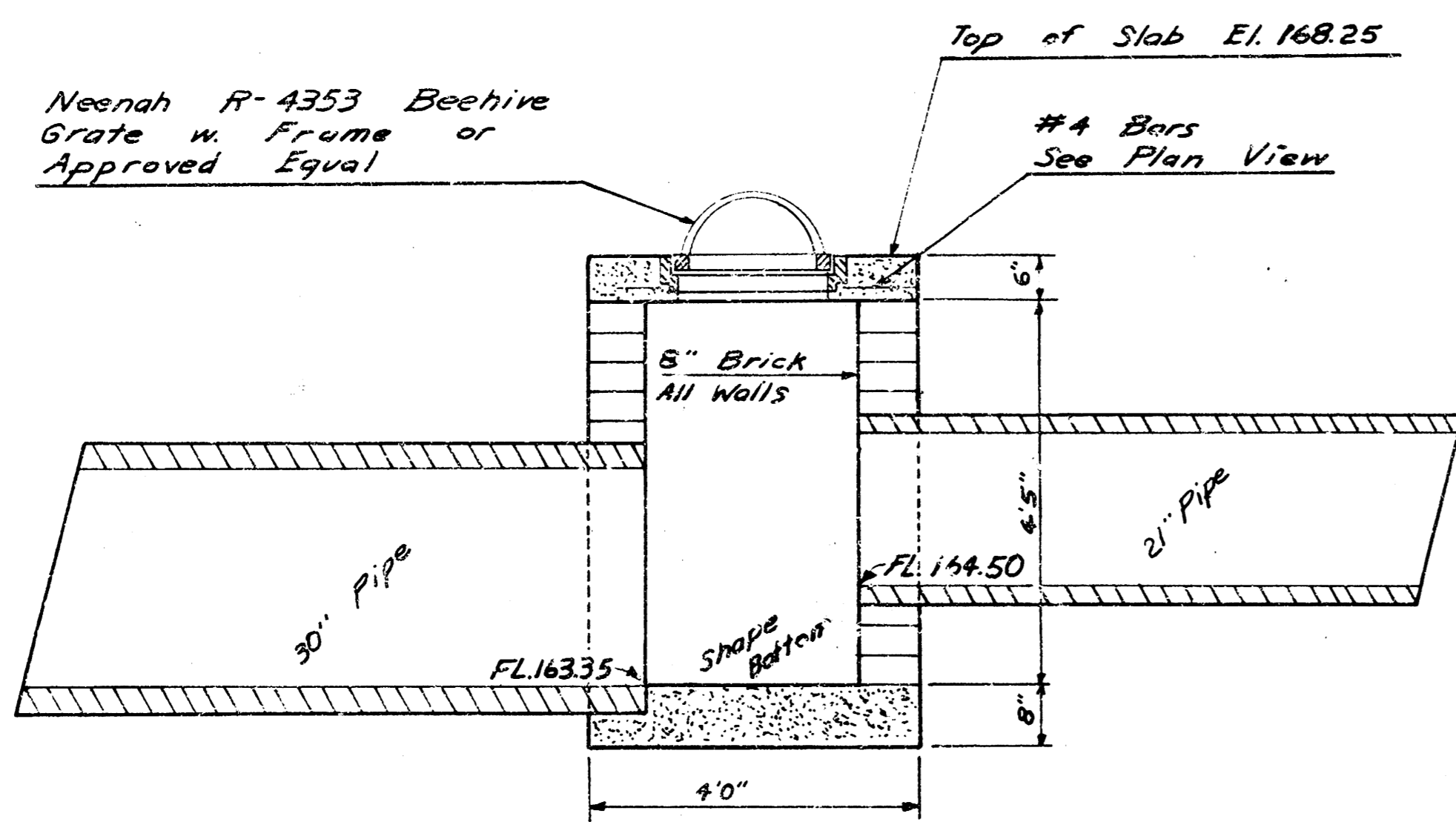


SPECIAL INLET: LINE 4

SCALE: 1/2" = 1'



PLAN:

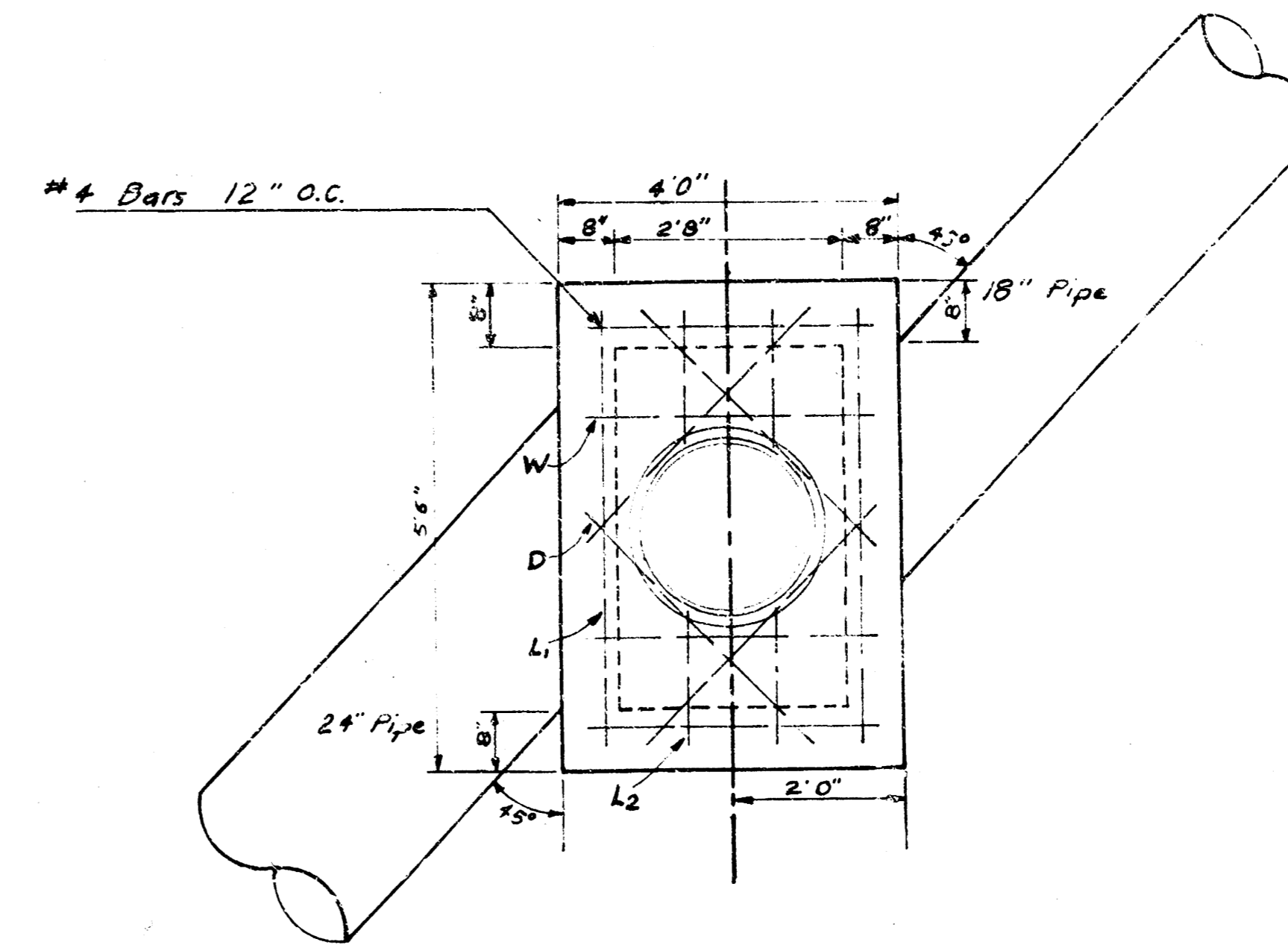


SECTION:

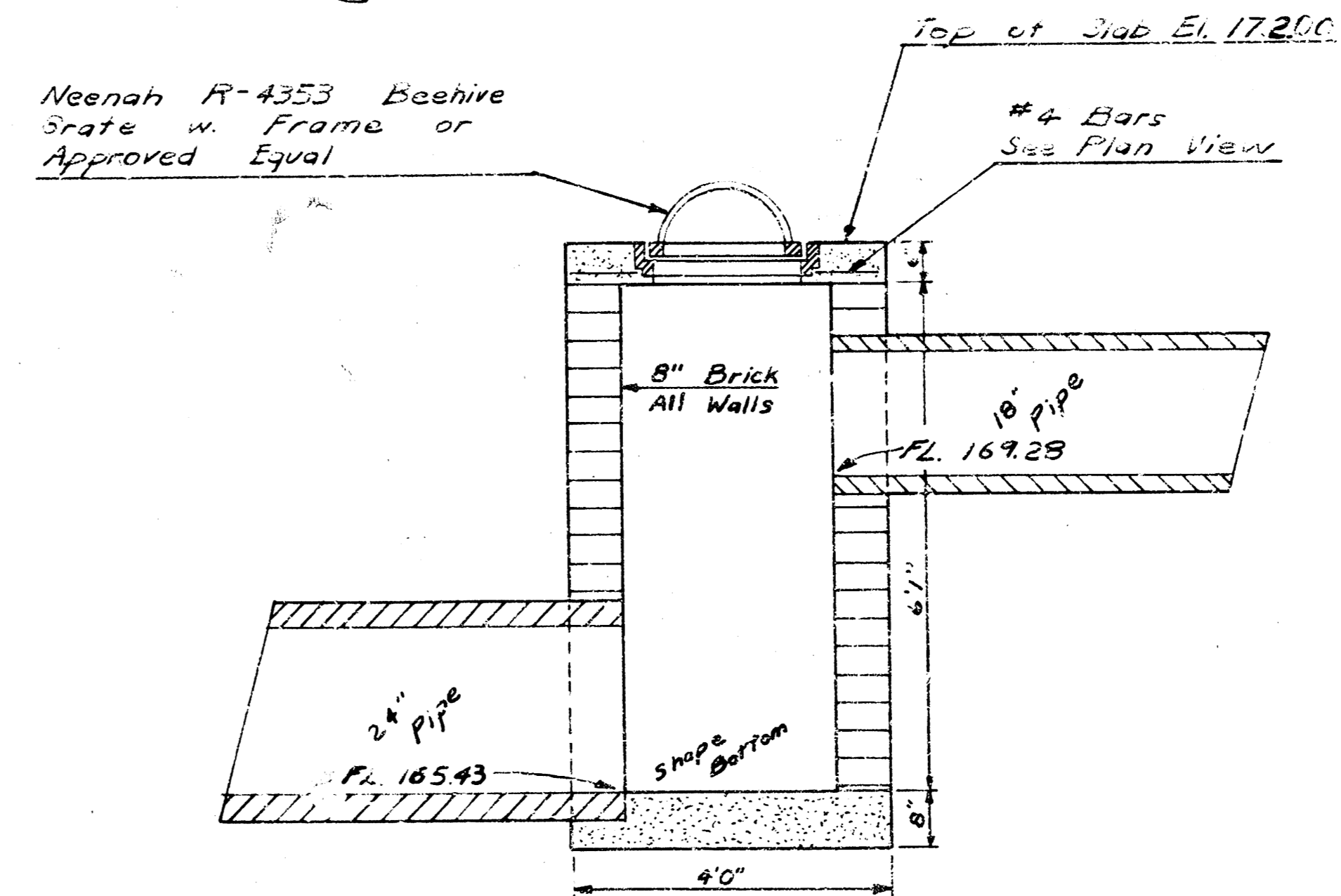
Bar	Quan.	Size	Length	Weight
W	4	#4	3'6"	9.4
L ₁	2	#4	4'6"	5.0
L ₂	4	#4	1'2"	3.1
D	4	#4	3'10"	10.3
Total Lbs. Rebar				28.8
C.F. Concrete				.9
Sq. Ft. 8" Brick Wall				67.7

SPECIAL INLET: LINE 5

SCALE: 1/2" = 1'



PLAN:



SECTION:

Bar	Quan.	Size	Length	Weight
W	4	#4	3'6"	9.4
L ₁	2	#4	5'0"	6.7
L ₂	4	#4	1'5"	3.8
D	4	#4	4'0"	10.7
Total Lbs. Rebar				30.6
C.F. Concrete				1.0
Sq. Ft. 8" Brick Wall				99.4