

S.W.S. NO. 133

STORM SEWERS IN COTTONWOOD VILLAGE

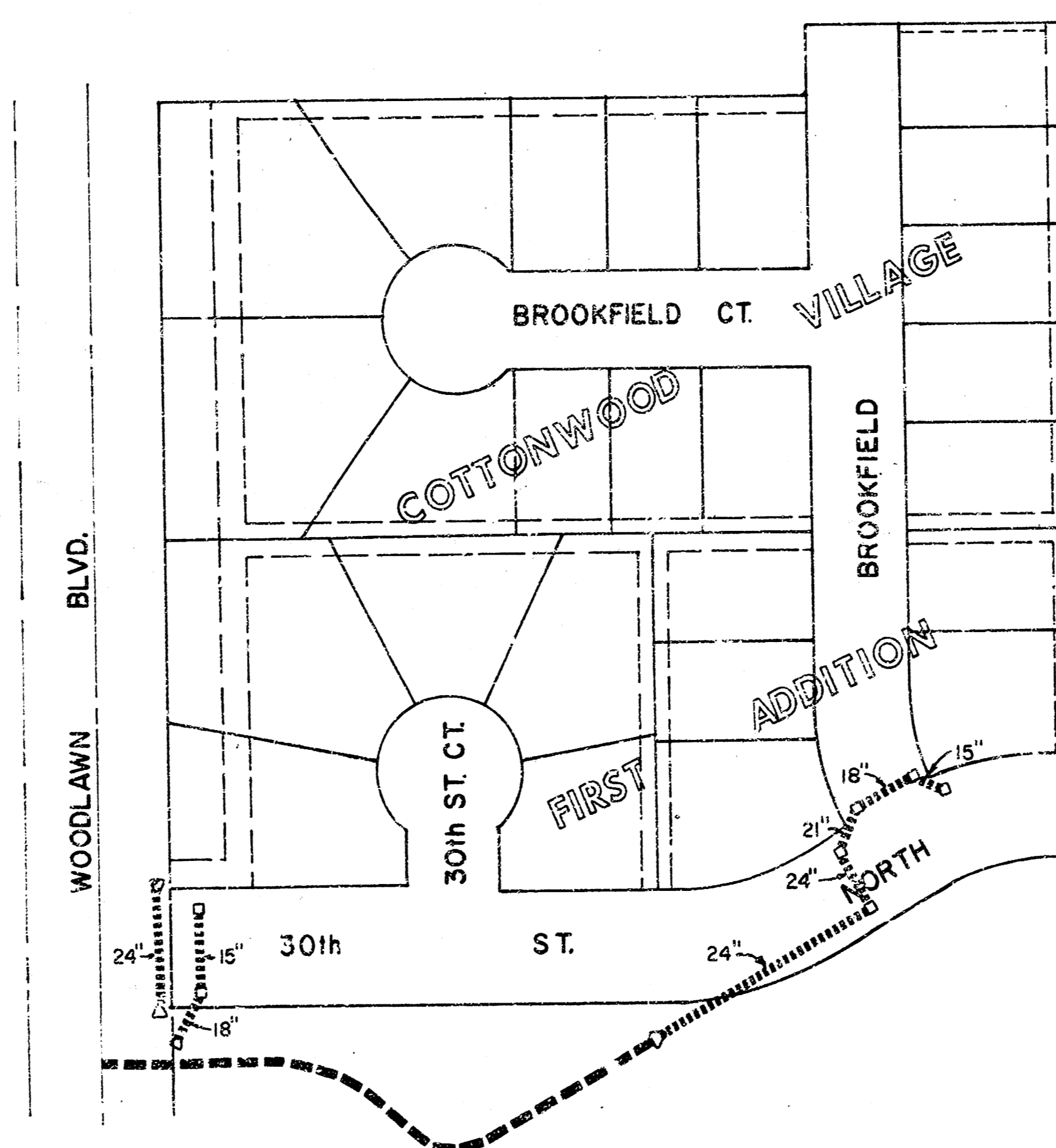
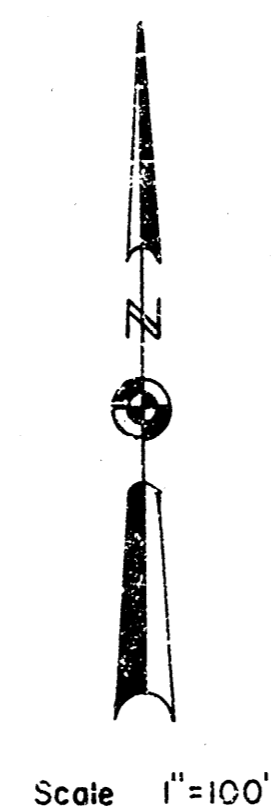
FIRST ADDITION

PROJECT NO.
468-76-245-80529-000-000-001

CITY OF WICHITA, KANSAS
R.W. LINN CITY ENGINEER
JUNE, 1978

INDEX TO DRAWINGS

- 1 TITLE SHEET
- 2 PLAN & PROFILE
- 3 GRADING CROSS SECTIONS
- 4 STANDARD TYPE "IA" CURB INLET



Kenneth H. Brantner

