

# S.W.S. NO. 136

## STORM SEWERS IN COTTONWOOD VILLAGE

### SECOND ADDITION

PROJECT NO.

468-76-245-80574-000-000-001

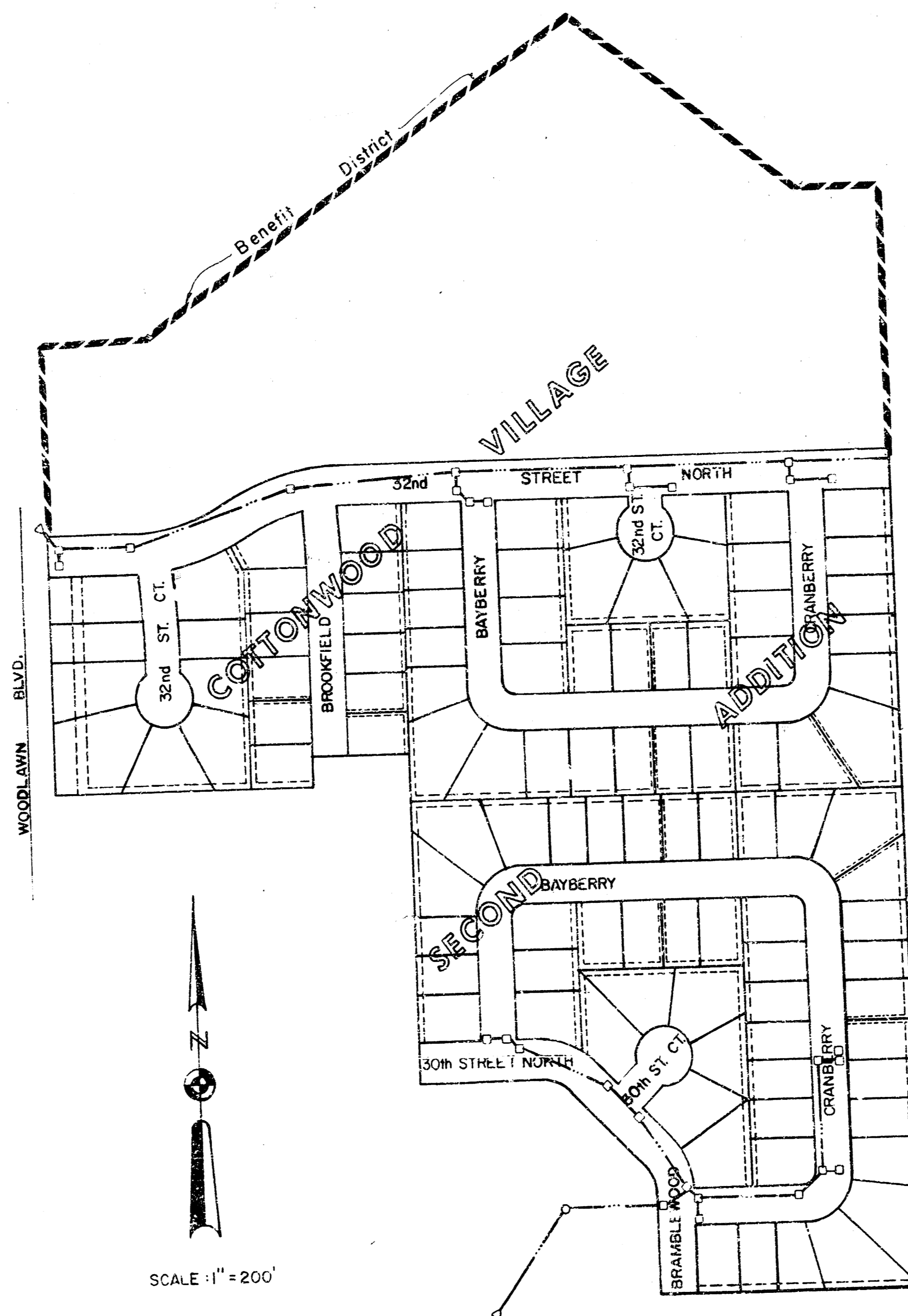
CITY OF WICHITA, KANSAS

R.W. LINN CITY ENGINEER

OCT., 1978

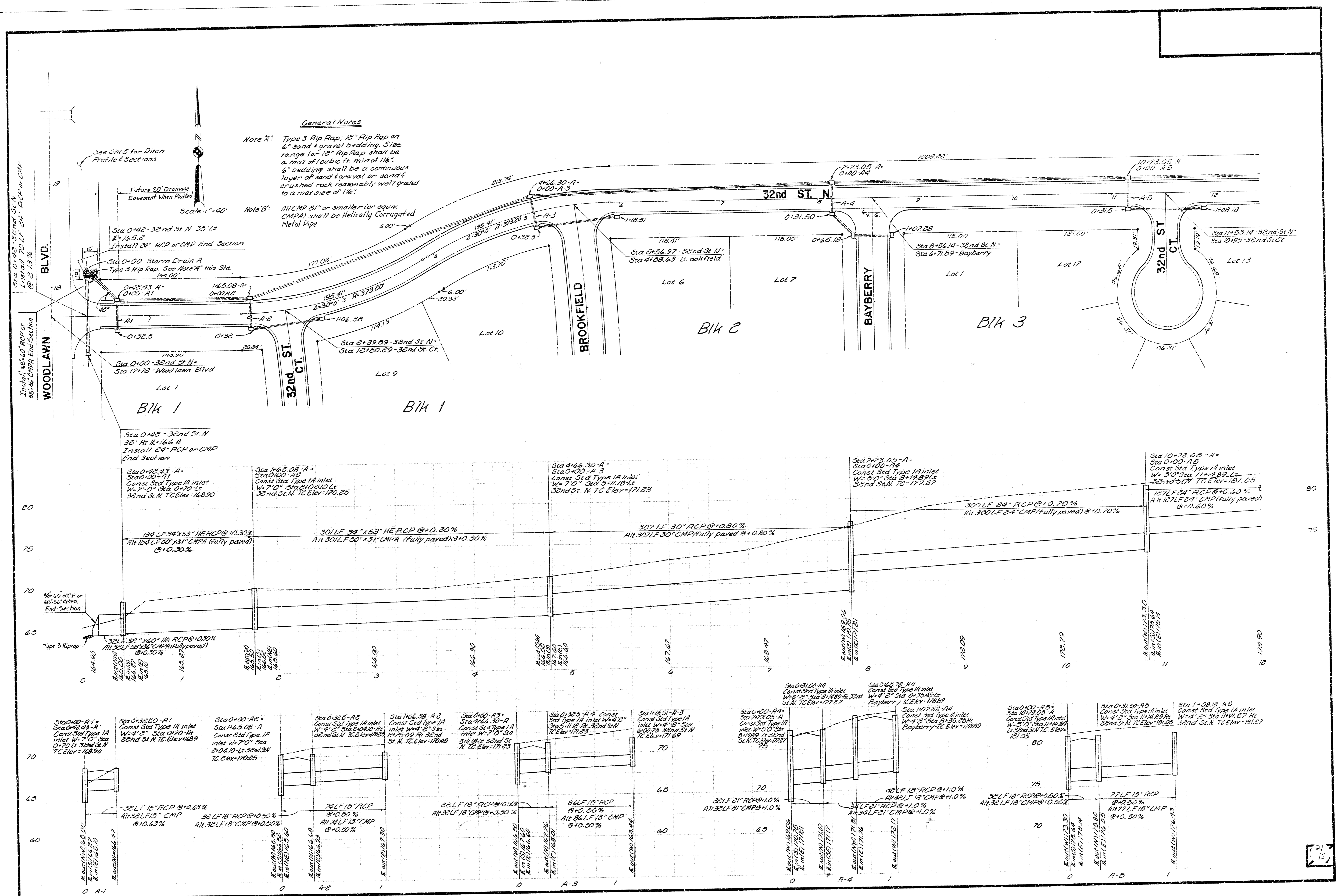
GENERAL NOTE

ALL CMP USED FOR THIS PROJECT SHALL BE FULL ASPHALT COATED DUE TO THE CORROSIVE NATURE OF EXISTING SOILS IN THE AREA



INDEX TO DRAWINGS

- 1 TITLE SHEET
- 2 STORM DRAIN "A"
- 3 STORM DRAIN "A" & "C"
- 4 STORM DRAIN "B"
- 5 PROFILE & SECTIONS
- 6 TYPE IA INLET
- 7-8 MANHOLE DETAILS
- 9 HEADWALL DETAILS



**General Notes**

Note A: Type 3 Rip Rap, 12" Rip Rap on 6" sand & gravel bedding. Slope range for 12" Rip Rap shall be a max of 1 cubic ft. min of 1/8". 6" bedding shall be a continuous layer of sand & gravel or sand & crushed rock reasonably well graded to a max size of 1/8".

Note B: All CMP 24" or smaller for equim. CMPA shall be helically corrugated Metal Pipe

See Sht 5 for Ditch Profile & Sections

Scale: 1" = 40'

Install 36" RCP or 48" CMP End Section @ 0.15%  
 Install 36" RCP or 48" CMP End Section @ 0.15%

Future 10' Drainage Easement When Platified

Sta 0+42 - 32nd St. N 35' Lt  
E. 165.2  
Install 24" RCP or CMP End Section

Sta 0+00 - Storm Drain A  
Type 3 Rip Rap See Note A this Sht.  
144.00'

Sta 0+22.43 - A -  
0+00 - A1

Sta 0+00 - A1  
0+00 - A2

Sta 0+00 - A2  
0+00 - A3

Sta 0+00 - 32nd St. N  
Sta 17+72 - Woodlawn Blvd

Sta 0+42 - 32nd St. N  
35' Rt. E. 164.8  
Install 24" RCP or CMP End Section

Sta 0+42.43 - A -  
Sta 0+00 - A1  
Const. Std. Type IA Inlet  
W=7'0" Sta 0+70 Lt  
32nd St. N T.C. Elev. 168.90

Sta 146.5.08 - A -  
Sta 0+00 - A2  
Const. Std. Type IA Inlet  
W=7'0" Sta 0+70 Lt  
32nd St. N T.C. Elev. 170.25

Sta 4166.30 - A -  
Sta 0+00 - A3  
Const. Std. Type IA Inlet  
W=7'0" Sta 0+70 Lt  
32nd St. N T.C. Elev. 171.23

Sta 7+23.05 - A -  
Sta 0+00 - A4  
Const. Std. Type IA Inlet  
W=5'0" Sta 11+4.88 Lt  
32nd St. N T.C. Elev. 177.27

Sta 10+73.05 - A -  
Sta 0+00 - A5  
Const. Std. Type IA Inlet  
W=5'0" Sta 11+4.88 Lt  
32nd St. N T.C. Elev. 181.05

134 LF 34" x 53" HE RCP @ +0.30%  
Alt. 134 LF 30" x 31" CMPA (fully paved) @ +0.30%

301 LF 34" x 53" HE RCP @ +0.30%  
Alt. 301 LF 30" x 31" CMPA (fully paved) @ +0.30%

307 LF 30" RCP @ +0.80%  
Alt. 307 LF 30" CMPA (fully paved) @ +0.80%

300 LF 24" RCP @ +0.70%  
Alt. 300 LF 24" CMPA (fully paved) @ +0.70%

127 LF 24" RCP @ +0.60%  
Alt. 127 LF 24" CMPA (fully paved) @ +0.60%

32 LF 15" RCP @ +0.63%  
Alt. 32 LF 15" CMP @ +0.63%

32 LF 18" RCP @ +0.50%  
Alt. 32 LF 18" CMP @ +0.50%

74 LF 15" RCP @ +0.50%  
Alt. 74 LF 15" CMP @ +0.50%

32 LF 18" RCP @ +0.50%  
Alt. 32 LF 18" CMP @ +0.50%

66 LF 15" RCP @ +0.50%  
Alt. 66 LF 15" CMP @ +0.50%

32 LF 21" RCP @ +1.0%  
Alt. 32 LF 21" CMP @ +1.0%

42 LF 15" RCP @ +1.0%  
Alt. 42 LF 15" CMP @ +1.0%

32 LF 18" RCP @ +0.50%  
Alt. 32 LF 18" CMP @ +0.50%

77 LF 15" RCP @ +0.50%  
Alt. 77 LF 15" CMP @ +0.50%

32 LF 18" RCP @ +0.50%  
Alt. 32 LF 18" CMP @ +0.50%

77 LF 15" RCP @ +0.50%  
Alt. 77 LF 15" CMP @ +0.50%

