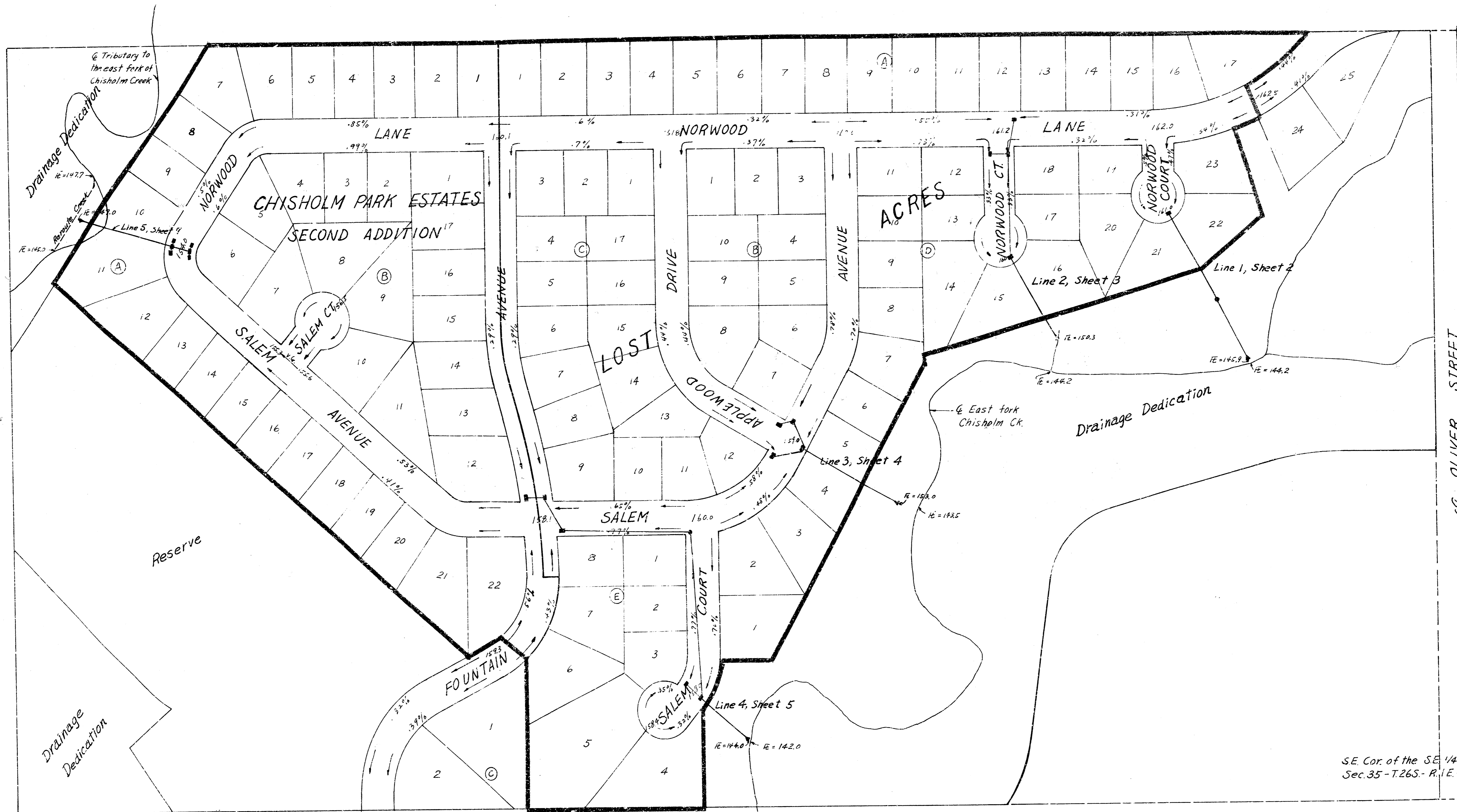


STORM WATER SEWER NO. 141

CITY OF WICHITA, KS.

DEAN SELLERS - ACTING CITY ENGINEER

PROJECT NO. 468 76 245 80596 000 000 001



STORM WATER SEWER NO. 141
CITY OF WICHITA, KS.
DEAN SELLERS - ACTING CITY ENGINEER
PROJECT NO. 468 76 245 80596 000 000 001

1. This plan shows the location of the storm water sewer line and the location of the manholes. The sewer line is shown as a solid line and the manholes are shown as circles with an 'M' inside. The sewer line is located in the center of the block and runs north-south. The manholes are located at the corners of the block and at the intersections of the streets. The sewer line is shown as a solid line and the manholes are shown as circles with an 'M' inside.

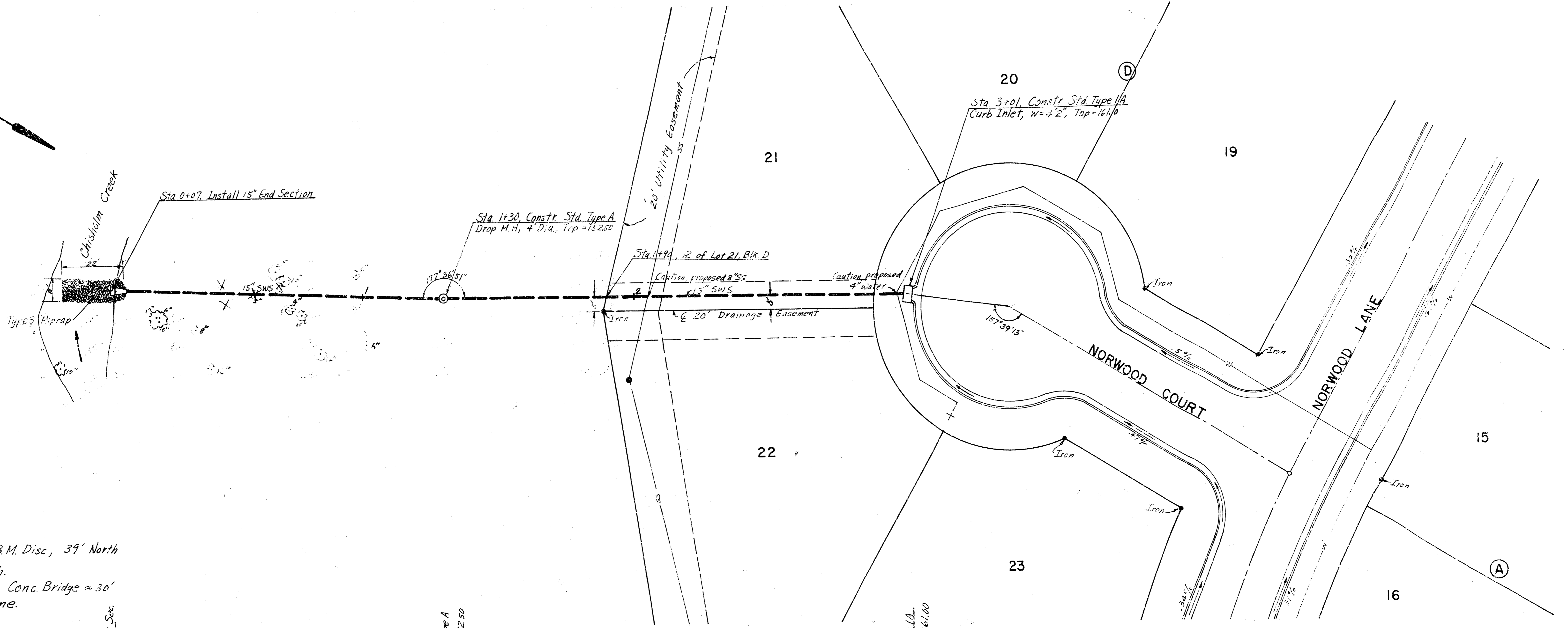
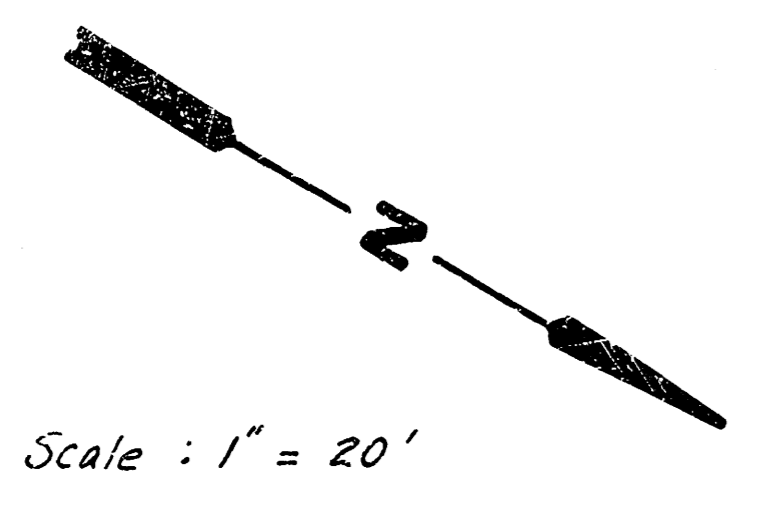
2. The sewer line is shown as a solid line and the manholes are shown as circles with an 'M' inside. The sewer line is located in the center of the block and runs north-south. The manholes are located at the corners of the block and at the intersections of the streets. The sewer line is shown as a solid line and the manholes are shown as circles with an 'M' inside.

3. The sewer line is shown as a solid line and the manholes are shown as circles with an 'M' inside. The sewer line is located in the center of the block and runs north-south. The manholes are located at the corners of the block and at the intersections of the streets. The sewer line is shown as a solid line and the manholes are shown as circles with an 'M' inside.

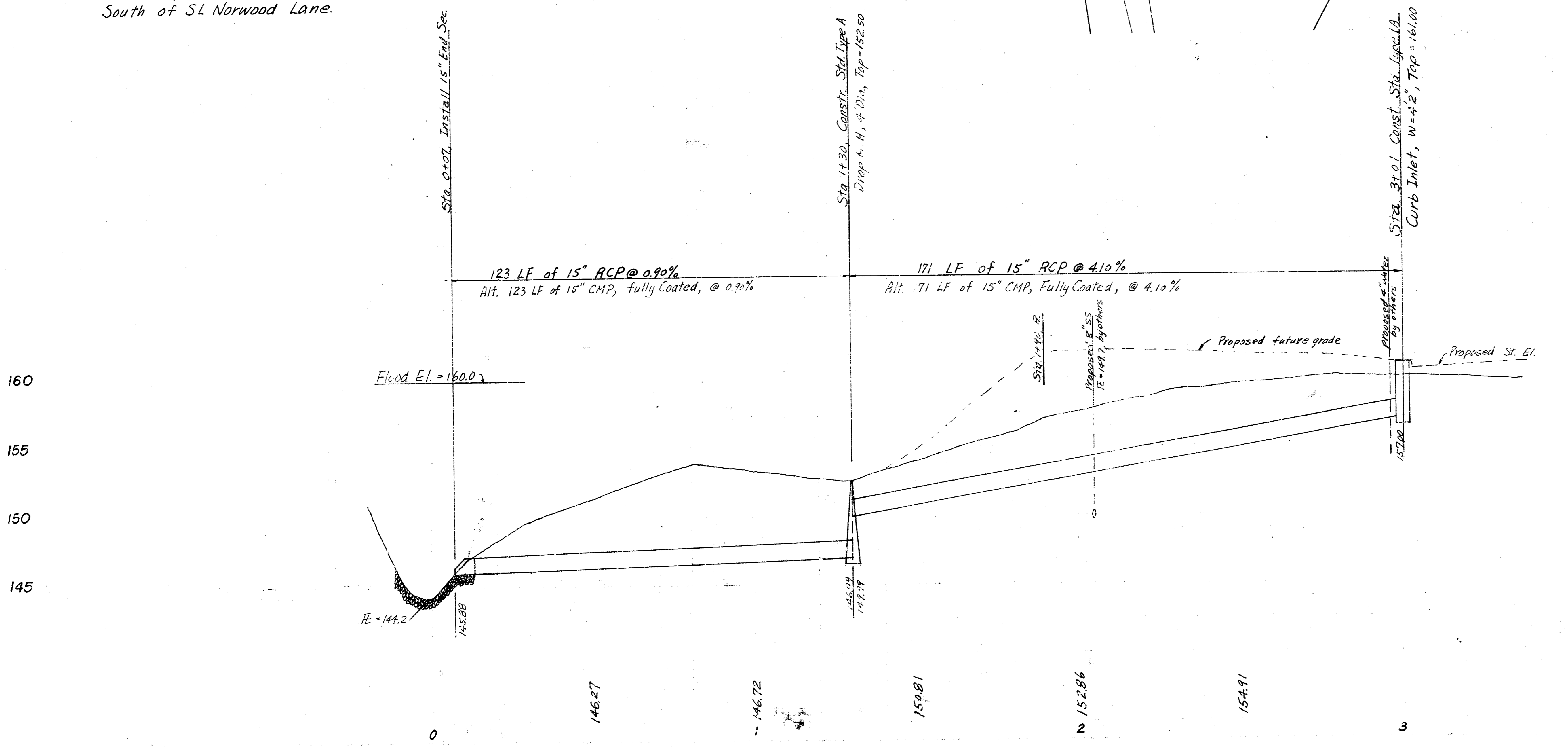
4. The sewer line is shown as a solid line and the manholes are shown as circles with an 'M' inside. The sewer line is located in the center of the block and runs north-south. The manholes are located at the corners of the block and at the intersections of the streets. The sewer line is shown as a solid line and the manholes are shown as circles with an 'M' inside.

5. The sewer line is shown as a solid line and the manholes are shown as circles with an 'M' inside. The sewer line is located in the center of the block and runs north-south. The manholes are located at the corners of the block and at the intersections of the streets. The sewer line is shown as a solid line and the manholes are shown as circles with an 'M' inside.

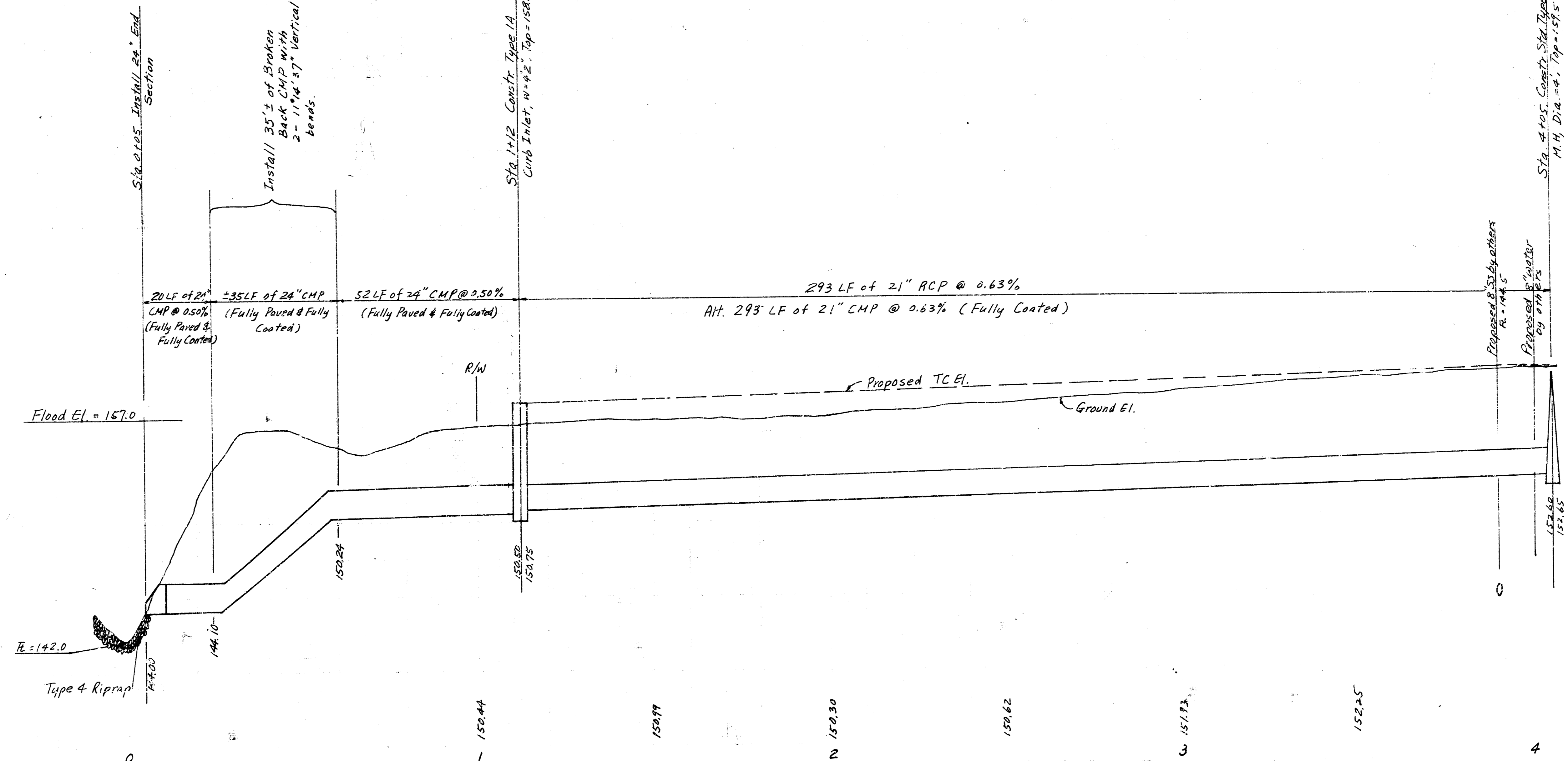
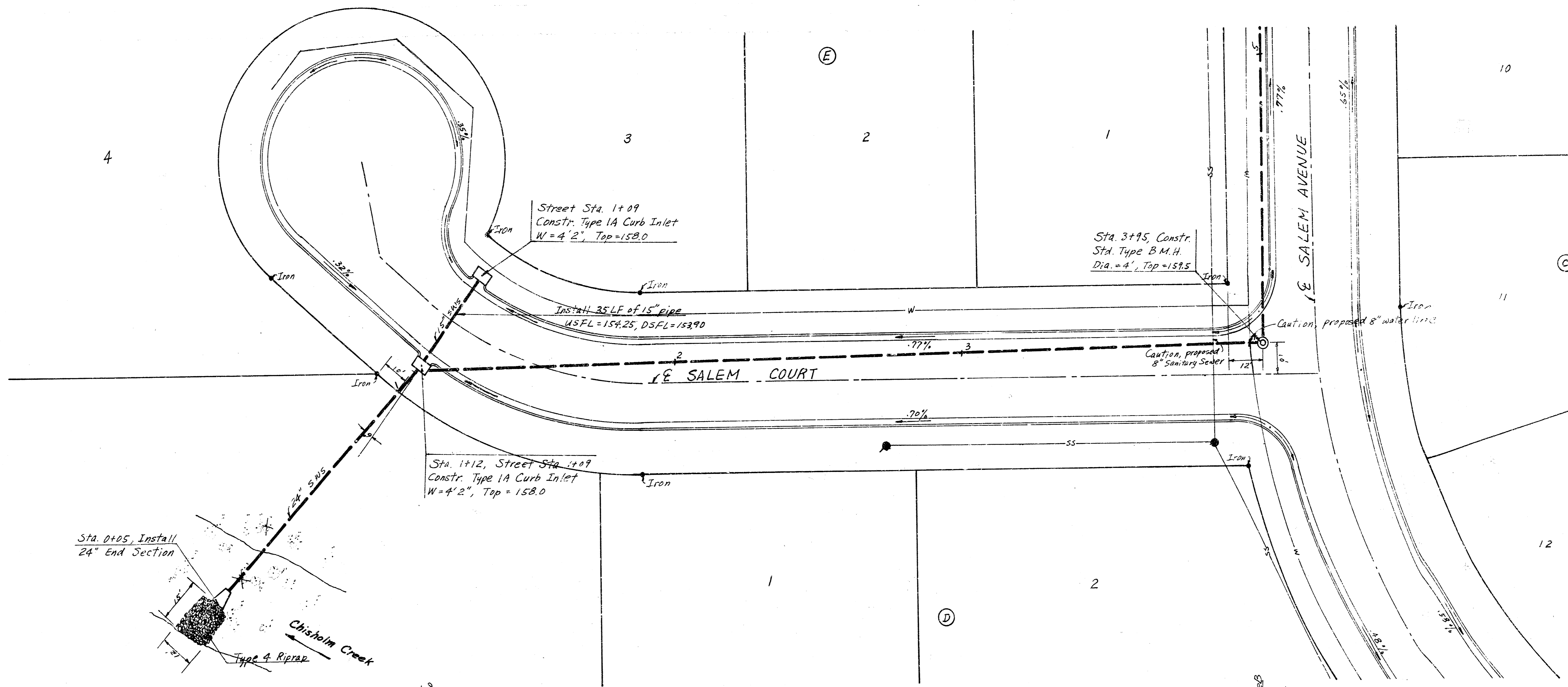
SE Cor. of the SE 1/4
Sec. 35 - T.26S - R.1E



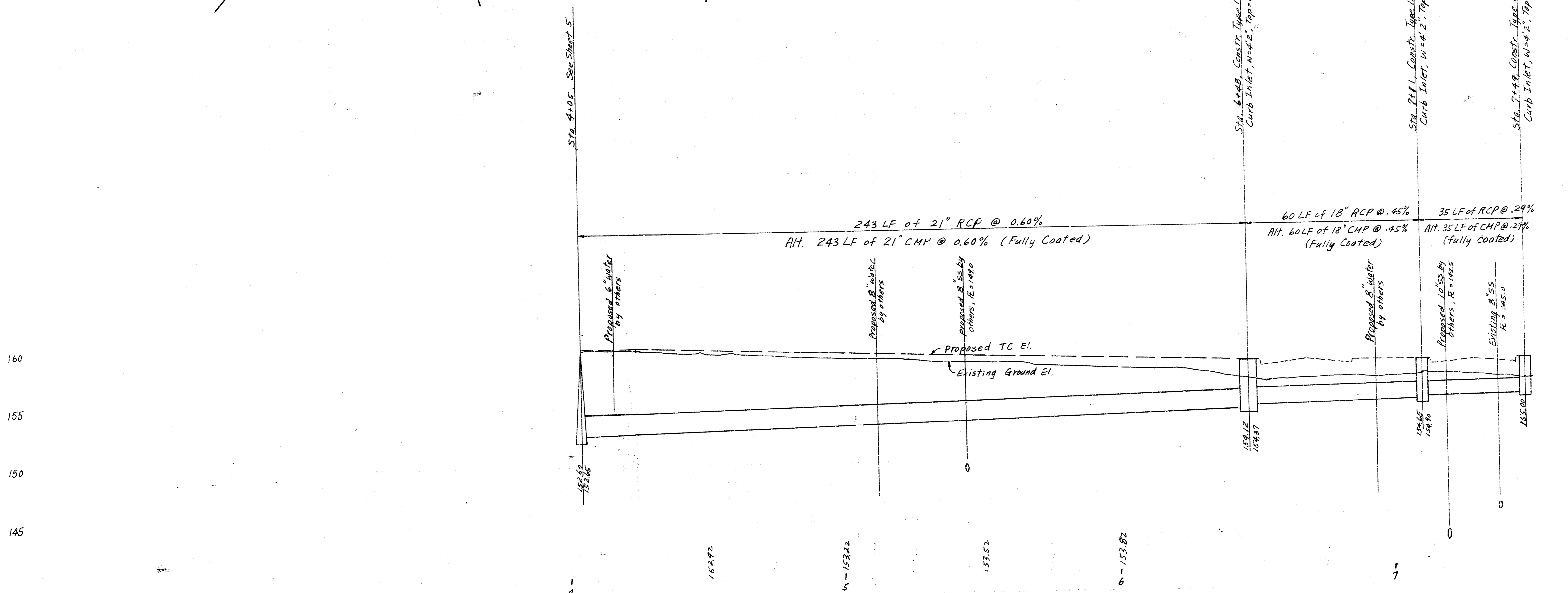
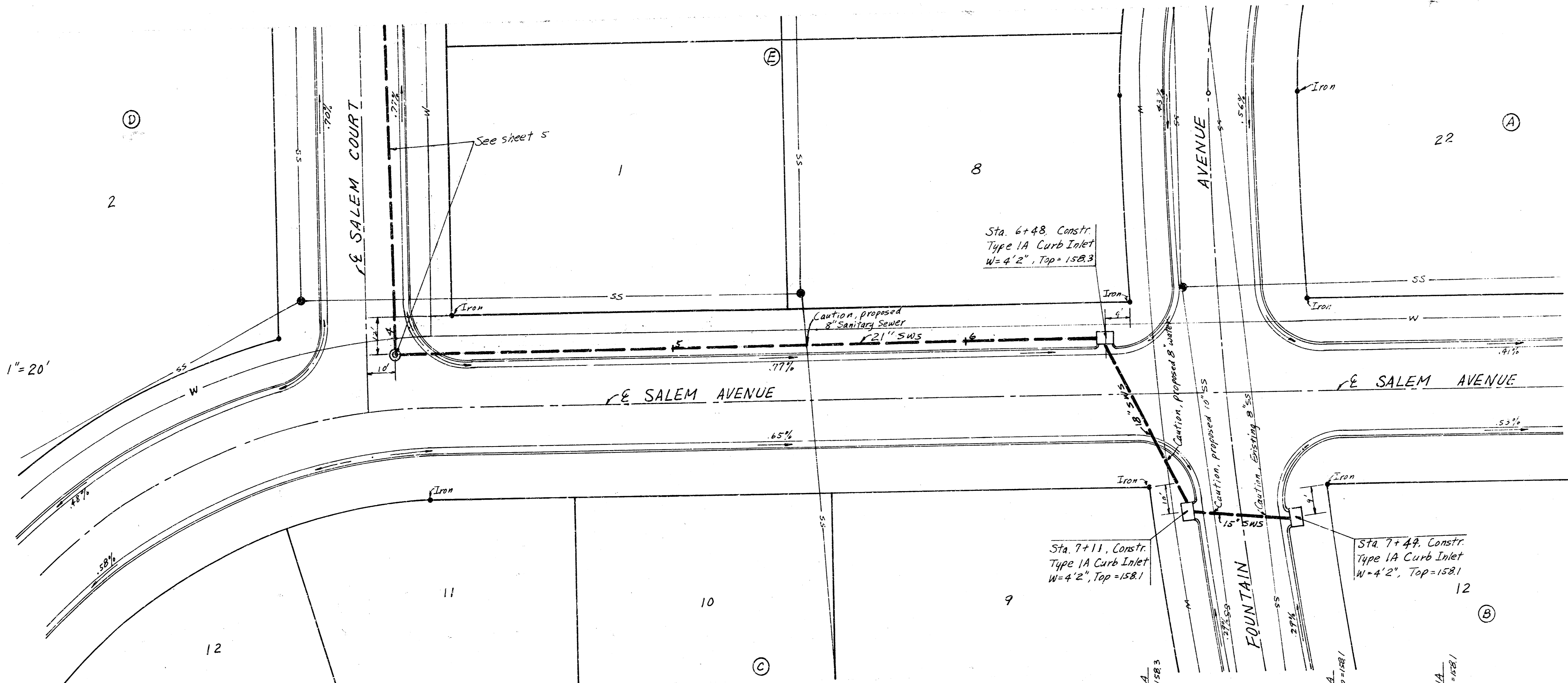
B.M. 157.68 Oliver & 29th St. N., City B.M. Disc, 39' North & 33' East of \odot of both.
 B.M. 160.10 Brass Cap on N.E. Corner Conc. Bridge \approx 30' South of S.L. Norwood Lane.

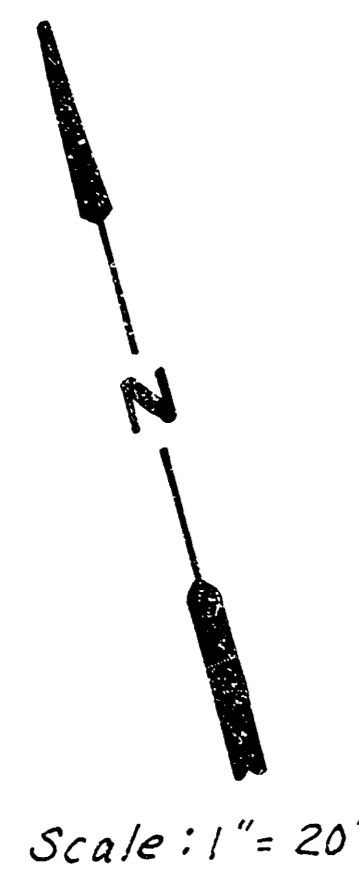


Scale: 1" = 20'



Scale: 1" = 20'





Scale: 1" = 20'

