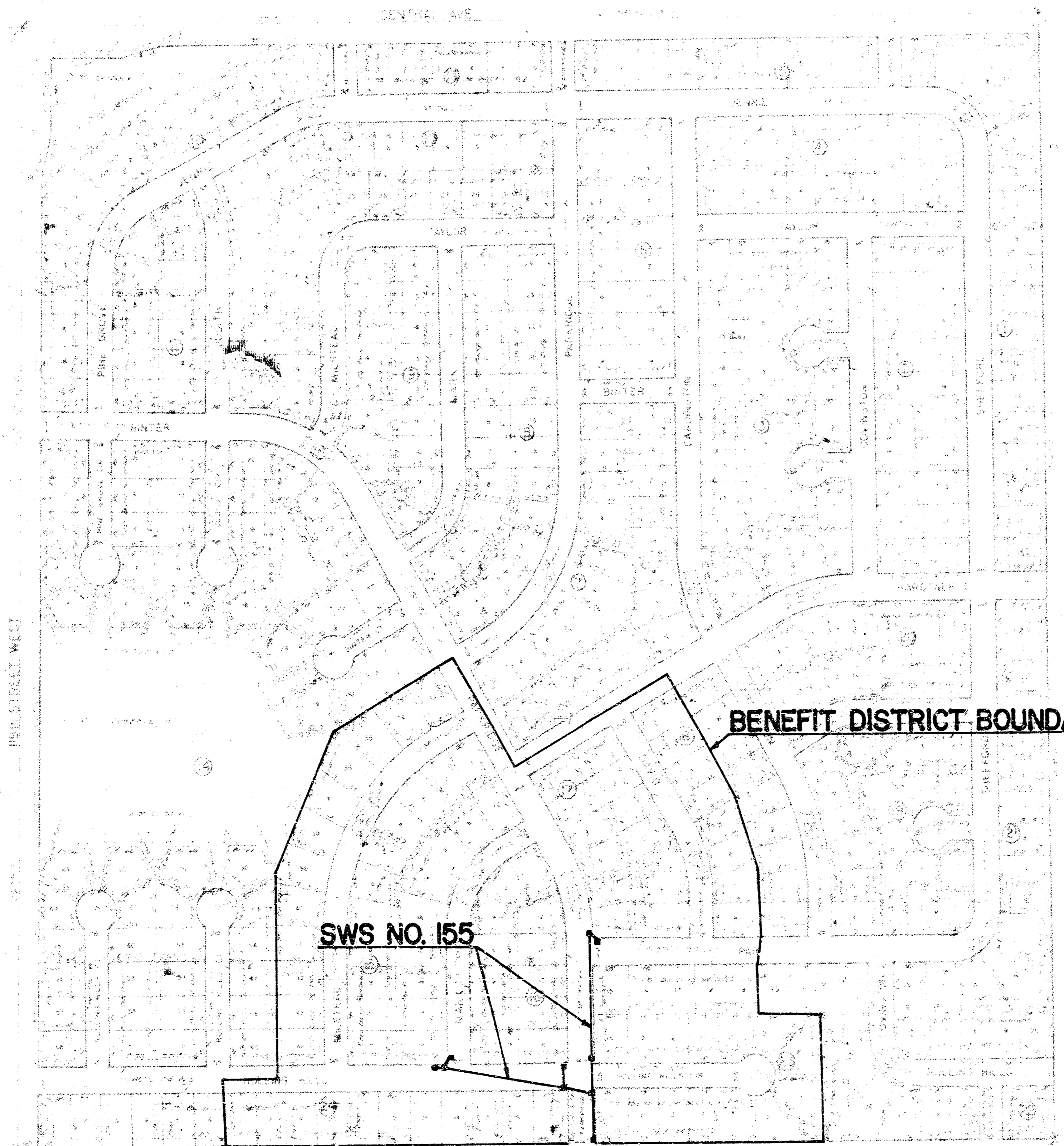


# STORM WATER SEWER NO. 155

GENERAL NOTES

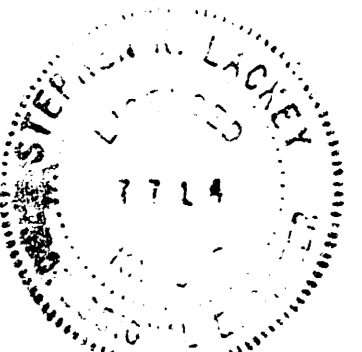
1. TYPE I-A CURB INLETS SHALL BE AS SHOWN ON CITY OF WICHITA STANDARD DRAWINGS FOR TYPE I-A CURB INLET DATED OCTOBER, 1978, OR FOR PRE-CAST TYPE I-A CURB INLET DATED AUGUST, 1979.
2. THE FIELD ENGINEER SHALL LOCATE CURB INLETS WITH REFERENCE TO PROPOSED PAVING PLANS OF THE PERTINENT STREETS.
3. CONTRACTOR SHALL COORDINATE WORK WITH PAVING, WATER, SANITARY SEWER, GAS, AND OTHER CONTRACTORS, UTILITY COMPANIES, AND OTHER AGENCIES INVOLVED WITH THIS PROJECT SITE DEVELOPMENT.
4. ALL CONCRETE SHALL BE "6-SACK CONCRETE" UNLESS OTHERWISE NOTED.
5. FIELD ENGINEER SHALL TAKE TIES TO ALL IRONS AND REPLACE TO ORIGINAL LOCATION.



DEAN SELLERS, ACTING CITY ENGINEER  
CITY OF WICHITA, KANSAS

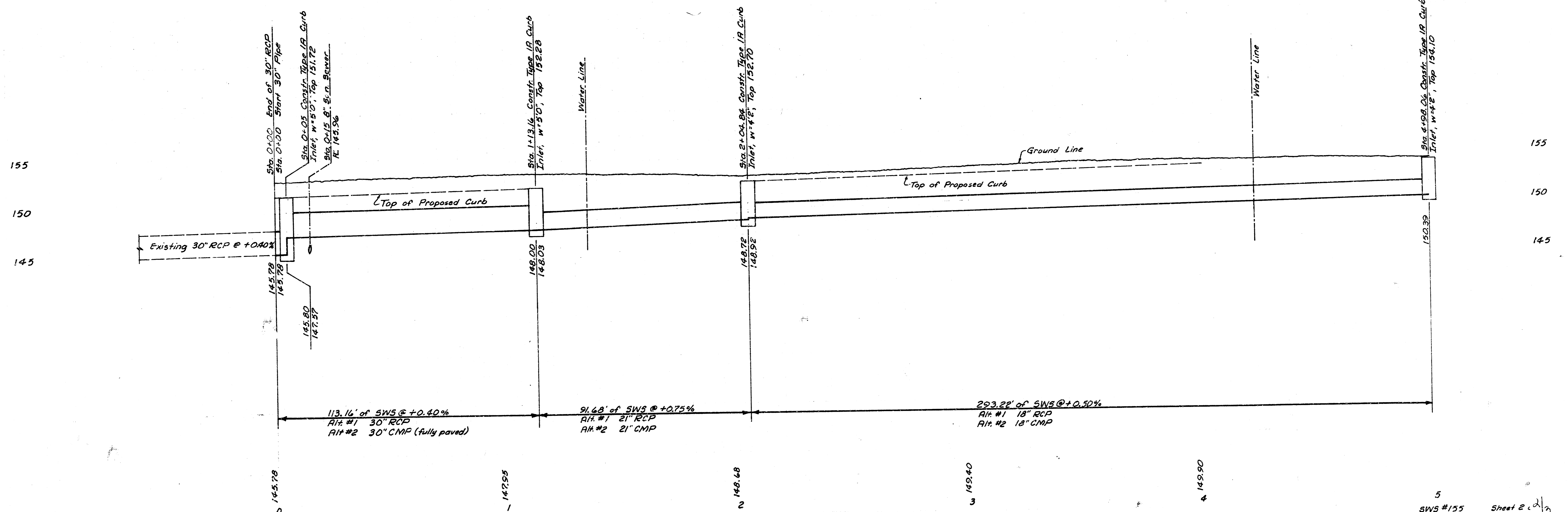
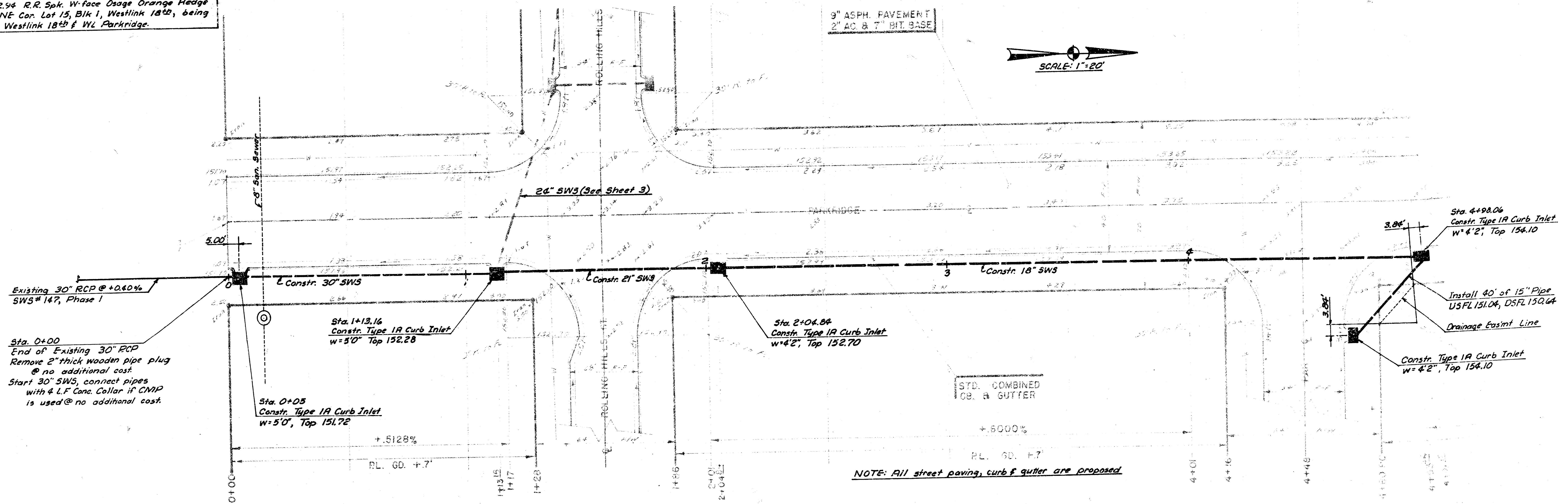
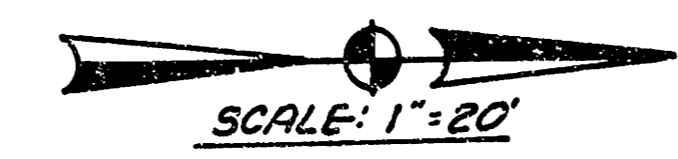
PROJECT NO. 468-76-245-80726-000-000-001

DATE: \_\_\_\_\_

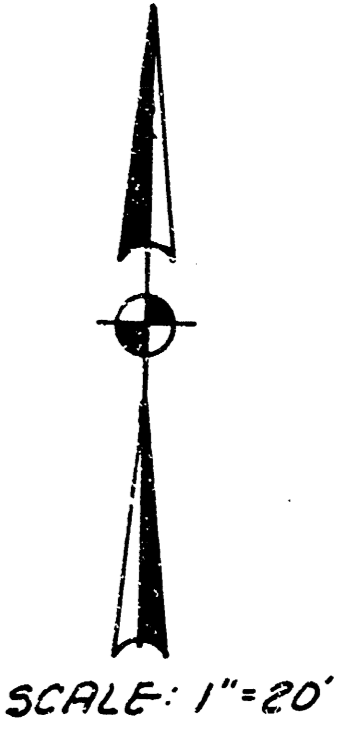
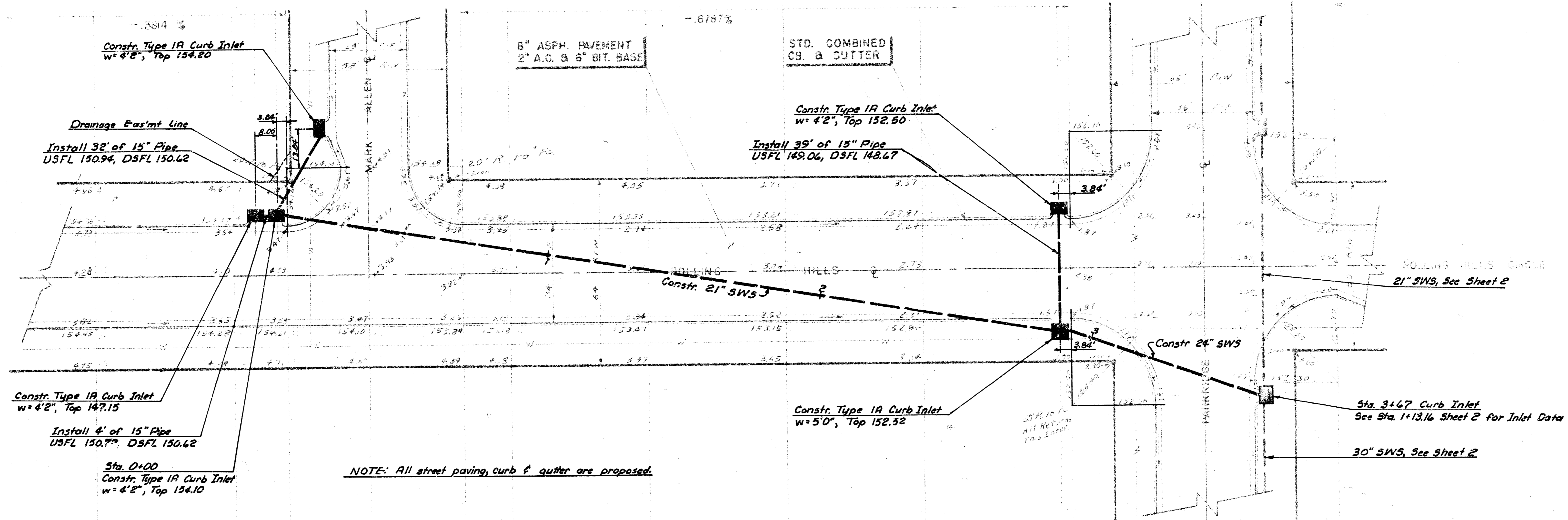


B.M. 152.94 R.R. Spk. W-face Osage Orange Hedge  
 @ NE Cor. Lot 15, Blk 1, Westlink 18th, being  
 NL Westlink 18th f WL Parkridge.

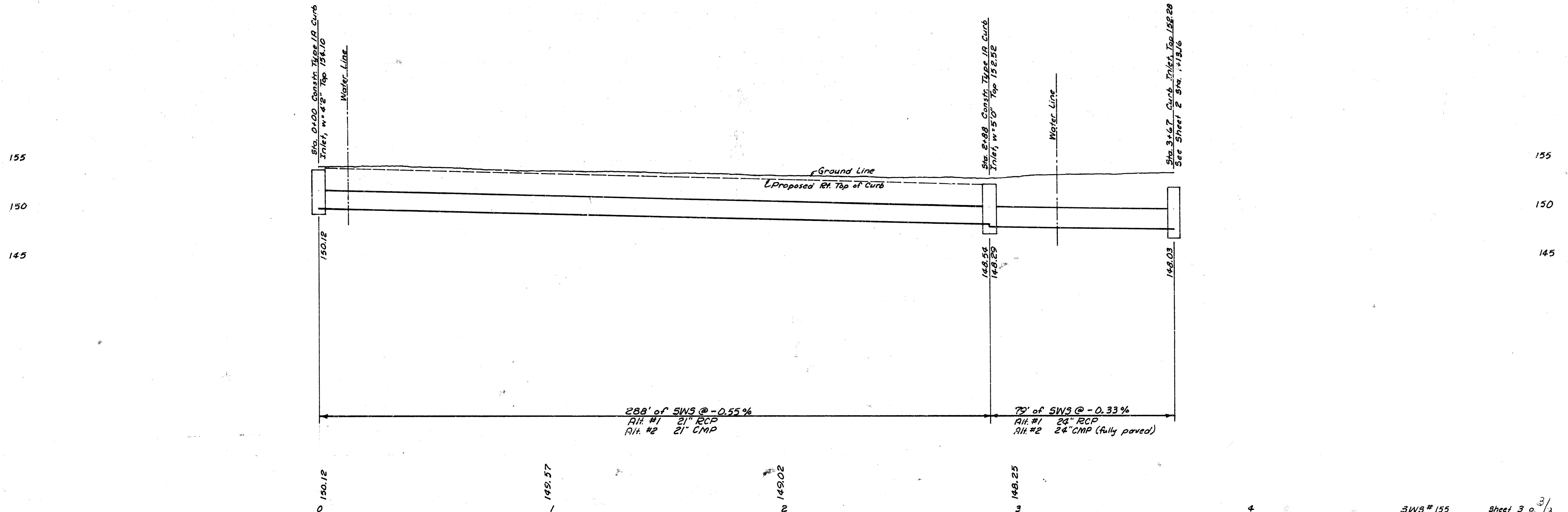
9" ASPH. PAVEMENT  
 2" AC & 7" BIT. BASE



BM. 153.80 R.R. Sph. W-face Power Pole 122' N. of  
2nd Street, E-side of 119th St West (1/4 Cor.)



NOTE: All street paving, curb & gutter are proposed.



WSK