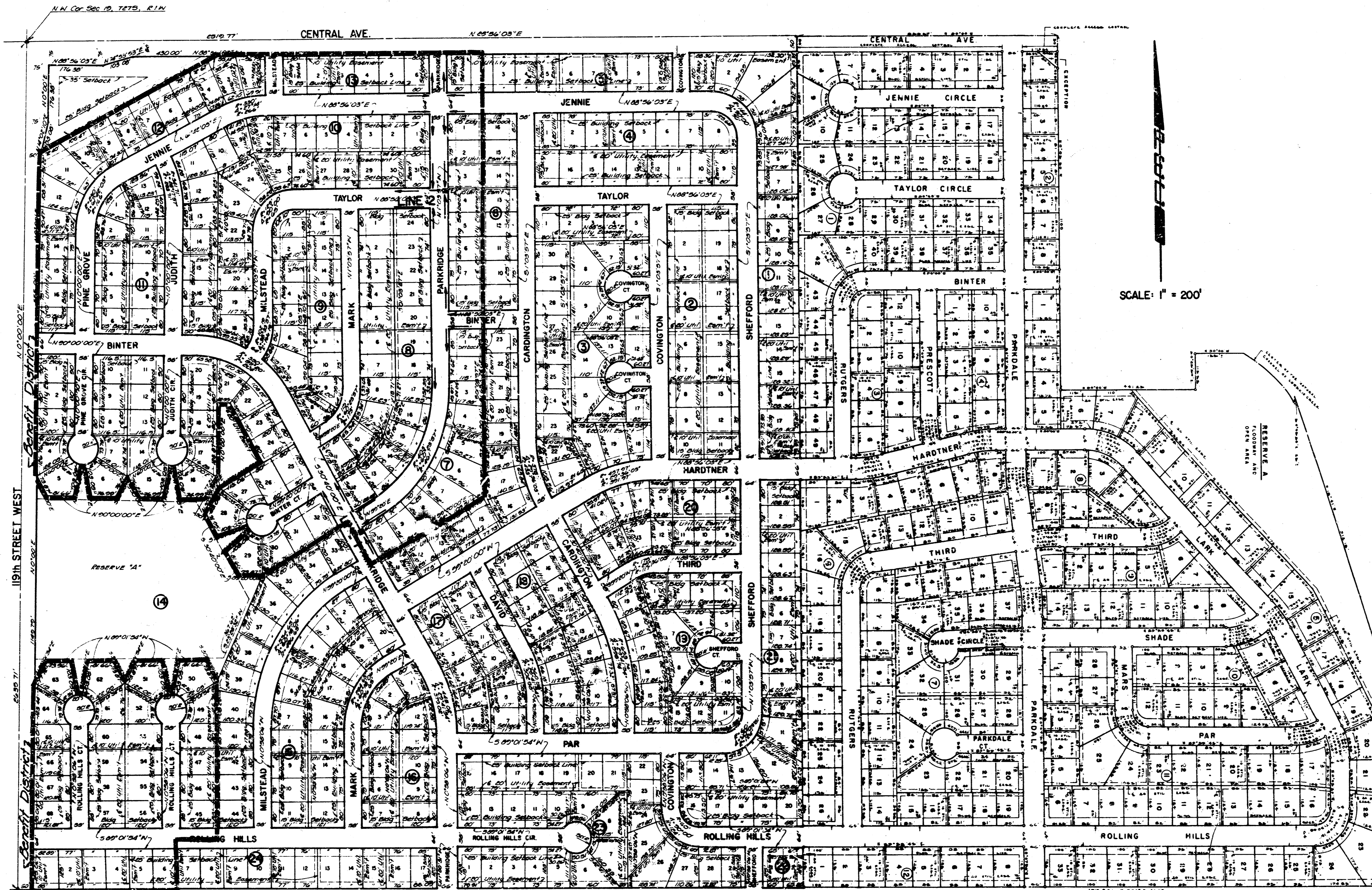


CITY OF WICHITA, KANSAS
STORM WATER SEWER NO. 156 (PHASE I)
 DEAN S. SELLERS, ACTING CITY ENGINEER

INDEX OF SHEETS

- | | |
|---|----------------------------|
| 1 | TITLE SHEET |
| 2 | LINES 1 & 2 |
| 3 | TYPE IA CURB INLET DETAILS |



SCALE: 1" = 200'

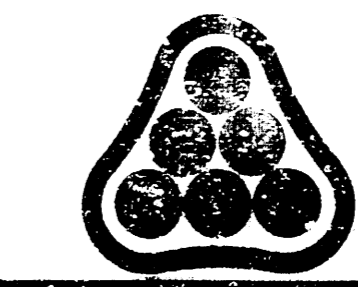
GENERAL NOTES

1. CONTRACTOR SHALL COORDINATE WORK WITH PAVING AND SANITARY CONTRACTORS, AND CONTACT RELEVANT UTILITY COMPANIES AND OTHER AGENCIES INVOLVED WITH THIS PROJECT SITE DEVELOPMENT.
2. FIELD ENGINEER SHALL TAKE TIES TO ALL IRONS AND THIMBLES IN THE PROJECT AREA BEFORE CONSTRUCTION BEGINS. FIELD ENGINEER SHALL REPLACE ALL SUCH IRONS AND THIMBLES DISTURBED DURING CONSTRUCTION.
3. THE TOPS OF INLETS AND MANHOLES AS NOTED ON THE PLANS MAY VARY SO AS TO MEET PROPOSED TOP OF CURB ELEVATIONS OR PAVEMENT ELEVATIONS. THE FIELD ENGINEER SHALL LOCATE INLETS AND MANHOLES WITH REFERENCE TO PROPOSED PAVING PLANS OF THE PERTINENT STREETS.
4. ALL METAL PIPES SHALL BE HELICALLY CORRUGATED PIPE, AND SHALL BE SMOOTH FLOW PIPES FOR SIZES 24" DIAMETER OR LARGER. ALL CONNECTIONS FOR THESE PIPES SHALL BE FAIRLY WATERTIGHT CONSTRUCTED USING HUGGER TYPE COUPLER OR EQUAL.
5. ALL CONCRETE SHALL BE "6-SACK CONCRETE" UNLESS OTHERWISE NOTED.
6. CONTRACTOR SHALL AVOID UNCOVERING EXISTING WATERLINES UNLESS ABSOLUTELY NECESSARY. UNCOVERING SHALL BE DONE ONLY IN THE PRESENCE OF A WATER DEPT. ENGINEER.
7. CONTRACTOR SHALL HAVE THE OPTION TO INSTALL PRE-CAST TYPE I-A CURB INLET IN LIEU OF THE BRICK TYPE CONSTRUCTION. SEE STANDARD DETAIL PRE-CAST TYPE I-A INLET DATED AUGUST, 1979.
8. EXCESS TRENCH MATERIAL SHALL BE WASTED AS DIRECTED BY SITE ENGINEER. THIS WORK SHALL BE CONSIDERED INCIDENTAL TO THE PROJECT.

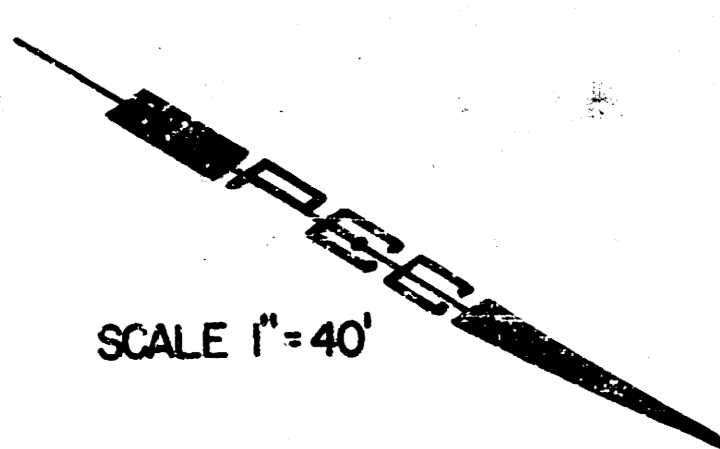
BENCH MARKS

- BM-14740 - "a" cut in N. end of conc. epillway approx. 35' S of N.L. Hardtner & 40'E of W.L. of Westlink 17th Addr.
- BM-15437 - R.R. Spike in S. face RR, N. side Central & 3' W. of hedge N., 1/2 mile W. of Maize Road.
- BM-16052 - R.R. Spike in H.L.P. 30'E & 23' N. of NE. Cor. of Central & Parkridge.

No.	Revision	By	Date
CITY OF WICHITA, KANSAS DEAN S. SELLERS, CITY ENGINEER TITLE SHEET PHASE I STORM WATER SEWER 156 PROJ. NO. 468-76-245-80725-000-000-001 PROFESSIONAL ENGINEERING CONSULTANTS, P.A. ENGINEERS WICHITA, KANSAS			
Designed by <i>CSS</i>		Job No. <i>7001-001</i>	
Drawn by		Date <i>October 1979</i>	
		Sht. 1	of 3

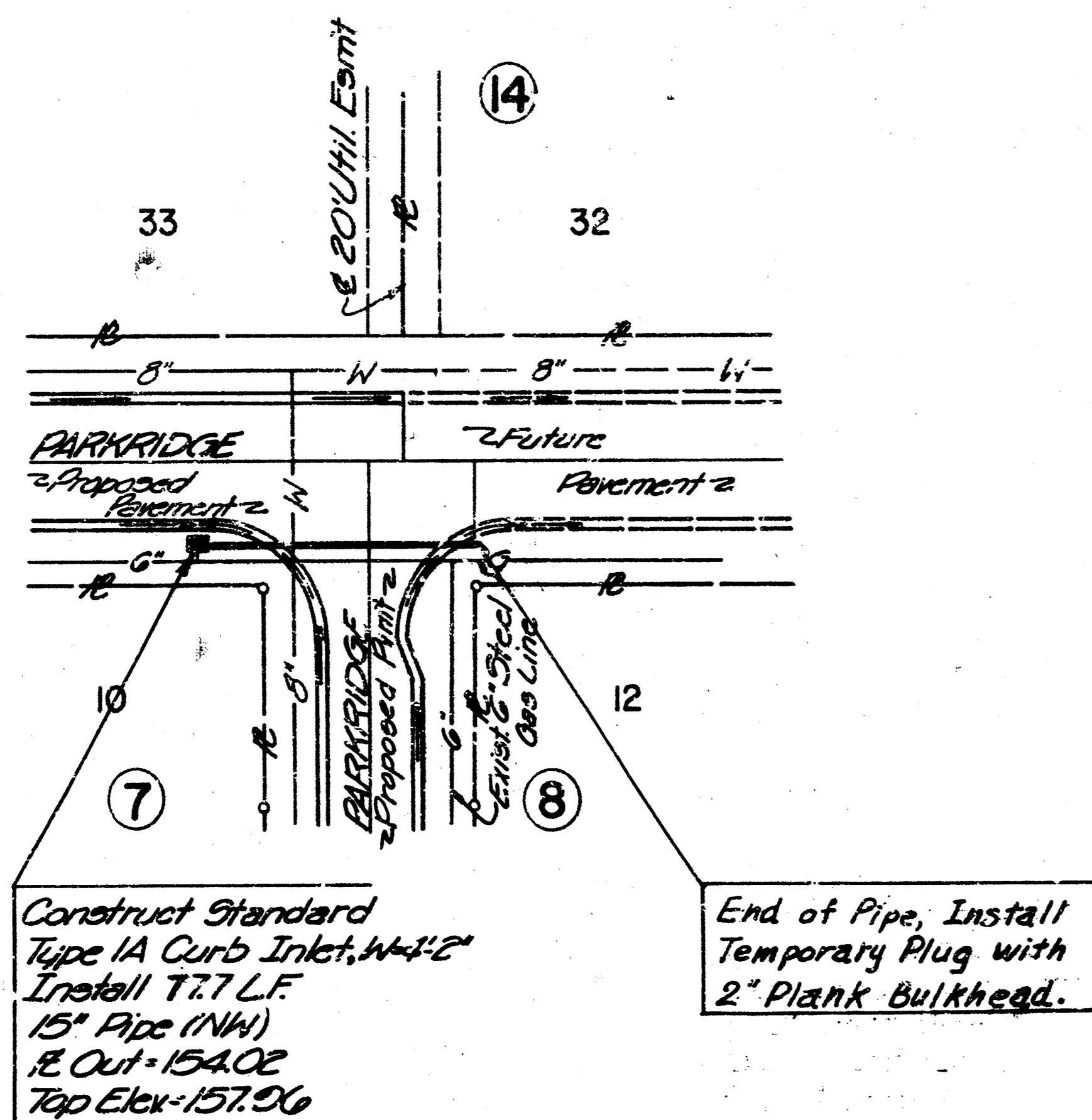


FILMED FROM THE BEST AVAILABLE COPY....



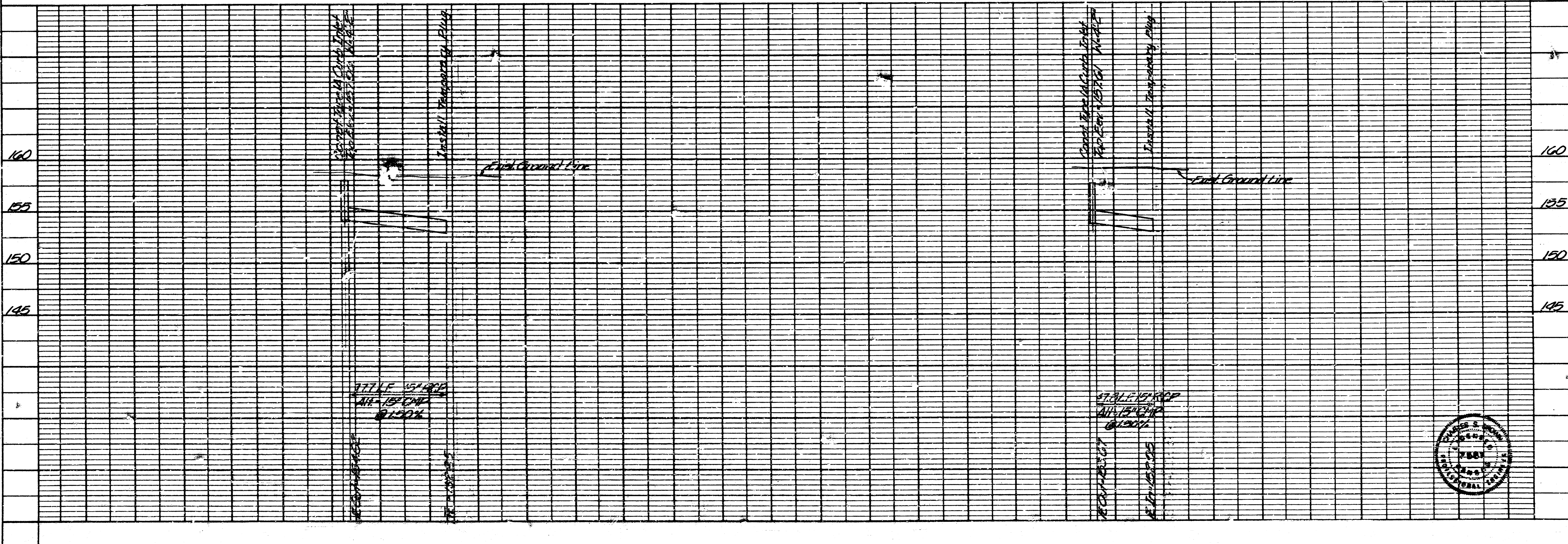
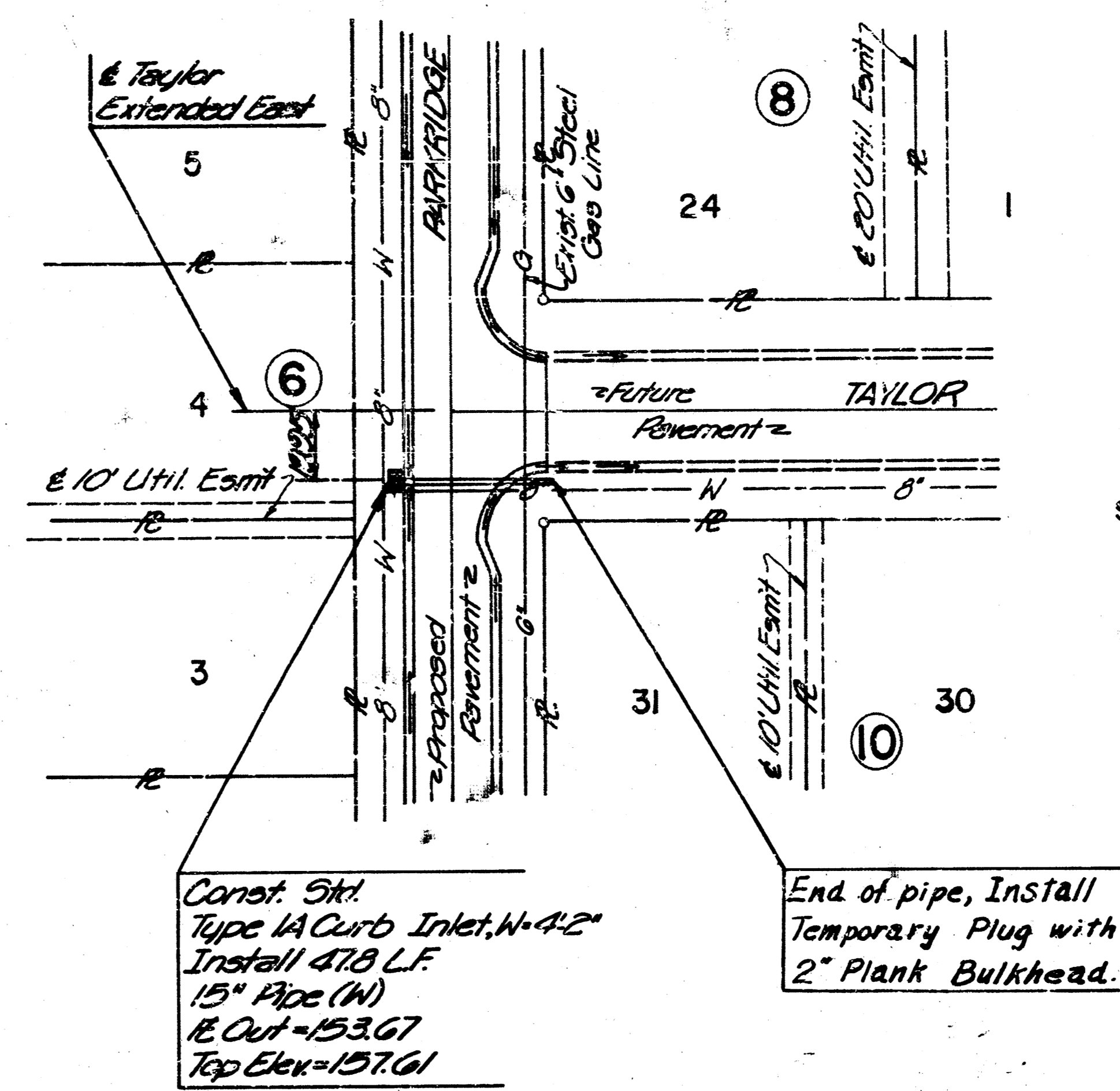
LINE 1 (LATERAL)
WESTLINK NINETEENTH ADDITION

SCALE 1"=40'



LINE 2 (LATERAL)
WESTLINK NINETEENTH ADDITION

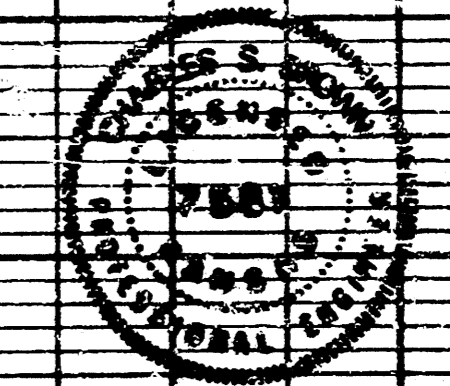
SCALE 1"=40'

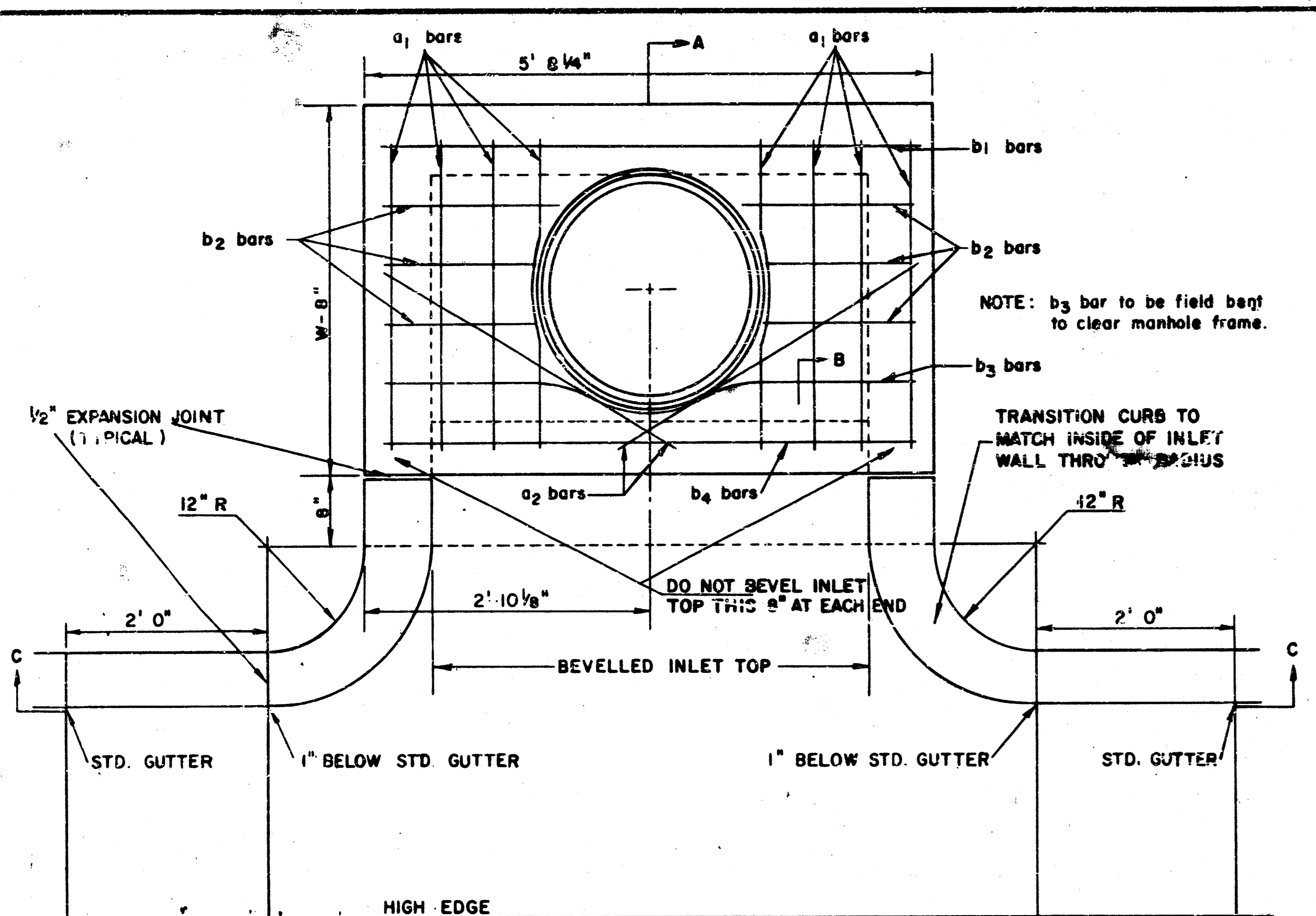


No.	Revision	By	Date

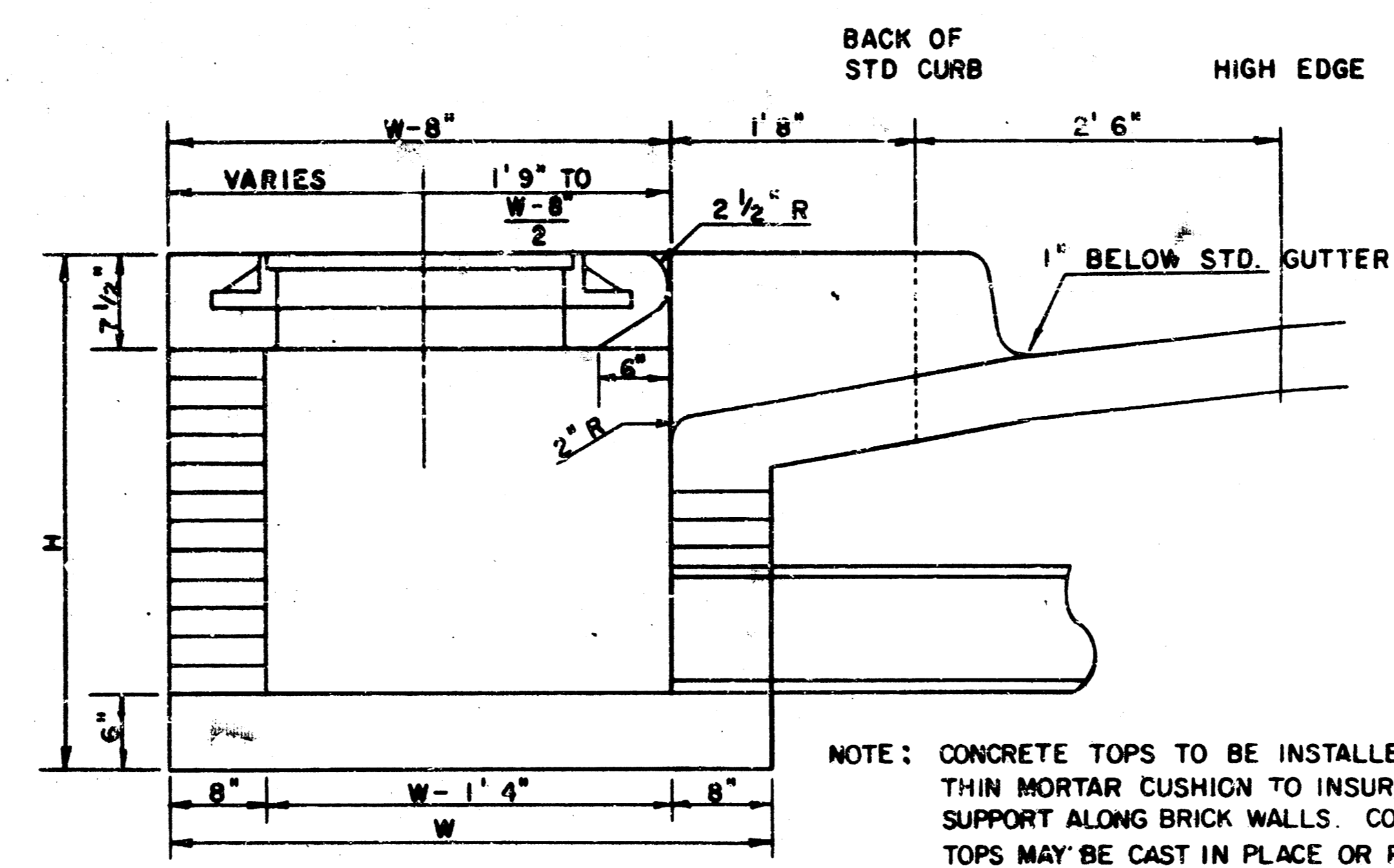
CITY OF WICHITA, KANSAS
DEAN S. SELLERS, CITY ENGINEER
LINE 1 & 2
STORM WATER SEWER 156 (PHASE 1)
PROJ. NO. 488-76-245-8025-000-001

PROFESSIONAL ENGINEERING CONSULTANTS, P.A.
ENGINEERS
WICHITA, KANSAS
Designed by **DD/CSB**
Drawn by **CSB**
Job No. **70101**
Date **October 1992**

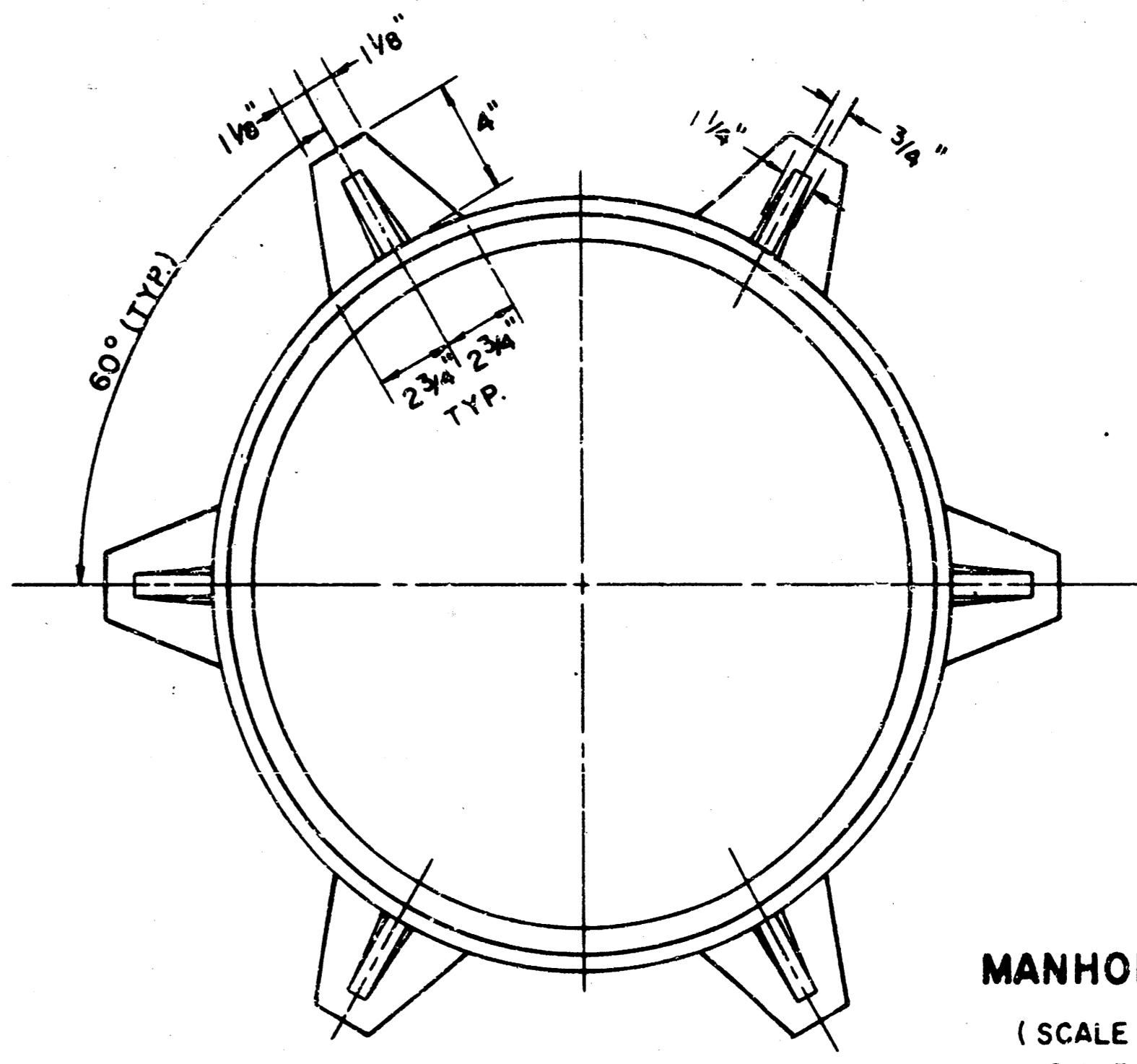




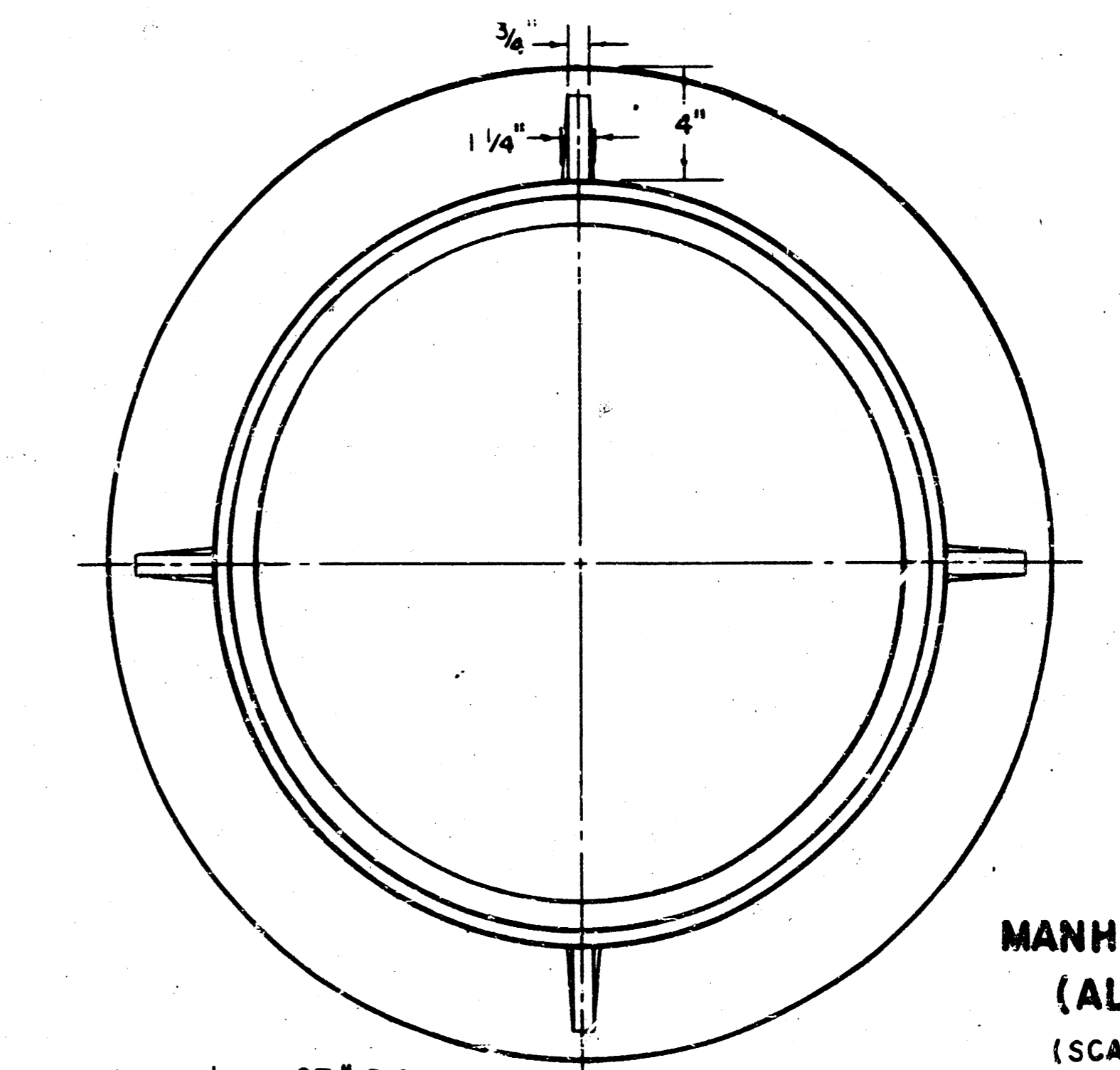
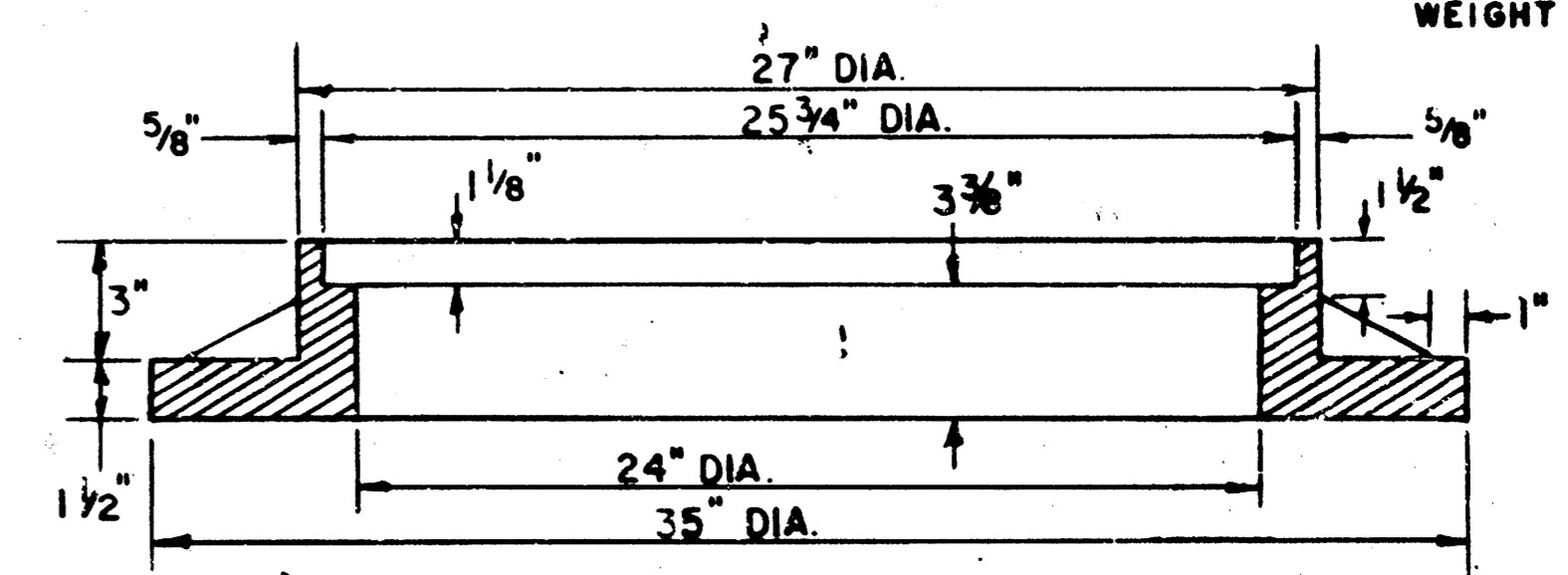
PLAN (SCALE 1" = 1'0")



SECTION A-A (SCALE 1" = 1'0")



MANHOLE FRAME (SCALE 1" = 6") WEIGHT = 180 LBS.



MANHOLE FRAME (ALTERNATE) (SCALE 1" = 6") WEIGHT = 180 LBS.

NOTE: b₃ bar to be field bent to clear manhole frame.

TRANSITION CURB TO MATCH INSIDE OF INLET WALL THROUGHOUT

DO NOT BEVEL INLET TOP THIS 5" AT EACH END

NOTE: CONCRETE TOPS TO BE INSTALLED ON THIN MORTAR CUSHION TO INSURE FULL SUPPORT ALONG BRICK WALLS. CONCRETE TOPS MAY BE CAST IN PLACE OR PRECAST. CONCRETE FOR INLET TOPS AND FLOORS SHALL BE 6-SACK PAVING MIX.

STEEL SCHEDULE

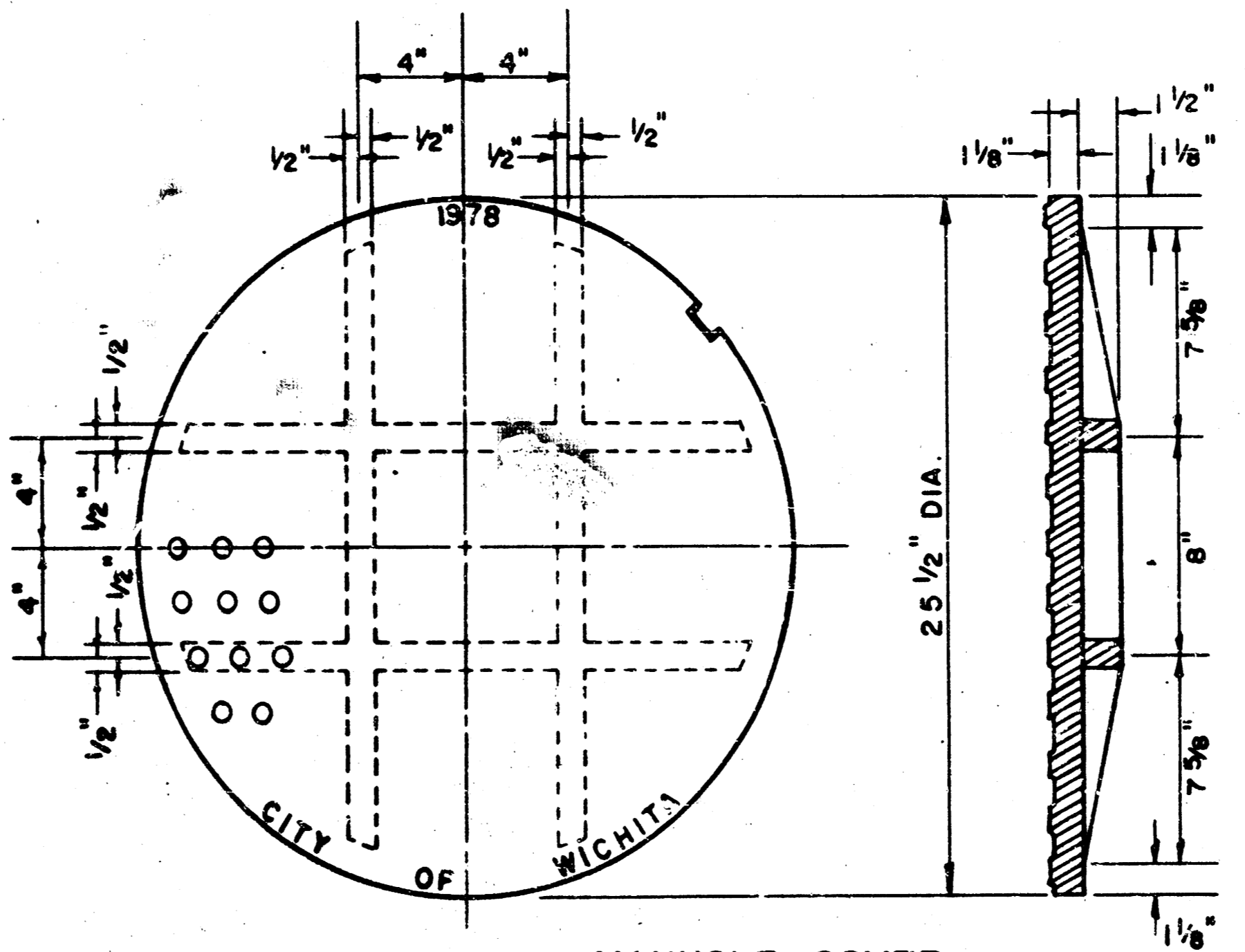
BAR NUMBER	a ₁	a ₂	b ₁	b ₂	b ₃	b ₄	WT. LBS.
1	8	2	1	3	5	7	9
2	4	4	4	4	4	4	4
3	4	4	4	4	4	4	4
4	4	4	4	4	4	4	4
5	4	4	4	4	4	4	4
6	4	4	4	4	4	4	4
7	4	4	4	4	4	4	4
8	4	4	4	4	4	4	4
9	4	4	4	4	4	4	4
10	4	4	4	4	4	4	4
11	4	4	4	4	4	4	4
12	4	4	4	4	4	4	4

* NOTE: a₂ BARS TO BE PLACED APPROX. 2" BELOW TOP OF INLET COVER

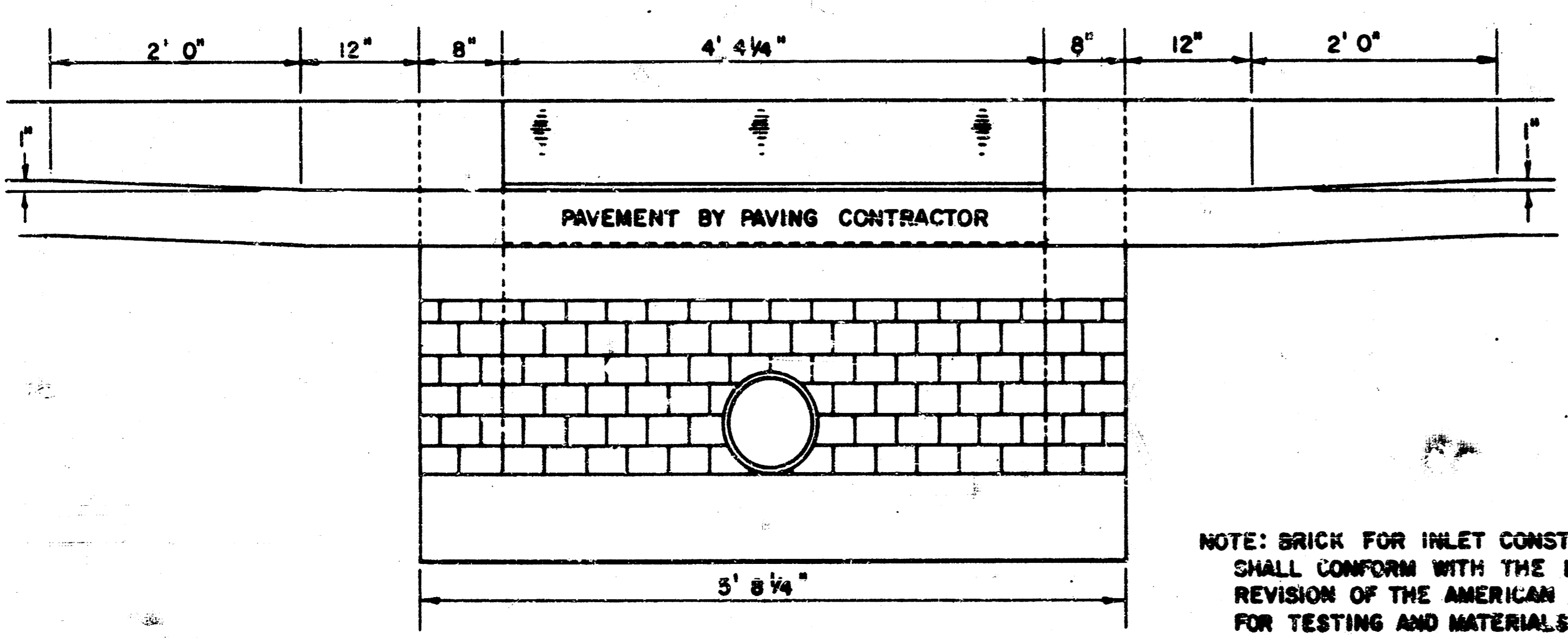
STANDARD CURB INLET PRECAST TOPS

W	PRECAST TOP SIZE	PIPE SIZE	CU. YD. CONC.
4' 2"	36" x 5' 8 1/4" x 7 1/2"	21" @ SMALLER	0.46
5' 0"	44" x 8' 8 1/4" x 7 1/2"	24" @ 30"	0.57
6' 0"	54" x 8' 8 1/4" x 7 1/2"	30" @ 42"	0.71
7' 0"	64" x 5' 8 1/4" x 7 1/2"	48" @ 54"	0.84
8' 0"	74" x 5' 8 1/4" x 7 1/2"	60" @ 66"	0.97

* SHOWS VOLUME

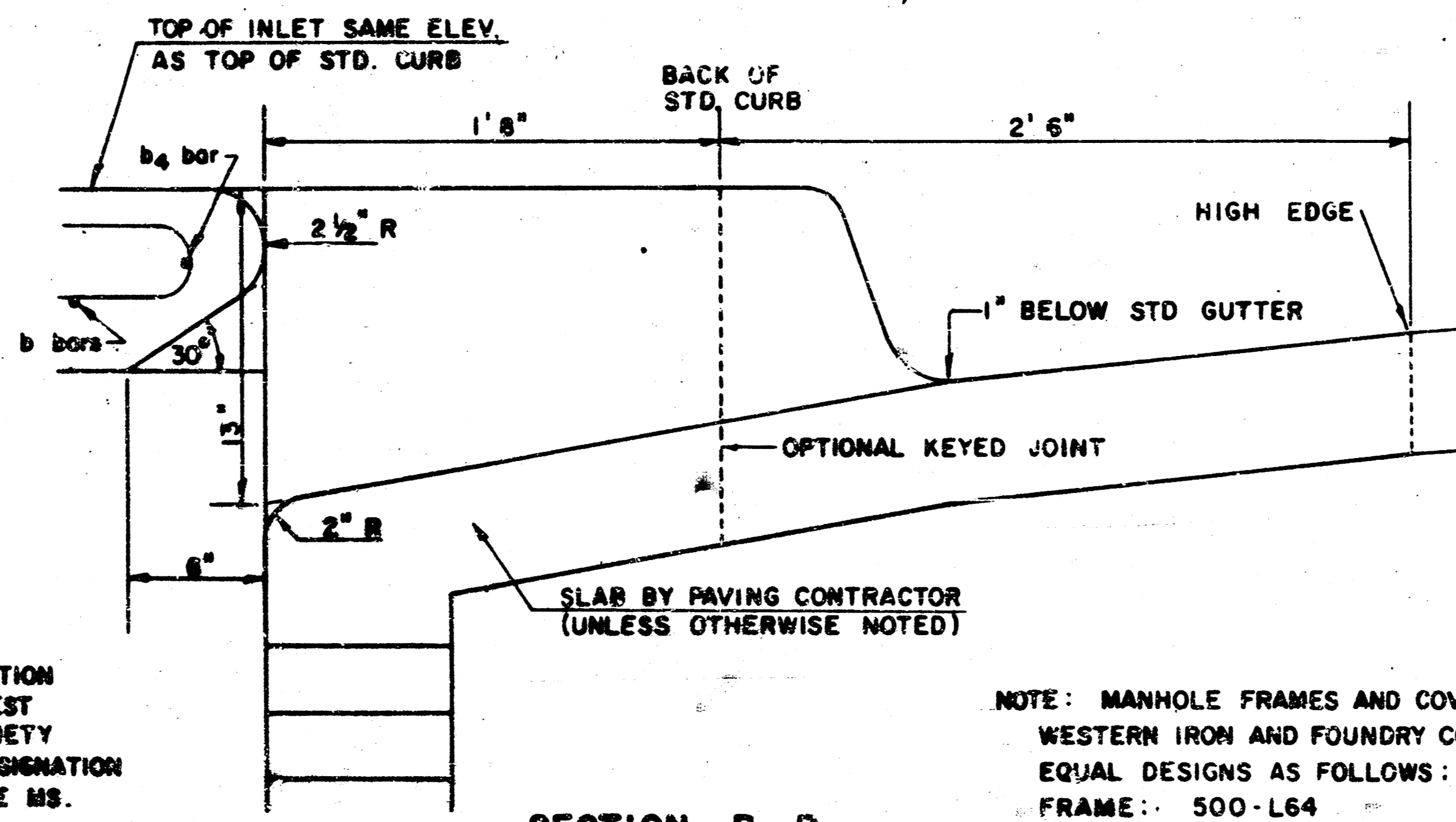


MANHOLE COVER (SCALE 1" = 6") WEIGHT = 170 LBS.



SECTION C-C (SCALE 1" = 1'0")

NOTE: BRICK FOR INLET CONSTRUCTION SHALL CONFORM WITH THE LATEST REVISION OF THE AMERICAN SOCIETY FOR TESTING AND MATERIALS DESIGNATION C-32 FOR MANHOLE BRICK GRADE MS.



SECTION B-B (SCALE 1" = 6")

NOTE: MANHOLE FRAMES AND COVER ARE WESTERN IRON AND FOUNDRY CO. INC. OR EQUAL DESIGNS AS FOLLOWS:
 FRAME: 500-L64
 FRAME (ALTERNATE): 500 A4
 COVER: 222 S4 "NOBBY"

DETAIL STANDARD TYPE IA CURB INLET
 CITY OF WICHITA, KANSAS
 DEAN S. SELLERS-- CITY ENGINEER
 OCTOBER 1978
 Sheet 3 of 3

STORM WATER SEWER NO. 156 (PHASE I)
 PROJ. NO. 468-76-245-80725-C00-000-001

FILMED FROM THE BEST AVAILABLE COPY...