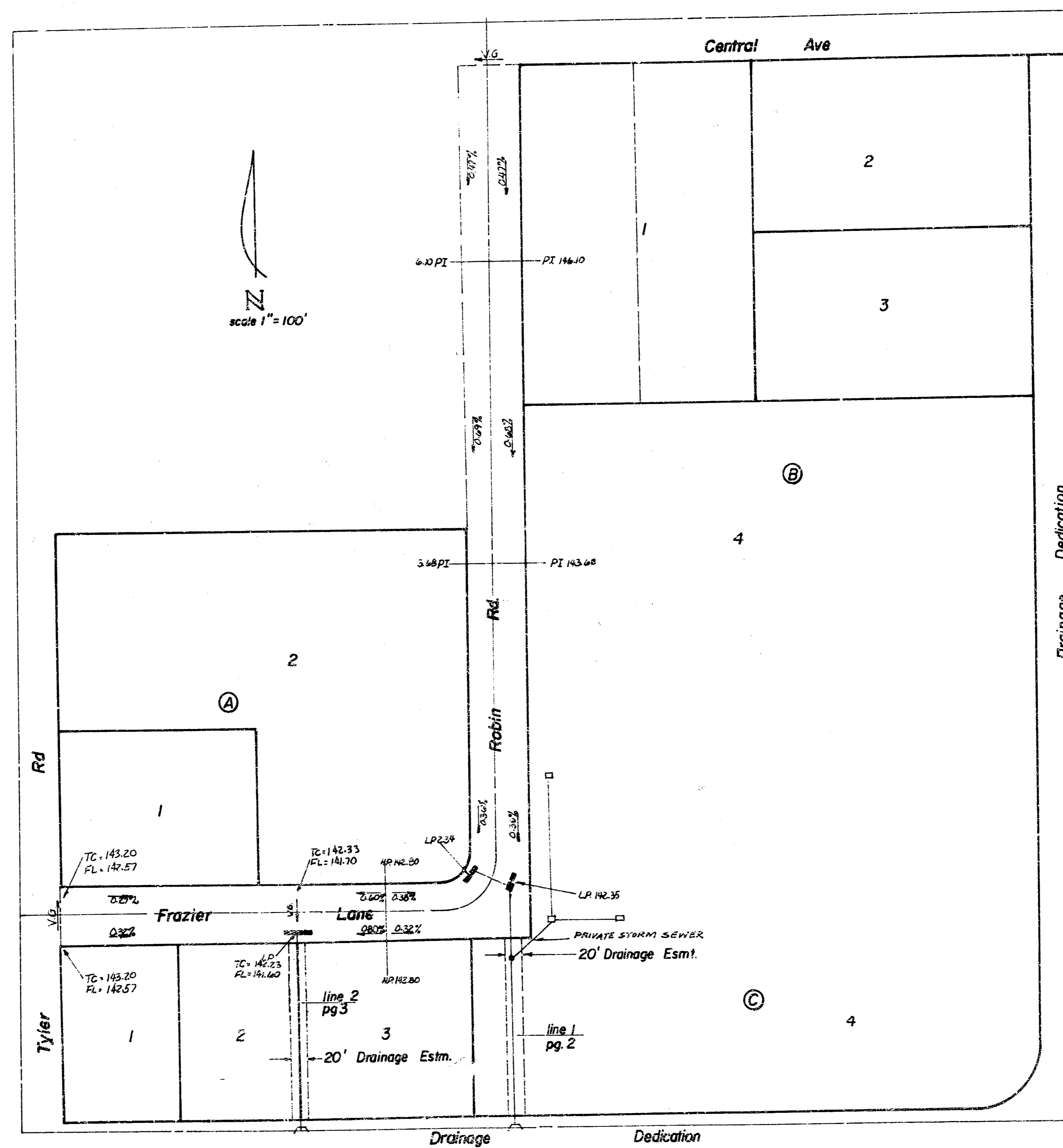


# Storm Water Sewer 162

Ty-Cen Addition

**NOTES**

1. CONTRACTOR SHALL COORDINATE WORK WITH PAVING CONTRACTORS, AND CONTACT RELEVANT UTILITY COMPANIES AND OTHER AGENCIES INVOLVED IN THIS PROJECT SITE DEVELOPMENT.
2. FIELD ENGINEER SHALL TAKE TIES ON ALL IRONS AND THIMBLES IN THE PROJECT AREA PRIOR TO CONSTRUCTION. FIELD ENGINEER SHALL REPLACE ALL SUCH IRONS AND THIMBLES DISTURBED DURING CONSTRUCTION.
3. THE CURB INLETS LOCATION AS NOTED ON THIS PLAN MAY VARY FROM PROPOSED PAVING PLANS. THE FIELD ENGINEER SHALL LOCATE CURB INLETS WITH REFERENCE TO PROPOSED PAVING PLANS OF THE PERTINENT STREETS.
4. CONTRACTOR HAS THE OPTION TO INSTALL PRE-CAST TYPE I-A CURB INLETS IN LIEU OF THE BRICK TYPE CONSTRUCTION; SEE STANDARD DETAIL PRE-CAST TYPE I-A INLET DATED AUGUST, 1979.
5. END SECTION AT PIPE OUTFALL SHALL BE CONSTRUCTED TO ALIGN WITH THE SLOPE OF THE BANKS IN ORDER THAT THE WALL PROTRUSION IS MINIMUM. WHERE SUCH PROTRUSION CANNOT BE AVOIDED, FILL AROUND THE WALL AT APPROXIMATELY 5:1 SIDE SLOPES SO END SECTION APPEARS ENTIRELY RECESSED.
6. ALL CONCRETE SHALL BE "6-SACK CONCRETE" UNLESS OTHERWISE NOTED.



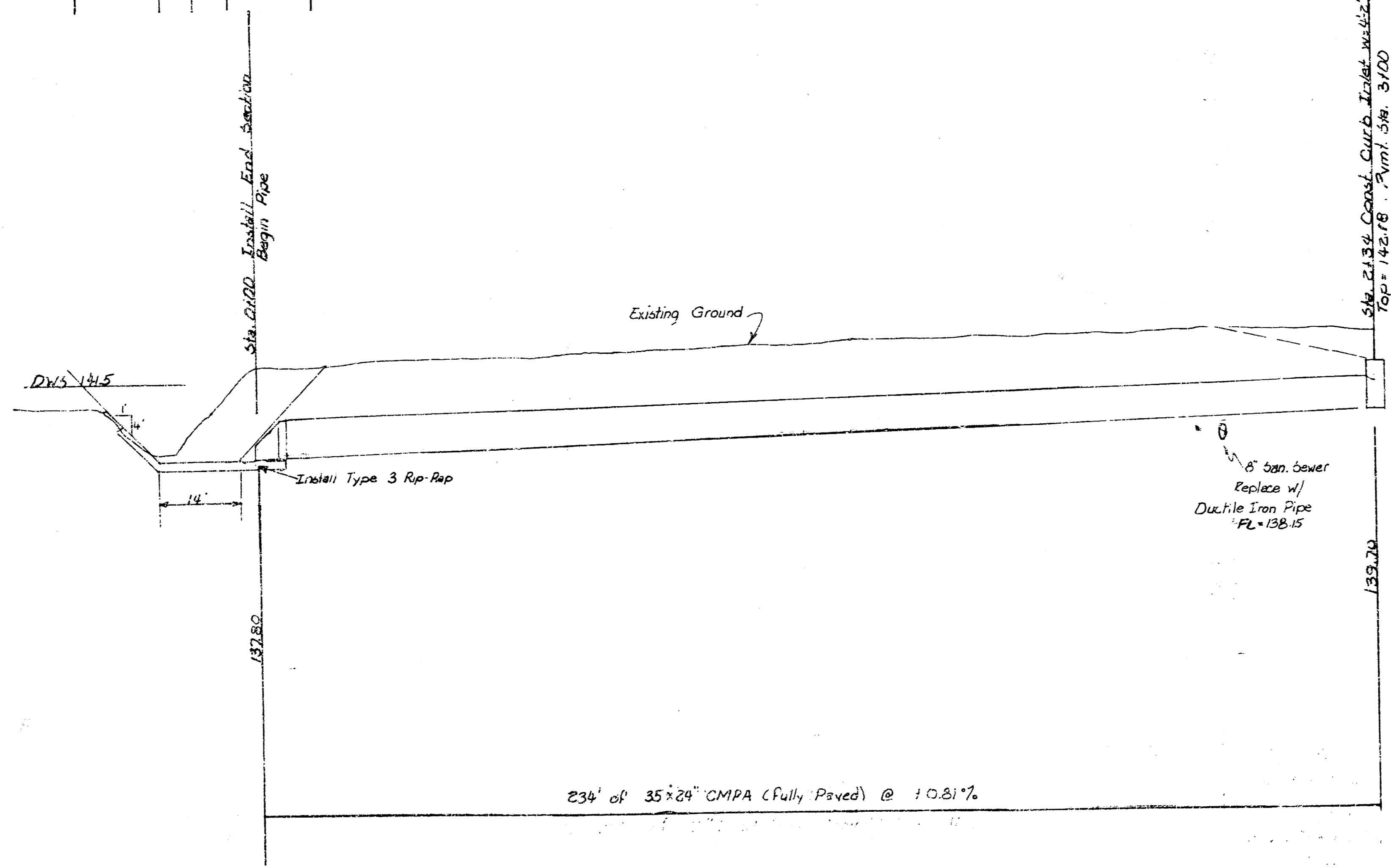
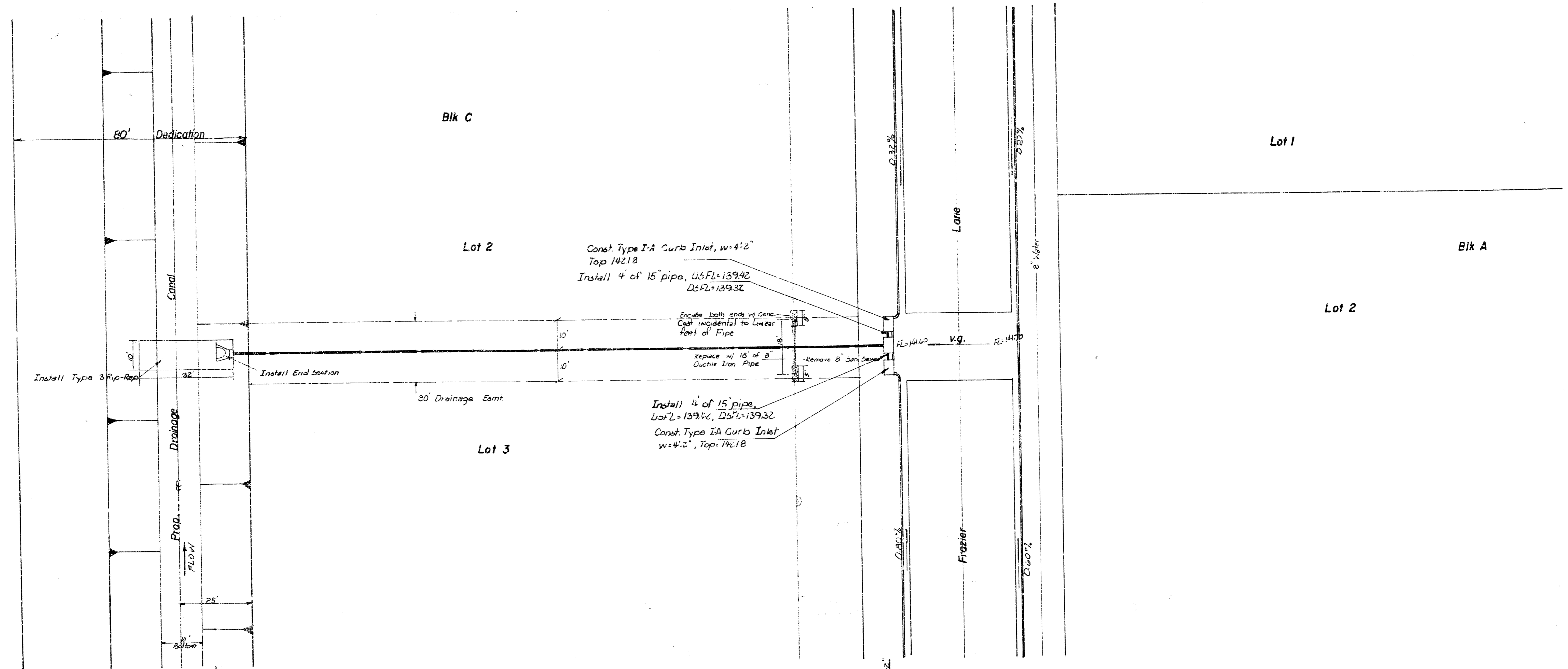
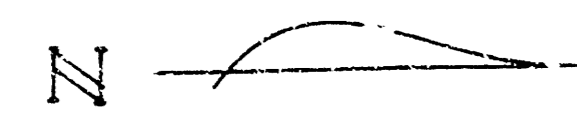
**Table of Contents**

Title Sheet	page 1
Plan and Profile	2,3
Detail, Special Manhole	4
" , Type IA Curb Inlet	5
" , Sewer Appurtenances	6

City of Wichita, Kansas  
 Dean Sellers, Acting City Engineer  
 Proj. no. 468-76-245-80759-000-000-001  
 Date \_\_\_\_\_





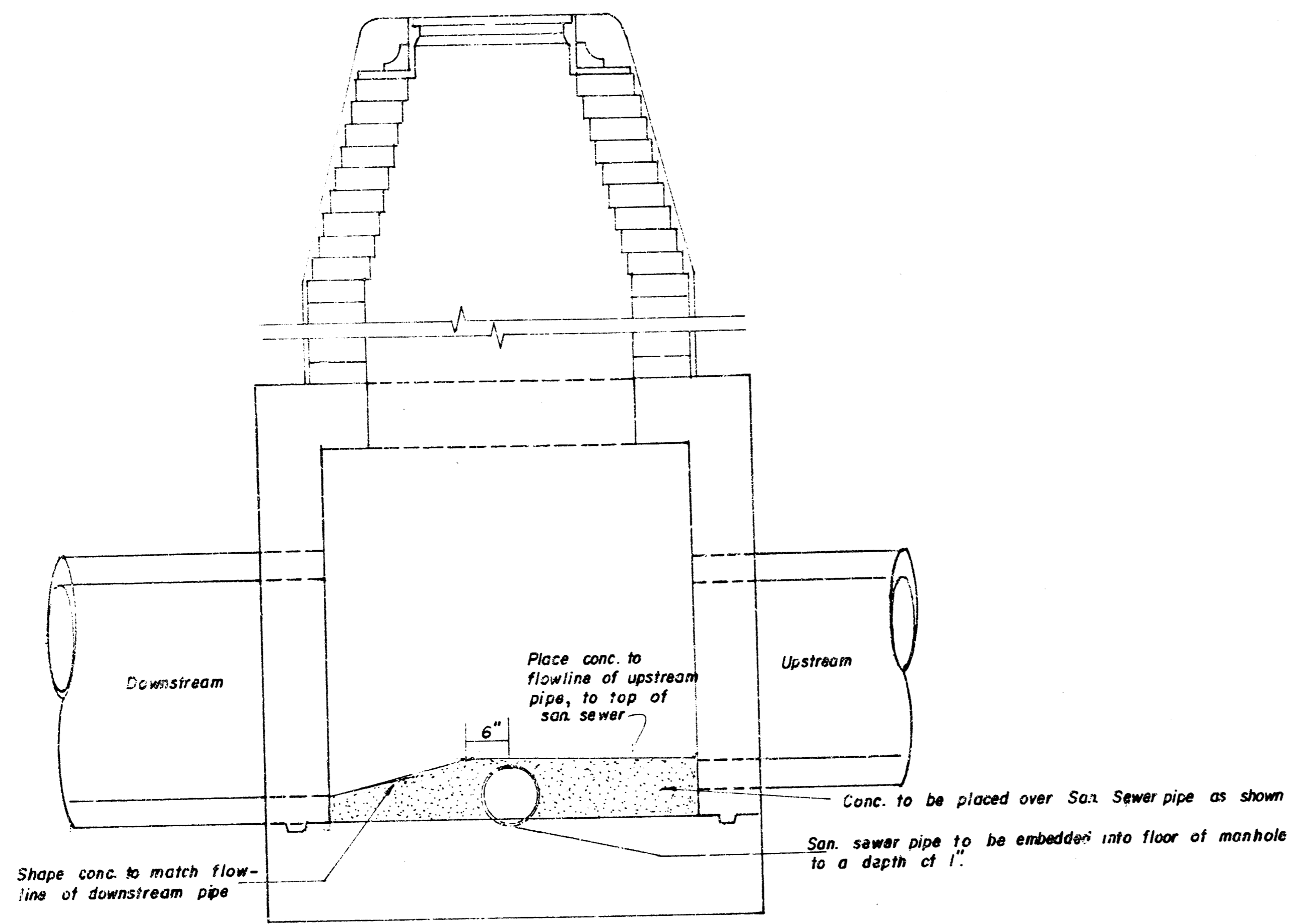


145  
140  
135

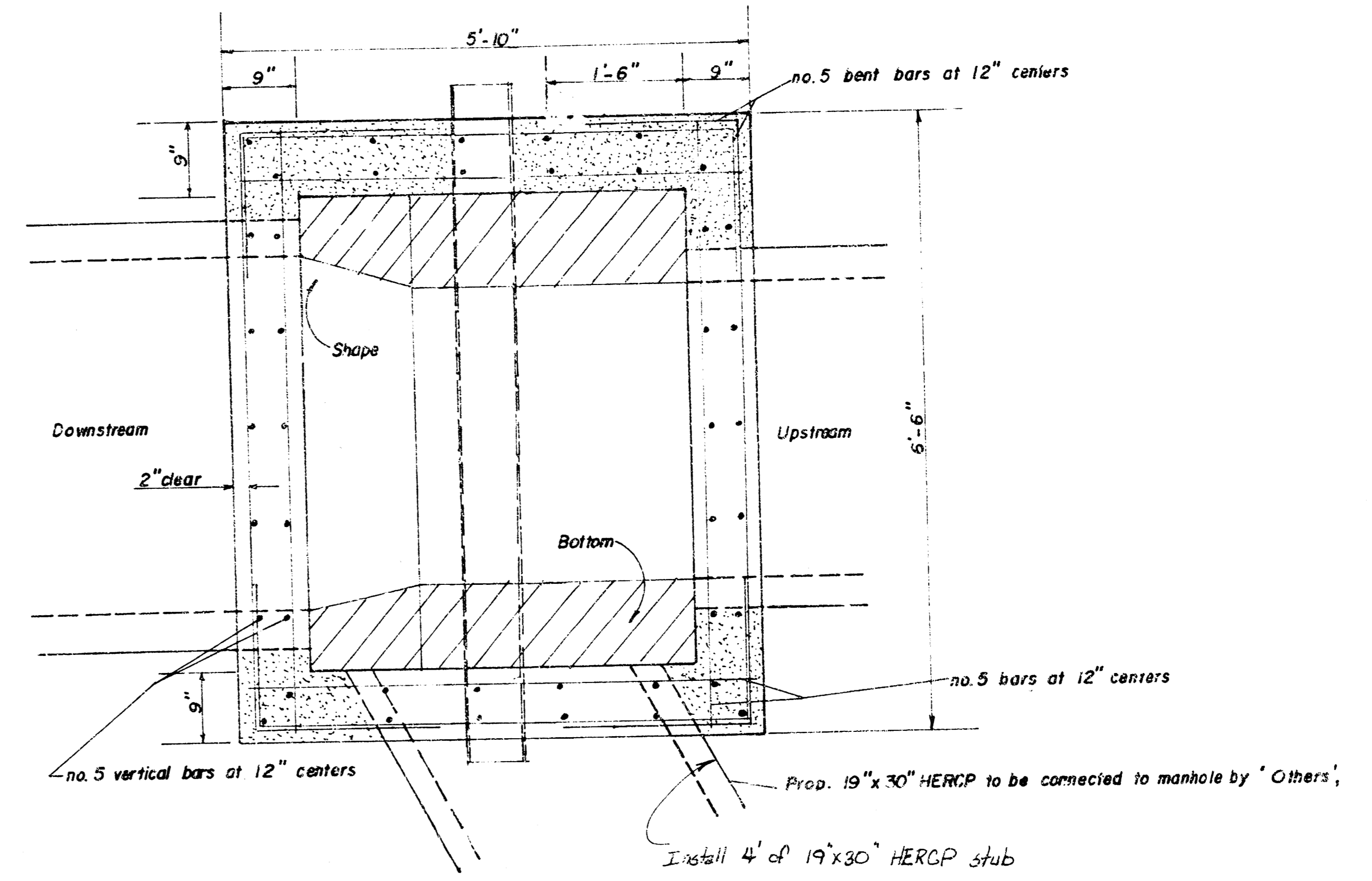
145  
140  
135

SWS162 TY-CEN  
line 2

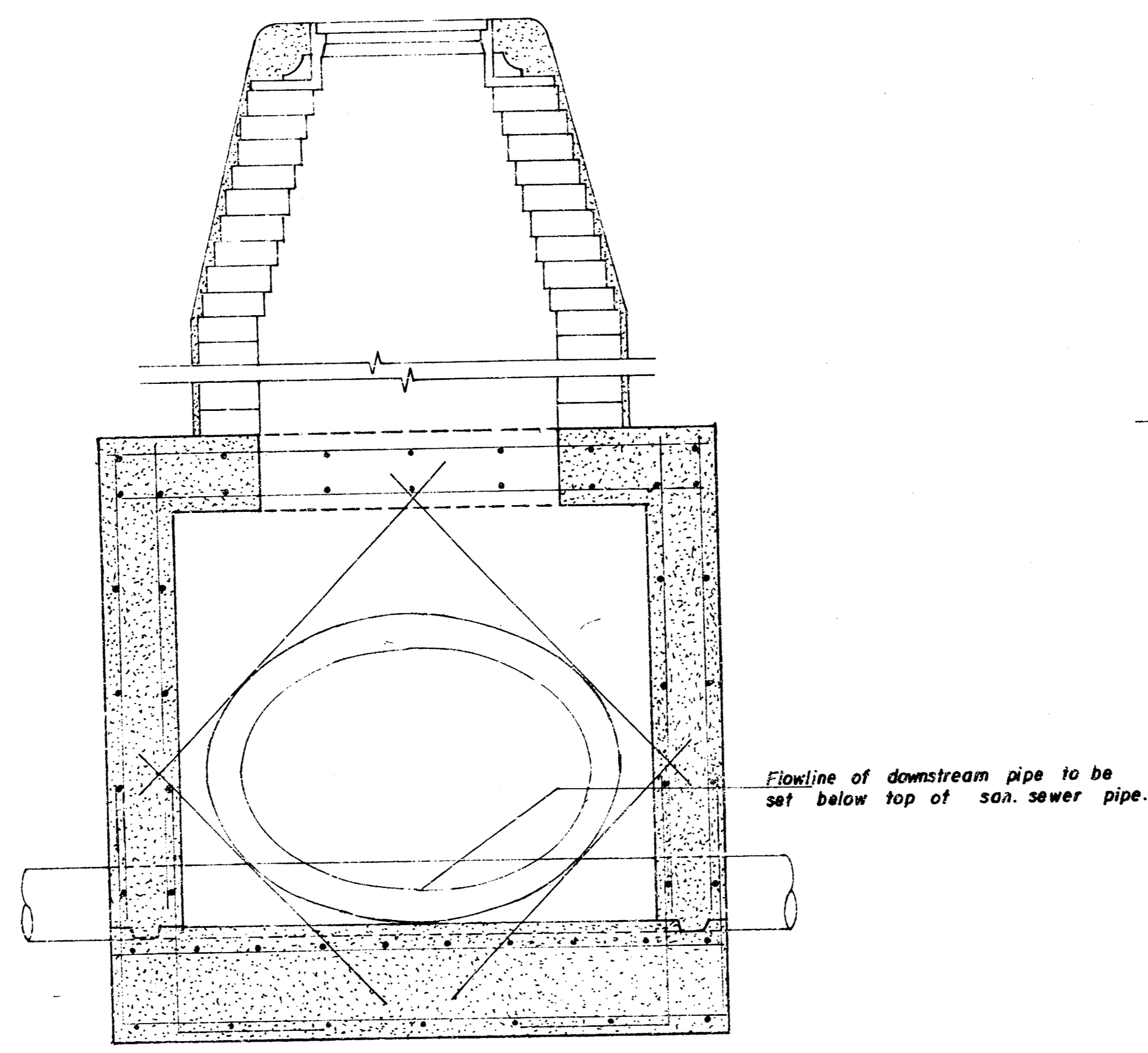
FILMED FROM THE BEST  
AVAILABLE COPY.....



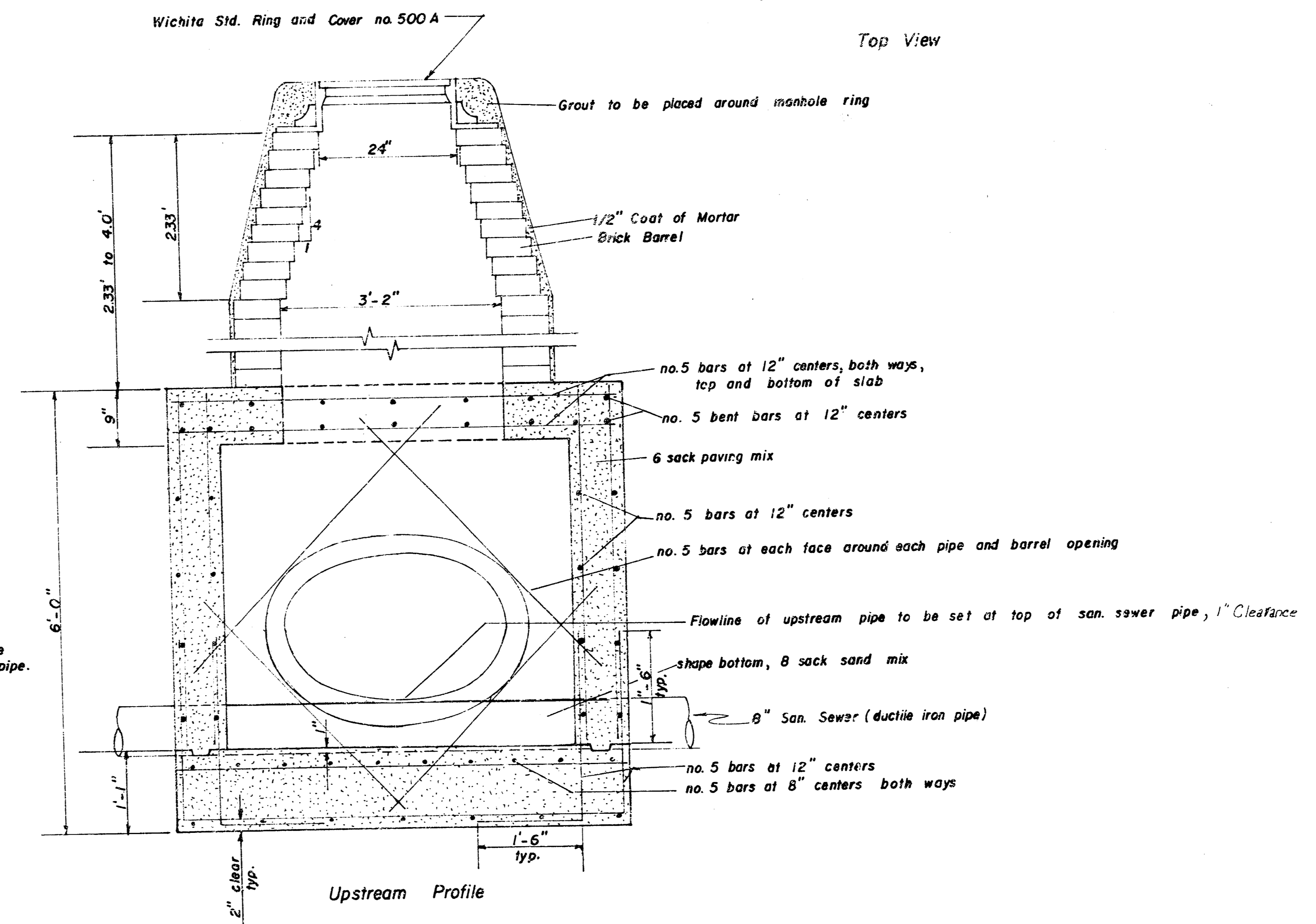
Side View



Top View



Downstream Profile



Special Reinforced Concrete Manhole

Scale  $\frac{3}{4}'' = 1'-0''$

FILMED FROM THE BEST AVAILABLE COPY .....