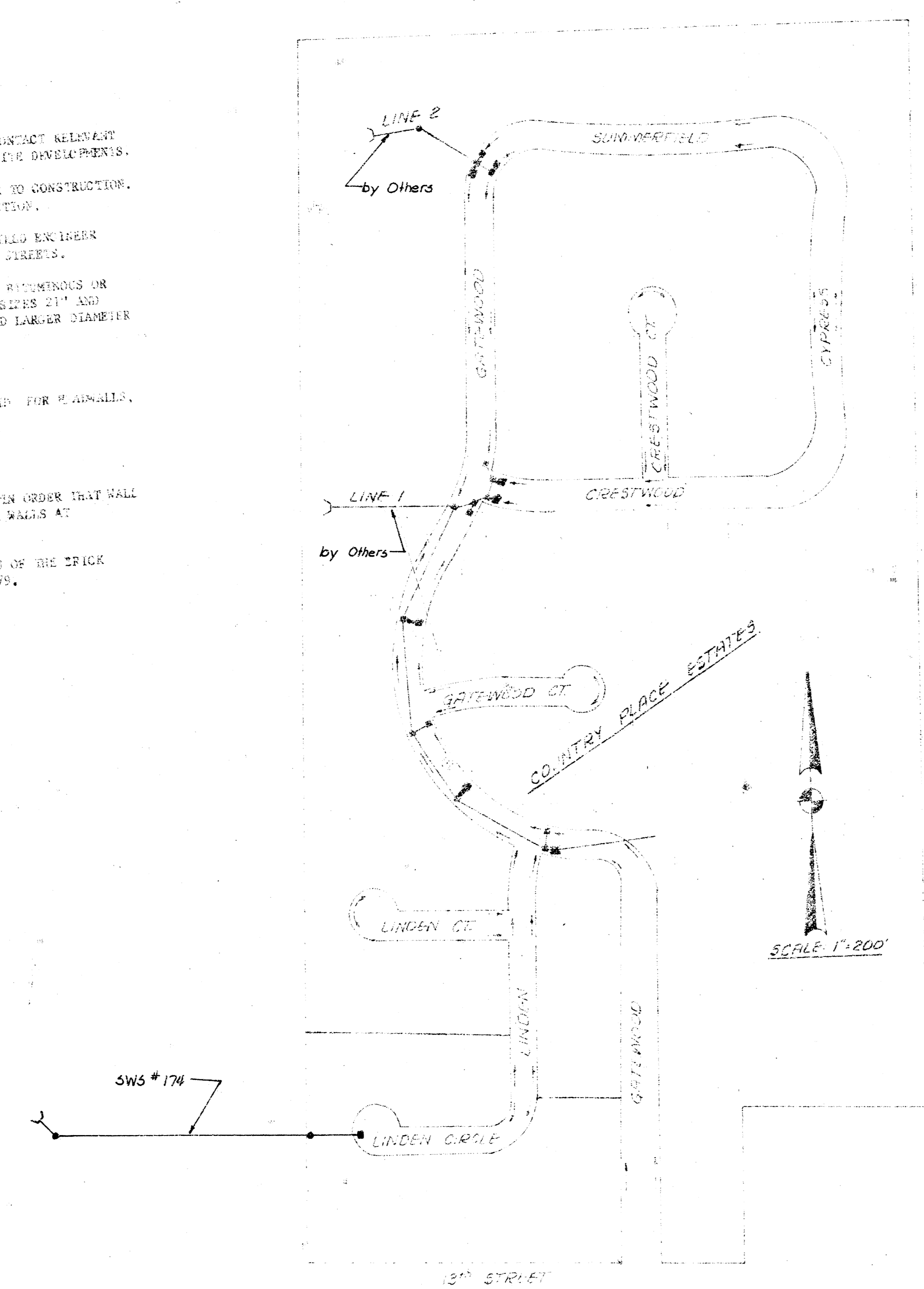


STORM WATER SEWER NO. 174

7. REPAIRS AT PIPE OUTFALL SHALL BE CONSTRUCTED TO ALLOW FOR THE SLOPE OF LAWS IN ORDER THAT WALL PROTRUSION IS MINIMUM. WHERE SUCH PROTRUSION CANNOT BE AVOIDED, FILL AROUND THE WALLS AT APPROXIMATELY 75% SLOPE SO DRAINAGE AVOIDS EXCESSIVE.
8. CONTRACTOR SHALL HAVE THE OPTION TO INSTALL FORCAST TYPE 1-A CURB INLET IN LINE OF THE TRICK TYPE CONSTRUCTION; THE STANDARD DETAIL THE LAST TYPE 1-A INLET DATED AUGUST, 1979.

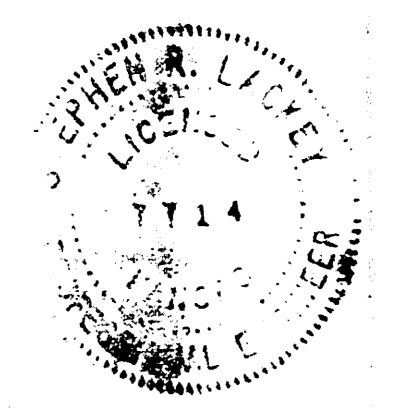


Index
 Cover Sheet — page 1
 Plan and Profile — 2,3

DEAN SELLERS, ACTING CITY ENGINEER
 CITY OF WICHITA, KANSAS

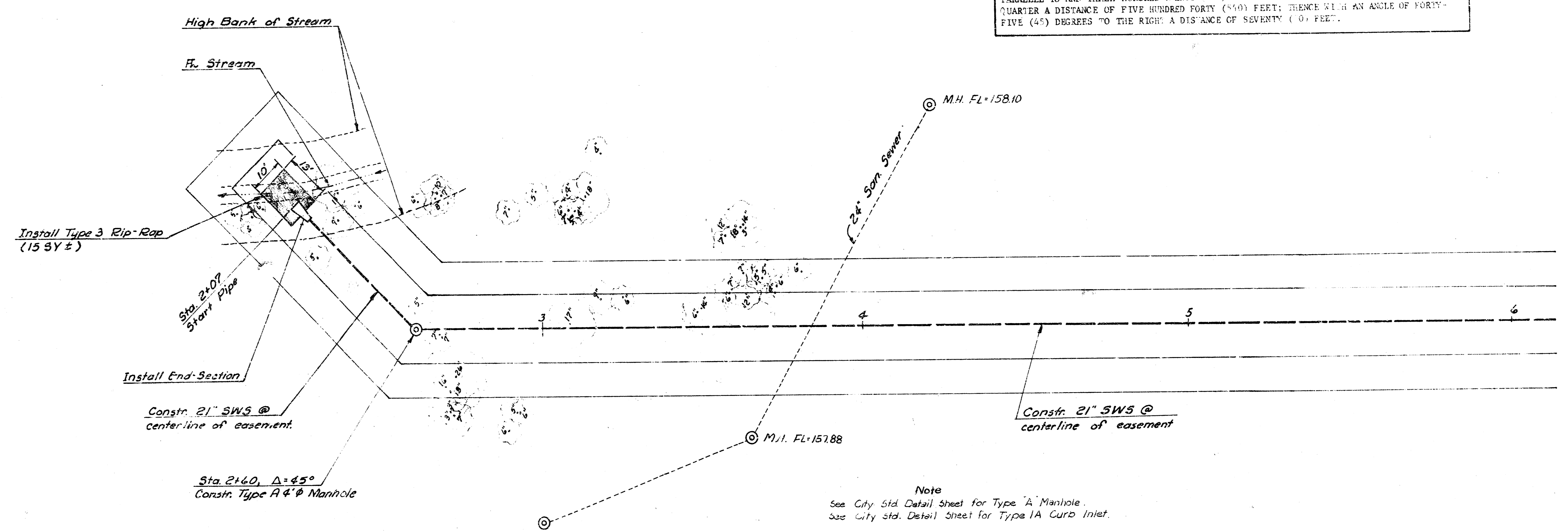
PROJECT NO. 468-76-245-80874 000-000-001

DATE: _____



PLN 353
ROR

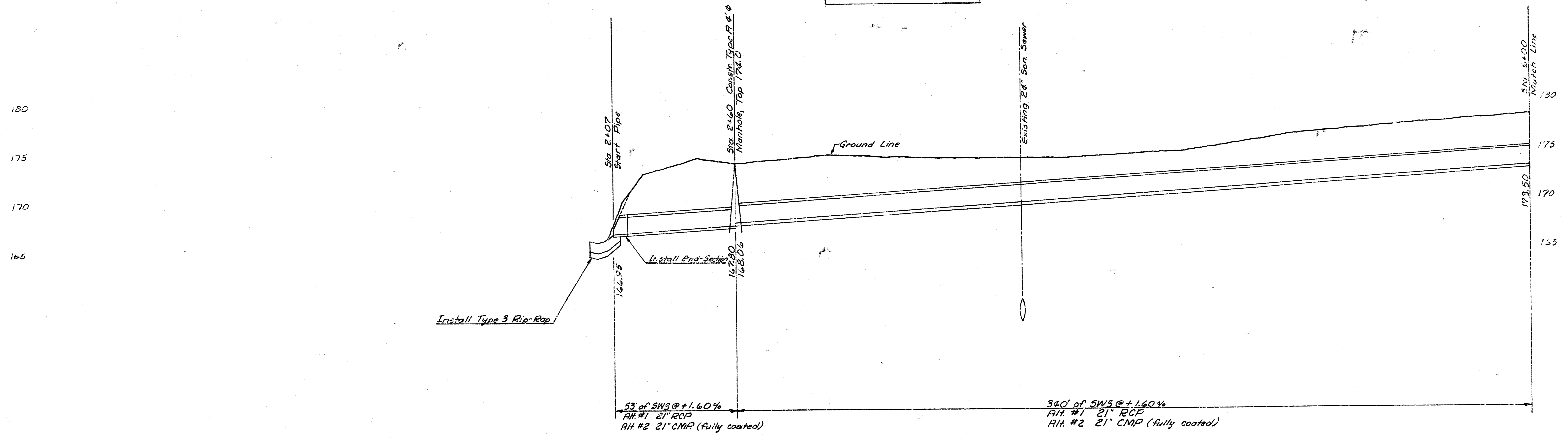
DRAINAGE EASEMENT: 20' WIDE WITH 10' WIDE TEMPORARY CROSS SECTION EASEMENT ON ALL SIDES. ITS CENTERLINE DESCRIBED AS: BEGINNING AT A POINT ON THE EAST LINE OF SOUTH WEST QUARTER, SECTION 8, TOWNSHIP 27 SOUTH, RANGE 1 EAST, SAID RIVER BEING THREE HUNDRED TWENTY (320) FEET NORTH OF SOUTH LINE OF SAID SOUTH WEST QUARTER; THENCE PARALLEL TO AND THREE HUNDRED TWENTY (320) FEET NORTH OF SOUTH LINE OF SAID WEST QUARTER A DISTANCE OF FIVE HUNDRED FORTY (540) FEET; THENCE WITH AN ANGLE OF FORTY-FIVE (45) DEGREES TO THE RIGHT A DISTANCE OF SEVENTY (70) FEET.



Note
See City Std. Detail Sheet for Type 'A' Manhole
See City Std. Detail Sheet for Type 'A' Curio Inlet

REMOVE TREES ONLY IF NORMAL TRENCHING METHODS CANNOT BE CONTINUED.

For Bench Mark See Pg. 3



53' of SWS @ +1.60%
R.H. #1 21" RCP
R.H. #2 21" CMP (fully coated)

340' of SWS @ +1.60%
R.H. #1 21" RCP
R.H. #2 21" CMP (fully coated)

PLAN
S.P. 174

FIGURE

