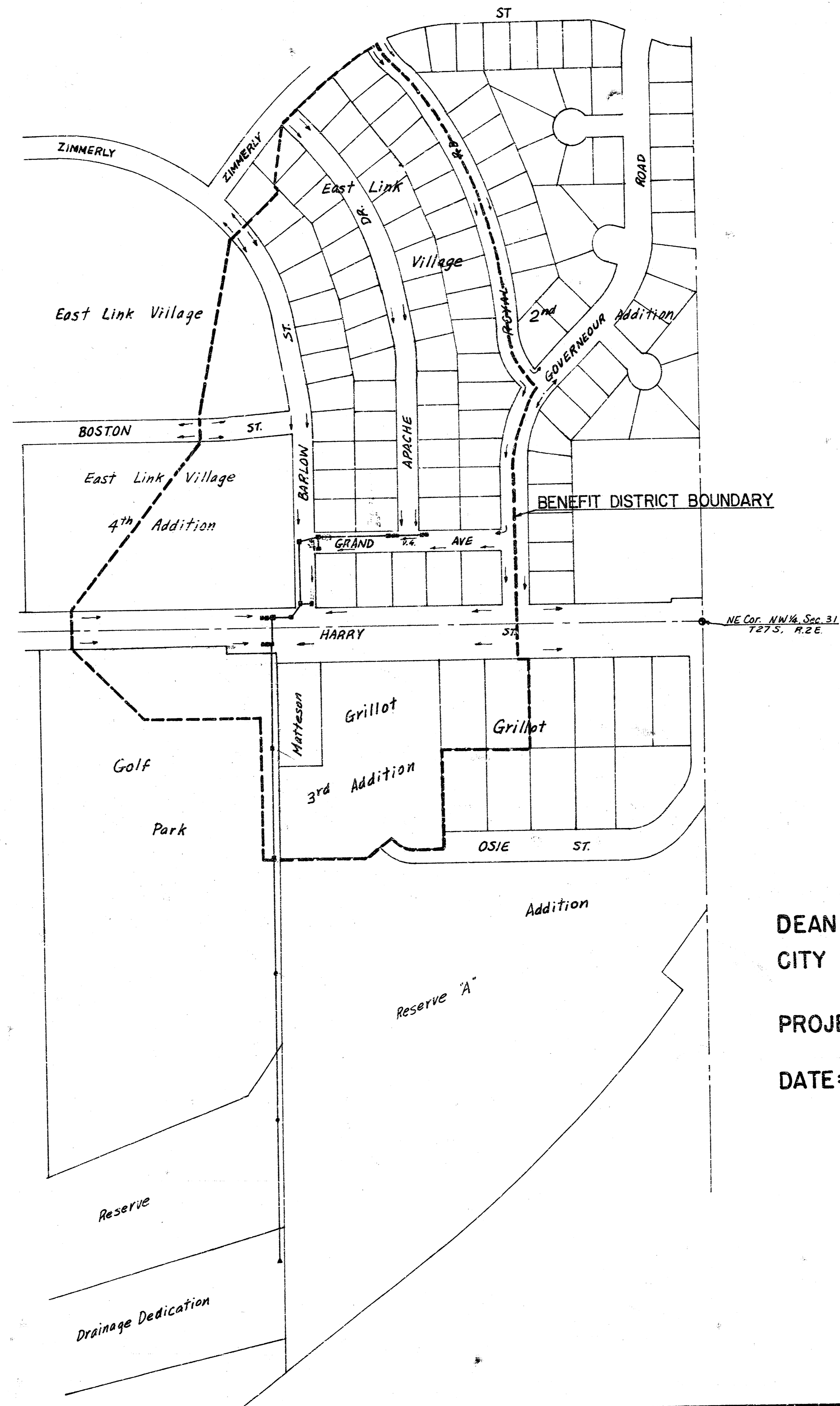


STORM WATER SEWER NO. 175



INDEX	SHEET NO.
COVER SHEET	1
PLAN & PROFILE	2-6
TYPE IA INLET	7
TYPE I INLET	8
ST'D MANHOLE	9
SPECIAL INLET	10

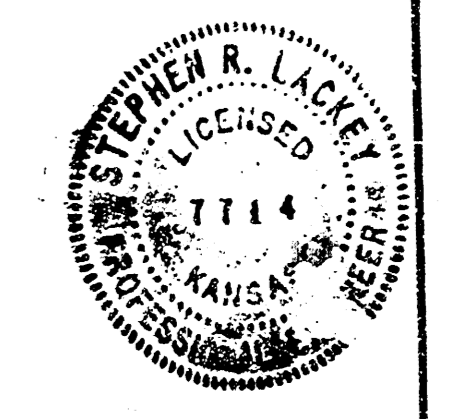
GENERAL NOTES

- 1.) CONTRACTOR SHALL COORDINATE WORK WITH PAVING AND SANITARY CONTRACTORS, AND CONTACT RELEVANT UTILITY COMPANIES AND OTHER AGENCIES INVOLVED WITH THIS PROJECT.
- 2.) FIELD ENGINEER SHALL TAKE TIES TO ALL IRONS AND THIMBLES IN THE PROJECT AREA BEFORE CONSTRUCTION BEGINS. FIELD ENGINEER SHALL REPLACE ALL SUCH IRONS AND THIMBLES DISTURBED DURING CONSTRUCTION.
- 3.) THE TOPS OF INLETS AND MANHOLES AS NOTED ON THE PLANS MAY VARY SO AS TO MEET PROPOSED TOP OF CURB ELEVATIONS OR PAVEMENT ELEVATIONS. THE FIELD ENGINEER SHALL LOCATE INLETS AND MANHOLES WITH REFERENCE TO PROPOSED PAVING PLANS OF THE PERTINENT STREETS.
- 4.) ALL CONCRETE SHALL BE "6-SACK CONCRETE" UNLESS OTHERWISE NOTED.
- 5.) THE CONTRACTOR SHALL AVOID TO REMOVE ANY TREES UNLESS IT IS ABSOLUTELY NECESSARY. CONTRACTOR IS TO TAKE WHATEVER PRECAUTION THE ENGINEER DEEMS NECESSARY (ENCIRLING, SHIELDING, ETC.) TO INSURE THE TREES IN THE VICINITY OF CONSTRUCTION ARE PROTECTED FROM INJURY (COST INCIDENTAL TO PROJECT).
- 6.) CONTRACTOR SHALL AVOID UNCOVERING EXISTING WATERLINES UNLESS ABSOLUTELY NECESSARY. UNCOVERING SHALL BE DONE ONLY IN THE PRESENCE OF A WATER DEPARTMENT ENGINEER.
- 7.) CONTRACTOR SHALL HAVE THE OPTION OF INSTALLING PRE-CAST TYPE IA CURB INLET IN LIEU OF THE BRICK TYPE STRUCTURE. SEE STANDARD DETAIL PRE-CAST TYPE IA CURB INLET DATED AUGUST, 1979.

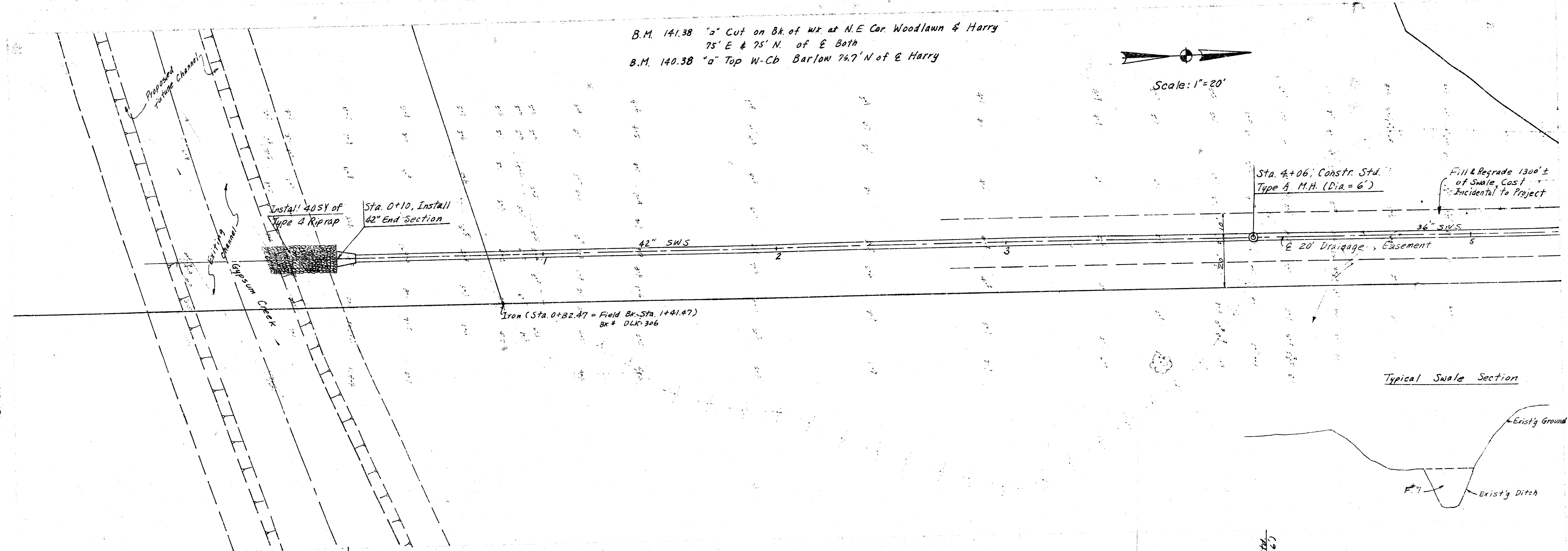
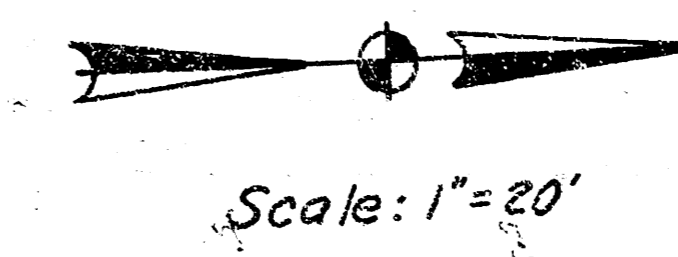
DEAN SELLERS, ACTING CITY ENGINEER
CITY OF WICHITA, KANSAS

PROJECT NO. 468-76-245-80883-000-000-001

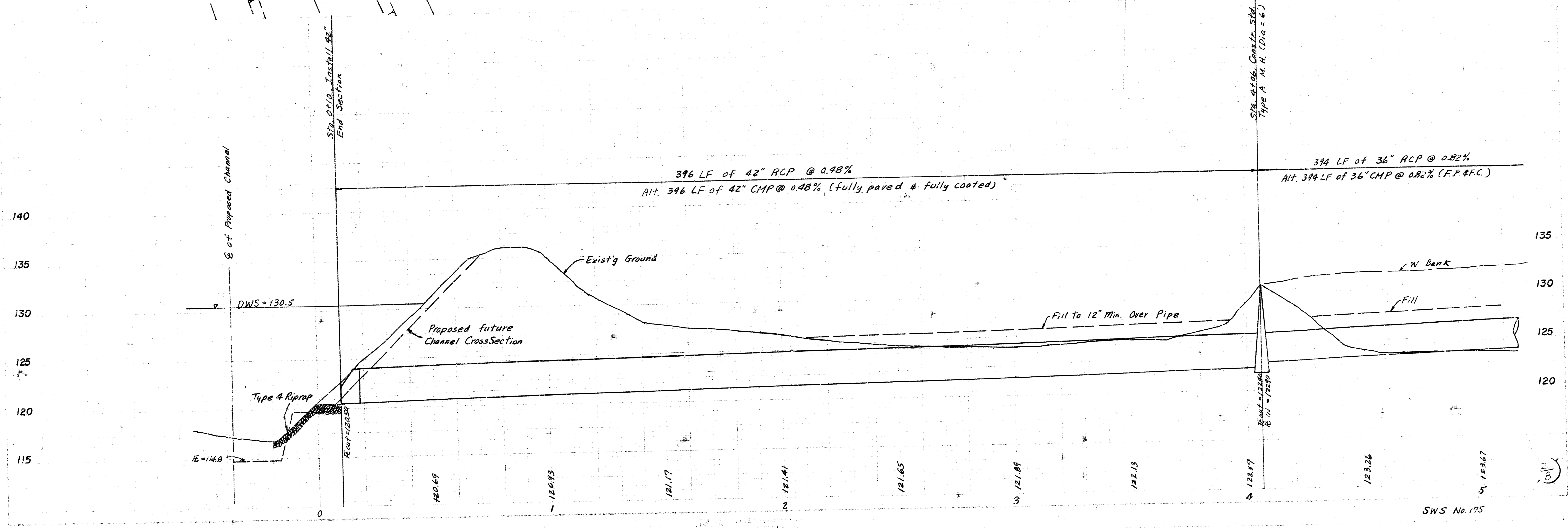
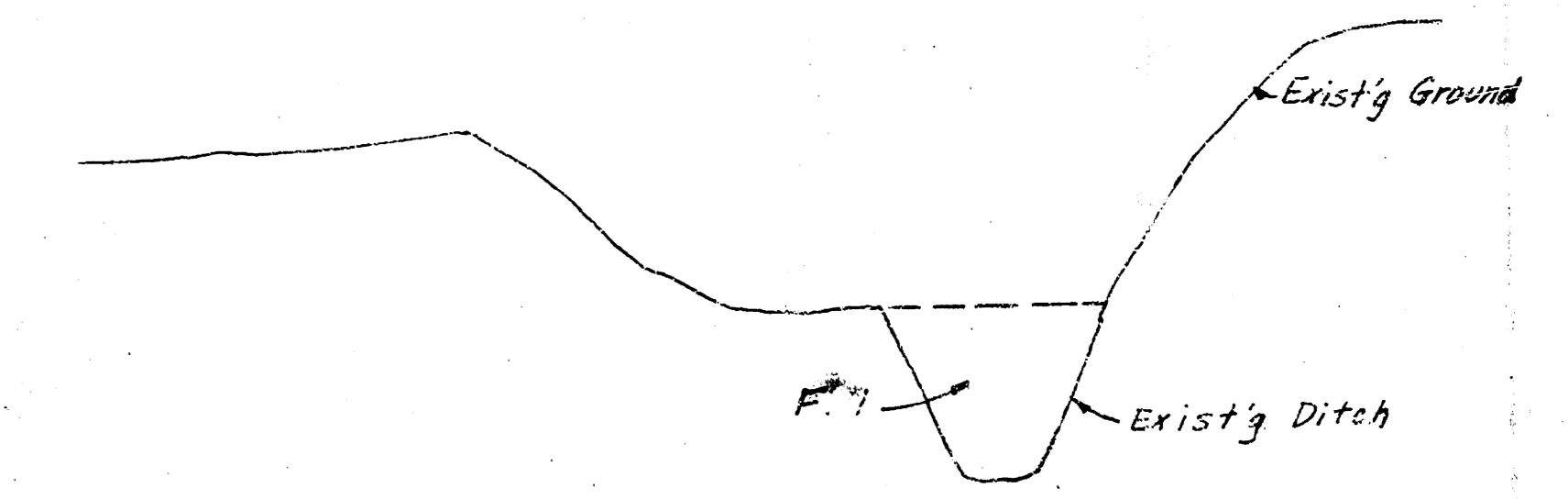
DATE: _____



B.M. 141.38 "a" Cut on Bk of Wx at N.E. Cor. Woodlawn & Harry
 75' E & 75' N. of E Both
 B.M. 140.38 "a" Top W-Cb Barlow 74.7' N of E Harry



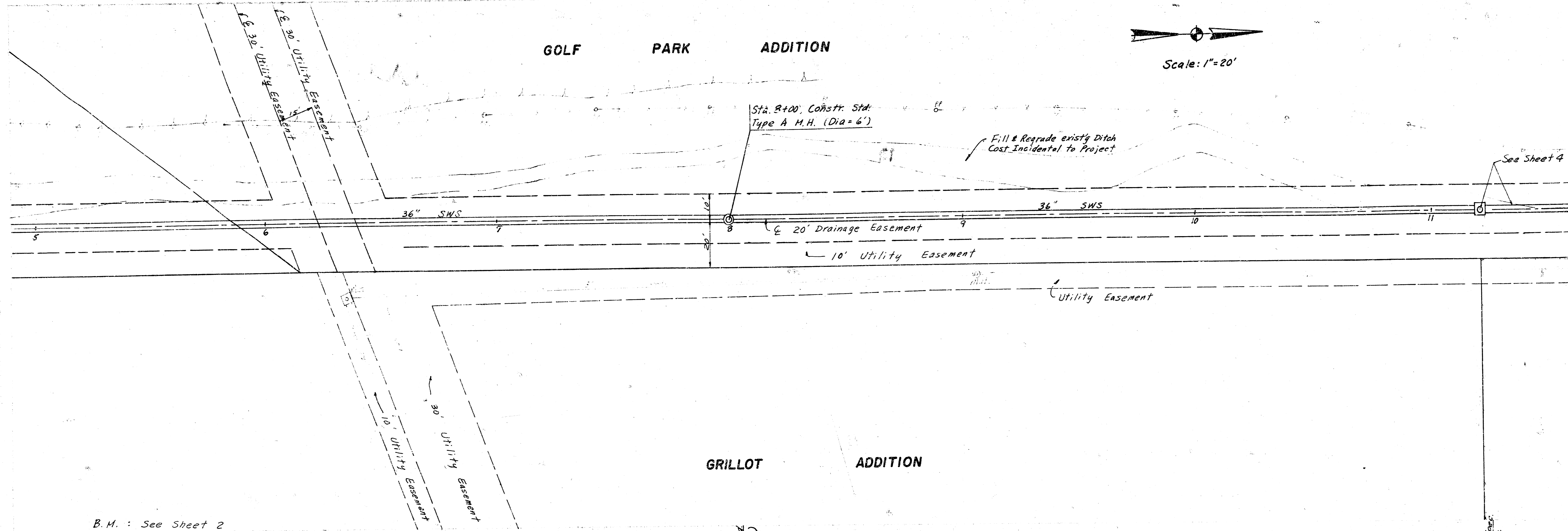
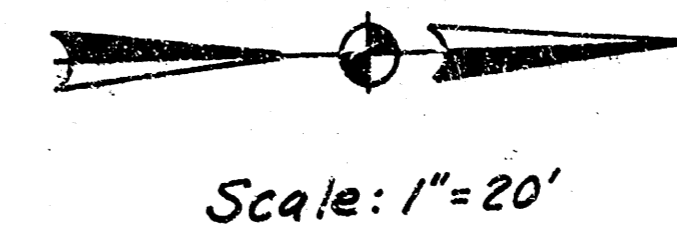
Typical Swale Section



SWS No. 175

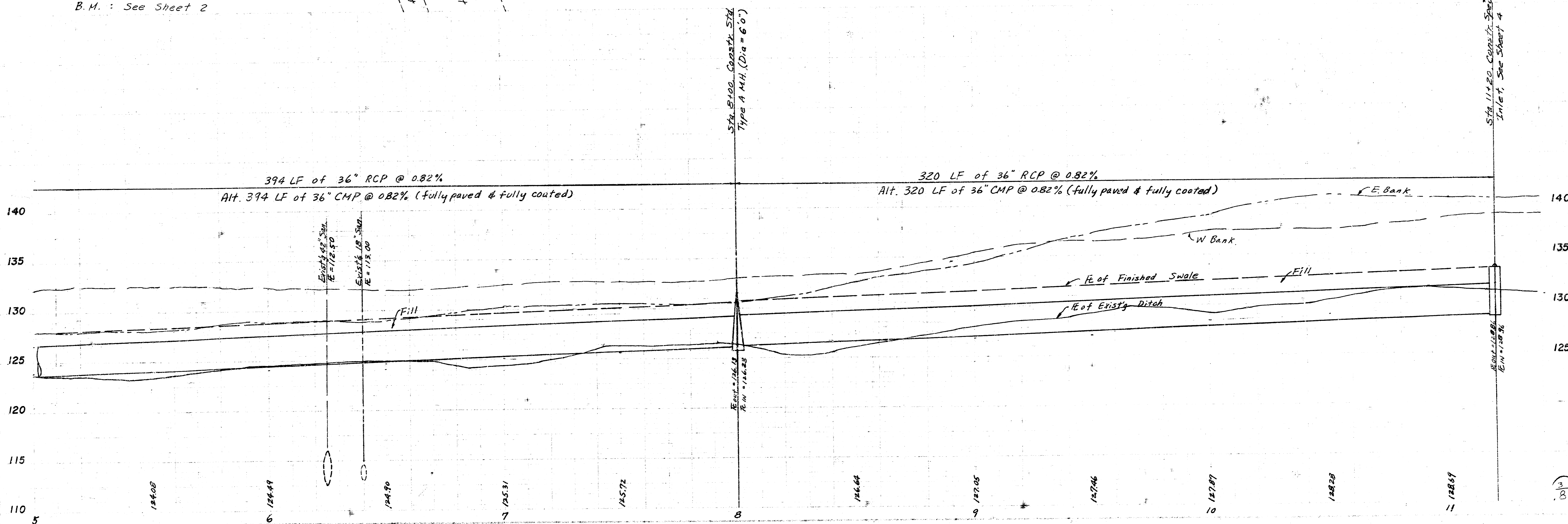
FILMED FROM THE BEST AVAILABLE COPY

GOLF PARK ADDITION



B.M. : See Sheet 2

GRILLOT ADDITION

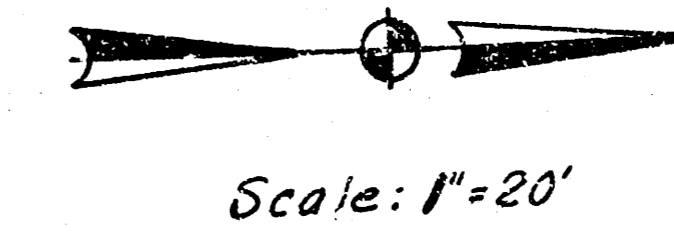


SWS No. 175

FILMED FROM THE BEST AVAILABLE COPY.....

B.M. : See Sheet 2

GOLF PARK ADDITION



Sta. 11+20, Constr. Special Inlet with Beehive Grate, Top = 133.40 See Sheet 10 for Detail

Sta. 14+20, Constr. Special Inlet with Beehive Grate, Top = 135.50 See Sheet 10 for Detail

15+48.8 sp. Inlet

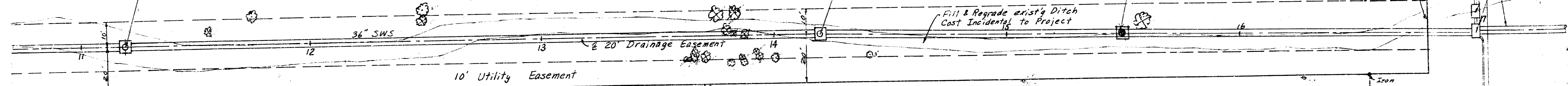
Begin Filling Existing Ditch

Fill & Regrade exist'g Ditch Cost Incidental to Project

See Sheet 5

PCP, PLR PRH

DC D 10-4-1 PLR 306



GRILLOT THIRD ADDITION

MATTESON ADDITION

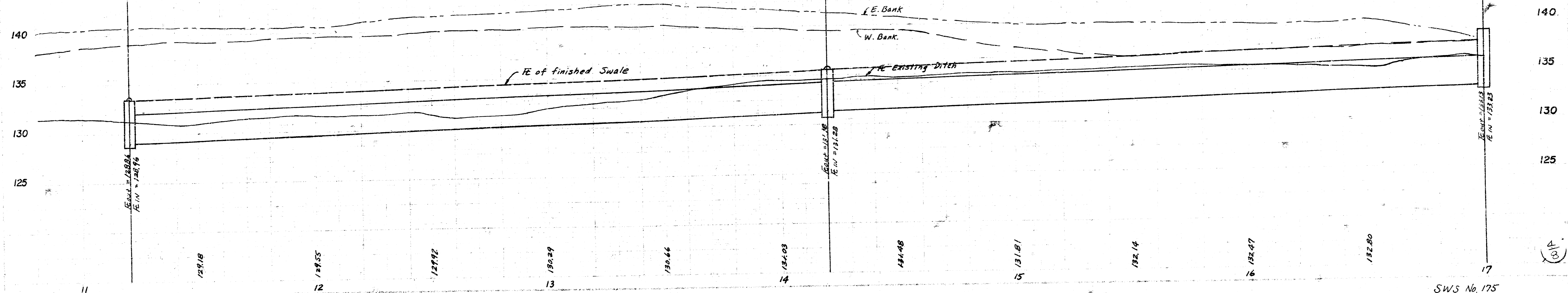
Sta. 11+20, Constr. Special Inlet with Beehive Grate, Top = 133.40, See Sheet 10

Sta. 14+20, Constr. Special Inlet with Beehive Grate, Top = 135.50, See Sheet 10

Sta. 17+14, Club Inlet, See Sheet 5

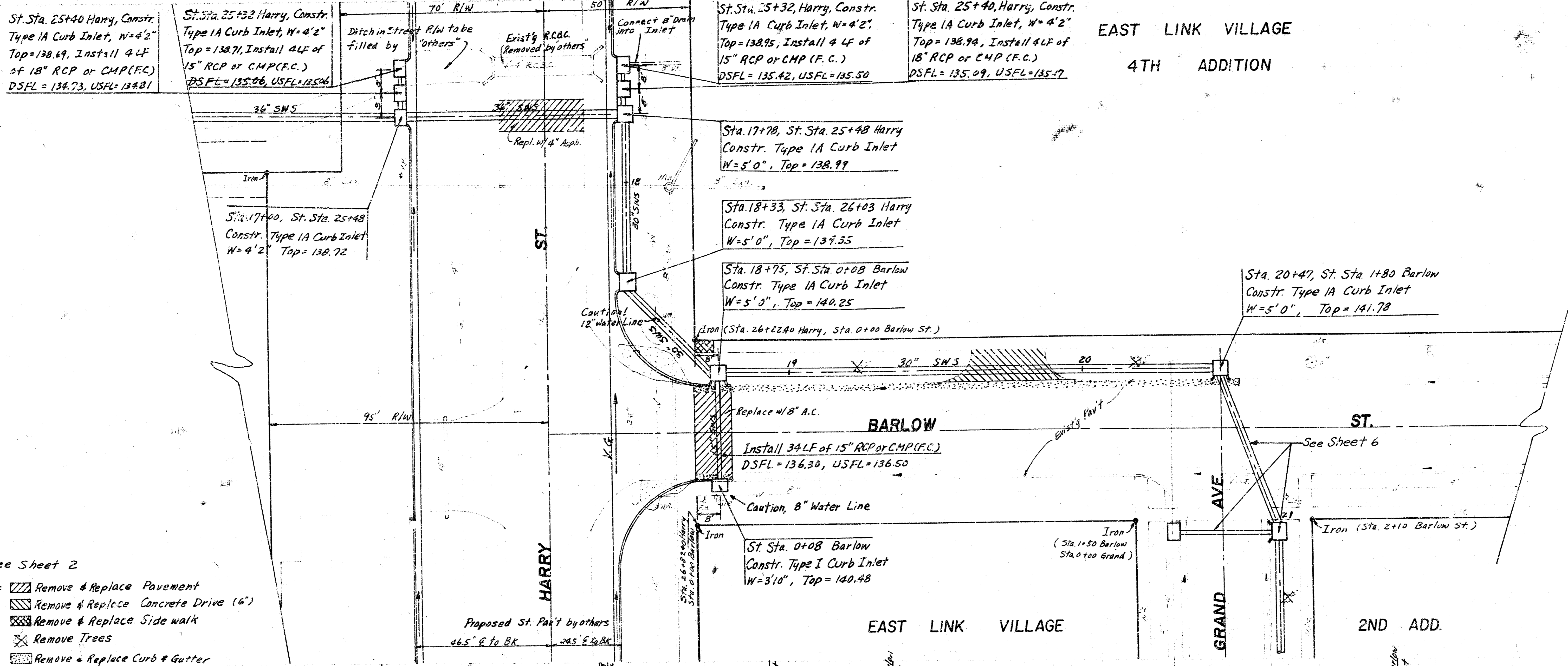
300 LF of 36" RCP @ 0.74%
Alt. 300 LF of 36" CMP @ 0.74% (fully paved & fully coated)

280 LF of 36" RCP @ 0.66%
Alt. 280 LF of 36" CMP @ 0.66% (fully paved & fully coated)



SWS No. 175

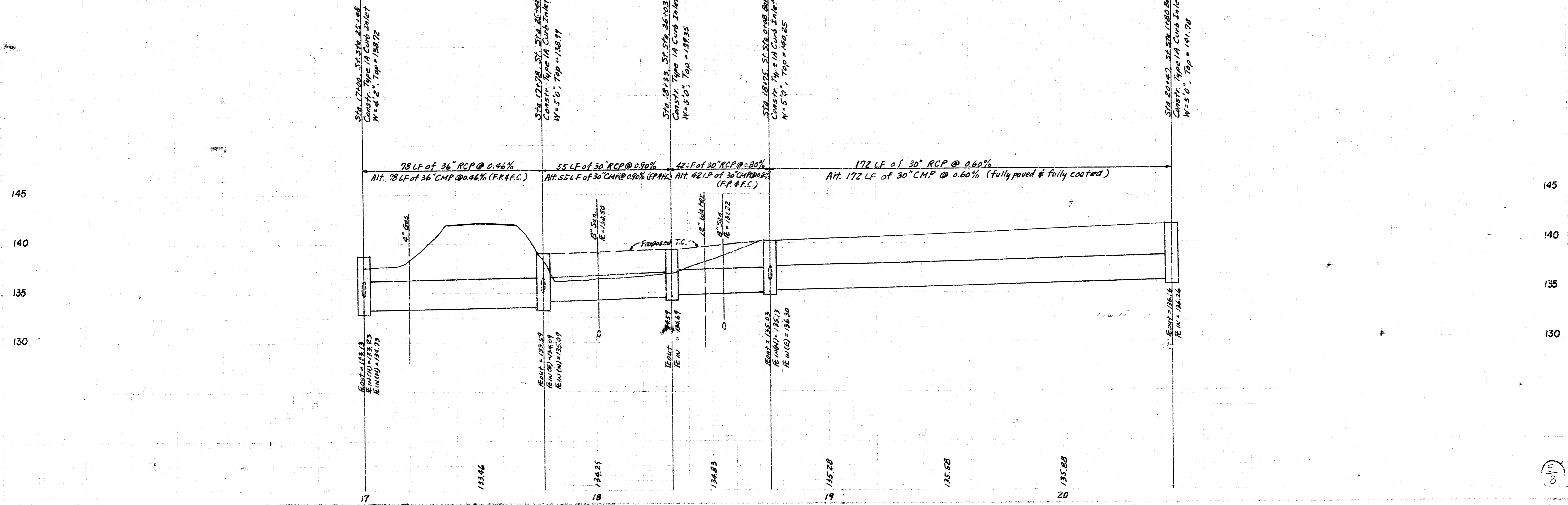
FILMED FROM THE BEST AVAILABLE COPY.....



EAST LINK VILLAGE
4TH ADDITION

Scale: 1"=20'

- B.M.: See Sheet 2
- Notation:
- Remove & Replace Pavement
 - Remove & Replace Concrete Drive (6')
 - Remove & Replace Side walk
 - Remove Trees
 - Remove & Replace Curb & Gutter

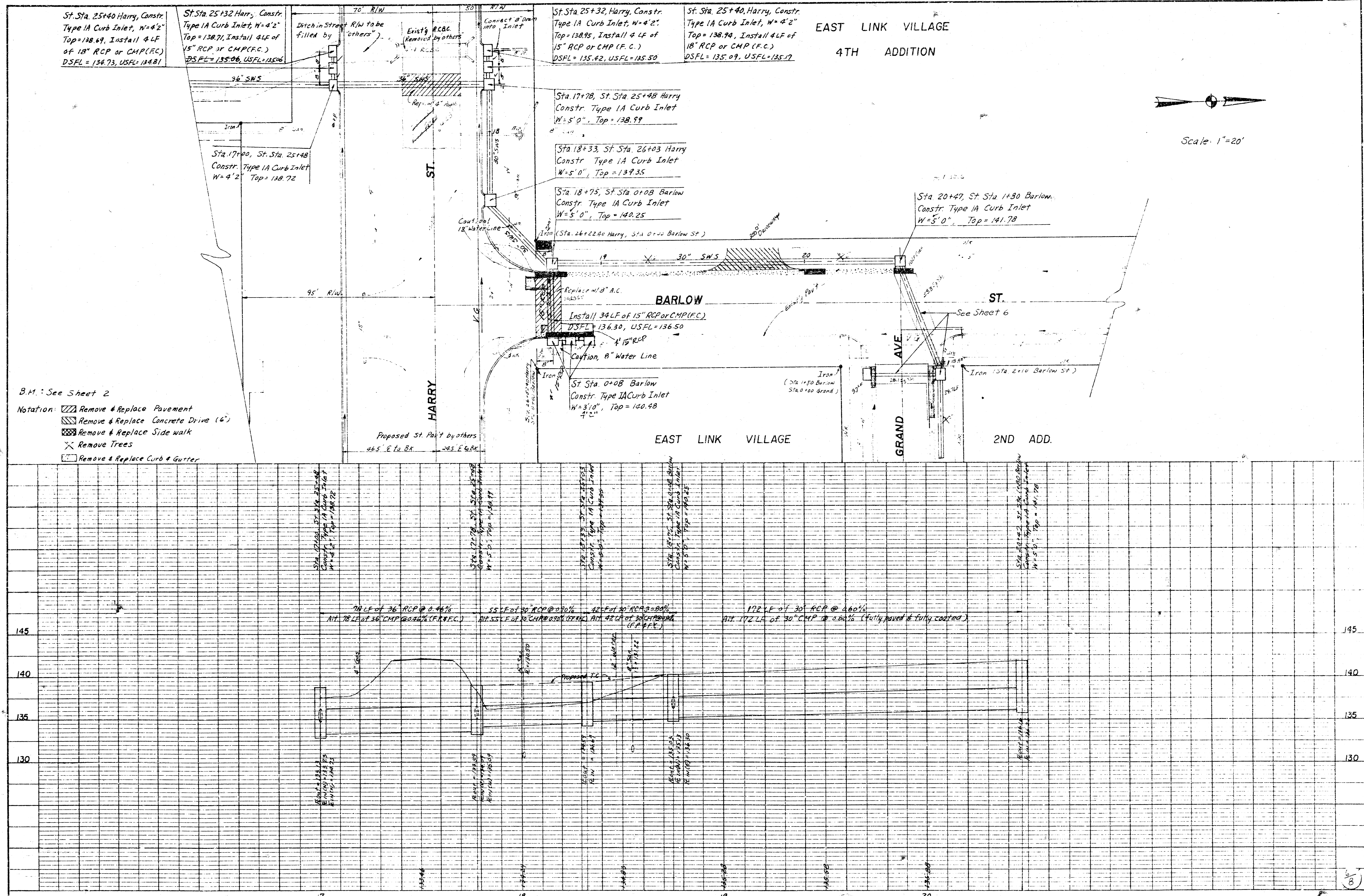


SWS No. 175

FILMED FROM THE BEST AVAILABLE COPY.....

DATE: _____ BY: **PLP**
 DRAWING NO.: **175**
 SHEET NO.: **175**
 PROJECT: **EAST LINK VILLAGE 4TH ADDITION**
 DRAWN BY: _____
 CHECKED BY: _____
 IN CHARGE: _____

DATE: _____ BY: _____
 DRAWING NO.: **175**
 SHEET NO.: **175**
 PROJECT: **EAST LINK VILLAGE 4TH ADDITION**
 DRAWN BY: _____
 CHECKED BY: _____
 IN CHARGE: _____



Scale: 1"=20'

B.M.: See Sheet 2

Notation:
 [Hatched] Remove & Replace Pavement
 [Cross-hatched] Remove & Replace Concrete Drive (6")
 [Diagonal lines] Remove & Replace Side walk
 [X] Remove Trees
 [Box] Remove & Replace Curb & Gutter

FILMED FROM THE BEST AVAILABLE COPY

