

PAWNEE MESA ADDITION STORM WATER SEWER NO. 187

PROJECT NO.
468 - 76 - 245 - 80933 - 000 - 000 - 001

CITY OF WICHITA, KANSAS
R. W. BRUGGEMAN, CITY ENGINEER

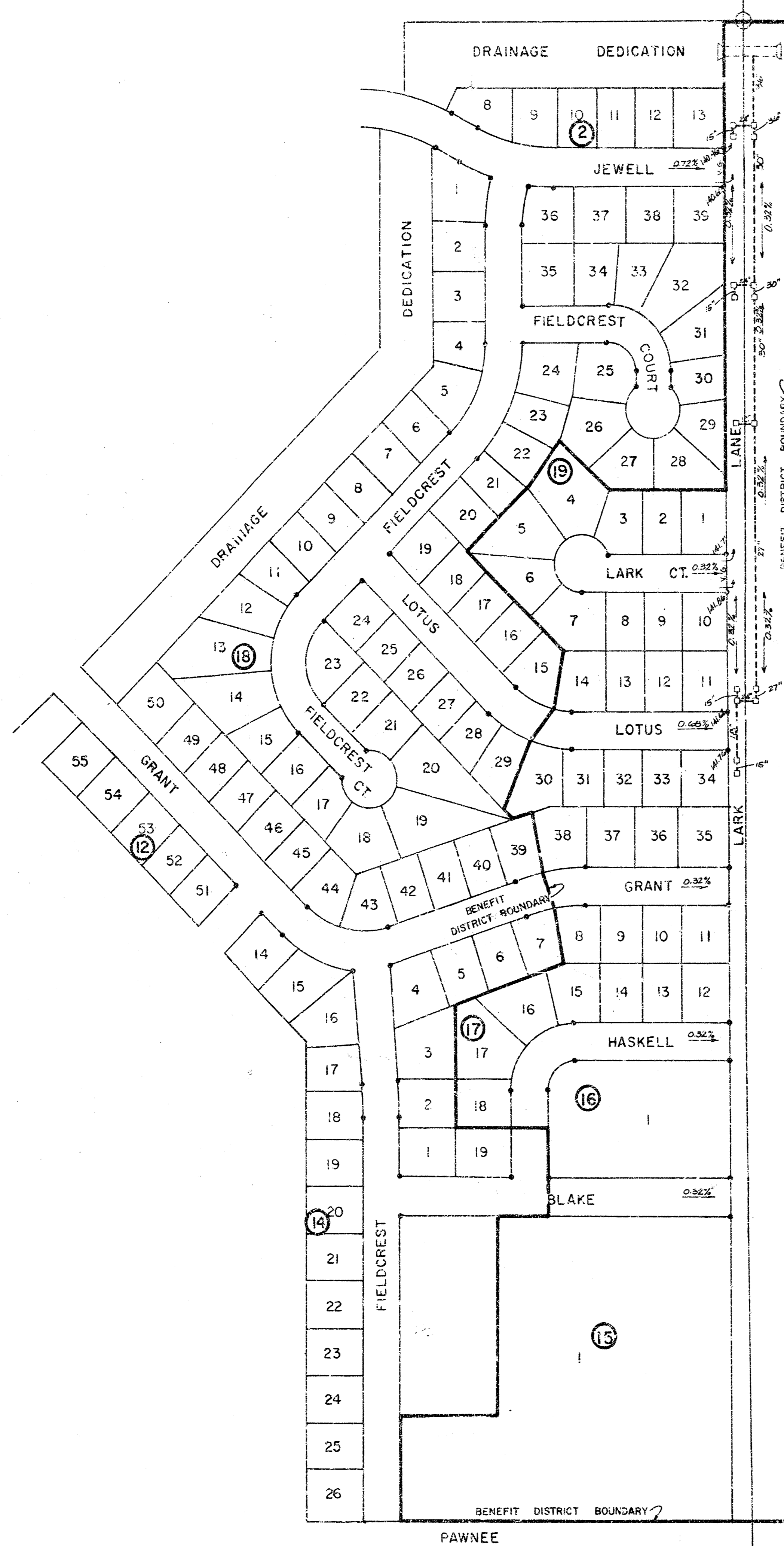
INDEX TO DRAWINGS

SHEET NO.	DESCRIPTION
1	COVER SHEET
2 - 4	PLAN AND PROFILE
5	DETAIL



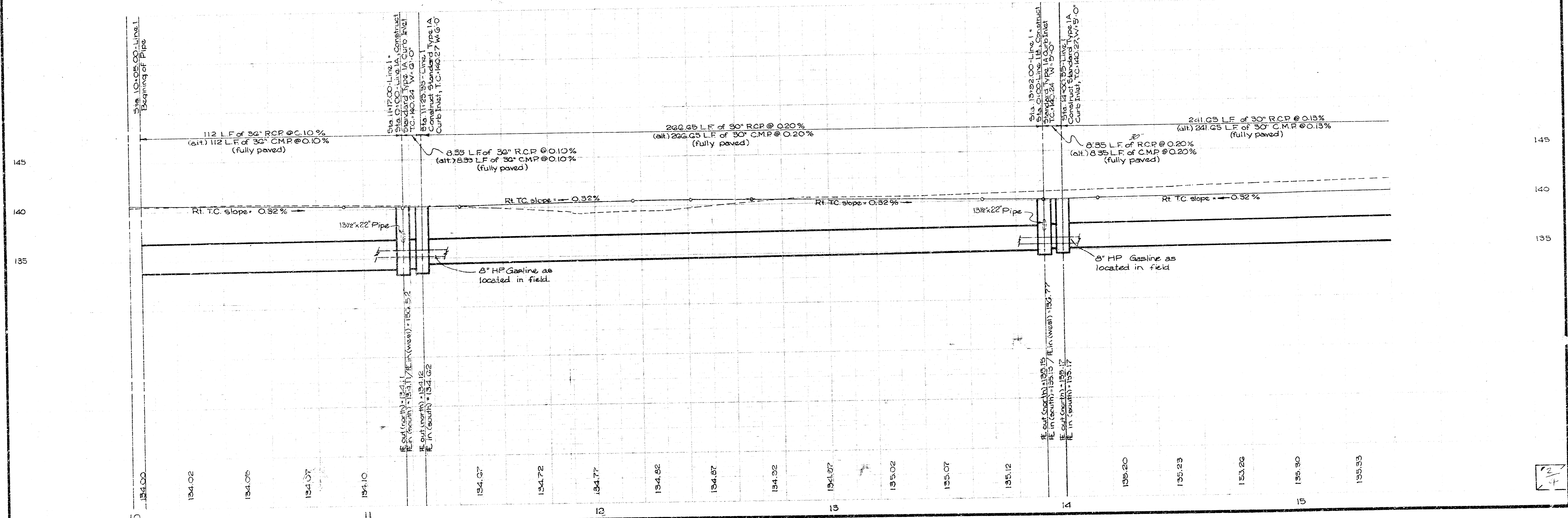
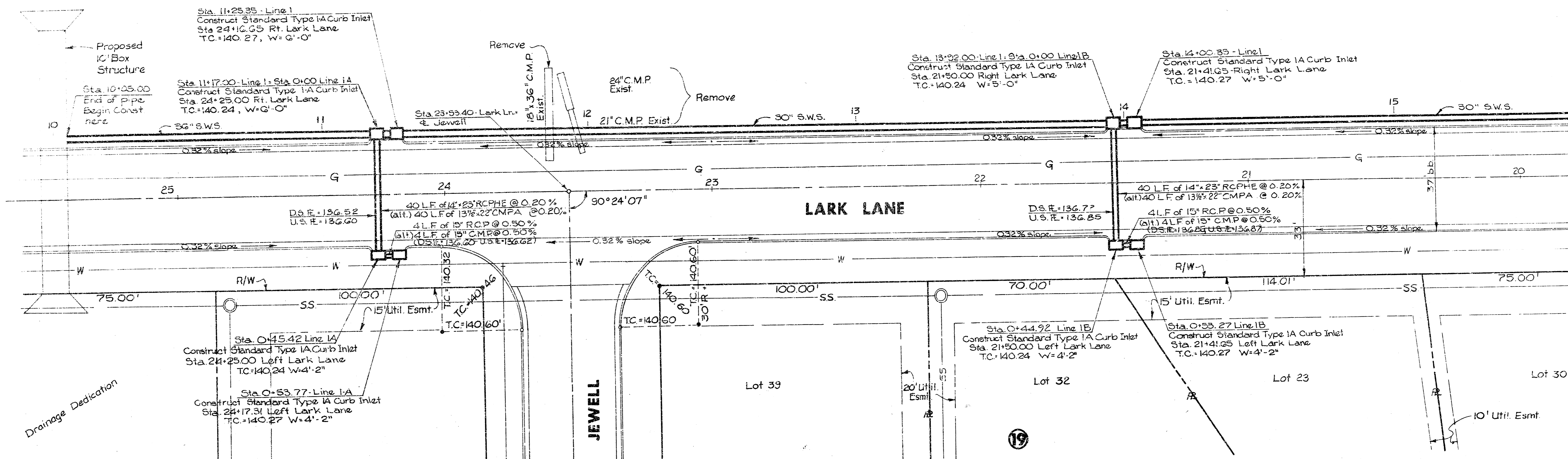
GENERAL NOTES

- CONTRACTOR SHALL COORDINATE WORK WITH PAVING AND SANITARY CONTRACTORS AND CONTACT RELEVANT UTILITY COMPANIES AND OTHER AGENCIES INVOLVED WITH THIS PROJECT SITE DEVELOPMENT.
- FIELD ENGINEER SHALL TAKE TIES TO ALL IRONS AND THIMBLES IN THE PROJECT AREA BEFORE CONSTRUCTION BEGINS. FIELD ENGINEER SHALL REPLACE ALL SUCH IRONS AND THIMBLES DISTURBED DURING CONSTRUCTION.
- THE TOPS OF INLETS AS NOTED ON THE PLANS MAY VARY SO AS TO MEET PROPOSED TOP OF CURB ELEVATION OR PAVEMENT ELEVATIONS. THE FIELD ENGINEER SHALL LOCATE INLETS WITH REFERENCE TO PROPOSED PAVING PLANS OF THE PERTINENT STREETS.
- ALL METAL PIPES SHALL BE HELICALLY CORRUGATED PIPE. ALL CORRUGATED PIPE SHALL BE SMOOTH FLOW PIPES FOR SIZES 24" DIAMETER AND LARGER. ALL CONNECTIONS FOR THESE PIPES SHALL BE OF FAIRLY WATERTIGHT CONSTRUCTION USING HUGGER TYPE COUPLERS OR EQUAL.
- ALL CONCRETE SHALL BE "6 - SACK CONCRETE" UNLESS OTHERWISE NOTED.
- CONTRACTOR SHALL AVOID UNCOVERING EXISTING WATER LINES UNLESS ABSOLUTELY NECESSARY. UNCOVERING SHALL BE DONE ONLY IN THE PRESENCE OF A WATER DEPARTMENT ENGINEER.
- CONTRACTOR SHALL HAVE THE OPTION OF INSTALLING PRECAST CONCRETE TYPE 1A CURB INLETS IN LIEU OF THE BRICK TYPE STRUCTURE. SEE STANDARD DETAIL PRECAST TYPE 1A CURB INLET DATED AUGUST, 1973.
- IF THE DRAINAGE CHANNEL AND RELATED STRUCTURES HAVE NOT BEEN COMPLETED WHEN NEEDED FOR COMPLETION OF THIS PROJECT, CONTRACTOR IS TO INSTALL END SECTION AND DITCH AS REQUIRED TO DRAIN STORM SEWER.

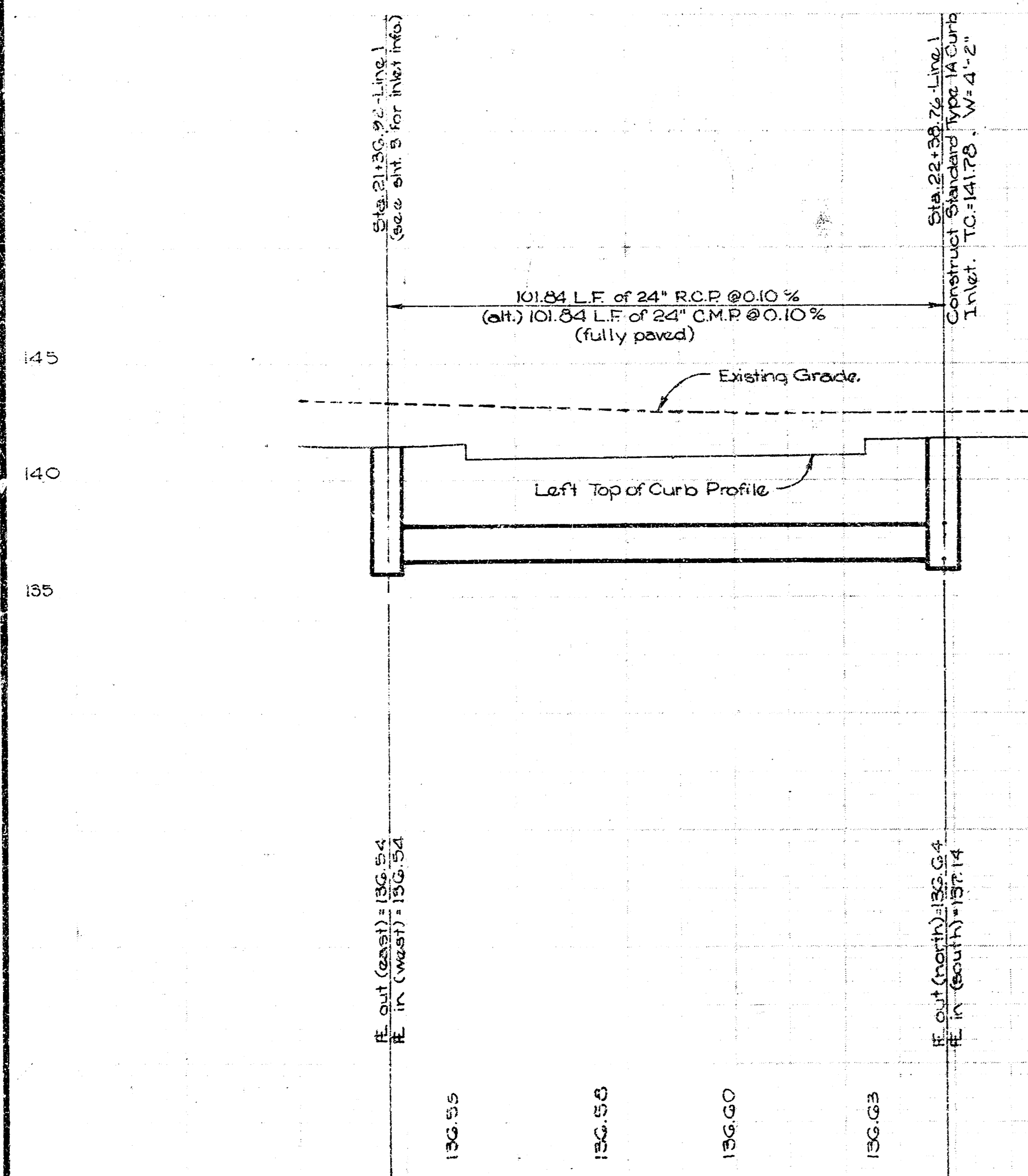
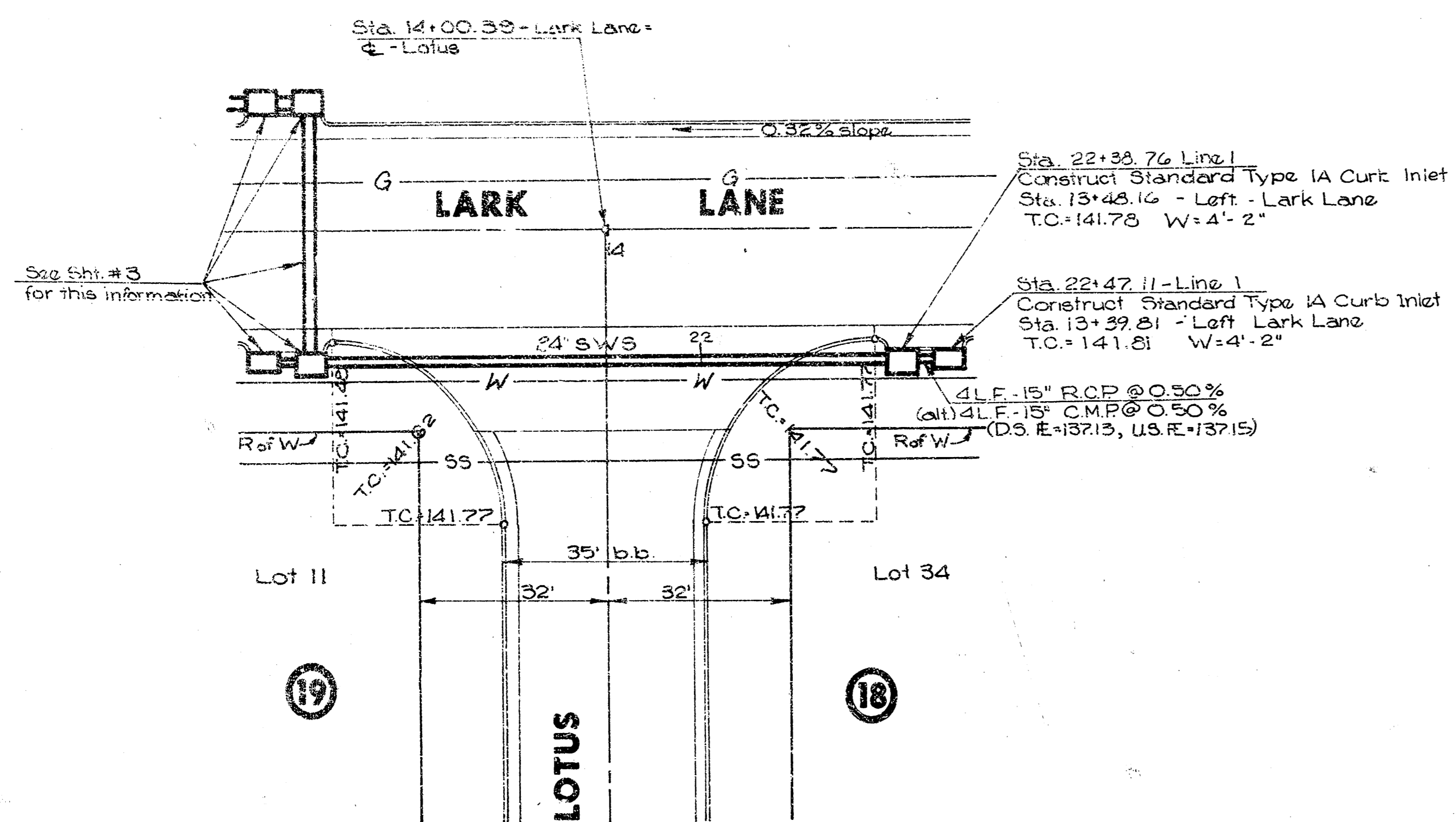


Van Doren - Hazard - Stallings
Architects • Engineers • Planners
Topeka Wichita Minneapolis

Sheet 1
of 4



Scale:
 Horiz. - 1" = 20'
 Vert. - 1" = 5'



42