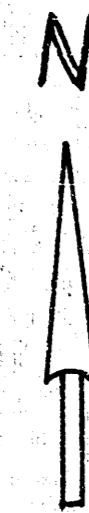
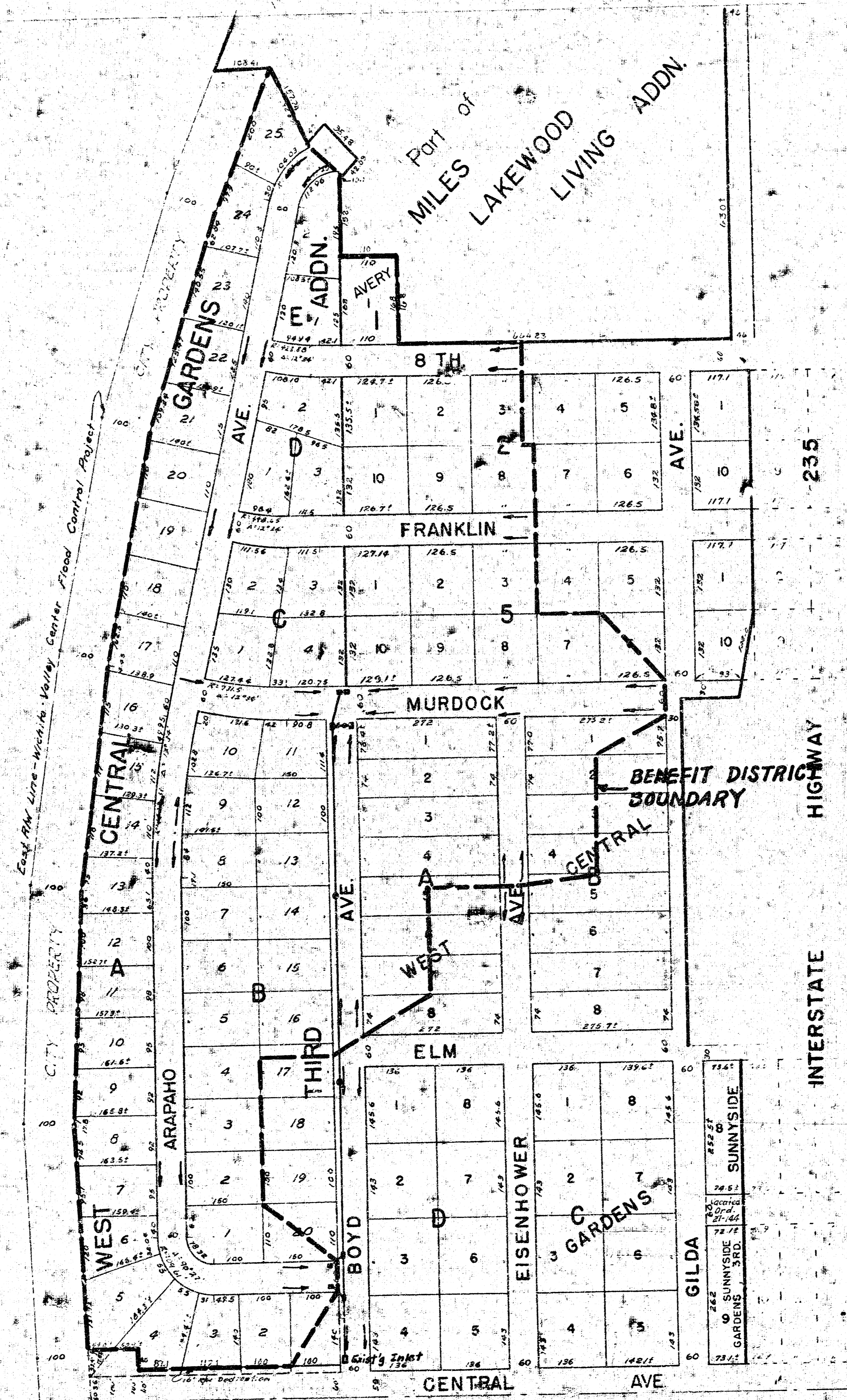


# STORM WATER SEWER NO. 196



### GENERAL NOTES

- 1.) CONTRACTOR SHALL COORDINATE WORK WITH PAVING AND SANITARY CONTRACTORS, AND CONTACT RELEVANT UTILITY COMPANIES AND OTHER AGENCIES INVOLVED WITH THIS PROJECT.
- 2.) FIELD ENGINEER SHALL TAKE TIES TO ALL IRONS AND THIMBLES IN THE PROJECT AREA BEFORE CONSTRUCTION. FIELD ENGINEER SHALL REPLACE ALL SUCH IRONS AND THIMBLES DISTURBED DURING CONSTRUCTION.
- 3.) THE TOPS OF INLETS AND MANHOLES AS NOTED ON THE PLANS MAY VARY SO AS TO MEET PROPOSED TOP OF CURB ELEVATIONS OR PAVEMENT ELEVATIONS. THE FIELD ENGINEER SHALL LOCATE INLETS AND MANHOLES WITH REFERENCE TO PROPOSED PAVING PLANS OF THE PERTINENT STREETS.
- 4.) ALL CONCRETE SHALL BE "6-SACK CONCRETE" UNLESS OTHERWISE NOTED.
- 5.) THE CONTRACTOR SHALL AVOID REMOVING ANY TREES UNLESS IT IS ABSOLUTELY NECESSARY. CONTRACTOR IS TO TAKE WHATEVER PRECAUTION THE ENGINEER DEEMS NECESSARY (SHORING, SHIELDING, ETC.) TO INSURE THAT THE TREES IN THE VICINITY OF CONSTRUCTION ARE PROTECTED FROM INJURY (COST INCIDENTAL TO PROJECT).
- 6.) CONTRACTOR SHALL AVOID UNCOVERING EXISTING WATER LINES, UNLESS ABSOLUTELY NECESSARY. UNCOVERING SHALL BE DONE ONLY IN THE PRESENCE OF A WATER DEPARTMENT ENGINEER.
- 7.) CONTRACTOR SHALL HAVE THE OPTION OF INSTALLING PRE-CAST TYPE IA CURB INLET IN LIEU OF THE BRICK TYPE STRUCTURE. SEE STANDARD DETAIL PRE-CAST TYPE IA CURB INLET DATED AUGUST, 1979.
- 8.) COST OF REMOVING EXISTING 18" STUB AND CONNECTING 24" PIPE TO INLET SHALL BE INCIDENTAL TO PROJECT.
- 9.) ALL CONCRETE REMOVAL IS TO BE AT EXISTING JOINTS OR SAWS; COST OF ANY SAWING IS TO BE KEPT TO CONCRETE REMOVAL.



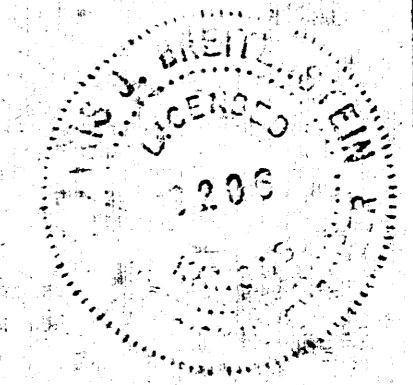
### INDEX

Sheet 1	Cover Sheet
Sheet 2-4	Plan & Profile
Sheet 5	Type IA Inlet
Sheet 6	Type B Manhole

R.W. BRUGGEMAN, DIRECTOR OF ENGINEERING DEPARTMENT  
CITY OF WICHITA, KANSAS

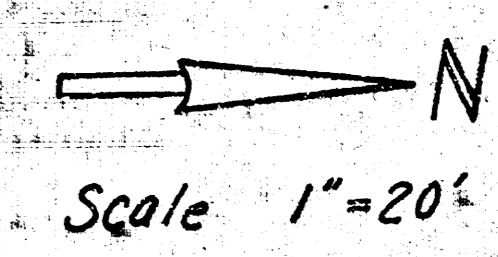
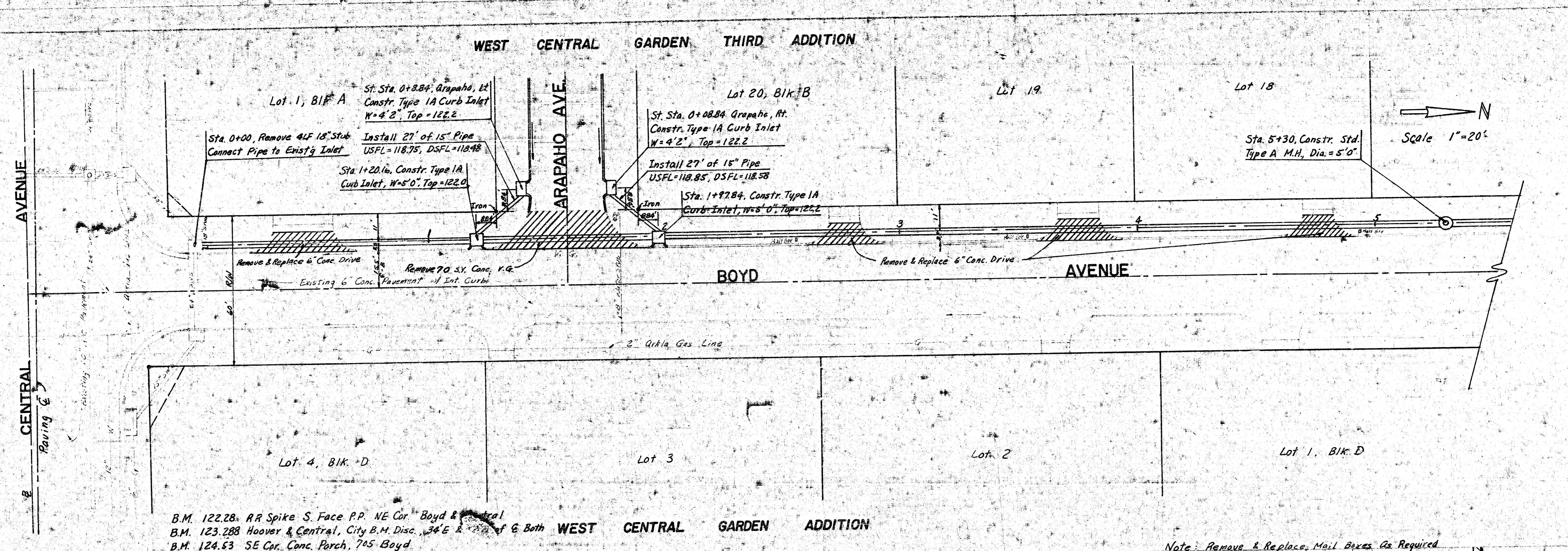
PROJECT NO. 468 76 245 80978 000 000 001

DATE: \_\_\_\_\_



1/4

WEST CENTRAL GARDEN THIRD ADDITION



B.M. 122.28 RR Spike S. Face P.P. NE Cor. Boyd & Central  
 B.M. 123.288 Hoover & Central, City B.M. Disc. 34' E & 24' N of E Both  
 B.M. 124.53 SE Cor. Conc. Parch. 705 Boyd

Note: Remove & Replace Mail Boxes As Required

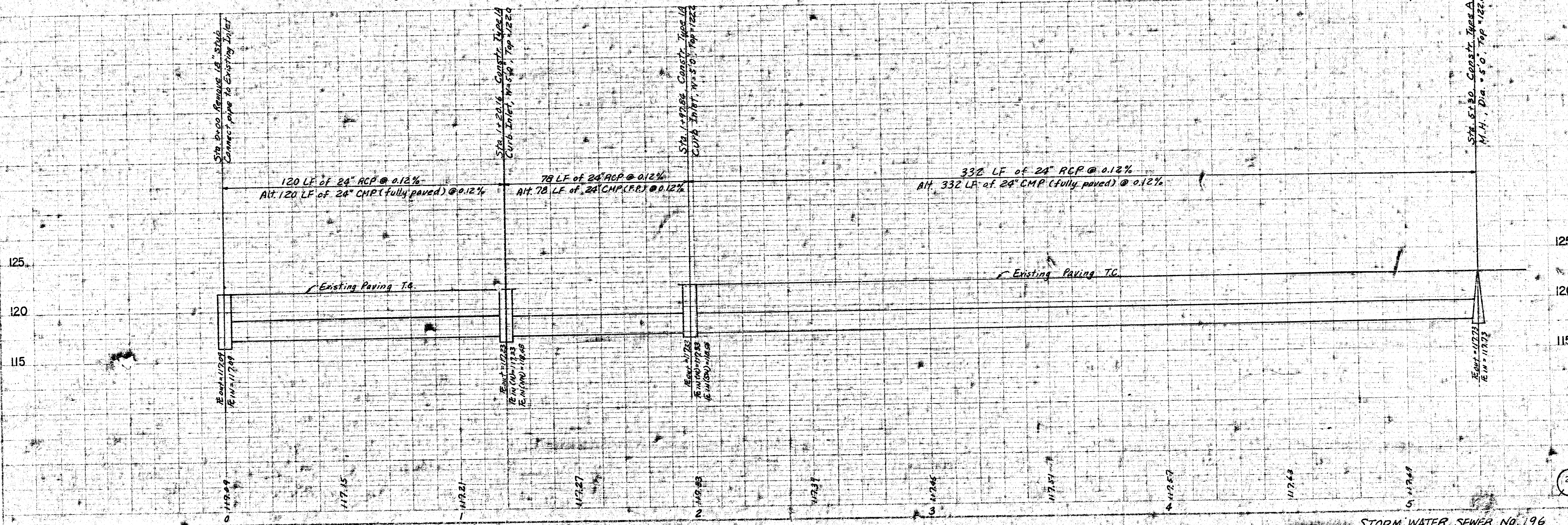
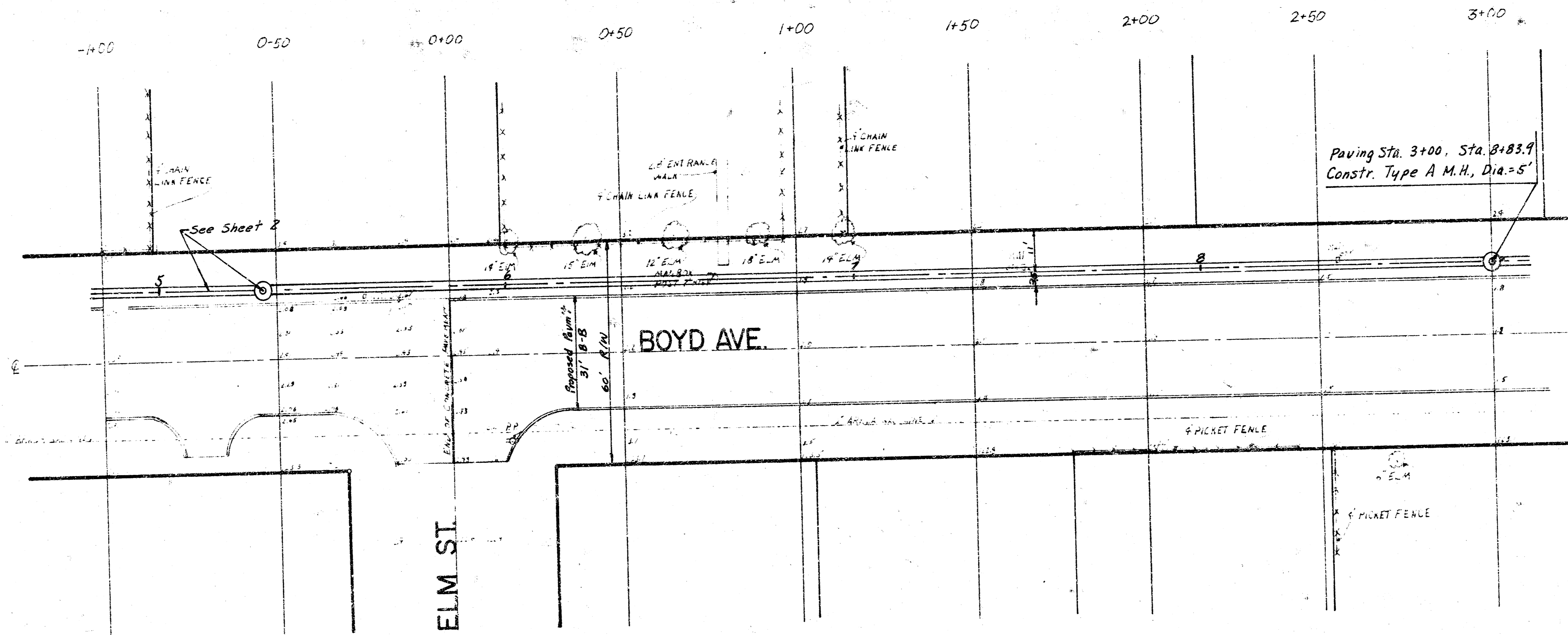


PLATE 5, PLAN PROFILE  
 48 7064 MADE IN CAN.

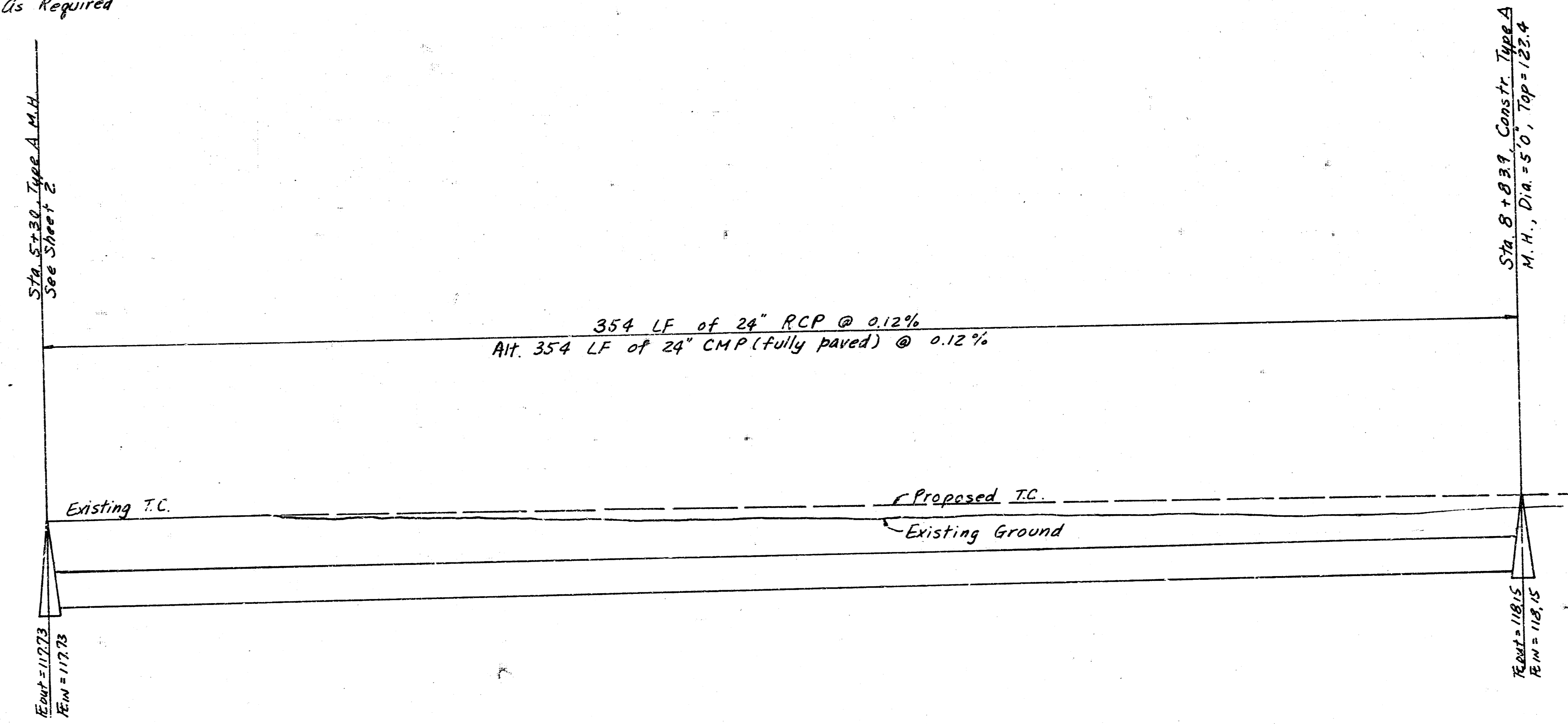
STORM WATER SEWER No. 196

FILED FROM THE BEST AVAILABLE COPY .....



Scale 1"=20'

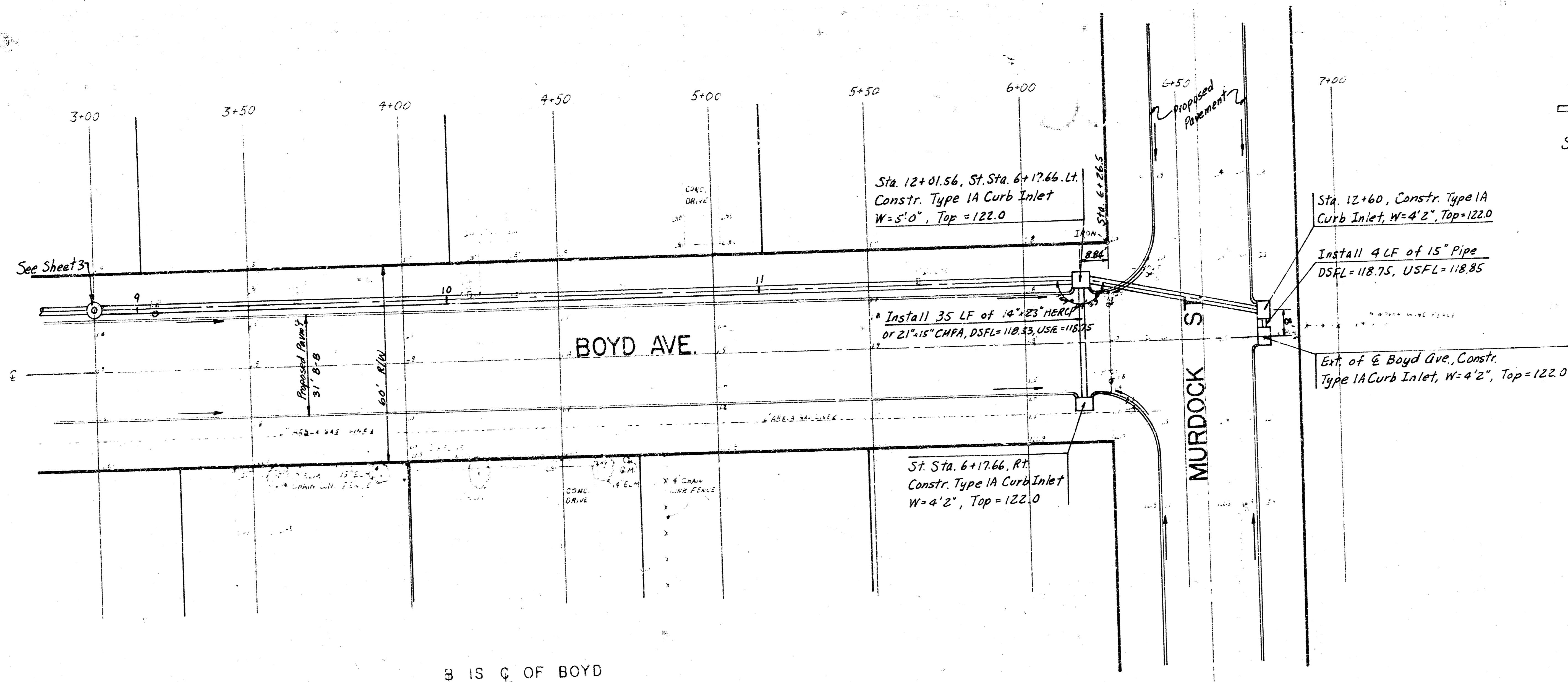
B.M. See Sheet 2  
 Note: Remove & Replace Mail Boxes As Required



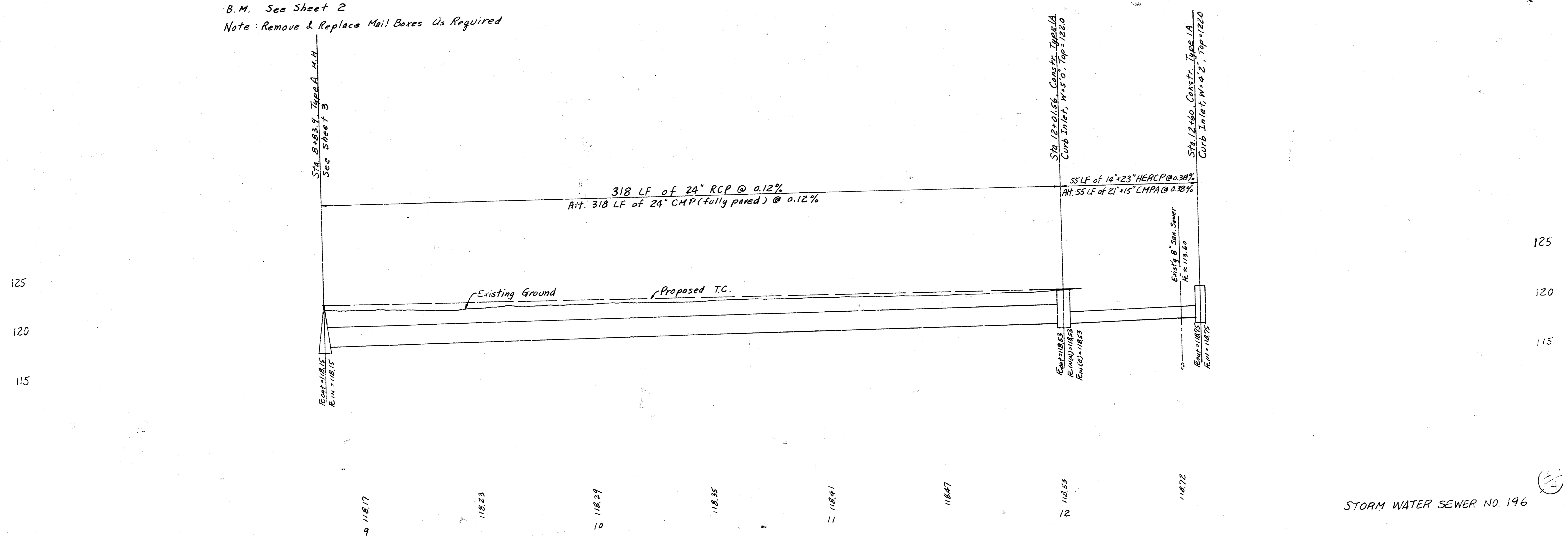
11775 11781 11787 11793 11799 11805 11811

9 STORM WATER SEWER NO. 196

FILMED FROM THE BEST AVAILABLE COPY.....



B.M. See Sheet 2  
 Note: Remove & Replace Mail Boxes As Required



STORM WATER SEWER NO. 196

FILMED FROM THE BEST AVAILABLE COPY .....