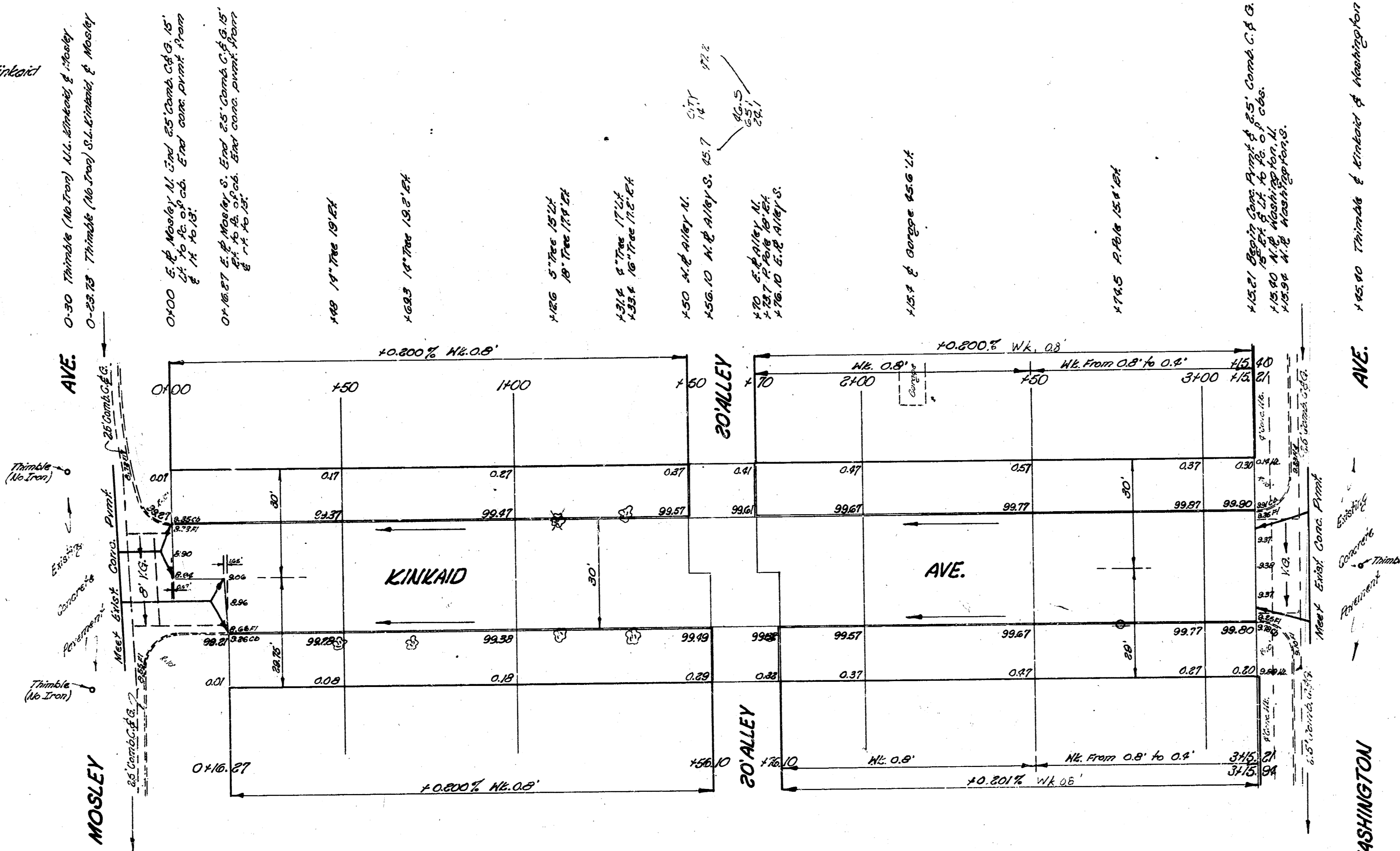


B.M. 101.97 N.W. cor. Church & S.E. cor. Mosley & Kincaid

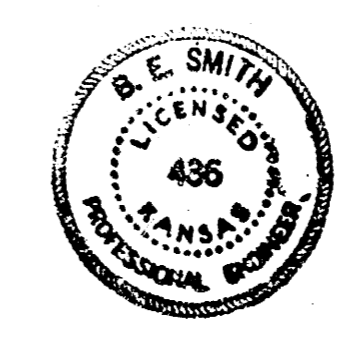
Stationing on $\frac{1}{2}$

Survey 3527
Plan 5016
E.C. Condit
Checked



37.5 CITY 38.0
37.3
38.3
38.5

CRANETY	EXC	CITY
110.3	76.3	44.2
110.3	76.3	44.2
Total 220.6	Total 152.6	Total 88.4



KINKAID AVE.
E.L. Mosley Ave. to N.W. Washington Ave
30' Conc. & C.C.

CITY OF WICHITA, KANS.

B.E. SMITH
MARCH 1954

CITY ENGINEER
Prod. No. C-13-220

