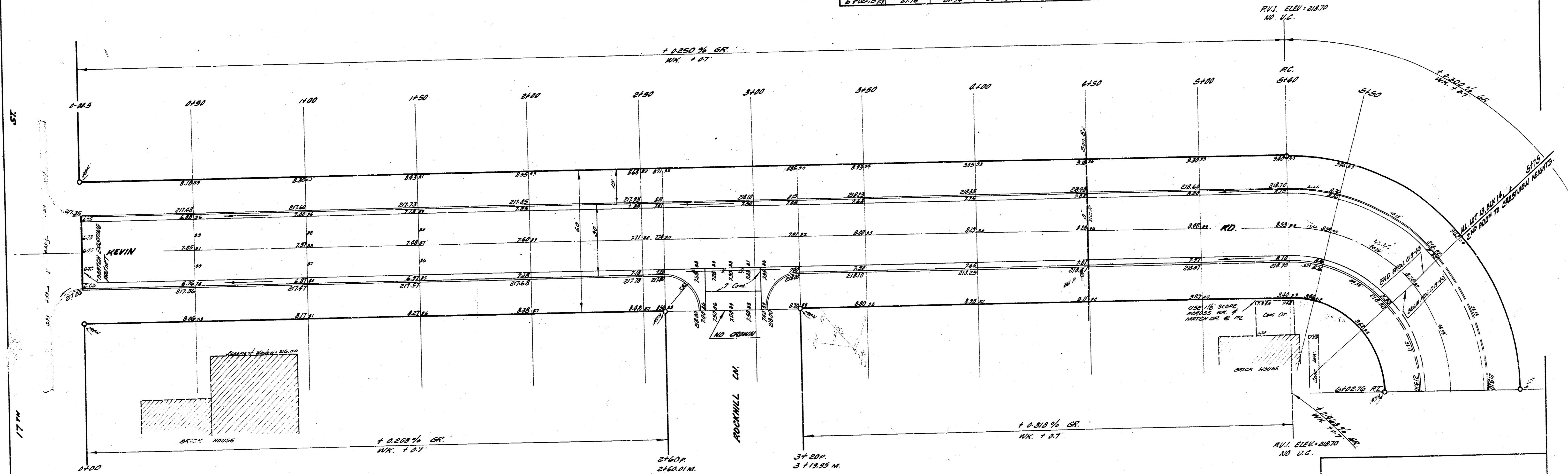


B.M. 27.29 "A" IN RITCHIE TAP W. END KEVIN N. END RD.  
 N.L. 17TH ST. @ KEVIN RD.  
 B.M. 29.88 "T" IN TROY FIRE PLUG ON N.E. COR 17TH & EDGEWOOD.  
 STATIONING @ BASE LINE ALONG EAST LINE OF KEVIN RD.

CURVE DATA BASED ON E.C.

STATION	ARC LENGTH	CHORD LENGTH		DEFLECTION	TOTAL DEFLECTION
		P.C. TO P.T.	P.T. TO P.C.		
3160 P.C.	10'	11.78'	22.12'	2° 08' 04"	7° 08' 04"
3170	25'	28.91'	57.00'	7° 06' 00"	26° 04' 04"
6100-7500	21.76'	38.76'	82.06'	10° 32' 06"	84° 51' 00"

TOTAL ARC LENGTH = 62.76'  
 MAX. DEFLECTION / FT. = 0.0023



DRAWN BY: B. E. SMITH  
 CHECKED BY: B. E. SMITH  
 DATE: 10/1/26

**KEVIN RD**  
 N.L. 17TH ST TO N.L. 13TH ST.  
 26-2-30 A.C.  
 CITY OF WICHITA, KANSAS  
 B. E. SMITH, CITY ENGINEER  
 DATE 10/1/26 PROJ. NO. C-13-26

EXCERPTION  
 PROPERTY CITY  
 1926-7  
 100-1-26-11  
 12227-1-16, 10-3-2-16



1/2

