

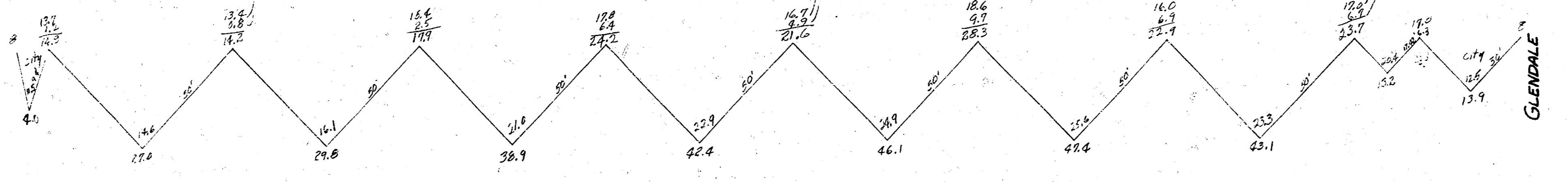
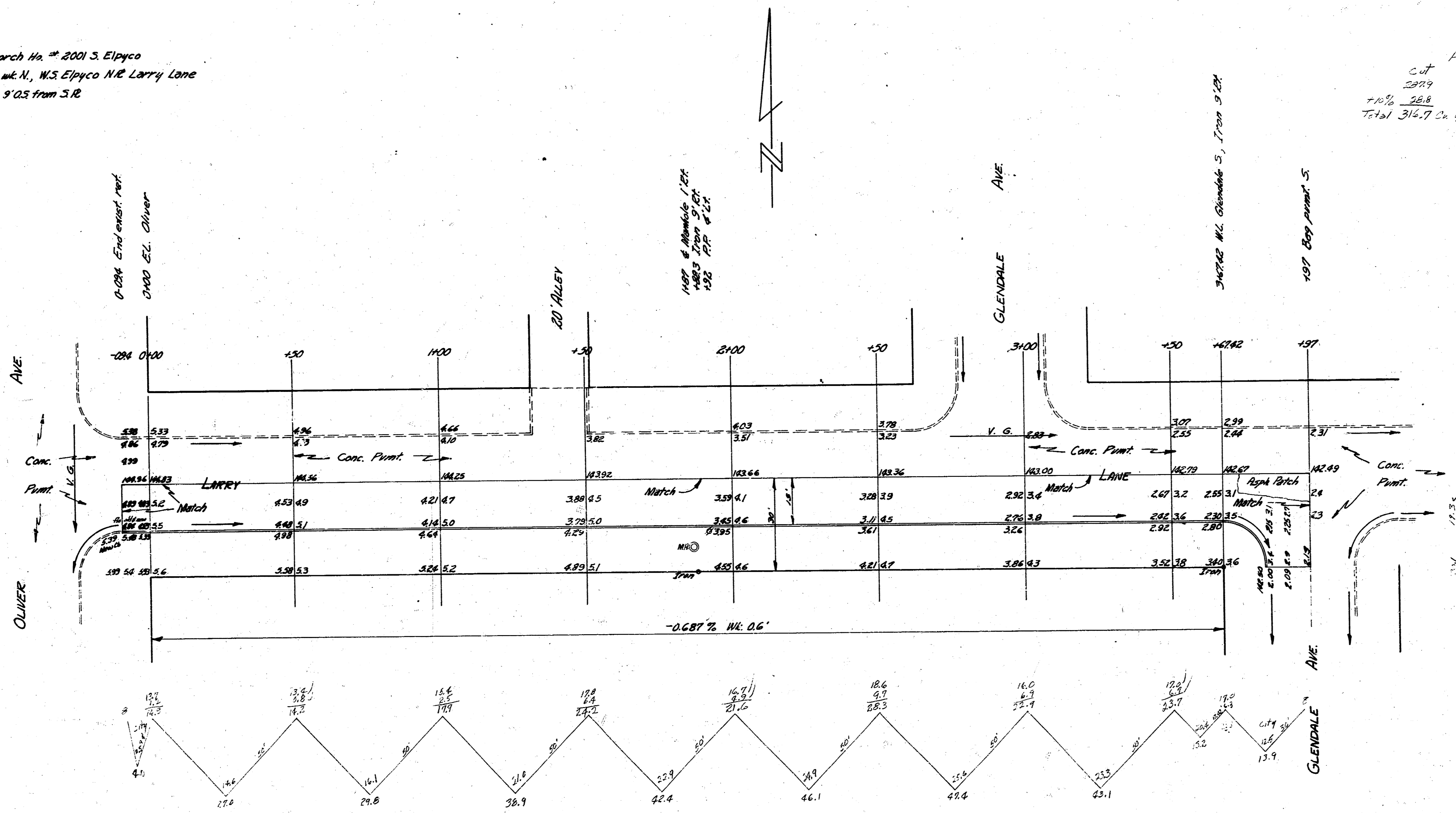


B.M. 144.81 NE. cor. conc. parch. No. 2001 S. Elpyco  
 B.M. 142.33 76" in Globe, ctr. mt. N., W.S. Elpyco N.E. Larry Lane  
 Channy E. on 9' OS from S.R.

ELEVATION

Cut	Prop	Fill	City	Diff
2.77	0	0	29.1	0
1.12	0	0	2.8	0
Total 314.7 Cu Yds.			Total 30.9	

Survey File BK 12-3  
 Exp. 2/2/54  
 Checked J



3 1/2 LARRY LANE  
 E.L. OLIVER TO W.L. GLENDALE  
 15' CONC. & CB.  
 CITY OF WICHITA, KANSAS  
 B.E. SMITH CITY ENGINEER  
 MAY 1954 PROJ. No. C14-102

