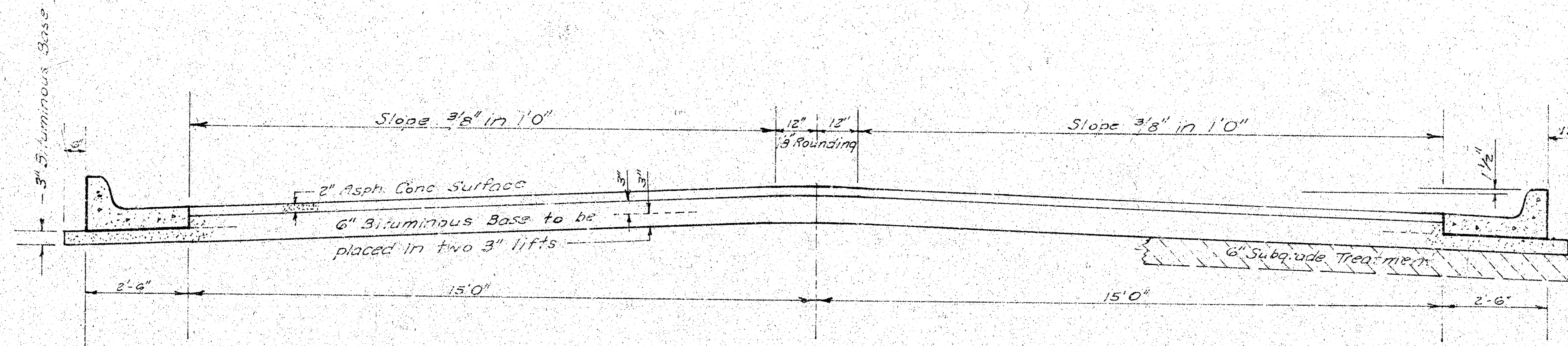


LAUREL
 N.L. BEDELL TO N.L. LOT 32, BLK. I,
 QUAIL MEADOWS I ST. ADDN.
 30'-2'-34" ASPH. CONC.
 PROJ. NO. DAKS574020



TYPICAL SECTION

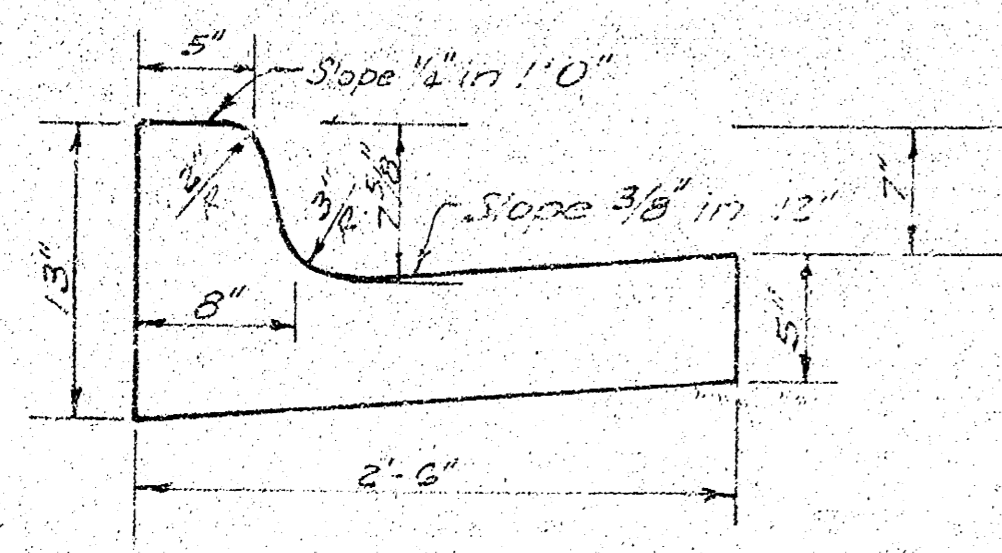
35' ASPHALTIC CONCRETE PAVEMENT WITH BITUMINOUS BASE

A TACK COAT OF EMULSIFIED ASPHALT (SS-1H) SHALL BE APPLIED AT AN APPROXIMATE RATE 0.05 GALLONS PER SQ YD BETWEEN LIFTS OF ASPHALTIC MATERIALS WHEN ORDERED BY THE ENGINEER. TACK COAT WILL NOT BE PAID FOR DIRECTLY AND SHALL BE CONSIDERED AS SUBSIDIARY TO PRICE BID FOR ASPHALTIC PAVEMENT.

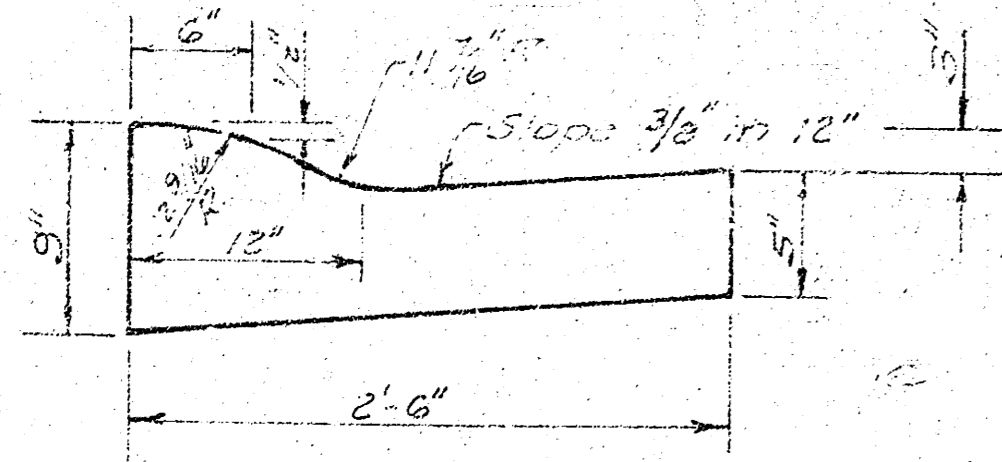
BITUMINOUS BASE AND ASPHALTIC CONCRETE WEARING SURFACE SHALL BE PLACED WITH A LAYDOWN MACHINE HAVING AUTOMATIC ELECTRONIC CONTROLS FOR CROWN AND GRADE. CONSTRUCTION JOINTS IN EACH LIFT SHALL BE STAGGERED A MINIMUM DISTANCE OF 1' WITH JOINTS IN PRECEDING LIFTS AND PLACED SUCH THAT A JOINT WILL BE CONSTRUCTED ON THE CENTERLINE IN THE TOP LIFT.

*The A.C. Pavement between the comb curb & gutter shall be paid as Sq.Yds. B' A.C. Pavement (6" Bituminous Base).
 The Bituminous Base under the comb curb & gutter shall be paid as Sq.Yds. 3" Bituminous Base.*

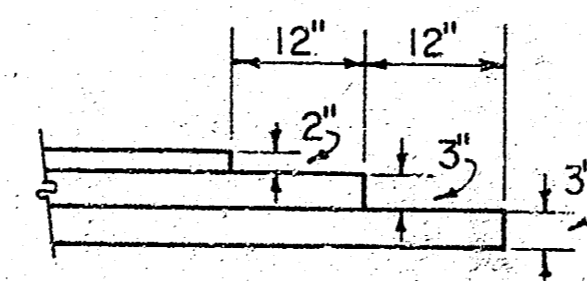
COMBINED CURB & GUTTER



ROLL TYPE CURB & GUTTER



DETAIL OF TRANSVERSE CONSTRUCTION JOINT



TRANSVERSE CONSTRUCTION JOINTS SHALL BE CONSTRUCTED IN FLEXIBLE BASE PAVEMENTS AT LOCATIONS WHERE PAVEMENT TEMPORARILY ENDS TO FACILITATE FUTURE PAVEMENT CONSTRUCTION AS SHOWN BY DETAIL. THE COST OF CONSTRUCTING THE TRANSVERSE CONSTRUCTION JOINTS SHALL NOT BE MEASURED OR PAID FOR DIRECTLY BUT SHALL BE INCLUDED IN THE BID PRICE FOR SQUARE YARDS OF ASPHALTIC CONCRETE PAVEMENT.

CITY OF WICHITA KANSAS

DEPARTMENT of PUBLIC WORKS - Engineering
 Division

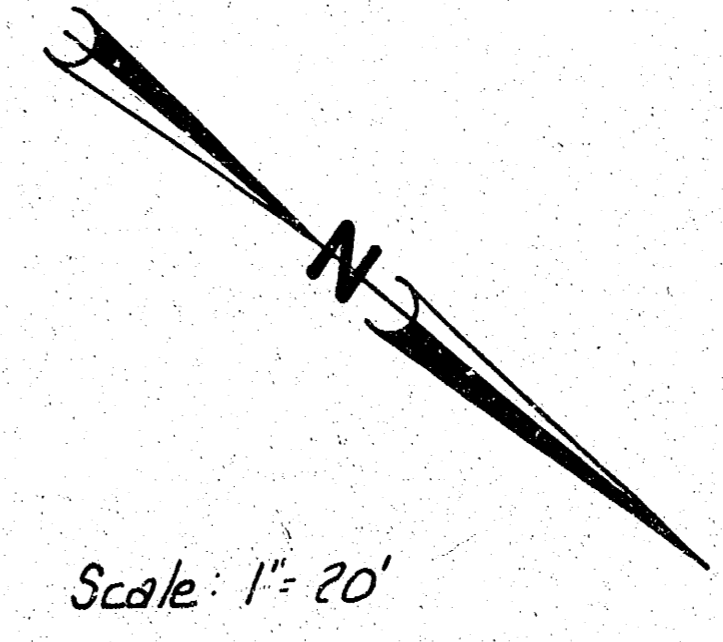
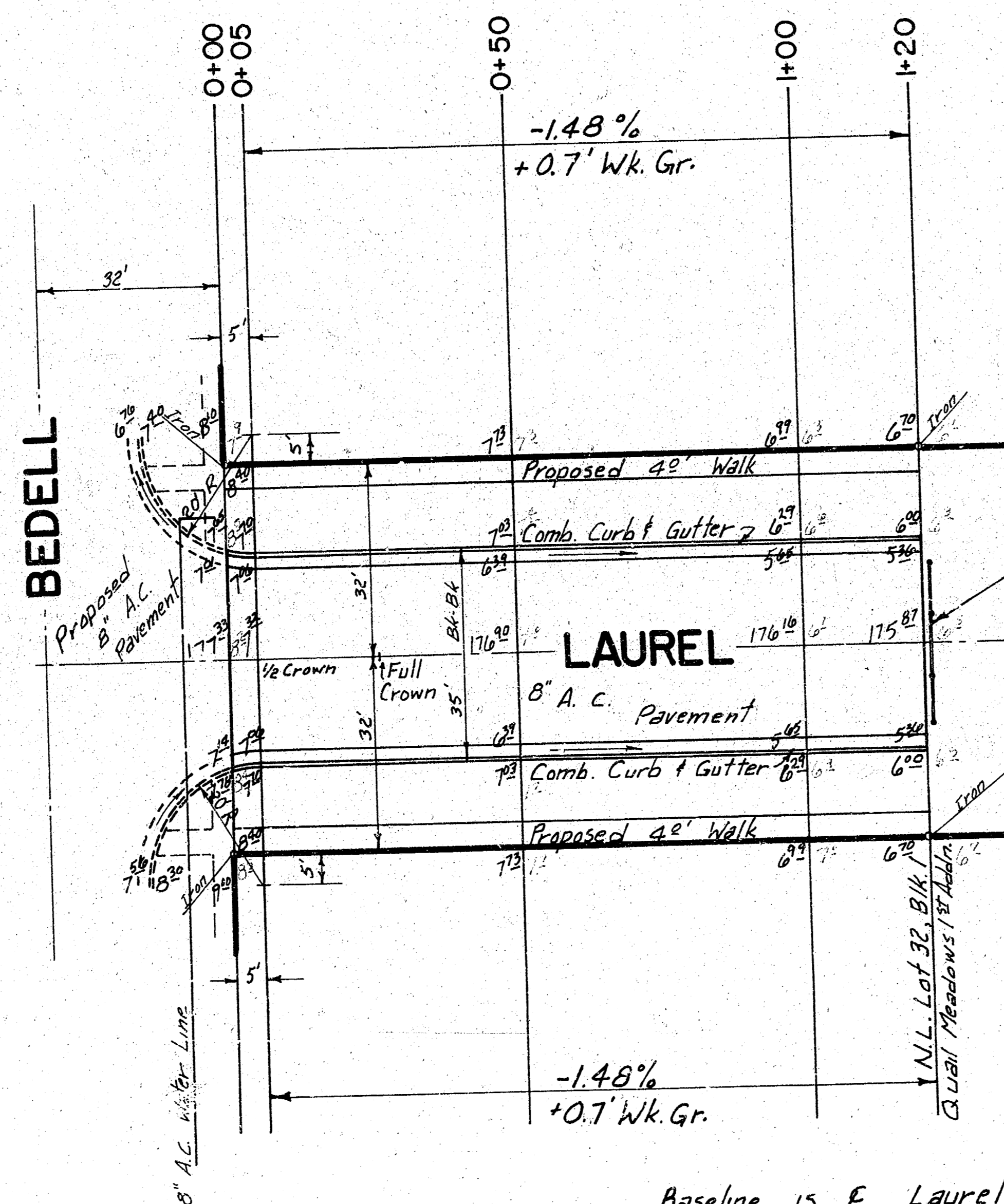
R. W. LINN CITY ENGINEER

DATE _____ Proj. No. _____

17

BM=184.60-R.R. SPIKE TOP 2' GUARD POST E. SIDE WEBB ROAD APPROX. 100' N. OF N.L. BEDELL W.
 BM=176.15-IRON IN THIMBLE 1/4 SEC. COR. LINCOLN & WEBB ROAD.

Survey Rises
 Plan A.L.A.G.
 Exc. A.L.A.G.
 Checked



Barricade by "Others"

Note: Contractor to grade dirt at end of pavement, drain north. Cost of grading is incidental to the project.

Note: Field Engineer to determine type of subgrade treatment. Subgrade treatment may consist of lime treatment, cement treatment, subgrade modification or any combination of these.

Baseline is E. Laurel
 0+00 - Begin Project N.L. Bedell
 1+20 - End Project N.L. Lot 32, Blk 1, Quail Meadows 1st Addition.

Note: Contractor to clear R/W and grade parking for sidewalk. Compact fill in sidewalk areas. Sidewalk to be built by "Others."

- EARTHWORK -

	Excavation	Comp. Fill
X-Sections	241.5 C.Y.	17.3 C.Y.
+10%	24.2 C.Y.	1.7 C.Y.
Total	265.7 C.Y.	19.0 C.Y.

App. 3 for Material

LAUREL
 N.L. BEDELL TO N.L. LOT 32, BLK. 1,
 QUAIL MEADOWS FIRST ADDN.
 30'-2'-34' ASPH. CONC.
 CITY OF WICHITA, KS.
 R.W. LINN - CITY ENGINEER
 DATE: PROJ. NO. DAKS574020