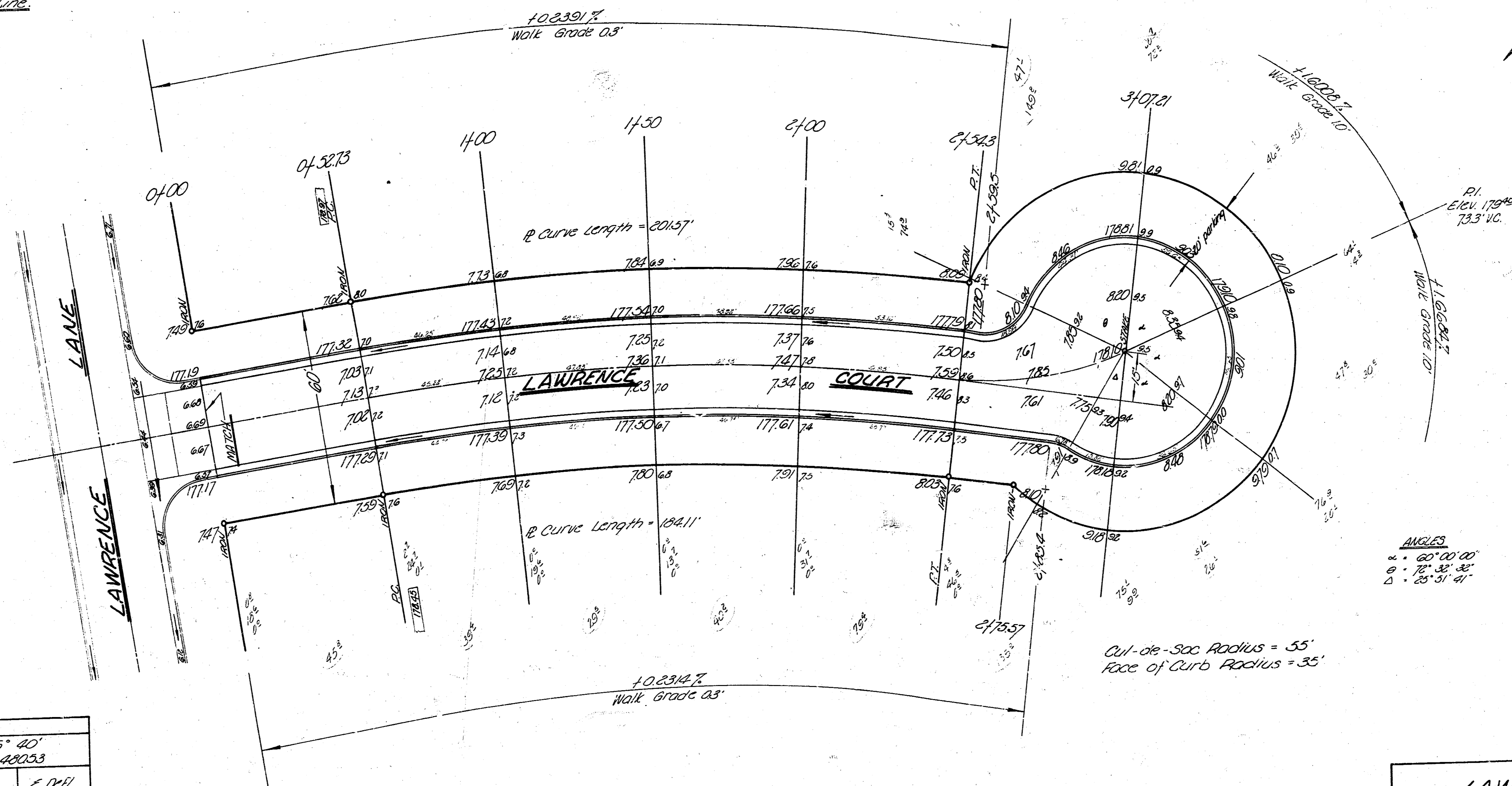


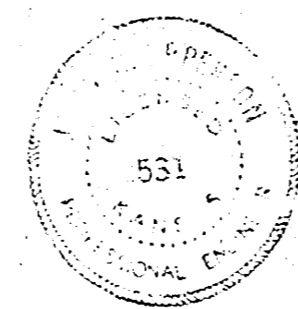
B.M. 19179 N.E. Cor. Conc. Drive by Ho. "1082 Armour"  
 B.M. 17716 "B" in Ritevic Bros. N. of Lawrence Ct. & E. Lawrence Lane.  
 Baseline & Stationing as North Property Line.



Survey, CIVIL No. 143  
 J. L. HARRIS, S.E.  
 JULY 1932

CURVE DATA					
Radius @ N.P. = 692.83 Δ = 16° 40'					
Length of Curve = 201.57 Min. = 2.42053					
Sta.	Arc	Chords		Defl.	E. Off.
		N.P.	S.P.		
0+32.7	47.27	47.26	46.70	1° 57' 15.3"	1° 57' 15"
1+00	30.00	29.97	29.47	2° 04' 21.6"	2° 01' 17"
1+30	30.00	29.97	29.47	2° 04' 21.6"	2° 01' 17"
2+00	30.00	29.97	29.47	2° 04' 21.6"	2° 01' 17"
2+30	30.00	29.97	29.47	2° 04' 21.6"	2° 01' 17"

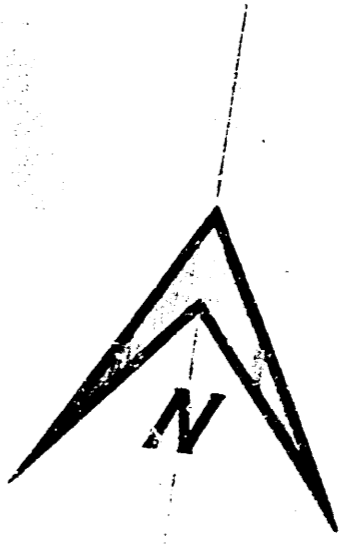
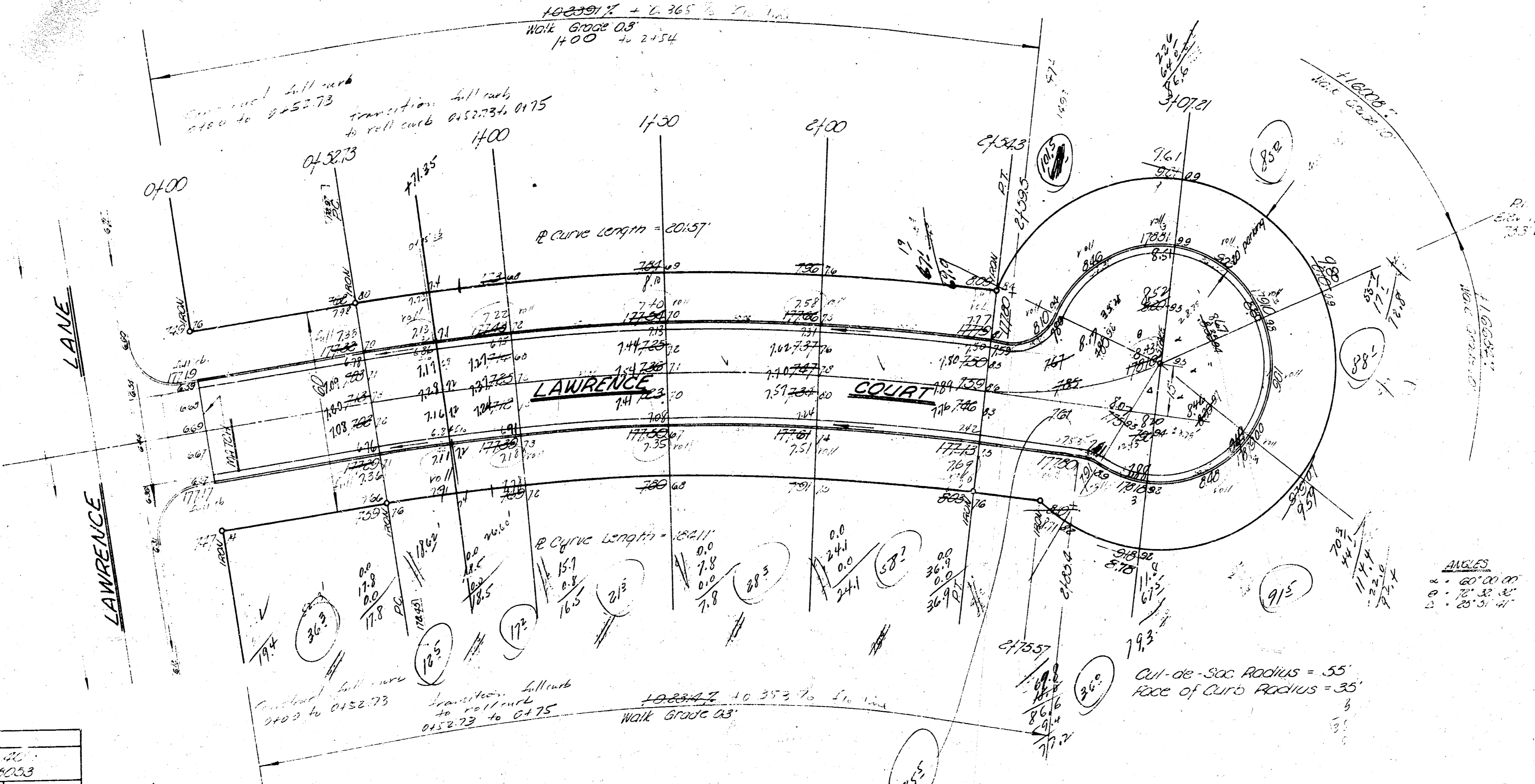
EXCAVATION  
 798.2  
 798.2  
 3/16.2 CUL-DE-SAC



**LAWRENCE COURT**  
 E.L. Lawrence Ln to & incl. Cul-de-Sac  
 36' - 2' - 30' A.C.  
 City of Wichita, Kansas  
 B.E. Smith City Engineer  
 Date: JULY 1932, Proj. No. C19-143

FILE

PLAN OF THE PROPOSED LANE AND CURB ALIGNMENT  
 S.W. CORNER OF SECTION 36, T. 25 N., R. 25 W., S.D.  
 BASED ON ESTABLISHED BY LAND RECORDS, 1900



CURB 11.00

CURVE DATA

Radius = 11.00'    Δ = 10° 00'    Δ/2 = 5° 00'

Length of Curve = 20.17'    Δ/2 = 5° 00' 00"

Sta.	Area	N	E	Dist.	Dist.	Dist.
0+00						
1+00	2' 2"	5' 0"	46.75	2' 2"	1' 57" 15"	1' 57" 15"
1+50	30.00	36.57	70.5	20.17	2' 02" 00"	4' 01" 17"
2+00	30.00	36.57	70.5	20.17	2' 02" 00"	4' 01" 17"
2+50	36.30	37.25	73.73	20.17	2' 02" 00"	4' 01" 17"

EXCAVATION  
 7.50'  
 8.70' @ 10'



LAWRENCE COURT  
 E.L. Lawrence Co. to S.W. Corner of Section 36, T. 25 N., R. 25 W., S.D.  
 26' - 2' - 30' AC.  
 City of Wichita, Kansas  
 B.E. Smith, Engineer  
 303 S. 10th St., Wichita, Kan.

Use standard section and lay them out Use a radius.

ANGLES  
 1. 60° 00' 00"  
 2. 20° 00' 00"

Out-of-Soc. Radius = 55'  
 Race of Curve Radius = 35'

11/17/12  
 11/17/12